

OUR TRADE — AZIMUT



Builder: AZIMUT

Year Built: 2013

Model: Motor Yacht

Price: PRICE ON APPLICATION

Location: United States

LOA: 55' 0" (16.76m)

Beam: 15' 7" (4.75m)

Min Draft: 3' 9" (1.14m)

Max Draft: 3' 9" (1.14m)

Cruise Speed: 30 Kts. (35 MPH)

Max Speed: 35 Kts. (40 MPH)

Our experienced yacht broker, Andrey Shestakov, will help you choose and buy a yacht that best suits your needs **Our Trade — AZIMUT** from our catalogue. Presently, at Shestakov Yacht Sales Inc., we have a wide variety of yachts available on our sale's list. We also work in close contact with all the big yacht manufacturers from all over the world.

If you would like to buy a yacht **Our Trade — AZIMUT** or would like help answering any questions concerning purchasing, selling or chartering a yacht, please call **+1(954)274-4435**

TABLE OF CONTENTS

TABLE OF CONTENTS	2
SPECIFICATIONS	5
Basic Information	5
Dimensions	5
Speed, Capacities and Weight	5
Accommodations	5
Hull and Deck Information	6
Engine Information	6
DETAILED INFORMATION	7
Vessel Walkthrough	7
Highlights	7
Exclusions	8
Disclaimer	8
PHOTOS	9
Aft Profile	9
Port Aft Profile	9
Bow Profile	9
Starboard Bow Profile	9
Transom Profile	9
Starboard Profile	9
Our Trade Collage	10
Cockpit w/Electric Awning	10
Cockpit	10
Cockpit (2)	10
Cockpit Grill	10
Open Plan Layout / Salon, Galley, Dinette	10
Salon Forward	11
Electric Retractable Sunroof w/ Glass Panels	11

Salon to Aft	11
Salon Forward	11
Galley w/ Drop Leaf in Up Position	11
Galley Starboard w/ Electric Sunroof Open	11
Galley Appliances - Miele / Microwave, Convection Oven & Cooktop	12
Galley Sink & Cooktop	12
Helm Electronics / Electric Pilot & Co-Pilot Seats	12
Helm Overview	12
Companionway	12
Master Stateroom / Starboard Midship	12
Master Stateroom to Port	13
Master Stateroom Sitting Area to Port	13
Master Head/Shower	13
Master Head	13
Washer/Dryer / Master Stateroom	13
VIP Stateroom / Bow	13
VIP Stateroom (2)	14
VIP Stateroom (3)	14
VIP Stateroom (4)	14
VIP Head	14
VIP Head	14
Guest Stateroom	14
Guest Stateroom (2)	15
Bow Sunpad & Seating	15
Windlass	15
Raymarine Radar	15
Williams 285 Turbojet Tender w/Garage Door	16
Williams 285 Turbojet Tender	16
Engine Room	16

Engine Room	16
Engine Room	16
Engine Room	16
CONTACTS	17
Contact details	17
Telephones	17
Office hours	17
Address	17

SPECIFICATIONS

Basic Information

Category: Motor Yacht

Model Year: 2013

Year Built: 2013

Country: United States

Vessel Top: Hardtop

Cockpit: Yes

Dimensions

LOA: 55' 0" (16.76m)

Beam: 15' 7" (4.75m)

Min Draft: 3' 9" (1.14m)

Max Draft: 3' 9" (1.14m)

Speed, Capacities and Weight

Cruise Speed: 30 Kts. (35 MPH)

Max Speed: 35 Kts. (40 MPH)

Displacement: 46660 Pounds

Gross Tonnage: 23 Pounds

Water Capacity: 156 Gallons

Fuel Capacity: 423 Gallons

Accommodations

Total Cabins: 3

Total Heads: 3

Captain Cabin: True

Crew Cabin: 1

Crew Heads: 1

Hull and Deck Information

Hull Material: GRP

Deck Material: Fiberglass

Hull Configuration: Modified V-Hull

Hull Color: Miami Silver

Hull Designer: Azimut

Exterior Designer: Stefano Righini

Interior Designer: Carlo Galeazzi

Engine Information

Engines: 3

Manufacturer: Volvo

Model: IPS 435

Engine Type: Inboard

Fuel Type: Diesel

DETAILED INFORMATION

Vessel Walkthrough

Our Trade is a 3 Stateroom & 3 Head Layout including a Crew Cabin. This yacht is powered by Triple Volvo IPS 435hp engines. The Hull profile is done in Miami Silver paint. **Our Trade** has many Upgrades throughout and offers a Custom Décor package. **Our Trade** has a teak transom/bathing platform with garage door that houses her 2013 Williams 285 Tender, complete with a launching-recovery system. The Cockpit is designed for entertaining with ample seating, a large sunbathing cushion and an awning for shade. Entering through the sliding doors, is the open plan Salon/Dinette/Galley with Drop leaf kitchen that can be covered when not in use. To Port is the Dinette with folding table, this C-shaped area seats 4-plus comfortably. Just forward in the Salon is additional seating with a chaise lounge and sofa. **Our Trade** has a 3 Stateroom layout, the Master is located Amidship and has ample walk-around space. It has its own private access to the Master Head/Shower. There is locker space under its double bed and also a vanity table with chairs. The VIP Cabin offers a double bed in the Bow and the Guest Cabin to Starboard has 2 single beds. The VIP Cabin has a direct access to the VIP/Guest Head. **Our Trade** has many Upgrades and has been meticulously maintained by the owner. Follow the link below to view a slideshow of **Our Trade** located in Clearwater, FL:

<http://caryjohn.zenfolio.com/p545330425/slideshow>

Highlights

OUR TRADE 2013 55S Azimut

- **ENGINES:** Triple Volvo IPS 435hp Diesel Engines - Hours 400 Engine, Generator Services Performed / New Bottom Job Completed in May 2015
- **STATEROOMS:** (3) Stateroom - (3) Head Layout + Crew Room Fwd - Master Stateroom – Midship Full Beam - VIP Stateroom – Bow - Guest Stateroom – Starboard - Crew Cabin w/Air Conditioning – Bow Custom Decor Package Door to Crew Cabin – Bow Safe in Master Stateroom Washer/Dryer Combo Unit
- **HULL & DECK FEATURES:** Painted Hull in Miami Silver Two-Sided Boarding Gates Teak Sidedecks Bow Seating & Separate Sunpad Exterior Covers Forward Sunpad Cover Forward & Aft Bench Seat Cover Chain Washing System for Windlass Electric Searchlight Telescopic Gangway Launching/Recovery System Teak Flooring on Cockpit / Transom /Bathing Platform Aft Deck Capstans - Port & Starboard Side
- **COCKPIT:** High Gloss Table in Cockpit w/Hi-Lo System and Table Cover Furniture & Sunbathing Cushion in Cockpit Electric Awning on Aft Cockpit Icemaker & Barbeque Grill in Cockpit
- **SALON:** Open Plan Layout for Salon/Dinette/Galley LED Lighting for Exterior & Interior

w/Dimmers in Salon Power Sun Roof w/Glass Panels Electric Blackout Curtain for Power Sun Roof - Salon Zebrano Floor in Salon & Dinette Electric Reclining Sofa & Chaise Lounge - Salon Hi-Lo Mechanism for TV in Salon

- GALLEY: Open Plan Layout for Salon/Dinette/Galley Miele Appliances / Microwave/Convection Oven & Cooktop Drop Leaf Countertop/ Up or Down Position
- HELM: Docking Maneuvering System / Joystick - Volvo Dynamic Positioning System / Sky Hook Glendinning Cablemaster Sliding Pilot & Co-Pilot Seat Chain Counter w/Controls at Helm
- ELECTRONICS: (2) 15" Raymarine Hybrid Touch Screens Raymarine Auto Pilot Raymarine 4" Wind, Speed, Depth Open Array HD Color Radar Raymarine Black Box VHF Radio Raymarine Radar Antenna 48nm Open KVH HD7 w/4 Receivers Intellan Direct SAT TV 7" Systems Monitor Touch Screen Display Double Racor Filters for Main Engines
- AV EQUIPMENT: - 32" Samsung 3D LED TV w/Articulated Arm for Aft Deck Viewing, Blu-ray Player, Sirius SAT Radio - Salon - 32" Samsung 3D LED TV, Blu-ray Player, Direct TV Receiver - Bow Stateroom - 21" Samsung 3D LED TV, Blu-ray Player - Guest Stateroom / Starboard- - 32" Samsung 3D LED TV, Blu-ray Player, Bose Surround Sound Channeled from Salon - Master Stateroom - Bose Lifestyle Surround Sound / Tied to Master Stateroom
- TENDER: Teak Garage Door for Tender Williams 285 Turbojet Tender

Exclusions

Owner's personal belongings.

Disclaimer

The Company offers the details of this vessel or yacht in good faith but cannot guarantee or warrant the accuracy of this information nor warrant the condition of the vessel. A buyer should instruct his representatives, agents, or his surveyors, to investigate such details as the buyer desires validated. This vessel or yacht is offered subject to prior sale, price change, or withdrawal without notice.

PHOTOS

Port Aft Profile



Aft Profile



Bow Profile



Starboard Bow Profile



Transom Profile



Starboard Profile



Our Trade Collage



Cockpit w/Electric Awning



Cockpit



Cockpit (2)



Cockpit Grill



Open Plan Layout / Salon, Galley, Dinette



Salon Forward



Electric Retractable Sunroof w/ Glass Panels



Salon to Aft



Salon Forward



Galley w/ Drop Leaf in Up Position



Galley Starboard w/ Electric Sunroof Open



Galley Appliances - Miele / Microwave, Convection Oven & Cooktop



Galley Sink & Cooktop



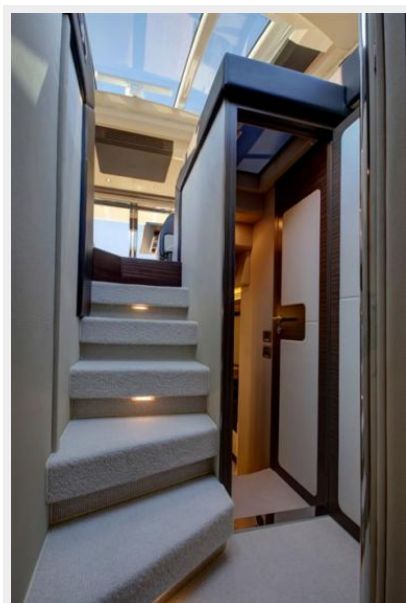
Helm Overview



Helm Electronics / Electric Pilot & Co-Pilot Seats



Companionway



Master Stateroom / Starboard Midship



Master Stateroom to Port

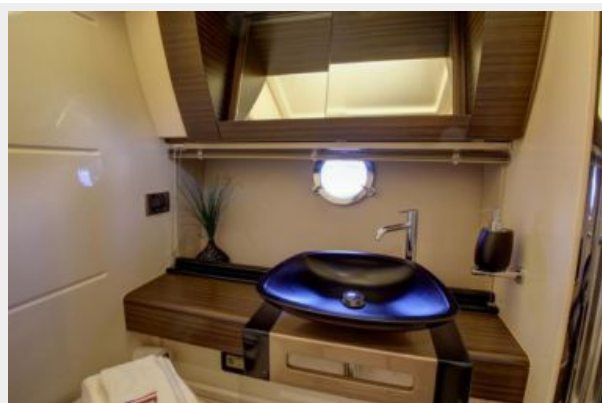


Master Stateroom Sitting Area to Port



Master Head/Shower

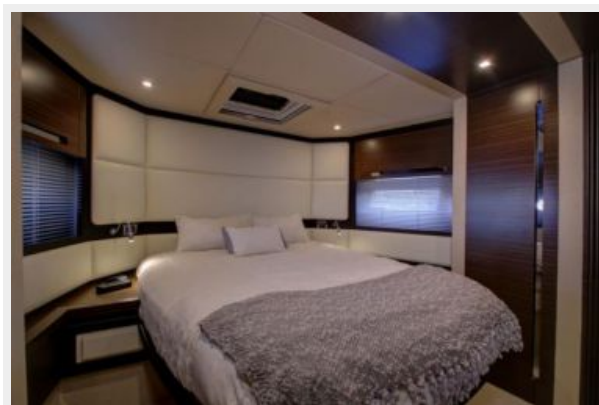
Master Head



Washer/Dryer / Master Stateroom



VIP Stateroom / Bow



VIP Stateroom (2)



VIP Stateroom (3)



VIP Stateroom (4)



VIP Head



VIP Head



Guest Stateroom



Guest Stateroom (2)



Bow Sunpad & Seating



Windlass



Raymarine Radar



Williams 285 Turbojet Tender w/Garage Door



Engine Room



Engine Room



Williams 285 Turbojet Tender



Engine Room



Engine Room



CONTACTS

Andrey Shestakov, leading yacht broker of the sales department of Shestakov Yacht Sales Inc. Shestakov Yacht Sales Inc., the official representative of the Miami/Fort Lauderdale FL headquarters.

Contact details

Email:
andrey@shestakovyachtsales.com

Web: shestakovyachtsales.com/en/

Telephones

USA: **+1(954)274-4435**

Office hours

Monday – Saturday: **9:00 - 21:00 EDT**

Sunday: **closed**

Address



Harbour Towne Marina, 850 NE 3rd St,
STE 213, Dania, FL 33004