

MAKING MEMORIES — TARRAB



Builder: TARRAB

Year Built: 1998

Model: Motor Yacht

Price: PRICE ON APPLICATION

Location: United States

LOA: 100' 0" (30.48m)

Beam: 25' 0" (7.62m)

Max Draft: 6' 3" (1.91m)

Cruise Speed: 11 Kts. (13 MPH)

Max Speed: 13 Kts. (15 MPH)

Our experienced yacht broker, Andrey Shestakov, will help you choose and buy a yacht that best suits your needs **MAKING MEMORIES — TARRAB** from our catalogue. Presently, at Shestakov Yacht Sales Inc., we have a wide variety of yachts available on our sale's list. We also work in close contact with all the big yacht manufacturers from all over the world.

If you would like to buy a yacht **MAKING MEMORIES — TARRAB** or would like help answering any questions concerning purchasing, selling or chartering a yacht, please call **+1(954)274-4435**

TABLE OF CONTENTS

TABLE OF CONTENTS	2
SPECIFICATIONS	5
Overview	5
Basic Information	5
Dimensions	5
Speed, Capacities and Weight	5
Accommodations	5
Hull and Deck Information	6
Engine Information	6
DETAILED INFORMATION	7
Main Deck	7
Pilothouse	7
Lower Level	7
Aft Crew Area	8
Bow	8
Aft Deck	9
Fly Bridge	9
Electronics and Navigation Equipment	9
Electrical System	9
Deck and Hull	10
Mechanical Equipment and Engine Details	10
Exclusions	11
Disclaimer	11
PHOTOS	12
Forward	12
Bow	12
Starboard	12
Flybridge	12

Flybridge	13
Jacuzzi Forward	13
Jacuzzi	13
Jacuzzi	13
Sunpad Forward	14
Sunpad	14
Transom	14
Helm	14
Controls	15
Controls	15
Aft	15
Aft Deck	15
Aft Seating	16
Companionway	16
Dinette	16
Dining	16
Dining	17
Salon	17
Salon	17
Salon	17
Galley	18
Galley	18
Galley	18
Master	18
Master	19
Master Bath	19
Master Bath	19
VIP	19
VIP Bath	20

Guest	20
Stairway	20
Pilothouse	20
Tender	21
Prop	21
GA Plans	21
GA Plans	21
100' Tarrab Motor Yacht MAKING MEMORIES Profile	22
CONTACTS	23
Contact details	23
Telephones	23
Office hours	23
Address	23

SPECIFICATIONS

Overview

ESTATE SALE

Basic Information

Category: Motor Yacht

Sub Category: Raised Pilothouse

Model Year: 1998

Year Built: 1998

Country: United States

Dimensions

LOA: 100' 0" (30.48m)

Beam: 25' 0" (7.62m)

Max Draft: 6' 3" (1.91m)

Speed, Capacities and Weight

Cruise Speed: 11 Kts. (13 MPH)

Max Speed: 13 Kts. (15 MPH)

Water Capacity: 215 Gallons

Holding Tank: 150 Gallons

Fuel Capacity: 3950 Gallons

Accommodations

Total Cabins: 4

Sleeps: 8

Total Heads: 7

Captain Cabin: True

Crew Cabin: 2

Crew Berths: 4

Hull and Deck Information

Hull Material: Fiberglass

Hull Configuration: Semi Vee

Engine Information

Engines: 2

Manufacturer: Detroit Diesel

Model: Allison 16V-92

Fuel Type: Diesel

DETAILED INFORMATION

Main Deck

100' Tarrab Motor Yacht MAKING MEMORIES **STARBOARD FOYER** - Wood paneling - Stairway to the pilothouse - Suede headliner - Marble floor - Individual A/C control - Stairway to lower deck - Entrance to on-deck powder room - Access to side deck **PORT FOYER** - Wood paneling - Stairway to the pilothouse - Suede headliner - Access to galley - Access to storage beneath the pilothouse - Individual A/C control - Access to side deck **GALLEY** - "U" shaped dinette - Four burner electric range with oven and hood - Sharp microwave oven - Whirlpool dishwasher - Sub-Zero refrigerator - Sub-Zero freezer - Whirlpool trash compactor - Lacquer upper and lower storage cabinets - Natural granite counter tops - Stainless steel sink - Recessed lighting - Black & Decker coffee maker - High pressure laminated walls - Vinyl headliner - Hunter Douglas Duette pleated shades - 120 volt GFI duplex outlets - Telephone - Tinted safety glass windows **POWDER ROOM** - Burl veneer vanity with natural marble counter - Decorator fixtures - Marble floor - Recessed lighting - Custom mirror - Safety mirror headliner - Microphor toilet **DINING AREA** - Custom dining table with ten upholstered chairs - Recessed lighting - Credenza for china, crystal, and silverware with built-in storage compartments - China cabinets with glass doors above the credenza for display - Custom wall minor - Custom cabinetry with in-laid marquetry **SALON** - Custom sofas - Cocktail tables - Decorator window treatment - Built-in entertainment center with Bose theater remote control color TV with VCR and DVD player stereo system and speakers - Bar with granite counter top, refrigerator, icemaker, storage for glasses and bottles, plus two recliners - Recessed lighting - Suede headlining - Wood paneling - Carpeting - Sliding door with stainless steel frame and tinted safety glass to aft deck - 120 volt duplex outlets - Telephone - Tinted safety glass windows - Two Individual A/C control panels

Pilothouse

- Custom console with walnut burl veneer and leather - Upholstered Turnbull helm chair - Upholstered leather bench seat - Drawer space with additional storage locker - Teak and holly sole - Red safety night vision lights - Recessed lighting - Chart table, DDEC engine LCD displays, throttle and gear controls and all necessary switches - Furuno FR-7111 Radar - 72 mile - Robertson AP300 Autopilot - Raymarine E80 - Furuno FCV581 Speed/Depth Log - Icom IC-M412 VHF radio Raymarine digital depth gauge - Standard Horizon LH10 Hailer - Panasonic intercom/phone system - Closed circuit TV with auto-change monitor - Naiad stabilizer control - Lighted compass - Windshield wipers and windshield washers - Pioneer CD AM/FM/Satellite Stereo - Electrical panel with 240V (AC) single lever, double circuit breakers, 120V (AC) and 12 V (DC) circuit breakers - Individual A/C control panel - Suede headliner - Stairway to flybridge - Stairway to port and starboard foyers

Lower Level

VIP STATEROOM - Queen size bed with polyfoam mattress - Closet and drawer storage - Nightstands - Recessed lighting - Custom mirror - Remote control color television - Walnut burl veneer accents - Carpeting - Suede headliner - 120 volt duplex outlet - Custom designed headboard with in-laid wood - Decorator quilted bedspreads and pillow shams - Individual A/C control panel - Television - AM/FM CD stereo system - Telephone - Ensuite lavatory **PORT AND STARBOARD GUEST STATEROOMS** - Twin beds in each stateroom with polyfoam mattresses - Nightstands with drawers - Hanging closet and drawer storage - Decorator bed spreads and pillow shams - Recessed lighting - Custom mirrors - Color televisions - AM/FM/cassette stereo system - Carpeting - Wood paneling - Suede headliner - 120 volt duplex outlets - Custom designed headboards with in-laid wood - Telephones - Individual A/C control panel - Ensuite lavatories **GUEST LAVATORIES** - Lacquer vanities with marble counter tops - Decorator fixtures - Tubs with safety glass doors - Microphor toilets - Custom mirrors - Marble floors - Safety mirror headliners - Ceramic tile walls - Recessed lighting - Exhaust fans **MASTER STATEROOM** - King size bed with Memory foam mattress - Nightstands with drawers - Dressers to port and starboard - Custom mirror - Recessed and accent lighting - Remote control color TV with remote control lift system - AMIFMICD stereo system with speakers - Wood paneling - Walk-in closet with cedar wall coverings - Sofa - Carpeting - Suede headliner - 120 volt duplex outlets - Custom designed headboard with in-laid wood - Decorator bedspreads and pillow shams - Custom window treatments - Built-in make-up vanity - Telephone - Lighted wall sconces - Individual A/C control panel **MASTER BATH** - Lacquer vanity with natural marble counter tops - Oval hot tub - Separate shower - Marble floor - Custom fixtures - Microphor toilet - Ceramic tile walls - Custom mirrors - Safety mirror headliner - Built-in hair dryer - Exhaust fan **LAUNDRY** - Whirlpool washer - Eurotech dryer - Storage shelves - Cabinets - Rubber floor - Laminated walls and headliner

Aft Crew Area

CREW LOUNGE - Wood paneling - Dinette with storage beneath - Dinette hi-lo table which converts to a bed - Cabinet with stainless steel sink and marble counter - Electric cook top stove - Microwave/convection oven - GE refrigerator - Remote control 13" color TV - AM/FM/CD stereo system with speakers - Separate access stairway from aft deck - Electric panel - Rubber floor - Telephone - Watertight door to engine room - High pressure laminated headliner **CAPTAIN'S CABIN** - Wood paneling - Queen size berth with polyfoam mattress - Bedspread and pillow sham - Nightstand - Hanging locker and drawer storage - Telephone - Rubber floor - Ensuite bath with vanity, stall shower, Microphor toilet, exhaust fan, rubber floor, laminated wall coverings and headliner **CREW CABIN** - Wood paneling - Upper and lower berths with polyfoam mattresses - Bedspreads and pillow shams - Nightstand - Hanging locker and drawer storage - High pressure laminated headliner **CREW HEAD** - High pressure laminated wall covering - High pressure laminated headliner - Vanities with counter top - Separate stall shower - Microphor toilet - Exhaust fan - Mirror - Rubber floor

Bow

- Oval hot tub, 3 large sunpad arrangement over hot tub - Hot and cold faucets with shower -

Canvas covering for pilothouse windshield - 12V light fixtures on sides of hot tub and under forward seat - Non-skid deck - Stainless steel rails and stanchions - Fortress aluminum Danforth type anchor with galvanized chain - Hydraulic Maxwell Vertical 4500 pound capacity windlass with two forward switches and two remote stations at pilothouse and flybridge - Storage compartment with hatch, stairway, shelves and door to chain locker - Two storage compartments at both sides of hot tub

Aft Deck

- Large entertaining area - Stairway to crew quarters - Teak deck - Tinted safety glass - Stainless steel rails and stanchions with rail gates - Closed circuit TV camera - Two 240/120 volt (AC), 100 amp 75' shore power cables housed in dual Glendinning CM-7 units - Telephone/TV inlet - Stainless steel freshwater wash down quick connector - Dual stairways to swim platform - Overhead lights on aft deck hardtop - Port and starboard accent lighting - Sliding door with stainless steel frame and tinted safety glass - Built-in sink with cover at port side - Closet on starboard side - Weatherproof speakers

Fly Bridge

- Control console with excellent arrangement for instruments - Helmsman/guest bench - "U" shaped wet bar with Raritan icemaker and 3 deck mounted barstools - Large rectangle table with 6 cushioned dining chairs - Stainless steel wheel - Radar arch with stainless steel support for navigation and anchor lights - Tinted windshield - Stairs and hatch from pilothouse - Weatherproof speakers - Canvas covering for controls - Canvas covering for wet bar - Non-skid decks - Garmin 5212 GPS with AIS - Standard Horizon VHF Radio - Raymarine digital depth gauge - Robertson AP300 Autopilot- remote station - Naiad stabilizers - second station - Bow thruster control - Lighted compass - One ITT Jabsco searchlight with two remote controls - MarQuipt hydraulic 2000 pound stainless steel davit - Double Kahlenberg air horns - Two television antennas - Stainless steel rails and stanchions - Telephone - 12 volt light fixtures

Electronics and Navigation Equipment

- Garmin 5212 GPS with AIS - Furuno FR-7100D Radar- 72 mile range- connected to GPS with fluxgate - Robertson AP300 Autopilot - Standard Horizon VHF Radio - Furuno FCV582 Speed/Depth Log - Panasonic Intercom/Phone System connected to shore inlet and cellular system - Motorola Marine Cellular Phone System - Closed circuit TV with auto change monitor with cameras on aft deck and in engine room - Lighted compass - Navigation lights

Electrical System

-Two 240/120V, 45 KW, 60Hz, Onan generators - Port: 1,615 hours and Starboard: 5060 hours

with freshwater cooling, sound shield, strainers at sea water intake, Racor fuel filters, water lift muffler, remote start and stop panels at the two electric panels, fully protected for high water temperature, low oil pressure and over-load - Main electrical panel at crew quarters with 12V (DC) circuit breakers, 240V (AC) single lever double circuit breakers and 120V (AC) circuit breakers. Main breakers with sliding lock to switch port generator, starboard generator or shoreline inlet, one for A/C and one for ship's services. Battery connection and parallel switches. - Electrical panel at Pilothouse with 12V (DC) circuit breakers, 240V (AC) single double circuit breakers and 120V (AC) circuit breakers for each load, (AC) and (DC) amp meters, volt meters, and remote panel for generators - Cranking batteries for main engines and generators - Service batteries - Fully automatic 12V and 24V battery chargers - Two 240/120V, 100 amp electrical shore power inlets - Light fixtures in each room with switches and electrical GFI outlets in wet areas and engine room and double electrical outlets in all rooms - Recessed lighting throughout - GFI outlets - 12V (DC) navigation and anchor lights

Deck and Hull

- Danforth type galvanized anchor with chain lead and anchor line - Stainless steel anchor chute and roller - Stainless steel rails and stanchions forward with rail gates for port and starboard boarding - Non-skid exterior decks forward and teak deck aft - Maxwell hydraulic 4500 pound windlass - Stainless steel rails and stanchions with rail gates on aft deck area leading to the semi-circular stairway for the swim platform - Molded, full beam, swim platform - Two Stairways leading to swim platform from aft deck - Teak aft deck - Overhead lights on aft deck hardtop - Fiberglass cap rail - Interlux anti-blistering system and anti-fouling paint - Polyurethane foam insulation on all sides, top of hull, deck and superstructure - Isophthalic resin, interior layer - Isophthalic gelcoat, exterior layer - Hull, topsides and superstructure, polyurethane coating - Feature stripes and boot stripe, polyurethane coating - Decks, non-skid surface, polyurethane paint with polymeric beads - Boarding gates port and starboard side decks - Bow and stern staffs - Sea stairs with storage brackets - Springline cleats - Bow and stern chocks and cleats

Mechanical Equipment and Engine Details

- Both main engines have had substantial upgrades: - Port has 251 hours SMOH in June 2014 (mechanical gauge shows 5,976 hours) - Starboard has 600 hours since 8 cylinder rebuild in November 2012 (mechanical gauge shows 56.82 hours) - Chilled water MarineAir conditioning system with heat and air handlers, individual fan speed controls and thermostats at each room - 192,000 BTU's - Twin diesel fresh-water cooled Detroit Diesel 16V92T A's, 1450 HP each, with marine gears; alternators; fuel and oil filters and double Racor fuel filters for each main engine; strainers at sea water intake; electric panels, clutch and throttle controls at pilothouse and flybridge; Air-Sep air filters; Ace adjustable mounts; an exclusive underwater exhaust, which insures minimum noise and results in a cool engine room enhancing engine performance - Power assisted hydraulic Hynautic steering system with stainless steel rudders - Zincs on shafts and transom, bonded to rudders and all metallic parts under water with brush at both shafts - Fuel isolation valves - Fiberglass fuel tanks - Microphor toilets - Fuel transfer and prefiltering with

heavy duty 115V (AC) pump and Racor 1000 fuel filter - Naiad hydraulic stabilizers - Maxwell 4500 vertical hydraulic windlass - Key Power 16" hydraulic bow thruster system - Aquamet propeller shafts, stainless steel struts with rudder strut bearings and four blade bronze propellers - Air compressor with quick connectors at engine room and flybridge - Matrix water maker - 1500 gallons/day - 220V (AC) 40 gallon water heater - Holding tank plumbed for dockside discharge and heavy duty pump - 12V (DC) 3700 GPH bilge pump with automatic starting floating switch with permanent supply with breaker from service batteries and manual switch - Automatic Fireboy fire extinguishing system with automatic shut-down system for main engines, generators and blowers and dual station over-ride system at pilothouse and flybridge and manual release at crew quarters - Two fresh air blowers with intakes at flybridge - Water fill hose for main engines and generators - Water supply with pressure regulator and valve to the chiller water system - Watertight and soundproof door to crew quarters - Sides, bulkheads and headliner covered with marine noise insulation and aluminum plating - Closed circuit TV camera - Exhaust blowers - Rubber floor - Freshwater pressure system with 120V (AC) pump and pressure tank

Exclusions

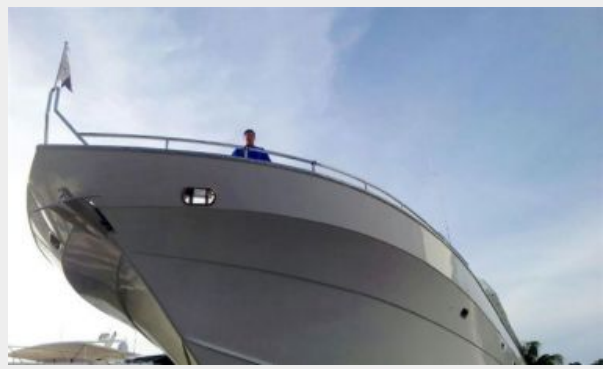
Owner's personal belongings.

Disclaimer

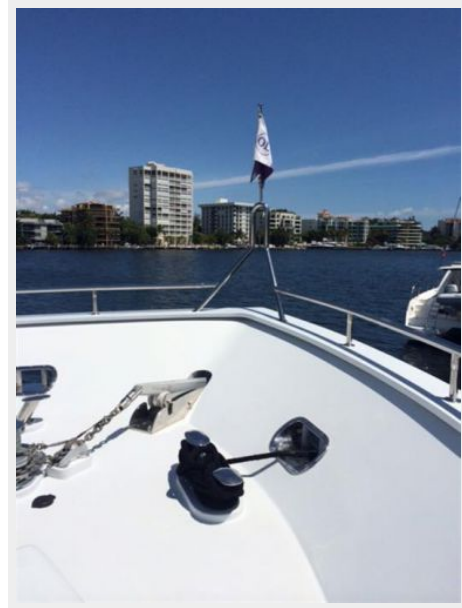
The Company offers the details of this vessel or yacht in good faith but cannot guarantee or warrant the accuracy of this information nor warrant the condition of the vessel. A buyer should instruct his representatives, agents, or his surveyors, to investigate such details as the buyer desires validated. This vessel or yacht is offered subject to prior sale, price change, or withdrawal without notice.

PHOTOS

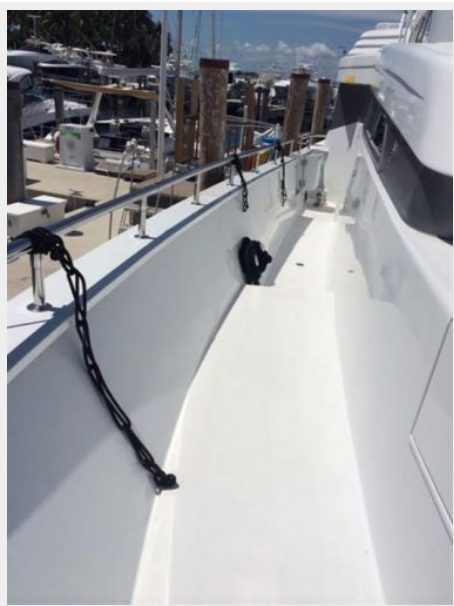
Bow



Forward



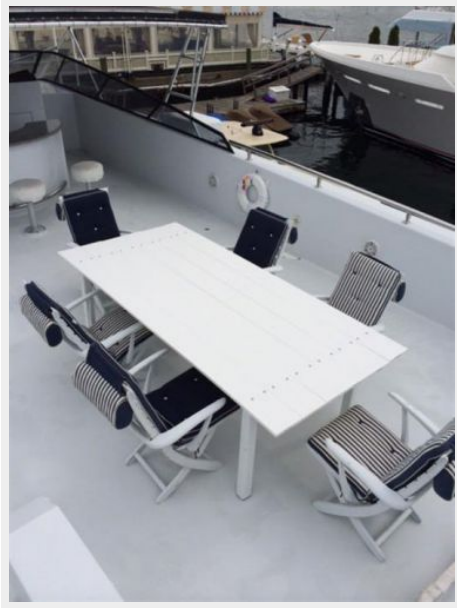
Starboard



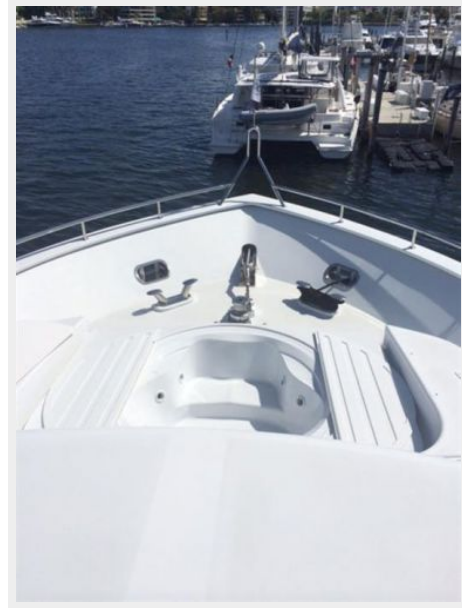
Flybridge



Flybridge



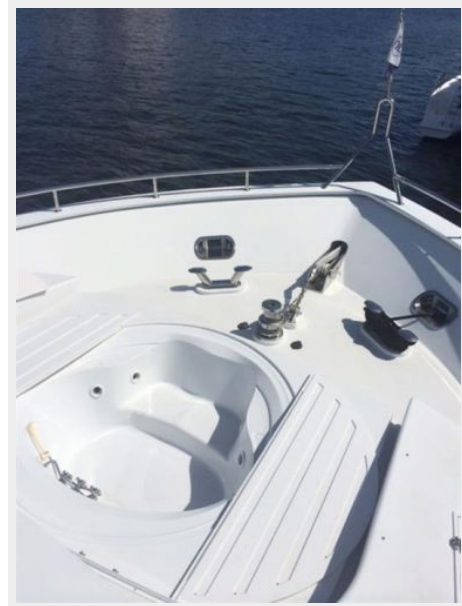
Jacuzzi Forward



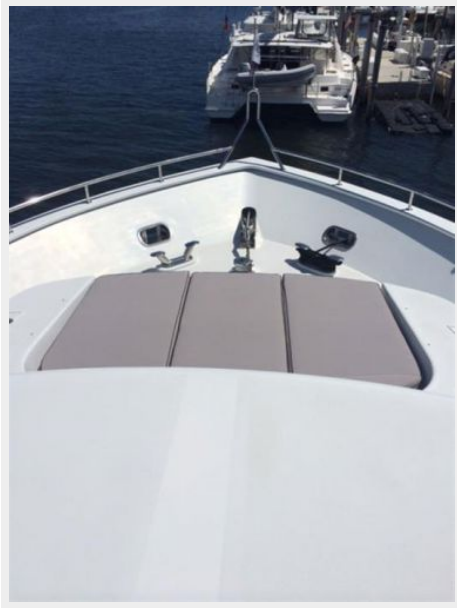
Jacuzzi



Jacuzzi



Sunpad Forward



Sunpad



Transom



Helm



Controls



Controls



Aft



Aft Deck



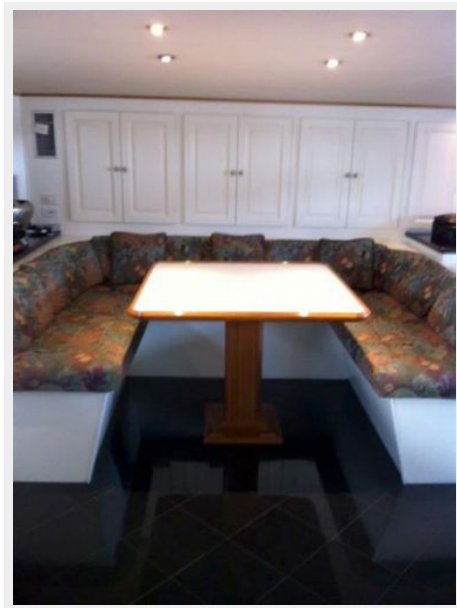
Aft Seating



Companionway



Dinette



Dining



Dining



Salon



Salon



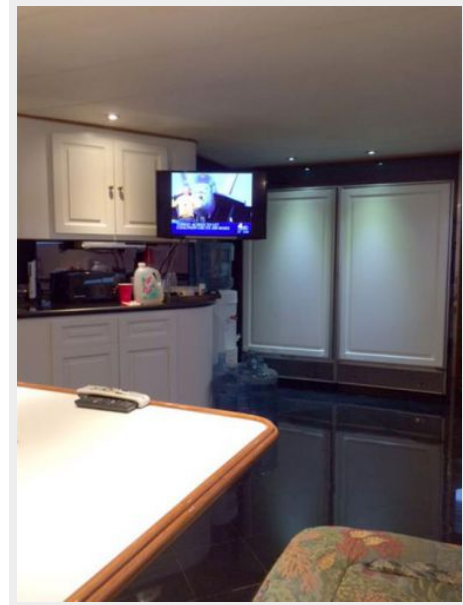
Salon



Galley



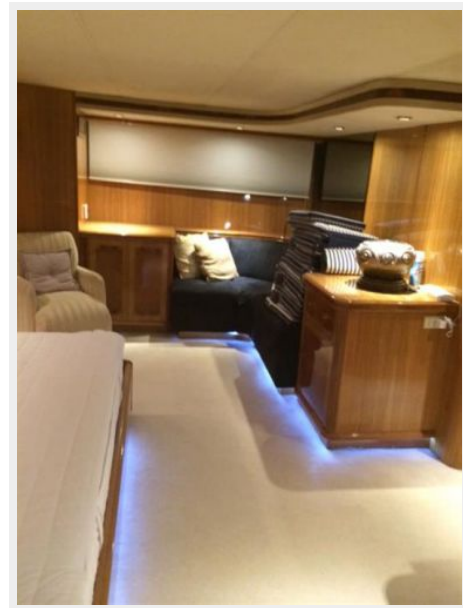
Galley



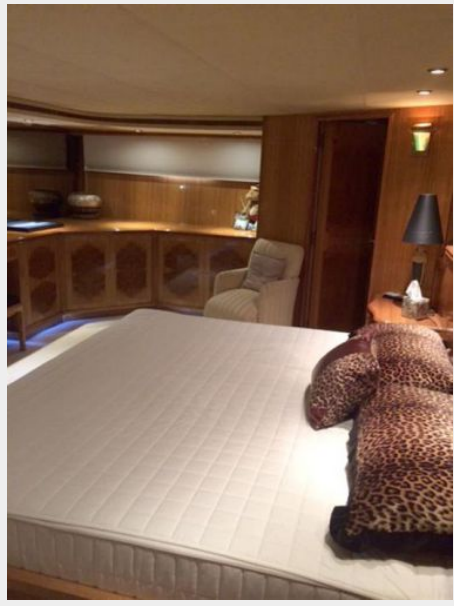
Galley



Master



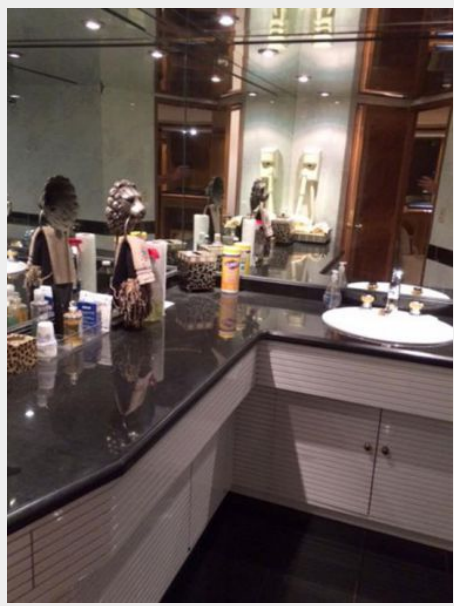
Master



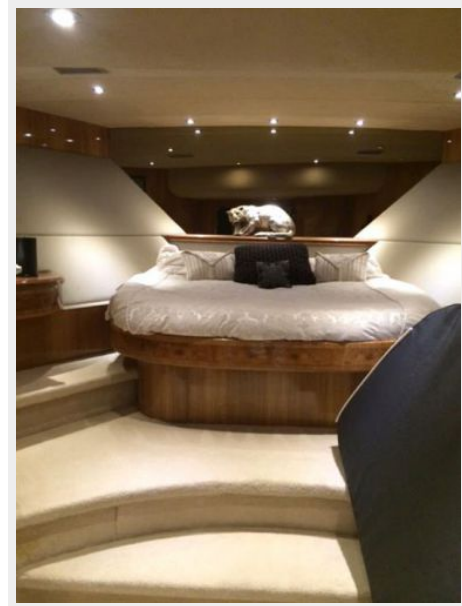
Master Bath



Master Bath



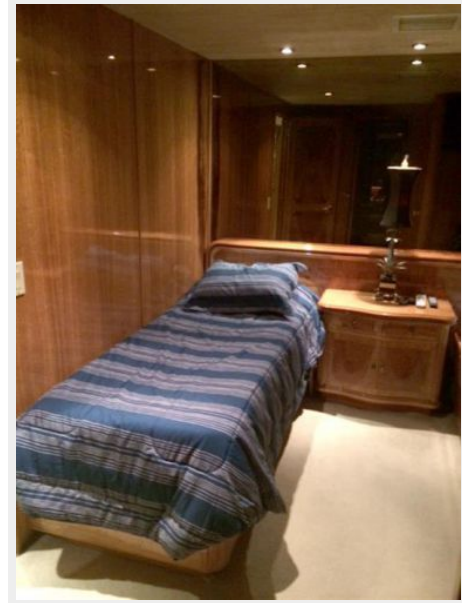
VIP



VIP Bath



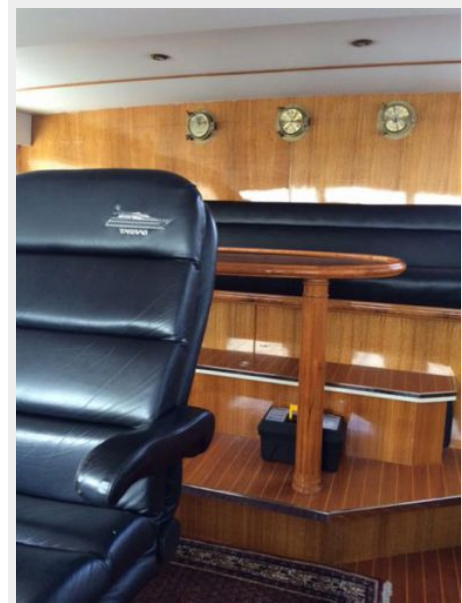
Guest



Stairway



Pilothouse



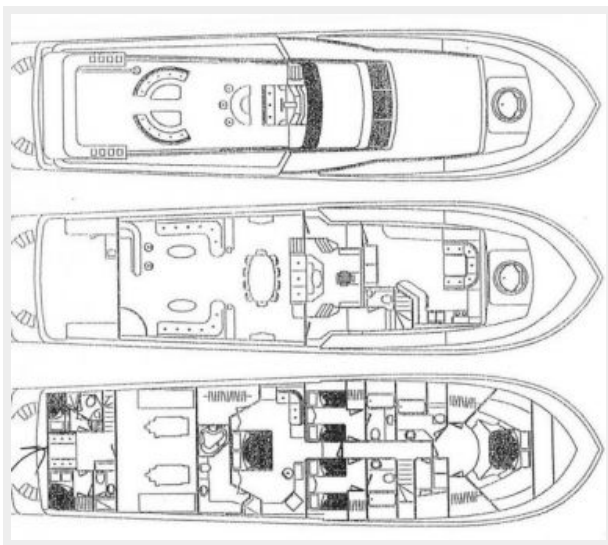
Tender



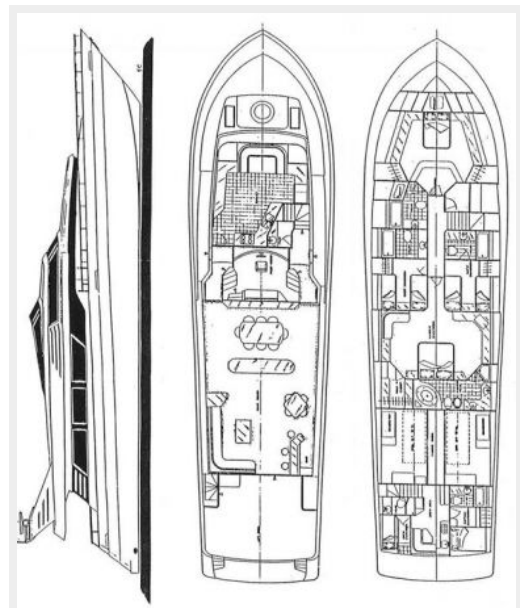
Prop



GA Plans



GA Plans



100' Tarrab Motor Yacht MAKING MEMORIES Profile



CONTACTS

Andrey Shestakov, leading yacht broker of the sales department of Shestakov Yacht Sales Inc. Shestakov Yacht Sales Inc., the official representative of the Miami/Fort Lauderdale FL headquarters.

Contact details

Email: andrey@shestakovyachtsales.com

Web: shestakovyachtsales.com/en/

Telephones

USA: +1(954)274-4435

Office hours

Monday – Saturday: **9:00 - 21:00** EDT

Sunday: **closed**

Address



Harbour Towne Marina, 850 NE 3rd St,
STE 213, Dania, FL 33004