

DAY OFF — FERRETTI



Builder: [FERRETTI](#)

Year Built: 2006

Model: Motor Yacht

Price: PRICE ON APPLICATION

Location: Greece

LOA: 88' 9" (27.03m)

Beam: 22' 1" (6.72m)

Max Draft: 7' 2" (2.18m)

Cruise Speed: 26 Kts. (30 MPH)

Max Speed: 30 Kts. (35 MPH)

Our experienced yacht broker, Andrey Shestakov, will help you choose and buy a yacht that best suits your needs **DAY OFF — FERRETTI** from our catalogue. Presently, at Shestakov Yacht Sales Inc., we have a wide variety of yachts available on our sale's list. We also work in close contact with all the big yacht manufacturers from all over the world.

If you would like to buy a yacht **DAY OFF — FERRETTI** or would like help answering any questions concerning purchasing, selling or chartering a yacht, please call **+1(954)274-4435**

TABLE OF CONTENTS

TABLE OF CONTENTS	2
SPECIFICATIONS	3
Overview	3
Basic Information	4
Dimensions	4
Speed, Capacities and Weight	4
Accommodations	4
Hull and Deck Information	4
Engine Information	5
PHOTOS	6
CONTACTS	11
Contact details	11
Telephones	11
Office hours	11
Address	11

SPECIFICATIONS

Overview

This splendid Ferretti 881 provides beautiful and comfortable accommodation for up to 10 guests in 4 lovely cabins, each with its own bathroom with marble floors. The boat has a comfortable living area inside, a world class-flying bridge for entertaining including jacuzzi, plus a huge water sports activity area on the stern. All of these features make the boat versatile, this serving the needs of a wide range of owners.

Accommodation Master Cabin: Walk In Wardrobe. Marble floor in bathroom. His and Hers toilet/bidet/sink and large shower and jacuzzi. Large hull windows on both sides. Large LCD TV and DVD / Satellite. Panasonic Phone. VIP Cabin: Double Bed. Marble floor in bathroom. Ensuite bathroom with shower. Walk in Wardrobe. 15" LCD TV & DVD / Satellite. Panasonic Phone. Twin Cabins Port and Starboard: Pullman bunks. Marble floor in bathroom. Ensuite bathroom with shower. 15" LCD TV and DVD / Satellite. Panasonic Phone. Captains Cabin: One large bed and Pullman bunk. Ensuite bathroom and shower. Panasonic Phone. Raymarine multidisplay for wind / depth / speed instruments. Crew Twin Cabin: 2 Bunk Beds, with additional Pullman. Ensuite bathroom with shower. Crew Mess Area modified with extra refrigerator and TV/DVD Equipment. HI-LO dinette table in the crew area Communications and navigational equipment

Navigator GEONAV 11" colour in fly Navigator GEONAV multi LCD 15' screen in bridge Radar 48 N.M. 15" screen SSB Radio telephone Furuno NAVIOP system 3rd Control station in cockpit Antenna SAT TV navisystem 95NT Second antenna DOM (symmetric) TV/Video modulator distribution TV, SAT, DVD, TVCC TV closed circuit system with 4 cameras NAVIOP system with monitoring for portholes and door Telephone centre Panasonic Mechanical, propulsion and engine room equipment

2x MTU 16V 2000 M91, logging 1300 hours Mitsubishi Anti-Roll-Gyro stabilizers Water maker 120 Liters per hour Fullair conditioning 120.000 BTU reverse cycle Inverter 24V – 240V – 3000 Watt, plus second inverter 5.000W for service Hydraulic bow thruster 58Hp Hydraulic stern thruster 50 HP (double prop) 2 Kohler Generators 27Kw Spare shaft Anchor chain 140 meters Additional pre filters for the engines Galley, domestic and laundry equipment

Electric raising for curtains in salon and master cabin Smoke alarm in each cabin Oven: bigger new Bosch in galley Washing machine 5KG and separate drying machine Mosquito screens for the portholes Extractor fan in day head Entertainment equipment

TV 43" with electric raising device HI-FI surround playtime master TV 32" in master with stereo Bose HI-FI TV 20" in VIP cabin TV 20" in both guest cabins TV 17" in main bridge TV 15" in captains cabin Radio CD stereo in each cabin DVD for master cabin and salon Deck equipment

Jacuzzi in the fly Jacuzzi in master shower Hydraulic bimini top Cockpit cover in light material Watertight lights underneath the spoiler Extension for the gangway Ice maker in the cockpit Teak

deck Capstans 2x 2 side doors (one on each side walk)

Basic Information

Category: Motor Yacht

Sub Category: Flybridge

Model Year: 2006

Year Built: 2006

Country: Greece

Fly Bridge: Yes

Dimensions

LOA: 88' 9" (27.03m)

Beam: 22' 1" (6.72m)

Max Draft: 7' 2" (2.18m)

Speed, Capacities and Weight

Cruise Speed: 26 Kts. (30 MPH)

Max Speed: 30 Kts. (35 MPH)

Max Speed Range: 355 Kts.

Gross Tonnage: 108 Pounds

Accommodations

Total Cabins: 4

Sleeps: 10

Hull and Deck Information

Hull Material: FRP

Hull Color: White

Exterior Designer: Zucon International

Interior Designer: Zucon International

Engine Information

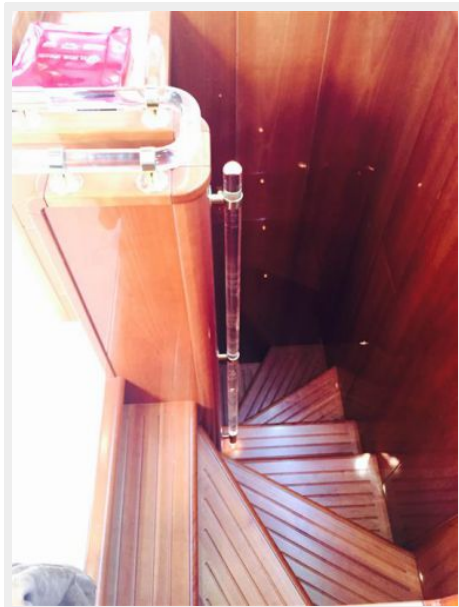
Engines: 2

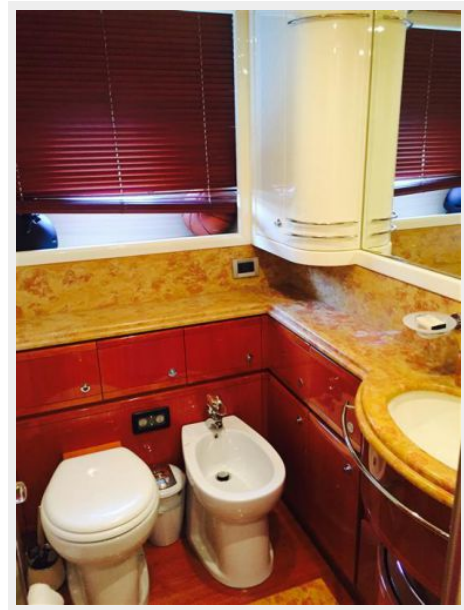
Manufacturer: MTU

Model: MTU 16V 2000 M91

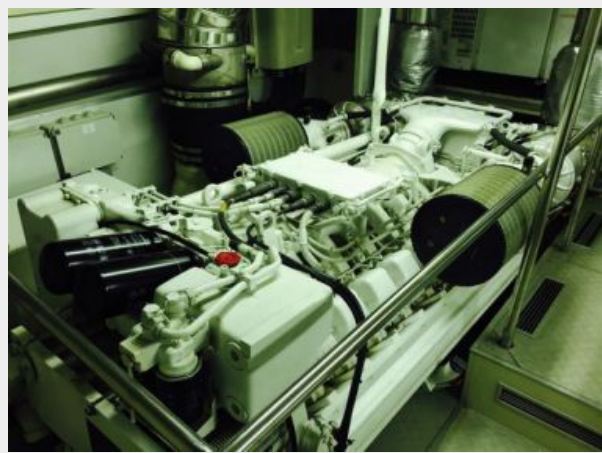
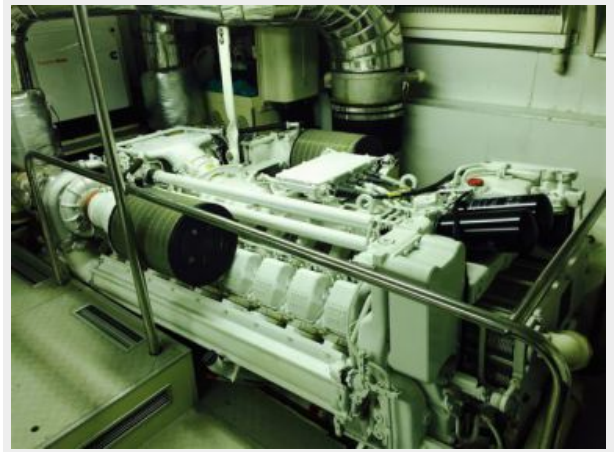
Fuel Type: Diesel

PHOTOS











CONTACTS

Andrey Shestakov, leading yacht broker of the sales department of Shestakov Yacht Sales Inc. Shestakov Yacht Sales Inc., the official representative of the Miami/Fort Lauderdale FL headquarters.

Contact details

Email: andrey@shestakovyachtsales.com

Web: shestakovyachtsales.com/en/

Telephones

USA: +1(954)274-4435

Office hours

Monday – Saturday: **9:00 - 21:00** EDT

Sunday: **closed**

Address



Harbour Towne Marina, 850 NE 3rd St,
STE 213, Dania, FL 33004