

AMANZI — OYSTER MARINE LTD



Builder: OYSTER MARINE LTD

LOA: 57' 4" (17.48m)

Year Built: 2007

Beam: 16' 3" (4.95m)

Model: Cruising Sailboat

Price: PRICE ON APPLICATION

Location: Antigua and Barbuda

Our experienced yacht broker, Andrey Shestakov, will help you choose and buy a yacht that best suits your needs **AMANZI — OYSTER MARINE LTD** from our catalogue. Presently, at Shestakov Yacht Sales Inc., we have a wide variety of yachts available on our sale's list. We also work in close contact with all the big yacht manufacturers from all over the world.

If you would like to buy a yacht **AMANZI — OYSTER MARINE LTD** or would like help answering any questions concerning purchasing, selling or chartering a yacht, please call **+1(954)274-4435**

TABLE OF CONTENTS

TABLE OF CONTENTS	2
SPECIFICATIONS	4
Overview	4
Basic Information	4
Dimensions	4
Speed, Capacities and Weight	4
Accommodations	4
Hull and Deck Information	5
Engine Information	5
DETAILED INFORMATION	6
Construction	6
Machinery	7
Electrical Systems	7
Plumbing Systems	8
Tankage	9
Navigation and Communications Equipment	9
Domestic Equipment	12
Accommodation	13
Deck Equipment	16
Broker's Remarks	20
Exclusions	20
Disclaimer	20
PHOTOS	22
CONTACTS	28
Contact details	28
Telephones	28
Office hours	28
Address	28

SPECIFICATIONS

Overview

G5 Oyster 56 with all the new widgets and flutes. Comes with sailing rig in cutter and Maple innards. Lots of go faster gear.

Basic Information

Category: Cruising Sailboat

Sub Category: Center Cockpit

Model Year: 2007

Year Built: 2007

Country: Antigua and Barbuda

Dimensions

LOA: 57' 4" (17.48m)

LWL: 49' 1" (14.96m)

Beam: 16' 3" (4.95m)

Speed, Capacities and Weight

Displacement: 58422.49943 Pounds

Water Capacity: 250.9634494 Gallons

Fuel Capacity: 250.9634494 Gallons

Accommodations

Total Cabins: 4

Total Berths: 7

Total Heads: 2

Hull and Deck Information

Hull Material: GRP

Deck Material: GRP

Hull Finish: Fiberglass

Hull Designer: Rob Humphreys / Oyster

Engine Information

Engines: 1

Manufacturer: Yanmar

Model: 4LHA-HTP

Engine Type: Inboard

Fuel Type: Diesel

DETAILED INFORMATION

Construction

Overall Measured Length: 58'11" including 1'7" davits and 1'5" pulpit

RCD Status: The yacht conforms with the essential safety requirements of Directive 94/25EC (Recreational Craft Directive) and is categorised A – "Ocean" (or Cat B – whichever is appropriate)

Built and maintained to MCA Category 2

Hull & Superstructure Construction:

- GRP hull is laid up single skin with structural stringers and floors to Lloyds approved design specification.
- Hull colour white with cove line and double boot top lines in standard Oyster Blue.
- The stern design incorporates a bathing platform trimmed with teak slats and stainless steel steps for access to the stern deck.

Deck Construction:

- Deck structure moulded in GRP with balsa core.
- Teak laid decks.
- Oyster deck saloon with new "G5" deck styling.
- Bulwark finished with a teak capping rail with stainless steel fairleads. Additional pair of stern fairleads in caprail.

Keel & Rudder:

- High performance bulb keel.
- Fully protected skeg-hung rudder.

Machinery

Engine & Gearboxes:

- 1 x Yanmar 4LHA-HTP 4 cylinder diesel, 160HP.

Maintenance & Performance:

- Engine Hours: 3567 hrs approx @ July 2014

Propulsion & Steering:

- Whitlock Maxi stainless steel steering wheel with leather cover.
- Whitlock "Athena" cockpit pedestal.
- 3-bladed Max-Prop.
- AM15 - Ambassador rope-cutter.
- MaxPower tunnel CT 165, 11HP.

Electrical Systems

Voltage Systems:

- Ship's supply 24V.
- Mains AC ring main with 5 double, 3-pin outlet sockets located as appropriate within the layout, using Clipsal sockets (220V European type).
- 12V "Dri-Plug" at pedestal for halogen spotlight.

Battery Banks:

- 8 x 6V Gel batteries giving 400Ah for yachts 24V for domestic supply.
- 2 x 12V 88Ah Varta batteries giving 176Ah for engine starting.
- Varta battery for generator starting.

Battery Chargers:

- Mastervolt MICC Battery Monitor.
- Mastervolt Alpha Pro Regulator, 24V, 150A for charging of domestic batteries from engine.
- Mastervolt 24V, 100A battery charger / alternator charger.
- Mastervolt BTM1 and C3-RS charger controller.
- Emergency link.

Alternators:

- Yanmar 60A 'engine' alternator.
- Mastervolt, 150A, 24V.

Generator:

- Onan genset, 11kW, 12v E/R, 50Hz, 1 phase sound (2015).

Shore Power:

- 30 Amp dockside power cable in 3-core double-insulated PVC, 18m in length plus adapters. Hubbell socket in transom. Dockside end of cable fitted with 3-pin, 16 Amp plug.

Other Electrical:

- Mastervolt 220V inverter 24 / 500W.
- Mastervolt 220V Mass Sine Inverter 24 / 2500W.

Plumbing Systems

Fresh Water & Water Heating System:

- Pressurised hot and cold freshwater system.

- Hot Water from an insulated 73 litre (16 imp/19 US gallon) tank heated by the engine's heat exchanger, or by thermostatically-controlled 220V, 1.25kW immersion heater elements powered by the generator or dockside power.

Watermaker:

- Seafresh 206A – 220V AC watermaker, 104 litres / hour (23 imp / 27 US gallons).

Bilge Pumps:

- Jabsco Maxi 3000 Puppy, with Par hydro air switch.
- Henderson MkV manual bilge pump operated from the cockpit.
- Spare impeller.

Tankage

- Tank tender gauges.

Fuel:

- 950 litres (210 imp/250 US gallons) in a GRP tank.
- Racor model 500 FG fuel filter and water separator. Additional fuel hand pump.

Fresh water:

- 950 litres (210 imp/250 US gallons) in a GRP tank.

Grey/Blackwater holding tanks:

- Polypropylene holding tanks fitted to forward and aft toilets, with Wema gauge, gravity discharge and pump out systems.

Navigation and Communications Equipment

Note: AMANZI had an upgrade of her electronics in 2014 at a cost of circa £16,000.

Compasses:

- S.I.R.S Major 150mm flush-mounted compass with internal light.

Instruments:

- Raymarine ST290 System. Combines autopilot, navigation, heading and environmental data with depth and speed.
- I70+ multifunction display (2014).
- HS5 network switch (2014).
- iTC-5 instrument transducer converter (2014).

Companionway Console:

- ST290.

Chart Table:

- ST290.

Owner's Cabin:

- ST290 Graphic.

Radar/Plotter:

- Raymarine E120 with GPS.
- Raymarine E80 colour radar repeater on starboard side of companionway.
- Navionics chart plotter platinum software for entire globe.
- AIS software. AIS650 – class B transceiver (2014).

- RD418HD Digital radome 4kW 18 inch no cable (2014).
- RS130 GPS receiver with converter (2014).
- E165 15." Hybrid Touch Multifunctional display no cartography (2014).

Autopilot:

- Raymarine ST7000 autopilot.
- Raymarine ST6002 control head mounted on pedestal.
- Raymarine Smart Controller – wireless remote.
- P70 autopilot head (2014).

Windex:

- Windex at masthead.

Navtex:

- Furuno NX300

VHF radio:

- Sailor RT 5022 VHF.
- Sarcom handheld.
- Emergency VHF antenna.

SSB Radio:

- Sailor SSB.
- Wide copper strip from chart table to lazarette and twin large ground plates as SSB earth.
- Backstay insulators.

Satellite Phone:

- Thrane & Thrane Sailor with Inmarsat Fleet 33.
- Inmarsat C.

PC:

- Printer and scanner. PC installed at navigation station.
- RMK9 remote keypad (2014).
- E165 15." Hybrid Touch Multifunctional display no cartography (2014).

Domestic Equipment

Galley:

- Twin stainless steel sinks.
- Gimballed electric Force 10 electric cooker in stainless steel, with 3 hobs, grill and oven and pan holder clamps. Panasonic NNV673S – Stainless Steel Microwave.
- Front-opening stainless steel refrigerator and top-opening freezer.
- Counter tops are in Avonite "Autumn Wheat."
- Fresh water filter.
- Frigomatic W50 twin compressor with twin plate for freezer box.
- Oyster customised Wedgwood bone china yacht crockery.
- Oyster customised Sheffield stainless steel cutlery.

Heads/Showers:

- Hot & cold freshwater deck shower in transom locker.

Heating & Ventilation:

- Webasto DW Thermo 90 (5 x fan coils, 2 x in the saloon).

- 220V Cruisair air conditioning comprising of one 18,000 BTU unit to the saloon.

Entertainment:

- Alpine DVA 9861 CD/DVD with iPod interface, multi-region DVD linked to saloon TV. LG CD drive.
- Twin loudspeakers to saloon and pair of waterproof cockpit loudspeakers.
- Sharp Aquos 20" TV in saloon.

Lighting:

Interior:

- Halogen overhead lights.
- Cabin 'Minor' reading lights in stainless steel and white ceramic shade.
- Perko exterior dome lights in engine room.
- Red halogen light in galley.
- Automatic light to drinks locker and to refrigerator.
- Red "courtesy" footlights at deck saloon steps.
- Flexible chart table light.

Exterior:

- Pair of lower spreader lights.
- Lopolight LED Steaming/deck floodlight.
- Lopolight LED tri-white anchor/navigation light at masthead.
- Lopolight LED bow and stern lights.

Accommodation

Summary of Accommodation:

- Seven berths in four cabins, excluding the saloon.
- Interior joinery finished in Maple with Oyster 'Millennium' styling. Designed to be modern and co-ordinated, whilst remaining practical and durable at sea.
- Essential features include: sculpted fiddles and grabrails, "shadow-gap" joints between panels and Oyster custom knobs for lockers and drawers. The doors and saloon table have black inlay lines. The sole boards are teak with holly stripes.
- Surfaces in galley and heads in Avonite.
- Headlining in off-white vinyl.
- Upholstery in Alcantara navy blue.
- Oceanair "Skyscreens" to all deck hatches.
- Hella fans to all cabins.
- Lee cloths.

Description of layout from forwards:

From forward –

Sail Locker:

Sail and gear stowage locker with a watertight bulkhead and deck access via hatch.

Heads / Shower:

Access from both forward cabins to heads with electric PAR Quiet flush toilet, washbasin and shower stall. Counter tops in Avonite, colour "Sandpiper." Hans Grohe quality mixer taps and shower with towel rail and mirror.

Double Cabin:

Double berth to port with lockers for clothes, a vanity unit and hanging locker.

Twin Cabin:

To starboard cabin with upper and lower berths, lockers for clothes, a vanity unit and hanging locker.

Saloon:

The saloon is light and airy with surrounding windows, two of the three forward windows open, as well as the two hull portholes. There is an round table and settee area to port, a pair of lockers and a central shelf with wooden fiddles. To starboard is another settee, next to this is a locker with Bosch WVF washing machine fitted. Bar unit with glass stowage and bottle stowage in the saloon table pedestal. TV fitted in the aft starboard locker.

Navigation Area:

Chart table with stowage for navigational books and charts. The instruments are flush-mounted. AC and DC electrical panels are located behind the navigator's seat.

Galley:

Includes twin stainless steel sinks, a gimballed electric Force 10 electric cooker in stainless steel, with 3 hobs, grill and oven and pan holder clamps. Panasonic NNV673S – Stainless Steel Microwave. Plenty of stowage space for cutlery and crockery. Front-opening stainless steel refrigerator and top-opening freezer. Counter tops are in Avonite "Autumn Wheat." Storage for four wire baskets. Fresh water filter.

Aft cabin / Workshop:

Fitted as workshop with single fold-up bunk, with drawers underneath, and formica worktop surface. *Cupboard for watermaker.*

Owner's Stateroom with En-suite Heads:

With a double berth offset from centreline, curved settee, *aft facing desk*, dressing table and a large hanging locker. Abundant drawer and locker space. En-suite heads to starboard, *with electric PAR Quiet flush toilet* and separate shower stall *with teak grating*. Counter tops are in

Avonite, colour "Sandpiper." Hans Grohe quality mixer taps and shower with towel rail and mirror.

Deck Equipment

Rig:

- Cutter rigged sloop.
- Jumper struts.
- Formula Hood mast with slab reefing, painted white.
- Formula Hood Aluminium Smartboom, painted white.
- Navtec hydraulic backstay adjuster.
- Hydraulic vang.
- Second main halyard, clutches and stainless steel spreader bar for hoisting passerelle.
- Pair of folding mast steps at mast head.
- "No-Strike" ion dissipaters at masthead and mast step bonded to keel.
- Harken sliders, cars and switch-track system.
- Boom preventer lines.
- Status Omni directional aerial mounted at masthead for TV and AM/FM.
- Reckmann electric forestay furler.
- Harken manual staysail furler.
- Spinnaker gear - Package includes pole topping lift and foreguy, halyard, pair of sheets, guys, blocks and fittings. White painted Spinnaker pole stowed vertically on mast with butt hoist winch.

Winches (by Lewmar):

- #68 CEST two speed electric self-tailing primary winches.
- #46 CST self-tailing reefing line winch, for mainsail reefing, on the mast below the gooseneck.

- #48 CST self-tailing mainsheet system winch on starboard side behind cockpit coaming.
- *#48 CEST self-tailing electric mainsheet system winch on port side behind cockpit coaming.*
- #48 CST two speed, self-tailing main and genoa halyard winches fitted on mast.
- *#54CST secondaries for cutter rig.*
- *#54CEST electric halyard winch on deck beside mast.*
- *All with covers.*

Sails (by Dolphin):

- Mainsail D4 Double Taffeta Vectran Membrane fabric (Dolphin, 2015).
- Dolphin Tri-radial Genoa new 2014
- Staysail D4 Double Taffeta Vectran Membrane fabric.
- Cruising chute with squeezer. 1.5oz Rip-Stop – white, radial design.
- Bags for mainsail, staysail and genoa.

General:

- Stainless steel pulpit, pushpit, pair of midship gateway stanchions and side gates for boarding. Gate to pushpit.
- Stowage locker within the aft deck in place of gas locker.
- Two stowage lockers at the aft end of the coachroof.
- Lazarette locker with twin stainless steel gas struts.
- Quarter pushpit seats in stainless steel and teak.
- Cockpit table, finish in gloss varnish, with insulated refrigerator 2014
- Passerelle - 3m alloy and folding with bridle and handrail.
- 2m stainless steel pole on aft deck for aerials and aft deck floodlight.
- Bathing ladder.

- 12V air pump.
- Sextant.

Hatches:

- Lewmar alloy-framed deck hatches.
- Gebo alloy-framed portlights in coaming.
- Long Gebo opening ports to galley and starboard cabin.

Anchoring & Mooring Equipment:

- 34kg (75lb) CQR with 100m (328') of 12mm chain.
- Kedge anchor and chain.
- Lewmar V4, 24V windlass with remote control.
- Stainless steel mooring and cockpit cleats.
- Anchor locker with removable partition.
- Heavy mooring lines.
- Warps and fenders.

Covers, Canvas & Cushions:

- All in slate.
- Sprayhood to main companionway with Strataglass window material (typically lasts twice as long as standard vinyl and is the standard for new Oysters), zip-up central window with adjustable webbing clips and Velcro storm flaps to allow air flow to cockpit, stainless steel grab rail and leather cover all for the 3 x window option, to cover the zip up central window – with mesh solar screens. New 2014.
- Bimini replaced 2014 with Strataglass windows in roof for easy viewing of sails.
- Covers for cockpit tables, pedestals and wheels.
- Saloon table cover in vinyl.

- Tender cover.

Tender & Outboard:

- Cooney S300 electric davits (300kg max).
- Quicksilver Ocean Runner 340 with jockey sports console. Fish finder. Electric start.
- Honda BF20D outboard.

Safety Equipment:

- Liferaft stowage in both pushpits.
- 2 x Zodiac Xtrem 6 man life rafts, each with grab bags. Date of last service not known.
- Raymarine Lifetag MOB system: 6 x lifetags, base station and external alarm
- Echomax 230 Solas radar reflector.
- ACR – 4 x personal EPIRBs.
- 2 x Horseshoe buoy.
- Plastimo Solas rescue rings.
- 12 x Adult lifejackets.
- 4 x Children's lifejackets.
- Harnesses.
- 4 x Adult Spinlock lifejackets.
- Parachute retrieval system.
- Sea drogue.
- Jackstays.
- Para sea anchor and drogue bridle.
- Fog horn with spare canister.
- Bosun's chair.
- Para anchors.

- Various wooden skin fitting bungs.
- Box of Raymarine life tags.
- Emergency tiller.
- Hydraulic wire cutters.
- Offshore first aid kit Category C.

Fire-fighting equipment:

- Various including automatic fire extinguisher in engine bay.

Alarms:

- Engine instruments include alarms to monitor oil levels and temperature.
- Wireless boat alarm with remote key fobs.

Broker's Remarks

AMANZI is a yachtsman's Oyster with her fully battened mainsail and sailing layout. She is a G5 Oyster with modern styling and a stunning maple interior which is light, airy and spacious. She has an alternative layout forward with a double to port and an upper and lower berth cabin to starboard. They are both excellent passagemaking cabins. She has full time crew onboard and is maintained in full MCA class. She has been consistently and carefully maintained and updated.

Note: Comprehensive tool kit, including battery power drill, Makita drill bit and saw set, socket set and Heyco marine tool kit, additional Reckman tool kit and a comprehensive set of spares and manuals available onboard.

Exclusions

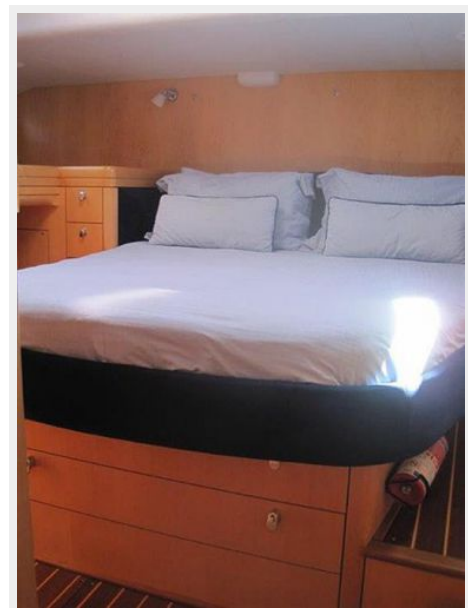
Owner's personal belongings.

Disclaimer

The Company offers the details of this vessel or yacht in good faith but cannot guarantee or warrant the accuracy of this information nor warrant the condition of the vessel. A buyer should instruct his representatives, agents, or his surveyors, to investigate such details as the buyer desires validated. This vessel or yacht is offered subject to prior sale, price change, or withdrawal without notice.

PHOTOS













CONTACTS

Andrey Shestakov, leading yacht broker of the sales department of Shestakov Yacht Sales Inc. Shestakov Yacht Sales Inc., the official representative of the Miami/Fort Lauderdale FL headquarters.

Contact details

Email: andrey@shestakovyachtsales.com

Web: shestakovyachtsales.com/en/

Telephones

USA: +1(954)274-4435

Office hours

Monday – Saturday: **9:00 - 21:00** EDT

Sunday: **closed**

Address



Harbour Towne Marina, 850 NE 3rd St,
STE 213, Dania, FL 33004