

AMBERJACK — BERTRAM



Builder: BERTRAM

Year Built: 1981

Model: Sport Fisherman

Price: PRICE ON APPLICATION

Location: United States

LOA: 35' 4" (10.77m)

Beam: 13' 3" (4.04m)

Max Draft: 3' 2" (0.97m)

Our experienced yacht broker, Andrey Shestakov, will help you choose and buy a yacht that best suits your needs **AMBERJACK — BERTRAM** from our catalogue. Presently, at Shestakov Yacht Sales Inc., we have a wide variety of yachts available on our sale's list. We also work in close contact with all the big yacht manufacturers from all over the world.

If you would like to buy a yacht **AMBERJACK — BERTRAM** or would like help answering any questions concerning purchasing, selling or chartering a yacht, please call **+1(954)274-4435**

TABLE OF CONTENTS

TABLE OF CONTENTS	2
SPECIFICATIONS	4
Overview	4
Basic Information	4
Dimensions	4
Speed, Capacities and Weight	4
Accommodations	4
Hull and Deck Information	5
Engine Information	5
DETAILED INFORMATION	6
Accommodations	6
Main Cabin	6
Head	6
Galley	6
Helm / Electronics and Navigation	6
Deck	7
Engine and Mechanical Equipment	7
Electrical System / Equipment	7
Cockpit / Fishing Equipment	7
Exclusions	7
Salesman's Comments	8
Exclusions	8
Disclaimer	8
PHOTOS	9
Salon 1 - Forward V-Berth	9
Salon 2 - Settee Sleeper	9
Salon 3 - Sofa	9
Salon 4 - TV	9

Head	10
Galley 1	10
Galley 2 - Stove	10
Galley 3 - Refrigerator	10
Helm / Electronics & Navigation 2 - Overhead Gauges	11
Helm / Electronics & Navigation 1	11
Helm / Electronics & Navigation 3 - Radar	11
Deck - Forward Helm Seating	11
Engine & Mechanical Equipment 1	12
Engine & Mechanical Equipment 2	12
Engine & Mechanical Equipment 3 - Water Heater	12
Electrical System / Equipment - Electrical Panel	12
Cockpit / Fishing Equipment 2 - Cockpit Storage	13
Cockpit / Fishing Equipment 1	13
Cockpit / Fishing Equipment 3 - Rod Holders	13
Cockpit / Fishing Equipment 4	13
Cockpit / Fishing Equipment 5	14
Cockpit / Fishing Equipment 6	14
Rear Profile	14
CONTACTS	15
Contact details	15
Telephones	15
Office hours	15
Address	15

SPECIFICATIONS

Overview

This is a 35' Bertram Flybridge. 1981 was the first year for the tournament-style Flybridge with forward seating. Same owner for the past fifteen years. Boat has been cared for with love and attention. She is worth a look by anyone in the market for a 35 Bertram. **PRICE REDUCED FOR QUICK SALE! OWNERS ARE READY TO SELL!!! "AMBERJACK" IS IN THE WATER AND READY TO GO!!! ACT NOW!!!**

Basic Information

Category: Sport Fisherman

Sub Category: Convertible

Model Year: 1981

Year Built: 1981

Country: United States

Vessel Top: Hardtop

Fly Bridge: Yes

Cockpit: Yes

Dimensions

LOA: 35' 4" (10.77m)

Beam: 13' 3" (4.04m)

Max Draft: 3' 2" (0.97m)

Speed, Capacities and Weight

Displacement: 22500 Pounds

Water Capacity: 15 Gallons

Fuel Capacity: 360 Gallons

Accommodations

Total Berths: 1

Sleeps: 5

Total Heads: 1

Hull and Deck Information

Hull Material: Fiberglass

Deck Material: Fiberglass

Hull Finish: Plastic

Engine Information

Engines: 2

Manufacturer: Caterpillar

Model: 3208T

Engine Type: Inboard

Fuel Type: Diesel

DETAILED INFORMATION

Accommodations

Sleeps five owners and guests. V-berth forward sleeps two plus sofa bed sleeps two plus sleeper settee sleeps one for a total of five berths. One Head.

Main Cabin

- Rod storage
- Sleeper sofa
- Sleeper settee
- AM / FM radio
- TV set w/ DVD player
- V-berth forward w/ storage under

Head

- Sink
- Cabinets
- Marine head
- Medicine cabinet

Galley

- Hot water
- Microwave oven
- Sub-Zero refrigerator
- Princess oven w/ glass cook top

Helm / Electronics and Navigation

- Compass
- Garmin GPS
- Icom VHF radio
- Raymarine auto pilot
- Raymarine VHF radio
- Raymarine Radar / Chart plotter / Digital fish finder / GPS

Deck

- Flybridge lights
- Weblon hardtop

Engine and Mechanical Equipment

- Heating
- Water heater
- Air conditioning
- Electric bilge pump
- Burns 12 gph per engine at cruise speed
- Twin 300 hp. Diesel I/B 1981 Caterpillar 3208T's w/ 2900 hrs. (majority of these hours were trolling hours)
- Fuel capacity is 360 gallons (prior owner converted the water tank to fuel) w/ Racor on the line that is transferred from the auxiliary tank into the main tank

Electrical System / Equipment

- Generator
- Battery charger
- (2) 30 amp. Shore power inlets

Cockpit / Fishing Equipment

- Outriggers
- Fiberglass Deck
- Cockpit speakers
- Under water lights
- Cockpit tackle center
- Tackle locker under step
- Quartz lights under Cockpit coaming
- (9) Rod holders for clearing the Deck
- (6) Rod holders in haunch for storage
- (7) Rod holders mounted on gunwales
- (3) Rod holders on aft rail of Flybridge
- (6) Rod holders in Cockpit covering boards
- Cockpit coaming w/ custom made cabinets underneath

Exclusions

Owner's personal gear and items.

Salesman's Comments

This is a 35' Bertram Flybridge. 1981 was the first year for the tournament-style Flybridge with forward seating. Same owner for the past fifteen years. Boat has been cared for with love and attention. She is worth a look by anyone in the market for a 35 Bertram. **PRICE REDUCED FOR QUICK SALE! OWNERS ARE READY TO SELL!!! "AMBERJACK" IS IN THE WATER AND READY TO GO!!! ACT NOW!!!**

Exclusions

Owner's personal belongings.

Disclaimer

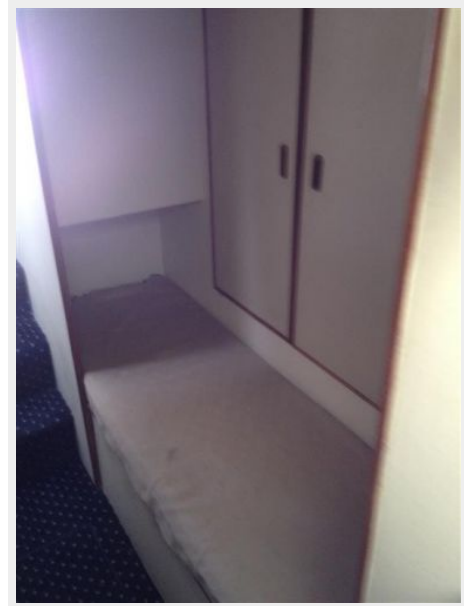
The Company offers the details of this vessel or yacht in good faith but cannot guarantee or warrant the accuracy of this information nor warrant the condition of the vessel. A buyer should instruct his representatives, agents, or his surveyors, to investigate such details as the buyer desires validated. This vessel or yacht is offered subject to prior sale, price change, or withdrawal without notice.

PHOTOS

Salon 1 - Forward V-Berth



Salon 2 - Settee Sleeper



Salon 3 - Sofa



Salon 4 - TV



Head



Galley 1



Galley 2 - Stove



Galley 3 - Refrigerator



Helm / Electronics & Navigation 1



Helm / Electronics & Navigation 2 - Overhead Gauges



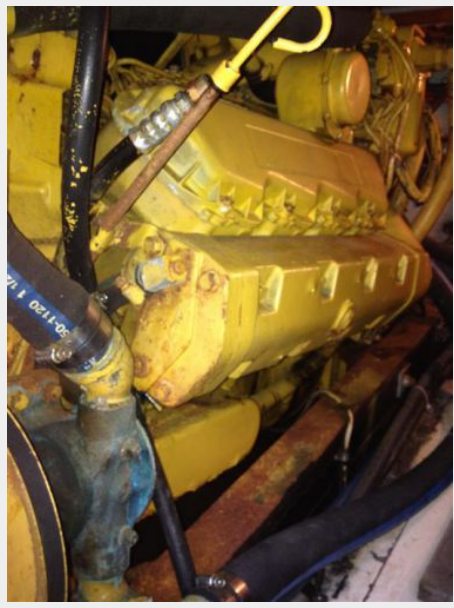
Helm / Electronics & Navigation 3 - Radar



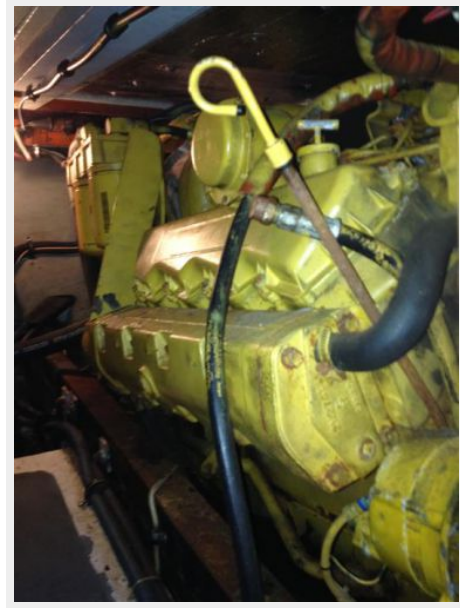
Deck - Forward Helm Seating



Engine & Mechanical Equipment 1



Engine & Mechanical Equipment 2



Engine & Mechanical Equipment 3 - Water Heater



Electrical System / Equipment - Electrical Panel



Cockpit / Fishing Equipment 2 - Cockpit Storage

Cockpit / Fishing Equipment 1

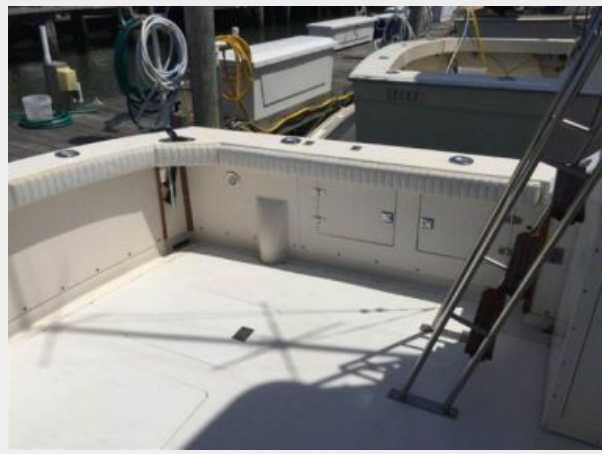


Cockpit / Fishing Equipment 3 - Rod Holders

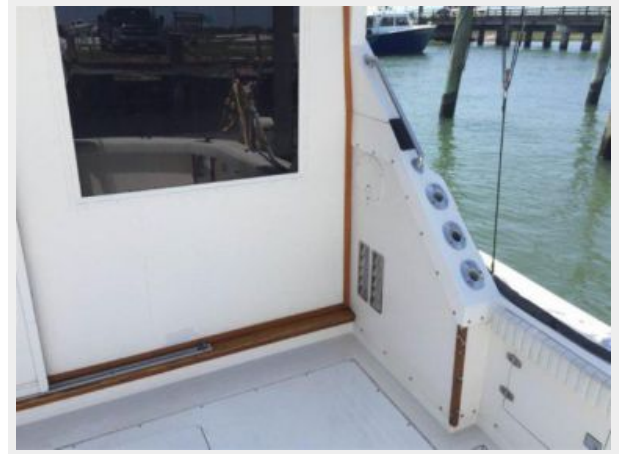
Cockpit / Fishing Equipment 4



Cockpit / Fishing Equipment 5



Cockpit / Fishing Equipment 6



Rear Profile



CONTACTS

Andrey Shestakov, leading yacht broker of the sales department of Shestakov Yacht Sales Inc. Shestakov Yacht Sales Inc., the official representative of the Miami/Fort Lauderdale FL headquarters.

Contact details

Email: andrey@shestakovyachtsales.com

Web: shestakovyachtsales.com/en/

Telephones

USA: +1(954)274-4435

Office hours

Monday – Saturday: **9:00 - 21:00** EDT

Sunday: **closed**

Address



Harbour Towne Marina, 850 NE 3rd St,
STE 213, Dania, FL 33004