

PANACEA IV — BURGER



Builder: BURGER

Year Built: 1984

Model: Motor Yacht

Price: PRICE ON APPLICATION

Location: United States

LOA: 86' 0" (26.21m)

Beam: 19' 4" (5.89m)

Max Draft: 5' 4" (1.63m)

Cruise Speed: 14 Kts. (16 MPH)

Max Speed: 18 Kts. (21 MPH)

Our experienced yacht broker, Andrey Shestakov, will help you choose and buy a yacht that best suits your needs **PANACEA IV — BURGER** from our catalogue. Presently, at Shestakov Yacht Sales Inc., we have a wide variety of yachts available on our sale's list. We also work in close contact with all the big yacht manufacturers from all over the world.

If you would like to buy a yacht **PANACEA IV — BURGER** or would like help answering any questions concerning purchasing, selling or chartering a yacht, please call **+1(954)274-4435**

TABLE OF CONTENTS

TABLE OF CONTENTS	2
SPECIFICATIONS	4
Overview	4
Basic Information	4
Dimensions	4
Speed, Capacities and Weight	4
Accommodations	5
Hull and Deck Information	5
Engine Information	5
DETAILED INFORMATION	6
Accommodations	6
Salon	6
Galley	6
Pilothouse	6
Master Stateroom	6
Guest Staterooms, Port & Starboard	7
Crew Quarters	7
Flybridge/Boat Deck	7
Electronics and Navigation Equipment	7
Electrical	7
Broker Comments	7
Exclusions	8
Disclaimer	8
PHOTOS	9
Aft Deck	9
Salon	9
Salon	9
Salon	9

Galley	9
Galley	9
Master Stateroom	10
Master Stateroom	10
Master Head	10
Master Stateroom	10
Master Head	10
Guest Stateroom	10
Guest Stateroom Head	11
Guest Stateroom	11
Day Head - Main Deck	11
Lower Helm	11
Flybridge	11
Flybridge	11
Tender on Flybridge	12
Bow	12
Bow	12
Side Decks	12
Side Decks	12
Engine Room	12
Engine Room	13
CONTACTS	14
Contact details	14
Telephones	14
Office hours	14
Address	14

SPECIFICATIONS

Overview

PANACEA IV offers three double staterooms aft, with separate crew quarters for four.

Basic Information

Category: Motor Yacht

Sub Category: Raised Pilothouse

Model Year: 1984

Year Built: 1984

Country: United States

Coast Guard #: 675982

Vessel Top: Raised Pilothouse

Fly Bridge: Yes

Dimensions

LOA: 86' 0" (26.21m)

Beam: 19' 4" (5.89m)

Max Draft: 5' 4" (1.63m)

Speed, Capacities and Weight

Cruise Speed: 14 Kts. (16 MPH)

Max Speed: 18 Kts. (21 MPH)

Gross Tonnage: 116 Pounds

Water Capacity: 950 Gallons

Holding Tank: 150 Gallons

Fuel Capacity: 2777 Gallons

Accommodations

Total Cabins: 3

Sleeps: 6

Total Heads: 4

Captain Cabin: True

Crew Cabin: 2

Crew Berths: 3

Crew Heads: 1

Hull and Deck Information

Hull Material: Aluminum

Deck Material: Teak

Hull Configuration: Semi-Displacement

Hull Designer: Henry Burger

Exterior Designer: Jack Hargrave

Engine Information

Engines: 2

Manufacturer: General Motors

Model: 12V71TI

Engine Type: Inboard

Fuel Type: Diesel

DETAILED INFORMATION

Accommodations

PANACEA IV offers three staterooms aft, with separate crew quarters for four forward.

Salon

Aft of the galley is the spacious salon. There is a U shaped sofa sectional to starboard with a glass cocktail table centered and occasional seating opposite. The salon offers a dining table on the starboard side. A bar is located forward and offers plenty of space for guests to relax. Large windows compliment the salon and offer great views.

Galley

The galley is located to port and forward of the salon. Recently updated with stainless steel appliances, the galley is well thought out and offers abundant amounts of storage. Two stainless steel sinks are located in the port side counter with a large opening window outboard. There is ample counter space and storage in cabinets above and below.

Pilothouse

The pilothouse, finished in teak, is positioned forward of the salon and aft of the galley. It has a built-in bench seat with seating for three with chart storage drawers beneath. Visibility is excellent from the pilothouse with windows front and rear and on both sides. A stairway aft to port leads up the flybridge area.

Master Stateroom

The full width master cabin is aft with walk-around king sized bed with bedside cabinets. There is a built-in bureau on the port side of the stateroom with makeup vanity, numerous drawers, and television. Two large closets located along the aft bulkhead. All closets are cedar lined and nicely ventilated with custom louvered doors. There are opening port lights to port and starboard.

The master head is forward with a tiled stall shower and Avonite counter tops with ceramic bowl sink. The heads throughout are fresh water flushing Sealand Vacuflush with ceramic bowls. **PANACEA IV** was originally built with three heads in the owner/guest area,. The starboard guest head area was incorporated in forming a much larger master head. The port guest head now services both guest staterooms.

Guest Staterooms, Port & Starboard

The two guest cabins are forward of the master with a hallway between. Both are furnished with twin lower berths separated by a night stand.

Crew Quarters

Two crew cabins are all the way forward and accessed by a stairway forward of the galley. The Captain's cabin offers a double berth. Upper and lower berths to starboard, laundry and locker storage opposite. The crew head and shower are forward of the crew cabin. A crew lounge is aft to starboard and the galley opposite to port. The engine room is accessed from the galley through a watertight engine room bulkhead door. Forward of the galley and crew access stairway is a dining salon. This area could be reconfigured into a media room, library, or office.

Flybridge/Boat Deck

The flybridge has a centerline helm station forward with full engine controls and gauges. There is a pedestal mounted helm chair facing forward with excellent visibility over the clear plexiglass windscreen forward. There is additional flybridge bench seating to port and starboard and aft just forward of the hinged radar mast and boat deck. Dry storage can be found beneath the bench seating. A Bimini top protects the flybridge seating area.

Aft of the flybridge bench seating is the boat deck with a pedestal mounted electric davit, chocks, and Boston Whaler 15' tender.

Electronics and Navigation Equipment

GPS Map 7212 Wagner MK4 autopilot Naiad stabilizers Standard Horizon VHF Kenyon wind speed SEA 112 SSB Furuno radar On flybridge Furuno read-out speed, course, and depth. Carlisle & Finch search light control

Electrical

(2) Westerbeke 32 kW generators, rebuilt 2005

Broker Comments

Burger lovers will immediately recognize **PANACEA IV** as one of Henry Burger's best example of the beauty and grace of these iconic yachts. Designed by Jack Hargrave, **PANACEA IV** epitomizes the elegance of this true American classic builder. Her raised pilothouse configuration provides an immense saloon with lots of light and wonderful sightlines. The layout

offers formal yachting at its best. Large crews' quarters, dining saloon and a chef's galley provides the elegant lifestyle that Burgers were known for. **PANACEA IV** with updating and redecorating can once again be the perfect vessel for true classic yachting. **PANACEA IV** is berthed at the Rybovich Shipyard in West Palm Beach until sold. She is being maintained by her full time captain who has been looking after her for the past twelve years.

Exclusions

Owner's personal belongings.

Disclaimer

The Company offers the details of this vessel or yacht in good faith but cannot guarantee or warrant the accuracy of this information nor warrant the condition of the vessel. A buyer should instruct his representatives, agents, or his surveyors, to investigate such details as the buyer desires validated. This vessel or yacht is offered subject to prior sale, price change, or withdrawal without notice.

PHOTOS

Aft Deck



Salon



Salon



Salon



Galley



Galley



Master Stateroom



Master Stateroom



Master Stateroom



Master Head



Master Head



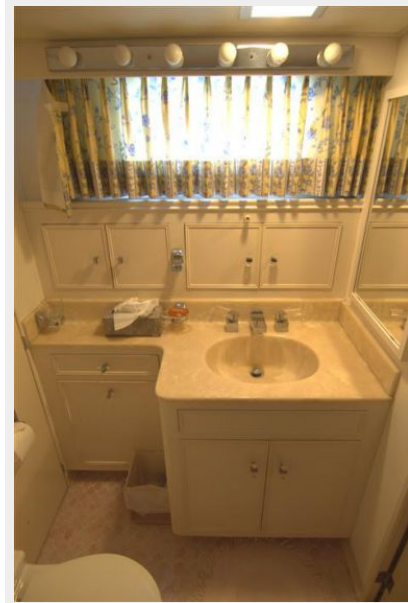
Guest Stateroom



Guest Stateroom



Guest Stateroom Head



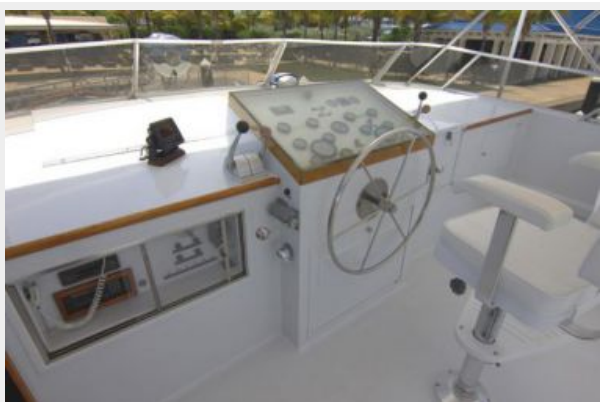
Day Head - Main Deck



Lower Helm



Flybridge



Flybridge



Tender on Flybridge



Bow



Bow



Side Decks



Side Decks



Engine Room



Engine Room



CONTACTS

Andrey Shestakov, leading yacht broker of the sales department of Shestakov Yacht Sales Inc. Shestakov Yacht Sales Inc., the official representative of the Miami/Fort Lauderdale FL headquarters.

Contact details

Email: andrey@shestakovyachtsales.com

Web: shestakovyachtsales.com/en/

Telephones

USA: +1(954)274-4435

Office hours

Monday – Saturday: **9:00 - 21:00** EDT

Sunday: **closed**

Address



Harbour Towne Marina, 850 NE 3rd St,
STE 213, Dania, FL 33004