

PANACEA IV — BURGER



Судостроитель: BURGER

Год постройки: 1984

Модель: Моторная яхта

Цена: **ЦЕНА ЯХТЫ ПО ЗАПРОСУ**

Местонахождение: United States

Длина общая: 86' 0" (26.21m)

Ширина: 19' 4" (5.89m)

Макс. осадка: 5' 4" (1.63m)

Крейс. скорость: 14 Kts. (16 MPH)

Макс. скорость: 18 Kts. (21 MPH)

Купить **PANACEA IV — BURGER** а также выбрать подходящую вам яхту из нашего каталога яхт вам поможет опытный яхтенный брокер Андрей Шестаков. На сегодняшний день компания **Shestakov Yacht Sales Inc.** имеет большое количество яхт в собственном списке продаж, а также тесно сотрудничает со всеми крупными яхтенными производителями по всему миру.

Для того чтобы купить яхту **PANACEA IV — BURGER** а также проконсультироваться по любому вопросу связанному с покупкой, продажей, чартером яхт позвоните по телефону **+7(918)465-66-44**.

ОГЛАВЛЕНИЕ

ОГЛАВЛЕНИЕ	2
ХАРАКТЕРИСТИКИ	4
Обзор	4
Основная информация	4
Размеры	4
Скорость, вместимость и масса	4
Размещение	5
Корпус и палуба	5
Информация о двигателе	5
ПОДРОБНОЕ ОПИСАНИЕ	6
Accommodations	6
Salon	6
Galley	6
Pilothouse	6
Master Stateroom	6
Guest Staterooms, Port & Starboard	7
Crew Quarters	7
Flybridge/Boat Deck	7
Electronics and Navigation Equipment	7
Electrical	7
Broker Comments	7
Исключения	8
Отказ от ответственности	8
ФОТОГРАФИИ	9
Aft Deck	9
Salon	9
Salon	9
Salon	9

Galley	9
Galley	9
Master Stateroom	10
Master Stateroom	10
Master Head	10
Master Stateroom	10
Master Head	10
Guest Stateroom	10
Guest Stateroom Head	11
Guest Stateroom	11
Day Head - Main Deck	11
Lower Helm	11
Flybridge	11
Flybridge	11
Tender on Flybridge	12
Bow	12
Bow	12
Side Decks	12
Side Decks	12
Engine Room	12
Engine Room	13
КОНТАКТЫ	14
Контактная информация	14
Телефоны	14
Время работы	14
Адрес	14

ХАРАКТЕРИСТИКИ

Обзор

PANACEA IV offers three double staterooms aft, with separate crew quarters for four.

Основная информация

Тип судна: Моторная яхта

Подкатегория: Raised Pilothouse

Модельный год: 1984

Год постройки: 1984

Страна: United States

Номер регистрации в береговой охране: 675982

Верх: Raised Pilothouse

Открытая палуба мостика: Да

Размеры

Длина общая: 86' 0" (26.21m)

Ширина: 19' 4" (5.89m)

Макс. осадка: 5' 4" (1.63m)

Скорость, вместимость и масса

Крейс. скорость: 14 Kts. (16 MPH)

Макс. скорость: 18 Kts. (21 MPH)

Чистый вес: 116 Pounds

Вместимость воды: 950 Gallons

Вместимость сточного бака: 150 Gallons **Объем топливного бака:** 2777 Gallons

Размещение

Всего кают: 3

Спальные места: 6

Всего ком. состава: 4

Каюта капитана: Да

Каюты экипажа: 2

Койки экипажа: 3

Комм. состав экипажа: 1

Корпус и палуба

Материал корпуса: Aluminum

Материал палубы: Teak

Комплектация корпуса: Semi-Displacement

Дизайнер корпуса: Henry Burger

Дизайнер экстерьера: Jack Hargrave

Информация о двигателе

Двигатели: 2

Производитель: General Motors

Модель: 12V71TI

Тип двигателя: Inboard

Тип топлива: Diesel

ПОДРОБНОЕ ОПИСАНИЕ

Accommodations

PANACEA IV offers three staterooms aft, with separate crew quarters for four forward.

Salon

Aft of the galley is the spacious salon. There is a U shaped sofa sectional to starboard with a glass cocktail table centered and occasional seating opposite. The salon offers a dining table on the starboard side. A bar is located forward and offers plenty of space for guests to relax. Large windows compliment the salon and offer great views.

Galley

The galley is located to port and forward of the salon. Recently updated with stainless steel appliances, the galley is well thought out and offers abundant amounts of storage. Two stainless steel sinks are located in the port side counter with a large opening window outboard. There is ample counter space and storage in cabinets above and below.

Pilothouse

The pilothouse, finished in teak, is positioned forward of the salon and aft of the galley. It has a built-in bench seat with seating for three with chart storage drawers beneath. Visibility is excellent from the pilothouse with windows front and rear and on both sides. A stairway aft to port leads up the flybridge area.

Master Stateroom

The full width master cabin is aft with walk-around king sized bed with bedside cabinets. There is a built-in bureau on the port side of the stateroom with makeup vanity, numerous drawers, and television. Two large closets located along the aft bulkhead. All closets are cedar lined and nicely ventilated with custom louvered doors. There are opening port lights to port and starboard.

The master head is forward with a tiled stall shower and Avonite counter tops with ceramic bowl sink. The heads throughout are fresh water flushing Sealand Vacuflush with ceramic bowls.

PANACEA IV was originally built with three heads in the owner/guest area,. The starboard guest head area was incorporated in forming a much larger master head. The port guest head now services both guest staterooms.

Guest Staterooms, Port & Starboard

The two guest cabins are forward of the master with a hallway between. Both are furnished with twin lower berths separated by a night stand.

Crew Quarters

Two crew cabins are all the way forward and accessed by a stairway forward of the galley. The Captain's cabin offers a double berth. Upper and lower berths to starboard, laundry and locker storage opposite. The crew head and shower are forward of the crew cabin. A crew lounge is aft to starboard and the galley opposite to port. The engine room is accessed from the galley through a watertight engine room bulkhead door. Forward of the galley and crew access stairway is a dining salon. This area could be reconfigured into a media room, library, or office.

Flybridge/Boat Deck

The flybridge has a centerline helm station forward with full engine controls and gauges. There is a pedestal mounted helm chair facing forward with excellent visibility over the clear plexiglass windscreen forward. There is additional flybridge bench seating to port and starboard and aft just forward of the hinged radar mast and boat deck. Dry storage can be found beneath the bench seating. A Bimini top protects the flybridge seating area.

Aft of the flybridge bench seating is the boat deck with a pedestal mounted electric davit, chocks, and Boston Whaler 15' tender.

Electronics and Navigation Equipment

GPS Map 7212 Wagner MK4 autopilot Naiad stabilizers Standard Horizon VHF Kenyon wind speed SEA 112 SSB Furuno radar On flybridge Furuno read-out speed, course, and depth. Carlisle & Finch search light control

Electrical

(2) Westerbeke 32 kW generators, rebuilt 2005

Broker Comments

Burger lovers will immediately recognize **PANACEA IV** as one of Henry Burger's best example of the beauty and grace of these iconic yachts. Designed by Jack Hargrave, **PANACEA IV** epitomizes the elegance of this true American classic builder. Her raised pilothouse configuration provides an immense saloon with lots of light and wonderful sightlines. The layout

offers formal yachting at its best. Large crews' quarters, dining saloon and a chef's galley provides the elegant lifestyle that Burgers were known for. **PANACEA IV** with updating and redecorating can once again be the perfect vessel for true classic yachting. **PANACEA IV** is berthed at the Rybovich Shipyard in West Palm Beach until sold. She is being maintained by her full time captain who has been looking after her for the past twelve years.

Исключения

При продаже яхты исключаются личные вещи владельца.

Отказ от ответственности

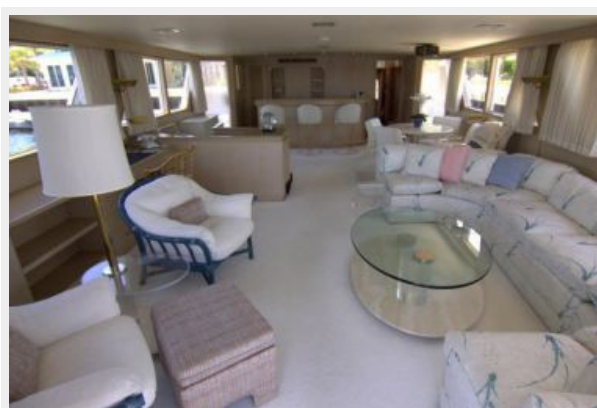
Компания предоставляет описание судна или яхты добросовестно, но не может гарантировать точность этой информации, а также не ручается за техническое состояние. Покупатель должен проинструктировать своих агентов или оценщиков исследовать представленную информацию более подробно, по собственному желанию. Продажа судна или яхты, изменение цены или снятие с продажи будет происходить без предварительного уведомления.

ФОТОГРАФИИ

Aft Deck



Salon



Salon



Salon



Galley



Galley



Master Stateroom



Master Stateroom



Master Stateroom



Master Head



Master Head



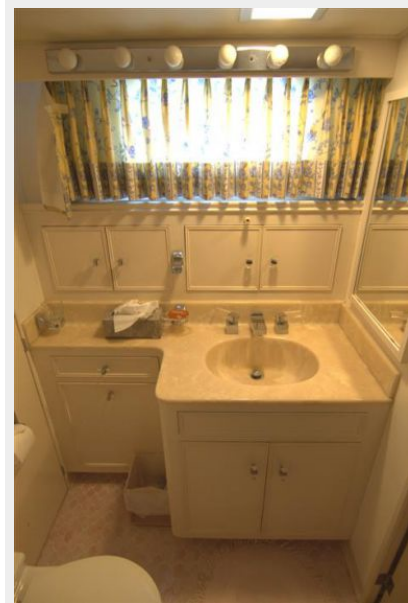
Guest Stateroom



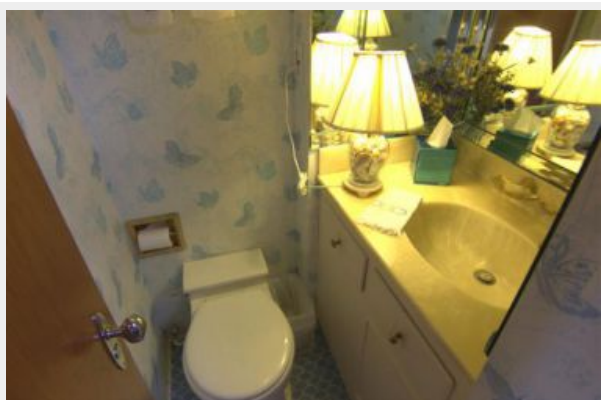
Guest Stateroom



Guest Stateroom Head



Day Head - Main Deck



Lower Helm



Flybridge



Flybridge



Tender on Flybridge



Bow



Bow



Side Decks



Side Decks



Engine Room



Engine Room



КОНТАКТЫ

Андрей Шестаков (Andrey Shestakov) – ведущий яхтенный брокер отдела продаж яхт и судов компании Shestakov Yacht Sales Inc. Официальный представитель Shestakov Yacht Sales Inc. для русскоговорящих клиентов в центральном офисе компании в Майами/Форт Лодердейл/Флорида/США.

Контактная информация

Email: andrey@shestakovyachtsales.com

Web: shestakovyachtsales.com

Телефоны

Краснодарский край: **+7(918)465-66-44**

США, Майами, Флорида: **+1(954)274-4435**

Время работы

Понедельник – Суббота: **9:00 - 21:00**
EDT

Воскресенье: **Закрито**

Адрес



Harbour Towne Marina, 850 NE 3rd St,
STE 213, Dania, FL 33004