

## DARK STAR — HINCKLEY



**Судостроитель:** HINCKLEY

**Год постройки:** 1975

**Модель:** Cruising/Racing Sailboat

**Цена:** ЦЕНА ЯХТЫ ПО ЗАПРОСУ

**Местонахождение:** United States

**Длина общая:** 48' 5" (14.76m)

**Ширина:** 13' 0" (3.96m)

**Мин. осадка:** 5' 6" (1.68m)

**Макс. осадка:** 11' 4" (3.45m)

**Крейс. скорость:** 7 Kts. (8 MPH)

Купить **DARK STAR — HINCKLEY** а также выбрать подходящую вам яхту из нашего каталога яхт вам поможет опытный яхтенный брокер Андрей Шестаков. На сегодняшний день компания **Shestakov Yacht Sales Inc.** имеет большое количество яхт в собственном списке продаж, а также тесно сотрудничает со всеми крупными яхтенными производителями по всему миру.

Для того чтобы купить яхту **DARK STAR — HINCKLEY** а также проконсультироваться по любому вопросу связанному с покупкой, продажей, чартером яхт позвоните по телефону **+7(918)465-66-44**.

# ОГЛАВЛЕНИЕ

ОГЛАВЛЕНИЕ	2
ХАРАКТЕРИСТИКИ	4
Обзор	4
Основная информация	4
Размеры	4
Скорость, вместимость и масса	5
Размещение	5
Корпус и палуба	5
Информация о двигателе	5
ПОДРОБНОЕ ОПИСАНИЕ	6
REMARKS	6
ACCOMMODATIONS	6
INTERIOR	7
ELECTRICAL SYSTEM	8
ELECTRONICS and NAVIGATION EQUIPMENT	8
SAILS, RIGGING and CANVAS	8
ENGINE and MECHANICAL EQUIPMENT	8
PLUMBING	9
HULL and DECK EQUIPMENT	9
ADDITIONAL INFO	10
EXCLUSIONS	10
Исключения	10
Отказ от ответственности	10
ФОТОГРАФИИ	11
Main Salon Looking Forward	11
Port Settee	11
Port Settee with Pilot Berth Outboard	11
Stbd. Settee, Locker Detail	11

---

Stateroom Storage	12
Forward Stateroom	12
Nav Station	12
Galley	12
Companionway Stairs	13
Head	13
Wide Walk-around Decks	13
Cockpit	13
Engine	14
Sailing	14
At Anchor	14
Aerial View	14
Bow	14
Integral Rudder	14
<b>КОНТАКТЫ</b>	<b>15</b>
Контактная информация	15
Телефоны	15
Время работы	15
Адрес	15

# ХАРАКТЕРИСТИКИ

## Обзор

A very unique Sou'wester -- the last of only five built. DARK STAR has been constantly upgraded with significant refits in 1996, 2006 and 2013. All exterior teak was stripped and refinished in 2015.

The Tripp design is known for its classic beauty and excellent sailing capabilities. DARK STAR, maintained in excellent condition, won Division H of the 2015 Figawi Regatta (Hyannis to Nantucket) in strong wind conditions.

She has a beautifully redesigned interior with reconfigured master stateroom, two heads, a galley and main salon. All systems have been restored and/or upgraded. She is a very special yacht with an exceptional pedigree, available for a fraction of the cost of replacement. A family heirloom destined to please for generations, she is well worth inspecting.

## Основная информация

**Тип судна:** Cruising/Racing Sailboat

**Модельный год:** 1975

**Год постройки:** 1975

**Год обновления:** 2013

**Страна:** United States

**Регистрационный номер:** 563972

**Верх:** Dodger

## Размеры

**Длина общая:** 48' 5" (14.76m)

**Длина по ватерлинии:** 34' 6" (10.52m)

**Ширина:** 13' 0" (3.96m)

**Мин. осадка:** 5' 6" (1.68m)

**Макс. осадка:** 11' 4" (3.45m)

## Скорость, вместимость и масса

---

**Крейс. скорость:** 7 Kts. (8 MPH)

**Водоизмещение:** 36000 Pounds

**Вместимость воды:** 200 Gallons

**Вместимость сточного бака:** 15 Gallons

**Объем топливного бака:** 200 Gallons

## Размещение

---

**Всего кают:** 1

**Всего коек:** 3

**Спальные места:** 5

**Всего ком. состава:** 2

## Корпус и палуба

---

**Материал корпуса:** Fiberglass

**Материал палубы:** Fiberglass

**Комплектация корпуса:** Centerboard

**Дизайнер корпуса:** Bill Tripp

## Информация о двигателе

---

**Двигатели:** 1

**Производитель:** Yanmar

**Модель:** Turbo

**Тип двигателя:** Inboard

**Тип топлива:** Diesel

---

# ПОДРОБНОЕ ОПИСАНИЕ

---

## REMARKS

---

A very unique Sou'wester -- the last of only five built. DARK STAR has been constantly upgraded with significant refits in 1996, 2006 and 2013. All exterior teak was stripped and refinished in 2015.

The Tripp design is known for its classic beauty and excellent sailing capabilities. DARK STAR, maintained in excellent condition, won Division H of the 2015 Figawi Regatta (Hyannis to Nantucket) in strong wind conditions.

She has a beautifully redesigned interior with reconfigured master stateroom, two heads, a galley and main salon. All systems have been restored and/or upgraded. She is a very special yacht with an exceptional pedigree, available for a fraction of the cost of replacement. A family heirloom destined to please for generations, she is well worth inspecting.

## ACCOMMODATIONS

---

### MAIN SALON

Features include headroom of 6'-4", ample storage and dining comfort. The U-shaped dinette with centerline drop-leaf table has custom red leather "Connolly"-style cushions. The custom pedestal dining table flips up to seat up to eight. There is a lovely bookcase to port with storage lockers at each end. Large storage areas with one drawer are located below the dining settee. Entertainment center, locker storage and bar above and outboard with sliding paneled doors. There is also a pull-out settee/berth.

More features include:

Large butterfly hatch, custom designed and built for added ventilation, light and style, augments the custom lighting for reading and ambience. Large, full-length locker opposite main head. Integral handrails outboard port and starboard.

### GALLEY

DARK STAR'S galley is impressive, with Corian counters, Corian sinks, modern spigot, outstanding storage and lighting, lockers galore, custom wine rack and more.

She has a classic Shipmate propane stove, large Grunert top-loading refrigerator and freezer and custom shelves and baskets allowing easy access to items. Her Grunert system is both 110, 125 volts AC and additionally has an engine-driven compressor unit. The system is a holdover-type.

Features:

- Wine rack and liquor cabinet with rack
- Corian counters (sand color)
- Corian double sink
- New custom English sink faucet
- Microwave
- 3-Burner stove with oven; (4) propane tanks w/ gauges
- New Xintrex S-2A propane monitor and control
- Custom spice rack
- Miscellaneous pans, dishes, utensils

## DAY HEAD

The day head is forward of the main salon and has a new fresh/salt water electric head. Sink with Corian counters, medicine cabinet and telephone shower. Adjacent to it is the master head.

## MASTER HEAD

The master head is forward to port of the main salon and features upgraded Corian counters, skipper toilet, cedar-lined lockers and custom cabinets.

## FORWARD STATEROOM

The master berth forward was custom-modified by Paul Gardiner in 1998 to create a larger berth and to update the cabinetry and fittings, significantly modernizing these areas. There is great storage in drawers, closets and compartments. The sleeping berths are nearly seven feet in length. The cabin also has a Raymarine multi-function display, allowing views of headings, speeds, wind angles and settings in Raymarine system buss.

# INTERIOR

---

- Gloss varnished interior with raised panels
- Compass rose inlay at navigation table and dining table
- Herreshoff-style ceiling
- (2) Prism skylights (master cabin, day head)
- Cedar-lined closets with lighting
- Entertainment system - TV, DVD and stereo
- Lighted liquor and glass cabinets
- New brass barometer, tide clock, thermometer/humidity instruments
- Monogrammed DARK STAR towels
- V-berth conversion panels
- Spare upholstery
- Crew covers for cushions, custom sheets
- Interior floor covering
- Oriental rug runner

---

## **ELECTRICAL SYSTEM**

---

- Northern Lights 8 kW diesel generator
- 12 VDC, with (3) 8D house batteries (2014)
- Xantrex MS 2000 inverter/charger/management system
- All lights LED (interior, exterior, navigation)
- 110 V / 125 VAC 50 amp shore power
- 50 Amp electric cord with splitter

---

## **ELECTRONICS and NAVIGATION EQUIPMENT**

---

- Raymarine E-120 and E-80 chart plotters with ST 60 instruments with chips
- Captain's Raymarine monitor
- Simrad Robertson AP-3000 autopilot (interfaced)
- Raymarine VHF
- ICOM IC-M800 SSB
- KVH Sat phone
- Handheld, rechargeable vacuum, VHF, GPS

---

## **SAILS, RIGGING and CANVAS**

---

- Complete rig refit and paint (2014)
- Hood electric Stowaway system for main; Stowaway mizzen
- Schaeffer headsail furling system
- Sails - UK Tape Drive (2006), new genoa (2015), storm jib, storm trysail, MPS in tube, mizzen staysail, drifter, spare battens
- Winches – (8) Barient plus (2) Electric Type 28 with spares
- Quicksilver isolator
- Winch handles
- Custom emergency tiller
- Canvas dodger and bimini (new 2013)
- Covers for all bright work and winches

---

## **ENGINE and MECHANICAL EQUIPMENT**

---

- Yanmar 88 hp turbo
- Marine reverse-cycle AC
- Grunert holdover system, fridge and freezer, 110V / 125 VAC and engine drive
- Auto fire suppression system
- Engine room camera
- New Yanmar gauges



- Raycor secondary filter engine and genset
- Auto oil changing system - engine and genset
- Spares kits for Northern Lights and Yanmar
- Custom tool storage cabinet with complete set of tools
- (2) Fire extinguishers, jumper cables, extension cords, spot light
- Owner's manuals and maintenance records

## PLUMBING

---

- All thru-hulls rebuilt (2013)
- New electric fresh/saltwater and manual heads (2014)
- New diverter valves and plumbing (2014)
- New bilge pumps and alarms (2013)
- Bilge pump monitor
- Holding tank tender
- Cockpit hot/cold hand-held shower

Tanks (all tanks cleaned in 2013):

- Fuel: 200 gallons in 2 tanks
- Water: 200 gallons in 2 tanks
- Holding: 15 gallons

## HULL and DECK EQUIPMENT

---

- Varnished teak helm, helm seat with cushion
- Folding cockpit table with drink holders, cover
- Cockpit cushions
- Custom cockpit locker storage bags
- Custom helm step, teak cockpit sole grates
- Lazarette cooler
- Varnished screens for companionway, butterfly hatch, forward hatch
- Varnished boarding/swim ladder with custom padded bag
- Custom flagstaff and ensign
- 22 kg CQR stainless steel anchor
- Danforth spare anchor
- (2) Anchor chain sets, 3/4" braid anchor line (spare)
- Dock lines, fenders, varnished fender boards and boat hook
- Lifesling
- Horseshoe life ring
- Water hose

Her centerboard configuration offers a minimum draft of 5'-6" with board up and a maximum draft

of 11'-4" with board down.

---

## ADDITIONAL INFO

---

- New cutlass bearing (2013)
- New Vetus muffler (2013)
- New S/S exhaust/genset (2013)

---

## EXCLUSIONS

---

The owner's personal effects are excluded from the sale.

---

## Исключения

---

При продаже яхты исключаются личные вещи владельца.

---

## Отказ от ответственности

---

Компания предоставляет описание судна или яхты добросовестно, но не может гарантировать точность этой информации, а также не ручается за техническое состояние. Покупатель должен проинструктировать своих агентов или оценщиков исследовать представленную информацию более подробно, по собственному желанию. Продажа судна или яхты, изменение цены или снятие с продажи будет происходить без предварительного уведомления.

# ФОТОГРАФИИ

**Main Salon Looking Forward**



**Port Settee**



**Port Settee with Pilot Berth Outboard**



**Stbd. Settee, Locker Detail**



**Forward Stateroom**



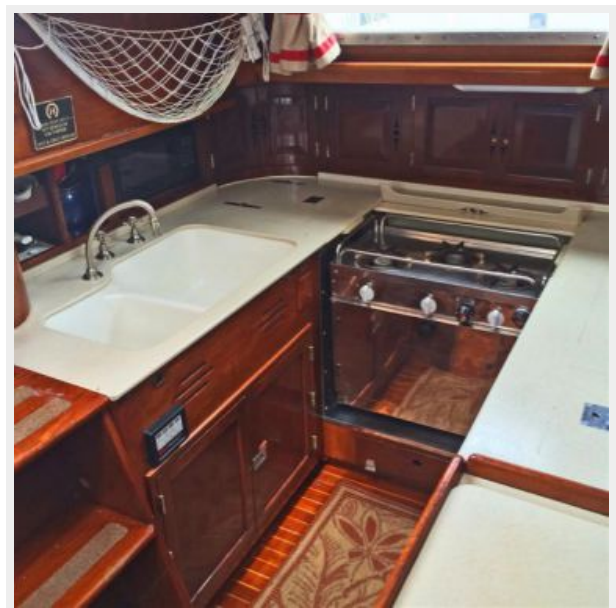
**Stateroom Storage**



**Nav Station**



**Galley**





### Companionway Stairs



### Head



### Wide Walk-around Decks



### Cockpit



**Engine**



**Sailing**



**At Anchor**



**Aerial View**



**Bow**



**Integral Rudder**



# КОНТАКТЫ

---

Андрей Шестаков (Andrey Shestakov) – ведущий яхтенный брокер отдела продаж яхт и судов компании Shestakov Yacht Sales Inc. Официальный представитель Shestakov Yacht Sales Inc. для русскоговорящих клиентов в центральном офисе компании в Майами/Форт Лодердейл/Флорида/США.

## Контактная информация

---

Email: [andrey@shestakovyachtsales.com](mailto:andrey@shestakovyachtsales.com)

Web: [shestakovyachtsales.com](http://shestakovyachtsales.com)

## Телефоны

---

Краснодарский край: **+7(918)465-66-44**

США, Майами, Флорида: **+1(954)274-4435**

## Время работы

---

Понедельник – Суббота: **9:00 - 21:00**  
EDT

Воскресенье: **Закрито**

## Адрес

---



Harbour Towne Marina, 850 NE 3rd St,  
STE 213, Dania, FL 33004