

DREAM CATCHER — BARBERIS YACHTS



Судостроитель: BARBERIS YACHTS

Год постройки: 1983

Модель: Cruising/Racing Sailboat

Цена: ЦЕНА ЯХТЫ ПО ЗАПРОСУ

Местонахождение: United States

Длина общая: 34' 0" (10.36m)

Ширина: 11' 2" (3.40m)

Макс. осадка: 6' 0" (1.83m)

Купить **Dream Catcher — BARBERIS YACHTS** а также выбрать подходящую вам яхту из нашего каталога яхт вам поможет опытный яхтенный брокер Андрей Шестаков. На сегодняшний день компания **Shestakov Yacht Sales Inc.** имеет большое количество яхт в собственном списке продаж, а также тесно сотрудничает со всеми крупными яхтенными производителями по всему миру.

Для того чтобы купить яхту **Dream Catcher — BARBERIS YACHTS** а также проконсультироваться по любому вопросу связанному с покупкой, продажей, чартером яхт позвоните по телефону **+7(918)465-66-44**.

ОГЛАВЛЕНИЕ

ОГЛАВЛЕНИЕ	2
ХАРАКТЕРИСТИКИ	3
Обзор	3
Основная информация	5
Размеры	5
Скорость, вместимость и масса	5
Размещение	5
Корпус и палуба	5
Информация о двигателе	6
ФОТОГРАФИИ	7
КОНТАКТЫ	11
Контактная информация	11
Телефоны	11
Время работы	11
Адрес	11

ХАРАКТЕРИСТИКИ

Обзор

The Show 34 is a product of Barberis Cantieri S.p.A, noted for fast cruising yachts, finished in the impeccable tradition of Italian craftsmanship. It was designed by Douglas Peterson to be the most luxuriously comfortable 34-foot performance sailing yacht you can find. Though not as well known in the US, they remain popular in Europe. They are faster than a similar vintage Sabre 34 and Tartan 34 but with the comfortable interior of a fine cruising yacht. On deck, she's all business, but go below and the quality of craftsmanship is evident in her rich hand-rubbed teak cabinetry, teak & holly sole, and clever use of every available space.

Dream Catcher is well equipped and outfitted for cruising. She has an updated Yanmar 3GM-30 diesel, a new 2-blade SS Slipstream folding prop, a SSB/HAM radio, 2010 Garmin chartplotter, 2011 dodger, 2012 interior cushions, Dickerson cabin heater and much, much more. If you're in the market for a quality performance cruiser, or a cruise-friendly club racer, you owe it to yourself to come see **Dream Catcher**. ACCOMMODATIONS:

The Show 34 has berths for 6 in a finely crafted varnished teak interior. Interior cushions replaced in 2012, teak & holly sole in good condition. There are six large plexiglass cabin ports, smoked plexiglass opening hatches in main and forecabin, and an opening port in the head, letting in plenty of light and air. There is a 16000 BTU Dickerson Diesel Heater installed on the starboard forward bulkhead. **New headliner installed 2014.**

There is a double V-berth forward with storage shelves overhead and drawers below. Aft to port is a large hanging locker, across to starboard is the head. The head features a finely-crafted one-piece plastic moulding which makes the head feel bright and clean, complete with wash basin, mirrored cabinet, marine head and shower, plus plenty of room to turn around in. There is a new holding tank installed.

The Main Cabin features a U-shaped dinette to starboard seats 6/7 for dinner, and also converts to a large double berth. On the port side across from the dinette is a comfortable settee/single berth, with deep enclosed teak lockers behind. The varnished teak dining table has a built-in wine locker and utility storage. Aft to port is a large galley with sink, propane 3 burner cooking stove and oven on gimbals, ice chest, closets and lockers behind louvered doors, a wine locker, three drawers and fitted enclosures for china, glasses and cutlery.

The navigation area contains a large chart table with shelves and panel space for electronic navigation and communication equipment. Aft of the Nav Station is a single quarter berth with wet suit locker, drawers and enclosed shelves for storage.

Galley

- 12 volt AC/DC refrigeration, Norcold cold plate
- 3 burner propane stove with oven
- Pressure

hot and cold water • Water Capacity in 2 tanks 58 gallons total • 6 gallon hot water tank (**new 2014**) • Whale seawater foot pump in galley

Electrical Equipment

• 30amp shore power • 400watt inverter • 20 amp battery charger • Southwest Air Marine wind generator • 3 deep cycle house bank batteries (can be switched to operate as two) • Flat Screen TV installed **2014**

Engines

Yanmar 3GM-30 27hp @ 2600rpm repowered in 1999 excellent running order 1500 hours
Heavy duty Racor filter New 2-blade SS Slipstream folding & 3 blade fixed propeller Stainless steel 15 gallon diesel tank New shaft line replacement in 2011 1" shaft Dripless seal
PYI cutlass bearing

Electronics & Navigation

• 2010 Garmin chartplotter • Garmin handheld GPS • Standard Horizon VHF • Navico Autopilot • Datamarine depthsounder • Datamarine wind&speed • Datamarine knot/log • Kenwood SSB/HAM radio • ACR 406 EPIRB • Furuno radar • Stereo/CD/ player with salon speakers

Deck & Hull

• Simpson & Lawrence manual windlass with chain and nylon rode • 35 lb. claw anchor with 50' 3/8" chain and 250' of rope rode • 25 lb. CQR anchor with 50' 3/8" chain and 250' of rope rode • Fortress Guardian • 5 Halyards • 2002 Caribe L-9 Inflatable • Tohatsu 8hp 2cycle outboard • 2011 dodger • Custom Bimini • Givens 4 person life raft (needs inspection) • Jack lines

Sails & Rigging

• Sloop Rig • Furler roller furling system on headstay • Main sail (fair) • 140% genoa, roller furling (Good) • 100% jib (Excellent) • 90% Storm jib (Excellent) • Spinnaker (Excellent) • 2 genoa sheet winches • 3 cockpit winches for halyards • 1 mast winch • 2 Spinnaker Poles • 5 halyards

Основная информация

Тип судна: Cruising/Racing Sailboat

Подкатегория: Крейсерская яхта

Модельный год: 1983

Год постройки: 1983

Страна: United States

Размеры

Длина общая: 34' 0" (10.36m)

Длина по ватерлинии: 27' 2" (8.28m)

Ширина: 11' 2" (3.40m)

Макс. осадка: 6' 0" (1.83m)

Скорость, вместимость и масса

Водоизмещение: 10780 Pounds

Объем топливного бака: 15 Gallons

Размещение

Всего кают: 2

Спальные места: 6

Всего ком. состава: 1

Корпус и палуба

Материал корпуса: Fiberglass

Комплектация корпуса: Deep Fin

Цвет корпуса: white

Дизайнер корпуса: Doug Peterson

Информация о двигателе

Двигатели: 1

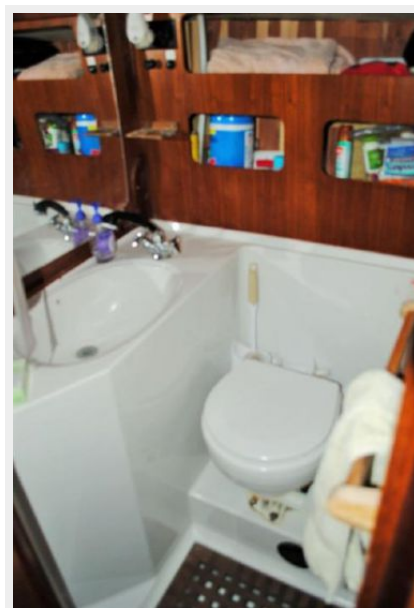
Производитель: Yanmar

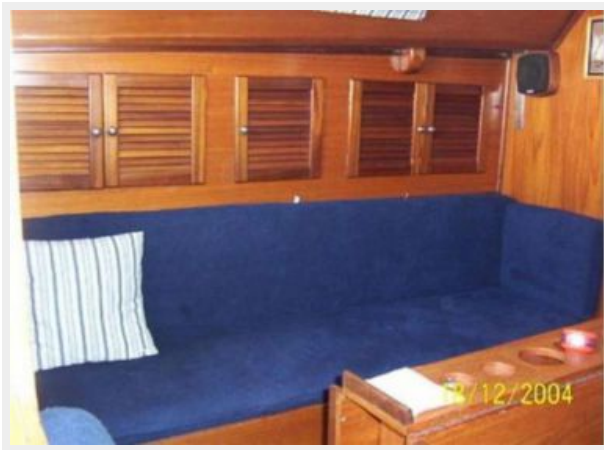
Модель: 3GM30F

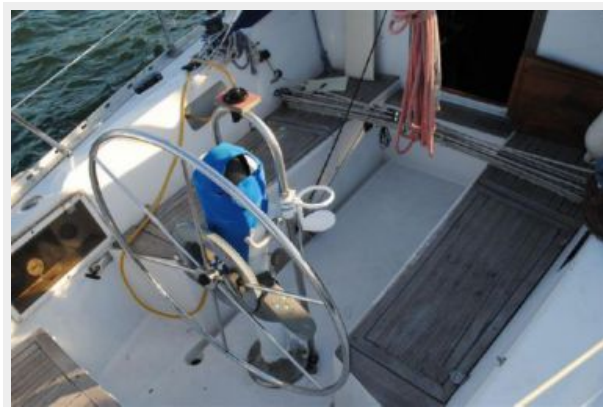
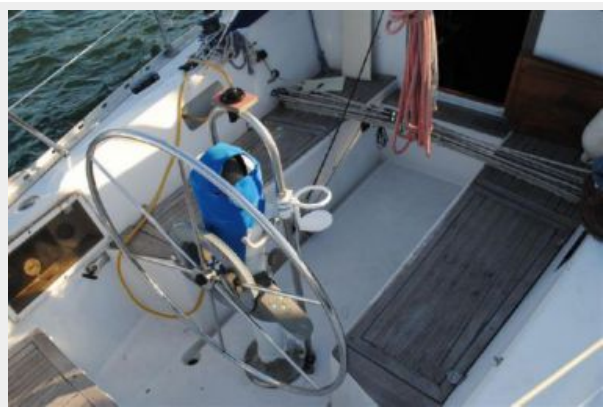
Тип двигателя: Inboard

Тип топлива: Diesel

ФОТОГРАФИИ









КОНТАКТЫ

Андрей Шестаков (Andrey Shestakov) – ведущий яхтенный брокер отдела продаж яхт и судов компании Shestakov Yacht Sales Inc. Официальный представитель Shestakov Yacht Sales Inc. для русскоговорящих клиентов в центральном офисе компании в Майами/Форт Лодердейл/Флорида/США.

Контактная информация

Email: andrey@shestakovyachtsales.com

Web: shestakovyachtsales.com

Телефоны

Краснодарский край: **+7(918)465-66-44**

США, Майами, Флорида: **+1(954)274-4435**

Время работы

Понедельник – Суббота: **9:00 - 21:00**
EDT

Воскресенье: **Закрито**

Адрес



Harbour Towne Marina, 850 NE 3rd St,
STE 213, Dania, FL 33004