

KARAN — CABO



Builder: CABO

Year Built: 2006

Model: Sport Fisherman

Price: PRICE ON APPLICATION

Location: Puerto Rico

LOA: 43' 0" (13.11m)

Beam: 15' 1" (4.60m)

Max Draft: 3' 0" (0.91m)

Our experienced yacht broker, Andrey Shestakov, will help you choose and buy a yacht that best suits your needs **KARAN — CABO** from our catalogue. Presently, at Shestakov Yacht Sales Inc., we have a wide variety of yachts available on our sale's list. We also work in close contact with all the big yacht manufacturers from all over the world.

If you would like to buy a yacht **KARAN — CABO** or would like help answering any questions concerning purchasing, selling or chartering a yacht, please call **+1(954)274-4435**

TABLE OF CONTENTS

TABLE OF CONTENTS	2
SPECIFICATIONS	5
Basic Information	5
Dimensions	5
Speed, Capacities and Weight	5
Accommodations	5
Hull and Deck Information	5
Engine Information	6
DETAILED INFORMATION	7
ACCOMMODATIONS	7
MECHANICAL & ENGINE ROOM	7
Exclusions	8
Disclaimer	8
PHOTOS	9
43' Cabo Convertible 2006	9
43' Cabo Convertible 2006	9
43' Cabo Convertible 2006	9
43' Cabo Convertible 2006	9
Stern	10
Stern	10
Stern	10
Main Salon Forward	10
Main Salon Forward	10
Main Salon Aft	10
Main Salon Aft	11
Dinette	11
Dinette	11
Galley	11

Galley	11
Galley	11
Stairway to Cabins	12
GE Turntable Microwave Oven	12
Master Cabin	12
Master Cabin	12
Master Head	12
Guest Bunk Cabin	12
Guest Bunk Cabin	13
Guest Head	13
Cockpit	13
Cockpit	13
Fighting Chair	13
Fighting Chair	14
Live Bait Well	14
Cockpit	14
Entrance to Salon	14
Flybridge Helm	14
Flybridge Helm	14
Flybridge Helm	15
Flybridge Helm Electronics	15
Electronic Reels for Outriggers	15
Clarion Stereo System	15
ICOM VHF Marine IC M604	15
Furuno RD-30 Depth Sensor	15
Furuno Color LCD Sounder	16
SIMARD AP26 Autopilot	16
Furuno NavNet	16
Garmin GPS	16

Flybridge Seating	16
Foredeck	16
Engine Room	17
Ladder to/from Cockpit	17
Twin MAN 900	17
Twin MAN 900	17
Cruisair	18
Engine Room	18
Engine Room	18
Engine Room	18
43' Cabo Convertible 2006	19
43' Cabo Convertible 2006	19
CONTACTS	20
Contact details	20
Telephones	20
Office hours	20
Address	20

SPECIFICATIONS

Basic Information

Category: Sport Fisherman

Sub Category: Convertible

Model Year: 2006

Year Built: 2006

Country: Puerto Rico

Fly Bridge: Yes

Cockpit: Yes

Dimensions

LOA: 43' 0" (13.11m)

Beam: 15' 1" (4.60m)

Max Draft: 3' 0" (0.91m)

Speed, Capacities and Weight

Displacement: 33500 Pounds

Water Capacity: 100 Gallons

Fuel Capacity: 700 Gallons

Accommodations

Total Cabins: 2

Total Berths: 4

Sleeps: 6

Total Heads: 2

Hull and Deck Information

Hull Material: Fiberglass

Engine Information

Engines: 2

Manufacturer: MAN

Model: V-8 900 CR

Engine Type: I/O

Fuel Type: Diesel

DETAILED INFORMATION

ACCOMMODATIONS

The V-berth has two upper bunks, one large lower bunk, rod storage on port and starboard sides, cedar lined closet on port side, two teak storage drawers and over head hatch. Aft & port is guest head with shower, directly across is master stateroom with private head and shower with corian vanity tops and mirrored medicine cabinet with cabinetry below. Master stateroom has a queen bed with storage below, bed side tables and reading lamps. Under steps leading to galley is a combination washer & dryer. Directly aft of galley is salon with L-shaped sofa on port side and L-shaped settee with table on starboard side. Recessed lighting throughout entire interior. Teak and Holly flooring through out salon and galley with carpet runners and carpet in companionway and staterooms. **Salon/Galley is equipped with:**

- Sharp TV
- GE turntable microwave oven
- Sub Zero 700BR refrigerator (2 drawers)
- Sub Zero freezer
- Kenyon 2-burner stovetop

Master Cabin:

- Queen berth
- Zenith TV
- Full bath with separate shower

Day Head:

- Toilet
- Sink
- Shower

Guest Bunk Cabin:

- Sleeps 3 with over/under
- 2 Single top bunks
- 1 Double lower bunk

Separate CruisAir A/C in each cabin and salon.

MECHANICAL & ENGINE ROOM

Engines: Twin MAN 900, 1552 original hours each **Generator:** Westerbeke 15kW Rebuilt February 2014 Only 700 hours since rebuild Total of 3700 hours Serviced every 100 hours with

filter & oil change **Water maker**

Exclusions

Owner's personal belongings.

Disclaimer

The Company offers the details of this vessel or yacht in good faith but cannot guarantee or warrant the accuracy of this information nor warrant the condition of the vessel. A buyer should instruct his representatives, agents, or his surveyors, to investigate such details as the buyer desires validated. This vessel or yacht is offered subject to prior sale, price change, or withdrawal without notice.

PHOTOS

43' Cabo Convertible 2006



43' Cabo Convertible 2006



43' Cabo Convertible 2006



43' Cabo Convertible 2006



Stern



Stern



Stern



Main Salon Forward



Main Salon Forward



Main Salon Aft



Main Salon Aft



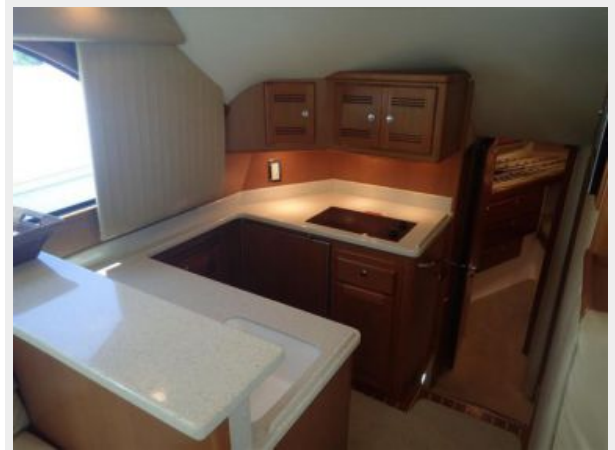
Dinette



Dinette



Galley



Galley



Galley



GE Turntable Microwave Oven



Stairway to Cabins



Master Cabin



Master Cabin



Master Head



Guest Bunk Cabin



Guest Bunk Cabin



Guest Head



Cockpit



Cockpit



Fighting Chair



Fighting Chair



Live Bait Well



Cockpit



Entrance to Salon



Flybridge Helm



Flybridge Helm



Flybridge Helm



Flybridge Helm Electronics



Electronic Reels for Outriggers



Clarion Stereo System



ICOM VHF Marine IC M604



Furuno RD-30 Depth Sensor



Furuno Color LCD Sounder



SIMRAD AP26 Autopilot



Furuno NavNet



Garmin GPS



Flybridge Seating



Foredeck



Engine Room

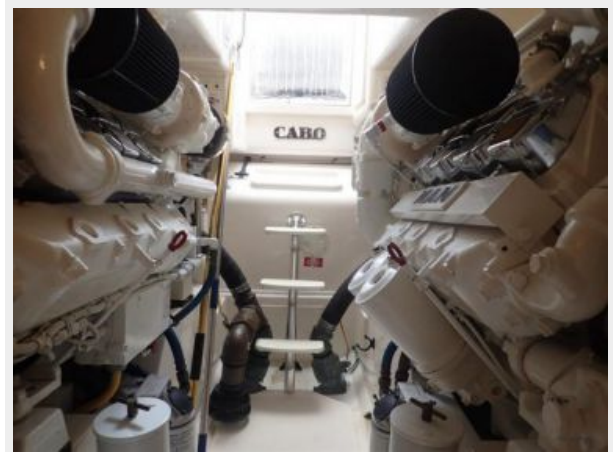
Ladder to/from Cockpit



Twin MAN 900



Twin MAN 900



Cruisair



Engine Room



Engine Room



Engine Room



43' Cabo Convertible 2006



43' Cabo Convertible 2006



CONTACTS

Andrey Shestakov, leading yacht broker of the sales department of Shestakov Yacht Sales Inc. Shestakov Yacht Sales Inc., the official representative of the Miami/Fort Lauderdale FL headquarters.

Contact details

Email: andrey@shestakovyachtsales.com

Web: shestakovyachtsales.com/en/

Telephones

USA: +1(954)274-4435

Office hours

Monday – Saturday: **9:00 - 21:00** EDT

Sunday: **closed**

Address



Harbour Towne Marina, 850 NE 3rd St,
STE 213, Dania, FL 33004