

## GYPSEA QUEEN — BERTRAM



**Builder:** BERTRAM

**Year Built:** 2005

**Model:** Sport Fisherman

**Price:** PRICE ON APPLICATION

**Location:** United States

**LOA:** 39' 0" (11.89m)

**Beam:** 13' 4" (4.06m)

**Min Draft:** 3' 11" (1.19m)

**Max Draft:** 4' 1" (1.24m)

**Cruise Speed:** 24 Kts. (28 MPH)

**Max Speed:** 30 Kts. (35 MPH)

Our experienced yacht broker, Andrey Shestakov, will help you choose and buy a yacht that best suits your needs **GYPSEA QUEEN — BERTRAM** from our catalogue. Presently, at Shestakov Yacht Sales Inc., we have a wide variety of yachts available on our sale's list. We also work in close contact with all the big yacht manufacturers from all over the world.

If you would like to buy a yacht **GYPSEA QUEEN — BERTRAM** or would like help answering any questions concerning purchasing, selling or chartering a yacht, please call **+1(954)274-4435**

# TABLE OF CONTENTS

TABLE OF CONTENTS	2
SPECIFICATIONS	6
Basic Information	6
Dimensions	6
Speed, Capacities and Weight	6
Accommodations	6
Hull and Deck Information	7
Engine Information	7
DETAILED INFORMATION	8
Walkthrough	8
Salon	8
Galley	9
Companionway	9
Guest Cabin	9
Head	9
Master Cabin	10
Foredeck	10
Cockpit	10
Flybridge	11
Engine Room	11
Electrical	11
Remarks	12
Exclusions	12
Disclaimer	12
Exclusions	12
Disclaimer	12
PHOTOS	14
Salon Looking Forward	14

Salon to Port	14
Salon Dining Forward	14
Salon Entertainment to Starboard	14
Salon Looking Aft	14
Salon Forward Storage	14
Galley	15
Galley Looking Aft	15
Galley	15
Storage Under Galley	15
Companionway Looking Forward	15
Companionway Looking Aft	15
Guest Cabin Looking Aft	16
Guest Cabin Looking Forward	16
Head	16
Shower	16
Master Berth	16
Master Berth Storage	16
Master to Port	17
Master to Starboard	17
Digital AC	17
Foredeck	17
Foredeck	17
Windlass Detail	17
Pulpit	18
Side Deck	18
Proper Engine Room Vents	18
Transom	18
Stern Shot	18
Cockpit	18

Aft Well	19
Transom Door	19
Starboard Side Locker	19
Lazarette	19
Sink with Freshwater & Salt Taps	19
Engine Room Entrance	19
Freezer	20
Live Well	20
Flybridge Access	20
Bow Through Clear Vinyl	20
Hardtop Equipment	20
Bridge Seating Forward	20
Helm Chair	21
Helm	21
Northstar GPS	21
Garmin GPS Page	21
Garmin Sounder Page	21
Helm	21
370 Hours June 9, 2015	22
A/P	22
Radio	22
Murray Brothers Helm Chairs	22
Under Console	22
Aft Rail Rocket Launcher	22
Engine Room Looking Forward	23
Port Engine	23
Starboard Engine	23
Generator	23
Watermaker	23

---

Engine Room Equipment	23
C Charger	24
AC Units	24
Fireboy	24
Shiny Plumbing	24
Water Pump & 12 Volt Backup	24
Salon Electric Panel	24
Logo	25
CONTACTS	26
Contact details	26
Telephones	26
Office hours	26
Address	26

---

# SPECIFICATIONS

---

## Basic Information

---

**Category:** Sport Fisherman

**Model Year:** 2006

**Year Built:** 2005

**Country:** United States

**Vessel Top:** Half Tower

**Fly Bridge:** Yes

**Cockpit:** Yes

## Dimensions

---

**LOA:** 39' 0" (11.89m)

**Beam:** 13' 4" (4.06m)

**Min Draft:** 3' 11" (1.19m)

**Max Draft:** 4' 1" (1.24m)

## Speed, Capacities and Weight

---

**Cruise Speed:** 24 Kts. (28 MPH)

**Max Speed:** 30 Kts. (35 MPH)

**Displacement:** 36000 Pounds

**Gross Tonnage:** 18 Pounds

**Water Capacity:** 106 Gallons

**Holding Tank:** 37 Gallons

**Fuel Capacity:** 459 Gallons

## Accommodations

---

**Total Cabins:** 2

**Total Berths:** 3

**Sleeps:** 4

**Total Heads:** 1

---

## Hull and Deck Information

---

**Hull Material:** Fiberglass

**Deck Material:** Fiberglass

**Hull Configuration:** Deep Vee

**Hull Designer:** Bertram

**Exterior Designer:** Bertram

---

## Engine Information

---

**Engines:** 2

**Manufacturer:** Caterpillar

**Model:** C-7

**Engine Type:** Inboard

**Fuel Type:** Diesel

---

## DETAILED INFORMATION

---

### Walkthrough

---

Entrance to "GYPSEA QUEEN" is into the Cockpit via the port or starboard gunwales and steps from a dock or via the swim platform and transom door from a floating dock. The spacious Cockpit has everything a serious angler desires to tournament fish. A big bonus is the Cockpit access to the Engine Room, rare for a Sport Fish of this size.

The Salon is two steps up and is laid out with two L shaped settees opposing each other in the forward and aft corners with the forward one including a table for dining.

The Galley is two steps down to port. Down two more steps is the Head with stall shower to port and twin lower berth Cabin to starboard.

All the way forward is an island queen berth in the Master Cabin.

The Flybridge is accessed via a ladder in the Cockpit and has a helm and companion seat plus a bench seat for four people forward, all covered with a fiberglass hardtop and clear vinyl enclosure.

### Salon

---

The Salon is entered via a hinged door two steps up from the Cockpit. Immediately to port is an L shaped settee with an eggshell Ultra Leather seating surface. The entire area under the sofa is available for storage via hinged seat bottom. Behind the sofa aft and port is a large window covered with eggshell painted wood mini blinds.

To starboard immediately upon entering is an L shaped cabinet with two doors and a storage drawer. Within the cabinet is a Bose Lifestyle AM/FM/CD/DVD hard drive storage music system with iPod dock. Next forward behind two cabinet doors is the main electrical panel.

Above is a corner cabinet with Sharp Aquos 15" LCD TV. Next forward in the overhead is a hinged storage locker for four rods and reels.

Below is an L shaped dining settee upholstered to match the aft settee with storage below. A fixed high gloss cherry table on a cherry base sits in front of the settee. Outboard to wood mini blinds over the cabin side windows.

Forward are four cabinet doors for general storage.

Also in the Salon is a carpeted sole, a five channel Bose stereo speaker system with a hidden subwoofer, teak centerline handrails overhead, ten halogen mini spots and an attractive cherry



frame around the mini blinds.

---

## Galley

---

Forward to port and two steps down is the compact but complete Galley. Features include:

Teak & holly sole Princess two burner Ceran top Cockpit Norcold under counter refrigerator/freezer w/wood front Built in GE turntable microwave oven Corian countertop w/built in sea rails Seamless Corian sink (7) Cherry cabinet doors (2) Cherry storage doors (2) Under counter lights Access & storage under Galley sole

---

## Companionway

---

Down two more steps is the Accommodations with the Head to port, Guest Cabin to starboard and Master Cabin forward.

---

## Guest Cabin

---

Entering from the forward end there are twin berths running fore and aft with storage below. Between is a small nightstand with a single drawer below.

Each berth has a reading light. Above the outboard berth is a cherry single shelf.

At the foot of the outboard berth is a cherry hanging locker with an auto light and a shelf above.

Also in the cabin are two stereo speakers, three overhead mini spots, a carpeted sole and a G Vox AM/FM/CD/DVD stereo.

---

## Head

---

The Portside Head has two cherry entry doors, one from the Master, one from the centerline Companionway. The sole is fiberglass.

The vanity has two cherry doors below and a Corian countertop and seamless sink above. There are three mirrored medicine cabinets for storage above.

The electric toilet is a Raritan Crown model. The stall shower has a plexi bi fold door, a plexi side light, a seat, a shelf, a light and a handheld or wall mountable shower fixture.

The overhead is mirrored with two lights. There is also a small Bomar hatch with an Ocean Air sliding screen and shade, an exhaust fan and an AC vent.

---

## Master Cabin

---

Looking forward from the entrance, there is an island centerline berth, rope lights around the perimeter and two storage drawers below. Two directional reading lights are at the headboard. A carpeted step gives easier access to either side of the berth. To both port and starboard are three hinged storage lockers on gas shocks just below the headliner.

Above the berth is a Bomar deck hatch with an Ocean Air sliding screen and shade.

Aft to starboard is a two door hanging locker with auto light.

Aft to port is a storage cabinet under a 12" Sharp Aquos built in LCD TV.

Also in this area is a VR3 AM/FM/CD/DVD stereo with a SD card reader with a USB and iPod connection.

Also in this cabin are two stereo speakers, a digital AC controller and built in V Mar clock.

---

## Foredeck

---

Fiberglass nonskid decks Fiberglass bow pulpit Stainless steel anchor roller 33 Lb. Lewmar claw anchor w/150' chain & 100' rode Lewmar rope/chain windlass Chain stopper Lewmar up/down windlass foot switches Anchor locker hatch on Foredeck & Master Cabin Welded aluminum bow rails (4) Spring line cleats Bow pennant staff Givens 6 person canister life raft w/hydrostatic release (2) Bomar Foredeck hatches, one large, one small Dual trumpet horns White powder coated handrails above cabin side windows

---

## Cockpit

---

Fiberglass nonskid sole Built in port & starboard fiberglass side deck steps (4) Flush mount rod holders Rupp 32' double spreader outriggers Walk through transom door & gate Transom catch well w/twin hinged opening top Fiberglass swim platform w/popup tender cleats Hot & cold transom shower Hidden gaff storage to port Folding full Cockpit Bimini top Under gunwale aft cleats w/aft facing hawse pipes Padded Cockpit coaming bolsters Waist high live well cabinet to starboard Stainless steel freezer to port w/hinged top Fresh & salt tap sink to port under hinged top 7 Step aluminum & acrylic tread ladder to Flybridge Portside cabinet w/freshwater wash down, dockside water connection, 50 amp cable master, cable TV inlet & fuel fill monitor controls Port & starboard deck hatches into bilge area Center hatch to large removable catch well w/macerator removable for rudder access (2) JL Audio stereo speakers in overhang (2) Overhead lights in overhang Powder coated handrails port & starboard at side deck (2) Underwater lights

Hinged glass door access to Salon Hinged two piece door Engine Room access from Cockpit

## Flybridge

Fiberglass nonskid decks Pipewelders custom molded fiberglass hardtop Nav lights in corners of molded top 3 Side clear vinyl enclosure w/(3) U Zips L shaped seating forward of Helm Aluminum handrail forward of seating (2) LED white lights in hardtop (1) LED red light in hardtop over helm Welded aft rail w/5 place rocket launcher (2) Murray Brothers Sea 17 white painted ladder back helm chairs w/removable cushions (seat bottom cushions new 2015) Helm chair covers (2) JL Audio stereo speakers Centerline helm w/wheel steering Microcommander electronic engine controls w/synchronizer Simrad AP 26 autopilot Side Power bow thruster Northstar 6000i 10" plotter/radar/fish finder (2) CAT LCD engine monitors Furuno RD 30 depth/speed display Garmin 3010 color plotter/GPS Analog fuel tank gauge (3) Bilge pump switches Start/stop/parallel switches Danforth 4" magnetic compass Fireboy auto engine shut down override control Graphic display for bilge pumps, high water alarms, riser alarms & generator on indicator Clarion CMD5 AM/FM/CD stereo West Marine VHF 585 VHF w/DSC (new 2015) Remote VHF speaker McMurdo EPIRB Trim tab controls All electronics under hinged plexi panels as spray shields 12 Volt accessory outlet GFCI outlet under helm 12V & 24V breaker panels under helm DC light under helm storage area Power coated handrails port & starboard of helm Aluminum footrest at helm 6K open array radar scanner (2) Molded quartz lights facing aft Folding aluminum signal mast on hardtop Sat TV system Proper Engine Room hull side air vents intake

## Engine Room

Head Hunter Mach 5 house water pump X Caliber 12 volt house water pump (backup) Seaward 11 gallon stainless steel hot water heater Fiberglass generator muffler Centex fiberglass exhaust system & mufflers Oil X Changer oil change system Watermakers, Inc. watermaker 400 GPD Freshwater spigot & coil hose in Engine Room Cruiseair 12,000 BTU air con compressor for Cabins Cruiseair 16,000 BTU air con compressor for Salon 110 Volt wash down pump (3) LED Engine Room lights Site gauge on fuel tanks (2) Racor 900 fuel filters Dripless shaft seats w/spare seals Folding 3 step entry ladder Fireboy Halon system Spin on generator secondary fuel filter (2) Engine coolant expansion bottles All new sewage hoses (2014)

## Electrical

12/24V DC electrical system 110/220V AC electrical system 50 Amp Glendinning 220V shore cord reel 10 KW Kohler generator in sound box w/771 hours 24 Volt panel on Flybridge w/(16) breaker protected circuits 12 Volt panel on Flybridge w/(12) breaker protected circuits

Main Salon electric panel w/the following features: 24 Volt panel w/analog volt & amp meters (24) Breaker protected 24 volt circuits Battery test switch 120/240 Volt panel w/analog volt & amp

meters Generator start/stop switches Generator/shore selector breakers (12) Breaker protected 120 volt circuits (10) Breaker protected 240 volt circuits Freshwater gauge Battery parallel switch Holding tank monitor High water alarm audio/visual panel

Engine Room 24 volt main supply panel w/(13) breaker protected circuits (2) Guest battery switches (2) Perko battery switches (4) 8D House/start batteries Vanner 60 amp battery equalizer 12 Volt generator battery Group 31 Quick Silver galvanic isolator 60 Amp 500 Series Charles 24 volt charger

---

## Remarks

---

Always a popular model, the 390 Bertram is an updated version of the 37' Bertram but with the new Bertram profile, high gloss cherry joinery and more modern 4 stroke CAT engines.

This low hour version has an awlgripped Engine Room, bow thruster, watermaker, Pipewelders hardtop and the layout of a larger Sportfisherman.

Ready to fish or cruise, GYPSEA QUEEN deserves your close inspection. She will not disappoint!

Note: Actual LOA 41'8". Dead rise 18 degrees.

---

## Exclusions

---

While every effort was made to list all pertinent included equipment aboard GYPSEA QUEEN, there are some personal belongings aboard. Prospective purchasers should assume any item not specifically mentioned herein will not convey at closing.

---

## Disclaimer

---

The Company offers the details of this vessel in good faith but cannot guarantee or warrant the accuracy of this information nor warrant the condition of the vessel. A buyer should instruct his agents, or his surveyors, to investigate such details as the buyer desires validated. This vessel is offered subject to prior sale, price change, or withdrawal without notice.

---

## Exclusions

---

Owner's personal belongings.

---

## Disclaimer

---

The Company offers the details of this vessel or yacht in good faith but cannot guarantee or warrant the accuracy of this information nor warrant the condition of the vessel. A buyer should instruct his representatives, agents, or his surveyors, to investigate such details as the buyer desires validated. This vessel or yacht is offered subject to prior sale, price change, or withdrawal without notice.

# PHOTOS

**Salon Looking Forward**



**Salon to Port**



**Salon Dining Forward**



**Salon Entertainment to Starboard**



**Salon Looking Aft**



**Salon Forward Storage**



**Galley**



**Galley Looking Aft**



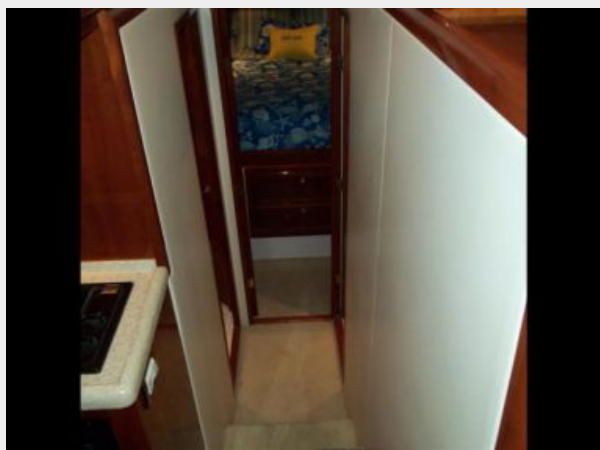
**Galley**



**Storage Under Galley**



**Companionway Looking Forward**



**Companionway Looking Aft**





**Guest Cabin Looking Aft**



**Guest Cabin Looking Forward**



**Head**



**Shower**



**Master Berth**



**Master Berth Storage**





**Master to Port**



**Master to Starboard**



**Digital AC**



**Foredeck**



**Foredeck**



**Windlass Detail**



**Pulpit**



**Side Deck**



**Proper Engine Room Vents**



**Transom**



**Stern Shot**



**Cockpit**



**Aft Well**



**Transom Door**



**Starboard Side Locker**



**Lazarette**



**Sink with Freshwater & Salt Taps**



**Engine Room Entrance**





**Freezer**



**Live Well**



**Flybridge Access**



**Bow Through Clear Vinyl**



**Hardtop Equipment**



**Bridge Seating Forward**



**Helm Chair**



**Helm**



**Northstar GPS**



**Garmin GPS Page**



**Garmin Sounder Page**



**Helm**



370 Hours June 9, 2015



A/P



Radio



Murray Brothers Helm Chairs



Under Console



Aft Rail Rocket Launcher





**Engine Room Looking Forward**



**Port Engine**



**Starboard Engine**



**Generator**



**Watermaker**



**Engine Room Equipment**



**C Charger**



**AC Units**



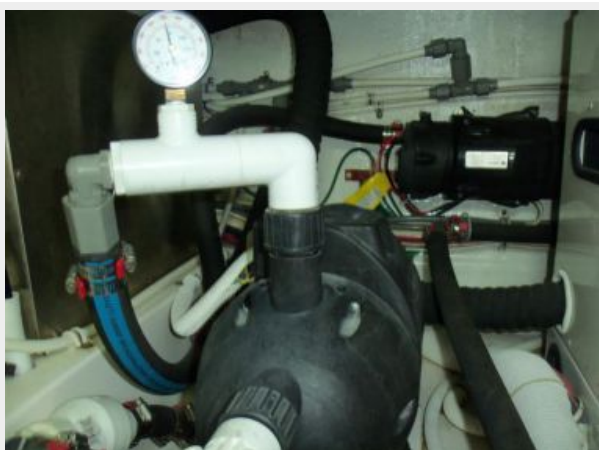
**Fireboy**



**Shiny Plumbing**



**Water Pump & 12 Volt Backup**



**Salon Electric Panel**





## Logo



# CONTACTS

---

Andrey Shestakov, leading yacht broker of the sales department of Shestakov Yacht Sales Inc. Shestakov Yacht Sales Inc., the official representative of the Miami/Fort Lauderdale FL headquarters.

## Contact details

---

Email: [andrey@shestakovyachtsales.com](mailto:andrey@shestakovyachtsales.com)

Web: [shestakovyachtsales.com/en/](http://shestakovyachtsales.com/en/)

## Telephones

---

USA: +1(954)274-4435

## Office hours

---

Monday – Saturday: **9:00 - 21:00** EDT

Sunday: **closed**

## Address

---



Harbour Towne Marina, 850 NE 3rd St,  
STE 213, Dania, FL 33004