

MADSUMMER — FEADSHIP



Builder: FEADSHIP

Year Built: 2005

Model: Mega Yacht

Price: PRICE ON APPLICATION

Location: United States

LOA: 182' 0" (55.47m)

Beam: 32' 10" (10.01m)

Min Draft: 10' 4" (3.15m)

Cruise Speed: 14 Kts. (16 MPH)

Max Speed: 16 Kts. (18 MPH)

Our experienced yacht broker, Andrey Shestakov, will help you choose and buy a yacht that best suits your needs **MADSUMMER — FEADSHIP** from our catalogue. Presently, at Shestakov Yacht Sales Inc., we have a wide variety of yachts available on our sale's list. We also work in close contact with all the big yacht manufacturers from all over the world.

If you would like to buy a yacht **MADSUMMER — FEADSHIP** or would like help answering any questions concerning purchasing, selling or chartering a yacht, please call **+1(954)274-4435**

TABLE OF CONTENTS

TABLE OF CONTENTS	2
SPECIFICATIONS	3
Overview	3
Basic Information	4
Dimensions	4
Speed, Capacities and Weight	5
Accommodations	5
Hull and Deck Information	5
Engine Information	5
DETAILED INFORMATION	6
Detailed Information	6
Exclusions	7
Disclaimer	7
PHOTOS	8
CONTACTS	15
Contact details	15
Telephones	15
Office hours	15
Address	15

SPECIFICATIONS

Overview

Winner of the Boat International World Superyacht Award in the Custom Motor Yacht 51 metres to 65 metres category, MADSUMMER confirms her reputation as one of the industry's most sensational yachts.

Motor yacht MADSUMMER has a timeless refined style in her traditional relaxed exterior lines and a functionality and grace in her contemporary yet natural interior. Being a new state of the art motor yacht she wants for nothing and features a comprehensive gathering of electronics and entertainment inside and out.

MADSUMMER's main owner suite is located in a prominent position forward on the main deck from where you can fully enjoy lovely panoramic views. The yacht's two twins and two doubles guest staterooms are spacious and individualized and are located on her lower deck. Cruising comfort is ensured with modern design, size, and features such as zero speed stabilizers which can operate while the yacht is anchored.

MADSUMMER gives fantastic open deck areas, excellent outdoor interaction whether for lounging and sunning, entertaining and dining, soaking in the Jacuzzi or messing about on the water with the large collection of water toys.

ACCOMMODATION

Guests: - Full width master suite with double bed, study, walk in wardrobe, his and hers bathroom and separate toilet en suite - 2 x double cabins each with bathroom en-suite - 1 x double cabin with shower room en suite - 1 x twin cabin with shower room en suite **Crew:** - 2 x double cabin with bathroom en suite - 2 x twin cabins each with bathroom en suite - 2 x twin cabins each with pullman berth and bathroom en suite

WATERSPORTS

- 2 x 21ft Castoldi Jet tenders each with 125hp engine - 1 x 12ft Castoldi Jet tender with 125hp engine - 2 x Yamaha 120hp waverunners - 2 x kayaks - Bauer compressor with Nitrox system - Dive equipment & tanks - Water skis & tows

OTHER EQUIPMENT

- Stabilisers - Jacuzzi on deck, Satellite television, - Air-conditioning - Pod docking station - Satcom - Flat and plasma screen televisions - Fire fighting - DVD's, - Swim Platform - Kaleidoscope DVD server - Awning - LINN CD server and Creston touch screen remotes - Passerelle - Side Boarding Ladders

DECK EQUIPMENT

Swim Platform Hydraulic swim ladder, shower, removable professional fishing chair with equipment **Awning** Bridge deck & sun deck **Passerelle** Ackerboom passerelle operated with wireless remote **Side Boarding Ladders** MarQuipt, both sides, main & bridge

AUXILIARY MACHINERY & ELECTRICAL SYSTEM

Generators 3 x Caterpillar 160kW 1 x Caterpillar 84kW **Electricity** 400 / 230V AC 3-phase 50Hz 230V AC single-phase 50 Hz 24V DC

ANCILLARY EQUIPMENT

Stabilizers 2 x Koopnautic stabilisers **Air-Conditioning** Heinen & Hopman chilled water air-conditioning and fan-coil system with individual local controls throughout

SAFETY AND SECURITY EQUIPMENT

Safety Full MCA complement of approved safety equipment **Fire Fighting** MCA approved Marioff Hi-Fog system throughout Fire/smoke/heat detection system throughout **Security** CCTV system, security lighting and intrusion detection in compliance with International Ship & Port Security Code

COMMUNICATION EQUIPMENT

Satcom 2 x Nera Fleet77, 2 x Nera Mini-M, Broadband 512kb (in areas with coverage), 2 x ISDN 64kb (Fleet 77) **Other Radio equipment** ICS, C4 GMDSS control centre, Satcom-C, DSC VHF, SSB, Navtex, Cisco VOIP telephone exchange with fixed and Wi-Fi wireless phones

Basic Information

Category: Mega Yacht	Model Year: 2005
Year Built: 2005	Refit Year: 2015
Refit Type: Interior	Country: United States
Coast Guard #: George Town	Cockpit: Yes

Dimensions

LOA: 182' 0" (55.47m)	LWL: 161' 0" (49.07m)
Beam: 32' 10" (10.01m)	Min Draft: 10' 4" (3.15m)

Speed, Capacities and Weight

Cruise Speed: 14 Kts. (16 MPH)

Cruise Speed Range: 4500

Max Speed: 16 Kts. (18 MPH)

Displacement: 1873929.227 Pounds

Gross Tonnage: 782 Pounds

Water Capacity: 6446 Gallons

Fuel Capacity: 26364 Gallons

Fuel Consumption: 58 Gallons

Accommodations

Total Cabins: 5

Total Berths: 6

Sleeps: 10

Captain Cabin: True

Crew Cabin: 5

Crew Berths: 6

Crew Sleeps: 6

Crew Heads: 4

Hull and Deck Information

Hull Material: Steel

Deck Material: Teak

Hull Color: White

Hull Designer: De Voogt Naval Architects

Interior Designer: Laura Sessa Design

Engine Information

Engines: 2

Manufacturer: Caterpillar

Fuel Type: Diesel

DETAILED INFORMATION

Detailed Information

Winner of the Boat International World Superyacht Award in the Custom Motor Yacht 51 metres to 65 metres category, MADSUMMER confirms her reputation as one of the industry's most sensational yachts.

Motor yacht MADSUMMER has a timeless refined style in her traditional relaxed exterior lines and a functionality and grace in her contemporary yet natural interior. Being a new state of the art motor yacht she wants for nothing and features a comprehensive gathering of electronics and entertainment inside and out.

MADSUMMER's main owner suite is located in a prominent position forward on the main deck from where you can fully enjoy lovely panoramic views. The yacht's two twins and two doubles guest staterooms are spacious and individualized and are located on her lower deck. Cruising comfort is ensured with modern design, size, and features such as zero speed stabilizers which can operate while the yacht is anchored.

MADSUMMER gives fantastic open deck areas, excellent outdoor interaction whether for lounging and sunning, entertaining and dining, soaking in the Jacuzzi or messing about on the water with the large collection of water toys.

ACCOMMODATION

Guests: - Full width master suite with double bed, study, walk in wardrobe, his and hers bathroom and separate toilet en suite - 2 x double cabins each with bathroom en-suite - 1 x double cabin with shower room en suite - 1 x twin cabin with shower room en suite **Crew:** - 2 x double cabin with bathroom en suite - 2 x twin cabins each with bathroom en suite - 2 x twin cabins each with pullman berth and bathroom en suite

WATERSPORTS

- 2 x 21ft Castoldi Jet tenders each with 125hp engine - 1 x 12ft Castoldi Jet tender with 125hp engine - 2 x Yamaha 120hp waverunners - 2 x kayaks - Bauer compressor with Nitrox system - Dive equipment & tanks - Water skis & tows

OTHER EQUIPMENT

- Stabilisers - Jacuzzi on deck, Satellite television, - Air-conditioning - Pod docking station - Satcom - Flat and plasma screen televisions - Fire fighting - DVD's, - Swim Platform - Kaleidoscope DVD server - Awning - LINN CD server and Creston touch screen remotes - Passerelle - Side Boarding Ladders

DECK EQUIPMENT

Swim Platform Hydraulic swim ladder, shower, removable professional fishing chair with equipment **Awning** Bridge deck & sun deck **Passerelle** Ackerboom passerelle operated with wireless remote **Side Boarding Ladders** MarQuipt, both sides, main & bridge

AUXILIARY MACHINERY & ELECTRICAL SYSTEM

Generators 3 x Caterpillar 160kW 1 x Caterpillar 84kW **Electricity** 400 / 230V AC 3-phase 50Hz 230V AC single-phase 50 Hz 24V DC

ANCILLARY EQUIPMENT

Stabilizers 2 x Koopnautic stabilisers **Air-Conditioning** Heinen & Hopman chilled water air-conditioning and fan-coil system with individual local controls throughout

SAFETY AND SECURITY EQUIPMENT

Safety Full MCA complement of approved safety equipment **Fire Fighting** MCA approved Marioff Hi-Fog system throughout Fire/smoke/heat detection system throughout **Security** CCTV system, security lighting and intrusion detection in compliance with International Ship & Port Security Code

COMMUNICATION EQUIPMENT

Satcom 2 x Nera Fleet77, 2 x Nera Mini-M, Broadband 512kb (in areas with coverage), 2 x ISDN 64kb (Fleet 77) **Other Radio equipment** ICS, C4 GMDSS control centre, Satcom-C, DSC VHF, SSB, Navtex, Cisco VOIP telephone exchange with fixed and Wi-Fi wireless phones

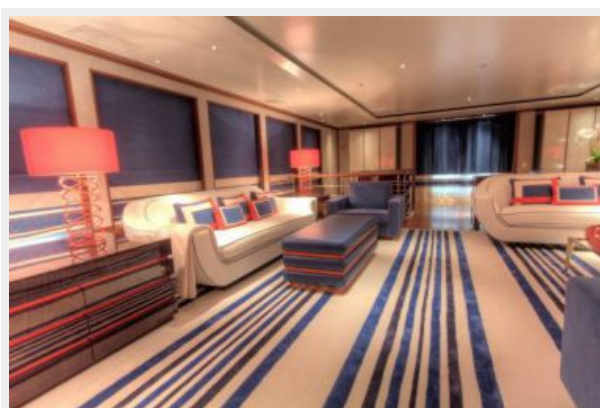
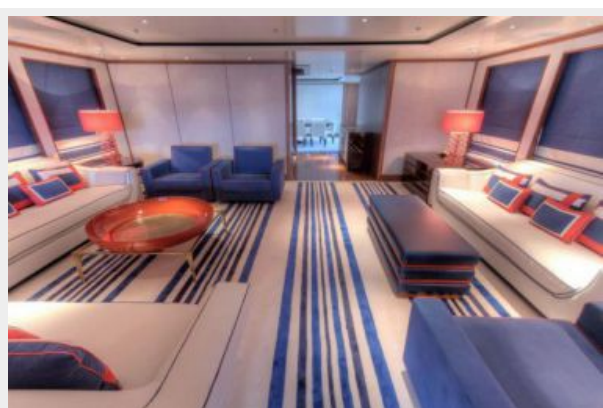
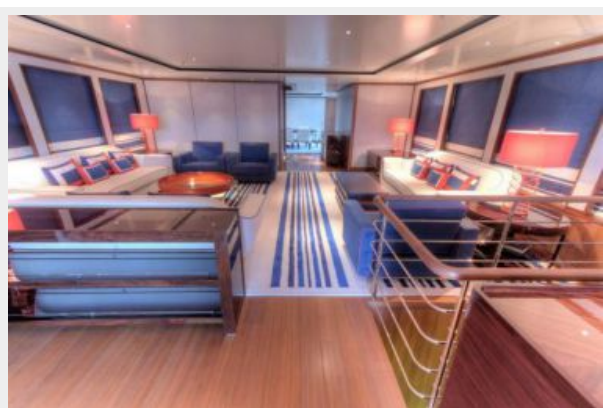
Exclusions

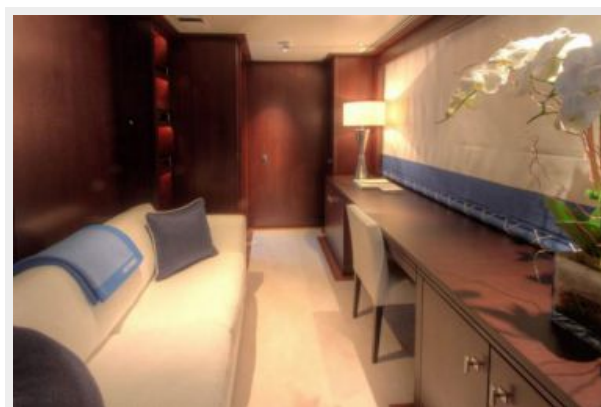
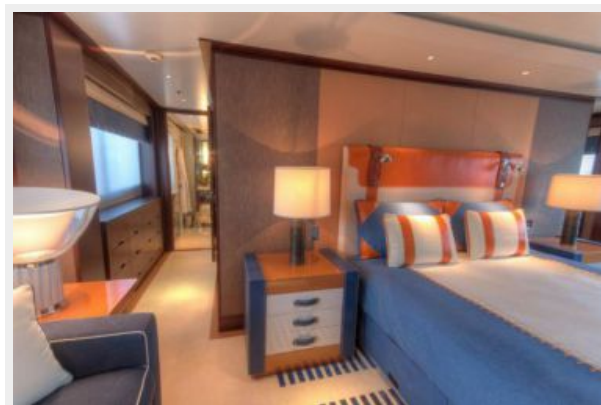
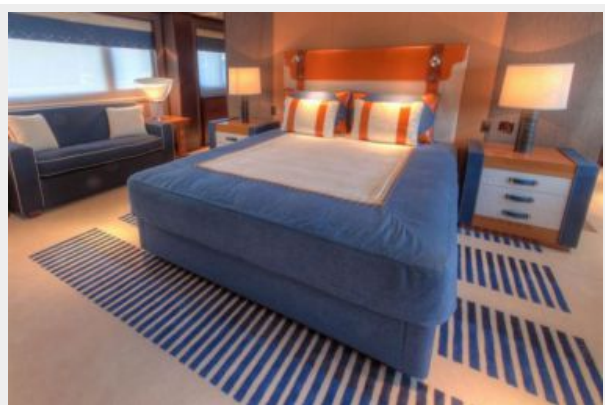
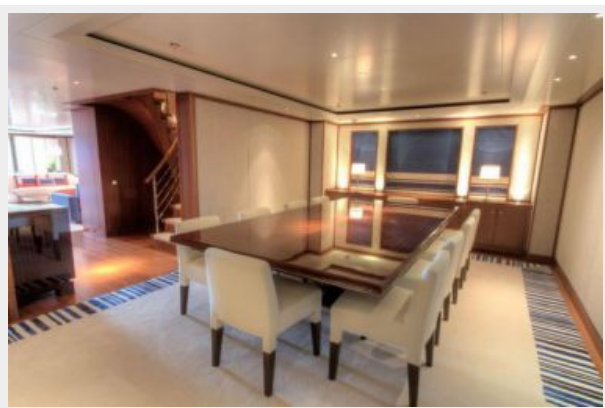
Owner's personal belongings.

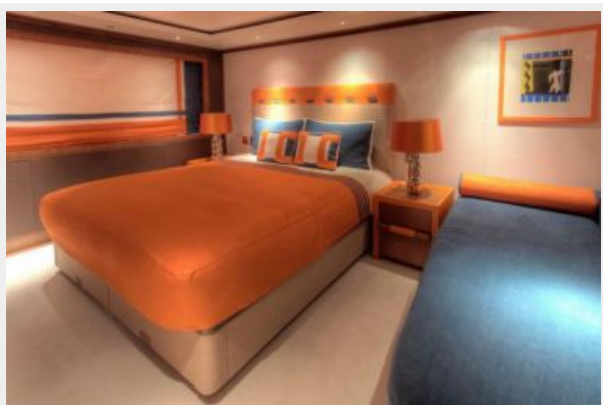
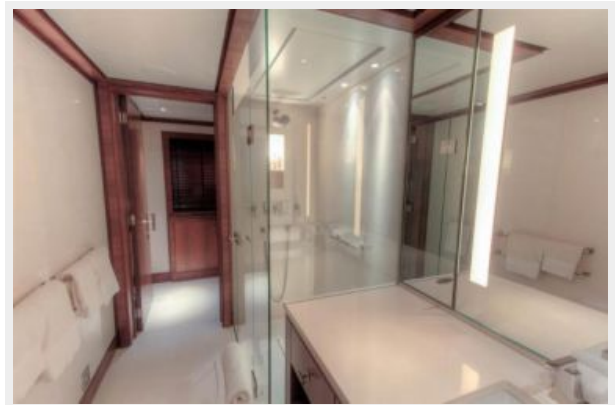
Disclaimer

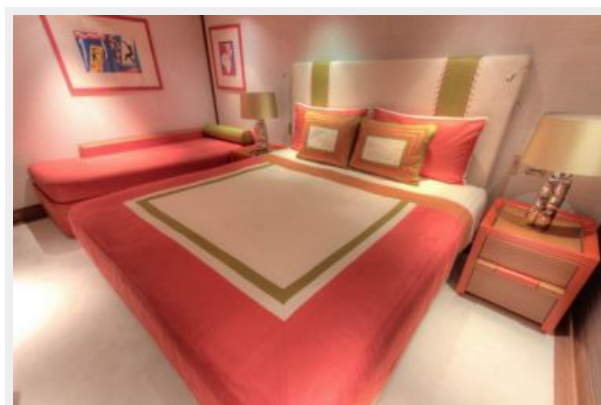
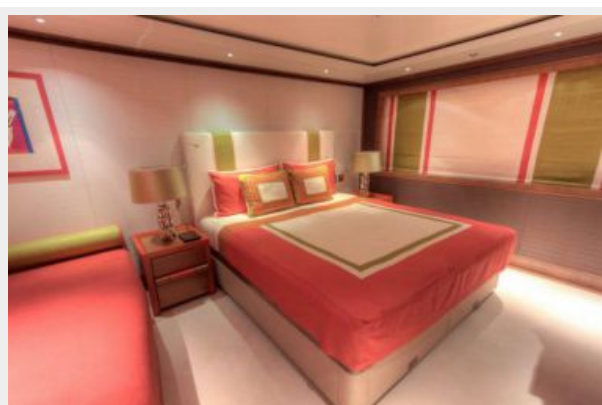
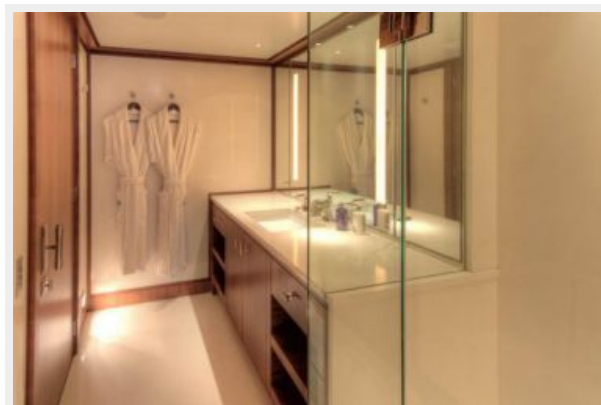
The Company offers the details of this vessel or yacht in good faith but cannot guarantee or warrant the accuracy of this information nor warrant the condition of the vessel. A buyer should instruct his representatives, agents, or his surveyors, to investigate such details as the buyer desires validated. This vessel or yacht is offered subject to prior sale, price change, or withdrawal without notice.

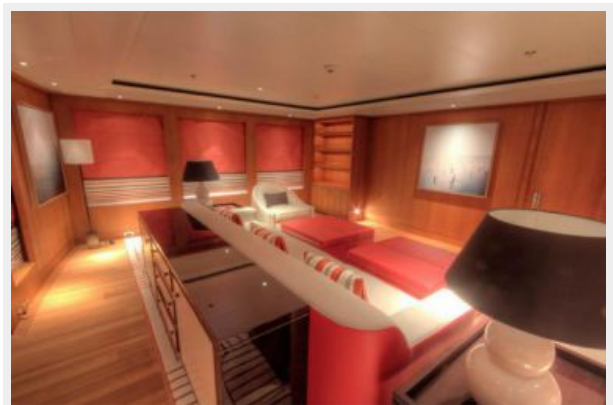
PHOTOS

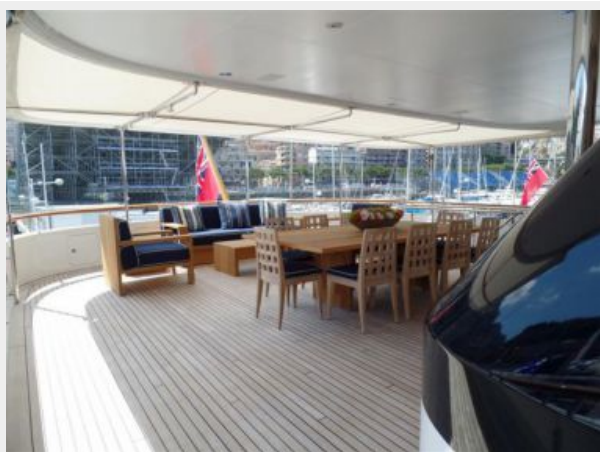


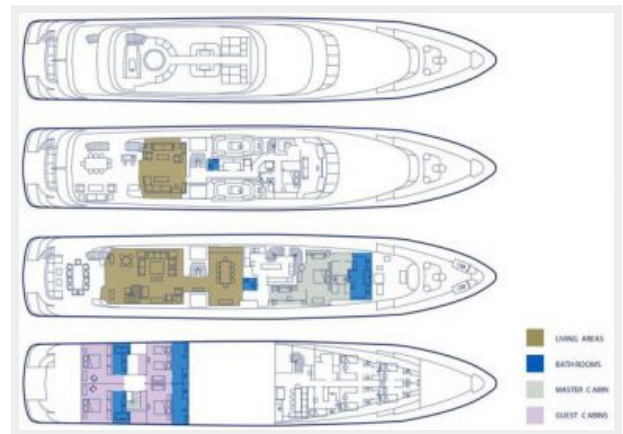












CONTACTS

Andrey Shestakov, leading yacht broker of the sales department of Shestakov Yacht Sales Inc. Shestakov Yacht Sales Inc., the official representative of the Miami/Fort Lauderdale FL headquarters.

Contact details

Email:
andrey@shestakovyachtsales.com

Web: shestakovyachtsales.com/en/

Telephones

USA: **+1(954)274-4435**

Office hours

Monday – Saturday: **9:00 - 21:00 EDT**

Sunday: **closed**

Address



Harbour Towne Marina, 850 NE 3rd St,
STE 213, Dania, FL 33004