

PONCHONCHOS — SEA RAY



Builder: SEA RAY

Year Built: 2005

Model: Motor Yacht

Price: PRICE ON APPLICATION

Location: United States

LOA: 55' 0" (16.76m)

Beam: 16' 0" (4.88m)

Max Draft: 4' 3" (1.30m)

Our experienced yacht broker, Andrey Shestakov, will help you choose and buy a yacht that best suits your needs **Ponchonchos — SEA RAY** from our catalogue. Presently, at Shestakov Yacht Sales Inc., we have a wide variety of yachts available on our sale's list. We also work in close contact with all the big yacht manufacturers from all over the world.

If you would like to buy a yacht **Ponchonchos — SEA RAY** or would like help answering any questions concerning purchasing, selling or chartering a yacht, please call **+1(954)274-4435**

TABLE OF CONTENTS

TABLE OF CONTENTS	2
SPECIFICATIONS	6
Basic Information	6
Dimensions	6
Speed, Capacities and Weight	6
Accommodations	6
Hull and Deck Information	6
Engine Information	6
DETAILED INFORMATION	7
Salon	7
Galley	7
CABIN FEATURES	8
Master Stateroom	8
VIP Stateroom	9
Guest Stateroom	9
Cockpit	9
Bridge and Helm	10
Electronics	11
Hull and Deck	11
Engines and Mechanical	12
Exclusions	12
Disclaimer	12
PHOTOS	13
Isinglass	13
Profile	13
Aft Profile	13
Quarter Profile	13
Quarter Profile II	14

Cockpit Bench Seat	14
Aft Cockpit	14
New Carpet	14
Aft Cockpit Speakers	15
Aft Cockpit TV Mount	15
Bridge Stairs	15
Entry Door	15
Starboard Gunnel	16
Port Gunnel	16
Bow	16
Bow II	16
Bow III	17
Windlass	17
Anchor Chain	17
Isenglass Window	17
Bridge	18
Helm	18
Captains Chairs	18
Aft Bridge Bench	18
Bridge Settee	18
Bridge Fridge and Ice maker	18
New Carpet	19
Garmin 4210	19
Raymarine C120	19
Overhead MAN Displays	19
1250 Hours	19
1250 Hours	19
Salon Sofa	20
Salon Sofa II	20

Salon to Starboard	20
Salon to Starboard II	20
Salon Entertainment	20
Galley	20
Galley II	21
Galley Settee	21
Settee Table	21
Beautiful Table	21
Master	21
Master II	21
Master III	22
Master IV	22
Master V	22
Master Head	22
Master Head II	23
VIP Stateroom	23
VIP to Starboard	23
VIP to Port	23
VIP/Day Head	24
VIP II	24
VIP/Day Head	24
VIP Shower	24
Hallway to Aft	25
Linen Closet	25
Washer/Dryer	25
3rd Staeroom	25
Engine Room Access	26
Hallway Forward	26
Clean Engine Room	26

Clean Engine Room II	26
Clean Engine Room II	27
Clean Engine Room III	27
MAN	27
MAN	27
Clean Engine Room V	27
Clean Engine Room IV	27
Clean Engine Room VI	28
Clean Engine Room VII	28
Clean Engine Room VIII	28
13.5kW Onan Generator	28
New Battery Charger	29
Spare Props	29
Layout	29
CONTACTS	30
Contact details	30
Telephones	30
Office hours	30
Address	30

SPECIFICATIONS

Basic Information

Category: Motor Yacht

Model Year: 2005

Year Built: 2005

Country: United States

Dimensions

LOA: 55' 0" (16.76m)

Beam: 16' 0" (4.88m)

Max Draft: 4' 3" (1.30m)

Speed, Capacities and Weight

Displacement: 51500 Pounds

Water Capacity: 150 Gallons

Holding Tank: 68 Gallons

Fuel Capacity: 700 Gallons

Accommodations

Total Berths: 6

Total Heads: 2

Hull and Deck Information

Hull Material: Fiberglass

Engine Information

Engines: 2

Manufacturer: MAN

Model: 900

Engine Type: Inboard

Fuel Type: Diesel

DETAILED INFORMATION

Salon

Entering through the large stainless steel door from the cockpit, the salon is warm and inviting with large windows bringing the outside in. Sofas to port and starboard present a warm atmosphere to come to at the end of the day or to get out of the sun and cool off.

Complete entertainment with SAT TV, Flat Screen TV and Bose Surround Sound

- Bose Surround Sound
- End Table
- Entertainment Center
- SAT TV
- Seating, Sofa
- Seating, Sofa
- Wood Blinds

Galley

Stepping up from the salon the galley is to starboard. Lots of counter space and plenty of storage. Side by Side Sub Zero Refrigerator and Freezer. The galley has full 360 degree view out to keep your enjoyment at view while preparing hors d'oeuvres or meals.

The U-shaped settee to port has ample seating, a beautiful wood table and dedicated storage drawers for plates and silverware. The hardwood floors are in great shape showing the care this owner has given this yacht.

- Coffeemaker, 120V
- Countertop, Solid Surface
- Flooring, Wood
- Freezer, 120V
- Microwave/Convection Oven
- Outlet, 12V Accessory
- Power Vent, 12V
- Refrigerator, 120V
- Storage, Cabinets
- Storage, Glass & Dish
- Stove, 240V
- Trash Receptacle
- Wine Rack

CABIN FEATURES

- Blinds, Wood
- Carbon Monoxide Monitors
- Carpet
- Carpet Runner
- Curtains
- Handrails
- Lighting, 120V
- Lighting, 120V Halogen
- Lighting, 120V Indirect
- Lighting, 24V Halogen
- Outlet, 12V Accessory
- Outlets & Switch Plates
- Outlets, 120V GFI Protected
- Outlets, Phone
- Pillows, Accent
- Shades
- Vacuum System, Central
- Wood Interior Package

Master Stateroom

The Master Stateroom is aft and is a full beam master. Windows on both sides for light, the queen master berth has walk around space on both sides. His and hers closets with vanity, lots of storage all around. The SAT TV and Bose Entertainment System gives the master stateroom a place for the entire family watch movies in the evening.

The master head is light and open with a full walk in shower.

- Bed, Queen-Size
- Countertop, Tempered Glass Bar
- Door, Privacy
- Hanging Locker
- Stereo, Acoustimass
- Storage, Dresser
- Storage, Locker
- TV, 20" Flatscreen LCD
- **MASTER HEAD/SHOWER:**
 - Bath Accessories
 - Door, Privacy
 - Flooring, Wood
 - Handrails

- Head, Large (VacuFlush)
- Power Vent, 24V
- Shower
- Storage, Medicine Cabinet
- Vanity

VIP Stateroom

The VIP is forward, farthest from the Master. Large queen berth and ample storage with hanging lockers to both sides. Private entry into the VIP/Day Head.

- Bed, Queen-Size
- Hanging Locker
- Mirrored Rope Locker Bulkhead
- Storage, Cabinet
- TV/DVD Combo, 13"

GUEST HEAD/SHOWER:

- Bath Accessories
- Door, Privacy
- Door, Privacy
- Flooring, Tile
- Handrail
- Head, Large (VacuFlush)
- Shower
- Storage, Medicine Cabinet
- Vanity

Guest Stateroom

Sea Ray designed this yacht with space for a 3rd stateroom. This bunk room has extra large bunk berths set in a way to use the space for drawers and hanging locker.

- Bed, Lower Bunk
- Bed, Upper Bunk
- Hanging Locker
- Storage, Shelf
- TV/DVD Combo, 13"
- Washer/Dryer Combo

Cockpit

The aft cockpit on *Ponchonchos* gives a reception area on o the yacht. Very large entry door from the swim platform, large molded steps, a very safe place to land on the boat.

New carpet, a TV mount, stereo speakers, this space also provides the launch pad for the day on the hook at the island. The concealed davit makes launching and retrieving the dinghy easy and quick.

Molded stairs to the side decks and up to the bridge are wide and deep providing non-skid surface for safety.

- Carpet Liner
- Concealed Davit
- Door, Cabin Entry
- Door, Transom
- Floor Liner, Fiberglass
- Handrails
- Hatch, Engine Service
- Lighting, Indirect
- Outlet, 120V GFI Protected
- Seating, Aft Bench
- Steps
- Storage, Aft Coaming
- Storage, Side Panels

Bridge and Helm

The molded staircase brings you up to the large bridge. Laid out with dual purpose, this space gives the captain a helm area designed for cruising with navigation and propulsion aides at the ready. Up high, the captain has 360 view of the waterway.

With a bench seat behind the helm and large U-shaped settee forward, there is seating for all to enjoy the view with the captain.

The wet bar with fridge and ice maker means fewer trips below for drinks and snacks.

- Beverage Holders
- Carpet Liner, Snap-In
- Handrails
- Hardtop, Fiberglass
- Icemaker, 120V
- Lighting, Indirect
- Outlet, 120V GFI Protected
- Outlet, 12V Accessory
- Outlet, Cable TV
- Refrigerator, 120V

- Seating, Aft Bench
- Seating, Helm (2)
- Seating, U-Shaped
- Ships Bell
- Steering Wheel, Wood-Accent
- Steps
- Stereo, 12V AM/FM Single CD
- Storage, Drawer
- Storage, Forward Bridge Access
- Storage, Helm Access Door
- Table, Bridge
- Wet Bar

Electronics

- Raymarine RL80C
- Garmin 4212 Chartplotter
- Raymarine C120 Chartplotter
- Raymarine Autopilot ST7001 +
- Ray VHF
- Northstar 6000I
- Compass
- Clarion Stereo
- Clarion 6 Disc Changer
- ACR Spotlight
- SAT TV

Hull and Deck

- Bottom Paint
- Bow Rail
- Cleats, Custom Sea Ray
- Deck Fill Plates
- Deck Rails
- Gel Coat
- Graphics, Striping
- Handrails
- Hatch, Deck Vent
- Lights, Navigation
- Portlights, (6 Fixed, 2 Opening)
- Resin
- Rub Rail, PVC

- Storage, Transom Wall
- Swim Platform, Extended
- Vent System, Engine Room
- Windows
- Windshield

Engines and Mechanical

Extra clean and well looked after. The 1000 hour service was provided. Access to the engine room and mechanical room is through the cockpit floor hatch. Easy access to fuel filters and strainers with a clean view of the entire space.

- Twin MAN 800hp Diesels (1250 Hours)
- 17kw Onan Generator
- Dual Racors
- C-Power ISO Transformer
- Bow Thruster
- Batteries (New March 2014)

- Glendinning Shore Power
- Lighting
- Bilge Pumps
- 12 Volt Plug
- Strainers
- Oil Change System
- Halon Fire Suppression

Exclusions

Owner's personal belongings.

Disclaimer

The Company offers the details of this vessel or yacht in good faith but cannot guarantee or warrant the accuracy of this information nor warrant the condition of the vessel. A buyer should instruct his representatives, agents, or his surveyors, to investigate such details as the buyer desires validated. This vessel or yacht is offered subject to prior sale, price change, or withdrawal without notice.

PHOTOS

Isinglass



Profile



Aft Profile



Quarter Profile



Quarter Profile II



Cockpit Bench Seat



Aft Cockpit



New Carpet



Aft Cockpit Speakers



Aft Cockpit TV Mount



Entry Door



Bridge Stairs



Starboard Gunnel



Port Gunnel



Bow



Bow II



Windlass



Bow III



Isenglass Window



Anchor Chain



Bridge



Helm



Captains Chairs



Aft Bridge Bench



Bridge Settee



Bridge Fridge and IceMaker



New Carpet



Garmin 4210



Raymarine C120



Overhead MAN Displays



1250 Hours



1250 Hours



Salon Sofa



Salon Sofa II



Salon to Starboard



Salon to Starboard II



Salon Entertainment



Galley



Galley II



Galley Settee



Settee Table



Beautiful Table



Master



Master II



Master III



Master IV



Master V



Master Head



Master Head II



VIP Stateroom



VIP to Port



VIP to Starboard



VIP II



VIP/Day Head



VIP/Day Head



VIP Shower



Hallway to Aft



Linen Closet



Washer/Dryer



3rd Staeroom



Hallway Forward



Engine Room Access



Clean Engine Room



Clean Engine Room II



Clean Engine Room II



Clean Engine Room III



MAN



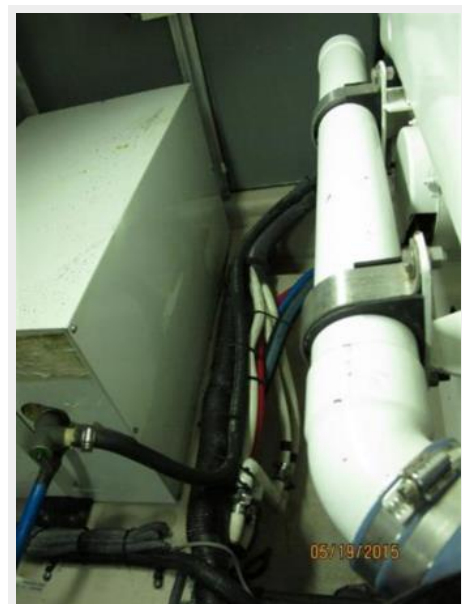
MAN



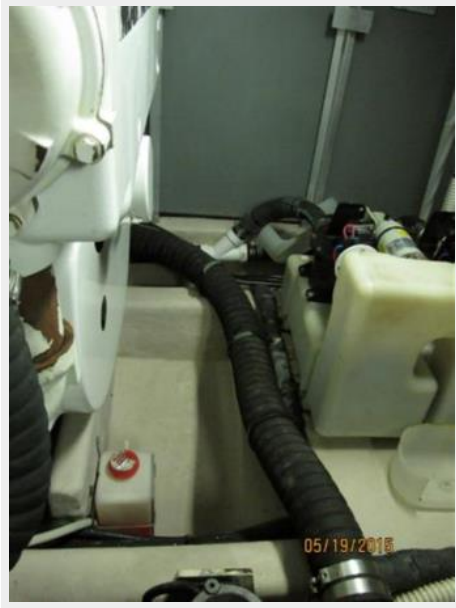
Clean Engine Room IV



Clean Engine Room V



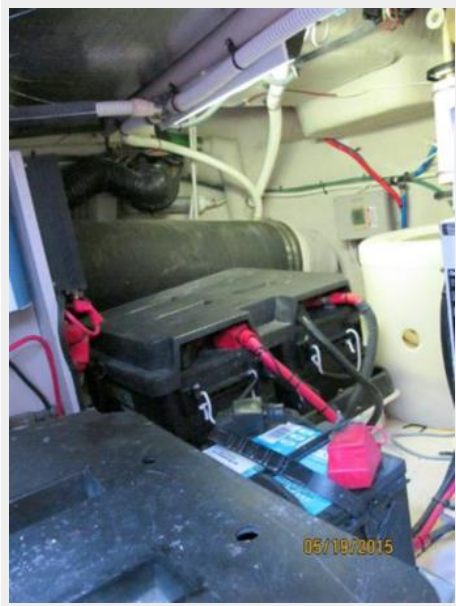
Clean Engine Room VI



Clean Engine Room VII



Clean Engine Room VIII



13.5kW Onan Generator



New Battery Charger



Spare Props



Layout



CONTACTS

Andrey Shestakov, leading yacht broker of the sales department of Shestakov Yacht Sales Inc. Shestakov Yacht Sales Inc., the official representative of the Miami/Fort Lauderdale FL headquarters.

Contact details

Email: andrey@shestakovyachtsales.com

Web: shestakovyachtsales.com/en/

Telephones

USA: +1(954)274-4435

Office hours

Monday – Saturday: **9:00 - 21:00** EDT

Sunday: **closed**

Address



Harbour Towne Marina, 850 NE 3rd St,
STE 213, Dania, FL 33004