

## ATTITUDE ADJUSTMENT — BENETEAU



**Судостроитель:** BENETEAU

**Год постройки:** 2006

**Модель:** Cruising/Racing Sailboat

**Цена:** ЦЕНА ЯХТЫ ПО ЗАПРОСУ

**Местонахождение:** United States

**Длина общая:** 50' 0" (15.24m)

**Мин. осадка:** 6' 9" (2.06m)

Купить **Attitude Adjustment — BENETEAU** а также выбрать подходящую вам яхту из нашего каталога яхт вам поможет опытный яхтенный брокер Андрей Шестаков. На сегодняшний день компания **Shestakov Yacht Sales Inc.** имеет большое количество яхт в собственном списке продаж, а также тесно сотрудничает со всеми крупными яхтенными производителями по всему миру.

Для того чтобы купить яхту **Attitude Adjustment — BENETEAU** а также проконсультироваться по любому вопросу связанному с покупкой, продажей, чартером яхт позвоните по телефону **+7(918)465-66-44**.

# ОГЛАВЛЕНИЕ

ОГЛАВЛЕНИЕ	2
ХАРАКТЕРИСТИКИ	5
Обзор	5
Основная информация	5
Размеры	5
Скорость, вместимость и масса	6
Размещение	6
Корпус и палуба	6
Информация о двигателе	6
ПОДРОБНОЕ ОПИСАНИЕ	7
Description	7
Accommodations	7
Galley	8
Electronics & Navigation	8
Sails & Rigging	8
Deck	9
Mechanical Equipment and Details	10
Electrical	10
Исключения	10
Отказ от ответственности	10
ФОТОГРАФИИ	12
spacious cockpit and dual helm	12
cockpit seating and table	12
salon	12
settee	12
starboard salon and nav desk	12
galley	12
refrigerator 1 and stove	13

refrigerator 2	13
galley and center counter	13
forward facing nav desk	13
new VHF w/AIS & GPS and electric panel	13
master stateroom	13
head 1 of 5	14
starboard guest cabin	14
starboard aft head	14
port tuest cabin	14
dodger and bimini	14
cockpit seating	14
starboard helm and BBQ	15
NEW Electronics on swiveling navpod	15
Raymarine E90W chartplotter/GPS	15
starboard helm station	15
NEW helm display starboard	15
port helm station	15
NEW helm displays port	16
port helm station looking aft	16
Lewmar primary winch	16
companionway	16
port Spinlock line clutches	16
starboard line clutches	16
Yanmar 100 hp engine	17
side access	17
excellent 3 sided access	17
Onan generator	17
mast	18
generator panel	18

---

lines leading to cockpit	18
roller furling headsail - new jib 2013	18
double anchor roller	19
electric windlass w/ handheld control	19
divided anchor locker	19
stern transom walkthrough	20
10 man liferaft - needs re-cert	20
rudder and prop	20
manufacturer Provided Image	20
port view	20
<b>КОНТАКТЫ</b>	<b>21</b>
Контактная информация	21
Телефоны	21
Время работы	21
Адрес	21

# ХАРАКТЕРИСТИКИ

## Обзор

*"Attitude Adjustment" is an Owner version, 3 stateroom/5 head layout. The large master stateroom forward features a queen island berth, additional sleeping quarters include the 2 aft double cabins and sail locker forward (crew quarters with head). Her roomy interior will provide comfortable and private accommodations for your family and friends.*

*Perfect for island living, you will literally live in this cockpit with her enormous shaded cockpit with long bench seating, dropleaf table, double helm stations, walk through transom and swim platform. The 16' beam and wide walk around decks provide comfort and ease of movement going forward. She is clean and in nicely maintained condition.*

She has been recently upgraded with all new Raymarine electronics, E90W Chartplotter/GPS, autopilot, VHF with AIS &GPS!

Other features include a 100 hp Yanmar engine, 9kw Onan generator, air conditioning, Stack pack on fully battened main, NEW Jib (2013), all lines to cockpit for easy handling, (3) new AGM batteries 2015, 10 man liferaft (needs recert). Recent price reduction! *Located in Harbortown Marina, Fort Pierce, Florida      Transferable liveaboard slip*

## Основная информация

Тип судна: Cruising/Racing Sailboat

Подкатегория: Sloop

Модельный год: 2006

Год постройки: 2006

Страна: United States

## Размеры

Длина общая: 50' 0" (15.24m)

Мин. осадка: 6' 9" (2.06m)

Длина привального бруса: 51' 2"  
(15.60m)

---

## Скорость, вместимость и масса

---

Водоизмещение: 32800 Pounds

Вместимость воды: 246 Gallons

Объем топливного бака: 116 Gallons

---

## Размещение

---

Всего кают: 3

Всего ком. состава: 5

---

## Корпус и палуба

---

Материал корпуса: Fiberglass

---

## Информация о двигателе

---

Двигатели: 1

Производитель: Yanmar

Тип двигателя: Inboard

Тип топлива: Diesel

---

# ПОДРОБНОЕ ОПИСАНИЕ

---

## Description

---

*"Attitude Adjustment" is an Owner version, 3 stateroom/5 head layout. The large master stateroom forward features a queen island berth, additional sleeping quarters include the 2 aft double cabins and sail locker forward (crew quarters with head). Her roomy interior will provide comfortable and private accommodations for your family and friends.*

*Perfect for island living, you will literally live in this cockpit with her enormous shaded cockpit with long bench seating, dropleaf table, double helm stations, walk through transom and swim platform. The 16' beam and wide walk around decks provide comfort and ease of movement going forward. She is in nicely maintained condition.*

**She has been recently upgraded with all new Raymarine electronics, E90W Chartplotter/GPS, autopilot, VHF with AIS &GPS!**

**Other features include a 100 hp Yanmar engine, 9kw Onan generator, air conditioning, Stack pack on fully battened main, NEW Jib (2013), all lines to cockpit for easy handling, (3) new AGM batteries 2015, 10 man liferaft (needs recert).**

## Accommodations

---

What a great layout and design! The first thing you will notice about the interior layout is the just how big she is. The 16' beam combined with the tall headroom offers an amazing amount of living space. This is a 3 cabin/4 head layout with a single crew cabin/sail locker forward with separate entry hatch.

The central salon features a wrap around upholstered settee with a high gloss teak table. The galley runs the length of the port side with a center island prep station and storage cabinet with a bench seating facing the table. The forward facing navigation desk is to starboard. The generous master stateroom forward features a walk around queen island berth, hanging lockers, drawers and a private head and shower to each side. This layout is molded in the headliner for a dividing wall to be installed if ever 4 cabins were desired. The two aft guest double staterooms each have a private head and shower.

There is an abundant amount of natural light and good ventilation with the opening hatches and large opening ports.

- teak joinery and cabinets
- white vinyl upholstery in salon
- wrap around settee and center bench
- hi gloss teak dining table
- island queen berth forward

- hanging lockers and drawers
- (4) Lewmar opening hatches w/Oceanair sunshades and screens
- (14) opening ports
- (3) air conditioning units, (1) new in forward cabin 2014
- (6) 12V fans
- flatscreen TV
- (2) private manual heads forward w/shower
- (2) private manual heads aft w/shower

## Galley

---

Here is a galley to please any chef! Plenty of room to prepare food for the whole crowd. Lateral galley on the port side with additional storage cabinets, countertop space and 2nd refrigerator in passageway island.

- (2) large top loading refrigeration units
- Eno 3 burner propane stove and oven
- double SS sink
- hot and cold pressure water system
- foot pump
- hot water heater
- microwave
- more than generous storage pantry and cabinets
- additional provisioning room under cabin sole

## Electronics & Navigation

---

- ALL NEW ELECTRONICS 2014!
- New Raymarine E90W Chartplotter/GPS Multifunction display
- New swiveling NavPod
- New Raymarine P70R autopilot controller rotary
- New Raymarine i70 Sailpack with depth, wind & speed at both helms
- New Standard Horizon VHF radio with AIS & GPS functions
- New VHF antenna and cabling
- New Anamometer 2015
- (2) Platismo 3" compass
- Clarion stereo w/ipod port
- (2) cockpit speakers

## Sails & Rigging

---

- fractional sloop rig



- fully battened main
- Stack pack w/ lazy jacks
- Profurl roller furling
- New jib (2013)
- anodized aluminum mast and boom
- deck stepped mast
- wire standing rigging w/Staloc fittings
- external chainplates
- double spreaders
- running rigging led to cockpit thru Lewmar blocks
- (2) sets of Spinlock line clutches
- (2) Harken 44 2 speed halyard winches on coach roof
- (2) Harken 53 2 speed ST primary winches
- genoa tracks and cars inboard on side decks

## Deck

---

- double bow rollers
- Kobra anchor w/ chain and rope rode
- Quick electric windlass w/ handheld controls
- SS bow rail
- large divided anchor locker
- cabin or large sail locker accessed through forward hatch
- wide walk around side decks
- SS handrails on cabin top
- aluminum toe rails
- large aluminum cleats
- SS stanchions and lifelines
- side gates
- walk thru transom with fold up gate
- 10 man liferaft (needs recertification)
- liferaft storage area in stern
- swim platform and swim ladder
- cockpit shower
- SS corner stern rails
- dual helm stations and seating
- long bench cockpit seating
- long cockpit table w/ folding leafs
- dodger and bimini
- (2) large cockpit lockers
- PFD's
- jacklines
- teak louvered companionway doors

- Lexan sliding companionway hatch
- horseshoe buoy
- outboard mount on stern rail
- Magma BBQ grill on stern rail (New 2014)
- Whale gusher manual bilge pump in cockpit
- emergency steering
- boat hook

---

## Mechanical Equipment and Details

---

- 100hp Yanmar , estimate 3200 hours, looks very clean
- Morse controls
- Shaft drive
- Racor filter
- excellent 3 sided engine access
- sound insulation
- water heater
- (3) air conditioning units (1) New in forward cabin
- (5) Jabsco manual heads
- holding tanks and Y valves
- Rule bilge pump (new)

---

## Electrical

---

- Onan 9kw Generator
- 60 amp alternator
- (4) House Batteries in 2 banks, one bank is new
- (2) New 4D AGM house batteries (2015)
- (1) New 31 DT AGM Dedicated Engine Start Battery (2015)
- Dedicated Generator Battery
- 60 amp charger
- (2) 50 amp hard wired shore power cords
- splitter
- 50 amp shore power cord

---

## Исключения

---

При продаже яхты исключаются личные вещи владельца.

---

## Отказ от ответственности

---

Компания предоставляет описание судна или яхты добросовестно, но не может гарантировать точность этой информации, а также не ручается за техническое состояние. Покупатель должен проинструктировать своих агентов или оценщиков исследовать представленную информацию более подробно, по собственному желанию. Продажа судна или яхты, изменение цены или снятие с продажи будет происходить без предварительного уведомления.

# ФОТОГРАФИИ

**spacious cockpit and dual helm**



**cockpit seating and table**



**salon**



**settee**



**starboard salon and nav desk**



**galley**



**refrigerator 1 and stove**



**refrigerator 2**



**galley and center counter**



**forward facing nav desk**



**new VHF w/AIS & GPS and electric panel**



**master stateroom**



**head 1 of 5**



**starboard guest cabin**



**starboard aft head**



**port guest cabin**



**dodger and bimini**



**cockpit seating**



**starboard helm and BBQ**



**NEW Electronics on swiveling navpod**



**Raymarine E90W chartplotter/GPS**



**starboard helm station**



**NEW helm display starboard**



**port helm station**



**NEW helm displays port**



**port helm station looking aft**



**Lewmar primary winch**



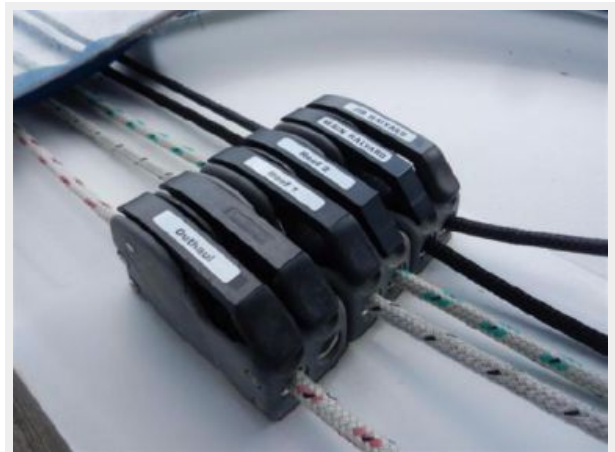
**companionway**



**port Spinlock line clutches**



**starboard line clutches**





### Yanmar 100 hp engine



### side access



### excellent 3 sided access



### Onan generator



**generator panel**



**mast**



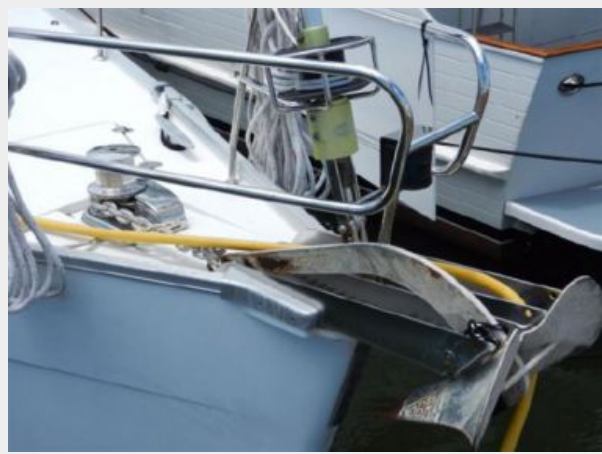
**lines leading to cockpit**



**roller furling headsail - new jib 2013**



**double anchor roller**



**electric windlass w/ handheld control**



**divided anchor locker**



**stern transom walkthrough**



**10 man liferaft - needs re-cert**



**rudder and prop**



**manufacturer Provided Image**



**port view**



# КОНТАКТЫ

---

Андрей Шестаков (Andrey Shestakov) – ведущий яхтенный брокер отдела продаж яхт и судов компании Shestakov Yacht Sales Inc. Официальный представитель Shestakov Yacht Sales Inc. для русскоговорящих клиентов в центральном офисе компании в Майами/Форт Лодердейл/Флорида/США.

## Контактная информация

---

Email: [andrey@shestakovyachtsales.com](mailto:andrey@shestakovyachtsales.com)

Web: [shestakovyachtsales.com](http://shestakovyachtsales.com)

## Телефоны

---

Краснодарский край: **+7(918)465-66-44**

США, Майами, Флорида: **+1(954)274-4435**

## Время работы

---

Понедельник – Суббота: **9:00 - 21:00**  
EDT

Воскресенье: **Закрыто**

## Адрес

---



Harbour Towne Marina, 850 NE 3rd St,  
STE 213, Dania, FL 33004