

## MINNIE BELLA — FORMULA



**Builder:** FORMULA

**Year Built:** 1998

**Model:** Cruiser

**Price:** PRICE ON APPLICATION

**Location:** United States

**LOA:** 41' 0" (12.50m)

**Beam:** 13' 6" (4.11m)

**Max Draft:** 2' 9" (0.84m)

**Cruise Speed:** 20 Kts. (23 MPH)

**Max Speed:** 30 Kts. (35 MPH)

Our experienced yacht broker, Andrey Shestakov, will help you choose and buy a yacht that best suits your needs **Minnie Bella — FORMULA** from our catalogue. Presently, at Shestakov Yacht Sales Inc., we have a wide variety of yachts available on our sale's list. We also work in close contact with all the big yacht manufacturers from all over the world.

If you would like to buy a yacht **Minnie Bella — FORMULA** or would like help answering any questions concerning purchasing, selling or chartering a yacht, please call **+1(954)274-4435**

---

# TABLE OF CONTENTS

---

TABLE OF CONTENTS	2
SPECIFICATIONS	4
Basic Information	4
Dimensions	4
Speed, Capacities and Weight	4
Accommodations	4
Hull and Deck Information	4
Engine Information	5
DETAILED INFORMATION	6
Introduction	6
Accommodations	6
Salon	6
Galley	6
Master Stateroom	7
Mid Cabin	7
Head	7
Navigation & Electronics	7
Deck & Hull	7
Cockpit	8
Engine & Mechanical	9
Electrical Equipment	9
Exclusions	9
Disclaimer	9
PHOTOS	11
CONTACTS	18
Contact details	18
Telephones	18
Office hours	18

---

Address

18

---

# SPECIFICATIONS

---

## Basic Information

---

**Category:** Cruiser

**Sub Category:** Express

**Model Year:** 1998

**Year Built:** 1998

**Country:** United States

## Dimensions

---

**LOA:** 41' 0" (12.50m)

**Beam:** 13' 6" (4.11m)

**Max Draft:** 2' 9" (0.84m)

## Speed, Capacities and Weight

---

**Cruise Speed:** 20 Kts. (23 MPH)

**Max Speed:** 30 Kts. (35 MPH)

**Displacement:** 20000 Pounds

**Water Capacity:** 90 Gallons

**Holding Tank:** 40 Gallons

**Fuel Capacity:** 350 Gallons

## Accommodations

---

**Total Cabins:** 2

## Hull and Deck Information

---

**Hull Material:** Fiberglass

---

## Engine Information

---

**Engines:** 2

**Manufacturer:** Cummins

**Model:** 6CTA Diamond Series

**Engine Type:** Inboard

**Fuel Type:** Diesel

---

# DETAILED INFORMATION

---

---

## Introduction

---

The Formula 41 is a high quality performance express cruiser with sleek lines and a bold appearance. Her tunnel drives allow shallow water cruising and her Cummins Diamond Series engines provide a mid 20 knot cruise and a top end of 30+ knots.

"Minnie Bella" is priced to sell and mechanically the boat is in excellent condition. This is a great opportunity to own a high quality stylish diesel powered express at a great price!

---

## Accommodations

---

Mid cabin layout with master stateroom forward and salon amidships. The mid cabin doubles as a lounge area with a U-shaped sofa that converts to a berth with a concealed privacy enclosure. Access to the cockpit is via a companionway aft of the salon.

---

## Salon

---

- Built-in WalVac® sweeper system
- Curved UltraLeather sofa seating w/dual-height dining table & filler cushion
- Two padded UltraLeather pedestal dining stools
- Decor pillows
- Dynex Flatscreen TV
- Alpine CD player
- In-floor storage compartments
- Fire extinguisher
- Carbon monoxide fume detector
- In-floor cabin bilge pump

---

## Galley

---

- Complete entertainment galley w/storage
- Dovetailed drawers
- 120V/12V standup refrigerator/freezer with panels and cabinet doors
- Full Corian countertop
- Polished double-bowl stainless sink w/flush Corian covers
- Gourmet Spray® faucet
- 2-Burner electric stove w/exhaust fan
- Sharp microwave oven
- Coffee maker

- Concealed in-counter trash receptacle
- In-counter blender unit

---

## Master Stateroom

---

- Private forward stateroom with centerline bed w/mattress & stowage below
- Locking cabin door
- Cedar-lined hanging locker w/automatic light
- Individual reading lights

---

## Mid Cabin

---

- Ultra-Leather HP aft cabin lounge/double berth w/filler cushion & privacy enclosure
- Aft cabin hanging locker w/automatic light
- Cocktail table
- Reverse cycle air conditioner w/2-zone digital climate control

---

## Head

---

- Dual-entry molded fiberglass private head compartment w/molded fiberglass vanity
- Corian counter
- Polished stainless sink
- VacuFlush® unit w/holding tank & pump out
- Separate circular stall shower w/curved acrylic door & molded-in shelf & exhaust fan
- 120V & 12V Electrical panels

---

## Navigation & Electronics

---

- Remote control ACR searchlight
- Garmin GPS 2010
- Autohelm depth sounder
- VHF radio
- Ritchie® compass
- Air horn
- Bennett trim tabs & indicators
- Tilt s/s wheel

---

## Deck & Hull

---

- NMMA Yacht Certification

- Foam-filled hull cavities
- Chemically bonded & thru-bolted deck-to-hull joint
- Heavy-duty PVC gunwale w/stainless steel insert
- Tinted, tempered curved glass windshield w/polished stainless steel frame
- Windshield wipers
- Windshield center walk-thru
- Electric windlass w/200' chain & Bruce® anchor
- Stainless steel hardware & 316L stainless welded rails
- (3) Bomar® cabin venting hatches w/screens
- (6) Port lights w/screens & draperies
- Nonskid deck center walkway & walk-around
- Integrated bow platform
- Concealed anchor windlass w/fiberglass anchor locker
- Two foam deck sun pads w/316L stainless rails
- Aluminum radar arch w/integrated flagstaff/mast light
- Integrated swim platform
- Concealed 316L stainless steel swim ladder
- Concealed transom hookups for city water, cable TV & telephone w/shore power cords

## Cockpit

---

- One-piece fiberglass deck & cockpit liner
- Rudder angle indicator
- Synchronizing tachometer
- Teleflex® shift & throttle controls
- Hydraulic steering w/tilt stainless steel wheel
- Protected chart storage, dash locker & drink holders
- Auxiliary 12V outlet
- Marine grade West Marine outdoor speakers
- Illuminated waterproof accessory rocker switches w/E-T-A® circuit breakers
- Battery parallel switch
- Cockpit courtesy lighting
- Triple command seating w/dual-position helm seat & fiberglass-lined storage
- Molded fiberglass in-dash deck access steps
- Port lounge w/pneumatic hatch lift & fiberglass-lined storage
- U-shaped lounge seating w/fold-away aft lounge & fiberglass-lined storage
- Integral 316L stainless safety rails
- Fire extinguisher
- Line locker
- Concealed fender storage aft
- Pneumatic-assist transom door
- Bimini Top
- Cockpit Refrigerator



---

## Engine & Mechanical

---

- Motorized hatch lift
- Integrated quick access engine hatch
- Courtesy lighting
- Fume detector
- Automatic fire extinguisher
- Thru-bolted engine mounts
- Power steering
- Remote oil filters
- Remote 12V oil change system
- Alternator noise filters
- Engine raw water strainers/seacocks
- Eco Sound EPS 1000TM exhaust system
- Bilge blowers
- Automatic bilge pumps (2)
- Bilge high water alarm
- Bronze rudders & struts
- 2" Stainless steel propeller shafts
- Pressurized water system
- Water level gauge
- 120V Water heater w/heat exchanger

---

## Electrical Equipment

---

- Kohler 800 diesel generator w/ 719 hrs
- Battery charger 80 Am
- Galvanic corrosion protection system
- Disconnect switches for auxiliary & starting batteries
- 120V Shorepower w/galvanic isolator and two 30-amp cords

---

## Exclusions

---

Owner's personal belongings.

---

## Disclaimer

---

The Company offers the details of this vessel or yacht in good faith but cannot guarantee or warrant the accuracy of this information nor warrant the condition of the vessel. A buyer should instruct his representatives, agents, or his surveyors, to investigate such details as the buyer desires validated. This vessel or yacht is offered subject to prior sale, price change, or withdrawal without notice.



# PHOTOS

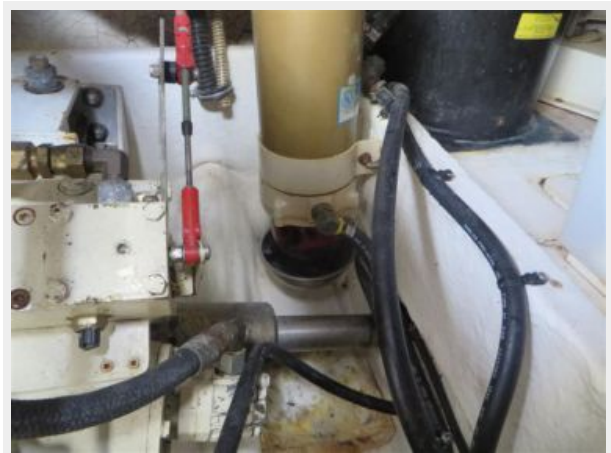
















---

# CONTACTS

---

Andrey Shestakov, leading yacht broker of the sales department of Shestakov Yacht Sales Inc. Shestakov Yacht Sales Inc., the official representative of the Miami/Fort Lauderdale FL headquarters.

---

## Contact details

---

Email: [andrey@shestakovyachtsales.com](mailto:andrey@shestakovyachtsales.com)

Web: [shestakovyachtsales.com/en/](http://shestakovyachtsales.com/en/)

---

## Telephones

---

USA: +1(954)274-4435

---

## Office hours

---

Monday – Saturday: **9:00 - 21:00** EDT

Sunday: **closed**

---

## Address

---



Harbour Towne Marina, 850 NE 3rd St,  
STE 213, Dania, FL 33004