

CONSTELLATION — WESTPORT



Судостроитель: WESTPORT

Год постройки: 2006

Модель: Моторная яхта

Цена: **ЦЕНА ЯХТЫ ПО ЗАПРОСУ**

Местонахождение: United States

Длина общая: 130' 0" (39.62m)

Ширина: 26' 0" (7.92m)

Мин. осадка: 6' 7" (2.01m)

Крейс. скорость: 20 Kts. (23 MPH)

Макс. скорость: 26 Kts. (30 MPH)

Купить **CONSTELLATION — WESTPORT** а также выбрать подходящую вам яхту из нашего каталога яхт вам поможет опытный яхтенный брокер Андрей Шестаков. На сегодняшний день компания **Shestakov Yacht Sales Inc.** имеет большое количество яхт в собственном списке продаж, а также тесно сотрудничает со всеми крупными яхтенными производителями по всему миру.

Для того чтобы купить яхту **CONSTELLATION — WESTPORT** а также проконсультироваться по любому вопросу связанному с покупкой, продажей, чартером яхт позвоните по телефону **+7(918)465-66-44**.

ОГЛАВЛЕНИЕ

ОГЛАВЛЕНИЕ	2
ХАРАКТЕРИСТИКИ	4
Основная информация	4
Размеры	4
Скорость, вместимость и масса	4
Размещение	4
Корпус и палуба	5
Информация о двигателе	5
ПОДРОБНОЕ ОПИСАНИЕ	6
Remarks	6
Aft Deck	6
Salon	6
Day Head	6
Galley	6
Formal Dining	6
Pilothouse	7
Electronics	7
Stairwells	8
Master Stateroom	8
Master Head	8
VIP Port & Starboard Staterooms	8
VIP Port & Starboard Heads	8
Port Guest Stateroom	9
Port Guest Head	9
Exercise Room/Sauna (Starboard)	9
Skylounge	9
Skylounge Day Head	9
Captain & Crew's Quarters Forward	9

Captain/Crew Head	10
Crew Lounge	10
Storage/Utility/Engineer's Cabin	10
Control Room	10
Electrical System	10
Engine Room	11
Mechanical	11
Plumbing	12
Flybridge	13
Boat Deck	13
Foredeck	13
Stern	13
Safety Equipment	13
Miscellaneous Equipment	13
Comments	14
Exclusions	14
Исключения	14
Отказ от ответственности	14
ФОТОГРАФИИ	15
КОНТАКТЫ	25
Контактная информация	25
Телефоны	25
Время работы	25
Адрес	25

ХАРАКТЕРИСТИКИ

Основная информация

Тип судна: Моторная яхта

Подкатегория: Tri-Deck

Модельный год: 2007

Год постройки: 2006

Страна: United States

Номер регистрации в береговой
охране: 1196538

Верх: Hardtop

Размеры

Длина общая: 130' 0" (39.62m)

Ширина: 26' 0" (7.92m)

Мин. осадка: 6' 7" (2.01m)

Скорость, вместимость и масса

Крейс. скорость: 20 Kts. (23 MPH)

Макс. скорость: 26 Kts. (30 MPH)

Вместимость воды: 1620 Gallons

Вместимость сточного бака: 1360
Gallons

Объем топливного бака: 9900 Gallons

Размещение

Всего кают: 4

Спальные места: 8

Всего ком. состава: 11

Каюта капитана: Да

Койки экипажа: 5

Корпус и палуба

Материал корпуса: Fiberglass

Комплектация корпуса: Modified V-Hull

Дизайнер корпуса: William Garden

Дизайнер интерьера: Westport Design Team

Информация о двигателе

Двигатели: 2

Производитель: MTU

Модель: 12V4000

Тип двигателя: Inboard

Тип топлива: Diesel

ПОДРОБНОЕ ОПИСАНИЕ

Remarks

Elegant Mahogany Interior Study/Lounge Area in Master Stateroom Workout Room/Gym with Sauna/Shower Unique Galley Arrangement with Additional Storage and Bench Seating Hot Tub Forward in Bow Water Tight Door from Crew Area to Guest Staterooms New Carpeting - Salon

Aft Deck

Walk-up buffet with blue pearl granite countertops (3) Large storage areas underneath Teak Decks High gloss teak cap rail Twin lounge chairs with table to starboard Love seat to port High gloss circular table with high gloss/stainless steel pedestals and six (6) matching chairs High gloss teak bar with blue pearl granite countertop 37" Plasma screen TV with Satellite receiver GE refrigerator Ships bell Underwater lights (8 total) Pop-up cleats on swim platform Spiral staircase from Aft Deck down to control room Port & starboard wing doors Starboard boarding gate Compass rose inlay in Aft Deck teak Whirlpool icemaker Beverage storage under bar sink Glass storage cabinet Three (3) matching bar stools Twin Glendenning hose master reels, one in bow & one in stern

Salon

42" Sony Plasma TV with storage cabinet located aft to port Twin matching Salon chairs with table forward Across to starboard is a single lounge chair and large L-shaped sofa with custom table Additional lounge chair forward Satellite receiver Blu Ray Multi disk DVD/CD changer Stereo receiver

Day Head

Framed mirror Bates under mount antique brass sink Headhunter Royal Flush toilet

Galley

Granite countertops Aft starboard upper and lower cabinets Dual stainless steel sinks SubZero 48" refrigerator/freezer New Viking cooktop Forward to port is custom breakfast bar with (3) stools New Dual Gaggenau ovens Across is a large cabinet for pantry storage Custom spring-loaded trash drawer New dishwasher Sharp microwave Hot water dispenser Zephyr Napoli 42 overhead vent Makore inlay flooring in the main deck foyer, galley and day head

Formal Dining

Custom dining table with ten (10) matching chairs Custom port & starboard side buffet storage cabinets Formal Dining Stereo with volume control and speakers from main system (3) Mirrored Lucite storage cases, one case holds provided formal china (13 five-piece settings), the second holds provided formal crystal which includes 12 each of the following: wine, water and champagne glasses; A total of 16 wine, water and champagne glasses are supplied and the third case holds the overflow of additional formal crystal, (13) place settings china, formal flatware and table linens (16) Ea. wineglass, water goblets and champagne flutes with storage provided for 12 each Casual dining: (12) place setting for dining

Pilothouse

Wooden 24" Destroyer type helm station wheel Custom flag storage DDC/MTU engine instrumentation Leather covered dash panels on control console Built-in chart drawer Desk with laptop, PC storage, chair and cabinet storage above Windshield with mesh sun screen cover 6' Weems & Plath clock and barometer Helm leaning post Wing stations - (2) outside Pilothouse (1/port and 1/starboard) Stations include electric engine controls with synchronizer, engine start and stop switches, jog lever, bow thruster control and rudder angle indicator Pilothouse windshield cover Makore inlay flooring in upper deck Pilothouse companionway and day head KVH HD11 Satellite, Tracphone V11-1P Network Maraki MR18 High-Performance WLAN Intelisea P.C. Intelisea RIA Feature view and control shipboard functions remotely via mobile phone iPads in every stateroom

Electronics

Nobeltec Time Zero Navigation 32-Station Telephone System with 18 programmable speaker phones, 4 of which have displays, 17-jack locations with 100' combo CATV/Telephone Shore Cord (8) GLA receivers TV system w/MS-12 VSAT (2) Furuno FAR-2117 radar with 20" LCD monitor in Pilothouse (Both with ARPA) Tellular cellular phone system Furuno FCV-1200 video depth sounder (black box) with 15" LCD monitor in Pilothouse Furuno CH250 GP Sonar Two (2) Furuno GP-90D GPS in Pilothouse Simrad AP50 Autopilot System Security System: Westport proprietary vessel information and control Intellisea system is displayed on 15" LCD monitor in Pilothouse Camera System: Elbex hi-resolution color pan/tilt/zoom cameras located forward of main entrance on the starboard side of main deck, port aft corner of main deck and engine room (Camera system is displayed on shared 15" LCD monitor in Pilothouse) (2) Additional PT2 Cameras (extra one in the Engine Room, one in control room to view pod) All (7) NAV monitors upgraded to Nauticomp displays in Pilothouse (2) Security cameras added to the underside of the FRP clouds (one facing forward the other aft) Security DVR camera recording system (Accel 8) Nobletec Navigation System NavNet 3D System Transas Navisailor 3000 ECS with 20" LCD monitor in Pilothouse (Navigation charts from Seattle, Washington to Fort Lauderdale, Florida) SE AK inside passage WX WORX and OCENS WeatherNet Software Simrad RGC-85 GYRO Compass with interface box Northern Airborne Technology NA-S1520 GPIRB Computer with wall mounted monitor and HP Officejet all-in-one (printer/fax/scanner/copier) network ready SART

NA-SART Furuno Felcom INMARSAT C - 15 standard "C" with roll printer Internet connectivity thru the satellite telephone with a broadband router attached and two wireless remote access points (one forward and one aft) for remote connection throughout the boat AIS (Automatic Identification System) Transponder to be Furuno FA 150 Kahlenberg whistle control Carlisle Finch searchlight 25 MCP Azimut compass display Exalto wiper controls Furuno CH250 GP Sonar Radios: VHF - Two (2) ICOM M-602 radios in Pilothouse (emergency radio battery back-up system, located in Pilothouse) One (1) each Icom M-602 in crew lounge & Galley; (2) handheld VHF Standard HX-260S w/desktop chargers; and SSB-Icom M802 w/tuner Navtex Furuno NX-700-A (1) Loud hailer horn, integrated with VHF Wind, Depth and Speed: B&G Hydra 2000 System with full function display on dash and in crew lounge includes wind and compass options

Stairwells

Wainscot covering in stairwell down to Guest Staterooms and up to Pilothouse

Master Stateroom

Twin reading chairs to left of Master Stateroom entrance King size berth Bunk rails on King berth lifts up on gas springs to storage below Nightstands on both sides of King berth have curved fronts Sony color TV Denon DVD Denon Receiver Satellite Receiver Makore inlay flooring in the lower deck foyer Storage under TV for CD's Vanity/Study area with chair and 3-drawer storage 9-Drawer storage cabinet forward of vanity Owner's walk-in closet on starboard side of stateroom with safe Head entrance on left side of stateroom 6-Drawer cabinet under TV

Master Head

Headhunter Royal Flush toilet Stall shower Linen closet Mirrored wall and (2) mirrored medicine cabinets on either side of sink Ann Sacks Travertine counter Jado Perlrund fixtures Recessed laundry hamper in wall

VIP Port & Starboard Staterooms

King berths with innerspring mattresses Bunk rails lift on gas springs to storage below Hanging lockers Opening portlights with screen Wardrobe lined with aromatic cedar, automatic light, stainless steel closet rod and cedar shelf Sconces Art lights above artwork 3-Drawer nightstands to right and left of king berth Sony color TV Denon DVD 4-Drawer storage under TV Built-in entertainment center

VIP Port & Starboard Heads

Headhunter Royal Flush toilets Granite countertops Linen locker Portlights with blinds Mirrored wall with framed mirror Single sink (4) Storage cabinets Watermark Hampshire fixtures Laundry Stacked washer and dryer Floor to ceiling storage cabinets The foyer Makore flooring has a circle and star inlay (also laundry area)

Port Guest Stateroom

Twin berths with innerspring mattress 3-Drawer moveable night stand Built-in entertainment center Denon DVD Sony TV Opening portlights with screen and privacy cover

Port Guest Head

Granite countertops Headhunter Royal Flush toilet Custom molded fiberglass shower with frameless tempered glass doors Mirrored wall with framed mirror

Exercise Room/Sauna (Starboard)

The Starboard Guest Stateroom was converted into an Exercise Room with the following: Weight bench Elliptical trainer Rowing machine Sony color TV Denon DVD Storage under TV Entertainment center The Starboard Guest Head was converted into a Sauna with the following: Steam shower/sauna with teak floor and molded seat with teak trim Mirrored wall with framed mirror Headhunter Royal Flush toilet Granite countertops THG faucet and bath accessories Stone Forest bronze Zen sink

Skylounge

Aft to port is a leather chair and sofa Custom storage table/cabinet with insert Aft to starboard is a custom enclosed refrigerator with icemaker Glass storage cabinet above refrigerator Forward is a custom game table with seating for (2) Forward to port is the owner's study with custom desk and leather chair Cabinet storage behind Sony Plasma TV Hanging locker Denon DVD Denon Receiver Skylounge TV angled for better viewing

Skylounge Day Head

Headhunter Royal Flush Hydro VAC toilet Bates & Bates sculpted metal sink TGH Gouvernail faucet and fixtures

Captain & Crew's Quarters Forward

Captain's Quarters: Raised panel mahogany through crew area Full size berth Toshiba color TV

Drawers Hanging locker Satellite receiver Bookcase Safe Stereo/DVD player Crew's Quarters (Port & Starboard) (4) Custom upper/lower berths Color TV screens for all crew berths w/satellite TV Hanging lockers Crew dressers CD/DVD players Escape hatch in starboard crew shower Granite surface counters

Captain/Crew Head

Headhunter Royal Flush Hydro VAC Toilets Shower: Fiberglass with Grohe fixtures and sealed shower light; Holcam standard MX series shower doors with polished chrome frame and clear glass (includes escape hatch in starboard crew shower) Kohler Bolero sinks with Grohe Europlus II fixtures Wall mirror and medicine cabinet with built-in mirror above vanity 110V AC recessed room lights Solid surface counters Bath Accessories: Ginger hardware; one each: soap dish, toilet tissue holder, towel bar, towel ring, tumbler holder and robe hook Vanity lighting Amtico commercial vinyl flooring in a hardwood pattern including vinyl base molding

Crew Lounge

New stacked Meile washer & dryer Upholstered settee 23" LCD TV with Satellite Receiver DVD/CD Player Surround Sound Receiver and 1 pair of speakers Handheld Crestron Remote Built-in Sub-Zero refrigerator/freezer Stainless sharp microwave Stainless sink Cherry cabinets Solid surface tops

Storage/Utility/Engineer's Cabin

Double wide commercial stainless steel refrigerator/freezer Engineer's cabin - double berth, desk, hanging locker, and head includes toilet and shower Toshiba color TV 3-Drawer cabinet

Control Room

Air conditioned engineer's control room is located forward of the Engine Room, includes pumps, machinery, main electrical distribution, spare parts storage, work bench and sound door to Engine Room. Additional features include: New 6-drawer tool box with tools Storage cabinets Polar stainless steel sink with strainer and Delta faucet Flooring: White standard profile raised circular design rubber tile Work bench with 4" vise

Electrical System

Vessel Information Control System: Westport's proprietary Vessel Information and Control Intellisea system displayed on 15" LCD monitor in Pilothouse. Items on safety control panel as follows: All thirteen automatic bilge pumps monitored for operation (3) Gray water pumps monitored for operation Gray water tanks alarmed at 50%, 75% and 100% full levels Forward and

aft black water tanks alarmed at 75% and 100% full levels (19) Heat sensors: 4 in crew quarters, captain's quarters and crew lounge; 5 in VIP Stateroom, Guest Staterooms and Laundry; 4 in Engineer's quarters, control, utility and engine room; 3 in Galley, Salon and Master and (3) in Pilothouse and upper lounge (18) smoke alarms: (4) in crew quarters, captain's quarters, and crew lounge; (5) in VIP Stateroom, guest staterooms and laundry; (3) in engineer's stateroom, control and utility; (3) in Galley, Salon and Master Stateroom; Security System: Aft door, control room door, salon door, port & starboard doors, port & starboard pilothouse doors and skylounge door monitored for unauthorized entry Control of AC supply switching from all available sources with Volts, Line 1/Line 2 Amps & KW monitored for each generator Tank Level monitored: (5) fuel tanks and (2) freshwater tanks Flybridge grill lid closed alarm Twin 36 KVA A/Sea power converters (1) Newmar 95 amp / 24V DC battery charger for the 24V DC Ship's System (1) Newmar 70 amp / 12V DC battery charger for the 12V DC Ship's System (1) Newmar 40 amp / 24V DC battery charger for the main engine starting battery banks (1) Newmar 40 amp / 12V DC battery charger for the generator starting battery bank (2) Banks of 8-D, 225 amp hour batteries, wire in series - parallel for starting the main engines (total of 4 batteries) (2) 225 amp hour batteries for generator starting (2) Banks of 8-D, 225 amp hour batteries, wired in series-parallel for the 24V DC Ship's System power, (total of 4 batteries) (2) 225 amp hour batteries, wired in parallel for the 12V DC Ship's System power (3) King heater/defrosters on Pilothouse console (2) 12V DC Pilothouse Chart Lights at navigator's area and captain's desk Riche Globe Masters F-600 Compass in Pilothouse (1) 100 Amp isolation transformers on inlet with boost capability Lighting protection with hull Dyna plate and mast probe All staterooms have 110V receptacles for table lamps; engineer and crew quarters have 24V lights 110V AC Halogen recessed light fixtures 24V DC and 110V AC indirect rope lighting (2) 100 amp, 50-60 cycle shore power converters (180 to 500 VAC input) 24V DC shower lights with white trim Main Distribution panel located in control room, designed to be functional with all necessary circuit breakers and transfer switches and to provide proper operation of AC and DC circuits General Lighting: Vimar receptacles and switching throughout Navigation lights with operation monitored by Intellisea system (Includes bow light, stern light, side lights and anchor light Audio/Video distribution controlled by Crestron system through wireless control (lighting controls with switched and dimmed Crestron automation) Dual 100 amp single phase /three phase shore inlets with Glendenning cable master cord reels starboard stern 100 amp outlet forward starboard side

Engine Room

Additional fluorescent lighting under each engine (9) Additional overhead lights (LED - red, white, blue) Water tight exterior door New Flooring New Marine Air 3-Ton Slimline air handler in engine room

Mechanical

(2) MTU/DDC 12V4000 at 2735 HP with 3-station controls, integrated station selection and shifter control, and synchronizer (3576 Port Hours/3575 Stbd Hours) (2) 65KW Northern Lights generators at 1800 RPM with hydro-elastic mounts and secondary Barry control mounts, sound

shields, water lift mufflers and exhaust water separation (both generators have remote start/stop in Pilothouse) Port generator hours = 8465 & Starboard generator hours = 8240 220V 2 HP Air compressor American Bow Thruster (Bow Thruster) 16"-50 HP hydraulic dual prop with three station controls American Bow Thruster (Stern Thruster) 16"-50HP hydraulic dual prop with three-station controls Fuel-fill pipes port & starboard with vent pipes vented overboard for fast filling 1/4" Minimum 5086 alloy aluminum with dual fills and standard vents, approximate capacity 9,900 Gallons 100-gallon Gas Tank under hatch on swim-step (includes an air operated diaphragm pump and fill nozzle) (2) Detroit-provided SeaPro fuel filters for each main engine and (1) SeaPro 2005-MK for each generator Fuel Monitoring: Sight tubes are located in the control room with readout integrated into the monitoring system Fire Suppression: Engine room has FM200 fire suppression system with manual/automatic controls; also, additional fire suppression is located on the electrical distribution panel 10 Square foot cast urethane foil-shape rudders with 4" Aquamet 22HS 4 1/2" Lube Oil Change System: (1) tank with (2) 178-gallon chambers (one for new oil with deck fill, fill spigot and pneumatic transfer pump and one for waste oil with deck fill and drain spigot; Portable extraction pump with quick disconnects on pump and all engines Tides dripless packing boxes with spare seals (steady rest bearings in aluminum framework 5-Blade Michigan propellers custom wheels Aquamet 22HS 4 1/2" shafts Naiad stabilizer system model #420 with 16 sq. ft. fins, one station Multisea 2000 control, with oil level warning, unloading valve kits and dual pumps with gauge kits (3) Exalto stainless steel pantograph wipers with delay circuits and freshwater wash-downs Jastrom CCO commercial grade power steering (3-stations - Pilothouse and (2) Wing Stations with electric controls) Air Conditioning: Chilled water system with air handlers in Salon, Pilothouse, Galley, All Staterooms, Crew Area and Skylounge New Marine Air Chillers 4 X 6,000 BTU's (13) Remote-mounted, 24V electric bilge pumps with manual/automatic switches and VIC alarms on all pumps (except lower engine room pump) Emergency fixed bilge pump system includes (2) electric pumps with 1 1/2" PVC lines to each major compartment with check valves, strainers and priming system Air handlers (11) additional chill chasers in Guest/Crew Staterooms Quick disconnect diesel fuel capability

Plumbing

Water Tanks are aluminum with epoxy coating and an approximate capacity of 1,620 gallons (electronic monitoring system and sight tube, individual tank fills on starboard side amidship) New (2) Sea Recovery SRC 1400 Watermakers (2,800 gallons per day total) (2) Aqua-Pure water filters Freshwater System: (2) 220V AC pumps and (1) Back-up pressure pump with pressure tank (1) 120-Gallon hot water tank with circulation pump Hot & cold water shower in swim platform area Freshwater wash-down with quick disconnects on Foredeck, Boat Deck & Swim Platform Below Decks Gray water Systems: (3) gray water transfer boxes fitted with screen, supply and discharge lines for all showers and sinks (except main Galley); Transfer boxes have AC sump pump and a 24V DC backup pump with alarm on backup pump) Holding Tanks: (2) composite tanks with inspection hatch; Tanks are electronic monitored and have an approximate capacity of 1,360 gallons (Headhunter MSD treatment with PLC touch screen, and Auto-Chlor treats black & grey water)

Flybridge

Twin mounted MarQuipt adjustable sun lounge chairs Flybridge bar with blue pearl granite countertop Gas grill GE refrigerator GE icemaker (3) Free-standing bar stools Molded seating to port & starboard of flybridge helm Port & starboard high gloss hi/lo table Twin Stidd helm chairs Upper helm area Factory MTU monitoring Rudder angle indicators Bow, stern thruster controls Jog control Simrad AP50 Pilot B&G depth indicator Start/stop switches Throttle controls Searchlight controls Nauticomp 15 console monitor displays radar, sonar, plotter and depth Dual mast domes Kahlenberg air horn (2) Umbrellas Water bib installed next to bar

Boat Deck

Molded settee with twin teak lounge chairs and circular teak table (3) Chaise lounge chairs to starboard Nautical Structures 2000lb. davit features 359 degrees of rotation and wireless control Aft Boat Deck steering station 2-Drawer beverage drawer cabinet (U-Line, refrigerated) with blue pearl granite countertop 18' RIB WB tender with 150HP Yamaha Twin (10) Man life rafts (mounted on rails for easy deployment)

Foredeck

Hot tub with 11kw Heater Twin 270 kg polished stainless steel anchors 400 ft. 5/8 chain for both anchors 5/8 Chrome chain stoppers (2) Maxwell 6000 winches with band brakes (dual chain wheel) and devil claws Anchor chain wash down system

Stern

(2) Maxwell VC 3500 - Upgraded 24V DC capstans (2) Hawse eyes installed on aft corners (2) Bits on swim-step deck (2) Cleats at stern for tenders

Safety Equipment

(18) Coast Guard-Approved Adult Life Preservers with water lights, and six Coast Guard approved child life preservers with water lights Ring Buoys: (2) 24" diameter secured on exterior of vessel w/heaving lines Flare kit Ship's bell per Coast Guard regulations, installed on bow railing over anchor windlass Fire Extinguisher GPIRB Northern Airborne Technology NA-S1520 SART: NA-SART

Miscellaneous Equipment

Emergency Ladder (custom on transom) (1) 1 1/2" X 8' boat hook with chrome -plated hook end Stamoid snap-on covers for: Flybridge settee, tables, seating, shore boats, bow seat and Aft

Deck seating Cushions: Aft Deck settee, bow sun pad, boat deck lounge settee and observation deck settee (Sunbrella fabric with dry-fast foam fill) Spare Parts: DDC/MTU Spare parts kit, Northern Lights spare parts kit, Sea Recover spare parts kit and ships spare kit (2) Charles Smart "Y" 100 Shore Adaptors Wheel puller (built to pull vessel's propellers) Flagstaff: Stern flagstaff rigged with 1/8" nylon line, bow jack staff rigged with 1/8" nylon line; both rigged per standard yacht practice (courtesy flag halyards on mast) Passerelle: Nautical Structures two-section rotating hydraulic with handrail Boarding stair Shore power cords - 50' (2) & 25' (2) Single & Three Phase Pig Tail

Comments

Beautifully maintained, original owner 130 Westport with many unique features; a must see for any Tri-Deck buyer!

Exclusions

Owner's & crew's personal items. A detailed list of exclusions will be provided at the time of sale upon written request.

Исключения

При продаже яхты исключаются личные вещи владельца.

Отказ от ответственности

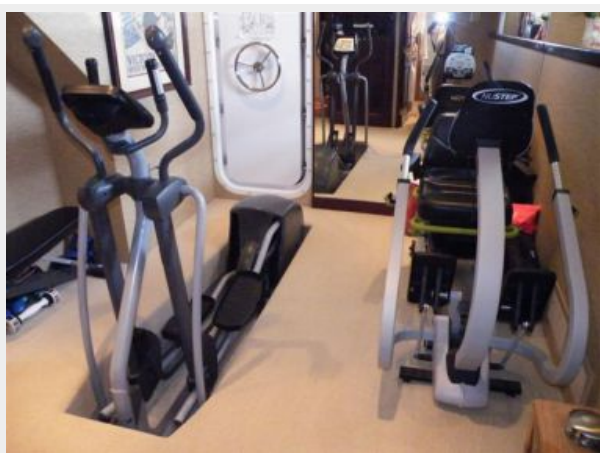
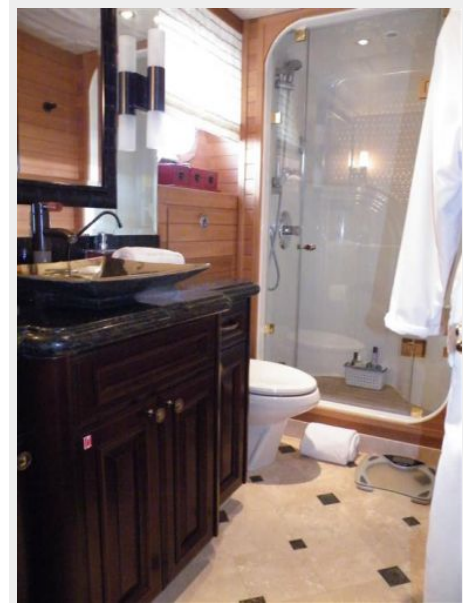
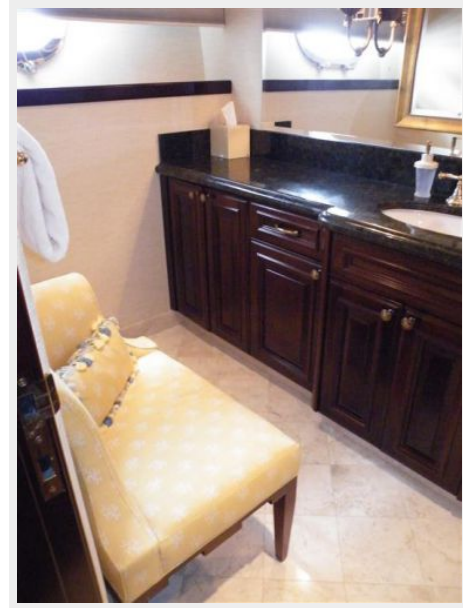
Компания предоставляет описание судна или яхты добросовестно, но не может гарантировать точность этой информации, а также не ручается за техническое состояние. Покупатель должен проинструктировать своих агентов или оценщиков исследовать представленную информацию более подробно, по собственному желанию. Продажа судна или яхты, изменение цены или снятие с продажи будет происходить без предварительного уведомления.

ФОТОГРАФИИ

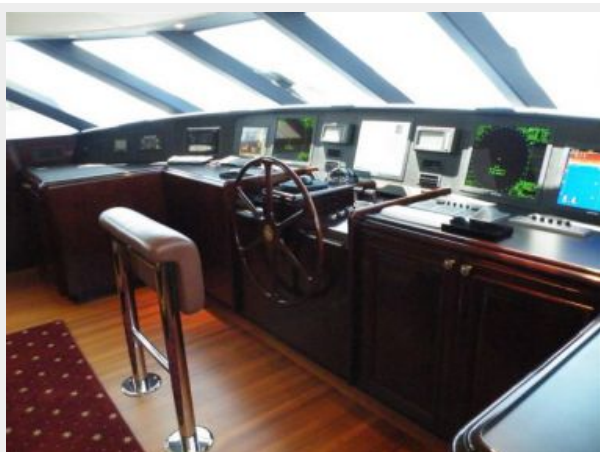


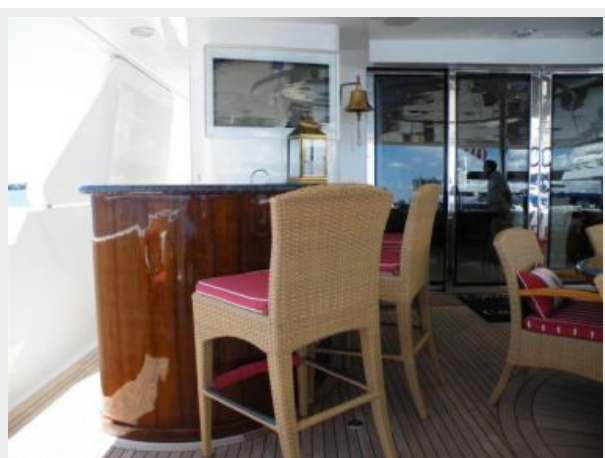




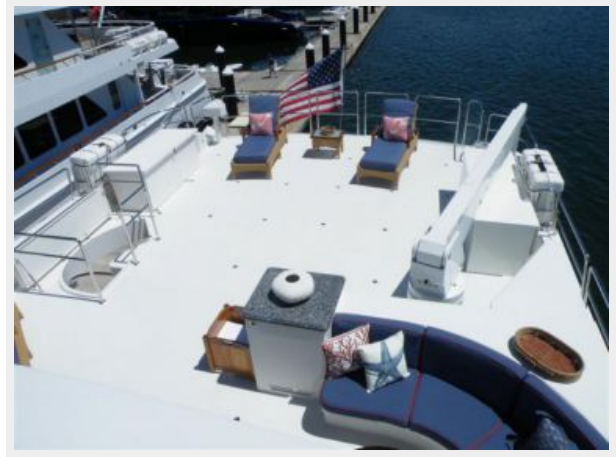














КОНТАКТЫ

Андрей Шестаков (Andrey Shestakov) – ведущий яхтенный брокер отдела продаж яхт и судов компании Shestakov Yacht Sales Inc. Официальный представитель Shestakov Yacht Sales Inc. для русскоговорящих клиентов в центральном офисе компании в Майами/Форт Лодердейл/Флорида/США.

Контактная информация

Email: andrey@shestakovyachtsales.com

Web: shestakovyachtsales.com

Телефоны

Краснодарский край: **+7(918)465-66-44**

США, Майами, Флорида: **+1(954)274-4435**

Время работы

Понедельник – Суббота: **9:00 - 21:00**
EDT

Воскресенье: **Закрито**

Адрес



Harbour Towne Marina, 850 NE 3rd St,
STE 213, Dania, FL 33004