

BABYCAKES — CHRIS CRAFT



Судостроитель: CHRIS CRAFT

Год постройки: 1977

Модель: Моторная яхта

Цена: ЦЕНА ЯХТЫ ПО ЗАПРОСУ

Местонахождение: United States

Длина общая: 74' 0" (22.56m)

Ширина: 18' 3" (5.56m)

Мин. осадка: 5' 10" (1.78m)

Макс. осадка: 6' 0" (1.83m)

Крейс. скорость: 15 Kts. (17 MPH)

Макс. скорость: 18 Kts. (21 MPH)

Купить **BABYCAKES — CHRIS CRAFT** а также выбрать подходящую вам яхту из нашего каталога яхт вам поможет опытный яхтенный брокер Андрей Шестаков. На сегодняшний день компания Shestakov Yacht Sales Inc. имеет большое количество яхт в собственном списке продаж, а также тесно сотрудничает со всеми крупными яхтенными производителями по всему миру.

Для того чтобы купить яхту **BABYCAKES — CHRIS CRAFT** а также проконсультироваться по любому вопросу связанному с покупкой, продажей, чартером яхт позвоните по телефону **+7(918)465-66-44**.

ОГЛАВЛЕНИЕ

ОГЛАВЛЕНИЕ	2
ХАРАКТЕРИСТИКИ	7
Основная информация	7
Размеры	7
Скорость, вместимость и масса	7
Размещение	7
Корпус и палуба	8
Информация о двигателе	8
ПОДРОБНОЕ ОПИСАНИЕ	9
Walkthrough	9
Salon	9
Galley	10
Day Head	10
Pilothouse	10
Companionway	11
Starboard Guest Cabin	11
Starboard Guest Head	11
Port Guest Cabin	11
Port Guest Head	12
Crew Area	12
Master Stateroom	12
Master Head	12
Foredeck	13
Aft Deck	13
Flybridge	13
Flybridge Helm Area	13
Boat Deck	14
Engine Room	14

Lazarette	14
Electrical	14
Remarks	14
Exclusions	15
Исключения	15
Отказ от ответственности	15
ФОТОГРАФИИ	16
Salon Looking Aft	16
Portside Couch	16
Portside Couch	16
Starboard Side Entertainment Center	16
Salon Dining Area	16
Forward of Dining Area	16
Master Stateroom Stairs	17
Breakfast Bar	17
Galley to Port	17
Galley Aft	17
Galley Forward	17
Pantry Aft	17
Pantry Forward	18
Day Head	18
Day Head	18
Pilothouse	18
Helm Seat	18
Helm to Port	18
Helm Center	19
Helm to Starboard	19
Aft Pilothouse	19
Pilothouse DC Panel	19

Pilothouse AC Panel	19
Steps to Flybridge	19
Main Companionway Aft	20
Main Companionway Forward	20
Starboard Guest Cabin Looking Forward	20
Starboard Guest Cabin Looking Aft	20
Starboard Guest Head	20
Port Guest Cabin Looking Forward	20
Port Guest Cabin Looking Aft	21
Port Guest Head	21
Crew Cabin	21
Crew Cabin	21
Crew Cabin	21
Captain's Cabin	21
Crew Galley	22
Crew Head	22
Crew Head	22
Crew Washer	22
Crew Dryer	22
Master Cabin Looking Aft	22
Master Cabin Looking Forward	23
Master Cabin Looking Starboard	23
Master Vanity	23
Master to Port	23
Master Head Looking Forward	23
Master Head	23
Master Head Looking Aft	24
Bow	24
Windlass Detail	24

Portuguese Bridge	24
Portuguese Bridge Seating	24
Portuguese Bridge Storage	24
Midship Electrical Service	25
Teak Toe Rail	25
Aft Deck to Port	25
Aft Deck to Starboard	25
Starboard Side of Flybridge	25
Flybridge Seating	25
Portside of Flybridge	26
Flybridge Seating	26
Bar Seating	26
Flybridge Gas Grill	26
Propane Storage	26
Flybridge Bar Sink	26
Mast	27
Tender	27
Helm Seat	27
Helm	27
Helm	27
Portside Helm	27
Starboard Side Helm	28
View from Helm	28
Engine Room	28
Port Engine	28
Starboard Engine	28
RPM's	28
Watermaker	29
Spare Props in Lazarette	29

Portside Lazarette	29
Starboard Side Lazarette	29
Bow	29
Bow Quarter	29
Alternate Profile	30
Stern Quarter	30
Stern	30
Layout	30
КОНТАКТЫ	31
Контактная информация	31
Телефоны	31
Время работы	31
Адрес	31

ХАРАКТЕРИСТИКИ

Основная информация

Тип судна: Моторная яхта

Подкатегория: Flushdeck

Модельный год: 1977

Год постройки: 1977

Страна: United States

Верх: Bimini Top

Открытая палуба мостика: Да

Размеры

Длина общая: 74' 0" (22.56m)

Ширина: 18' 3" (5.56m)

Мин. осадка: 5' 10" (1.78m)

Макс. осадка: 6' 0" (1.83m)

Скорость, вместимость и масса

Крейс. скорость: 15 Kts. (17 MPH)

Дальность на крейсерской скорости:
475

Макс. скорость: 18 Kts. (21 MPH)

Водоизмещение: 104000 Pounds

Чистый вес: 52 Pounds

Вместимость воды: 650 Gallons

Объем топливного бака: 1900 Gallons

Размещение

Всего кают: 3

Спальные места: 6

Всего ком. состава: 5

Каюта капитана: Да

Каюты экипажа: 1

Койки экипажа: 3

Корпус и палуба

Материал корпуса: Aluminum

Материал палубы: Aluminum

Комплектация корпуса: Modified V-Hull

Дизайнер корпуса: R. Derecktor

Дизайнер экстерьера: Chris Craft

Дизайнер интерьера: Chris Craft

Информация о двигателе

Двигатели: 2

Производитель: Detroit Diesel

Модель: 12V71TI's

Тип двигателя: Inboard

Тип топлива: Diesel

ПОДРОБНОЕ ОПИСАНИЕ

Walkthrough

Entrance to the yacht is from the swim platform and up the swim ladder to the Aft Deck or via the port or starboard Pilothouse doors into the Pilothouse.

The Salon has two sliding teak doors from the 7' Aft Deck into the spacious full beam Salon.

The Salon seats several people with two barrel chairs aft, an L shaped sectional to port, entertainment center to starboard and a six person dining table forward.

Steps to starboard lead below to the Master Cabin and Engine Room.

Next forward is the Galley to port with a four stool bar facing forward from the Salon. The Galely can be enclosed and has a large inventory of home sized appliances.

To starboard is a Day Head. Next forward is a walk in pantry. Furthest forward on the Main Deck is a large Pilothouse with port and starboard wing doors and comfortable steps to the Flybridge.

Below decks to the Accommodations from a stairway just aft of the Pilothouse are the Guest Cabins.

To starboard is a twin lower Guest Cabin with a private Head and stall shower.

To port is an upper/lower Guest Cabin with a private head and shower.

Aft is the forward access to the Engine Room. Forward is the access to the Crew Area. Within in this area to starboard is a double below and single above. To port is a private Captain's Cabin. The common area has a fridge, microwave, icemaker and ladder to the Foredeck.

Furthest forward is a large Head with a stall shower and the yacht's Laundry Center.

The Flybridge is accessed via the Pilothouse. The Helm is centerline. Aft is a bar with a gas grill and refrigeration. Further aft is U shaped seating with storage below.

A 13' Boston Whaler is all the way aft with room for a jet ski or two.

Salon

Entrance to the Salon is through the spit sliding doors from the Aft Deck. Either side of the door are matching upholstered swivel barrel chairs.

To port is a built in end table with the Salon's aft AC system within.

Next forward is an L shaped upholstered sectional couch that matches the chairs.

Large house side windows are covered in wood blinds.

To the portside aft is a built in entertainment center with the equipment behind sliding louvered teak doors. Entertainment equipment includes a Sharp 25" TV/VCR combo, a Bose AM/FM/CD player, Bose cube mini speakers and a Bose subwoofer. Also in the cabinet is the Salon's bar with a sink and bottle storage as well as two storage drawers.

Next forward to starboard is an expandable dining table with six upholstered chairs. Further forward is a banquet below with five teak drawers and a cabinet for dish and silverware storage.

Above are four louvered cabinet doors for additional Galley storage.

To port are the curved and open steps to the private Master Stateroom and four swivel bar stools that face the Galley with a Corian countertop as a breakfast bar. Louvered bi fold doors will separate the breakfast bar from the Galley as needed.

Also in the Salon is a carpeted sole with a carpet runner, wood blinds all around and teak battens on the overhead.

Galley

The Galley is forward and to port of the Salon. Bi fold doors separate the forward facing breakfast bar from the Salon.

Galley equipment includes: Teak sole Full size stainless steel double door refrigerator Corian countertops w/Corian fiddle Stainless steel sink Removable spray faucet fixture (2) Gaggenau two burner cooktops w/stainless steel trim Gaggenau under counter oven w/stainless steel trim Built in Sharp Carousel microwave oven w/stainless steel trim Bosch stainless steel dishwasher GE trash compactor (3) Teak drawers (4) Teak louvered cabinets (1) Corner cabinet (2) Teak tambour door storage lockers Teak mini blinds (11) Overhead mini spots

Pantry: Opposite of Galley to starboard Walk in Teak sole (4) Open shelves Two door teak storage cabinet Wood blinds over side windows Teak louvered entry door

Day Head

The Day Head is opposite the Galley to starboard just aft of the Pantry.

Features include: Sink with Vanity storage below GFCI outlet (2) Overhead lights Microphor toilet Large outboard window with wood mini blinds Teak sole Teak louvered entry door

Pilothouse

Located forward of Galley on Main Deck is the Pilothouse with a varnished teak sole with

located forward of cabin, on main deck, and pilothouse with a varnished teak sole with removable runner. The Pilothouse has sliding port and starboard doors to the side decks. Aft is a two person helm seat with chart drawers and general storage below.

Equipment in the pilot house includes the following: Furuno 48 mile color radar Northstar 800X GPS Gyro-gale pneumatic stabilizers Digital depth finder Raycor vacuum gauges for Fuel filters Robertson AP300DX autopilot American bow thruster system 6" Danforth magnetic compass ACR remote spotlight control Sea 156 VHF Capac corrosion monitor with analog gauge Bilge pump high water alarm panel for (5) bilge pumps Headhunter Tank Sentry waste tank monitor Ample storage under helm. Sea 225 SSB Furuno weather fax Overhead lighting Morse clutch and throttle controls Analog engine gauges Emergency engine air shutoffs Chart light Fuel and water tank gauges Main electric panel

Companionway

Just aft of the Pilothouse are ten carpeted steps leading to the forward Accommodations and Crew Area. To port is a door to the Over Under Staterooms. To starboard is a door to the Twin Lower Berth Stateroom. Between is a linen locker and a hallway to the Crew Cabin forward. Aft is the forward entrance to the Engine Room.

Starboard Guest Cabin

There are twin lower berths forward of the entry door. Each berth has storage below. Between the berths is a three drawer nightstand with a table lamp above. Outboard of the starboard berth is a shelf with sliding storage below and an opening porthole above. At the foot of the outboard berth is a large cedar lined hanging locker. Furthest aft is the entrance to the private Head. Also in this Cabin is overhead lighting and a carpeted sole

Starboard Guest Head

Behind a teak louvered door is the Guest Head with a two door teak vanity, China sink above with a mirrored medicine cabinet further above. The stall shower has a bi fold door, a seat, light, exhaust fan and handheld or wall mounted shower fixture. The toilet is a full size Microphor toilet. There are both overhead and vanity lights above the medicine cabinet.

Port Guest Cabin

Forward to upper and lower bunks on the outboard bulkhead with storage below the lower bunk. Inboard is a four drawer built in teak bureau that also serves as a nightstand. At the foot of the berths is a large two door cedar lined hanging locker. Also in the Cabin is an opening porthole and a carpeted sole.

Port Guest Head

Behind a teak louvered door is the Guest Head with a two door teak vanity, China sink above with a mirrored medicine cabinet further above. The stall shower has a bi fold door, a seat, light, exhaust fan and handheld or wall mounted shower fixture. The toilet is a full size Microphor toilet. There are both overhead and vanity lights above the medicine cabinet.

Crew Area

The Crew Cabin is forward behind a teak louvered door. There is a Common Area with a small Galley Area and a private Captain's Cabin. The Common Area has a double lower bunk to starboard and a single upper bunk which can fold down to create a settee. Forward is a bench and a cedar lined hanging locker. To port is the Galley Area with a Slim Line U Line refrigerator, U Line icemaker, GE turntable microwave, AIWA entertainment system and an eight teak tread ladder to the Foredeck.

The private Captain's Cabin to port has a single berth, a small desk, two drawers below the berth, hanging locker and an opening porthole with a shelf below.

The Crew Head is in the forepeak. There are two louvered doors within the vanity, with a China sink and medicine cabinet above. The stall shower has bi fold door, a light and a handheld or wall mounted shower fixture. The toilet is a Microphor model. Either side of the shower behind bi fold doors is the ship's laundry system. To port is and ASKO dryer, and to starboard is a matching ASKO washer. There is also ample lighting and storage in this compartment.

Master Stateroom

Master Stateroom is entered via its own private stairway from the forward part of the salon via nine carpeted steps. The berth in the Master is king size and situated off the starboard hull side with eight teak drawers below. The headboard opens for storage. Fore and aft of the berth are built in nightstands with two door storage below. Forward of the berth is a large vanity with makeup lighting and four storage drawers. To port is a five drawer bureau. At the foot of the bed is a large mirrored panel. Aft of the bed is a five foot wide cedar lined locker with a lockable gun safe and entrance to the Lazarette. Also in this cabin are two opening portholes and access to the large Master Head.

Master Head

Surprisingly large the master head has a Corian countertop with a Corian fiddle, two China sinks, six cabinets in the vanity below, two cabinets above and a Microphor toilet. The tub shower has a fiberglass inner liner, a sliding two piece door, three opening portholes, handheld wall mounted shower fixture and a tub faucet.

Foredeck

Teak handrails Portuguese bridge with sliding door storage port & starboard Eight step Marquipt Tide Ride boarding ladder Port & starboard shore water inlets (5) Port & (5) starboard spring line cleats Teak toe rail bow to stern Teak handrail with life line & removable cover forward of Portuguese bridge Ideal capstan windlass Deck access hatch to rope chain locker Deck hatch access the Crew Quarters 80 Lb. Danforth anchor Four step Marquipt vertical ladder Bench seat with removable cushions behind Portuguese bridge Varnished teak trim at hardtop boarder Side deck safety hand rails Windshield cover Port & starboard electric inlets for 250 amp shore cords Aluminum nonskid decking

Aft Deck

The Aft Deck is full beam measuring 15' across and 6.5' bow to stern. There are five folding teak varnished chairs and two end tables. The handrail is varnished around the entire perimeter.

The sole is nonskid painted aluminum. There is a deck hatch to the Lazarette below. Overhead are two lights, two stereo speakers and a mounted boat hook. A hinged door to starboard leads to the seven step teak tread ladder to the aluminum swim platform.

Flybridge

(10) Teak steps lead to the Flybridge on the starboard side aft of Pilothouse via a sliding hatch Aluminum radar arch Pipe & canvas hardtop Centered entertainment bar with refrigerator, freezer and icemaker, Fire Magic propane grill, propane storage & (2) swivel bar stools Portside sink cabinet Port & starboard L shaped seating with removable cushions & covers with storage below Walk between hinged door to Boat Deck Teak table with large life raft below Aluminum nonskid decking

Arch Equipment: (2) Furuno 4' scanners Signal Mast with Quartz lights Search lights & air horns (2) Speakers & (4) lights below arch

Flybridge Helm Area

Centerline helm with the following equipment: 6" Danforth magnetic compass Furuno GP37 GPS Navigator Furuno 48 mile color radar Gyro-gale stabilizer controls Morse clutch & throttle controls ABT hydraulic thruster control ACR searchlight control Full VDO engine gauges Datamarine digital depth sounder Pioneer AM/FM/CD stereo Sea 156 VHF Sea 2250 SSB with remote mount Mic Horizon LH10 hailer with remote mount Mic 12V accessory outlet (2) Stereo speakers Helm cover (2) Pompanette swivel helm seats with removable helm cushions & footrests Venturi windscreen

Boat Deck

13' Boston Whaler with Yamaha outboard, helm steering and strong back for lifting Additional chocks for two other tenders Aluminum nonskid decking

Engine Room

Mechanical Engine Room gauges Spare shaft Built in tool chest Shallow well water pump with expansion tank Oil change system with six point service DC incandescent and AC fluorescent lighting Hynautic hydraulic steering system Engine room blowers Walker airseps for crankcase ventilation system Port engine has front mounted hydraulic pump for thruster system Village Marine watermaker Fiquench Halon fire system Galley Maid 30 gallon water heater Y valves for toilets 2.5" Stainless steel prop shafts Packing gland stuffing boxes Engine driven bilge pumps 40 Gallon lube oil storage tank (2) Shore water pressure reducing valves Shower sump pumps 2 to 1 Reduction gears Engine service meters show 1030 hours and these hours are believed to be original and accurate.

Lazarette

The Lazarette is reached via the Master walk in closet or the hatch in the Aft Deck.

Equipment includes: (2) Mounted spare props 7 Step ladder to Aft Deck (4) AC compressors - Galley, Salon aft, Salon forward, Master Cabin DC Lighting AC Lighting Equipment shelf Rudder gear Compressor & air tank w/outlets on stern

Electrical

12V DC systems 115/230V AC systems Sentry 60 amp 12V battery charger Capac corrosion monitor 115V Bilge pump (4) Battery selector switches (2) Acme isolation transformers 7.5 KVA each Main DC panel with 64 breaker protected 12V circuits (2) Analog 12V amp meters 115V Main electrical panel with (57) breaker protected circuits (6) Analog 115V amp meters (1) Analog 230 volt meter (3) Rotary selector switches for shore (1) shore, (2) gen 1/gen 2 (2) 220V Breaker protected circuits (2) Port & (2) starboard 50 amp plug ins just aft of Pilothouse TV/Tel inlets port & starboard 15 KW Onan generator (not in service) 30 KW Onan generator (not in service) (4) New 8D batteries (7/15)

Remarks

BABYCAKES is one of just a few 74' Roamers built. Highly regarded at the time of build, her high bow and flush deck design still look great today. The layout features a huge full beam Salon, Day Head, walk in Pantry and three Staterooms with a separate entrance to the Master

Cabin. A large Crew Area for three people is all the way forward. BABYCAKES would make an excellent live aboard or island vacation home.

Exclusions

While every effort was made to list all pertinent included equipment aboard BABYCAKES, there are some personal belongings aboard. Prospective purchasers should assume any item not specifically mentioned herein will not convey at closing.

Исключения

При продаже яхты исключаются личные вещи владельца.

Отказ от ответственности

Компания предоставляет описание судна или яхты добросовестно, но не может гарантировать точность этой информации, а также не ручается за техническое состояние. Покупатель должен проинструктировать своих агентов или оценщиков исследовать представленную информацию более подробно, по собственному желанию. Продажа судна или яхты, изменение цены или снятие с продажи будет происходить без предварительного уведомления.

ФОТОГРАФИИ

Salon Looking Aft



Portside Couch



Portside Couch



Starboard Side Entertainment Center



Salon Dining Area



Forward of Dining Area



Master Stateroom Stairs



Breakfast Bar



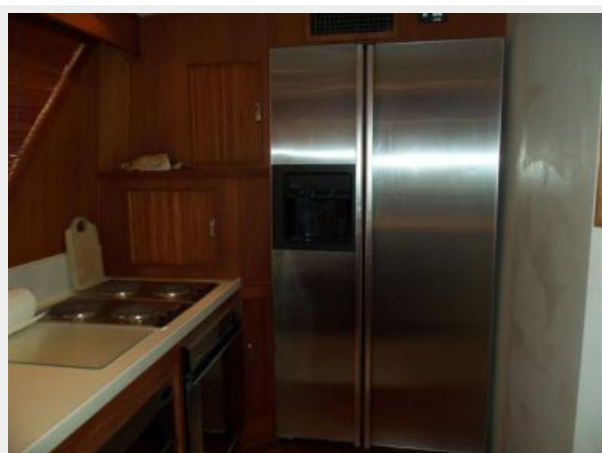
Galley to Port



Galley Aft



Galley Forward



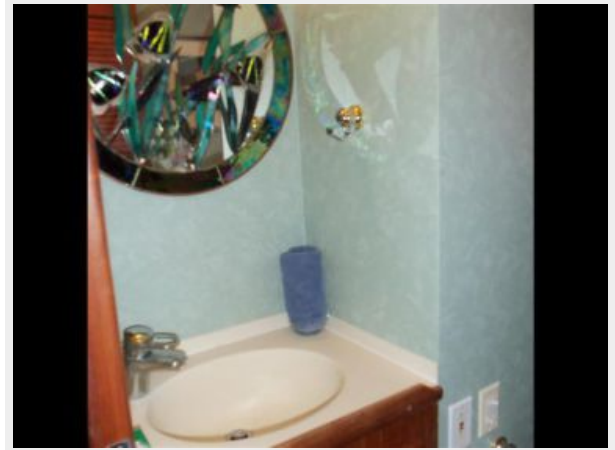
Pantry Aft



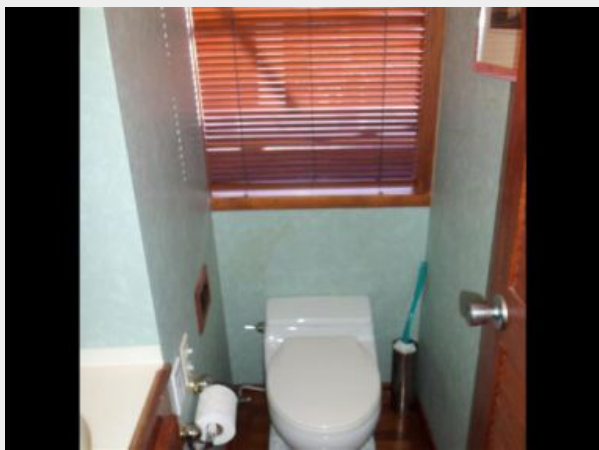
Pantry Forward



Day Head



Day Head



Pilothouse



Helm Seat



Helm to Port



Helm Center



Helm to Starboard



Aft Pilothouse



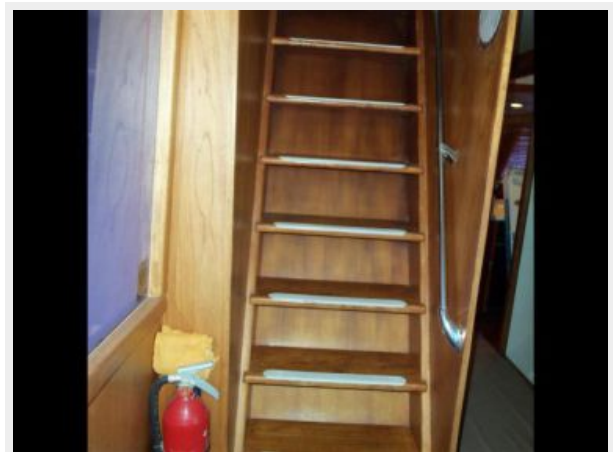
Pilothouse DC Panel



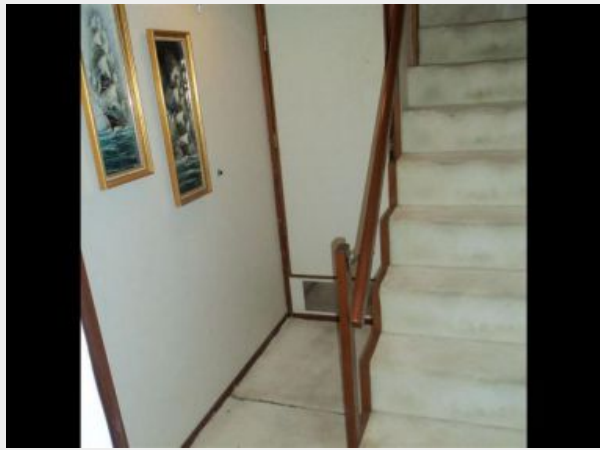
Pilothouse AC Panel



Steps to Flybridge



Main Companionway Aft



Main Companionway Forward



Starboard Guest Cabin Looking Forward



Starboard Guest Cabin Looking Aft



Starboard Guest Head



Port Guest Cabin Looking Forward



Port Guest Cabin Looking Aft



Port Guest Head



Crew Cabin



Crew Cabin



Crew Cabin



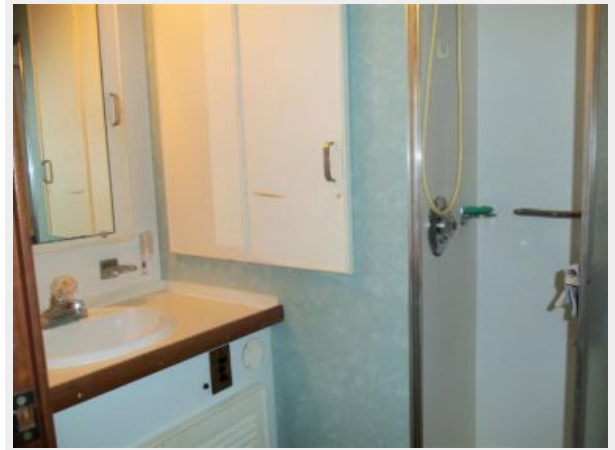
Captain's Cabin



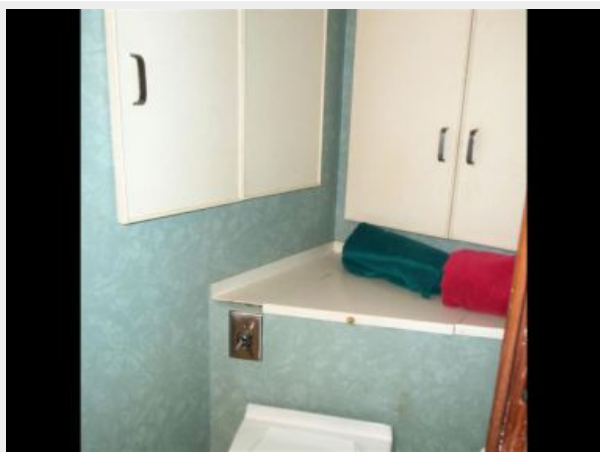
Crew Galley



Crew Head



Crew Head



Crew Washer



Crew Dryer



Master Cabin Looking Aft



Master Cabin Looking Forward



Master Cabin Looking Starboard



Master Vanity



Master to Port



Master Head Looking Forward



Master Head



Master Head Looking Aft



Bow



Windlass Detail



Portuguese Bridge



Portuguese Bridge Seating



Portuguese Bridge Storage



Midship Electrical Service



Teak Toe Rail



Aft Deck to Port



Aft Deck to Starboard



Starboard Side of Flybridge



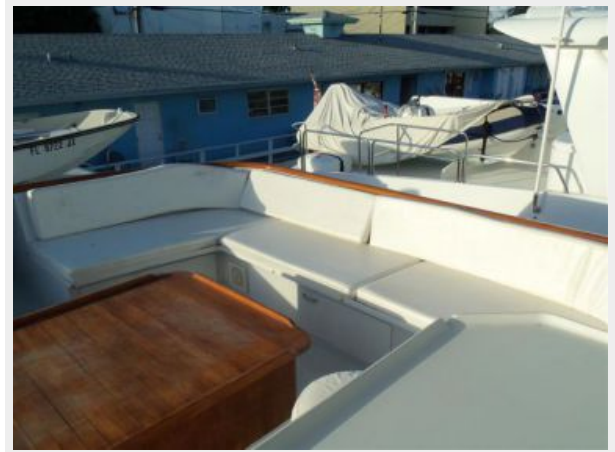
Flybridge Seating



Portside of Flybridge



Flybridge Seating



Bar Seating



Flybridge Gas Grill



Propane Storage



Flybridge Bar Sink



Mast



Tender



Helm Seat



Helm



Helm



Portside Helm



Starboard Side Helm



View from Helm



Engine Room



Port Engine



Starboard Engine



RPM's



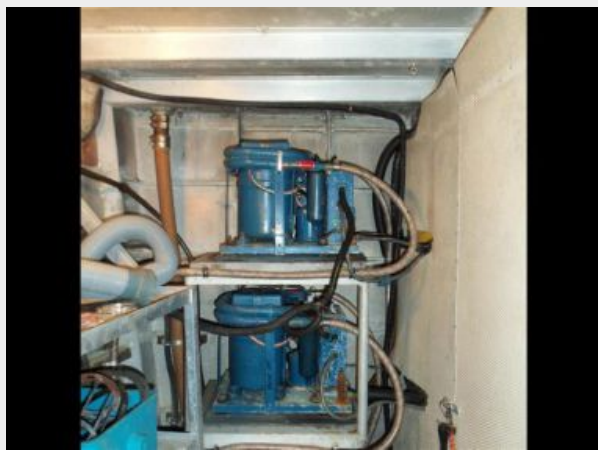
Watermaker



Spare Props in Lazarette



Portside Lazarette



Starboard Side Lazarette



Bow



Bow Quarter



Alternate Profile



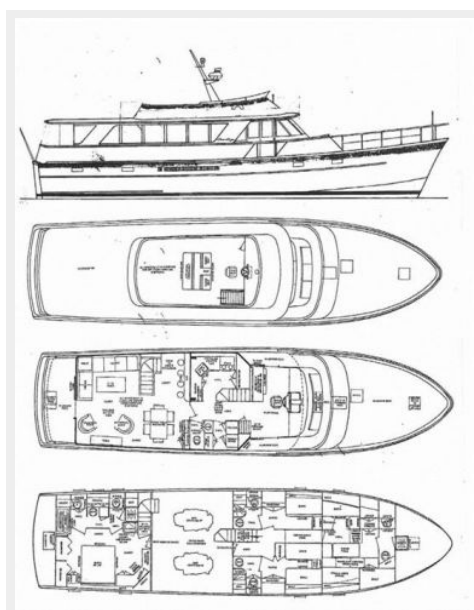
Stern Quarter



Stern



Layout



КОНТАКТЫ

Андрей Шестаков (Andrey Shestakov) – ведущий яхтенный брокер отдела продаж яхт и судов компании Shestakov Yacht Sales Inc. Официальный представитель Shestakov Yacht Sales Inc. для русскоговорящих клиентов в центральном офисе компании в Майами/Форт Лодердейл/Флорида/США.

Контактная информация

Email: andrey@shestakovyachtsales.com

Web: shestakovyachtsales.com

Телефоны

Краснодарский край: **+7(918)465-66-44**

США, Майами, Флорида: **+1(954)274-4435**

Время работы

Понедельник – Суббота: **9:00 - 21:00**
EDT

Воскресенье: **Закрето**

Адрес



Harbour Towne Marina, 850 NE 3rd St,
STE 213, Dania, FL 33004