

ECCENTRIC — HATTERAS



Builder: HATTERAS

Year Built: 2006

Model: Motor Yacht

Price: PRICE ON APPLICATION

Location: United States

LOA: 80' 0" (24.38m)

Beam: 21' 3" (6.48m)

Max Draft: 5' 8" (1.73m)

Our experienced yacht broker, Andrey Shestakov, will help you choose and buy a yacht that best suits your needs **ECCENTRIC — HATTERAS** from our catalogue. Presently, at Shestakov Yacht Sales Inc., we have a wide variety of yachts available on our sale's list. We also work in close contact with all the big yacht manufacturers from all over the world.

If you would like to buy a yacht **ECCENTRIC — HATTERAS** or would like help answering any questions concerning purchasing, selling or chartering a yacht, please call **+1(954)274-4435**

TABLE OF CONTENTS

TABLE OF CONTENTS	2
SPECIFICATIONS	5
Overview	5
Basic Information	5
Dimensions	5
Speed, Capacities and Weight	5
Accommodations	5
Hull and Deck Information	5
Engine Information	6
DETAILED INFORMATION	7
OVERVIEW	7
AFT DECK / SPORT DECK	7
SALON	9
DAY HEAD	10
COUNTRY GALLEY	11
LOWER FORWARD COMPANIONWAY	12
MASTER STATEROOM	12
MASTER HEAD / HIS & HERS	13
GUEST STATEROOM / BOW	14
GUEST HEAD / BOW	15
GUEST STATEROOM / PORT	15
GUEST HEAD / PORT	16
GUEST STATEROOM / STARBOARD	17
GUEST HEAD / STARBOARD	17
CREW QUARTERS / VIP STATEROOM	18
FLYBRIGE	19
ELECTRONICS	20
ELECTRICAL EQUIPMENT	22

ENGINE ROOM	23
Exclusions	24
Disclaimer	24
PHOTOS	25
AFT DECK	25
AFT DECK	25
SALON	25
SALON	25
SALON	25
SALON	25
DINING	26
DINING	26
DAY HEAD	26
GALLEY	26
GALLEY	26
GALLEY	26
GALLEY / DINETTE	27
GALLEY	27
MASTER STATEROOM	27
MASTER STATEROOM	27
MASTER HEAD	27
MASTER HEAD	27
VIP STATEROOM	28
VIP STATEROOM	28
VIP HEAD	28
VIP HEAD	28
CREW HEAD	29
GUEST STATEROOM	29
GUEST STATEROOM	29

GUEST HEAD	29
CREW QUARTERS	30
CAPTAIN'S QUARTERS	30
GUEST HEAD	30
HELM	30
HELM SEAT	31
FLYBRIDGE	31
FLYBRIDGE / BAR	31
FLYBRIDGE	31
FLYBRIDGE / SEATING	31
FLYBRIDGE	31
ENGINE ROOM	32
ENGINE ROOM	32
ENGINE ROOM	32
ENGINE ROOM	32
CONTACTS	33
Contact details	33
Telephones	33
Office hours	33
Address	33

SPECIFICATIONS

Overview

"Eccentric" features the preferred four stateroom layout with country kitchen forward and his/hers head arrangement in the Master Stateroom; as well an air-conditioned open Flybridge. She is powered by twin Caterpillar C32A's @ 1800hp, she has never been chartered and has always been professionally crew-maintained.

Basic Information

Category: Motor Yacht

Model Year: 2006

Year Built: 2006

Country: United States

Fly Bridge: Yes

Dimensions

LOA: 80' 0" (24.38m)

Beam: 21' 3" (6.48m)

Max Draft: 5' 8" (1.73m)

Speed, Capacities and Weight

Displacement: 190000 Pounds

Water Capacity: 326 Gallons

Fuel Capacity: 2858 Gallons

Accommodations

Total Cabins: 4

Total Heads: 5

Hull and Deck Information

Hull Material: Fiberglass

Engine Information

Engines: 2

Manufacturer: Caterpillar

Model: C-32A

Engine Type: Inboard

Fuel Type: Diesel

DETAILED INFORMATION

OVERVIEW

"Eccentric" features the preferred four stateroom layout with country kitchen forward and his/hers head arrangement in the Master Stateroom; as well an air-conditioned open Flybridge. She is powered by twin Caterpillar C32A's @ 1800hp, she has never been chartered and has always been professionally crew maintained. This 2006/2006 model 80' Hatteras Motor Yacht provides a 21'3" beam and a 5'8" draft and is powered by twin Caterpillar C32A's @ 1800 BHP. More importantly she has never been chartered and has always been professionally crew maintained. The interior cabinetry and wood throughout is a high-gloss Cherry. You'll find curved entry doorways with sketch face doors throughout, as well as curved dressers and nightstands which add to the elegance and style found within the vessel. Just inside the salon, an optional sunken bar sits to starboard with a flat screen 42" LCD TV for full viewing anywhere within the salon or dining area. The sunken bar is magnificent in itself as it displays an Onyx Paradise countertop; Scottsman icemaker and refrigerator, stainless steel sink and bottle and glass storage. The salon features comfortable custom built seating, all of which provide additional storage capacity.

Walking forward there is dining for six with the ability to expand for a dinner party of eight. Plenty of storage is found on either side of the dining area. Forward there is an on deck day head and a fully-equipped country galley with island. A separate dining area is forward and open to the galley. Port and starboard entry doors provide easy access to the bow deck and line handling. Below decks you will find a full-beam master stateroom with the popular his and her head layout.

Guest accommodations include the bow stateroom providing for a queen walk-around berth and its own private head. The port stateroom features a queen walk-around and a third guest stateroom provides crisscross berths, each stateroom having access to their own private head. Aft, the private crew quarters provide a walk around queen berth for the captain as well as a separate stateroom featuring over/under berths with a single head.

AFT DECK / SPORT DECK

Aft Deck

Molded-in steps lead up from the swim platform and down from the flybridge to the aft deck. The aft deck provides built-in seating across the stern with Sumbrella cushions and an upgraded AJ Originals high-gloss teak table with a black and gold compass rose inlay for dining. Additional seating is provided around the teak table with two wicker chairs and a shared ottoman. For safety, custom stainless steel gates provide protection to the lower twin stairwells leading to the swim platform on either side of the aft deck seating. Custom built for ease of boarding, side gates were added to the aft deck on both port and starboard sides. This allows for easy side boarding and mounting of the Tide Ride stairs in two locations on both port and starboard sides; one from the sides of the aft deck and another set of gates by the Pantograph doors forward. Accentuating the luxuriousness of the aft deck is the custom teak decking that flows to the steps to the side gates as well as the steps down to the swim platform. For ease of maneuvering, drop down

controls are located to the starboard side aft deck. To port you'll find a door leading from the aft deck to the crew staterooms and engine room with a second access found through the transom bustle door.

- AC duplex outlet
- Dual molded fiberglass steps, port and starboard, to swim platform with lights done with Teak treads UPGRADE
- Molded fiberglass steps to flybridge
- Molded fiberglass decks and steps to flybridge and swim platform done with teak decking UPGRADE
- Curved polished stainless-steel sliding door to salon
- Audio system control, LCD keypad and a pair of Pioneer Marine waterproof loudspeakers
- Hardtop
- Molded lounge with Sunbrella covered Poly-foam cushions and storage underneath, with cover UPGRADE
- High-Gloss Teak accent rail around aft deck seating - UPGRADE
- Door with stairwell to crew's quarters/engine room
- Custom AJ Originals, oversized aft deck high-gloss teak table with cover and custom inlay UPGRADE
- Steps to side deck custom gates, port and starboard, UPGRADE Teak
- Custom Fiberglass side gates, port and Starboard with Marquipt Tide Ride boarding ladder (UPGRADE)

Sport Deck

The sport deck provides access to a hot/cold shower as well as quick-disconnect for salt and freshwater wash-down. Stainless steel rails provide protection while on the swim platform.

- Molded fiberglass with non-skid sole
- Freshwater wash down outlet with hose connection and Hatteras patented quick-disconnect
- Welded and polished 316L removable stainless-steel hoop rails
- Hand-held hot/cold cockpit shower with cover
- Molded-in fiberglass steps with DC lights to aft deck
- (2) Pop-up cleats
- Re-boarding ladder, centerline, swim platform
- Weather-tight Pacific Coast door to crew's quarters and engine room
- Swim platform and steps to aft deck NOTE THAT THIS BOAT WAS MODIFIED AND LOWERED TO BE CLOSER TO THE WATERLINE
- Steps to aft deck done with teak treads - UPGRADE
- Lower Forward Companionway

A stairwell from the salon flows to the master and three guest quarters forward while a separate stairway is conveniently located off of the aft deck for crew quarter and engine room access safely while underway. The forward companionway provides a full-size washer/dryer hidden

behind arched sketch face doors, a full cedar-lined linen locker, and a custom storage alcove was custom-built outboard in the stairwell.

- Carpet
- Whisperwall headliner
- Padded panel wall covering
- Portable fire extinguisher
- Washer/dryer hidden behind sketch face door
- DC light fixtures
- Lights at top of stairs and at bottom of stairs
- Lighted stairway to lower deck
- Arched sketch-faced passage doors with door stops to master and guest staterooms
- Custom storage alcove within stairwell - UPGRADE
- Cedar-lined linen locker

SALON

The salon interior cabinetry is built of genuine cherry wood solid stock and veneers with a high-gloss finish. Curved sliding doors, framed in polished stainless steel, give way to a vast salon which benefits from a 21'3" beam. A sunken wet bar, with three custom barrel chairs is found just inside the salon door and for maximum entertaining a 42" Plasma TV is easily viewable from all areas. The sunken bar showcases a custom Onyx Paradiso top. Neatly tucked into the back bulkhead are a Scottsman refrigerator and separate icemaker. Within this area, you'll find special attention given to bottle and glass storage, as well as a stainless bar sink which is set off with a floor of black galaxy granite 12 x 12' tiles accented with keyed tiles that match the countertop. For comfort, air conditioning flows over hardwood cherry scalloped valances that extend the entire length of the salon/dining area. Below, large windows provide an abundance of natural light and at night you'll find silhouettes that are recessed in soffits and are highlighted with fixed Roman shades to provide a splash of color.

Custom furnishings include a sectional sofa with storage underneath, custom AJ Originals end table with drawers, reclining chair, and twin ottomans with storage underneath that double as coffee tables. Separating the salon from the dining area, you'll find figured cherry columns to port and starboard with cabinetry forward and aft of them providing for additional storage underneath the walk-around side decks. Centerline, a custom dining table for six has the ability to expand and seat eight. Directly forward of the dining area is a china cabinet built specifically to store glasses and china, as well a wine chiller cleverly hidden outboard. To port, a custom pull-out drawer provides access for a printer/fax machine.

Above, the headliner is done in Whisperwall, and features a decorative treatment with wood accents providing further separation for the salon and dining areas. An optional pocket door separates the salon/dining area from the galley.

- Finished wood bulkheads with high-gloss polyester finish in cherry

- Carpeting
- Whisperwall headliner
- Decorative wood accents over the salon and dining area
- Custom designed decorative wood valance with silhouettes in recessed pockets
- Welded and polished curved stainless-steel sliding door to aft deck
- Boston Acoustics 5.1 surround sound speakers
- Sunken Wet bar with bottle and glass storage, with three barrel chairs UPGRADE
- Plexi bottle and glass storage inside cabinets and bar storage
- Entertainment center including 42" plasma TV with Omni-directional antenna, AM/FM, Surround sound stereo receiver with DVD/CD player and One-Touch RF remote control system UPGRADE to Audio Interiors GOLD package
- Carbon Monoxide detector
- Scotsman icemaker and refrigerator
- Fixed frameless windows with tinted safety glass
- Telephone outlet
- AC and DC light fixtures
- AC dimmable lights
- AC duplex outlets
- Custom sofa with storage
- Custom recliner
- Throw pillows
- Air conditioning dispersed through decorative valances, port and starboard
- (3) Chairs surrounding the sunken bar - UPGRADE
- (2) Ottomans with storage - UPGRADE
- AJ Originals custom end table with storage and Lamp - UPGRADE
- Buffet cabinets on port and starboard of dining area
- AJ Originals custom dining table and six custom dining chairs; dining room table expands to seat eight - UPGRADE
- Audio stereo upgrade, Gold Package - UPGRADE
- U-Line wine cooler - forward cabinet - UPGRADE
- Pocket door between salon/galley UPGRADE
- Storage for fax machine, pull out shelf for easy access - UPGRADE

DAY HEAD

As a bonus, a day head is conveniently located to the starboard forward side of the salon, just prior to entering the lower companionway stairwell. All stops were pulled out in its decor with Plexi mirrored ceilings, Papeete Blue granite countertops, floors and custom sink and faucet. Granite countertop, backsplash and floor with keyed tiles UPGRADE. Custom wall-covering - UPGRADE

- Plexi mirror overhead - UPGRADE
- Towel bar

- Headhunter freshwater toilet
- High-end faucet - UPGRADE
- Recirculating fan
- AC and DC light fixtures
- AC duplex outlets
- Air conditioning vent

COUNTRY GALLEY

The country galley is fully functional and was custom designed by years of hands on experience in yachting to accommodate storage throughout. The galley features Caribbean blue granite countertops with a mosaic tile back-splash and a double stainless steel sink with soap dispenser. For ease of maintenance, the flooring is done in a Cherry and Warm Beech Amtico. Appliances include a Sub-Zero full-height refrigerator/freezer with built-in ice and water located on the door front; full-size oven; microwave/convection oven covered by matching cherry door; two Fisher Paykel drawer style dishwashers; garbage disposal and 4-burner ceramic cooktop. For dining, there is a half-moon dinette, located at floor level for easy access, which seats six easily. To port, custom drawers and cabinets were built for additional storage along with a 15" LCD TV for entertaining. For privacy, Duette blinds are located on the forward windows and double to keep this area cool from the sun. To port and starboard, Pantograph doors lead to the outside to the forward sun lounges and for ease of line handling.

- Finished wood bulkheads with high-gloss polyester finish in genuine cherry
- Whisperwall headliner
- Fixed frameless windows with tinted safety glass, window tinting - UPGRADE
- Amtico floor- 3" Cherry and 1/4" Warm Beech
- Stone countertops with stainless sink and storage cabinets made of finished wood
- Tile backsplashes
- Sub-Zero Model 685 upright AC refrigerator with freezer and icemaker, - UPGRADE water and icemaker in door front
- AC 4-burner ceramic cooktop
- Oven located under counter
- Microwave/convection oven hidden by matching cherry cabinetry door
- One-half hp continuous feed garbage disposal
- Telephone outlet
- AC and DC light fixtures
- AC dimmable lights
- AC duplex outlets
- Custom access to storage under dinette and storage forward of dinette - UPGRADE
- Dishwasher - - UPGRADE Fisher Paykel (2) drawers
- Audio system control, LCD keypad and a pair of Boston Acoustics loudspeakers
- Genuine wood inserts on appliance fascia (except refrigerator) to match interior wood finish
- SMX HVAC compartment controlled

- Port and starboard Panagraph doors
- Duette blinds on forward windows
- 15" swivel TV - UPGRADE with Audio Gold Package
- Storage pantry

LOWER FORWARD COMPANIONWAY

A stairwell from the salon flows to the master and three guest quarters forward while a separate stairway is conveniently located off of the aft deck for crew quarter and engine room access safely while underway. The forward companionway provides a full-size washer/dryer hidden behind arched sketch face doors, a full cedar-lined linen locker, and a custom storage alcove was custom-built outboard in the stairwell.

- Carpet
- Whisperwall headliner
- Padded panel wall covering
- Portable fire extinguisher
- Washer/dryer hidden behind sketch face door
- DC light fixtures
- Lights at top of stairs and at bottom of stairs
- Lighted stairway to lower deck
- Arched sketch-faced passage doors with door stops to master and guest staterooms
- Custom storage alcove within stairwell - UPGRADE
- Cedar-lined linen locker

MASTER STATEROOM

The crown jewel of the 80 Motor Yacht is the full-beam master stateroom with six oversized portlights which allows an abundance of natural light to fill this area. The combination of spaciousness, natural light and water level view will stun anyone who enters this magnificent stateroom. The master stateroom features a king-size berth with coil-spring mattress and cedar-lined storage beneath. Arched sketch face doorways and beautiful curved cabinetry dress the area. The owners raised the height of the dressers to allow for additional storage on either side of the stateroom. Additional storage includes his and her cedar-lined lockers as well as dressers and nightstands to provide an abundance of storage. For entertainment an UPGRADED 36" LCD TV with surround sound finishes the area nicely.

For comfort, the air conditioning runs the length of the master stateroom, and flows over hardwood decorative moldings. For privacy you will find Duette blinds hidden behind fixed Roman shades that provide a splash of color.

Popular in the Hatteras 80 Motoryachts is the "his and hers" head with a large shower separating the two vanities. The entire master head is beautifully equipped with custom stone work and

glass tile and is an absolute showpiece. Additional features include:

- Whisperwall padded panel bulkheads
- Finished wood bulkheads with high-gloss polyester finish in cherry
- Carpeting
- Whisperwall headliner
- Upholstered berth base
- Decorative wood valance with fixed Roman shade and Duette blinds
- King-sized berth with upholstered headboard and cedar-lined storage underneath, accessed via pneumatic cylinders
- HMC coil spring mattress, spread, throw pillows, pillows, pillow shams, mattress pad and sheets
- Port and Starboard ventilating portlights with screen and four additional fixed portlights; each hatch is 16" x 28", for a total of six
- Bowed-front nightstands with drawers, plus a pull-out shelf for writing
- Bowed-front built-in dressers, port and starboard, custom designed and raised for maximum storage capacity - UPGRADE
- AM/FM audio access with local DVD/CD changer and a one-touch master universal remote with RF control
- Boston Acoustics loudspeakers
- AC and DC light fixtures
- AC dimmable lights
- AC duplex outlets
- Telephone outlet
- Arched sketch-faced interior passageway door to his and her head
- Arched sketch-faced door, with door stop, to companionway
- Full-length mirror
- Smoke detector
- DC low-level lights
- Safe
- Whisperwall padded panels behind berth
- Twin cedar-lined wardrobes with arched passage doors and automatic lights
- SMX HVAC compartment controlled
- Carbon monoxide detector
- 36" LCD TV - UPGRADE
- Custom headboard with quilted bulkhead highlighted by cherry wood accent strips - UPGRADE

MASTER HEAD / HIS & HERS

The master head features his and hers head with custom stone countertops, backsplash and floors with an oversized glass tiled shower with frameless shower doors on either side.

- Custom granite countertops and backsplash - UPGRADE
- Custom wall coverings - UPGRADE
- Plexi mirror overheads - UPGRADE
- High-gloss cherry storage cabinets
- Mirrors
- Enlarged granite shower with frameless doors on either side
- Headhunter freshwater toilets
- Recirculating fans
- AC and DC light fixtures
- AC duplex outlets
- Air conditioning vents
- Holding tank 3/4 full indicator light

GUEST STATEROOM / BOW

The Bow Stateroom is one of three guest staterooms, each with their own en-suite head. This stateroom provides for a walk-around queen berth with cedar-lined storage below accessed by gas assisted cylinders. Comfort abounds with a custom built coil spring mattress. You'll find plenty of storage in the cedar lined lockers to port and starboard as well as hullside blanket lockers above. The bow head features a custom enlarged shower, not featured on most 80's. Custom stone work abounds.

Additional Features Include:

- Carpeting
- Whisperwall padded panels on hullside
- Whisperwall headliner
- Whisperwall padded bulkheads
- Queen-sized tapered berth with upholstered headboard and cedar-lined storage with drawer underneath accessed via pneumatic cylinders
- Upholstered berth base
- HMC coil spring mattress, spread, throw pillows, pillows, pillow shams, mattress pad and sheets
- Full-length mirror
- Nightstands, port and starboard
- Mirrored forward bulkhead
- Carbon monoxide detector
- Cedar-lined hanging locker with arched door and automatic light, port and starboard
- Screened overhead hatch with privacy cover
- AM/FM audio access with local DVD/CD changer and a one-touch master universal remote with RF control
- AC and DC light fixtures
- AC dimmable lights

- AC duplex outlets
- Sharp 20" LCD TV with MATV outlet
- Overhead storage cabinets, port and starboard
- Smoke detector
- DC low-level lights under berth
- Steps to bow stateroom with DC low-level lights
- Telephone outlet
- Arched sketch-faced passage door
- Polk stereo speakers
- Fluted wood valance with air conditioning dispersed through soffits, port and starboard
- SMX HVAC compartment controlled
- Private head with granite countertops and floors
- Custom head layout with an enlarged shower - UPGRADE

GUEST HEAD / BOW

- Stone flooring
- Custom wall covering - UPGRADE
- Plexi Mirrored ceiling - UPGRADE
- Stone countertop, backsplash and side splash with under-mount sink
- Shower with sliding door
- Towel bars
- Storage cabinetry with mirror doors
- Genuine wood base cabinet with storage and bowed fronts
- Plexi-mirror around upper cabinet
- Linen locker
- Headhunter freshwater toilet
- 120-volt AC air freshener blower
- AC and DC light fixtures
- Air conditioning vent
- DC low level lights under toe kick
- Holding tank 3/4 full indicator light

GUEST STATEROOM / PORT

The port stateroom features a queen walk-around berth with cedar-lined storage underneath. Additional storage can be found within a cedar-lined hanging locker, as well as hull side upper cabinets on the aft and outboard bulkheads, dresser, and nightstands. This stateroom provides private access to a head with tub. For entertaining a 20" LCD TV is located on the forward bulkhead.

The private head features a Head Hunter freshwater head, custom stone work, cherry cabinetry

with custom countertops and under-mount sink. Unique to this boat is the custom stone work, custom baseboards made of glass tiles, as well as full-size tub.

- Padded bulkhead
- Carpeting
- Whisperwall headliner
- Fluted wood valance with fixed Roman shade and Duette blinds, with air conditioning dispersed through soffits
- Upholstered berth base
- HMC coil spring mattress, spread, throw pillows, pillow shams, pillows, mattress pad and sheets
- Ventilating portlight with screen
- Cedar-lined hanging locker with arched door and automatic light
- Nightstand with drawers
- Full-length mirror
- AC and DC light fixtures
- AC dimmable lights
- AC duplex outlets
- AM/FM audio access with local DVD/CD changer and a one-touch master universal remote with RF control
- Telephone outlet
- Private access to head by arched door
- Sharp 20" LCD TV with MATV outlet
- Smoke detector
- Mirrored aft bulkhead - UPGRADE
- Boston Acoustics loudspeakers
- SMX HVAC compartment controlled
- Carbon monoxide detector
- Storage above portlight outboard and on aft bulkhead, in the form of blanket lockers

GUEST HEAD / PORT

- Stone flooring
- Custom wall covering
- Mirrored ceiling - UPGRADE
- Stone countertop, backsplash and side splash with under-mount sink
- Tub with sliding door
- Towel bars
- Storage cabinetry with mirror doors
- Genuine wood base cabinet with storage and bowed fronts
- Plexi-mirror around upper cabinet
- Linen locker
- Headhunter freshwater toilet

- 120-volt AC air freshener blower
- AC and DC light fixtures
- Air conditioning vent
- DC low level lights under toe kick
- Holding tank 3/4 full indicator light

GUEST STATEROOM / STARBOARD

The starboard stateroom features crisscross berths with storage underneath. The berth is fitted with a coil-spring mattress and plush linen treatments. Inboard you'll find a dresser with flat screen TV and forward its own private head. Like the Port Guest Stateroom there is a portlight for ventilation and natural lighting.

- Whisperwall padded bulkheads
- Carpeting
- Whisperwall headliner
- Twin crisscross berths
- Upholstered berth base
- Cedar-lined hanging locker with automatic light
- Full-length mirror
- Audio system control, LCD keypad and a pair of Boston Acoustics loudspeakers
- Sharp 20" LCD TV with MATV outlet
- AC and DC light fixtures
- AC dimmable lights
- AC duplex outlets
- Private access to head
- Smoke detector
- Carbon monoxide detector
- Sketch-faced door to stateroom
- DC low-level lights under berth
- Telephone outlet
- Dresser
- SMX HVAC compartment controlled

GUEST HEAD / STARBOARD

- Stone flooring
- Custom wall covering
- Mirrored ceiling - UPGRADE
- Stone countertop, backsplash and side splash with under-mount sink
- Shower with sliding door
- Towel bars

- Storage cabinetry with mirror doors
- Genuine wood base cabinet with storage and bowed fronts
- Plexi mirror around upper cabinet
- Linen locker
- Headhunter freshwater toilet
- 120-volt AC air freshener blower
- AC and DC light fixtures
- Air conditioning vent
- DC low level lights under toe kick
- Holding tank 3/4 full indicator light

CREW QUARTERS / VIP STATEROOM

- The crew area is accessed via a transom bustle door or through a stairwell off the aft deck. In this private crew area there are two staterooms, one featuring a queen walk-around berth, and a second stateroom providing upper/lower berths and a shared head. The crew area features great storage as well as refrigerator and freezer. Just inside the engine room is another washer/dryer for the crew.
- Amtico floor in companionway - UPGRADE
- Carpeting in the staterooms
- Padded vinyl covering on hullside
- Vinyl headliner
- Queen walk around berth with storage underneath
- Padded berth base
- Poly-foam mattress, spread, pillow, pillow shams, mattress pads and sheets
- Cedar-lined hanging locker with doors and automatic light
- Full-length mirror
- Telephone outlets, port and starboard
- Sharp 15" LCD TV in captain's stateroom, as well as crew
- AM/FM audio access with local DVD/CD changer and a one-touch master universal remote with RF control
- Boston Acoustics loudspeakers
- AC and DC light fixtures
- AC duplex outlets
- Curved stairwell from aft deck
- Watertight door from swim platform
- SMX HVAC compartment controlled
- Carbon monoxide detector
- Crew quarters second stateroom with upper/lower berths, upper berth hinging to a Pullman
- Included in this stateroom is a 15" Sharp TV - UPGRADE
- Safe - UPGRADE

FLYBRIGE

The open flybridge has a large console featuring a full array of electronics and two Pompanette helm chairs. This area has its own air conditioning/heating system, all housed under a custom Pipewelder's hardtop with freshwater sprayers for the windshield. Careful attention was paid to the construction and a four-sided enclosure is used to ensure it is as water-tight as possible for an open bridge. Aft of the helm you'll find a key bar, which houses a separate icemaker and refrigerator with three bar stools on polished stainless bases. Customized twin lounges provide ample seating and dining with three custom cocktail tables with polished stainless steel pedestals.

Just aft of the port & starboard lounge and out from under the Pipewelder's hardtop are cabinets which house an electric grill and a custom stainless steel freezer. At the helm Hatteras' computer monitoring system monitors the ship's systems to include engine measurements, alarms and diagnostic tools, pump bilges and holding tanks, etc. all at the push of a button. A full array of electronics is listed below.

On the boat deck, a Marquipt 1500 lb. fully hydraulic telescoping unit with a boom allows easy access for the toys. For safety you'll also find easy access to the 6-person life raft. Other unique features include a custom cabinet for storage inside the bridge with chart flat for charts, custom hard doors exiting to the boat deck and custom lounge and bridge tables as well as carpeting and Sumbrella upholstery. The supports for the Pipewelder's hardtop are inside the enclosure, which provides for clean exterior lines.

Computer controlled Ethernet monitoring system with LCD touch screen display providing visual and audible signals for engines, gears, generators, high bilge water, fire warning in engine compartment, fire extinguisher discharge in engine compartment, AC power loss, smoke detectors, all tank level indication, low battery voltage, alternator failure, battery charger failure, bilge pump control and run indication, holding tank pump control and run indication, and carbon monoxide detectors. A history log is maintained for critical alarms and trends may be set up to view various parameters with respect to time. Additional monitoring points may be added to the system economically and easily.

- 104-square-foot boat deck
- Molded fiberglass bridge
- Under the overhang of the custom Pipewelder's hardtop, with custom light soffit, and high pressure water rinse on the forward bridge enclosure. - UPGRADE
- Pipewelder's hardtop with enclosure and molded hatch to access the top of the hardtop and for ventilation - UPGRADE
- Freshwater sprayers for flybridge windshield - UPGRADE
- EC2CY 4-sided enclosure - UPGRADE
- Welded and polished 316L stainless steel rails and stanchions
- Custom L-shaped lounge with storage, port and starboard - UPGRADE
- (3) Solid surface tables with stainless-steel pedestals - UPGRADE
- (2) Pompanette helm chairs with covers - UPGRADE

- Forward control station with all necessary switches, single-lever electric clutch and throttle controls, synchronizer, back-up controls, power assisted steering, compass and electronic console
- Key bar with sink, refrigerator, icemaker and storage
- AM FM stereo with radio access with local DVD/CD changer and a One-Touch Master universal remote with RF control
- 20" LCD TV
- Canvas covers for all seating
- Teak Sole (Flex Teak - Engineered product) - UPGRADE
- Fiberglass molded storage cabinet located inside and to starboard of lounge, hinged on top with access underneath for charts - UPGRADE
- Air conditioning - UPGRADE
- (3) Bar stools with stainless steel pedestals - UPGRADE
- Bridge and exterior cushions on boat deck - UPGRADED to Sumbrella with throw pillows
- (2) Hinged doors leading to boat deck, between two lounges - UPGRADE
- Fiberglass cabinet with electrical double grill, boat deck
- Telephone outlet
- Fiberglass cabinet with stainless steel freezer on boat deck - UPGRADE
- Lounge seat lids are hinged for easy access to storage - UPGRADE

ELECTRONICS

- Package supplied and installed at the Hatteras factory utilizing High Seas Technology
- Furuno, X-Band Black Box Radar with keyboard and 6'5" streamlined open array antenna
- Furuno, Navnet VX2 radar/chart plotter with 4' open array antenna and 15" Sunlight Display
- Northstar 972 GPS plotter, 15" color display
- Simrad Autopilot
- Simrad IS15 Digital Depth/Temp
- Icom 602 VHF with digital antenna and Rupp mount
- Icom 602 VHF/Hailer (2)
- Panasonic phone system, multi-line and speaker phone
- VSAT Internet/SAT Phone - UPGRADE
- SeaTel SAT TV System
- Elbex color indoor camera
- (4) Underwater lights
- Hardware and miscellaneous

This boat is designed with longevity in mind as all stanchions and cleats are through bolted to aluminum backing plates that are encapsulated into solid fiberglass sections of the superstructure. Molded fiberglass UL approved tanks are placed between the stringers and glassed in place. All fuel tanks are constructed with a fire-retardant resin, and exposed surfaces are coated with a fire-retardant intumescent paint. Bulkheads and stringers are fully tabbed into the hull itself and the stringer system is built of a closed cell polyurethane foam to provide for stiff

longitudinal support with no fear of water intrusion. Unique to this boat, is the storage shelves that were added into the bilges of the boat for extended trips.

- Finished wood bulkheads with high-gloss polyester finish in genuine cherry
- All hardware chrome on brass or welded and polished stainless-steel
- Swim platform with welded and polished stainless-steel re-boarding ladder - UPGRADE
- Welded and polished stainless-steel anchor chute and roller
- 110-pound plow anchor, anchor line and deck hawse pipe
- Windlass, 4,000lb. hydraulic with 300 feet of stainless steel chain with deck-mounted control switches
- Integrated hydraulic digital 35 hp thruster/stabilizer system with 7.5-square-foot fins
- (6) Polished stainless-steel spring-line cleats with chafing strips, through-bolted in aluminum backing plates
- Bow and stern polished stainless-steel cleats, through-bolted in aluminum backing plates
- Polished 1 1/4 stainless-steel rails on bow, side-deck and flybridge, drilled and tapped in aluminum backing plates
- (2) Remote controlled searchlights
- Fog bell
- Dual air horns
- Zincs on rudders and shafts
- Bow and stern staffs with pennant and ensign
- Black braided mooring lines
- Alloy 22 high-strength propeller shafts, 4"
- Manganese bronze dripless shaft and rudder seals
- Life jackets & life ring
- Portable "drychem" and (13) fire extinguishers, U.L. approved type in compliance with United States Coast Guard and ABYC standards
- Stainless-steel trim tabs
- Manganese bronze struts and Alloy 22 high-strength shaft with zincs
- Stainless-steel rudders
- 8-Blade propellers, Nibral high performance
- Prop removal/installation tool
- Central vacuum with five outlets
- MarQuipt 1500lb., fully hydraulic
- Holding tank with sewage pump and overboard discharge
- Freshwater wash down, bow, with Hatteras patented quick disconnect
- Black fenders
- (2) Pop-up cleats on swim platform
- Fender tracks
- Deck plates for fuel and water fills and waste pump-out
- Heavy-duty bronze engine couplings
- Engine and generator exhaust exits through hull side near transom
- Generator exhaust, water separator
- Rope locker storage hatch, bow deck

- 1400 GPD Sea Recovery watermaker
- Deep storage port and starboard, bow trunk
- Pacific Coast door to crew's quarters from sport deck
- Wireless remote control for Cablemaster
- Custom double radar mast - UPGRADE
- Removable deck hatch storage in bow and VIP areas for dry good storage, an extra added value that you have to see to believe - UPGRADE

ELECTRICAL EQUIPMENT

Hatteras is known for their attention to detail, and wiring is one of their strongest points. All wiring is tin-coated and sealed in an insulation jacket. Wiring harnesses are tie-wrapped every 6 inches and secured every 18 inches with easy access. Wiring is color-coded and numbered at both terminal ends and is well documented in the owner's manual. In addition to meticulous detail in the wiring runs, this boat has a chilled water air conditioning system that utilizes less electricity as well. A custom option this boat features is an additional 100 amp inlet making plugging in a breeze. This boat also sports underwater lights.

- Water heaters, (1) 30-gallon and (1) 20-gallon midship, and (1) 6-gallon aft for crew
- (2) 24-volt banks of heavy-duty, 12-volt marine batteries (4) mounted in fire-retardant fiberglass boxes
- U.L. 1426 listed boat cable, tin-coated with insulation
- Gel/lead acid compatible 240-volt automatic programmable battery charger, 50/60Hz
- Automatic battery paralleling system with switch at control console
- 100/Amp & 50/Amp cords on Glendenning transformer connected retractable shore cords covered by hatch, forward, with wireless remote control for Cablemaster, as well as an additional 100 amp - UPGRADE
- AC and DC light fixtures
- Battery control panels with fuses and isolation switches
- DC electronics panels with magnetic circuit breakers
- AC distribution panels with magnetic circuit breakers
- AC switching panel with source selector switches, digital volt meter, ammeter, frequency meter, generator start/stop controls, voltage boost tap switch and interlock selector breakers

Computer controlled Ethernet monitoring system with LCD touch screen display providing visual and audible signals for engines, gears, generators, high bilge water, fire warning in engine compartment, fire extinguisher discharge in engine compartment, AC power loss, smoke detectors, all tank level indication, low battery voltage, alternator failure, battery charger failure, bilge pump control and run indication, holding tank pump control and run indication, and carbon monoxide detectors. A history log is maintained for critical alarms and trends may be set up to view various parameters with respect to time. Additional monitoring points may be added to the system economically and easily.

- Navigation lights, U.L. certified to United States Coast Guard and ABYC specifications

- Ground fault protection on AC receptacles and lighting circuits
- Chilled water air conditioning with reverse-cycle heating, with soft starting AC compressors, automatically staged and individually controlled with SMX controls in each compartment
- Telephone/CATV inlet, one each, forward
- Telephone and CATV shoreline cord, one each
- TV antenna, Omni-directional
- Underwater lights

ENGINE ROOM

This area provides easy access to equipment, this area is painted with high-gloss Urethane paint for easy cleaning. A forced air induction system draws cooling air for the engine room from underneath the flybridge reducing saltwater intrusion into the engine room. For added storage, racks were custom-built overhead of the port and stbd engines, as well as a custom tool box on the forward bulkhead. For additional capacity and for the crew, a Bosch washer/dryer was included inside the engine room.

- Water manifold blocks with centralized shut-off valve for sinks and showers
- Protruded fiberglass rudder shelf with stainless-steel rudder tie bar
- AC fluorescent lights
- DC lights & DC exhaust blower
- Twin diesel, freshwater-cooled main engines with electrically controlled marine gears, neutral interlocks, exhaust silencers, engine hour meters, alternators, fuel filters and seawater strainers
- FM200 fixed fire extinguishing system for engine/generator compartment with automatic and remote manual controls plus audible and visual discharge signals
- (2) AC ventilation fans
- (2) 27.5kW Freshwater-cooled Electronic Quiet Diesel Onan generators with shock mounts, sound enclosure, remote start, seawater strainer, fuel/water separator, hour meter, and water lift muffler
- Variable speed air induction fans with duct to flybridge for engine combustion air, (2) 21" vane axial fan pressure and temperature controlled Polyethylene water lines
- Electric fuel transfer system with filtration and dry tank protection for pump (1)
- Freshwater fill hose for engines and generator
- AC compressed air system with airline and regulator
- Dockside water inlets with pressure regulating valve, automatic dockside tank fill and Hatteras patented quick-disconnect
- 24-volt DC bilge and sump pumps, six at 3700 gph, one at 2200 gph with heavy duty float switches and protective guards
- Bronze/chrome ball valves through-bolted in solid fiberglass on all underwater through-hull fittings with electrical bonding throughout
- 230-volt AC freshwater pump, with pressure tanks located in strategic areas and central charcoal filter with back-flush capabilities

- U.L. Marine-listed fiberglass fuel tanks constructed with fire-retardant resin and bronze fittings, and coated with fire-retardant paint
- Fiberglass water tanks, constructed with bronze fittings and materials which comply with the requirements of Title 21 for food and drugs.
- Sewage holding tank with 230-volt AC sewage pump, plumbed for dockside pump-out with 3/4 full display and alarm as part of systems monitor
- 110-volt AC oil changing system for engines, gens & gears with Hatteras patented quick-disconnect
- U.L. Marine-listed fuel filter/water separator, generators & duplex fuel filters/water separators with bypass manifold, engines and
- Sealed shower sump, two each
- U.L. Marine-listed electric fuel priming pumps, 24-volt DC, engines
- Welded and polished 316L stainless-steel overhead grab rails
- AC distribution panels
- DC distribution panels
- Painted polyurethane engine room and bilges
- United States Coast Guard type A1 U.L. Marine-listed fuel lines
- Discharge sea chests, stainless-steel steering tie bar with pivoting self-aligning ball joint connection at all cylinder and tie bar connections
- Insulation in deck
- Gray water tanks, (2) plumbed, 126-gallons each, with 230-volt AC sewage pump, plumbed for dockside pump-out with 3/4 full display and alarm as part of systems monitor
- Air conditioning compressors, chilled water, (2) four ton
- Bosch washer/dryer - UPGRADE
- Overhead storage cabinets above engine room, port and starboard - UPGRADE
- Work bench with tool chest - UPGRADE

Exclusions

Owner's personal belongings.

Disclaimer

The Company offers the details of this vessel or yacht in good faith but cannot guarantee or warrant the accuracy of this information nor warrant the condition of the vessel. A buyer should instruct his representatives, agents, or his surveyors, to investigate such details as the buyer desires validated. This vessel or yacht is offered subject to prior sale, price change, or withdrawal without notice.

PHOTOS

AFT DECK



AFT DECK



SALON



SALON



SALON



SALON



DINING



DINING



DAY HEAD



GALLEY



GALLEY



GALLEY



GALLEY / DINETTE



GALLEY



MASTER STATEROOM



MASTER STATEROOM



MASTER HEAD



MASTER HEAD



VIP STATEROOM



VIP STATEROOM



VIP HEAD



VIP HEAD



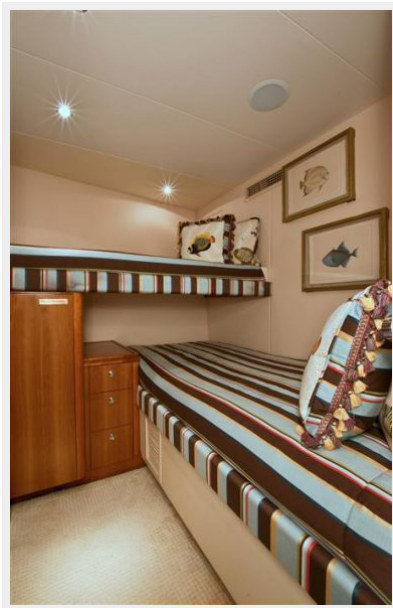
GUEST STATEROOM



CREW HEAD



GUEST STATEROOM



GUEST HEAD



CAPTAIN'S QUARTERS



CREW QUARTERS



GUEST HEAD



HELM



HELM SEAT



FLYBRIDGE



FLYBRIDGE / BAR



FLYBRIDGE



FLYBRIDGE / SEATING



FLYBRIDGE



ENGINE ROOM



ENGINE ROOM



ENGINE ROOM



ENGINE ROOM



CONTACTS

Andrey Shestakov, leading yacht broker of the sales department of Shestakov Yacht Sales Inc. Shestakov Yacht Sales Inc., the official representative of the Miami/Fort Lauderdale FL headquarters.

Contact details

Email: andrey@shestakovyachtsales.com

Web: shestakovyachtsales.com/en/

Telephones

USA: +1(954)274-4435

Office hours

Monday – Saturday: **9:00 - 21:00** EDT

Sunday: **closed**

Address



Harbour Towne Marina, 850 NE 3rd St,
STE 213, Dania, FL 33004