

SAUDADE — TAYANA



Судостроитель: TAYANA

Год постройки: 2005

Модель: Крейсерская яхта

Цена: **ЦЕНА ЯХТЫ ПО ЗАПРОСУ**

Местонахождение: United States

Длина общая: 48' 2" (14.68m)

Ширина: 14' 6" (4.42m)

Мин. осадка: 6' 0" (1.83m)

Купить **Saudade — TAYANA** а также выбрать подходящую вам яхту из нашего каталога яхт вам поможет опытный яхтенный брокер Андрей Шестаков. На сегодняшний день компания **Shestakov Yacht Sales Inc.** имеет большое количество яхт в собственном списке продаж, а также тесно сотрудничает со всеми крупными яхтенными производителями по всему миру.

Для того чтобы купить яхту **Saudade — TAYANA** а также проконсультироваться по любому вопросу связанному с покупкой, продажей, чартером яхт позвоните по телефону **+7(918)465-66-44**.

ОГЛАВЛЕНИЕ

ОГЛАВЛЕНИЕ	2
ХАРАКТЕРИСТИКИ	4
Обзор	4
Основная информация	4
Размеры	4
Скорость, вместимость и масса	4
Размещение	4
Корпус и палуба	5
Информация о двигателе	5
ПОДРОБНОЕ ОПИСАНИЕ	6
Accommodations and Layout	6
Forward Head	6
Forward Stateroom	6
Saloon	6
Master Stateroom	6
Master Head	7
Galley	7
Sails and Rigging	7
Deck and Hardware	7
Electronics	8
Electrical Equipment	8
Engine and Machinery	8
Исключения	8
Отказ от ответственности	9
ФОТОГРАФИИ	10
Тайана 48 DS Aft Deck	10
Тайана 48 DS Cockpit	10
Тайана 48 DS Forward Deck	10

Tayana 48 DS Saloon	10
Tayana 48 DS Master Head	11
Tayana 48 DS Master Head	11
Tayana 48 DS Master Berth	11
Tayana 48 DS Galley	11
Tayana 48 DS Galley	11
Tayana 48 DS Galley	11
Tayana 48 DS Galley/Dinette	12
Tayana 48 DS Engine Room	12
Tayana 48 DS Engine Room	12
Tayana 48 DS Engine Room	12
Tayana 48 DS Dinette	12
Tayana 48 DS Nav Station	12
Tayana 48 DS Forward Stateroom	13
Tayana 48 DS Forward Stateroom	13
Tayana 48 DS Forward Head	13
Tayana 48 DS Forward Head	13
КОНТАКТЫ	14
Контактная информация	14
Телефоны	14
Время работы	14
Адрес	14

ХАРАКТЕРИСТИКИ

Обзор

For long range cruising you cannot top the Tayana 48DS. This solid yacht designed by Robert Perry has many options including bow thruster, Liesurefurl boom, Grunert refrigeration and freezer, electric winches, roller furling on both foresails, eisenglass enclosed cockpit, air conditioning, all LED lights, Gori folding prop, large house battery capacity, AIS and much much more. She is clean and really well maintained.

Основная информация

Тип судна: Крейсерская яхта	Подкатегория: Палубный парусник
Модельный год: 2005	Год постройки: 2005
Страна: United States	Верх: Dodger

Размеры

Длина общая: 48' 2" (14.68m)	Длина по ватерлинии: 40' 3" (12.27m)
Ширина: 14' 6" (4.42m)	Мин. осадка: 6' 0" (1.83m)

Скорость, вместимость и масса

Водоизмещение: 35000 Pounds	Вместимость воды: 250 Gallons
Вместимость сточного бака: 30 Gallons	Объем топливного бака: 150 Gallons

Размещение

Всего кают: 2	Всего коек: 2
Спальные места: 4	Всего ком. состава: 2

Корпус и палуба

Материал корпуса: Fiberglass

Информация о двигателе

Двигатели: 1

Производитель: Yanmar

Модель: 4JH4-TE

Тип двигателя: Inboard

Тип топлива: Diesel

ПОДРОБНОЕ ОПИСАНИЕ

Accommodations and Layout

This two stateroom boat features a head with a fully enclosed shower in the forepeak. Behind the head moving aft is a large guest stateroom with a double size bunk to port with generous storage beneath the bunk and on the starboard side of the cabin. Continuing aft is the open saloon with a hi/lo table with "U" shaped seating to port and a "L" shaped settee to starboard. Starboard and aft of the settee is the large navigation table. To port aft of the table is the well appointed galley. Continuing aft from the galley you access the full beam master stateroom. Accessed from the forward starboard side of the master stateroom you will find the large master head and separate shower.

Forward Head

• Hella turbo fan • Raritan manual head • Corain counter tops • Stainless steel sink with hot and cold running water • Separate stall shower with seat and storage locker • Hanging locker • Access to chain locker • Grohe fixtures in shower and sink • 120 Volt AC power outlet • Storage lockers • Overhead hatch with screen • Overhead LED light

Forward Stateroom

• Queen size pullman berth • Hanging locker • Multiple storage cabinets and drawers • Large overhead hatch with screen • 4 opening stainless steel opening portholes with screens • 120 Volt AC power outlet • Hella turbo fan • 2 LED reading lights • 4 LED overhead lights

Saloon

• Weems & Plath radio controlled brass ship's clock • Weems & Plath brass barometer • 2 Hella turbo fans • Hi/Lo dining table (converts to additional berth) • "U" shaped seating around dining table • "L" shaped settee • Foot stool with storage • Sony flat screen HD TV • Boston Acoustic speakers • 2 opening forward windows • Majestic DVD 5700 player with SD card reader and USB input • Pioneer CD player/radio with MP3 input • LED overhead lights • LED reading lights • Wine glass rack

Master Stateroom

• Center-line queen berth • 2 hanging lockers • LG flat screen TV • Sony DVD player • 2 LED reading lights • 2 Hella turbo fans • 2 Dorade vents • 4 LED overhead lights • Overhead hatch with screen • 4 Stainless steel opening portholes with screens • 2 dressing seats with storage beneath • Many drawers and storage • Access to steering quadrant

Master Head

• Raritan manual head • Separate shower with seat with storage • Stainless steel sink with hot and cold running water • Grohe fixtures • Hella turbo fan • Corian counter top

Galley

Located to port of the companionway ladder the galley is set up for serious offshore cruising. This well equipped galley has lots of counter space and great leaning surfaces for the cook in a seaway. • Force 10 three burner gimbaled gas stove and oven • Grunert 110AC refrigerator and freezer • Seaward electric solenoid gas valve • Both refrigerator and freezer have counter top and front door access • LG Microwave oven with toaster • Hot and cold pressure water system with accumulator tank • Double stainless steel sinks with Grohe faucet • Wood cutting board covers for double sink • Corian counter tops • Built in trash basket on back side of engine room door • 2 Stainless steel opening portholes with screens • Grunert remote thermometers for refrigerator and freezer • 12 volt DC outlet • 110V AC outlets • Exhaust fan • Storage drawers and cabinets

Sails and Rigging

• Leisurefurl in boom furling system • UK full batten Mainsail • UK Staysail • UK Jib 105 % • Pro Furl furlers for staysail & jib • Selden clear anodized mast • Running back stays • Lewmar CEST 54 electric primaries • Lewmar CST 44 secondaries • Lewmar CEST 44 electric cabin top winch for halyards, main sheet, & Leisure Furl system • Lewmar CST 40 on mast • Garhauer SS rigid boom vang • All lines led to cockpit thru Lewmar sheet stoppers • Spinnaker pole Sail Area IJPE : 1064.00 sq ft I : 62.00 ft J : 18.67 ft P : 55.50 ft E : 17.50 ft Working Sail Area : 1048.00 sq ft

Deck and Hardware

Aft Deck • Fiberglass storage box mounted on aft deck • Lazerette located aft starboard corner • Propane locker located aft port corner (2 20# Propane Tanks) • Seats built into aft life rail on each aft corner • Outboard motor bracket on aft port side rail • Mast with radar dome & flood lights • Swim ladder • Transom shower • 2 Dorade vents (for master stateroom) • Flag pole mount • Emergency tiller access Center Cockpit • Full bimini cover with dodger and eisenglass sides • Whitlock pedestal with fold down table and instrument pod • Whitlock engine control • Pioneer Speakers • Raymarine ST8001 Autohelm • Icom Commandmic II VHF • Plastimo Compass • Yanmar engine instruments • Custom seat cushions • Cockpit jack lines Deck • Hand-laid FRP, cored deck • Molded non-skid on deck and deckhouse • Teak cockpit seats and floor • FRP Cockpit coaming • Aluminum hatches • Stainless steel opening ports • Teak exterior handrails • Double anchor sprit & rollers • Chain locker & one deck pipe • Stainless Steel Stanchions w- vinyl covered double lifelines w- gates Port & Starboard • Stainless Steel Bow pulpit • Stainless Steel Stern pulpit • Teak cap rails with hawse holes & mooring cleats (six) • Dorade vents w- FRP boxes • FRP Seahood • Propane locker for two 20 lb. tanks, vented overboard • Two

coaming lockers • Aluminum mainsheet traveler w- roller car • Aluminum staysail tracks w- cars • Aluminum genoa tracks w- cars • Two Lewmar 54 self tailing electric jib sheet winches • Two Lewmar 44 self tailing secondary sheet winches • One Lewmar 44 electric self tailing winch for mainsheet, main halyard, and down haul • Seven Lewmar jam cleats on cabin top • One Lewmar 44 self tailing winch for topping lift and boom vang • One Anderson #10 winch on cabin top for main furling line • Two 40 Lewmar self tailing winches on mast • Running back stays • Jack lines • Plexiglas sliding companionway hatch • Instrument console mounted on seahood • Canvas covers for all hatches • Canvas covers for varnished hand rails • Canvas boom cover Ground Tackle • Maxwell 2200 Windlass • Salt water anchor washdown • Delta 55 Anchor • 300' chain rode

Electronics

At Navigation Station • AIS in and out displayed on the chart plotter • Majestic DVD 5700 player with SD card reader and USB input • Pioneer CD player/radio with MP3 input • Icom IC-M602 VHF • Iridium Sat phone with wireless and wired handsets • Raymarine E80 Chartplotter • Raymarine Autohelm Multi • Raymarine ST6001 Autopilot control • 12 volt DC outlet • 110 volt AC outlets • ACR 406 Mghz Epirb • LED Red flexible arm lamp • Electric panel • Generator remote start/stop control with hour meter and guages • Xantrex inverter control At Helm • AIS displayed on the chart plotter • Raymarine ST8001 Autopilot control • Bowthruuster control • Icom Commander II VHF • Raymarine E-120 Chartplotter/Radar • Raymarine ST60 Wind • Raymarine ST60 Depth • Raymarine ST60 Speed • Plastimo Compass

Electrical Equipment

• Westerbeke 7.6 KW generator with 230 hours • Xantrex 3000 Inverter/charger • 30 AMP shore power system with 50' dockside electrical cable • Complete 12 volt marine system with circuit breaker panel and separate battery switches for genset, engine, house and crossover • 3 Lifeline 4D AGM house batteries 2012 • 1 Lifeline group 31 AGM engine start battery 2012 • 1 Lifeline group 27 AGM generator start battery 2010 • Balmar 150 AMP alternator • Balmar smart regulator • All LED lighting throughout the boat including navigation lights

Engine and Machinery

• Yanmar 4-JH4TE 75HP • freshwater cooled • Dual Racor Fuel Filters • Engine cooling water intake strainer • Dripless shaft gland • Fiberglass drip pan • Engine room blower • Gori 3 blade bronze folding propeller • Spare 3 blade bronze propeller • Shaft Shark line cutter on propeller shaft

Исключения

При продаже яхты исключаются личные вещи владельца.

Отказ от ответственности

Компания предоставляет описание судна или яхты добросовестно, но не может гарантировать точность этой информации, а также не ручается за техническое состояние. Покупатель должен проинструктировать своих агентов или оценщиков исследовать представленную информацию более подробно, по собственному желанию. Продажа судна или яхты, изменение цены или снятие с продажи будет происходить без предварительного уведомления.

ФОТОГРАФИИ

Tayana 48 DS Aft Deck



Tayana 48 DS Cockpit



Tayana 48 DS Forward Deck



Tayana 48 DS Saloon



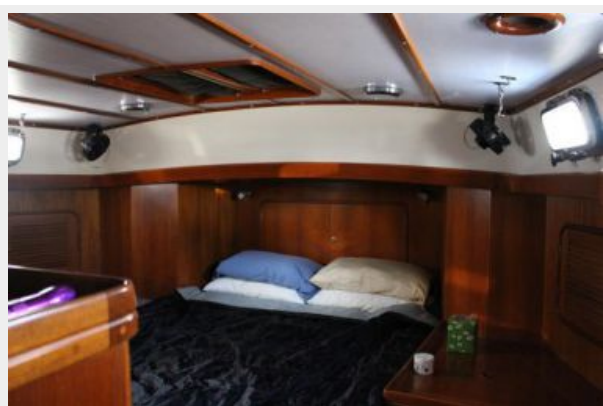
Tayana 48 DS Master Head



Tayana 48 DS Master Head



Tayana 48 DS Master Berth



Tayana 48 DS Galley



Tayana 48 DS Galley



Tayana 48 DS Galley



Tayana 48 DS Galley/Dinette



Tayana 48 DS Engine Room



Tayana 48 DS Engine Room



Tayana 48 DS Engine Room



Tayana 48 DS Dinette



Tayana 48 DS Nav Station



Tayana 48 DS Forward Stateroom



Tayana 48 DS Forward Stateroom



Tayana 48 DS Forward Head



Tayana 48 DS Forward Head



КОНТАКТЫ

Андрей Шестаков (Andrey Shestakov) – ведущий яхтенный брокер отдела продаж яхт и судов компании Shestakov Yacht Sales Inc. Официальный представитель Shestakov Yacht Sales Inc. для русскоговорящих клиентов в центральном офисе компании в Майами/Форт Лодердейл/Флорида/США.

Контактная информация

Email: andrey@shestakovyachtsales.com

Web: shestakovyachtsales.com

Телефоны

Краснодарский край: **+7(918)465-66-44**

США, Майами, Флорида: **+1(954)274-4435**

Время работы

Понедельник – Суббота: **9:00 - 21:00**
EDT

Воскресенье: **Закрито**

Адрес



Harbour Towne Marina, 850 NE 3rd St,
STE 213, Dania, FL 33004