

## ORION — BAYLISS BOATWORKS



**Судостроитель:** BAYLISS BOATWORKS

**Год постройки:** 2014

**Модель:** Катер для спортивной рыбалки

**Цена:** **ЦЕНА ЯХТЫ ПО ЗАПРОСУ**

**Местонахождение:** United States

**Длина общая:** 84' 0" (25.60m)

**Ширина:** 21' 0" (6.40m)

**Мин. осадка:** 5' 8" (1.73m)

**Макс. осадка:** 5' 9" (1.75m)

**Крейс. скорость:** 30 Kts. (35 MPH)

**Макс. скорость:** 40 Kts. (46 MPH)

Купить Orion — BAYLISS BOATWORKS а также выбрать подходящую вам яхту из нашего каталога яхт вам поможет опытный яхтенный брокер Андрей Шестаков. На сегодняшний день компания Shestakov Yacht Sales Inc. имеет большое количество яхт в собственном списке продаж, а также тесно сотрудничает со всеми крупными яхтенными производителями по всему миру.

Для того чтобы купить яхту Orion — BAYLISS BOATWORKS а также проконсультироваться по любому вопросу связанному с покупкой, продажей, чартером яхт позвоните по телефону **+7(918)465-66-44**.

# ОГЛАВЛЕНИЕ

ОГЛАВЛЕНИЕ	2
ХАРАКТЕРИСТИКИ	6
Обзор	6
Основная информация	6
Размеры	6
Скорость, вместимость и масса	7
Размещение	7
Корпус и палуба	7
Информация о двигателе	8
ПОДРОБНОЕ ОПИСАНИЕ	9
Overview	9
Cockpit/Mezzanine	10
Salon	11
AV Equipment	12
Galley/Dinette	14
Utility/Laundry Room/Electric Control Room	15
Companionway	15
Master Stateroom	16
VIP Guest Staterooms Midship	16
Forward Crew Twin Staterooms	17
Flybridge	17
Tower	18
Navigational Systems	18
Performance Specifications	19
Engine Room/Mechanical	20
Electrical	21
Air Conditioning System	21
Hull and Deck	22

About Lapis Lazuli Stone	23
Summary	23
Exclusions	23
Исключения	23
Отказ от ответственности	23
<b>ФОТОГРАФИИ</b>	<b>25</b>
Profile	25
Running	25
Stern	25
Cockpit/Mezzanine	25
Cockpit	25
Cockpit/Aft	25
Cockpit/Grill	26
Cockpit/Drink Box	26
Cockpit/Freezer	26
Cockpit/Freezer/Tackle	26
Day Head	27
Day Head	27
Salon Forward	27
Salon Forward	27
Salon Sofa	27
Galley	27
Galley	28
Bar Stools Footrest	28
Galley	28
Galley/Cooktop	28
Dinette	28
Dinette	28
Salon	29

Salon Storage	29
Salon Storage	29
Electrical/AV Room	29
Laundry/Pantry	29
Laundry/Refrigerator	29
Laundry/Pantry	30
Master Stateroom	30
Master Stateroom	30
Master Sette	30
Master Office	30
Master Head	30
Master Head	31
Port VIP Stateroom/Queen	31
Stateroom Head	31
Starboard VIP Stateroom/Queen	31
Starboard VIP Stateroom/Queen	31
Starboard VIP Stateroom/Queen	31
Guest/Crew/Bunk Rooms	32
Guest/Crew/Bunk Rooms	32
Starboard Bow Stateroom	32
Port Bow Stateroom	32
Stateroom Head	32
Bunk Room Head	32
Flybridge	33
Flybridge	33
Flybridge/Table	33
Flybridge/Table	33
Flybridge	33
Starboard Electronics Box	33

---

Aerial Shot From Tower	34
Port Electronics Box	34
Flybridge	34
Bow	34
Engine Room	34
Engine Room	34
Engine Room	35
Engine Room	35
Engine Room	35
Engine Room	35
Rendering	35
Aerial	35
Aerial Running	36
Running	36
Stern	36
Profile	36
General Arrangement	37
Profile	37
<b>КОНТАКТЫ</b>	<b>38</b>
Контактная информация	38
Телефоны	38
Время работы	38
Адрес	38

# ХАРАКТЕРИСТИКИ

## Обзор

Interior Features: Five stateroom/six head layout. Two level salon/galley with day head portside aft. Galley bar with 5 barstools. Walk-in pantry and walk-in electrical A/V closet forward of galley. Full beam master stateroom with hullside windows, L-shaped sofa, walk-in closet, office desk, 55" Seura TV. Companionway on center line, with 2 VIP staterooms and 2 crew staterooms, all with in-suite heads, all matching in size and features. High contrast teak veneers from one log. Teak and maple flooring in galley/dinette area and all heads. Lapis Lazuli countertops cored with aluminum honeycomb backing. Teak wainscoting. Burl maple panels. Air-actuated 65" TV in salon. Much more.

## Основная информация

**Тип судна:** Катер для спортивной рыбалки

**Подкатегория:** Convertible

**Модельный год:** 2014

**Год постройки:** 2014

**Страна:** United States

**Верх:** Full / Tuna Tower

**Открытая палуба мостика:** Да

**Кубрик:** Да

## Размеры

**Длина общая:** 84' 0" (25.60m)

**Ширина:** 21' 0" (6.40m)

**Мин. осадка:** 5' 8" (1.73m)

**Макс. осадка:** 5' 9" (1.75m)

## Скорость, вместимость и масса

<b>Крейс. скорость:</b> 30 Kts. (35 MPH)	<b>Крейсерская скорость поворота:</b> 1860 Kts.
<b>Дальность на крейсерской скорости:</b> 600	<b>Макс. скорость:</b> 40 Kts. (46 MPH)
	<b>Макс. скорость поворота:</b> 2450 Kts.
<b>Водоизмещение:</b> 135000 Pounds	<b>Чистый вес:</b> 101 Pounds
<b>Вместимость воды:</b> 450 Gallons	<b>Вместимость сточного бака:</b> 250 Gallons
<b>Объем топливного бака:</b> 3600 Gallons	<b>Расход топлива:</b> 160 Gallons

## Размещение

<b>Всего кают:</b> 5	<b>Всего коек:</b> 7
<b>Спальные места:</b> 10	<b>Всего ком. состава:</b> 6
<b>Каюта капитана:</b> Да	<b>Каюты экипажа:</b> 2
<b>Койки экипажа:</b> 4	<b>Спальных мест экипажа:</b> 4
<b>Комм. состав экипажа:</b> 2	

## Корпус и палуба

<b>Материал корпуса:</b> Cold Molded Mahogany	<b>Материал палубы:</b> Fiberglass over Wood
	<b>Комплектация корпуса:</b> Modified V-Hull
<b>Цвет корпуса:</b> Orion Blue	<b>Отделка корпуса:</b> Fiberglass
<b>Дизайнер корпуса:</b> Ullberg Yacht Design	<b>Дизайнер экстерьера:</b> Ullberg Yacht Design
<b>Дизайнер интерьера:</b> M.A.M.S. Design Anne Sigmon	

## Информация о двигателе

---

**Двигатели:** 2

**Производитель:** MTU

**Модель:** M94- 16 V 2000

**Тип двигателя:** Inboard

**Тип топлива:** Diesel



# ПОДРОБНОЕ ОПИСАНИЕ

## Overview

"Orion" is a unique and rare opportunity to own one of the most sought after custom sport fishes in the world. There is no textbook on How to Build a Great Yacht. THERE IS ONLY ONE SCHOOL - a lifetime on the water...and that is where John Bayliss got his education. In Greek mythology, Orion is the son of Poseidon, the god of the sea, and known in ancient times as a supernaturally strong hunter. Aptly named, the 84 ft. Bayliss, "Orion", is indeed a big, strong rig built specifically for hunting pelagic sport fish. With its drop shear, raked stem, massive bridge and trademark window line, the workmanship, attention to detail and systems are exemplary, like all of the boats that come from the shop of John Bayliss. A well-built, custom boat widely recognized as the most efficient and best riding hull afloat. A Bayliss boat is in a class to herself when it comes to ride and performance. As John Bayliss says "Please don't take our word for it. Ask the owners and captains that are running a Bayliss Sport Fish". Beginning in Summer of 2009, the owner of "Orion", after winning the White Marlin Open in New Jersey with his previous 77 Hatteras sport fish, decided he wanted an open bridge boat that was faster and with more custom features than a production boat could offer. After meeting with a few of the best in the business, he decided upon the obvious choice of a John Bayliss and B16 was born on paper. "B16" was Orion's production name and was a combination of the owner, John Bayliss and a Robert Ulberg design and concept to satisfy an experienced yachtsman that had an insatiable desire to fish the world's oceans in comfort and style as well as to cruise. For the Salon area, there is a day head to port and just forward of that there is a concealed 65" flat screen TV hidden by a custom air-actuated Bayliss Boatworks TV lift. For viewing and relaxing, the starboard side accommodates a huge U-shaped sofa with a convertible coffee table that transforms into a dining table for the sofa. "Orion's" galley is raised and includes a dinette, bar area, 5 bar stools and all the appliances that you've grown to expect from Bayliss Boatworks. There are two full height pantries - one for electrical service and all A/V components and the other for washer/dryer, freezer and galley storage. As you walk forward down the companionway, which has beautiful teak wainscoting, you will notice the companionway is located on the centerline of "Orion". This allows for 2 VIP staterooms and 2 Crew staterooms, all with in-suite heads and all matching in size and features. This is also Bayliss' first boat with a full beam aft master. This stateroom is huge and the boat was truly planned around this element. The master stateroom features a large in-suite head, king size bunk with air-actuated bunk top to access storage underneath, a 55" mirror-faced Seura TV, an L-shaped sofa, walk in closet, office desk and hull side windows with automated blinds. Along with those features, Lapis Lazuli countertops, burl maple panels, wainscoting and beautiful teak veneers all make this space stunning, represents the centerpiece of the vessel. You would expect the Flybridge on an 84-footer to be big, but in "Orion's" case, that is an understatement. Her bridge is a center console layout with 3 helm chairs, bridge wing hidden rod storage, U-shaped forward seating and much more. She has a total of 3 stainless steel refrigerated boxes that can serve either as a refrigerator or freezer, and they will help "Orion" carry the provisions she needs for extended trips. A new feature is a fold-away dining table that is over 8' across where up to 10 people can enjoy the bridge view while enjoying

beverages or having dinner. The bridge measures over 280 sq. ft., one of the largest Flybridge's ever made for an 80+ class sport fish. The table on the bridge is 6.1 cubic ft. and is also a refrigerated box. Her cockpit has a beautifully crafted teak aft bulkhead, all re-sawn in house and constructed from just two boards to ensure grain and color match. This area has 4 stainless refrigerator/freezers, including a huge in-deck box located just forward of the fighting chair. Another item that has become standard of late is the cockpit grill which is port side and offers a huge work area for grilling and serving lunch while fishing. The cockpit, excluding the mezzanine, measures just over 186 sq. ft. and the mezzanine over 85 sq. ft. Transom live well is about 75 gallons and in deck fish box just under 20 cubic ft. or 150 gallons. Lower mezzanine freezer is about 10.5 cubic ft. and upper mezzanine freezer about 12.5 cubic ft. The cockpit drink box is about 6.5 cubic ft. with dedicated and individual storage for each drink. "Orion's" overall design is extremely effective and efficient. She is designed for speed and a smooth ride, but above all she is designed to fish really well. With speeds of up to 40 knots, she can not only find the fish, but back down on them with accuracy and precision. Additionally, she has enough creatively-stored tackle to stock a small shop! Bayliss Boatworks has been building custom sport fishing yachts in Wanchese, North Carolina since 2002 and has quickly made a name for itself as one of the most creative and high quality builders in the industry. "Orion" is the 16th hull for Bayliss. Two other custom Bayliss boats are in production: B19 90' "Singularis" and B20 68' "Parranda". Bayliss is currently sold out through Hull 28 with an approximate 5 year wait time to begin new builds. Bayliss facilities include a full service boatyard and a mobile dockside service fleet serving the Outer Banks and the surrounding region. Support to all Bayliss owners is easily available through Bayliss Boatworks. **MORE SPECIFIC DETAILS TO FOLLOW...**

## Cockpit/Mezzanine

---

The heart and soul of any sport fish is the cockpit and mezzanine. Orion's has an extreme amount of usable space; every inch of this vessel was well thought out and planned to the finest detail.

- Luxurious mezzanine seating with rolled edge leather, custom arm rests with cup holders and concealed A/C system at your back.
- Teak mezzanine sole, 15.5' wide x 5.5' fore to aft = 85 sq. ft., from the bulkhead to the edge of the mezzanine deck.
- Custom huge stainless steel interior drink box divided out per drink for ease of selection, 35" x 31.5" x 10.5" = 6.5 cubic ft.
- Upper mezzanine freezer box, 40' x 20" x 27" = 12.5 cubic ft.
- Lower mezzanine freezer box, 40' x 28" x 16" = 10.37 cubic ft.
- Large in-deck refrigerator fish box in cockpit sole that is 58" x 26" x 22.5" = 19.63 cubic feet or 150 gallons.
- Large transom livewell, 64" x 16" x 19" = 70 to 75 gallons.
- Built-in Gaggenau electric barbeque grill and tackle center with 3 teak drawers.
- Full teak bulkhead, salon door and wing boards.
- (2) Starboard side additional teak tackle drawers.

- Port and starboard has bait and other utility boxes with teak lids.
- All deck lids on hydraulic cylinders.
- Large Release Marine teak fighting chair with offset stainless steel pedestal base.
- Custom under gunnel sliding doors and storage - gaft and other.
- Teak sole in cockpit, 186 sq. ft.
- Teak coaming and covering boards with Bayliss finish and artwork.
- (6) gunnel rod holders.
- (6) rod holders in tower legs.
- Under gunnel cleats and large corner stainless steel hawse pipes.
- Deck rails with oval drains.
- Tuna door.
- Curved ladder with teak steps to flybridge.
- Fresh and salt water washdowns.
- Electric control door to salon.
- Engine hatch door to engine room on hydraulic cylinders.

## Salon

---

Entering the salon from the cockpit through the electric actuated door you will find: Day Head

- “Lapis Lazuli” granite countertops with under mounted porcelain sink, brushed nickel fixtures and built in soap dispenser.
- Curved wash basin front cabinet and storage throughout.
- Window so you don’t miss any action in the cockpit.
- Teak and holly sole flooring.
- Beautiful teak and satin finish throughout.
- Headhunter Royal Flush premium head system, electronically actuated.
- Mirror.
- LED lighting.
- A/C discharges.
- Head vent and fan.

Entering through the spacious salon you truly feel the wide beam of 21 ft., the largest Bayliss has created to date: Main Salon

- Large custom U-shaped sectional sofa with enormous storage built underneath for tackle, etc.
- The custom sofa was built with one primary goal – comfort. The large seat base with rolled edge and custom back support make this one of the most comfortable places to relax. All seats hydraulically lift up to make access easy and useful.
- Custom teak coffee/cocktail table with full storage and outside leaf’s that raise up and extend out making this a dining area for 4-6 people to eat comfortably. Inside, there is storage for tackle, liquor or other as needed.
- Built in next to the sofa is a large custom arm rest with underneath storage for Crestron

remote and charging station, as well as controls for the electric blinds, SAT phone, A/C control, lighting, storage and charging outlets, etc. Under this are two custom drawers that slide out and offer ample storage for additional items.

- Overhead in the custom headliner are 15 LED lights and teak accent trim as well as the beautiful headliner perfectly installed and fitted with no seams.
- Throughout the salon there are no visible outlets and/or switches that are not essential to keep a sharp look and very clean design.
- Across from the sofa is a 65" LED HD TV that pops up from the port side teak cabinetry offering super high resolution and surround sound to rival a professional recording studio. This is a great place to watch your favorite movie.
- Indirect valance lighting.
- Concealed A/C ducting with even distribution and "Hush" sound design.
- Fully electronic blinds and tinted windows offer ample privacy without the noise of wooden shades in a performance sport fish.
- The teak interior wood was selected by John Bayliss and taken from a preselected single tree throughout the entire boat to keep all the grains and the seam of the wood to match perfectly.
- The finish is a painstakingly 10 coat process of perfection by some of the finest furniture craftsmen in the world.
- We challenge the most discriminating buyer to find a flaw.

## AV Equipment

---

### Salon/Galley

- (1) Pioneer Elite SC65 receiver.
- (2) Lexicon DD8 digital amplifier 8Ch x 125w.
- (1) Sirius home satellite component receiver w/ RS232.
- (1) DirecTV HR24 HD DVR US receiver.
- (1) DirecTV Latin America receiver.
- (1) Blu-ray player.
- (1) Apple TV.
- (1) Apple iPad with retina display Wi-Fi 16GB, white.
- (2) Apple Airport Extreme base station.
- (5) Speaker Craft ASM66433 Accufit ultra slim three speaker.
- (1) Sunfire True Sub HRS8 subwoofer, 1000 watts.
- (2) Mid Atlantic slim 5 29 space KD rack frame black.
- (1) Crestron 3-Series control system.
- (1) Crestron lsys 2.8" handheld wireless touch with infiNET.
- (4) Stellar 25' HDMI v1.4 premium high speed cable.
- (1) Crestron shade and drape controller, 120 volt AC.

### Salon MAC Computer/Server

- (1) MAC Mini 2.6 GHz Intel Quad Core i7 processor, 1TB HD.
- (1) G-RAID, external RAID storage 4TB.
- (1) Apple MacBook Air SuperDrive.
- (1) Apple wireless magic mouse.
- (1) Apple wireless keyboard.
- (1) Apple TV.
- (1) APC Smart Ups.
- (1) Apple Airport Extreme base station.

### Master Stateroom

- (1) Pioneer Elite receiver model VSX-60.
- (1) Sirius home satellite component receiver w/ RS232.
- (1) DirecTV HR24 HD DVR US receiver.
- (1) DirecTV Latin America receiver.
- (1) Blu-ray player.
- (1) Apple TV.
- (1) Apple iPad w/ retina display Wi-Fi 16GB, white.
- (5) Speak Craft ASM66433 accufit ultra slim three speaker
- (4) Stellar 25' HDMI v1.4 premium high speed cable.
- (1) Sunfire True Sub HRS8 Subwoofer, 1000 watts.
- (1) Crestron lsys 2.8" handheld wireless touch with infiNET.
- (1) Crestron 3-Series control system.
- (1) Crestron shade and drape controller, 120 volt AC.

### VIP Stateroom 1

- (1) Niles stereo amplifier with built in switching.
- (1) Audio line level adapter.
- (1) DirecTV H25 satellite receiver (SWM use only/HD7).
- (1) DirecTV Latin America receiver.
- (1) Apple TV.
- (2) Stellar 25' HDMI v1.4 premium high speed cable.
- (1) Crestron lsys 2.8" handheld wireless touch with infiNET.
- (1) Crestron 3-Series control system with PW-2420RU.
- (2) Speaker Craft ASM66433 Accufit ultra slim three speaker.

### VIP Stateroom 2

- (1) Niles stereo amplifier with built in switching.
- (1) Audio line level adapter.
- (1) DirecTV H25 satellite receiver (SWM use only/HD7).
- (1) DirecTV Latin America receiver.
- (1) Apple TV.
- (2) Stellar 25' HDMI v1.4 premium high speed cable.

- (1) Crestron Isys 2.8" handheld wireless touch with infiNET.
- (1) Crestron 3-Series control system with PW-2420RU.
- (2) Speaker Craft ASM66433 Accufit ultra slim three speaker.

#### Bunk Room 1

- (1) Niles stereo amplifier with built in switching.
- (1) Audio line level adapter.
- (1) DirecTV H25 satellite receiver (SWM use only/HD7).
- (1) DirecTV Latin America receiver.
- (1) Apple TV.
- (2) Stellar 25' HDMI v1.4 premium high speed cable.
- (1) Crestron Isys 2.8" handheld wireless touch with infiNET.
- (1) Crestron 3-Series control system with PW-2420RU.
- (2) Speaker Craft ASM66433 Accufit ultra slim three speaker.

#### Bunk Room 2

- (1) Niles stereo amplifier with built in switching.
- (1) Audio line level adapter.
- (1) DirecTV H25 satellite receiver (SWM use only/HD7).
- (1) DirecTV Latin America receiver.
- (1) Apple TV.
- (2) Stellar 25' HDMI v1.4 premium high speed cable.
- (1) Crestron Isys 2.8" handheld wireless touch with infiNET.
- (1) Crestron 3-Series control system with PW-2420RU.
- (2) Speaker Craft ASM66433 Accufit ultra slim three speaker.

#### Bridge

- (1) Fusion MS-IP700 marine iPod/iPhone dock.
- (2) JL Audio M650 6.5 coax speakers gray classic grille.
- (2) JL M880 8.8 marine speaker pair white classic grille.
- (1) JL Audio MHD600/4 600W 4-channel power amplifier.

#### Cockpit

- (2) Speaker Craft ASM69730 Accufit CRS7 (overhead).
- (2) JL Audio M770 7.7 marine speaker pair white classic grille (under gunwale).

---

## Galley/Dinette

---

#### Stepping up to the galley:

- All counter tops elegantly laid with "Lapis Lazuli" stone.

- A beautiful and custom dinette that seats four comfortably. A large teak table and large window make you feel like you are sitting on an outdoor balcony over the ocean.
- Forward of the dinette is a "True" 24 bottle wine chiller and a "Hoshizaki" clear ice machine.
- Large U-shaped counter and cabinets with 5 custom teak bar stools with custom backs and a footrest. Additionally, a custom teak hydraulic footrest pops out when facing aft for further comfort in any position.
- Custom glass and china storage (all china included).
- Viking custom convection oven.
- Built-in coffee maker, hidden away in starboard cabinet.
- KitchenAid trash compactor.
- Large custom marlin bronze statue
- (6) large drawer style "True" refrigerator with a custom electric locking system to ensure nothing slides open while underway.
- Custom pot and pan holders, racks and shelves designed for specific equipment.
- Custom plate and storage system with all flatware serving 6-8.
- Custom cover - four burner cook top.
- Teak and holly wood flooring throughout.
- Door to A/V electrical room; to truly appreciate the design and thought of a Bayliss one needs to look at the wiring and organization of its electrical system. One look in this room you will appreciate the time and dedication to detail not found in any other sportfish.
- (24) overhead LED lights.
- Curved top doors to electrical and utility rooms.
- LED lighting throughout.
- Clean, sleek look and feel with no visible outlets or switches.
- Very long and large single panel window port and starboard that provide a wide open view.

---

## Utility/Laundry Room/Electric Control Room

---

Forward of the galley:

- Twin Bosch washer and dryer units.
- "Vitrifigo" freezer drawer that pulls out. DW 100 3.3 cubic ft. marine freezer with a cool satin finish.
- HP printer, connected via ship Wi-Fi.
- Gun locker, concealed.
- Large storage pantry and other storage for linens and miscellaneous in teak cabinets.

---

## Companionway

---

Down to the companionway:

- Reverse angled and aligned lighting so that looking starboard one would not be looking directly into a bright LED light. These are custom and recessed to hide light but allow

ample lighted stairs and companionways.

- LED lighting, well appointed.
- Teak trim and paneling along the length of access ways with a plush carpet and base boards.
- Curved top teak doors to all staterooms.

---

## Master Stateroom

---

Orion was the first full beam master stateroom built by Bayliss with a large king berth and portside hull window.

- King berth with upgraded, large comfort plus mattress.
- Large burl maple headboard and accent panels.
- Custom teak accents.
- Port side leather settee with ample storage beneath and designed like the salon sofa.
- Starboard side dresser with "Lapis Lazuli" granite with plentiful drawers and bronze statue mount.
- Large counter with Snow White marble countertop and wash basin.
- Curved front cabinets.
- Teak and holly flooring.
- Teak and glass shower door.
- Custom port light windows for natural light.
- Electric blinds and privacy shades, all concealed.
- Custom desk and private work station with teak top and burl maple panels.
- Large 55" LED TV flush mounted.
- Large walk in closet, trimmed in teak and cedar with drawers.
- Hydraulic bed lift with easy access to storage below.
- Spacious head, with stone shower and countertops, a custom stone backsplash and curved cabinetry.
- Concealed outlets, switches and A/C controls.
- Overhead LED lighting.

---

## VIP Guest Staterooms Midship

---

- Queen berths with custom large burl maple headboards, stone bedside tables and ample direct and indirect lighting.
- Concealed LED TV behind a large glass mirror.
- Overhead port light.
- Hydraulic bed lift with easy access to storage below.
- Concealed outlets, switches and A/C controls.
- Large head and shower with stone countertops and teak and holly flooring.



---

## Forward Crew Twin Staterooms

---

- Twin berths in two mirrored staterooms can be used as crew or guest staterooms. Both staterooms offer flush mount LED Samsung TV's trimmed in teak, larger bottom berths with custom upgraded mattresses, each with their own private head including a shower and wash basin.
- A/C discharge and supply are hidden in the valances.
- LED lighting.
- Large closets for each with storage and drawers underneath.
- Large heads and showers with glass front teak doors and spacious stone countertops with teak and holly flooring.
- Twin overhead port lights.
- Overhead speakers.
- Concealed outlets, switches and A/C controls.

---

## Flybridge

---

One of the largest Flybridge's in the world of sport fishes with 280 sq. ft. An enormous space with features of a large motor yacht flybridge.

- Forward large circle flybridge seating with a teak top table in the center that is a large refrigerator box, measuring 42" x 36" x 7" = 6.1 cubic ft.
- Large forward console side by side drink box and freezer. Drink box measures 25.5" x 14.5" x 16" = 3.4 cubic ft.
- Custom Bench measuring 77.5" x 20" x 7.5" = 6.7 cubic ft.
- Custom dining table that folds away into a bag sets up quickly and easily; comfortably seats 12 for dinner or a game of poker.
- Custom curved and premium pillowed backrest vinyl seating.
- Custom arm rest and cup holders.
- Indirect LED lighting.
- (3) Release Marine helm chairs.
- Concealed helm electronics.
- Sliding side doors for storage.
- Clean feel and design.
- Center helm and teak pod with maritime electronics and console, plexi glass concealed electronics.
- Three sided EZ2CY enclosure.
- Teak helm pod with Palm Beach style controls, with bow thruster buttons in controls.
- Custom Palm Beach hard top and tower.
- Drop down electronics pod.
- Teaser reels concealed in hard top.
- Teak trim mound Flybridge tops.
- Surround sound stereo and speaker system recessed into seat bases for clean look.

## Tower

---

- Tuna Tower with molded top 84' convertible, gap 13', polished pipe, (4) antenna, stands-offs, 3 sided track on bimini rail
- Upgrade hardtop lights to tri-color LED with fiberglass recess
- Bow legs 3"
- Bayliss Radar pod
- Molded standing platform with coupler box on platform
- Molded 3-in-1 24V LED light pod with stainless steel bezel
- Molded single 24V LED light forward platform stainless steel bezel
- Control box 63" with flush mounted compass
- Fiberglass electronics recess top control box large port side
- Tower sunshade molded w/internal wire tracks carbon fiber upgrade to fiberglass, welded antenna mounts
- Bridge rail, leg to leg, double aft to outer main leg
- Rod holder polished weld to rail PBT style
- Rod holder polished aft legs 3-P-3-S PBT style
- Rupp outriggers
- Rupp hydro system
- Flag staff aft
- Flag staffs welded to each side of platform perimeter rail
- Navigation lights port and starboard, molded
- Stern light, molded
- Drop down electronics box in hardtop
- Upgrade belly band to wrapped Rybo style
- Custom welded tabs on hardtop perimeter rail for teaser line
- Stainless steel angled grommets mounted under hardtop for teaser line
- Bridge ladder with flat bar steps Bayliss to supply and install teak steps
- Teaser reel bracket, sliding door and runs for (4) reels
- Tri-color LED lights w/ fiberglass recess in sunshade top
- Tri-color LED lights w/ fiberglass recess under platform
- Install molded aluminum plate forward in hardtop for night vision camera
- Install molded aluminum plate forward in platform for search light
- Molded SAT dome mount mounted on tower sunshade
- Molded SAT communication dome mount aft of radar pod molded into aft end Bayliss radar pod
- Release Marine teaser line grommets with swivel tips outer edge of hardtop
- Weld foot rest rail between fwd main legs under control box
- Custom flip-up seats with padded cushions in tower
- Fit and weld pads upper end of tower to make removable above platform
- Teaser door and opening to fit 8" display inside

## Navigational Systems

---

### Custom Marine Electronics Package:

- (4) KEP 21" Glass Bridge Display LED Monitors
- Furuno NavNet 3D BlackBox MFD/Chart Plotter
- Furuno NavNet 3D Digital UHD Radar 25kW
- Furuno DFF1-UHD TruEcho CHIRP Sounder
- Furuno CH250 Searchlight Sonar BB System
- Furuno WASSP Multi-Beam Mapping Sonar system
- (2) Furuno RD-33 Remote Display
- (2) Simrad NSO Marine Processors Simrad BSM-2 Broadband CHIRP Sounder Module
- Simrad TX06S-1 6KW 4' Open Array Radar
- (2) Simrad NSE8 8" Multifunction Display (Helm)
- Simrad NSE8 8" Multifunction Display, (Teaser Box)
- Simrad AP2803 Inboard Autopilot System
- Simrad WM-2 Weather/Radio Module
- FLIR M-625L NTSC Premium Night Vision System
- Carlisle & Finch 200W Xenon Searchlight
- (2) Standard Horizon GX5500 25W VHF
- KVH TracPhone V3 w/ Case-Mounted ACU and Modem
- KVH TracVision HD7 TriAmericas System
- Wave Wifi Ethernet Converter Brdg 1W

### Tower Electronics

- Simrad NSE12 12" Multifunction Display
- Simrad AP24 Control Head
- (2) Standard Horizon GX5500 25W VHF
- Furuno RD-33 Remote Display

## Performance Specifications

### RPM GPH Speed Kts    RPM GPH Speed Kts

600 6    8.3                    1750 145    27.3

700 8    9-9.5                    1800 160    28

800 15    10                        1850 165    30

900 22    11.5                    1900 180    13.30.5

1000 27	12.3	1950 185	32
1100 40	13.5	2000 200	32.7
1200 50	14.3	2050 205	33.7
1300 70	16.2	2100 218	35
1400 93	18	2150 220	36
1500 105	21	2200 240	36.3
1600 120	23.5	2250 243	37.3
1650 132	24.7	2300 260	38
1700 138	26	2350 275	39

## Engine Room/Mechanical

- Twin M94's 16V2000 MTU 2600Hp with full MTU warranty until 2/11/2016. Option to add an additional 3 years warranty is available through MTU for approximately \$50,000. For another 36 months or 2000 hours whichever comes first, additional hours are available.
- Twin M944T 38kW Northern Lights generators, fresh water cooled. Each can supply 175 Amps of clean 60hertz A/C power to A/C panels.
- ZF transmissions & gear – 2.25 to 1 with 5 blade Veem propellers, 40" x 56.1".
- Sea Chest.
- High velocity engine room ventilation system with moisture eliminator engine room air intake boxes.
- Emergency crash pumps.
- (2) 55 gallon integrated oil tanks.
- Oil change system for main engines, generator and transmissions.
- FM 200 fire suppression system.
- High water bilge alarms.
- Fuel transfer pump.
- Tank sentry display – aft main tank and AUX forward fuel tank, fresh water and holding

tanks.

- Fuel tank sight gauge and fuel tank overflow alarms.
- Dripless shaft seals with spare seal carrier with dual raw water cooling.
- Hydraulic fluid tank with site gauge.
- Wesmar hydraulic bow thruster.
- Rudder angle indicator.
- SeaStar power assisted steering system with dual power steering pumps, one on each main engine.
- Racor fuel filters for main engines and generators.
- Fuel priming pumps for main engines and generators.
- UV fresh water sterilizer.
- (2) head hunter Mach5 fresh water pumps.
- FCI modular 1800 gallons per day water maker.
- Hydraulic bow thruster powered off mains.
- Compressed air system with 2 compressors.

## Electrical

---

- (2) 100 Amp 50 ft. cords 120/240 VAC, 200 total capacity. Standard 3 wire single phase 120/24 VAC split – phase A/C power
- Asea 200 Amp power converters, ASea 25s power management systems.
- Asea Isolation transformers.
- Ground fault protection throughout.
- DC batteries; (3) battery banks that house Odyssey 31m-PC 2150 batteries. Each engine contains (2) 12 volt batteries connected in series to power the 24 volt starting motors. The ship service bank contains (4) batteries, two are connected in series creating 24 volts. The two sets are then wired in parallel to provide twice the capacity at 24 volt.
- Smoke detectors and system throughout.
- Vanner battery equalizer.
- Battery monitoring system.
- Battery chargers - (2) included that control and charge all battery banks and monitor the temperature voltage and current to all battery banks.
- Back up battery system.
- Battery isolation.
- ASea seamless transfer system.
- Underwater bonding system.

## Air Conditioning System

---

Vessel utilizes a tempered water (also known as chilled water) air conditioning system. As with all marine air conditioning (A/C) systems, heat is transferred from the living spaces to the seawater surrounding the boat through several steps. In a tempered water system, the air

conditioning units (air handlers) in each stateroom transfer the heat from the air to circulated water. A water circuit links all the air handlers on the boat together with two tempering units (chillers) located in the pump room. The chillers transfer the heat from the water in the chilled water loop to seawater that is drawn from the centralized seawater system. Finally, this water is discharged overboard. If the system is used in heat mode, then this process works in reverse, taking heat from the seawater and eventually transferring it to the air in the boat.

- 96,000 BTU - 8 tons.
- (2) 4 ton chillers.
- (2) Raw water cooling pumps.
- Chilled water loop.
- (2) Chiller condensing units.
- (2) Chilled water circulating pumps.
- Chiller logic control panel.
- (2) Variable frequency drives.
- (12) Air handlers.
- (12) Thermostats.

## Hull and Deck

---

Bayliss Boatworks builds their hulls utilizing the “JIG” (cold molded) system. A five axis router is used to cut out the frames that are laid out and become the JIG.

Carolina boats are known for their light weight hull, wicked flare for knocking down head seas and have a sexy, yet muscular, profile and Bayliss is no exception. The instinctive lines and meticulous detail and insatiable finish inside and out are what separate Bayliss from the rest of the world.

On the practical side, these composite material boats are lighter than the conventional fiberglass ones of similar size and require less horsepower and therefore less fuel to push them across the water.

- Fully painted hull and super structure - Awlcraft 2000 Cloud White.
- Custom hull color, Awlcraft “Orion Blue”.
- Bow anchor system and windlass.
- Teak cap rail.
- Custom forward deck sunpad.
- Custom black mast.
- Custom teak transom with 10 coats clear polyurethane.
- Full teak cockpit.
- Teak trim rail around Flybridge.
- (3) deck hatches.

---

## About Lapis Lazuli Stone

---

Throughout "Orion" you will find beautiful "Lapis Lazuli" stone. Lapis Lazuli stones resonate with the vibration of truth and enlightenment and are powerful intense blue stores for opening the third eye and stimulating the pineal gland. The more blue in the stone, the more valued it has always been. These stones have been prized since antiquity, as they are one of the most beautiful blue crystals sold. Lapis Lazuli is said to relieve anger and negative thoughts, as well as easing frustrations causing anger. They resonate with the energy of the inner king or queen and are historically stones of royalty and this crystal also helps to balance the male and female aspects of your personality. The energy of these blue crystals may intensify the growth of psychic abilities, intuition, channeling and aid you to contact your guardian angels. The capacity of this crystal's energy to stimulate the development of psychic gifts, makes it a stone that is in demand.

---

## Summary

---

"Orion" remains an excellent opportunity to own a state of the art, elite custom sport fish built by one of the world's highest quality custom boat builders.

Currently, Bayliss is sold out until the year 2019 to begin a new start with approximately 24-30 months of build time which is approximately 7 years from now.

With the increasing cost of materials and labor, as well as time and value for your money, this is a unique offer for stepping into a turnkey 84' piece of art. There is no other competition to view or look at.

Once you step foot on "Orion", or any Bayliss, you will immediately see and feel the difference and understand what 20 current owners already have and their appreciation for the best in the world.

---

## Exclusions

---

- The name "Orion".
- All owners personal effects.
- SAT TV boxes, etc.
- Fishing rods, reels and all tackle.

---

## Исключения

---

При продаже яхты исключаются личные вещи владельца.

---

## Отказ от ответственности

---

Компания предоставляет описание судна или яхты добросовестно, но не может гарантировать точность этой информации, а также не ручается за техническое состояние. Покупатель должен проинструктировать своих агентов или оценщиков исследовать представленную информацию более подробно, по собственному желанию. Продажа судна или яхты, изменение цены или снятие с продажи будет происходить без предварительного уведомления.



# ФОТОГРАФИИ

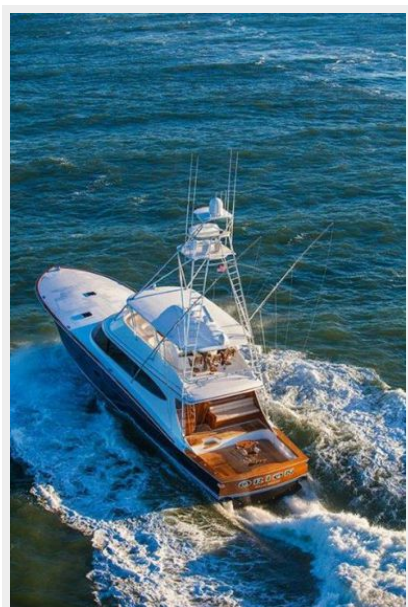
**Profile**



**Running**



**Stern**



**Cockpit/Mezzanine**



**Cockpit**



**Cockpit/Aft**



**Cockpit/Grill**



**Cockpit/Drink Box**



**Cockpit/Freezer**



**Cockpit/Freezer/Tackle**



**Day Head**



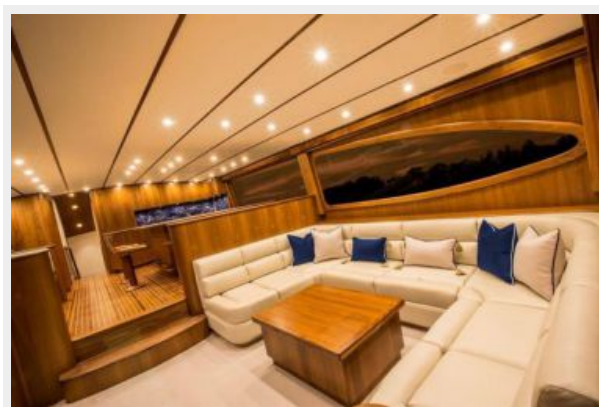
**Day Head**



**Salon Forward**



**Salon Forward**



**Salon Sofa**



**Galley**



**Galley**



**Bar Stools Footrest**



**Galley**



**Galley/Cooktop**



**Dinette**



**Dinette**



**Salon**



**Salon Storage**



**Salon Storage**



**Electrical/AV Room**



**Laundry/Pantry**



**Laundry/Refrigerator**



**Laundry/Pantry**



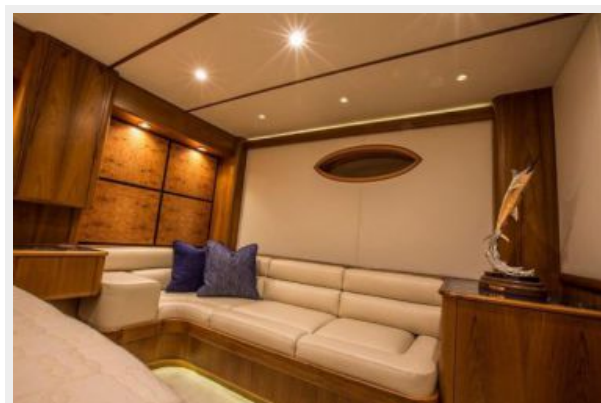
**Master Stateroom**



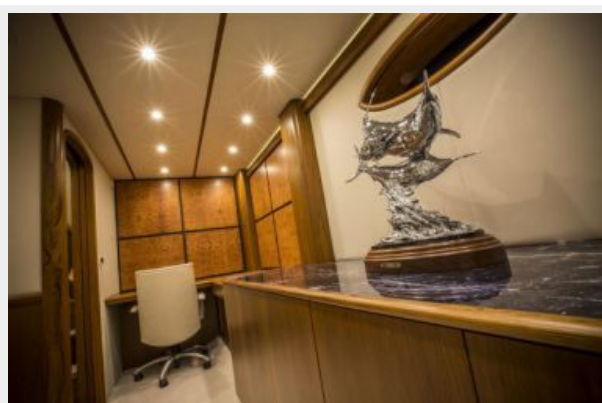
**Master Stateroom**



**Master Sette**



**Master Office**



**Master Head**



**Master Head**



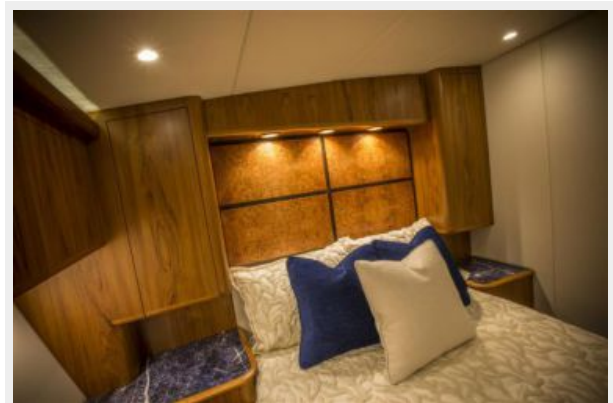
**Port VIP Stateroom/Queen**



**Stateroom Head**



**Starboard VIP Stateroom/Queen**



**Starboard VIP Stateroom/Queen**



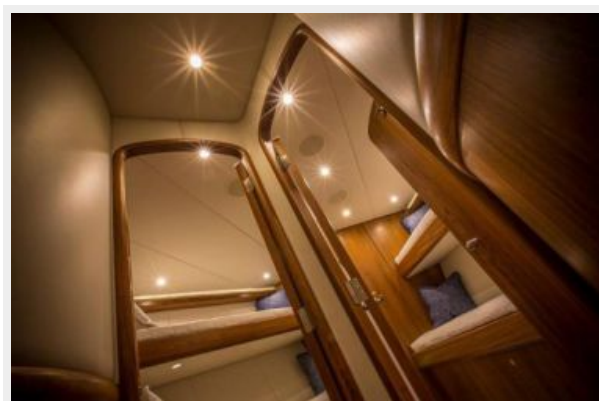
**Starboard VIP Stateroom/Queen**



### Guest/Crew/Bunk Rooms



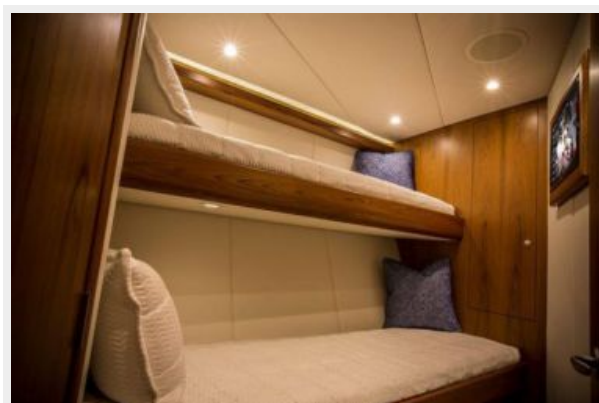
### Guest/Crew/Bunk Rooms



### Starboard Bow Stateroom



### Port Bow Stateroom



### Stateroom Head



### Bunk Room Head





**Flybridge**



**Flybridge**



**Flybridge/Table**



**Flybridge/Table**



**Flybridge**



**Starboard Electronics Box**



**Port Electronics Box**



**Aerial Shot From Tower**



**Flybridge**



**Bow**



**Engine Room**



**Engine Room**



**Engine Room**



**Engine Room**



**Engine Room**



**Engine Room**



**Aerial**



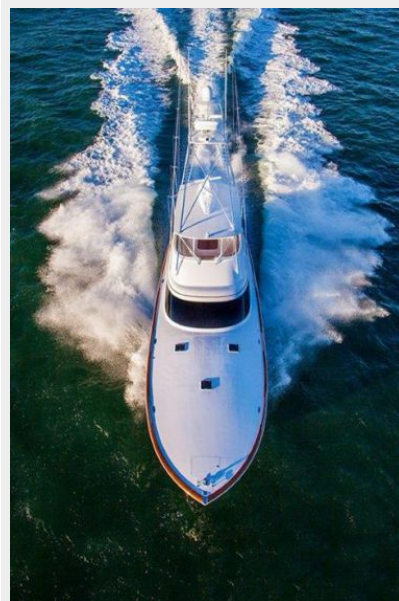
**Rendering**



**Running**



**Aerial Running**



**Stern**



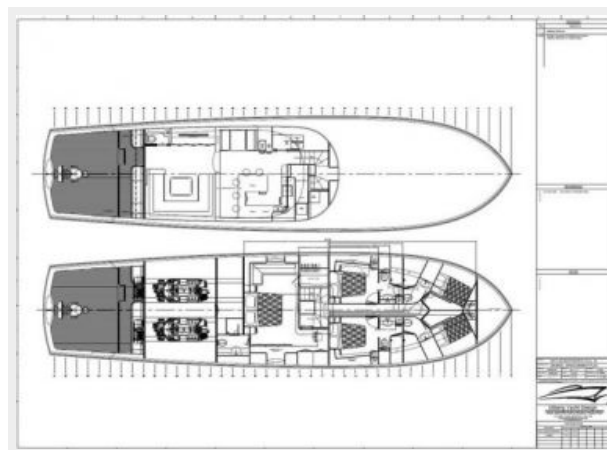
**Profile**



### Profile



### General Arrangement



# КОНТАКТЫ

---

Андрей Шестаков (Andrey Shestakov) – ведущий яхтенный брокер отдела продаж яхт и судов компании Shestakov Yacht Sales Inc. Официальный представитель Shestakov Yacht Sales Inc. для русскоговорящих клиентов в центральном офисе компании в Майами/Форт Лодердейл/Флорида/США.

## Контактная информация

---

Email: [andrey@shestakovyachtsales.com](mailto:andrey@shestakovyachtsales.com)

Web: [shestakovyachtsales.com](http://shestakovyachtsales.com)

## Телефоны

---

Краснодарский край: **+7(918)465-66-44**

США, Майами, Флорида: **+1(954)274-4435**

## Время работы

---

Понедельник – Суббота: **9:00 - 21:00**  
EDT

Воскресенье: **Закрито**

## Адрес

---



Harbour Towne Marina, 850 NE 3rd St,  
STE 213, Dania, FL 33004