

LULLULA OF INVERNESS — NAJAD



Builder: [NAJAD](#)

Year Built: 2010

Model: Cruising Sailboat

Price: PRICE ON APPLICATION

Location: United Kingdom

LOA: 37' 10" (11.53m)

Beam: 11' 11" (3.63m)

Min Draft: 6' 4" (1.93m)

Our experienced yacht broker, Andrey Shestakov, will help you choose and buy a yacht that best suits your needs **LULLULA OF INVERNESS — NAJAD** from our catalogue. Presently, at Shestakov Yacht Sales Inc., we have a wide variety of yachts available on our sale's list. We also work in close contact with all the big yacht manufacturers from all over the world.

If you would like to buy a yacht **LULLULA OF INVERNESS — NAJAD** or would like help answering any questions concerning purchasing, selling or chartering a yacht, please call **+1(954)274-4435**

TABLE OF CONTENTS

TABLE OF CONTENTS	2
SPECIFICATIONS	3
Overview	3
Basic Information	3
Dimensions	3
Speed, Capacities and Weight	3
Accommodations	3
Hull and Deck Information	4
Engine Information	4
DETAILED INFORMATION	5
Construction	5
Machinery	5
Electrical Systems	6
Plumbing Systems	7
Tankage	7
Navigation Equipment	8
Domestic Equipment	8
Accommodation	9
Deck Equipment	11
Exclusions	14
Disclaimer	14
PHOTOS	15
CONTACTS	19
Contact details	19
Telephones	19
Office hours	19
Address	19

SPECIFICATIONS

Overview

Late and very shiny example of the very popular Najad 380 from 2010. Built to to an incredibly high specification and sporting huge inventory. Full Raymarine package, mastervolt combi,UK Syversen sails including gennaker and furling code zero.

Basic Information

Category: Cruising Sailboat

Model Year: 2010

Year Built: 2010

Country: United Kingdom

Dimensions

LOA: 37' 10" (11.53m)

LWL: 32' 5" (9.88m)

Beam: 11' 11" (3.63m)

Min Draft: 6' 4" (1.93m)

Speed, Capacities and Weight

Displacement: 20062.065842 Pounds

Water Capacity: 105.6688208 Gallons

Holding Tank: 14.52946286 Gallons

Fuel Capacity: 85.8559169 Gallons

Accommodations

Total Cabins: 2

Total Berths: 6

Total Heads: 1

Hull and Deck Information

Hull Material: GRP

Deck Material: Teak

Hull Finish: Stainless Steel

Hull Designer: Judel/Vrolijk

Engine Information

Engines: 1

Manufacturer: Yanmar

Model: 4JH4-E

Engine Type: Inboard

Fuel Type: Diesel

DETAILED INFORMATION

Construction

Hull, Deck & Superstructure Construction:

- *Hull No 86*
- White E-Glass Vinylester with carmine stripes.
- Teak fore, side, aft decks and cockpit.
- Teak toerail.
- Swim platform.
- High gloss varnished teak under windshield.
- Stainless steel rubbing strip.
- Dover white anti-foul (Spring 2015)

Keel & Rudder:

- Lead keel (standard draft).
- Semi skeg hung rudder.
- Anodes (Spring 2015)

Machinery

Engine & Gearboxes:

- 1 x Yanmar 4JH4 - E 54hp diesel engine.
- Racor fuel filter
- 571 Engine Hours
- Last service - Spring 2015
- Speed seal impeller cover

Propulsion & Steering:

- Aquadrive shaft coupling.
- 3 Blade flex-o-fold propeller with rope cutter.
- Wheel steering; leather covered.
- Bowthruster.
- Dripless stuffing box.

Other Mechanical Equipment:

- Gas solenoid.

Electrical Systems

Voltage Systems:

- 4 x 240v outlets; 1 x 240v power sockets at navigation table.
- 4 x 12v outlets at navigation table, cockpit and berths
- Circuit breakers and switchboard at navigation table

Battery Banks:

- 12v Ships service, 3 Mastervolt Gel Batteries (Domestic) - 360AH and 1 Mastervolt AGM Battery (Starter) - 55AH - all new 2012
- Battery isolation switch

Battery Chargers:

- Mastervolt Combi charger/inverter 12/2000
- Mastervolt Easy - Battery Monitor
- Mastervolt shunt.

Generator:

- Solar panel built into coachroof.

Shore Power:

- 240v Shore power.

Other Electrical:

- 20 mt shore power cable, fusebox, galvanic isolator and earth fault indicator

Plumbing Systems

Fresh Water & Water Heating System:

- Pressurized hot and cold water
- Hot water calorifier (engine or shore power)
- Fresh water filter

Bilge Pumps:

- 2 x Electric bilge pumps.
- Manual bilge pump.

Tankage

Fuel:

- Total capacity of 325 litres (71 imperial gallons) in stainless steel tanks

Fresh water:

- Total capacity of 400 litres (88 gallons) in 2 x stainless steel tanks.

Grey/Blackwater holding tanks:

- Total capacity of 55 litres (12 gallons) in 1 x stainless steel tank (direct to sea or deck pump out) with near full alarm

Navigation Equipment

- Raymarine autopilot type 1 with ST60 and SPX-10 course computer
- Raymarine ST60 wind, speed and depth flush mounted in cockpit
- Raymarine ST60 Graphic at Navigation Table
- Raymarine 240E VHF dual station - Cockpit and Navigation Table
- Raymarine C120W plotter, next to companionway.
- Raymarine AIS - 350 integrated with Raymarine plotter
- Raymarine 4KW 18" digital radar.
- Mast top Antigua combi antenna for VHF, radio and TV.
- Furuno Navtex
- Sea-me Radar enhancer

Domestic Equipment

Galley:

- 92 liter 12v refrigeration.
- Force 10 2-burner stove with oven and grill.
- Siemens microwave
- Double stainless steel sink.

Heads/Showers:

- Corian work surface
- 1 x WC manual

- 1 x Handheld shower.
- Odour filter on WC flush.
- Swim platform shower.

Heating & Ventilation:

- Eberspacher diesel heating/ventilation in all cabins and heads.

Entertainment:

- Pioneer Radio DVD/CD player, saloon speakers + Bose accousticmass 5 + iPod adapter
- Cockpit speakers.

Lighting:

- Reading lights in saloon and berths
- Overhead lighting throughout
- LED bulbs internally including hanging locker, cockpit and cockpit locker
- Chart light at navigation table.
- Lopolights (LED) Navigation lights.
- Deck lights

Accommodation

Summary of Accommodation:

The interior provides ample headroom, storage and comfort for 6 persons. Woodwork is of handcrafted polished mahogany with a satin finish. Flooring is of varnished teak on dampened aluminum stringers. Cream headlining. Professionally made loose high quality carpets throughout.

Description of layout from forwards:

Forward Cabin:

- 2 wide full size (2 mts) berths forward in Vee arrangement.
- Mattress and toppers
- Wardrobe and Cupboards.
- Seat
- Opening ports and hatch.
- Storage under seat and vee berth.
- Red coloured fabrics.
- Teak and holly sole.
- Headroom 1.9 mts

Saloon:

- Settees to port and starboard in red fabric with removable backs to make wider sea berths.
- Mahogany Drop leaf table with bottle storage within.
- Lockers.
- Bookshelves.
- Dorade vents
- Lee cloth
- Wempe Navigator clock and comfort instruments
- Headroom 1.95mts

Navigation Table:

- Forward facing chart table with storage within.
- Drawers and chart storage under seat.

Galley:

- Long galley.
- Force 10 - 2 burner stove, grill and oven
- 92 ltr top loading Fridge freezer
- Ample cupboards and storage.
- Glass and crockery storage
- Corian counter tops.
- Extra galley cupboard with sliding door

Heads Compartment:

- Corian counter and sink.
- Mixer tap.
- Wet locker (with vent from diesel heater, for drying).
- Teak shower floor.
- Shower drain pump.
- Headroom 1.9mts

Aft Cabin:

- Spacious Queen size double berth.
- Settee in red fabric
- Wardrobe and cupboards
- Mattress and Topper
- Opening windows and hatch.
- Headroom 1.75mts

Deck Equipment

Rig:

- Selden deck stepped 2-spreader aluminium mast.
- Lewmar traveller
- Adjustable genoa cars, lines lead to cockpit.
- In-mast furling, controlled from cockpit.
- Furlex headsail furling.
- Remove-able inner forestay
- Flag halyards.
- Windex.
- Rodkick boomvang.
- Backstay adjuster.
- Aluminium shroud rollers.
- Rigging cutter
- Fabric mast steps

Winches:

- Andersen self-tailing winches.
- 2 x Anderson 46 ST primary winches.
- 2 x Anderson 28 ST secondary winches.
- Winch handles.

Sails (All UK Syversen)

- Main
- Jib
- Code 0 on furler
- Gennaker with snuffer

- Storm Jib

General:

- Swim ladder.
- Lifeline gates.
- Toughened glass windshield, stainless steel frame with grab rails.
- Varnished flag pole.
- Varnished cockpit table; canvas stowage for washboards in locker.
- Stern shower
- Spares covering engine, rigging, fuses, heads etc

Anchoring & Mooring Equipment:

- Electric Anchor windlass below deck.
- 60m chain.
- 20 kg Delta anchor.
- Double anchor roller and bowsprit.
- Stainless Steel folding bow ladder
- Stainless steel protection at cleats.
- 7 x Fenders.
- 4 x Docklines.

Covers, Canvas & Cushions:

- Seats on sternrail.
- Full cockpit cover. Leather covered grab rails
- Kapok Cockpit cushions in carmine red
- Hide covered wheel with friction brake

Safety Equipment:

- Grab rails on windscreen.
- Life buoy
- Jackstays on deck and in cockpit
- Liferaft bracket
- Liferaft Zodiac 4 person valise Liferaft - new 2014
- Emergency Tiller

Fire-fighting equipment:

- Propane sniffer in galley.
- Fire extinguishers.

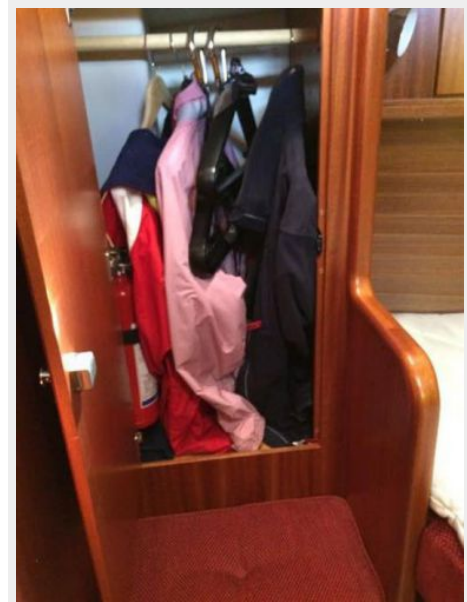
Exclusions

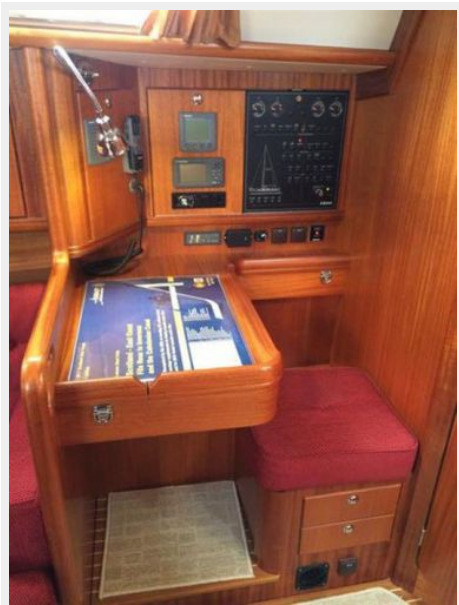
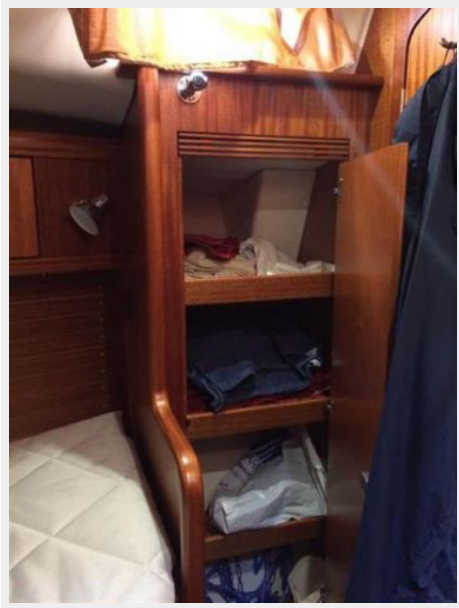
Owner's personal belongings.

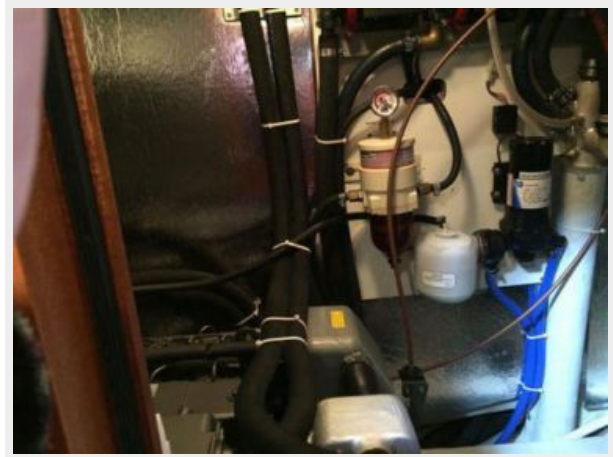
Disclaimer

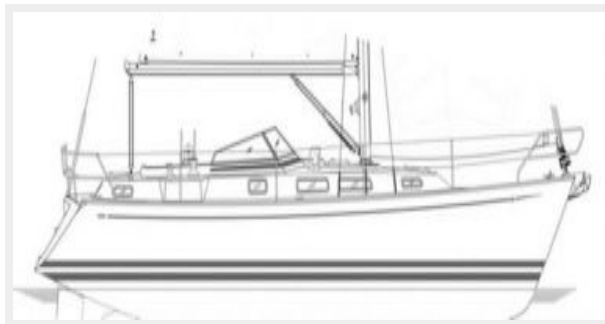
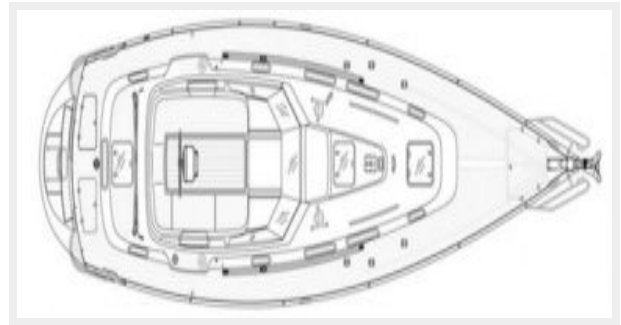
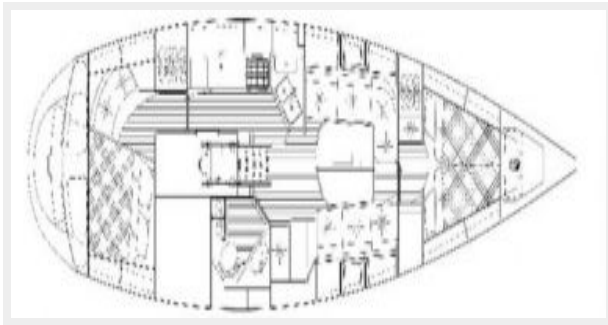
The Company offers the details of this vessel or yacht in good faith but cannot guarantee or warrant the accuracy of this information nor warrant the condition of the vessel. A buyer should instruct his representatives, agents, or his surveyors, to investigate such details as the buyer desires validated. This vessel or yacht is offered subject to prior sale, price change, or withdrawal without notice.

PHOTOS









CONTACTS

Andrey Shestakov, leading yacht broker of the sales department of Shestakov Yacht Sales Inc. Shestakov Yacht Sales Inc., the official representative of the Miami/Fort Lauderdale FL headquarters.

Contact details

Email: andrey@shestakovyachtsales.com

Web: shestakovyachtsales.com/en/

Telephones

USA: +1(954)274-4435

Office hours

Monday – Saturday: **9:00 - 21:00** EDT

Sunday: **closed**

Address



Harbour Towne Marina, 850 NE 3rd St,
STE 213, Dania, FL 33004