

SALAD DAYS — HOLLAND



Судостроитель: HOLLAND

Год постройки: 2004

Модель: Моторная яхта

Цена: **ЦЕНА ЯХТЫ ПО ЗАПРОСУ**

Местонахождение: United Kingdom

Длина общая: 43' 0" (13.11m)

Ширина: 13' 9" (4.19m)

Мин. осадка: 3' 9" (1.14m)

Крейс. скорость: 18 Kts. (21 MPH)

Макс. скорость: 35 Kts. (40 MPH)

Купить **SALAD DAYS — HOLLAND** а также выбрать подходящую вам яхту из нашего каталога яхт вам поможет опытный яхтенный брокер Андрей Шестаков. На сегодняшний день компания **Shestakov Yacht Sales Inc.** имеет большое количество яхт в собственном списке продаж, а также тесно сотрудничает со всеми крупными яхтенными производителями по всему миру.

Для того чтобы купить яхту **SALAD DAYS — HOLLAND** а также проконсультироваться по любому вопросу связанному с покупкой, продажей, чартером яхт позвоните по телефону **+7(918)465-66-44**.

ОГЛАВЛЕНИЕ

ОГЛАВЛЕНИЕ	2
ХАРАКТЕРИСТИКИ	4
Обзор	4
Основная информация	4
Размеры	4
Скорость, вместимость и масса	4
Размещение	5
Корпус и палуба	5
Информация о двигателе	5
ПОДРОБНОЕ ОПИСАНИЕ	6
Construction	6
Machinery	6
Electrical Systems	7
Plumbing Systems	8
Tankage	8
Helm Position	9
Domestic Equipment	10
Accommodation	11
Engine Bay	14
Deck Equipment	14
Broker's Comments	15
Исключения	16
Отказ от ответственности	16
ФОТОГРАФИИ	17
КОНТАКТЫ	25
Контактная информация	25
Телефоны	25
Время работы	25

Адрес

25

ХАРАКТЕРИСТИКИ

Обзор

Low hours, very high quality 2-owner (2004-launched) aft cabin semi-displacement Atlantic 42 motor-yacht built by Holland Boat. Twin 370HP Volvo Penta TAMD-63P-A diesels, Raymarine radar/plotters, Fischer Panda generator, Eberspacher cabin heating and many extras. Delightful and seriously good value!

Основная информация

Тип судна: Моторная яхта

Подкатегория: Semi-Displacement

Модельный год: 1998

Год постройки: 2004

Страна: United Kingdom

Размеры

Длина общая: 43' 0" (13.11m)

Длина по ватерлинии: 34' 2" (10.41m)

Ширина: 13' 9" (4.19m)

Мин. осадка: 3' 9" (1.14m)

Скорость, вместимость и масса

Крейс. скорость: 18 Kts. (21 MPH)

Дальность на крейсерской скорости:
250

Макс. скорость: 35 Kts. (40 MPH)

Водоизмещение: 26455.47144 Pounds

Вместимость воды: 120.462455712
Gallons

Вместимость сточного бака:
49.136001672 Gallons

Объем топливного бака: 178.3161351
Gallons

Размещение

Всего кают: 2

Всего коек: 6

Всего ком. состава: 2

Корпус и палуба

Материал корпуса: GRP

Материал палубы: GRP

Отделка корпуса: Plastic

Дизайнер корпуса: John A. Bennett & Associates

Информация о двигателе

Двигатели: 2

Производитель: Volvo Penta

Модель: TAMD 63P

Тип двигателя: Inboard

Тип топлива: Diesel

ПОДРОБНОЕ ОПИСАНИЕ

Construction

RCD Status: The yacht conforms with the essential safety requirements of Directive 94/25EC (Recreational Craft Directive) and is categorized B (6 people)

Hull, Deck & Superstructure Construction:

- Blue GRP hull and Ivory superstructure.
- Stainless steel ports and window frames.
- Teak laid cockpit and bathing platform.

Machinery

Engine & Gearboxes:

- 2 x Volvo Penta TAMD 63P-A (370hp each) six-cylinder diesel engines.
- 4-stroke, direct-injected, turbo-charged with aftercooler.
- Volvo Penta single lever engine controls.
- Direct shaft drive.
- Fuel and water separators.
- Twin bowl fuel changeover system fitted.

Maintenance & Performance:

- Engine Hours – 346 @ June 2015.
- Max speed – 25kts 1/3 water fuel.
- Cruising Speed – 18-20kts.
- Max range of approximately 250nm at 18kts, therefore a safe range of 200nm for 1000 lts.

Propulsion & Steering:

- Direct shaft drive.
- Vetus electric 80 kgf bow thruster.
- Vetus electric 80 kgf stern thruster.
- Hydrflex hydraulic steering.
- Bennett trim tabs.

Electrical Systems

Voltage Systems:

- 230V & 12V ring main throughout.
- 12V sockets at helm and adaptors for 24V system

Battery Banks:

- 2 x 120 Ah battery for engine starting.
- 6 x 160 Ah deep cycle batteries for domestic use.
- 2 x 120Ah bowthruster batteries.
- 2 x 120Ah sternthruster batteries.
- Battery changeover system for engine starting.

Battery Chargers:

- 75 Ah Mastervolt battery charger.

Alternators:

- Engine alternators.

Generator:

- Fischer Panda 6 Kva generator set (240 hours @ June 2015).

Shore Power:

- 30 Amp shoreline connections at the bow and stern.

Other Electrical:

- A circuit breaker panel is mounted in the saloon to isolate 230V and 24V systems.
- Remote battery isolating switches.
- 2500W Mastervolt Inverter.

Plumbing Systems

Fresh Water & Water Heating System:

- Jabsco diaphragm pump with 8 litre accumulator tank.
- Hot water supplied by way of calorifier which can be heated by the port engine whilst the engine is running, or by immersion heater, the calorifier is fitted with a temperature controlled valve to avoid overheating of the hot water.

Bilge Pumps:

- Large capacity automatic electric bilge pumps mounted under aft cabin, engine bay and under forward internal tray moulding which are activated by float switch or switch at helm.
- Manual bilge pump system in saloon and aft cabin wardrobe.

Tankage

Fuel:

- 2 x 675L stainless steel fuel tanks finished in white.
- 1340L (300gal) total.

Fresh water:

- Water tank fabricated in plastic.
- 456L (100gal) total

Blackwater holding tank:

- 186ltr (40gal) total.

Helm Position

- Full engine instrumentation.
- Fuel and water contents gauges.
- Raymarine DSC VHF.
- Raymarine RL80C radar/plotter with 4kW open array scanner.
- Raytheon ST6000+ Autopilot.
- Raymarine ST60 Speed.
- Raymarine ST60 Depth.
- Raymarine ST60 Rudder indicator.
- Raymarine ST60 Wind.
- Raymarine ST60 Multi.
- Ritchie Compass.
- Halyard exhaust alarm.
- Jabsco search light.
- Switch panel for bilge pumps, wipers, navigation lights, horn, battery changeover, night lights, demist fan, engine room lights, winch and trim tabs.
- 2 x 12v power points
- Clipper Navtex.
- Seafire extinguisher control panel.

Domestic Equipment

Galley:

- 75 litre, 24 volts (Vitrifrigo) refrigerator.
- Built-in combination microwave/convection oven and grill.
- Four-ring ceramic electric hob.
- Double sink with mixer taps.
- Extractor fan.
- Water tank level gauge.
- Washer/dryer (in aft cabin heads).

Heads/Showers:

- Tecma electric heads.
- Sea toilets with diverter valves to discharge either to sea or holding tank.
- Shower in forward and aft cabin.

Heating & Ventilation:

- Eberspacher diesel fired central heating (outlets in all cabins plus cockpit) – 2 control units.
- Extractor fans in heads/shower.

Entertainment:

- Sony CD/radio.
- Tracvision 4 automatic tracking aerial.
- Sky Digibox.
- LG flat screen TV (saloon).
- Philips DVD player.

- LG Flat-screen TV to aft cabin.

Lighting:

- Concealed lighting in galley.
- Concealed pelmet lighting, halogen down-lights and 2 x reading lights in aft and forward cabin.
- Recessed halogen lights.
- Halogen reading lights.
- Tube concealed lights.
- Fluorescent lights in engine bay.
- Low level and step lighting on aft deck.

Accommodation

Summary of Accommodation:

- High quality American cherry timber and veneer, matched throughout the vessel.
- Hilton Supreme aubergine carpet to dinette, Ege Yellow beige carpets to cabins and saloon
- Blond maple flooring to galley.
- Lewis & Co Paloma cream leather upholstery to dinette.
- Shalida Blue patterned upholstery to saloon.
- Serico Honey curtains throughout.
- Bed covers in Vivi Talia quilted fabric, headboards in Shalimar Silk material.

Description of layout:

Forward Cabin:

- King-size double bed with 125 mm mattress with storage facility under.

- High level storage lockers port/starboard.
- 1 x Full length hanging lockers.
- Vanity units and further locker space.
- 1 x 24V socket, 2 x 230V sockets.
- Escape hatch.

Forward Cabin En-suite:

- Vanity unit with marble effect vanity top.
- Shaving socket and mirror.
- Electric extractor.
- Heads and shower cubicle.

Dinette:

- C-shaped seating with rise and fall table to convert to occasional berth.
- Under seating storage.
- Outboard storage lockers.

Galley:

- Storage facilities at both high and low levels.
- Synthetic marble worktop.
- 1 x 24V socket, 2 x 230V sockets.
- Maple floor.
- Waste bin.

Saloon:

Port Side:

- Cocktail cabinet and sideboard unit.
- 1 x 230V socket, 1 x 24V socket.
- Electronic control panel by steps to aft cabin.

Starboard Side:

- C-shaped settee with stowage under.
- Coffee table in cherry and maple.
- Engine access through aft cabin steps and panels in floor.
- 1 x 24V socket, 1 x 230V socket.

Aft cabin:

- King-size double bed with 125mm mattress, access to steering under.
- High level storage lockers.
- Full length hanging locker.
- Drawer unit and further locker space.
- Escape hatch.
- 1 x 24 V socket, 2 x 230V sockets.
- Eberspacher control panel.
- Concealed Draper safe.

Aft cabin en-suite:

- Vanity unit with marble effect vanity top.
- Shaving socket and mirror.
- Full size separate shower cubicle.
- Washer / drier .

Engine Bay

- Gel coated throughout in white.
- Alloy tread plate floor.

Deck Equipment

General:

- Full set of navigation lights to include:- Remote control search light, riding light, anchor light, stern light and port/starboard navigation lights.
- Full length pulpit with twin stainless steel rails.
- Full length grab-rails on superstructure, allow safe passageway on side decks.
- Bathing platform ladder.
- Transom door fitted with latch.
- Aluminium extending boat-hook.
- Exterior lights in radar arch.

Anchoring & Mooring Equipment:

- 1000 Watt reversing winch with 15 fathoms of chain and 20kg Bruce anchor.
- Fenders.
- Mooring lines.
- 8 x Stainless steel 300 mm cleats.
- 2 x Stainless steel 200 mm cleats.
- Integrated fender stowage.
- Deck wash with fresh/sea water.

Covers, Canvas & Cushions:

- Full cockpit cover with zip panels allowing for a combination of uses, with aft cockpit shade.

- Navy vinyl cockpit upholstery.

Tender & Outboard:

- Stainless steel davits.
- Inflatable & outboard engine.

Safety Equipment:

- Life raft (service date unverified).

Fire-fighting equipment:

- Fire extinguisher and fire blanket in galley.
- FM-200 automatic fire extinguisher system.
- Handheld fire extinguisher at helm.

Broker's Comments

A voluminous layout in a modern and stylish design, the Atlantic 42 is at home either at sea or on inland waters.

Really nicely put together by Holland Boat and a very good John Bennett-designed hull, this Atlantic 42 has had two careful owners from new, with her first taking delivery in Southampton, February 2004. She is currently cruised from her base in Chichester Harbour and has been professionally maintained, and wintered ashore.

With a wholly self-contained aft cabin (with separate shower, and separate heads compartments), beautifully-finished forward double (again with ensuite heads/shower), two-level saloon and a great location for her galley opposite the dinette, this is a great cruising layout.

Power is supplied by a pair of shaft-drive 370HP Volvos, showing 346 hours run. These TAMD-63P-A's are great, turbo-charged, mechanically-governed and reliable cruising diesels – with a

smooth six-cylinder block and sensible economy. With 6 kVa generator, twin heating sets, washer-drier and good nav. kit – she is all set-up for European adventuring – with the stress of short-handed berthing relieved by bow and stern thusters.

“SALAD DAYS” has just been antifouled, polished up, re-anoded and has had her stern-gear de-scaled and polished, and will be stood ashore for ease of viewings and hull inspections. She is realistically priced, seriously for sale and we encourage your serious viewing of her.

Исключения

При продаже яхты исключаются личные вещи владельца.

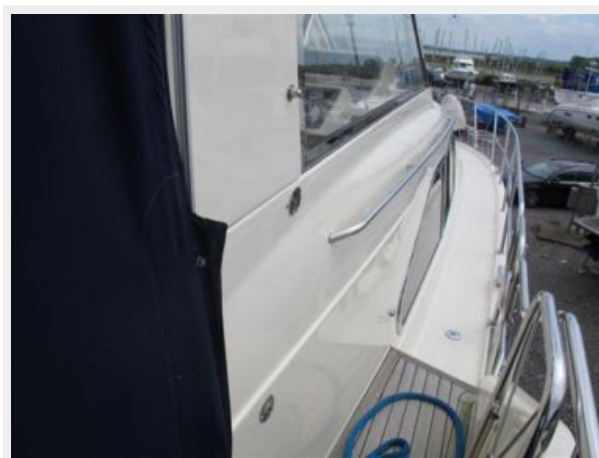
Отказ от ответственности

Компания предоставляет описание судна или яхты добросовестно, но не может гарантировать точность этой информации, а также не ручается за техническое состояние. Покупатель должен проинструктировать своих агентов или оценщиков исследовать представленную информацию более подробно, по собственному желанию. Продажа судна или яхты, изменение цены или снятие с продажи будет происходить без предварительного уведомления.

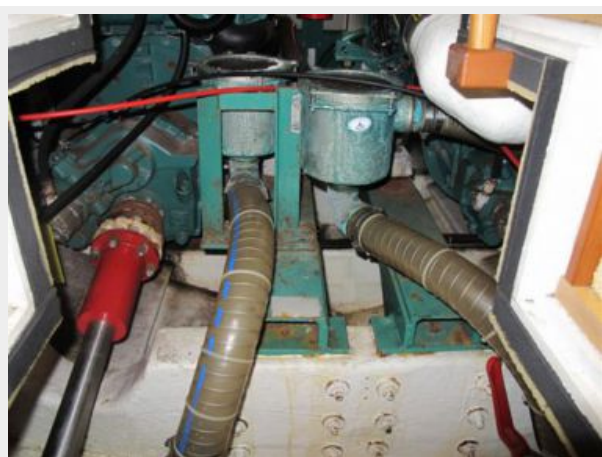
ФОТОГРАФИИ



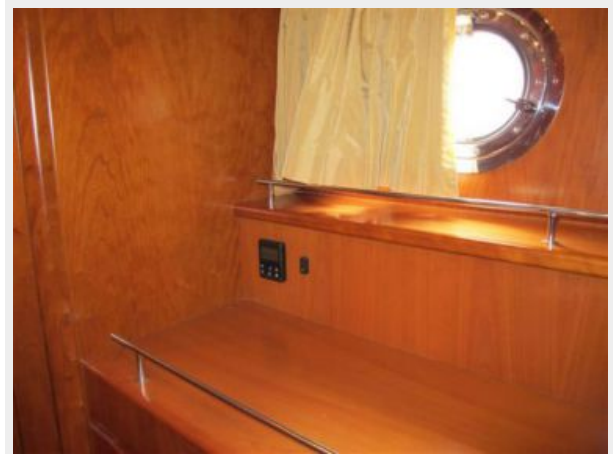














КОНТАКТЫ

Андрей Шестаков (Andrey Shestakov) – ведущий яхтенный брокер отдела продаж яхт и судов компании Shestakov Yacht Sales Inc. Официальный представитель Shestakov Yacht Sales Inc. для русскоговорящих клиентов в центральном офисе компании в Майами/Форт Лодердейл/Флорида/США.

Контактная информация

Email: andrey@shestakovyachtsales.com

Web: shestakovyachtsales.com

Телефоны

Краснодарский край: **+7(918)465-66-44**

США, Майами, Флорида: **+1(954)274-4435**

Время работы

Понедельник – Суббота: **9:00 - 21:00**
EDT

Воскресенье: **Закрыто**

Адрес



Harbour Towne Marina, 850 NE 3rd St,
STE 213, Dania, FL 33004