

EXCALIBUR — SELENE



Судостроитель: [SELENE](#)

Год постройки: 2008

Модель: Траулер

Цена: ЦЕНА ЯХТЫ ПО ЗАПРОСУ

Местонахождение: United States

Длина общая: 57' 0" (17.37m)

Ширина: 17' 0" (5.18m)

Мин. осадка: 5' 9" (1.75m)

Крейс. скорость: 8 Kts. (9 MPH)

Макс. скорость: 12 Kts. (14 MPH)

Купить **EXCALIBUR — SELENE** а также выбрать подходящую вам яхту из нашего каталога яхт вам поможет опытный яхтенный брокер Андрей Шестаков. На сегодняшний день компания **Shestakov Yacht Sales Inc.** имеет большое количество яхт в собственном списке продаж, а также тесно сотрудничает со всеми крупными яхтенными производителями по всему миру.

Для того чтобы купить яхту **EXCALIBUR — SELENE** а также проконсультироваться по любому вопросу связанному с покупкой, продажей, чартером яхт позвоните по телефону **+7(918)465-66-44**.

ОГЛАВЛЕНИЕ

ОГЛАВЛЕНИЕ	2
ХАРАКТЕРИСТИКИ	5
Обзор	5
Основная информация	5
Размеры	5
Скорость, вместимость и масса	6
Размещение	6
Корпус и палуба	6
Информация о двигателе	6
ПОДРОБНОЕ ОПИСАНИЕ	7
Introduction	7
Highlights Include:	7
Salon	8
Galley	8
Pilothouse	8
Master Stateroom	9
Ensuite Master Head	9
VIP Stateroom	9
Guest Stateroom	9
Guest Head	9
Electronics	10
Entertainment Equipment	10
Electrical	10
Mechanical	10
Deck & Lazarette	11
Lazarette	11
Flybridge	11
General	12

Equipment	12
Exclusions	12
Исключения	12
Отказ от ответственности	12
ФОТОГРАФИИ	13
Excalibur in Slip	13
Aft Deck	13
Salon Looking Aft	13
Salon Looking Forward	13
Galley	14
Galley	14
Master Stateroom	14
Master Stateroom, Port	14
Master Head	14
Master Stateroom, Starboard	14
Master Shower	15
VIP Stateroom	15
Guest Stateroom	15
Guest Stateroom Desk	15
Guest Head	16
Guest Stall Shower	16
Asko Washer and Dryer	16
Pilothouse Helm	16
Pilothouse Forward	17
Pilothouse Settee	17
Flybridge Helm	17
Flybridge Entertainment Area	17
Ground Tackle	17
Flybridge Boat Deck	17

Tender Console Helm	18
Equipment Area & Lazarette Door	18
Fuel filtration and Port Engine Room Access	18
Engine Room Looking Aft	18
EXCALIBUR Astern	19
КОНТАКТЫ	20
Контактная информация	20
Телефоны	20
Время работы	20
Адрес	20

ХАРАКТЕРИСТИКИ

Обзор

Amazing opportunity to own a 57' Selene Ocean Trawler with an extensive equipment list and many custom features which will appeal to all buyers whether experienced cruisers or those just beginning the process.

The current owner of this 2009 yacht purchased her from the original owner just after **EXCALIBUR** was commissioned as a new boat in Oregon. He has cruised her from Seattle to Maine and back to Florida and now offers her for immediate sale.

She has been updated and maintained to the highest standards both mechanically and cosmetically always gathering a crowd when arriving in port. Take advantage of this opportunity to own a "like new" Selene without going through protracted factory build times and the tedious commissioning process.

Основная информация

Тип судна: Траулер

Подкатегория: Long Range Cruiser

Модельный год: 2009

Год постройки: 2008

Страна: United States

Верх: Hardtop

Открытая палуба мостика: Да

Размеры

Длина общая: 57' 0" (17.37m)

Длина по ватерлинии: 55' 0" (16.76m)

Ширина: 17' 0" (5.18m)

Мин. осадка: 5' 9" (1.75m)

Длина привального бруса: 59' 4"
(18.08m)

Скорость, вместимость и масса

Крейс. скорость: 8 Kts. (9 MPH)

Макс. скорость: 12 Kts. (14 MPH)

Дальность на макс. скорости: 2000 Kts. **Чистый вес:** 56 Pounds

Вместимость воды: 450 Gallons

Вместимость сточного бака: 150 Gallons

Объем топливного бака: 1600 Gallons

Размещение

Всего кают: 3

Спальные места: 6

Всего ком. состава: 2

Корпус и палуба

Материал корпуса: Fiberglass

Комплектация корпуса: Full Displacement

Дизайнер корпуса: Howard Chen

Дизайнер экстерьера: Howard Chen

Дизайнер интерьера: Howard Chen

Информация о двигателе

Двигатели: 1

Производитель: Cummins

Модель: QSM11

Тип двигателя: Inboard

Тип топлива: Diesel

ПОДРОБНОЕ ОПИСАНИЕ

Introduction

EXCALIBUR, a 2009 Selene 57 was custom built for Joseph Gerber, Jr. of the Gerber Knife Company to fulfill his longtime dream of cruising the world. Unfortunately due to life changes during the build of **EXCALIBUR** he had to sell her shortly after delivery. While unfortunate for Mr. Gerber this change in plans created an opportunity for the current owner who purchased **EXCALIBUR** as an almost new boat in Portland, Oregon to realize his dream.

And so the journey aboard **EXCALIBUR** began taking her new owner and guests on a 6-year adventure first cruising the Pacific Northwest from Oregon through various ports of Washington state, the San Juan Islands and up into northern British Columbia. After exploring these cruising grounds they headed south, working their way down the California coast into Mexico and Central America, through the Panama Canal, then across the Gulf of Mexico discovering more unique ports of call. The journey continued into Florida and up and down the East Coast to Maine and the Canadian Maritimes. She has traveled up the East Coast extensively including the Bahamas and Caribbean proving her rugged design and build to be capable of comfortable cruising under any and all conditions.

It is now time for the current owner to turn the page on this stage of his life and move on to the next chapter creating an excellent opportunity for someone to purchase and step aboard **EXCALIBUR** for the journey of their dreams. She is a turnkey vessel that has been maintained from stem to stern and top to bottom without concern for expense and she shows that care from the glistening teak and shining gelcoat to the remotest areas of her bilge. She boasts all of the creature comforts of a fine home and has been constantly updated. Her appearance belies the water that has passed under her keel and her 3000 hours of experience are apparent only on the hour meter looking better than most 2 year old yachts with "low hours". As you walk down the dock her fresh appearance attracts you right away as you barely notice the other boats you pass and her warm, rich teak interior draws you in. Her ample aft deck says let's sit awhile. Her wide protected walk around decks, Portuguese Bridge and inverted PH windshields convey **EXCALIBUR's** go anywhere anytime capabilities hidden under her beautiful yacht appearance and finish.

Once you step aboard **EXCALIBUR** you will immediately understand why discerning yachtsmen and women worldwide chose Selene for their Long Range Cruising yachts and **EXCALIBUR** is the finest example of a Selene Ocean Trawler this broker has been aboard.

Don't Miss this opportunity to purchase and own an outstanding example of a true Long Range Trawler Yacht built to cruise wherever your heart and mind desire. She is "standing tall" awaiting your inspection. Give us a call and begin your next adventure!

Highlights Include:

Balance of manufacturer's warranty is transferable to new owner Sylvia Bolton custom interior design and soft goods Wesmar hydraulic "Get Home" system off of generator Custom factory installed hardtop Full array of meticulously planned and appointed Nav Electronics, commissioned by Yacht Masters in Seattle, WA. Nautica 14' Wide body yacht tender Steelhead 1500 lb davit Teak aft deck, covered side decks and swim platform deck All other exterior decks are FRP Non-Skid in a contrasting anti-glare Moondust color Yacht Controller, wireless docking controls for engine and thrusters Side Power bow and stern thrusters Sea Recovery 900 gpd watermaker Kabola diesel heating system Stainless steel window frame package

Salon

Completely custom designed interior decor by Sylvia Bolton: soft goods, spreads, upholstery, carpets, valances, etc. Secondary stairway down to the Master Stateroom and engine room access from galley/salon L-shaped settee with storage underneath (converts to extra berth). Features custom upholstery and throw pillows Hi-lo gloss teak table(s) (2) Leather club chairs with ottomans that store within the chair frame Custom side-table with twin 3-way reading lamps Storage drawers and cabinets Reading lights Custom fabric valances Custom designed display center with lighting connections, clear shelves, and single glass pane, aft starboard Cantalupi dome lights with dimmers Teak grab rail overhead Teak and holly sole Custom carpet hand cut to match floor, laid loose Bamboo blinds Opening windows with screens Hinged floor hatch for secondary access to engine room Rope lighting Sony 32" LCD flat screen TV with wood panel cover when not in use Entertainment center with Dish Network receiver Dutch door to cockpit and side decks from pilothouse

Galley

Large U-shaped galley Blue pearl granite counter tops, bar tops, and backsplash Sea Freeze AC/DC refrigerator and freezer GE microwave/convection oven Force 10 3-burner stove and oven Meile dishwasher Franke extra large single basin stainless sink with single lever Grohe faucet Icemaker Insinkerator filters instant hot and cold water dispenser Exhaust fan Storage cabinets Under-counter storage drawers and cabinets Trash bin Rope lighting Broan trash compactor Drinking water filter system Access hatch and ladder to port side of engine room

Pilothouse

Full helm station (2) Stidd full size helm seats with polished stainless steel bases Large raised leather L-shaped settee with table aft of helm Stairwell access to flybridge Stairwell access to accommodations Chart table with chart drawer and chart light Dutch doors, port and starboard Danforth compass Full suite of navigational electronics (see "Electronics") VDO rudder angle indicator Electric fuel and water tank gauges Bow and stern thruster controls Bilge and high water alarm and indicator panel Aetna red LED tachometer at helm Exalto windshield wipers with intermittent control Stereo speakers with separate control switch Sirius XM radio Overhead

hatch with Oceanaire insect screen and shade Red night lights at helm and navigation station(s)

Master Stateroom

Centerline Queen berth Sony 26" flat screen TV mounted in forward recess with Logitech universal remote (wood panel to cover when not in use) Cedar-lined lockers with automatic lighting Bureau-style drawer storage Reading lights Teak-framed mirror (2) Stainless steel opening port lights, with screens Cantalupi overhead lights with dimmers Custom master berth headboard

Ensuite Master Head

Tecma toilet Grohe fixtures Large stall shower with clear hinged door, teak slat seat and floor grating Vanity with sink Blue Pearl granite counter tops Single lever Grohe faucets at sink and shower Medicine cabinet Exhaust fan Teak framed mirror (2) Stainless steel opening port lights with screens Blue Pearl and Cream granite checked tile floor.

VIP Stateroom

Centerline Queen berth with drawer storage underneath Samsung 20" flat screen TV with wood panel to cover when not in use Storage cabinets and drawers throughout Reading lights (2) Cedar-lined hanging lockers with automatic lighting (4) Opening port lights with screens Overhead hatch with Oceanair screen and shade and ladder Escape ladder

Guest Stateroom

(2) Single berths (one fore and aft, other is athwartships) Upper berth can be pulled out and expanded with removable bolster Removable back bolster for lower berth Built-in desk Teak wood desk chair with custom upholstered seat Bookcase Reading lights Cedar-lined hanging locker Under-berth drawer storage Storage cabinets (2) Stainless steel opening port lights with screens Wireless printer

Guest Head

Tecma toilet Grohe fixtures Stall shower with hinged glass door Vanity with sink Blue Pearl granite counter tops Single lever Grohe faucets on shower and sink Teak trimmed mirror Fan Storage cabinets (2) Opening port lights with screens Blue Pearl and Cream granite checked tile floor

Electronics

(2) Dell dimension computers, pilothouse (2) Interlink wireless keyboards and mice (2) Nauticomp waterproof panel mount mouse controls at flybridge GPS is interfaced into engine controller (2) Argonaut sunlight viewable, waterproof 15" screens on flybridge Nobeltec MaxPro 10 Admiral software (2 licenses) Nobeltec Deluxe Passport charts for Olympia-San Juan Islands and Vancouver Island Nobeltec 6 kW 6.5' open array radar Nobeltec PC sounder with bronze dual frequency transducer for speed, depth, and water temperature Nobeltec AIS 100 receiver with smart VHF splitter XM weather receiver for weather overlays on Nobeltec charts NMEA 2000 system with color displays in the pilothouse, flybridge, and master stateroom Maretron speed, depth, and temperature sensor Maretron GPS Maretron ultrasonic weather station Maretron NMEA 2000 Simnet bridge for inputting heading into the autopilot KVH M-7 stabilized TV antenna ICOM 504 VHF with antenna with hailer horn and RAM mic BroadBand Express long range Wi-Fi antenna and radio to connect to router Yacht Controller wireless remote, interfaced with Side Power thrusters ComNav autopilot, with fixed head in pilothouse and flybridge, plus wire remote usable at both locations Video camera system with (1) camera in the engine room and (2) cameras aft

Entertainment Equipment

Sony 32" LCD TV in salon Sony 26" LCD TV in master stateroom Samsung 20" LCD TV in VIP stateroom Surround sound in salon (3) Toshiba DVD players (salon, master stateroom, and VIP stateroom) Slave for salon Dish Network to VIP stateroom KVH satellite TV antenna Alpine CD/DVD player with FM radio Niles speaker distribution hub Speakers with separate volume control throughout: salon, pilothouse, master stateroom, VIP stateroom, flybridge, cockpit, and foredeck XM satellite radio receiver Trax UFO TV antenna

Electrical

Northern Lights 20 kW generator, 2715 hours 24V DC and 110/240V AC systems Electrical panel with digital gauges at pilothouse helm station 80-amp engine alternator Balmar 220-amp alternator for house battery bank Heart PathMaker emergency battery parallel switch 24-12 V DC converter to run all 12V electronics on the boat Mastervolt inverter/charger system for 24V DC system 4 kW Inverter system Mastervolt charger for starting batteries Vision AGM batteries for house service, engine and generator start 50-Amp shore power inlets (foredeck) Glendinning Cablemaster shore power cord retrieval system with 75' of 50/240 shore cable (transom) Hubble AC outlets throughout GFCI outlets in heads and at flybridge

Mechanical

Single Cummins QSM11, main engine, 455 hp (4) Rule automatic bilge pumps (1) Whale manual bilge pump Electronic engine controls Wesmar hydraulic "Get Home" system with proportional

controls off of the generator Racor 75/1000 Max dual fuel filters for main engine Racor 900MA dual fuel filter for generator ESI fuel polishing system Magnetic fuel sight gauges in engine room Side Power 15 hp bow and stern thruster, continuous duty Torrid 40-gallon hot water heater PYI driplless shaft seal Nibral faster 4-blade propeller on 3" diameter shaft Jabsco 4" engine room blowers Reverso oil change pump for main engine, transmission, and generator Spurs line cutter on shaft Shower sump tanks with Rule pumps and Ultra float switches Fireboy automatic fire suppression system in engine room Central vacuum system June 2015 - transmission, generator, and engine had oil, filters, and zincs changed. There is a log book for all maintenance done to the vessel.

Deck & Lazarette

Yacht Controller for engine and thrusters docking control away from the helm Hull is painted off-white Awlgrip Teak aft deck, covered side decks and swim platform deck Contrasting Non-Skid anti-glare FRP foredeck and flybridge decks Ideal 3500# horizontal windlass Auto anchor chain counters at each helm station CQR 75 lb. anchor with 300' chain rode Bruce 110 lb anchor with 300' chain rode Fresh water and raw water wash down on foredeck Raw water wash down in cockpit Fiberglass bow pulpit Stainless steel hawse holes/cleats Stainless steel Sampson post 8" Ship's bell (4) Each stainless steel N-shaped rails on transom step Hot/cold shower at transom Swim ladder Recessed grab bar on transom step (2) Each stainless steel fold-down dinghy cleats on transom step Kahlenberg air horns Stainless steel framed window system ACR Satelllite2 406 MHz EPIRB (manually deployed) Storage cabinets in FRP stairwell to flybridge Molded fiberglass seat on foredeck with cushion and canvas cover Storage cabinets in Portuguese bridge Teak cap-rail with canvas covers Fenders and lines Coast Guard safety package

Lazarette

Grunert 9 cu. ft. cold plate freezer Sea Recovery 900 gpd watermaker with auto back flush Work bench Tool box and tools Cabinet for spare parts storage with spare parts Accessible via deck hatch or engine room via watertight door with window Kabola diesel hot water furnace Custom ladder for increased safety, with wider steps and a gentler angle than the standard Selene lazarette ladder Hooks on lazarette hatch for lines, shore power adapters, etc.

Flybridge

Full navigation station with full electronics (see "Electronics") Todd dual helm seats Chart table L-shaped settee with storage underneath and Sunbrella cushions. Custom throw pillows. FRP table Canvas weather covers for settee and helm seat, tender and outboard, teak cap-rails, forward seat (main deck), aft deck flybridge stairs Integrated propane Force go BBQ Wet bar with sink and storage underneath Domestic AC/DC drink fridge Stereo speakers Custom factory installed hard top Steelhead 1500 lb. hydraulic davit Nautica 14' Wide Body yacht tender with

Yamaha 60 hp outboard with VHF, sounder, GPS-plotter, and pop-up cleats, and 30/gal. fuel tank
Dinghy chocks and tie down Fresh water wash down Weatherproof AC outlet Canvas and plastic
"tent" for aft stairwell between cockpit and flybridge

General

Asko stacked washer and dryer

Equipment

Wesmar stabilizers (5) Zone air conditioning Flir 625 with (2) cameras with pilothouse and
flybridge controls (2) Perko rod holders in cockpit cap-rail Coax connection at flybridge with Sony
20" TV Pod holders in salon and pilothouse (2) LED spreaders/flood lights SAT phone Dual 504
VHF with separate antennas and hailer/ram mic (6) Pilothouse windshield covers (2) Spot lights
with pilothouse and bridge controls (4) Underwater lights with remote AIS receiver and AIS
transceiver Transferable Cummins engine warranty All fenders and lines All life preservers All
tools and electrical cords All cleaning supplies All linens

Exclusions

Personal items and clothing SUP boards Golf clubs Fishing poles Teak deck set Personal
decorative items Painting in master stateroom Movies, books, and music CD's (2) Electric bikes

Исключения

При продаже яхты исключаются личные вещи владельца.

Отказ от ответственности

Компания предоставляет описание судна или яхты добросовестно, но не может
гарантировать точность этой информации, а также не ручается за техническое
состояние. Покупатель должен проинструктировать своих агентов или оценщиков
исследовать представленную информацию более подробно, по собственному желанию.
Продажа судна или яхты, изменение цены или снятие с продажи будет происходить без
предварительного уведомления.

ФОТОГРАФИИ

Excalibur in Slip



Aft Deck



Salon Looking Forward



Salon Looking Aft



Galley



Galley



Master Stateroom



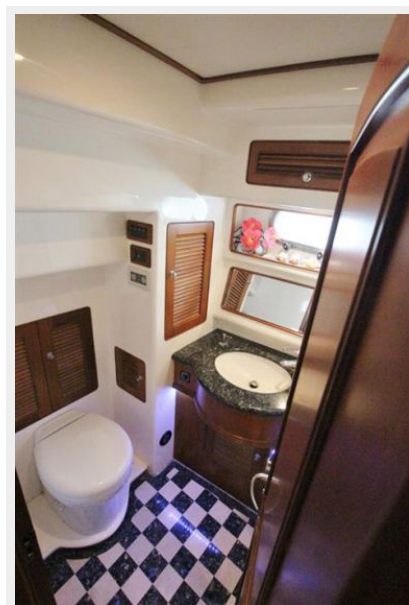
Master Stateroom, Port



Master Stateroom, Starboard



Master Head



Master Shower



VIP Stateroom



Guest Stateroom



Guest Stateroom Desk



Guest Head



Guest Stall Shower



Asko Washer and Dryer



Pilothouse Helm



Pilothouse Forward



Pilothouse Settee



Flybridge Entertainment Area



Flybridge Helm



Ground Tackle



Flybridge Boat Deck



Tender Console Helm



Equipment Area & Lazarette Door



Fuel filtration and Port Engine Room Access



Engine Room Looking Aft



EXCALIBUR Astern



КОНТАКТЫ

Андрей Шестаков (Andrey Shestakov) – ведущий яхтенный брокер отдела продаж яхт и судов компании Shestakov Yacht Sales Inc. Официальный представитель Shestakov Yacht Sales Inc. для русскоговорящих клиентов в центральном офисе компании в Майами/Форт Лодердейл/Флорида/США.

Контактная информация

Email: andrey@shestakovyachtsales.com

Web: shestakovyachtsales.com

Телефоны

Краснодарский край: **+7(918)465-66-44**

США, Майами, Флорида: **+1(954)274-4435**

Время работы

Понедельник – Суббота: **9:00 - 21:00**
EDT

Воскресенье: **Закрето**

Адрес



Harbour Towne Marina, 850 NE 3rd St,
STE 213, Dania, FL 33004