

## TIMELESS — HARDIN



**Судостроитель:** HARDIN

**Год постройки:** 1980

**Модель:** Крейсерская яхта

**Цена:** **ЦЕНА ЯХТЫ ПО ЗАПРОСУ**

**Местонахождение:** United States

**Длина общая:** 44' 10" (13.67m)

**Ширина:** 13' 4" (4.06m)

**Макс. осадка:** 5' 6" (1.68m)

**Крейс. скорость:** 6 Kts. (7 MPH)

**Макс. скорость:** 8 Kts. (9 MPH)

Купить **Timeless — HARDIN** а также выбрать подходящую вам яхту из нашего каталога яхт вам поможет опытный яхтенный брокер Андрей Шестаков. На сегодняшний день компания **Shestakov Yacht Sales Inc.** имеет большое количество яхт в собственном списке продаж, а также тесно сотрудничает со всеми крупными яхтенными производителями по всему миру.

Для того чтобы купить яхту **Timeless — HARDIN** а также проконсультироваться по любому вопросу связанному с покупкой, продажей, чартером яхт позвоните по телефону **+7(918)465-66-44**.

# ОГЛАВЛЕНИЕ

ОГЛАВЛЕНИЕ	2
ХАРАКТЕРИСТИКИ	3
Обзор	3
Основная информация	3
Размеры	3
Скорость, вместимость и масса	3
Размещение	4
Корпус и палуба	4
Информация о двигателе	4
ПОДРОБНОЕ ОПИСАНИЕ	5
Accommodations	5
Galley	5
Electronics	5
Electrical Equipment	6
Deck and Hull	6
Sails and Rigging	6
Other	6
Исключения	6
Отказ от ответственности	7
ФОТОГРАФИИ	8
КОНТАКТЫ	12
Контактная информация	12
Телефоны	12
Время работы	12
Адрес	12

# ХАРАКТЕРИСТИКИ

## Обзор

**OFFERS ENCOURAGED - THIS BOAT NEEDS SOME WORK - PLEASE CALL FOR DETAILS** This classic Hardin 45 CC is a rare offering in the Northeast. With a full keel, staysail ketch rig and a roomy 4-cabin layout, the Hardin 45 was designed to be the largest, most comfortable extended cruiser that can be sailed by a cruising couple.

Accommodations on *Timeless* are commodious. Two walk-throughs, two heads, 4 separate sleeping cabins combined with a large main cabin provide ample space for a cruising family, liveaboard, or owner-operated charter boat. And the massive storage capacity is ideal for extended cruising. Owners are selling because they are unable to use the boat as much as they'd like and offers are encouraged.

## Основная информация

**Тип судна:** Крейсерская яхта

**Подкатегория:** Крейсерский кеч

**Модельный год:** 1980

**Год постройки:** 1980

**Страна:** United States

## Размеры

**Длина общая:** 44' 10" (13.67m)

**Длина по ватерлинии:** 34' 6" (10.52m)

**Ширина:** 13' 4" (4.06m)

**Макс. осадка:** 5' 6" (1.68m)

## Скорость, вместимость и масса

**Крейс. скорость:** 6 Kts. (7 MPH)

**Крейсерская скорость поворота:** 1750 Kts.

**Макс. скорость:** 8 Kts. (9 MPH)

**Водоизмещение:** 32000 Pounds

**Вместимость воды:** 200 Gallons

**Объем топливного бака:** 200 Gallons

## Размещение

---

Всего кают: 4

## Корпус и палуба

---

Материал корпуса: Fiberglass

Материал палубы: Fiberglass Sandwich

Комплектация корпуса: Full  
Displacement

## Информация о двигателе

---

Двигатели: 1

Производитель: Ford Lehman

Модель: 80

Тип двигателя: Inboard

Тип топлива: Diesel

---

# ПОДРОБНОЕ ОПИСАНИЕ

---

## Accommodations

---

Timeless features the 4-cabin layout with accommodations for 8. Starting forward, the forward cabin features two single bunks with access to the chain locker forward. Storage under each bunk. Large hanging locker aft to port.

Aft to starboard is a large guest cabin with queen size berth and storage under, opposite to port is a small dressing seat and a large hanging locker,

Just aft to port is the forward head featuring an electric toilet, marble counter, SS sink, vanity cabinet, and pull-out shower.

Situated one step up from the two forward cabins is the large main cabin with L-shaped settee to starboard. There is plenty of storage space beneath the settee and additional storage cabinets are built in above and outboard of the settee. Across from the dinette to port are two free-standing chairs (secured with lanyard) which can be moved to any location. Also to port is a large counter/workbench and Nav station with large storage drawers & lockers under and behind. The main cabin features a beautiful varnished parquet floor, a teak & tile dining table with bottle locker under, a beautifully crafted wine locker, a shipmate charcoal cabin heater, oil lamps and more.

Aft to port is the Galley situated in the walkthrough to the aft cabin. This area also provides access to the engine room.

Aft to starboard is the 'Captains' cabin featuring a double berth, storage, and direct access to the cockpit through an overhead hatch. Continuing aft is another head with electric toilet, marble counter, vanity cabinet & shower.

Continuing aft is the palatial master cabin with queen size bunk, transom port lights, access to aft head, access to steering gear under, several drawers and two hanging lockers to port.

## Galley

---

Galley located in port walk-through, convenient to the companionway. There is a large hatch overhead that opens into the cockpit for serving up food & beverages. 3-burner LPG stove w/ oven. Large propane locker on aft deck. Large ice box with 12V refrigeration (in need of repair) Double SST sink w/ H/C pressure water Large amounts of storage & shelving outboard of galley stove & sink

## Electronics

---

Uniden UM525 VHF with remote mic. Standard Horizon Eclipse secondary VHF Signet Depth & Speed in cockpit Standard Horizon wind speed/direction in cockpit Raytheon radar, helm display Garmin chartplotter, helm display Wagner Hydraulic Autopilot (needs repair) Ritchie binnacle compass, excellent condition

---

## Electrical Equipment

---

AC shore power system Batteries in two banks: 1 for engine (2 wet cell), 2nd for house (4 6-volt) Battery charger 200W inverter Power windlass New Jabsco bilge pump Electric toilets (2) Jensen AM/FM stereo

---

## Deck and Hull

---

Full keel, Solid glass hull, white gelcoat, green shear stripe. SS bow pulpit with teak platform and twin rollers for ground tackle Powered windlass with foot switch Ground tackle includes a bruce anchor with all-chain rode. A secondary Danforth style anchor with chain/nylon rode. Large teak hatch forward. Deck features beige non-skid fiberglass, high bulwarks with teak caprail, a teak butterfly hatch mid-ship, large, secure center cockpit and a beautiful teak taff rail around the aft deck. Two cowl vents midship Solar vent and two opening hatches over master cabin Dinghy davits mounted aft Large propane locker on aft deck Teak cockpit bench seats Bench seats open to cabin below Pedestal mounted steering wheel Cockpit cushions Dodger

---

## Sails and Rigging

---

**SAILS:** 2012 Dacron Mainsail by Doyle, excellent Dacron Staysail & Mizzen by Doyle, new within last 8 years, good Jib, older, serviceable Light air geniker Unused storm trysail Older sails available for Jib, staysail & mizzen

**RIGGING:** Cutter Ketch Rig Deck-stepped Spruce spars, painted white Mast steps on main mast Wire rigging, age unknown Profurl Jib furler Staysail is hank-on, club footed, with canvas cover

---

## Other

---

Many spare parts available, too many to list 8-man Avon Liferaft, older, needs inspection Adequate inventory of dock lines and fenders

Personal effects (e.g. artwork, clothing, dishes, linens etc) are not included, some of which may appear in the photographs.

---

## Исключения

---

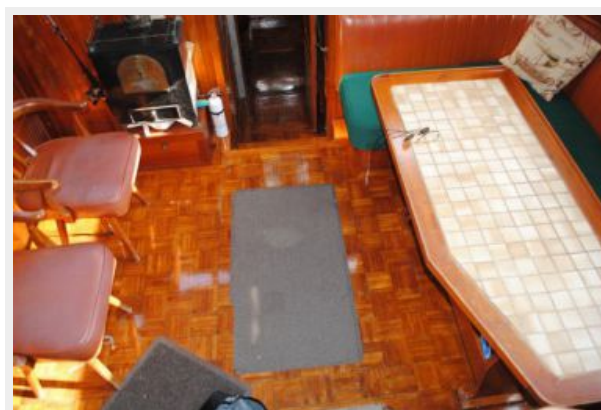
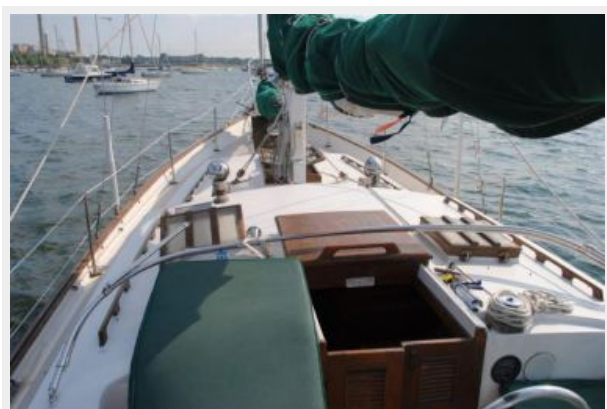
При продаже яхты исключаются личные вещи владельца.

## Отказ от ответственности

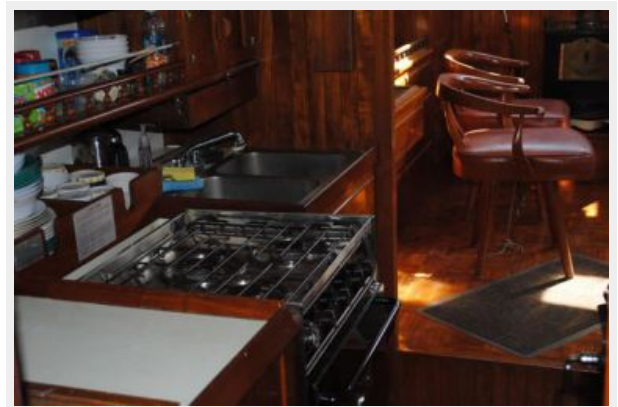
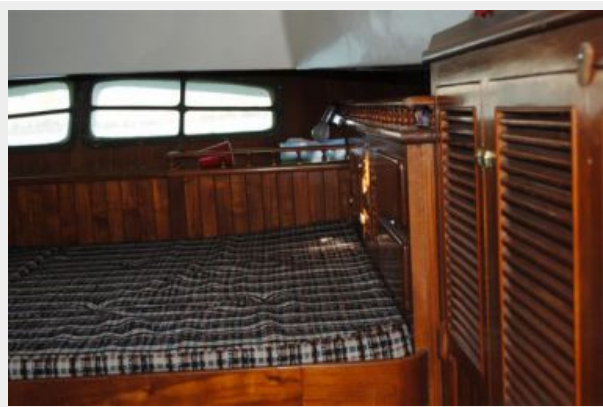
---

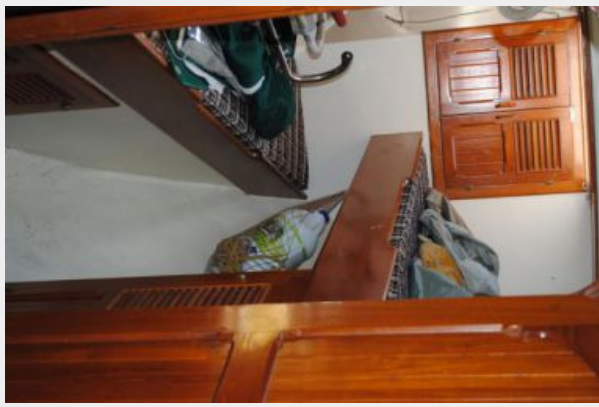
Компания предоставляет описание судна или яхты добросовестно, но не может гарантировать точность этой информации, а также не ручается за техническое состояние. Покупатель должен проинструктировать своих агентов или оценщиков исследовать представленную информацию более подробно, по собственному желанию. Продажа судна или яхты, изменение цены или снятие с продажи будет происходить без предварительного уведомления.

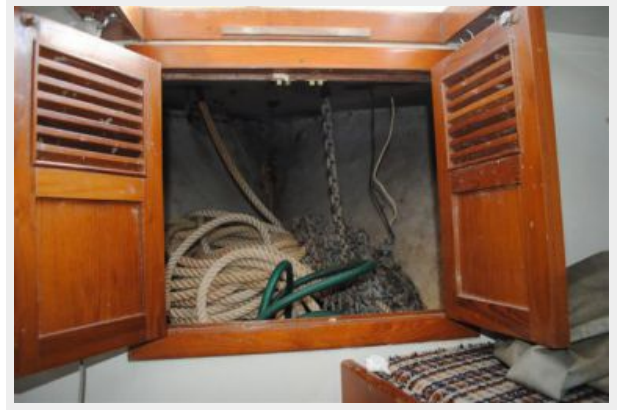
# ФОТОГРАФИИ











# КОНТАКТЫ

---

Андрей Шестаков (Andrey Shestakov) – ведущий яхтенный брокер отдела продаж яхт и судов компании Shestakov Yacht Sales Inc. Официальный представитель Shestakov Yacht Sales Inc. для русскоговорящих клиентов в центральном офисе компании в Майами/Форт Лодердейл/Флорида/США.

## Контактная информация

---

Email: [andrey@shestakovyachtsales.com](mailto:andrey@shestakovyachtsales.com)

Web: [shestakovyachtsales.com](http://shestakovyachtsales.com)

## Телефоны

---

Краснодарский край: **+7(918)465-66-44**

США, Майами, Флорида: **+1(954)274-4435**

## Время работы

---

Понедельник – Суббота: **9:00 - 21:00**  
EDT

Воскресенье: **Закрито**

## Адрес

---



Harbour Towne Marina, 850 NE 3rd St,  
STE 213, Dania, FL 33004