

ENDLESS SUMMER — MARINE TRADER



Судостроитель: MARINE TRADER

Год постройки: 1989

Модель: Крейсер

Цена: ЦЕНА ЯХТЫ ПО ЗАПРОСУ

Местонахождение: United States

Длина общая: 42' 0" (12.80m)

Ширина: 14' 11" (4.55m)

Мин. осадка: 3' 10" (1.17m)

Купить **Endless Summer — MARINE TRADER** а также выбрать подходящую вам яхту из нашего каталога яхт вам поможет опытный яхтенный брокер Андрей Шестаков. На сегодняшний день компания **Shestakov Yacht Sales Inc.** имеет большое количество яхт в собственном списке продаж, а также тесно сотрудничает со всеми крупными яхтенными производителями по всему миру.

Для того чтобы купить яхту **Endless Summer — MARINE TRADER** а также проконсультироваться по любому вопросу связанному с покупкой, продажей, чартером яхт позвоните по телефону **+7(918)465-66-44**.

ОГЛАВЛЕНИЕ

ОГЛАВЛЕНИЕ	2
ХАРАКТЕРИСТИКИ	3
Обзор	3
Основная информация	6
Размеры	6
Скорость, вместимость и масса	6
Размещение	7
Корпус и палуба	7
Информация о двигателе	7
ФОТОГРАФИИ	8
КОНТАКТЫ	14
Контактная информация	14
Телефоны	14
Время работы	14
Адрес	14

ХАРАКТЕРИСТИКИ

Обзор

Boat Name Endless Summer **Dimensions** LOA: 42 ft 0 in Beam: 14 ft 11 in Minimum Draft: 3 ft 10 in Displacement: 27500 lbs **Engines** Engine 1: Engine Brand: Cummins Engine Type: Inboard Engine/Fuel Type: Diesel Location: Starboard Engine Hours: 2500 Drive Type: Direct Drive Engine Power: 210 HP Engine 2: Engine Brand: Cummins Engine Type: Inboard Engine/Fuel Type: Diesel Location: Port Engine Hours: 2500 Drive Type: Direct Drive Engine Power: 210 HP **Tanks** Fresh Water Tanks: (320 Gallons) Fuel Tanks: (500 Gallons) Holding Tanks: (40 Gallons) **Accommodations** Number of double berths: 2 Number of cabins: 2 Number of heads: 2 **Outside Equipment/Extras** Electric windlass

Accommodations

"Endless Summer" has two large staterooms with the master aft featuring a true Queen size bed. The master stateroom has its own private head with stall shower and there is an abundance of drawer and locker storage. The guest stateroom is forward so there is plenty of privacy for guests. This stateroom has a doublewide berth to port. Across from the berth is a large amount of additional storage drawers. The guest head is also forward and to port.

The galley is down and has enough room to make cooking aboard on a regular basis a pleasure. Opposite of the galley is a large dinette for dining and can be used as a third sleeping area if need be. The salon is quite large and bright and has a door to the side deck as well as the aft deck. The side deck door is convenient to the lower helm and has a screen to allow for a nice breeze when not running the air conditioner.

Rich teak woodwork is seen throughout the interior and is in excellent condition. Three Marine Air AC/Heat keep the cabin nice and comfortable. There is a generator in a hush box as well as an Inverter.

On the exterior, "Endless Summer" has plenty of room for entertaining and cruising comfortably. The flybridge has large built in seating as well as helm chair. Access to the hardtop over the aft deck from the bridge allows for launching of the tender utilizing the electric davit. The aft deck is like having a waterfront back porch and is a great place to relax no matter the time of year. With the full enclosure this area is useable space year round! A wet bar rounds out the creature comforts! Large side decks make line handling and anchoring a breeze.

- Three Marine Air Systems AC/Heat
- Princess 3 Burner Electric Stove
- Panasonic Microwave
- Double Stainless Steel Sink
- Avanti Refrigerator (110 only)

- Pressurized Hot and Cold Water System
- 11 Gallon Hot Water Heater
- Galley Down with Dinette
- Full beam aft stateroom with Queen-sized bed
- Lectrsan head and separate stall shower In Master
- Salon Blinds
- Sofa bed
- Swivel Rocker
- Windshield Privacy and Textaline Canvas
- Lower helm
- Forward stateroom w/ Double berth to port and private head
- Roomy Enclosed sundeck with like new enclosure
- Access from the aft deck to the swim platform and swim ladder
- Fully enclosed Flybridge with like new canvas and enclosure

Galley

The extremely clean galley is down to Starboard and features everything needed to make the chef happy. Lots of storage and plenty of counter space make preparing an elegant meal or just a quick snack easy.

Princess 3 burner electric stove/oven

Panasonic Microwave

Toaster Oven

Avanti Refrigerator (110 only)

Large Double sink

Plenty of storage

Lots of counter space

Comfortable dinette to port

Electronics

Everything needed to push off today. Bahamas anyone?

Raymarine Radar

Robertson AP 2000 Autopilot with remote

Ramarine 120C GPS Chartplotter

Garmin GPS Map 120C

Visio TV

Electrical Systems

- Onan 8kw Genset (1130 hours)
- Inverter
- Dual 30amp Shore power Service
- Additional power plug ins added to starboard side deck at helm door
- Shore power Cords
- Battery Selector Switch
- Galvanic Isolators

Deck and ground tackle

The canvas and enclosure on Endless Summer are "like new". Enjoy complete comfort while underway or at rest.

Dinghy Davit on Hard top

Dinghy Cradle on Hard top

Please note NO DINGHY or MOTOR

Electric windless

Anchor w/ Chain and rode

Additional Electrical plug in on starboard side deck

Wide side decks for easy line handling

Fenders and dock lines

Upper helm Captains chair

Plenty of seating for guests

Brokers Comments

- This great Tradewinds has it all. She has been loved for years and it shows. Great loop?

Bahamas? Live a board? Endless Summer is ready to make your dreams come true.

- Equipped with Twin 210 HP Cummins Diesels 2500 hours
 - 2 Staterooms w/ Private Heads and Showers
 - 8 kw Onan Generator 1130 hours
 - Full Electronics
 - Full Bridge and Aft Deck Canvas and enclosure "like new".
 - Detailed logs both on paper and on disc.
 - Don't Wait! Call today
-
- Equipped with Twin 210 HP Cummins Diesels 2500 hours
 - 2 Staterooms w/ Private Heads and Showers
 - 8 kw Onan Generator 1130 hours
 - Full Electronics
 - Full Bridge and Aft Deck Canvas and enclosure "like new".
 - Detailed logs both on paper and on disc.
 - Don't Wait! Call today!

Основная информация

Тип судна: Крейсер

Модельный год: 1989

Год постройки: 1989

Страна: United States

Размеры

Длина общая: 42' 0" (12.80m)

Ширина: 14' 11" (4.55m)

Мин. осадка: 3' 10" (1.17m)

Скорость, вместимость и масса

Водоизмещение: 27500 Pounds

Вместимость воды: 320 Gallons

Вместимость сточного бака: 40 Gallons

Объем топливного бака: 500 Gallons

Размещение

Всего кают: 2

Всего коек: 2

Всего ком. состава: 2

Корпус и палуба

Материал корпуса: Fiberglass

Информация о двигателе

Производитель: Cummins

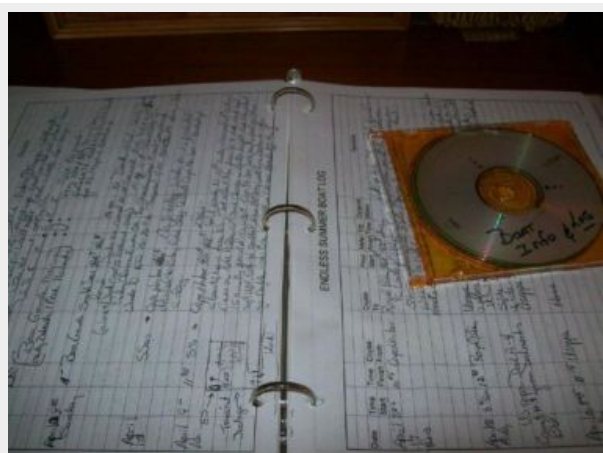
Тип двигателя: Inboard

Тип топлива: Diesel

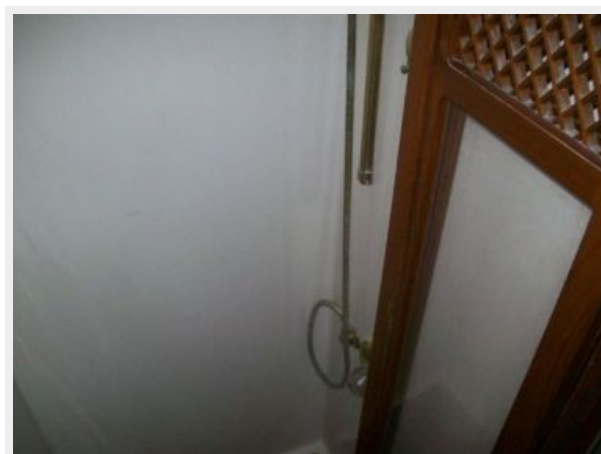
ФОТОГРАФИИ

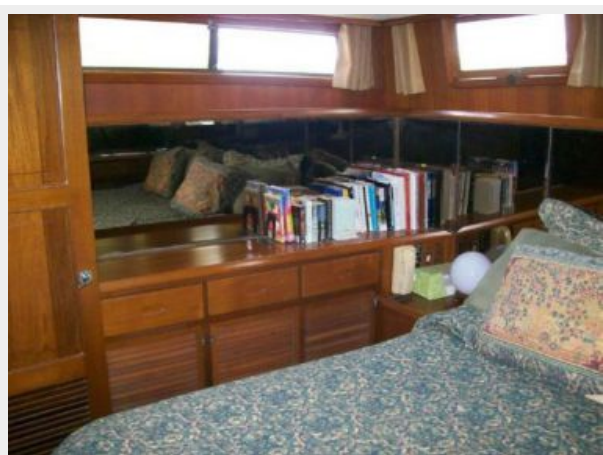












КОНТАКТЫ

Андрей Шестаков (Andrey Shestakov) – ведущий яхтенный брокер отдела продаж яхт и судов компании Shestakov Yacht Sales Inc. Официальный представитель Shestakov Yacht Sales Inc. для русскоговорящих клиентов в центральном офисе компании в Майами/Форт Лодердейл/Флорида/США.

Контактная информация

Email: andrey@shestakovyachtsales.com

Web: shestakovyachtsales.com

Телефоны

Краснодарский край: **+7(918)465-66-44**

США, Майами, Флорида: **+1(954)274-4435**

Время работы

Понедельник – Суббота: **9:00 - 21:00**
EDT

Воскресенье: **Закрето**

Адрес



Harbour Towne Marina, 850 NE 3rd St,
STE 213, Dania, FL 33004