

BOSS — AZIMUT



Builder: AZIMUT

Year Built: 2001

Model: Motor Yacht

Price: PRICE ON APPLICATION

Location: Italy

LOA: 56' 8" (17.25m)

Beam: 15' 11" (4.85m)

Min Draft: 4' 1" (1.24m)

Cruise Speed: 26 Kts. (30 MPH)

Max Speed: 32 Kts. (37 MPH)

Our experienced yacht broker, Andrey Shestakov, will help you choose and buy a yacht that best suits your needs **BOSS — AZIMUT** from our catalogue. Presently, at Shestakov Yacht Sales Inc., we have a wide variety of yachts available on our sale's list. We also work in close contact with all the big yacht manufacturers from all over the world.

If you would like to buy a yacht **BOSS — AZIMUT** or would like help answering any questions concerning purchasing, selling or chartering a yacht, please call **+1(954)274-4435**

TABLE OF CONTENTS

TABLE OF CONTENTS	2
SPECIFICATIONS	3
Overview	3
Basic Information	3
Dimensions	3
Speed, Capacities and Weight	3
Accommodations	3
Hull and Deck Information	4
Engine Information	4
DETAILED INFORMATION	5
Deck Equipment	5
Exclusions	5
Disclaimer	5
PHOTOS	6
CONTACTS	15
Contact details	15
Telephones	15
Office hours	15
Address	15

SPECIFICATIONS

Overview

VAT PAID - EXCELLENT CONDITION - GREAT OPPORTUNITY – MOTIVATED SELLER

Basic Information

Category: Motor Yacht

Sub Category: Flybridge

Model Year: 2001

Year Built: 2001

Refit Year: 2012

Country: Italy

Dimensions

LOA: 56' 8" (17.25m)

Beam: 15' 11" (4.85m)

Min Draft: 4' 1" (1.24m)

Speed, Capacities and Weight

Cruise Speed: 26 Kts. (30 MPH)

Max Speed: 32 Kts. (37 MPH)

Water Capacity: 237.7548468 Gallons

Fuel Capacity: 686.8473352 Gallons

Accommodations

Total Cabins: 3

Sleeps: 6

Total Heads: 3

Crew Cabin: 1

Crew Berths: 1

Crew Sleeps: 1

Crew Heads: 1

Hull and Deck Information

Hull Material: Fiberglass

Hull Configuration: Modified V-Hull

Engine Information

Engines: 2

Manufacturer: MTU

Model: 8V

Engine Type: Inboard

Fuel Type: Diesel

DETAILED INFORMATION

Deck Equipment

• Depthsounder • Radar • Log-Speedometer • Repeater(s) Fly • TV Set - Satellite+decoder • Plotter • DVD Player • Autopilot • Radio • CD Player • GPS • Cockpit Speakers • VHF • Bow Thruster • Electric Bilge Pump • Oven • Manual Bilge Pump • Microwave Oven • Air Conditioning 60000 BTU • Electric Head • Heating • Hot Water • Refrigerator - + Ice Maker • Deep Freezer • Sea Water Pump • Battery Charger • Shore Power Inlet • Generator 8 Kw Kholer • Inverter • Teak Cockpit • Cockpit Shower • Teak Sidedecks • Hydraulic Gangway • Liferaft • Cockpit Cushions • Cockpit Table • Cockpit Cover

Exclusions

Owner's personal belongings.

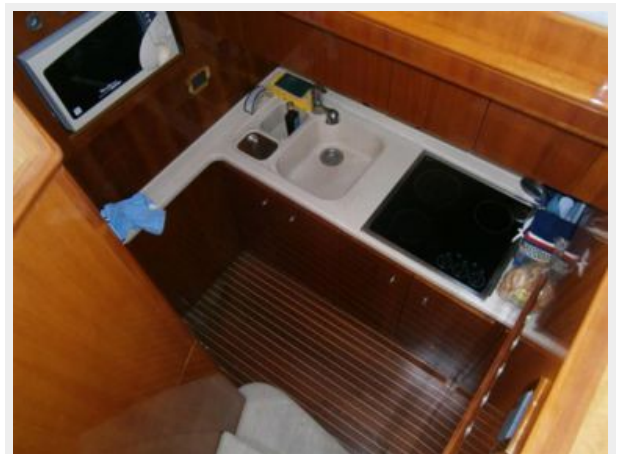
Disclaimer

The Company offers the details of this vessel or yacht in good faith but cannot guarantee or warrant the accuracy of this information nor warrant the condition of the vessel. A buyer should instruct his representatives, agents, or his surveyors, to investigate such details as the buyer desires validated. This vessel or yacht is offered subject to prior sale, price change, or withdrawal without notice.

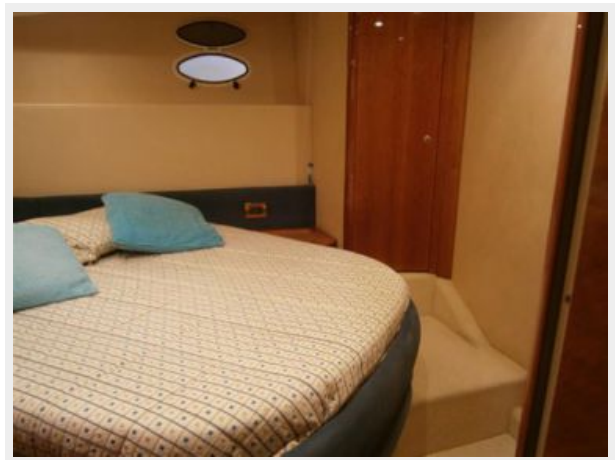
PHOTOS



















CONTACTS

Andrey Shestakov, leading yacht broker of the sales department of Shestakov Yacht Sales Inc. Shestakov Yacht Sales Inc., the official representative of the Miami/Fort Lauderdale FL headquarters.

Contact details

Email: andrey@shestakovyachtsales.com

Web: shestakovyachtsales.com/en/

Telephones

USA: +1(954)274-4435

Office hours

Monday – Saturday: **9:00 - 21:00** EDT

Sunday: **closed**

Address



Harbour Towne Marina, 850 NE 3rd St,
STE 213, Dania, FL 33004