

SAILACIOUS — TAYANA



Судостроитель: TAYANA

Год постройки: 1977

Модель: Крейсерская яхта

Цена: **ЦЕНА ЯХТЫ ПО ЗАПРОСУ**

Местонахождение: United States

Длина общая: 37' 0" (11.28m)

Ширина: 11' 6" (3.51m)

Мин. осадка: 5' 10" (1.78m)

Купить **Sailacious — TAYANA** а также выбрать подходящую вам яхту из нашего каталога яхт вам поможет опытный яхтенный брокер Андрей Шестаков. На сегодняшний день компания **Shestakov Yacht Sales Inc.** имеет большое количество яхт в собственном списке продаж, а также тесно сотрудничает со всеми крупными яхтенными производителями по всему миру.

Для того чтобы купить яхту **Sailacious — TAYANA** а также проконсультироваться по любому вопросу связанному с покупкой, продажей, чартером яхт позвоните по телефону **+7(918)465-66-44**.

ОГЛАВЛЕНИЕ

ОГЛАВЛЕНИЕ	2
ХАРАКТЕРИСТИКИ	3
Обзор	3
Основная информация	6
Размеры	6
Скорость, вместимость и масса	6
Размещение	6
Корпус и палуба	6
Информация о двигателе	7
ФОТОГРАФИИ	8
КОНТАКТЫ	12
Контактная информация	12
Телефоны	12
Время работы	12
Адрес	12

ХАРАКТЕРИСТИКИ

Обзор

Now in Florida!

Great fully equipped cruising boat!

No teak deck!

Bob Perry's Tayana 37 is one of the most popular cruising boats ever built. They've been built almost 700 of them over the course of 30 years of making the same model because they're so beloved. Their beauty, comfort and quality construction have stood the test of time. It's ready to cruise because the owners are cruising now. Don't wait. Someone will snap this one up in a hurry.

Boat Name Sailacious Specs Builder: Ta Yang Yachts Designer: Bob Perry Flag of Registry: United States Keel: Full Dimensions LOA: 42 ft 0 in Beam: 11 ft 6 in LWL: 30 ft 0 in Length on Deck: 37 ft 0 in Minimum Draft: 5 ft 10 in Displacement: 23400 lbs Ballast: 8000 lbs Bridge Clearance: 55 ft 0 in Engines Engine 1: Engine Brand: Perkins Year Built: 1978 Engine Model: 4-108 Engine Type: Inboard Engine/Fuel Type: Diesel Engine Hours: 5080 Drive Type: Direct Drive Engine Power: 50 HP Tanks Fresh Water Tanks: 1 Stainless steel (100 Gallons) Fuel Tanks: 1 (100 Gallons) Holding Tanks: 1 Fiberglass (40 Gallons) Accommodations Number of single berths: 1 Number of double berths: 2 Number of heads: 1 Electronics Radio VHF Compass Wind speed and direction Depthsounder Autopilot DVD player Radar Plotter Navigation center Sails Storm jib Furling genoa Genoa Battened mainsail Rigging Steering wheel Inside Equipment Battery charger Electric bilge pump Refrigerator Marine head Deep freezer Sea water pump Manual bilge pump Air conditioning Hot water Fresh water maker Electrical Equipment Inverter Shore power inlet Electrical Circuit: 110V Outside Equipment/Extras Davits Liferaft Cockpit shower Cockpit table Teak cockpit Solar panel Total Liferaft Capacity: 4 Manual windlass Covers Lazyjacks Mainsail cover Genoa cover Cockpit cover Bimini Top

Accommodations

A few steps down from the cockpit leads to the saloon. To port is a U shaped galley. Just forward of the galley is a U shaped settee that converts to a double berth when needed. forward of the port settee is a shelf against the forward bulkhead and a Sodastream beverage maker is built in. Opposite, on the starboard side is a full length straight settee. The starboard settee pulls out to sleep two. Just aft of the starboard settee is a forward facing nav station. Aft of the nav station is a quarter berth which many cruisers use for storage. Nestled in the U shaped settee is a table. The sharp corners of the settees are ideal for sitting leaning back with your feet up to read or lounge. Just forward of the port settee is the head with access to the saloon and private access from the owner's cabin forward. In the passage to the owner's cabin on the starboard side beautiful handmade

teak joinery provides ample storage. The owner's private cabin forward features a large vee berth and a large opening hatch for light and ventilation. Several opening bronze and glass ports and a classic teak butterfly hatch offer ample light and ventilation. Fans aid the ventilation and reverse cycle air conditioning make the interior comfortable in any weather while on shorepower.

- Sleeping accommodations for seven
- 16,000 btu reverse cycle Marine Air Systems VCD 16K air conditioning with digital control
- Classic teak butterfly hatch in saloon for light and ventilation
- Many bronze and safety glass opening ports for light and ventilation
- 12 volt fans for ventilation
- Dining table serves five
- Tremendous storage throughout
- Beautiful custom teak joinery

Galley

- 3 burner Smev stainless steel propane cooktop
- Adler Barbour C200 4 cubic foot refrigerator with top opening
- Super efficient Engel chest freezer
- Deep stainless steel sink with hot & cold pressure water
- Filtered drinking water tap at galley sink
- Lots of galley storage
- Salt water pump at galley sink
- Sodastream beverage system with 20# external CO2 tank

Electrical

- 4 Trojan T105 plus 6 volt house batteries - 3 years old - house bank capacity 450 amp hours
- 12 volt engine start battery - 2 years old
- 2 205 watt solar panels
- MPPT solar controller
- Xantrex 1800 I 110 volt inverter
- 20 amp battery charger
- 2 50' shorepower cords

Sails & Rigging

- 130% genoa on Harken roller furler - only 8 years old!
- Mainsail with stack pack
- Heavy duty storm staysail on Profurl roller furler - only 6 years old!
- All running rigging led aft to cockpit

Deck & Hull

- **No teak deck - never had it!**
- **100 gal. black iron fuel tank**
- **100 gal. stainless steel water tank**

- **Bimini & dodger**

- **Dinghy davits**

- **Manual windlass**

- **CQR 45# primary anchor with 150' chain and 100' rope rode**
- **CQR 35# secondary anchor with 30' chain and 200' rope rode**
- **Life Sling**
- **Jerry jug corral with 5 6 gal. jugs and sun cover**
- **Custom wind chutes over hatches**
- **Shadetree cover**
- **Magma Newport barbecue grill with 6# external propane tank**
- **Avon 4 person liferaft - out of date**

Electronics

- **Raymarine C80 color chartplotter with radar overlay**
- **Raymarine 15 mile radome**
- **Raymarine ST60 autopilot control head**
- **Raymarine S30 course computer**
- **Raymarine Type 2 autopilot linear drive**
- **Raymarine ST60 wind instrument**
- **Raymarine ST60 depth sounder**
- **Standard Horizon DSC VHF radio at nav station**
- **Standard Horizon RAM mic with full VHF control mounted at helm**
- **ICOM IC-710 SSB radio**
- **ICOM AT 130 automatic tuner**
- **Jensen iPod compatible stereo**

Engine and Mechanical

- **Perkins 4-108 50 hp diesel engine, 5080 hours**
- **2 automatic bilge pumps**
- **Manual bilge pump**
- **100 gal. stainless steel water tank**
- **12 gal/hr Aquanu MD01 watermaker - cracked membrane end plug**
- **40 gal. fiberglass holding tank with macerator pump**
- **20 gal. fiberglass graywater tank**

- 6 gal. water heater
- Saltwater washdown pump

Основная информация

Тип судна: Крейсерская яхта

Модельный год: 1977

Год постройки: 1977

Страна: United States

Размеры

Длина общая: 37' 0" (11.28m)

Длина по ватерлинии: 30' 0" (9.14m)

Ширина: 11' 6" (3.51m)

Мин. осадка: 5' 10" (1.78m)

Скорость, вместимость и масса

Водоизмещение: 23400 Pounds

Вместимость воды: 100 Gallons

Вместимость сточного бака: 40 Gallons

Объем топливного бака: 100 Gallons

Размещение

Всего кают: 1

Всего коек: 2

Всего ком. состава: 1

Корпус и палуба

Материал корпуса: Fiberglass

Отделка корпуса: Stainless Steel

Информация о двигателе

Двигатели: 1

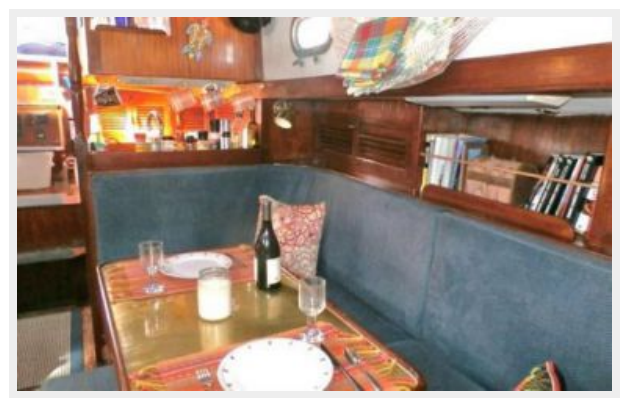
Производитель: Perkins

Модель: 4-108

Тип двигателя: Inboard

Тип топлива: Diesel

ФОТОГРАФИИ









КОНТАКТЫ

Андрей Шестаков (Andrey Shestakov) – ведущий яхтенный брокер отдела продаж яхт и судов компании Shestakov Yacht Sales Inc. Официальный представитель Shestakov Yacht Sales Inc. для русскоговорящих клиентов в центральном офисе компании в Майами/Форт Лодердейл/Флорида/США.

Контактная информация

Email: andrey@shestakovyachtsales.com

Web: shestakovyachtsales.com

Телефоны

Краснодарский край: **+7(918)465-66-44**

США, Майами, Флорида: **+1(954)274-4435**

Время работы

Понедельник – Суббота: **9:00 - 21:00**
EDT

Воскресенье: **Закрето**

Адрес



Harbour Towne Marina, 850 NE 3rd St,
STE 213, Dania, FL 33004