

CONTROLLED CHAOS — VIKING



Судостроитель: [VIKING](#)

Длина общая: 66' 0" (20.12m)

Год постройки: 2014

Модель: Катер для спортивной рыбалки

Цена: ЦЕНА ЯХТЫ ПО ЗАПРОСУ

Местонахождение: United States

Купить **Controlled Chaos — VIKING** а также выбрать подходящую вам яхту из нашего каталога яхт вам поможет опытный яхтенный брокер Андрей Шестаков. На сегодняшний день компания **Shestakov Yacht Sales Inc.** имеет большое количество яхт в собственном списке продаж, а также тесно сотрудничает со всеми крупными яхтенными производителями по всему миру.

Для того чтобы купить яхту **Controlled Chaos — VIKING** а также проконсультироваться по любому вопросу связанному с покупкой, продажей, чартером яхт позвоните по телефону **+7(918)465-66-44**.

ОГЛАВЛЕНИЕ

ОГЛАВЛЕНИЕ	2
ХАРАКТЕРИСТИКИ	6
Обзор	6
Основная информация	6
Размеры	6
Размещение	6
Корпус и палуба	6
Информация о двигателе	7
ПОДРОБНОЕ ОПИСАНИЕ	8
Remarks	8
Additional Specs	8
Décor	8
Salon	9
Salon Day Head	9
Dinette	9
Galley	9
Companionway	10
Master Stateroom	10
Master Head	10
Forward Stateroom	11
Forward Head	11
Starboard Stateroom	11
Starboard Head	11
Crew Stateroom	12
Crew Head	12
Helm/Electronics	12
Flybridge	15
Deck/Hull	16

Cockpit	17
Mechanical Equipment/Engine Room	18
Exclusions	18
Исключения	18
Отказ от ответственности	18
ФОТОГРАФИИ	20
Salon	20
Light Art	20
Salon Seating	20
Dinette	20
Day Head	20
Breaker Panel	20
Galley	21
Galley Oven	21
Galley	21
Galley	21
Sub Zeros	21
Light Art	21
Master Stateroom	22
Master Stateroom	22
Master Stateroom	22
Master Stateroom	22
Master Stateroom	22
Master Stateroom	22
Master Stateroom	22
Master TV	23
Master Head	23
Master Head	23
Forward Stateroom	23
Forward Stateroom	23

Forward Stateroom Storage	23
Forward Head	24
Forward Head	24
Starboard Stateroom	24
Starboard Stateroom	24
Starboard Stateroom TV	24
Starboard Head	24
Starboard Head	25
Crew Stateroom	25
Laundry Room	25
Crew Head	25
Tower	26
Helm	26
Helm	26
Helm Seating	26
Flybridge Seating	26
Companion Seating	26
Cockpit	27
Cockpit	27
Cockpit	27
Mezzanine Seating	27
Transom Profile	27
Engine Room	27
Port Generator	28
AC Units	28
Satellite Systems	28
Starboard Generator	28
Valve Covers	28
Watermaker	28

Port Bow	29
Starboard Bow	29
Transom	29
Transom	29
КОНТАКТЫ	30
Контактная информация	30
Телефоны	30
Время работы	30
Адрес	30

ХАРАКТЕРИСТИКИ

Обзор

Galati Yacht Sales has been committed to exceeding the expectations of its customers for more than 42 years, and we understand that purchasing a boat is a big decision. Our professional staff is here to assist you in every way – before, during and after the sale. Please feel free to contact us with any questions that you may have.

Основная информация

Тип судна: Катер для спортивной рыбалки

Подкатегория: Convertible

Модельный год: 2014

Год постройки: 2014

Страна: United States

Открытая палуба мостика: Да

Кубрик: Да

Размеры

Длина общая: 66' 0" (20.12m)

Размещение

Всего кают: 4

Всего ком. состава: 4

Корпус и палуба

Материал корпуса: Fiberglass

Информация о двигателе

Двигатели: 2

Производитель: Detroit Diesel

Модель: 16V2000MGI

Тип двигателя: Inboard

Тип топлива: Diesel

ПОДРОБНОЕ ОПИСАНИЕ

Remarks

BALANCE OF MTU ESC. 36 MONTHS OR 2,000 TOTAL ENGINE HOURS - EXPIRES 3/18/17

4/6/15 - PURCHASED PASSPORT ACCESSORY PACK- CRUISERS CLASS AND BOTH GENERATORS - \$20K UPGRADE - EXPIRES 04/06/19

Controlled Chaos is arguably one of the finest 66 Convertibles to leave the Viking factory. The vessel was extremely well orchestrated during build and rigging. She is captain maintained to perfection and is sure to please. With custom fuel tank management during construction, this 66 holds the most fuel of the 66 fleet with a Seakeeper Gyro. The interior of Controlled Chaos turned out amazing, it was extremely well appointed with custom accents above and beyond the Prestige Edition Décor. One example of this is the dual custom channel glass etched lit back glass artwork in the galley and above the dinette.

If you are seriously looking into a new or like new 66 Viking Convertible, Controlled Chaos needs to be strongly considered in your decision.

Additional Specs

- Forward Stateroom Layout (Crossover VIP)
- Layout: Four Stateroom Layout, 4 & ½ heads
- General: Overboard Discharge for All Heads

Décor

- Brushed Nickel Hardware Throughout
- Brushed Nickel Coverplates for Switches & Receptacles Throughout
- Satin Nickel Interior Light Trim Throughout
- LED Interior Lights Throughout
- Wrapped Hatch Carpet Installation
- “Prestige” Edition Décor
- Salon Door Type Catches on Stateroom Doors Hook & Eye
- Sofa Upgraded Style with Dewberry Lift
- Decorator Supplied Bar Stools
- Custom Wallpaper
- Custom Headliner Material throughout Boat
- Interior Wood – Random Teak Throughout
- Raised Panel Stateroom and Head Doors
- Teak Frames for TV’s – where applicable

- Teak Frames for all Shower Doors – where applicable

Salon

- Upgraded Bose Entertainment
- Cocktail Table
- Salon Door with Electric Door Opener
- Dimmers for Quartz Lights
- Teak Wire Box
- Dinette Dimmers on Overhead Low Voltage AC Lights
- Teak Trim Amtico Floor Meets Carpet
- Custom Amtico Flooring at Salon Entranceway
- Teak Valances
- 40" Flat Screen Television
- Teak Strips in Headliner
- Carpet Runner, Full, Canvas Companionway, Costa, Canvas Carpet Runner with Steps
- Crown Moulding
- Mappa Burl - Cocktail Table and Dinette Tables
- Wine Chiller in Forward Pantry
- Amtico Galley Flooring across & under Dinette
- 110 V Outlet in Lift Up Sofa Arm

Salon Day Head

- Custom Amtico Flooring
- Towel Bars & Rings – Brushed Nickel
- Faucet – Satin Nickel
- Custom Wallpaper

Dinette

- Teak Dinette Table with Teak Pedestal
- Crown Moulding

Galley

- Trash Compactor
- 110V Outlet next to Switch On Bottom of Upper Cabinet Above Sink
- Chrome Faucet
- Stainless Steel Under-mount

- Custom Amtico Flooring
- Crown Moulding
- Kitchen Aid Oven
- Custom Channel Glass Backsplash
- Backless Barstools Oversized for Comfort

Companionway

- Vertical Teak Strips between Wall Panels
- Central Vac
- Linen Closet
- Washer/Dryer
- Curved Access to Crew Quarters

Master Stateroom

- Additional Telephone Outlet
- Upgraded Mattress – Slumber #8
- Teak End Table Tops
- 32” Flat Panel Television
- CD Stereo and DVD Player
- Teak Columns above Night Tables
- Appliqued Bedspread & Shams
- Full Length Mirror on Inside of Stateroom Door
- Columns at Night Stands – Ultra Leather Black Onyx
- Safe below Master Berth
- His & Her Walk in Closet
- Large Bank of Drawers to Port

Master Head

- Teak Face on Lower Vanity
- Mirror around Upper Vanity Insert
- Custom Amtico Flooring
- Chrome Shower Door Hardware for Frameless Shower Door
- Shower Fixtures – Satin Nickel
- Towel Bars & Rings – Brushed Nickel
- Faucet – Satin Nickel
- Custom Wallpaper
- Head Hunter Head System
- Blower System

- Single Piece Glass Shower Door

Forward Stateroom

- 19" Flat Screen Television
- Upgraded Mattress – Slumber #6
- DVD Player
- VIP Forward Berth Arrangement with Double Berth to Port and Starboard Upper
- Storage Below Berths
- Upper Cabinet Storage
- Private Access to Head & Shower

Forward Head

- Teak Face on Lower Vanity
- Mirror Wallpaper Around Upper Vanity Insert
- Custom Amtico Flooring
- Shower Fixtures – Satin Nickel
- Towel Bars & Rings – Brushed Nickel
- Faucet – Satin Nickel
- Custom Wallpaper
- Head Hunter Head System
- Brushed Aluminum Shower Door
- Vanity Top – Silestone Ocean Series with ½ Bullnose

Starboard Stateroom

- Upgraded Mattress System #1 (Upgrade for both Bunks)
- Teak Locker Top
- Custom Wallpaper
- 19" Flat Screen Television
- DVD Player

Starboard Head

- Teak Face on Lower Vanity
- Custom Amtico Flooring
- Shower Fixtures – Satin Nickel
- Tower Bars & Rings – Brushed Nickel
- Faucet – Satin Nickel

- Custom Wallpaper
- Head Hunter Head System
- Vanity Top – Silestone Ocean Series with ½ Bullnose
- Chrome Shower Door

Crew Stateroom

- Upgraded Mattress System #1 (Upgrade for both Bunks)
- Dimmer on Overhead Low-Voltage AC Lights
- Teak - Locker Top
- 19" Flat Screen Television
- DVD/CD Stereo
- Lift Up Upper Bunk Storage with 4" Box Top for Rods, etc.
- Access to Engine Room

Crew Head

- Teak Face on Lower Vanity
- Mirror Wallpaper around Upper Vanity Insert
- Custom Amtico Flooring
- Shower Fixtures – Satin Nickel
- Towel Bar & Rings – Brushed Nickel
- Faucet – Satin Nickel
- Access to Engine Room
- Head Hunter Head System
- Vanity Top - Ocean Series with ½ Bullnose
- Chrome Shower Door

Helm/Electronics

RADAR

- Furuno Navnet 3D MFDBB Processor
- Furuno Navnet 3D DRS25A 25KW 96NM Radar Less Array
- Furuno XN13A/6 – 6' Radar Array
- Furuno GP330B GPS Antenna
- Shakespeare 4365 GPS Antenna Mount
- KEP 17" LED Glass Bridge Marine Monitor
- (3) Atlona AT-DV115SRS DVI Extender
- (2) Dual Link 16' M-M Video Dist DVI-D Cable
- Atlona AT14050 HDMI M to DVI F Adapter

- Extron 4 Port DVI Distribution Amp

PLOTTER

- Garmin GPSMAP8208 – 8” TS MFD (Preloaded with Coastals Charts Mount In Drop Down Box)
- Garmin Remote Input Device – Grid
- KEP 17” LED Glass Bridge Marine Monitor
- (2) Atlona AT-DVII5SRS DVI Extender
- Extron 4 Port DVI Distribution Amp (View Navigation on both Salon TVs)
- (3) Dual Link 16’ M-M Video Dist DVI-D Cable
- Garmin GMS10 Network Expander
- (3) Garmin 40’ Network Cable
- Garmin GXM51 Antenna XM Weather Receiver

NAVNET PERIPHERALS

- Furuno Navnet 3D HUB101
- (4) Furuno 5M RJ45 LAN Cable
- Furuno FA50 12/24VDC AIS Black Box
- Digital Yacht SPL2000 VHF-AIS Splitter

NETWORK

- (4) Maretron FA-CF-ST Female NMEA Connector
- (4) Maretron FA-CM-ST Male NMEA Connector
- (25) Maretron DGI N2K Mid Bulk K Cable Gray
- (7) Maretron CM Micro Tee Male/Female/Female
- Micro/Mid Powertap Tee W/5M Drop
- (2) N2K Mid Double-Ended Cordset 1M Gray
- (3) N2L Mid Double-Ended Cordset 2M Gray
- (3) N2K Mid Double-Ended Cordset 3M Gray
- Maretron CM-CF-4 NMEA Multiport Box
- Micro Bulkhead Feed Thru MHF-CM
- Puls DC/DC 96W 18-32VDC in VDC Converter Network Power Supply

SOUNDER

- Furuno DFF3 Navnet3D 1-3KW Video Sounder
- Furuno CA200B-8B 2KW 200KHZ Transducer
- Furuno CA50BL-12HR 2KW 50KHZ Transducer
- Kep 17” LED Glass Bridge Marine Monitor
- Aten VS94A 4 Port VGA Splitter
- (4) Extron 6’ M-M VGA Cable

SOUNDER 2

- Garmin GSD-26 Sounder
- Airmar B265LM Chirp Capable Transducer

DIGITAL DEPTH/TEMP

- Furuno RD33 Data Organizer & Display – Viking Standard Equipment
- Furuno 235DHTLMSE HI-PRECTMP2 Transducer – Viking Standard Equipment

AUTOPILOT

- Garmin GHP20 Viper AutopilotW/GHC20
- Garmin Autopilot Installation Kit

VHF

- ICOM IC-M604 Black VHF Radio – Viking Standard Equipment
- ICOM IC-M604 Black VHF Radio
- (2) ICOM MB75 VHF Flush Mount F/502,602,802
- (2) Shakespeare Phaselll 6018 18' VHF Antenna – Required Subscription
- Shakespeare-SRA-40 Sirius Antenna
- Shakespeare 4365 GPS Antenna Mount
- SAT Phone
- Wave MBT400 WiFi Router
- Rogue Pro WiFi Converter for Bridge

CAMERA

- Gost PM-Mini IR Ball Camera (ER Center Forward looking Aft)
- 3V Dual Comp VID Amp 2 in 3 Out Amp MDA

THERMAL IMAGING

- FLIR M-324XP Single Payload Thermal Imager
- AME FLIR M-Series Hardtop Mount
- FLIR Power over Ethernet Injector (Provide FLIR Control from Salon Remote)
- Plotter Ethernet Switch Adam-6520 –Adam 6520
- Video Dist Amp MDA 5V Composite Video (1x5 with Input Loop thru, Extron View FLIR on Helm & Salon TV)

SPOTLIGHT

- ACR RCL100 24V Spotlight

SAT TV

- KVH TracVision HD7 SAT TV W/TriAmericas LNB
- (2) Direct TV HR24 HD/DVR DSS Receiver (Salon & Master Stateroom)
- (3) KVH Direct TV H25 HD DSS Receiver (KVH 19-0730 Forward, Starboard, Crew,

Staterooms)

- (2) Direct TV Latin America Receiver (Salon TVs, 1- Remaining TVs)
- ChannelPlus 5525 2 Channel Modulator (Modulate Latin America Receiver)
- (3) KVH HDTV RF Remote Control Kit
- (2) APC 750VA UPS Backup
- Multi-switch 3x4 Eagle Aspen S-2140-CE+ W/Power Supply
- Calrad 40-936B 1x4 Distribution Amp

SALON

- URC MX-980i Remote Control
- URC MX-5000i Remote Control
- URC MSC400i RF System Controller
- URC MSC400 Sensor Emitter Kit
- URC RFX250i Additional Antenna for MSC400i
- 66170 URC SEN-CCLS Contact Sensor
- (2) USB to Serial Adapter
- Apple TV Digital Multimedia Receiver (Salon TV)
- Extender SNAPAV HDMI-CAT5/6 HDBASET B-500-EXT-230-RS
- Playstation 3 Gaming/Video Console (To be Customer Supplied will require Bluetooth Adapter for Remote Control)
- (4) Matrix Deep Sea Lights 110V – Mounted Out Transom

TOWER

- Garmin GPSMAP8208 – 8” TS MFD (Preloaded with Coastal Charts)
- Furuno RD33 Data Organizer & Display
- ICOM HM-162 B Black VHF Command Mic
- (2) ICOM OPC-154I VHF Command Mic Extension

MISC

- No Split LIDS on Radio Boxes
- 110VAC GFI Outlet in Lift-Up Sofa Arm in Salon

NET

- Garmin G2 Vision Chart US512L MidAtlantic
- C-Map US East & Bahamas Chart (NN3D, WM75, MM3-VNA-022)
- Navnet3D-MM3-908-SAT Chart
- C-Map Chart, Caribbean C America (NN3D, WM76, MM3-VNA-027)
- (4) Matrix Lights Deep Sea White 110V 712-039-001-0A-01 4-Out Transom

Flybridge

- Electronic Trolling Valves
- Electronic Single-Lever Controls for Helm Pod
- Refrigerated Bridge Drink Box
- Bridge Freezer Box
- Removable Flybridge Jumpseat Backrest
- Recessed Electronics Boxes
- Push Button Catches for Electronic Boxes
- Fresh Water Outlet on Bridge
- No Exposed Fasteners on Bridge
- VHF Radio ICOM-604
- Handrail on Side of Helm Console Above Helm Access Door
- Release Teak Helm Pod
- Cigarette Lighter Style Outlet
- Stainless Steel Gas Springs on Flybridge Bench Seats
- Drip Dry Foam Standard – Flybridge Cushions
- Horns Under Bridge
- 3-Position Switch for Overhead Lights in Hardtop
- Dedicated Forward Feed for Tower with Labeled Shutoff Valve in Forward Flybridge Locker
- Switch in Radiobox for Electronic Drop-Down Overhead Box in Hardtop
- Single-lever Control Handles with Bow Thruster Buttons
- MTU “Bridge Controls” System for 2000 Series Engines
- Rod Racks for Under both sides of Bench Seats
- Eliminate Storage Bin under Bench Seats for Larger Rod Storage
- Compass at Bottom of Recessed Electronics Box
- Bolstered Cushions
- Bow Thruster Control Panel with Buttons – Joy Stick
- Clam Shell Lifts for Electronics Box Lids Standard Push Button
- Extend Bench Seat Storage Aft Port & Starboard below Jump Seat Cabin
- Helm Chairs
- Hatch Cover on Stainless Steel Gas Piston

Deck/Hull

- Oval Exhaust Outlets (Linear Exhaust)
- Fiberglass Side Thru-Hulls
- Prop Pockets to Reduce Draft
- Fresh Water Washdown in Anchor Locker at Bow
- Anchor Bracket in Anchor Locker
- Recessed Trim Tab Covers
- Gas Springs for Anchor Locker Hatch
- Side Mounted Handrails that Follow Top of Salon Window
- Additional Fuel Tank Forward for a Total of 3 Tanks

- No Bowrail or Pulpit for Clean Look
- Bow Cleats Fore & Aft
- Salon Forward Window Mask
- Windlass Lewmar C4
- DC Bow Thruster
- Hull Color – Custom Seafoam Green
- VC Offshore Blue Bottom Paint
- Fiberglass Hull Vents in place of Metal
- Rub Rail – Painted Snow White
- Mount Running, Transom
- Extended Handrail in Underside of Brow Forward around Brow Curve
- Custom Non-Metallic Boot Stripe
- Recessed Trim Tab Covers
- Converted Water Tank to Fuel & Holding to Water to Maximize Fuel Capacity during Production
- SEAKEEPER GYRO Stabilizer
- Clamshell Scoops for Seawater Pump Intakes – Mechanical Custom

Cockpit

- Refrigerated Cockpit Step Box
- Mezzanine Cockpit
- Awlgriped Lazarette
- Y-Valve for Fresh and Saltwater Washdown
- Freezer Storage in Mezzanine Seat
- Storage Lockers Under Port and Starboard Coaming
- Refrigerated Port Mezzanine Under-mount Step Box
- Refrigerated Starboard Under-mount Step Box
- Live Well in Sole
- Cruisair “Cool Breeze” Mezzanine Air System
- Crushed Ice Machine with Discharge into Port Mezzanine Box
- Port & Starboard Fishboxes with Dividers in Deck-Wells
- (2) 24V Outlets Forward Under Coaming, One each side (20 amp max)
- Transom Combing with Gate & Transom Box
- Cockpit Freezer Bait Trays
- Tuna Tube Set Up for Transom Livewell
- Additional Seawater Supply for On Deck Livewell
- Rupp Revolver Rod Holders – (2) at 15 degree and (2) at 30 degree
- Plumb Dockside Water Inlet through Watermaker
- Costa, Cockpit Fly Cover
- Costa, Fly Sunshade with Stainless Steel Poles for Rod Holders
- Release Marine Custom Trillion Fighting Chair
- Green and White Rope Lighting under Covering Boards

- Green and White Lights in Cockpit Overhang
- Split Lids on Cockpit Fishbox
- Custom Teak Deck & Mezzanine

Mechanical Equipment/Engine Room

- Access Door to Crews Quarters
- Generator Gas-Water Separator for Starboard Generator
- Awlgrip Brass Thru-Hulls & Sea Strainers in Engine Room & Forward Bilges
- Fuel Filters - Snow White
- Oil Change System to Cockpit Dockside Box
- 110V Outlet on Aft Bulkhead at Entranceway
- Clear Acrylic Shaft Log Access Covers
- Dockside Water Manifold to Fill Water Tank from Cockpit
- Deck Fill for Fresh Water Tank
- Bilge – Awlgrip Forward Bilge and Anchor Locker, Magnetic Switches for All, and Bilge Lights
- Awlgriped Anchor Locker
- Additional 21.5 Kw Generator
- 1400 GPD Watermaker with Auto Backflush
- Access to Crews Quarters
- Engine Upgrade to MTU Series 2000 V16 M91 – 2030 HP with Extended Warranty
- Generator Gas-Water Separator for Optional Generator
- Seakeeper Gyro
- Headhunter Fresh Water Pump
- (2) Tool Boxes – Snow White
- Trim at Engine Room Entrance – Snow White
- Dual Power Steering Pumps Standard
- Back-up Fuel Transfer Pump in Parallel

Exclusions

Owner's personal property.

Исключения

При продаже яхты исключаются личные вещи владельца.

Отказ от ответственности

Компания предоставляет описание судна или яхты добросовестно, но не может

гарантировать точность этой информации, а также не ручается за техническое состояние. Покупатель должен проинструктировать своих агентов или оценщиков исследовать представленную информацию более подробно, по собственному желанию. Продажа судна или яхты, изменение цены или снятие с продажи будет происходить без предварительного уведомления.

ФОТОГРАФИИ

Salon



Light Art



Salon Seating



Dinette



Day Head



Breaker Panel



Galley



Galley Oven



Galley



Galley



Sub Zeros



Light Art



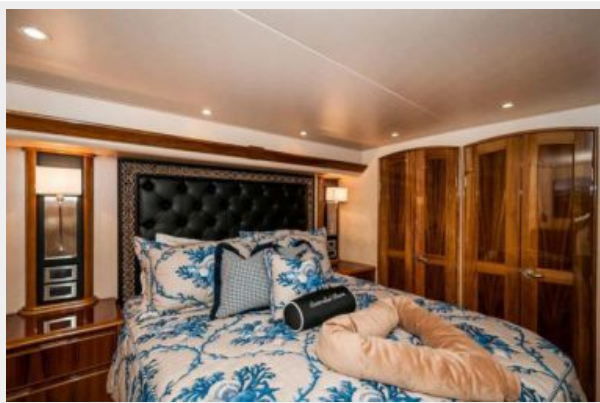
Master Stateroom



Master Stateroom



Master Stateroom



Master Stateroom



Master Stateroom



Master Stateroom



Master TV



Master Head



Master Head



Forward Stateroom



Forward Stateroom



Forward Stateroom Storage



Forward Head



Forward Head



Starboard Stateroom



Starboard Stateroom



Starboard Stateroom TV



Starboard Head



Starboard Head



Crew Stateroom



Laundry Room



Crew Head



Tower



Helm



Helm



Helm Seating



Flybridge Seating



Companion Seating



Cockpit



Cockpit



Cockpit



Mezzanine Seating



Transom Profile



Engine Room



Port Generator



AC Units



Satellite Systems



Starboard Generator



Valve Covers



Watermaker



Port Bow



Starboard Bow



Transom



Transom



КОНТАКТЫ

Андрей Шестаков (Andrey Shestakov) – ведущий яхтенный брокер отдела продаж яхт и судов компании Shestakov Yacht Sales Inc. Официальный представитель Shestakov Yacht Sales Inc. для русскоговорящих клиентов в центральном офисе компании в Майами/Форт Лодердейл/Флорида/США.

Контактная информация

Email: andrey@shestakovyachtsales.com

Web: shestakovyachtsales.com

Телефоны

Краснодарский край: **+7(918)465-66-44**

США, Майами, Флорида: **+1(954)274-4435**

Время работы

Понедельник – Суббота: **9:00 - 21:00**
EDT

Воскресенье: **Закрито**

Адрес



Harbour Towne Marina, 850 NE 3rd St,
STE 213, Dania, FL 33004