

## AB SEAS — ISLAND PACKET YACHTS



**Судостроитель:**  
ISLAND PACKET YACHTS

**Год постройки:** 2002

**Модель:** Крейсер

**Цена:** ЦЕНА ЯХТЫ ПО ЗАПРОСУ

**Местонахождение:** United States

**Длина общая:** 36' 0" (10.97m)

**Ширина:** 12' 0" (3.66m)

**Макс. осадка:** 2' 10" (0.86m)

Купить **AB Seas — ISLAND PACKET YACHTS** а также выбрать подходящую вам яхту из нашего каталога яхт вам поможет опытный яхтенный брокер Андрей Шестаков. На сегодняшний день компания **Shestakov Yacht Sales Inc.** имеет большое количество яхт в собственном списке продаж, а также тесно сотрудничает со всеми крупными яхтенными производителями по всему миру.

Для того чтобы купить яхту **AB Seas — ISLAND PACKET YACHTS** а также проконсультироваться по любому вопросу связанному с покупкой, продажей, чартером яхт позвоните по телефону **+7(918)465-66-44**.

# ОГЛАВЛЕНИЕ

---

ОГЛАВЛЕНИЕ	2
ХАРАКТЕРИСТИКИ	3
Обзор	3
Основная информация	6
Размеры	6
Скорость, вместимость и масса	6
Размещение	6
Корпус и палуба	6
Информация о двигателе	7
ФОТОГРАФИИ	8
КОНТАКТЫ	15
Контактная информация	15
Телефоны	15
Время работы	15
Адрес	15

# ХАРАКТЕРИСТИКИ

## Обзор

This boat is a beautiful, practical Downeast cruiser, kept by knowledgeable yachtsmen with an open check book policy. Classic, downeast styling in a power express boat, manufactured by one of the leading sailing yacht manufactures in the country, Island Packet. Ready to take a load of friends, (seats 10), to dinner / sunset cruise or for a comfortable extended trip to the Bahamas and beyond with loved ones. Professionally maintained, with upgraded, twin dependable, Cummins 370HP diesels, Onan 10kw Generator (New 2013) both full services 5/2015 , helm & salon A/C's. extensive electronics including a Raymarine C-140 14" color plotter, , extended hardtop, Awlgrippped dark blue hull, new exterior upholstery (2014), etc. Quality construction, nice ride and well equipped. AB Seas is clean and will survey well. Owners are moving up and entertaining offers.

**Boat Name** AB Seas **Dimensions** LOA: 41 ft 8 in Beam: 12 ft 0 in Maximum Draft: 2 ft 10 in Dry Weight: 18000 lbs **Engines** Engine 1: Engine Brand: Cummins Engine Model: 6BTA Engine Type: Inboard Engine/Fuel Type: Diesel Location: Port Engine Hours: 1600 Drive Type: Direct Drive Engine Power: 370 HP Engine 2: Engine Brand: Cummins Engine Model: 6BTA Engine Type: Inboard Engine/Fuel Type: Diesel Location: Starboard Engine Hours: 1600 Drive Type: Direct Drive Engine Power: 370 HP **Tanks** Fresh Water Tanks: (75 Gallons) Fuel Tanks: (300 Gallons) Holding Tanks: (30 Gallons) **Outside Equipment/Extras** Electric windlass

### Walk Through / Accommodations

Step down 2 steps from the helm deck into the spacious salon. Below, the entire boat features rich teak paneling and cabinetry, teak and holly sole, Ultraleather fabrics and Corian type countertops. The functional galley is to port and the convertible L-shaped settee is to starboard. There is an optional, removable Teak table,(stowed in photos). The settee has storage below. The head / shower is to port, just forward of the galley, and is accessible from the salon or stateroom. . The stateroom is forward and features a center-line berth, with good storage below and ample cedar lined lockers, cabinet and drawer storage. There are three Lewmar opening hatches, with screens and OceanAir shades. Eight opening Stainless Steel ports offer good below ventilation.

- ***CruiseAir reverse cycle A/C, 16,000 BTU's***
- Teak Table
- Locker and drawer storage
- ***Pioneer AM/FM/CD/USB & Ipad player with 4 speakers (Salon and Cockpit)***
- ***Custom mattress topper***
- ***2 Flat screen TV's Salon TV on swivel bracket for optimal viewing.***
- DVD player
- Powered TV antenna and dockside cable TV hookup
- ***Vacuflush head system with dedicated water supply and Y-valve***
- Reading lamps
- Overhead lighting and courtesy lights

## Galley

- 2 Burner Electric Cooktop
- Stainless Steel Sink
- Pressure Water System
- Corian type Countertops
- Waste Bin
- Microwave
- **Dometic Refrigerator / Freezer (New 3/2015)**
- **Hot Water Heater (Newer)**
- Ample Drawer & Cabinet storage
- Under cabin sole storage

## Helm Deck / Electronics

Seating for 10 in cockpit with Stidd double helm seat and 2 L-shaped settees. Ample storage below settees. **Console had been reconfigured for a better instrument layout and ease of use. New Faria gauges (2013), and electronics (2010).** Fiberglass extended hardtop with 2 Lewmar opening hatches with OceanAir shades. Twin side window vents, center windshield vent(Hardtop bridge deck enclosure holds A/C better and has much better ventilation, when not using A/C, than competitive boats) Overhead lighting and deck courtesy lights

- **Raymarine C-140 Wide 14" color plotter / radar / sounder & digital depth with AIS receiver (New 2010)**
- **Raymarine 48 mile HD Radome (New 2010)**
- **Faria gauges (New 2013)**
- **Helm deck glass all tinted**
- 12 Volt Plug
- Tilt Wheel
- **Engine Synchronization Gauge**
- Drink Holders
- **Removable Teak Table**
- Cockpit Sink & Storage
- **3 Piece Sunbrella drop curtain with windows**
- **Raymarine ST 70 Autopilot with wireless remote. (New 2010)**
- **Raymarine ST 70 Tri Data (New 2010)**
- Icom IC-M502 VHF
- Compass
- Windlass Remote Switch
- **CruiseAir reverse cycle helm A/C, 16,000 BTU's**
- Bennett Trim Tab Controls
- Battery Parallel Switch
- **3 speed Window Defoggers**
- Windshield Wipers and Washers

## Electrical

- 110V A/C, 12V DC
- **4 AGM Batteries**
- 50 AMP dockside service with 50' of cord
- Dual 50 AMP power inlets with single cord splitter
- **25' 50 AMP extension cord**
- **40' Lightweight 56 AMP cord**
- **Upgraded Onan 10 KW Generator (New 2013)**
- 3 Battery Switches
- Battery Combiner
- **2 40 AMP Auto Battery Chargers (One new 2009, the other newer)**
- **Galvonic Isolater**

## Mechanical

Upgraded to Cummins 370 HP with Airseps, 1600 approx. hours. **Fully serviced mains and generator 5/2015, including fluids, filters, impellers and engine zincs.** Service records available

- Racor fuel filters
- **Reverso oil change system (New 2013)**
- Strainers
- Bennett trim tabs
- Macerator pump
- **2 water tanks, 1 dedicated for Vacuflush head system.**
- Fireboy fire suppression system
- **Dripless packing glands**
- Nibral props
- **4 Auto bilge pumps**
- Many spares

## Hull & Deck

Awlgripped Flag Blue Hull. Bottom Paint 10/2014. **New exterior upholstery 2014.** All varnished teak wood exterior accents and steps in excellent condition. Solid hand laid fiberglass hull with foam stringer construction

- **Electric windlass with helm and fore deck controls**
- **3 Piece drop curtain**
- **Delta anchor with chain and rope rode**
- **Anchor washdown**
- Cockpit washdown
- Cockpit shower
- Canvas package includes hatch and window covers, helm cover and cockpit cover
- **Poly-carbonate side wing windows**
- **Cockpit upholstery all replaced 2014**
- **Cockpit Bimini with side screens (Newer)**
- Coast Guard safety package
- Dockside water
- Lines and Fenders

## Exclusions

---

***Personal Items Clock Portable seats Tools Portable Ice Maker 2 fitted life jackets Dehumidifier*****Brokers Comments**

Beautiful boat, ready to cruise. Very well equipped and professionally maintained with an open checkbook, this boat shows as you would expect from such a finely made vessel. Owners have cruised extensively and are moving up. Give a call for your viewing.

---

**Основная информация****Тип судна:** Крейсер**Модельный год:** 2002**Год постройки:** 2002**Страна:** United States

---

**Размеры****Длина общая:** 36' 0" (10.97m)**Ширина:** 12' 0" (3.66m)**Макс. осадка:** 2' 10" (0.86m)

---

**Скорость, вместимость и масса****Водоизмещение:** 18000 Pounds**Вместимость воды:** 75 Gallons**Вместимость сточного бака:** 30 Gallons**Объем топливного бака:** 300 Gallons

---

**Размещение****Всего кают:** 1**Всего ком. состава:** 1

---

**Корпус и палуба****Материал корпуса:** Fiberglass

## Информация о двигателе

---

**Производитель:** Cummins

**Модель:** 6BTA

**Тип двигателя:** Inboard

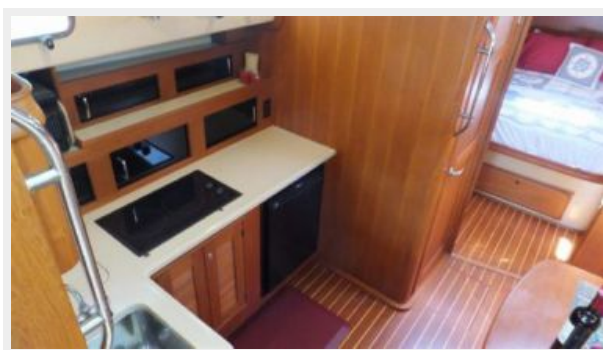
**Тип топлива:** Diesel

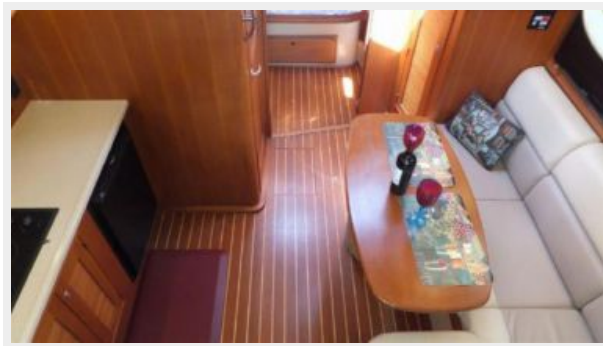
# ФОТОГРАФИИ

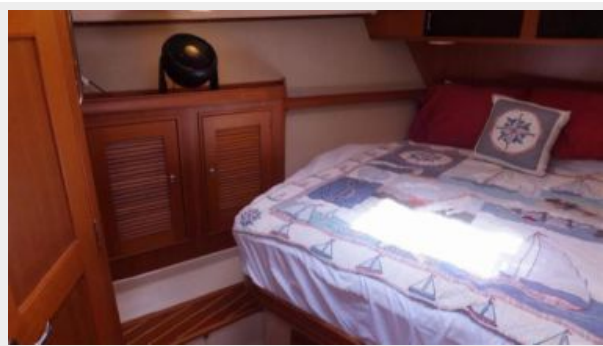


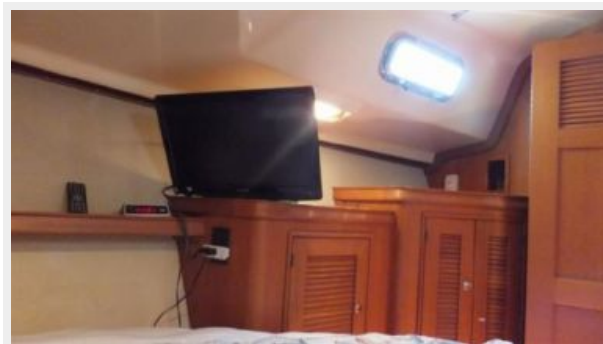














# КОНТАКТЫ

---

Андрей Шестаков (Andrey Shestakov) – ведущий яхтенный брокер отдела продаж яхт и судов компании Shestakov Yacht Sales Inc. Официальный представитель Shestakov Yacht Sales Inc. для русскоговорящих клиентов в центральном офисе компании в Майами/Форт Лодердейл/Флорида/США.

## Контактная информация

---

Email: [andrey@shestakovyachtsales.com](mailto:andrey@shestakovyachtsales.com)

Web: [shestakovyachtsales.com](http://shestakovyachtsales.com)

## Телефоны

---

Краснодарский край: **+7(918)465-66-44**

США, Майами, Флорида: **+1(954)274-4435**

## Время работы

---

Понедельник – Суббота: **9:00 - 21:00**  
EDT

Воскресенье: **Закрито**

## Адрес

---



Harbour Towne Marina, 850 NE 3rd St,  
STE 213, Dania, FL 33004