

INSIGNIA — SUNSEEKER



Builder: SUNSEEKER

LOA: 115' 0" (35.05m)

Year Built: 2015

Beam: 24' 3" (7.39m)

Model: Motor Yacht

Max Draft: 7' 10" (2.39m)

Price: PRICE ON APPLICATION

Location: United States

Our experienced yacht broker, Andrey Shestakov, will help you choose and buy a yacht that best suits your needs **INSIGNIA — SUNSEEKER** from our catalogue. Presently, at Shestakov Yacht Sales Inc., we have a wide variety of yachts available on our sale's list. We also work in close contact with all the big yacht manufacturers from all over the world.

If you would like to buy a yacht **INSIGNIA — SUNSEEKER** or would like help answering any questions concerning purchasing, selling or chartering a yacht, please call **+1(954)274-4435**

TABLE OF CONTENTS

TABLE OF CONTENTS	2
SPECIFICATIONS	3
Overview	3
Basic Information	3
Dimensions	3
Speed, Capacities and Weight	3
Accommodations	3
Hull and Deck Information	4
Engine Information	4
DETAILED INFORMATION	5
Accommodations	5
Deck Equipment	6
Cockpit	6
Fly Bridge	7
Fly Bridge Helm	7
Galley	7
Mechanical	8
Exclusions	8
Disclaimer	8
PHOTOS	9
CONTACTS	17
Contact details	17
Telephones	17
Office hours	17
Address	17

SPECIFICATIONS

Overview

Sunseeker's remarkable sport yacht featuring a perfect blend of power and sophistication. Raised pilothouse, on deck master, accommodations for 10 guests and 5 crew.

Basic Information

Category: Motor Yacht

Sub Category: Flybridge

Model Year: 2015

Year Built: 2015

Country: United States

Vessel Top: Hardtop

Dimensions

LOA: 115' 0" (35.05m)

LWL: 88' 5" (26.95m)

Beam: 24' 3" (7.39m)

Max Draft: 7' 10" (2.39m)

Speed, Capacities and Weight

Displacement: 298201 Pounds

Water Capacity: 1031 Gallons

Holding Tank: 335 Gallons

Fuel Capacity: 3723 Gallons

Accommodations

Total Cabins: 5

Sleeps: 10

Total Heads: 5

Captain Cabin: True

Crew Berths: 5

Crew Heads: 3

Hull and Deck Information

Hull Material: Fiberglass

Engine Information

Engines: 2

Manufacturer: MTU

Model: 16V 2000 M94

Engine Type: Inboard

Fuel Type: Diesel

DETAILED INFORMATION

Accommodations

Main Salon

- Aft sliding doors in stainless steel and safety glass
- American Black Walnut interior
- Electric blinds and curtains throughout
- 65" Flat screen TV on rise and fall
- ORCA AV system
- Air conditioning

Dining Area

- Dining table w/seating for up to 10 guests
- Side console cabinets
- Chinaware, glassware and cutlery (10 settings)
- Air conditioning
- Access on starboard side to Foyer, Day Head, Pilothouse, Crew Quarters & Master suite

Main Deck Master Stateroom

- King size centerline berth
- 2 x Nightstands
- Bedside lights
- Sofa
- ORCA AV system
- Electric black out blinds
- Dressing table w/chair
- Storage cabinets and drawers
- Air conditioning
- Walk-in closet
- Dual access to Master En Suite
- 2 x washbasins and vanity top
- Stone floor
- Bath
- Shower cubicle w/glass door

Lower Deck Aft Port & Starboard Mirror Staterooms

- Double berth
- Nightstands
- Bedside lights
- Flat screen television (32")

- Entertainment system with DVD and CD
- Fixed port lights with electric black out blinds
- Dressing table & stool
- Stool for dressing table
- Air conditioning
- En Suite head w/shower

Lower Deck Forward Port & Starboard Mirror Staterooms

- Twin berths drawer storage below
- Nightstand between berths
- Hanging locker
- Flat screen TV
- En Suite head w/shower

Deck Equipment

- Side bulwark door on port and starboard sides
- 2 x anchor windlass w/hand control
- 2 x hawses with roller, chain stopper and devil's claw
- 2 x anchors with galvanized chain
- Fairleads bow and stern, port and starboard
- Anchor and chain wash down
- Fresh water deck wash with outlets forward and aft
- Teak-laid side decks and foredeck area
- Teak forepeak deck area
- Low-level lighting along side decks 24v
- Foredeck sunpad w/back rests at both ends
- Seating area with table

Cockpit

- Curved aft deck settee
- Teak table w/hi-gloss finish and custom compass rose inlay
- 4 x Director chairs
- Retractable canopy
- Storage lockers
- Teak stair treads to flybridge deck
- Teak-laid cockpit floor
- Teak-laid stair treads on port and starboard sides leading to bathing platform
- Teak-laid, hydraulic swim platform (fixed on outboard sides)
- Stainless steel framed sliding doors to main saloon
- Side deck door and stairs leading to engine room

- Hydraulic passerelle
- Power operated door leading to stern garage
- Stern garage (including recovery system) with storage
- Swim ladder
- Hot/cold water hand-held shower

Fly Bridge

- Direct access from pilothouse or cockpit
- Teak Decking
- Hardtop
- 40" LCD TV, drops down from hardtop
- 3 x Pairs of marine speakers w/remote control
- 2 x L-settee w/teak top tables
- 3 x Fixed bar stools plus 4 standard bar stools
- 6 x Director chairs
- Wet bar w/hot & cold water, 2 x refrigerators, icemaker and cabinet storage
- Uplighters in wetbar
- Large sunpad w/adjustable backrests both fore and aft

Fly Bridge Helm

- Individual, manually adjustable pilot and co-pilot seats (P)
- 2 x Helm chairs (S)
- GRP console with dashboard panels
- Electronic controls for main engines
- Analog engine instrumentation
- Bow thruster control
- Depth and speed display
- Rudder angle indicator
- Autopilot repeater
- Radar, chart plotter and GPS fed to 2 x PC repeater displays
- Magnetic compass
- VHF

Galley

- Stone countertops
- 2 x Electric oven
- 2 x Warming ovens
- Microwave oven
- Refrigerator

- Freezer
- Icemaker
- Dishwasher
- Electric ceramic cooktop
- Air conditioning

Butler's Pantry

- Portside, aft of galley
- Stone countertops
- Wine Cooler
- Free standing coffee machine

Mechanical

- Twin MTU 16V 2000 M94's @2640 hp each
- 2 x 55kW generators
- Bow Thruster

Exclusions

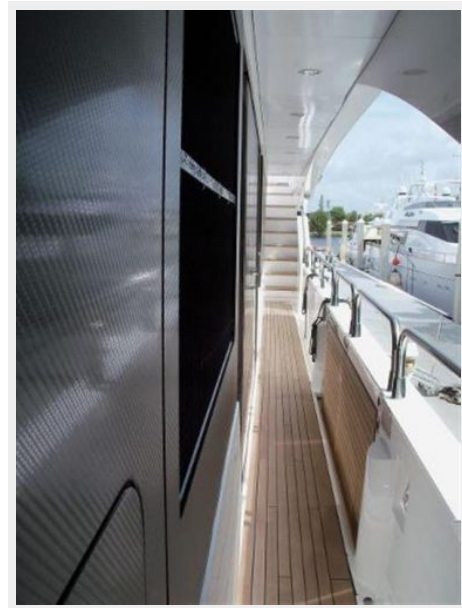
Owner's personal belongings.

Disclaimer

The Company offers the details of this vessel or yacht in good faith but cannot guarantee or warrant the accuracy of this information nor warrant the condition of the vessel. A buyer should instruct his representatives, agents, or his surveyors, to investigate such details as the buyer desires validated. This vessel or yacht is offered subject to prior sale, price change, or withdrawal without notice.

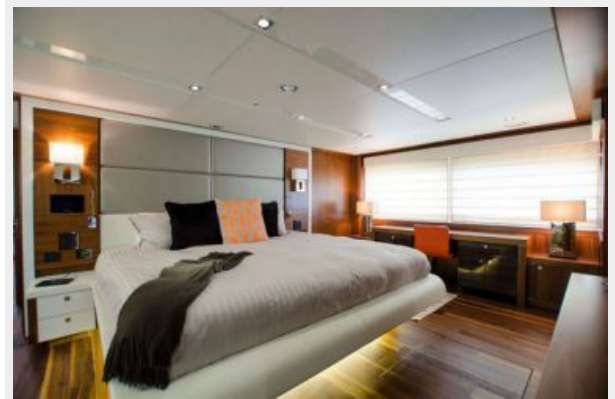
PHOTOS





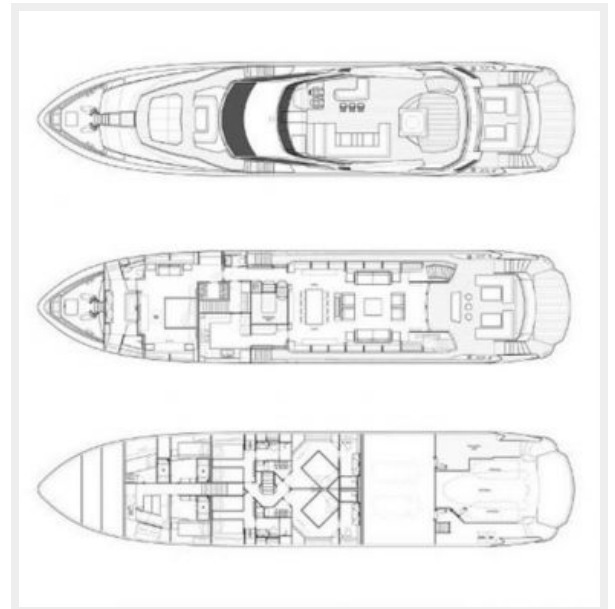
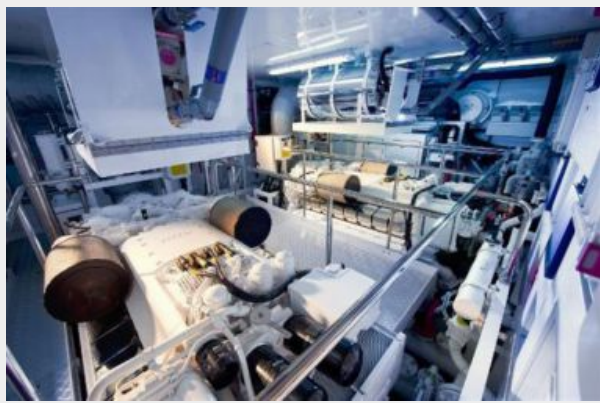












CONTACTS

Andrey Shestakov, leading yacht broker of the sales department of Shestakov Yacht Sales Inc. Shestakov Yacht Sales Inc., the official representative of the Miami/Fort Lauderdale FL headquarters.

Contact details

Email: andrey@shestakovyachtsales.com

Web: shestakovyachtsales.com/en/

Telephones

USA: +1(954)274-4435

Office hours

Monday – Saturday: **9:00 - 21:00** EDT

Sunday: **closed**

Address



Harbour Towne Marina, 850 NE 3rd St,
STE 213, Dania, FL 33004