

CAROLINA GENTLEMAN — POST MARINE



Builder: Post Marine

Year Built: 1988

Model: Sport Fisherman

Price: PRICE ON APPLICATION

Location: United States

LOA: 46' 0" (14.02m)

Beam: 15' 9" (4.80m)

Max Draft: 3' 10" (1.17m)

Our experienced yacht broker, Andrey Shestakov, will help you choose and buy a yacht that best suits your needs **Carolina Gentleman — Post Marine** from our catalogue. Presently, at Shestakov Yacht Sales Inc., we have a wide variety of yachts available on our sale's list. We also work in close contact with all the big yacht manufacturers from all over the world.

If you would like to buy a yacht **Carolina Gentleman — Post Marine** or would like help answering any questions concerning purchasing, selling or chartering a yacht, please call **+1(954)274-4435**

TABLE OF CONTENTS

TABLE OF CONTENTS	2
SPECIFICATIONS	4
Basic Information	4
Dimensions	4
Speed, Capacities and Weight	4
Accommodations	4
Hull and Deck Information	4
Engine Information	5
DETAILED INFORMATION	6
Electronics	6
Exclusions	6
Disclaimer	6
PHOTOS	7
Cockpit	7
Profile	7
Custom Console	7
Custom Console	7
Salon	8
Salon/Galley	8
Salon Seating	8
Galley	8
Bunk Room	8
Master Stateroom	8
Master Head	9
Master Stateroom	9
Engine Room	9
New Wiring	9
Engine Room	9

Engine Room	9
A/C	10
Northern Lights Generator	10
The latest transducers	10
Engine Room	10
CONTACTS	11
Contact details	11
Telephones	11
Office hours	11
Address	11

SPECIFICATIONS

Basic Information

Category: Sport Fisherman

Sub Category: Convertible

Model Year: 1988

Year Built: 1988

Country: United States

Dimensions

LOA: 46' 0" (14.02m)

Beam: 15' 9" (4.80m)

Max Draft: 3' 10" (1.17m)

Speed, Capacities and Weight

Displacement: 44000 Pounds

Water Capacity: 120 Gallons

Holding Tank: 31 Gallons

Fuel Capacity: 620 Gallons

Accommodations

Total Cabins: 2

Total Heads: 2

Hull and Deck Information

Hull Material: Fiberglass

Engine Information

Engines: 2

Manufacturer: Detroit Diesel

Model: 6v92 DDEC

Engine Type: Inboard

Fuel Type: Diesel

DETAILED INFORMATION

Electronics

- (1) NSS 12" Touch Screen Display
- (2) Simrad 16" NSO Touch Screen Display
- (1) NSO 24", Touch Screen Display
- Simrad autopilot networked with all displays
- Gofree wireless
- Wireless Simrad VHF
- Forward looking camera
- (3) 4" IS40 multifunction displays
- AIS
- Sonar hub
- Sonic hub
- Bluetooth,
- Sirius radio
- Airmar b265 low/high chirp transducer
- Forward scan
- Structure scan
- 4G 48 mile broadband radar
- 6kw 72 mile open array
- 19" Simrad in cockpit display with autopilot and camera functions
- New 40 amp battery charger

Exclusions

Owner's personal belongings.

Disclaimer

The Company offers the details of this vessel or yacht in good faith but cannot guarantee or warrant the accuracy of this information nor warrant the condition of the vessel. A buyer should instruct his representatives, agents, or his surveyors, to investigate such details as the buyer desires validated. This vessel or yacht is offered subject to prior sale, price change, or withdrawal without notice.

PHOTOS

Profile



Cockpit



Custom Console



Custom Console



Salon



Salon/Galley



Salon Seating



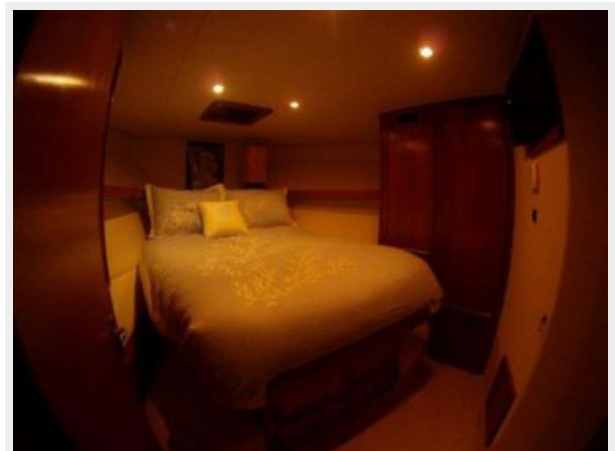
Galley



Bunk Room



Master Stateroom



Master Head



Master Stateroom



Engine Room



New Wiring



Engine Room



Engine Room



A/C



Northern Lights Generator



The latest transducers



Engine Room



CONTACTS

Andrey Shestakov, leading yacht broker of the sales department of Shestakov Yacht Sales Inc. Shestakov Yacht Sales Inc., the official representative of the Miami/Fort Lauderdale FL headquarters.

Contact details

Email: andrey@shestakovyachtsales.com

Web: shestakovyachtsales.com/en/

Telephones

USA: +1(954)274-4435

Office hours

Monday – Saturday: **9:00 - 21:00** EDT

Sunday: **closed**

Address



Harbour Towne Marina, 850 NE 3rd St,
STE 213, Dania, FL 33004