

## ISLAND PACKET 40 — ISLAND PACKET YACHTS



**Builder:** ISLAND PACKET YACHTS

**LOA:** 40' 0" (12.19m)

**Year Built:** 1996

**Model:** Cruising Sailboat

**Price:** PRICE ON APPLICATION

**Location:** United States

Our experienced yacht broker, Andrey Shestakov, will help you choose and buy a yacht that best suits your needs **Island Packet 40 — ISLAND PACKET YACHTS** from our catalogue. Presently, at **Shestakov Yacht Sales Inc.**, we have a wide variety of yachts available on our sale's list. We also work in close contact with all the big yacht manufacturers from all over the world.

If you would like to buy a yacht **Island Packet 40 — ISLAND PACKET YACHTS** or would like help answering any questions concerning purchasing, selling or chartering a yacht, please call **+1(954)274-4435**

# TABLE OF CONTENTS

TABLE OF CONTENTS	2
SPECIFICATIONS	3
Basic Information	3
Dimensions	3
Accommodations	3
Hull and Deck Information	3
Engine Information	3
DETAILED INFORMATION	4
Accommodations	4
Salon	4
Electrical Equipment	5
Mechanical	6
Hull	6
Exclusions	7
Disclaimer	7
PHOTOS	8
CONTACTS	10
Contact details	10
Telephones	10
Office hours	10
Address	10

# SPECIFICATIONS

## Basic Information

Category: Cruising Sailboat	Sub Category: Cutter
Model Year: 1996	Year Built: 1996
Country: United States	

## Dimensions

LOA: 40' 0" (12.19m)	MFG Length: 40' 0" (12.19m)
----------------------	-----------------------------

## Accommodations

Total Cabins: 2	Total Berths: 4
Total Heads: 2	

## Hull and Deck Information

Hull Material: Fiberglass
---------------------------

## Engine Information

Engines: 1	Manufacturer: Yanmar
Engine Type: Inboard	Fuel Type: Diesel

---

# DETAILED INFORMATION

---

## Accommodations

---

(2) Cabins –

(2) heads w/showers – NEW (2) Electric Raritan Heads -

(2) Additional berths available in Salon

(5) Cabin fans

Entire Vessel is Well Ventilated with 13 Opening Ports Along Both Sides and 7 Opening Hatches

**Master Cabin:** Forward, the full width **owner's stateroom** features an oversized offset double berth with reading light, shelf that runs full length of berth, large cedar-lined hanging locker, bureau with storage bins & 6 deep cedar-lined drawers. The adjoining private head is forward featuring a large shower with big teak seat & contoured backrest, wraparound vanity, storage cabinets and large mirror.

Queen sized berth

Opening ports and overhead hatch

Hanging locker and drawer storage along Port side

New Electric Rarian Head & shower

**Aft cabin:** The roomy **aft stateroom** is also inviting with a huge double berth, dressing seat, cedar-lined hanging locker & storage bureau. The centrally located aft head has private access from aft stateroom & from companionway with its separate shower with removable teak seat, wrap around vanity, full-length mirror, & generous storage areas.

LargeDouble berth

Storage lockers

Opening ports and hatch

New Electric Raritan head & shower

---

## Salon

---

**Salon:** Salon is large and spacious with apposing settees ( L- shaped settee to starbd) . A dining table folds down on Starbd side for dining. Wine rack behind Salon Table. Numerous storage lockers and shelving on either side. All finished in HIGH QUALITY woodwork. Teak and holly floor throughout.

## **Galley**

(3) Burner Princess LPG stove w/oven

(2) 10 lb Propane tanks

Top load Refrigerator/Freezer – Adler Barber (freezer makes ice)

SS double sink w/ hot/cold pressure water

Fresh water hand pump,

Water filter

Water heater

Storage cabinets with sliding doors –outboard

Lower storage cabinets under counter

## **Electrical Equipment**

---

### **ELECTRONICS:**

Stereo – Sony w.CD player and USB connector for MP3 player

Epirb

Binnacle compass at helm -

VHF radio at Nav station-Icom m402 w/DSC

SSB radio at Nav station -Icom

Knott meter – Raymarine ST60 ( at helm)

Depth meter - Raymarine ST60 ( at helm)

Radar – Raymarine ( at Nav Station) -

Auto Pilot – Simrad linear Hydraulic ( at helm)

Wind direction indicator – Raymarine ST60

## ELECTRICAL

Batteries – House bank and separate start battery

Solar panels on aft arch – (2) x 250 SWatt Kyocera panels w/Morningstar controller ( mechanical)

Inverter/battery charger

30 Amp shore power cord

AC/DC circuit breaker panel

## Mechanical

---

Yanmar Diesel engine - 4JH5 55 HP 20 hours ( NEW May 2015)

3 blade fixed propeller

Racor fuel filter/separator

Electric windlass - NEW 2009 -

Electric bilge pump, electric shower sump pump

Manual bilge pump

## Hull

---

**Island Packet quality built fiberglass hull in IP-Off White – hull and deck. The Island Packet line is well known for their offshore capability and stability with a full length keel, and protected propeller and rudder. She has a secure toe tail and high lifelines and railings.**

Anchors: (1) 55 lb Delta on 300 ft of chain, (1) 45 lb CQR

Bow sprit with anchor roller and bob-stay

SS Radar Arch ( aft) w/ davits and motor lift

Bimini and dodger

Cockpit shower

Cockpit cushions

Swim Platform w/ladder

Stern Bar B Que - propane

Opening hatches and Dorrade vents

SS Bow rail – extends over Bow Sprit

SS Stern push pit

SS Stanchions w/ Double lifelines

**COCKPIT:** large cockpit – fully protected by Bimini top and dodger

Pedestal steering w/ instrument pod

Folding teak table

Teak trimmed comings

SS Railing with stern gate to swim platform

## Exclusions

---

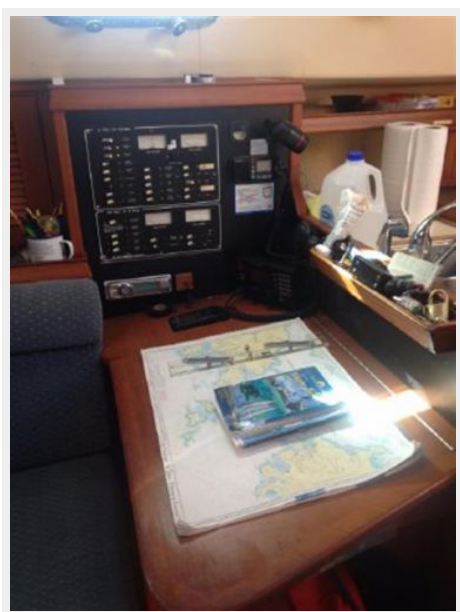
Owner's personal belongings.

## Disclaimer

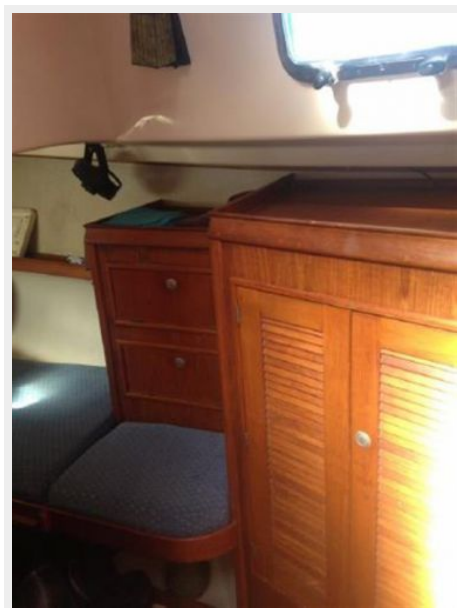
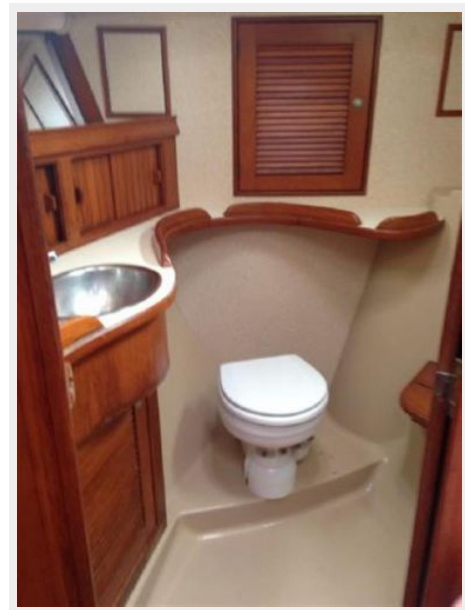
---

The Company offers the details of this vessel or yacht in good faith but cannot guarantee or warrant the accuracy of this information nor warrant the condition of the vessel. A buyer should instruct his representatives, agents, or his surveyors, to investigate such details as the buyer desires validated. This vessel or yacht is offered subject to prior sale, price change, or withdrawal without notice.

# PHOTOS







# CONTACTS

---

Andrey Shestakov, leading yacht broker of the sales department of Shestakov Yacht Sales Inc. Shestakov Yacht Sales Inc., the official representative of the Miami/Fort Lauderdale FL headquarters.

## Contact details

---

Email: **andrey@shestakovyachtsales.com**

Web: [shestakovyachtsales.com/en/](http://shestakovyachtsales.com/en/)

## Telephones

---

USA: **+1(954)274-4435**

## Office hours

---

Monday – Saturday: **9:00 - 21:00 EDT**

Sunday: **closed**

## Address

---



Harbour Towne Marina, 850 NE 3rd St,  
STE 213, Dania, FL 33004