

41FT 2001 LAGOON 410 4 CABIN LAYOUT — LAGOON



Builder: LAGOON

Year Built: 2001

Model: Cruising Sailboat

Price: PRICE ON APPLICATION

Location: Guatemala

LOA: 41' 0" (12.50m)

Beam: 23' 3" (7.09m)

Max Draft: 3' 11" (1.19m)

Our experienced yacht broker, Andrey Shestakov, will help you choose and buy a yacht that best suits your needs 41ft 2001 Lagoon 410 4 Cabin Layout — LAGOON from our catalogue. Presently, at Shestakov Yacht Sales Inc., we have a wide variety of yachts available on our sale's list. We also work in close contact with all the big yacht manufacturers from all over the world.

If you would like to buy a yacht 41ft 2001 Lagoon 410 4 Cabin Layout — LAGOON or would like help answering any questions concerning purchasing, selling or chartering a yacht, please call **+1(954)274-4435**

TABLE OF CONTENTS

TABLE OF CONTENTS	2
SPECIFICATIONS	3
Basic Information	3
Dimensions	3
Speed, Capacities and Weight	3
Accommodations	3
Hull and Deck Information	3
Engine Information	4
DETAILED INFORMATION	5
Specifications	5
Equipment	5
Sail Area	6
Manufacturer Provided Description	6
Exclusions	7
Disclaimer	7
PHOTOS	8
CONTACTS	16
Contact details	16
Telephones	16
Office hours	16
Address	16

SPECIFICATIONS

Basic Information

Category: Cruising Sailboat

Model Year: 2001

Year Built: 2001

Country: Guatemala

Dimensions

LOA: 41' 0" (12.50m)

LWL: 38' 3" (11.66m)

Beam: 23' 3" (7.09m)

Max Draft: 3' 11" (1.19m)

Clearance: 60' 0" (18.29m)

Speed, Capacities and Weight

Displacement: 15900 Pounds

Water Capacity: 116 Gallons

Fuel Capacity: 52 Gallons

Accommodations

Total Cabins: 4

Total Berths: 4

Total Heads: 4

Hull and Deck Information

Hull Material: Fiberglass

Engine Information

Engines: 2

Manufacturer: Yanmar

Engine Type: Inboard

Fuel Type: Diesel

DETAILED INFORMATION

Specifications

Builder:	Jeanneau
Designer:	Marc Van Peteghem / Vincent Lauriot Prévost
Built:	2001
Model:	Lagoon 410
Length Overall:	12.37m (40'7")
LWL:	11.67m (38'4")
Beam:	7.09m (23'3")
Headroom	1.90m (6'3")
Draft:	1.20m (3'11")
Displacement:	9,180kg (20,240bs)
Mast height:	18m / 59'
Sail Area:	(main , with two rows of slab reefing; with Jib 348 sq ft.(jib is auto Furling)
Aux Power :	Yanmar 3YM30 Diesels 2 x 29 HP fitted to sail drives
Speed:	Cruise 7.5 knots / Max 8.5 knots
Water Tankage	2 x 100 US gallons
Fuel Tankage	2 x 25 US Gal
Accommodations:	4 cabins 2 heads Galley Up

Equipment

Accommodations:

- 4 double cabins
- 2 heads with showers
- Cabin fans
- Large sitting/dining area

Galley:

- FRIGOBOAT refrigerator (2 compartments)
- Two burner stove and oven
- vented compartment under cockpit seat
- Tons of storage beneath settee seats

Navigation, Safety and Communications:

- VHF radio
- 2 GPS units
- 3G. Internet,
- Wind speed
- depth indicators
- Autopilot
- speed log

Personal safety equipment for each individual:

- First Aid Kit

Recreation :

- Barbeque
- Swim Platforms
- Deck Showers
- Sun Deck
- Bimini
- Trampolines

Entertainment Equipment:

- LCD TV Screens
- Stereo CD Player - Indoor/Outdoor Speakers

Electrical:

- Catadyn E80 / 3.5 G/h Watermaker
- Solar panels
- 110V Inverter

Dinghy:

- Dinghy 10 Feet
- engine 9.9hp

Sail Area

IJPE : 773.00 sq ft I : 45.33 ft J : 14.08 ft P : 48.58 ft E : 18.67 ft Working Sail Area : 759.00 sq ft

Manufacturer Provided Description

Conceived to meet the highest standards, the Lagoon 410 is innovative and traditional at the same time. Naval architects Marc Van Peteghen and Vincent Lauriot Prévost have optimized the

410's performance while providing four double cabins and up to four independent bathrooms, ensuring everyone's privacy. The standard model includes four cabins and two large bathrooms. The vast galley and living area, which opens directly to the cockpit through a wide, sliding door, maintains the characteristic Lagoon conviviality with a 360-degree vista. The cockpit, well protected by the roof, is the focal point for exterior activities. The portside directly accesses the sea, while the starboard-side table can seat up to ten people. The placement of the helm station at the roof's rear provides a wider view, and by freeing up the rear cockpit, provides more space. In the front, the transverse net provides a superb, secure location for communing with the sea and the dolphins.

Exclusions

Owner's personal belongings.

Disclaimer

The Company offers the details of this vessel or yacht in good faith but cannot guarantee or warrant the accuracy of this information nor warrant the condition of the vessel. A buyer should instruct his representatives, agents, or his surveyors, to investigate such details as the buyer desires validated. This vessel or yacht is offered subject to prior sale, price change, or withdrawal without notice.

PHOTOS

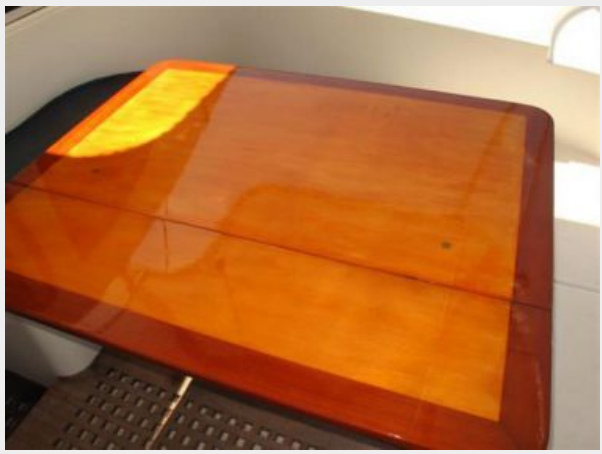


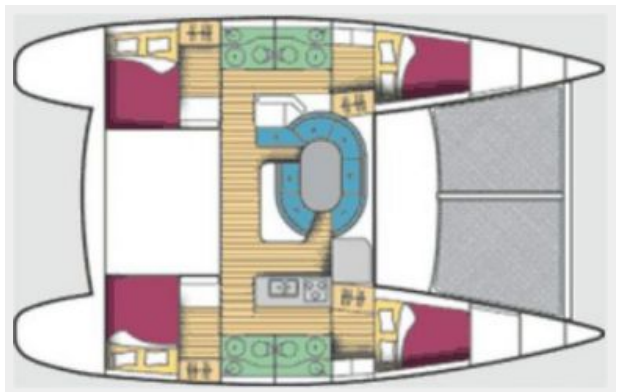
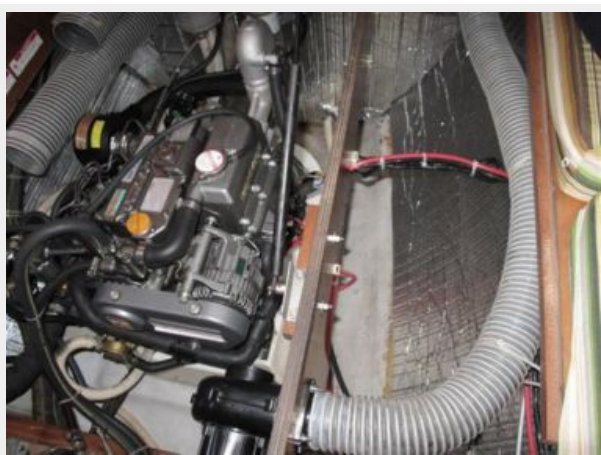


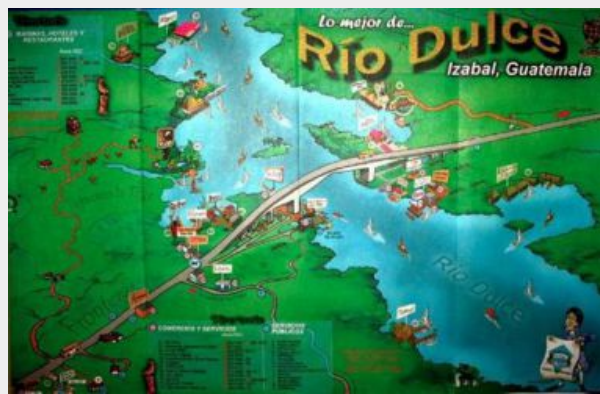
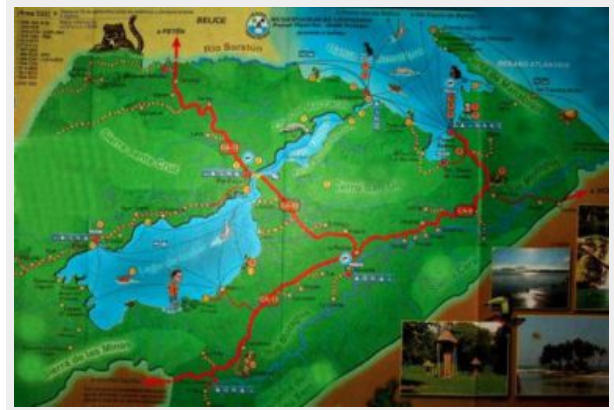
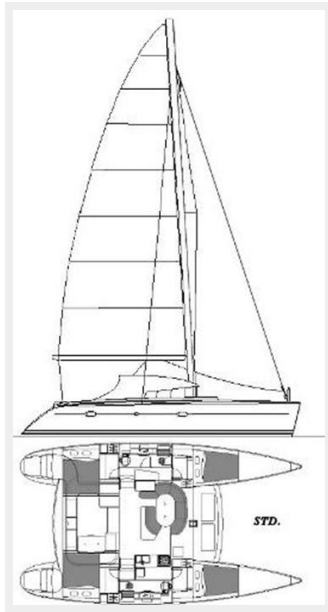












CONTACTS

Andrey Shestakov, leading yacht broker of the sales department of Shestakov Yacht Sales Inc. Shestakov Yacht Sales Inc., the official representative of the Miami/Fort Lauderdale FL headquarters.

Contact details

Email: andrey@shestakovyachtsales.com

Web: shestakovyachtsales.com/en/

Telephones

USA: +1(954)274-4435

Office hours

Monday – Saturday: **9:00 - 21:00** EDT

Sunday: **closed**

Address



Harbour Towne Marina, 850 NE 3rd St,
STE 213, Dania, FL 33004