

40FT 2008 BENETEAU OCEANIS 40 — BENETEAU



Builder: BENETEAU

Year Built: 2008

Model: Cruising Sailboat

Price: PRICE ON APPLICATION

Location: United States

LOA: 40' 0" (12.19m)

Beam: 12' 8" (3.86m)

Max Draft: 5' 9" (1.75m)

Our experienced yacht broker, Andrey Shestakov, will help you choose and buy a yacht that best suits your needs 40ft 2008 Beneteau Oceanis 40 — BENETEAU from our catalogue. Presently, at Shestakov Yacht Sales Inc., we have a wide variety of yachts available on our sale's list. We also work in close contact with all the big yacht manufacturers from all over the world.

If you would like to buy a yacht 40ft 2008 Beneteau Oceanis 40 — BENETEAU or would like help answering any questions concerning purchasing, selling or chartering a yacht, please call +1(954)274-4435

TABLE OF CONTENTS

TABLE OF CONTENTS	2
SPECIFICATIONS	4
Overview	4
Basic Information	4
Dimensions	4
Speed, Capacities and Weight	4
Accommodations	4
Hull and Deck Information	5
Engine Information	5
DETAILED INFORMATION	6
Key Features	6
Specifications	6
Sail Area	10
Description	10
Cockpit	11
Wood Finish	11
Electrical	11
Galley	12
Engine	12
Hull	13
Deck	13
Keel	13
Manufacturer Provided Description	13
Exclusions	14
Disclaimer	14
PHOTOS	15
CONTACTS	26
Contact details	26

Telephones	26
Office hours	26
Address	26

SPECIFICATIONS

Overview

This well equipped Beneteau 40 Oceanis 3 cabin has had many recent upgrades but the owner's sailing plans have changed. New UK performance sails, New Bimini/canvas, New 6 KW Northern Lights generator. This is a great value considering her age and all the new equipment. DYSID:2846551

Basic Information

Category: Cruising Sailboat

Model Year: 2008

Year Built: 2008

Country: United States

Dimensions

LOA: 40' 0" (12.19m)

LWL: 34' 0" (10.36m)

Beam: 12' 8" (3.86m)

Max Draft: 5' 9" (1.75m)

Clearance: 58' 10" (17.93m)

Speed, Capacities and Weight

Displacement: 18210 Pounds

Water Capacity: 95 Gallons

Fuel Capacity: 53 Gallons

Accommodations

Total Cabins: 3

Total Berths: 3

Total Heads: 2

Hull and Deck Information

Hull Material: Fiberglass

Hull Configuration: Monohull

Engine Information

Engines: 1

Manufacturer: Yanmar

Engine Type: Inboard

Fuel Type: Diesel

DETAILED INFORMATION

Key Features

New Mainsail and Jib

New Bimini, Dodger, Stack Pack and Sun Shades

New 6 KW Northern Lights Generator with 607 Hours

Specifications

- BUILDER: Beneteau
- WHERE BUILT: Beneteau USA
- MODEL YEAR: 2008
- YEAR BUILT: 2007
- YEAR/MONTH COMMISSIONED: November 2007
- HULL NO (HIN):US-BEYXXXXXK708
- REGISTRATION NUMBER:
- FLAG: US
- LOA: M 12.17 FT 39' 11"
- BEAM: M 3.96 FT 13'
- DRAFT: M 1.60 FT 5'3"
- DISPLACEMENT: 7,680 kg/16,931 lbs
- KEEL BALLAST: Iron
- SAIL AREA: 78.3 sq. meters 843 sq feet **CONSTRUCTION**

- HULL: Solid Glass Reinforced Plastic (GRP)
- DECK MATERIAL: Textured G.R.P. With teak in cockpit and swim platform, balsa core.
- STEERING SYSTEM: Twin wheels at twin helms
- RUDDER TYPE: Spade
- KEEL TYPE: Fin & bulb

ENGINE

- NO OF ENGINES: 1
- MAKE/AGE: Yanmar
- MODEL:3JH4E
- HP: 40
- FUEL: Diesel
- NO. OF CYLINDERS: 3
- COOLING SYSTEM: Heat exchange

- HOURS RUN/DATE: 3300
- TYPE OF GEAR BOX(S):KANZAKI KM35P
- TYPE OF CONTROLS: TFX
- DRIVE TO PROP: Shaft
- TYPE OF PROP: 3 Blade fixed prop

ELECTRICS

- VOLTAGE: 12 volt/110 volt
- NO OF BATTERIES: 1 house/1 engine
- CAPACITY: 92 Ah house 55Ah engine
- MAKE: DEKA AGM
- YEAR: 2011
- METHOD OF CHARGING: Alternator and 25 amp battery charger
- ALTERNATOR: 80 amp
- GENERATOR: 6 KW Northern Lights
- SHORE POWER : 110 volt
- SHORE POWER CABLE: Yes

TANKAGE

- NO OF FUEL TANKS:1
- MATERIAL: Roto-moulded
- CAPACITY OF FUEL TANKS:
- LITRES: 200 GALLONS: 53
- NO OF WATER TANKS: 2
- MATERIAL: Roto-moulded
- CAPACITY OF WATER TANKS:
- LITRES: 360 GALLONS: 95
- HOLDING TANKS: Yes

WATER SYSTEM

- PRESSURISED: H&C Fresh water
- WATER HEATING SYSTEM: 7 gallon heated by shore power and engine exchanger

RIG

- TYPE: Sloop Rig
- SPAR MAKER: Z SPARS
- SPAR MATERIAL: Anodized Alum. deck stepped
- STANDING RIGGING MATERIAL: Braided Stainless Steel 1X19
- BACKSTAYS: Double
- LAST REPLACED: Original
- RUNNING RIGGING MATERIAL: Cored Braided Line
- MAINSAIL REEFING: Single line reefing with in-mast groove for slides

- HEADSAIL ROLLER FURLING: Profurl

SAILS

- TYPE: Mainsail
- MAKER: QUANTUM
- YEAR: 2014
- TYPE: Genoa 140 %
- MAKER: QUANTUM
- YEAR: 2014
- TYPE: Lazy bag
- MAKER: QUANTAM
- YEAR: 2014

WINCHES

- GENOA WINCHES: (2)
- MAKE: Lewmar 46CSTs
- SPEED: 2
- SELF TAILING: Yes
- HALYARD WINCHES: (2) on coach roof
- MAKE: Lewmar 40CSTs
- SPEED: 2
- SELF TAILING: Yes
- REEFING AND GENOA FURL WINCHES:(2)on coach roof
- MAKE: Lewmar 40 CSTs
- SPEED: 2
- SELF TAILING: Yes
- ALL LINES LEAD TO COCKPIT

ACCOMMODATIONS

- NO OF BERTHS: 8
- DOUBLES: 4 including convertible dinette
- NO. OF CABINS: 3
- AFT CABINS: 2
- COOKER TYPE: 2 burner S/S gimbaled
- NO OF BURNERS: 2
- OVEN: Yes with broiler
- GRILL: Stern rail Bar B Q
- FUEL: Propane
- MICROWAVE: No
- FRIDGE: 12 volt with freezer
- SINK: (1) Double basin in galley
- NO. HEADS: (2)

- MAKE: Jabsco manual
- HANDBASIN: (2)
- SHOWER: (2) plus transom
- CABIN HEATING/AIR CONDITIONING: Yes
- UPHOLSTERY/COLOUR SCHEME: Cream
- INTERIOR CONSTRUCTION/WOOD TYPE: Cherry stained marine ply
- WHICH LAYOUT VERSION: 3 cabin 2 head

GROUND TACKLE

- PRIMARY ANCHOR: DELTA 45 with all chain
- SECONDARY ANCHOR: DANFORTH 25 with chain and rope
- WINDLASS: Electric 12 volt
- MAKE: QUICK

NAVIGATION AIDS

- COMPASS: (2) Plastimo
- AGE: Original
- ECHOSOUNDER: Raymarine Tridata ST60
- AGE: Original
- SPEED: Raymarine Tridata ST60
- AGE: Original
- LOG: Raymarine Tridata ST60
- AGE: Original
- WIND: Raymarine Tridata ST 60
- AGE: Original
- AUTO PILOT: RAYMARINE ST6002
- AGE: Original
- VHF: ICOM 412
- AGE: Original
- GPS: RAYMARINE C90W
- AGE: Original

GENERAL EQUIPMENT

- HORN: Hand
- FIRE FIGHTING EQUIPMENT: Yes
- BILGE PUMPS: Manual & automatic
- SAFETY EQUIPMENT: Yes
- NAVIGATION LIGHTS: Yes
- GUARDWIRES/PULPIT/PUSHPIT: Yes
- SPRAYHOOD/DODGERS: Yes
- COCKPIT BIMINI TOP: Yes
- RADIO/ CD: Yes

- TV with DVD: Yes
- DAVITS: No
- SWIMMING LADDER: Yes
- DINGHY: No
- OUTBOARD: No
- WARPS: (4) Yes
- FENDERS: (4) Yes
- BOATHOOK: (1) Yes
- CUTLERY / CROCKERY / UTENSILS: Yes

Sail Area

I : 48.58 ft J : 12.75 ft P : 45.83 ft E : 15.58 ft Working Sail Area : 248.00 sq ft

Description

- 1000 W vertical electric windlass with up / down control.
- GRP cockpit table
- Stereo radio / CD / MP3 player with two speakers in the saloon and two waterproof speakers in the cockpit.
- Folding, pivoting saloon table.
- Deluxe gimballed 2-burner hob with oven/grill.
- 12 V refrigerating unit in top-opening icebox
- Perspex shower screen in aft head compartment.
- Mirror on forward bulkhead in forecabin.
- 25 A battery charger.
- 1 supplementary 140 A service battery.
- Raymarine brand electronics
- Port cockpit: ST60+ Tridata Log, speedo, depth sounder.
- ST60+ wind vane, anemometer.
- Aft face of cockpit table: C80 multifunction 8.4 colour screen (GPS, plotter, chart reader for Navionics Gold Cartography)
- Pivoting holder for electronic screen.
- Starboard cockpit: ST6002 automatic pilot LSRV2 - controller for autopilot.
- Smartcontroller autopilot remote control.
- RAY 54E VHF.
- Asymmetric spinnaker gear.
- Grey coachroof sprayhood and cockpit bimini.
- Hot / cold water cockpit shower..
- Windex wind vane.

- Full ground tackle.

Cockpit

- 4 cockpit stowage lockers:
 - 1 locker to port.
 - 1 locker to starboard.
 - 1 locker under starboard helm seat.
 - 1 wet locker between helm seats.
 - 1 gas locker for 2 bottles located under port helm seat.
- Teak slatted cockpit benches.
- Twin steering consoles with stainless steel handrail, capable of taking navigation instruments (instruments available as an option).
- 1 column-mounted compass at each helm position.
- Engine control panel located near the starboard helm seat.
- GRP cockpit table, with 2 folding leaves, oddments locker, bottle rack or pivoting support (option) to take chart reader (option), stainless steel handrail, 12 V socket and lamp with shade.
- 2 winch handle pockets.
- GRP self-draining cockpit sole.

Wood Finish

- Fruit-tree stained woodwork.
- Parquet look laminated soles.
- Fabric lining to hull in saloon and cabins.

Electrical

Electrical panel:

- Electrical panel with 10 x 12 V switches + 11 fused switches.
- 1 x 12 V cigarette lighter socket.
- 1 x 12 V voltmeter.
- 1 water gauge and 1 fuel gauge via central LCD screen.
- 1 low battery alarm, and low diesel and water tanks alarm.

Supply:

- 1 x 140 Amp service battery located beneath aft starboard cabin.
- 1 x 110 Amp engine battery located beneath the sole at the foot of the companionway.

Battery charging:

- 1 x 80 Amp alternator coupled to the engine.
- 1 power distributor.

Lighting and sockets:

- 6 reading lights.
- 1 white / red striplight at the chart table.
- 1 white striplight in the galley.
- Bow and stern navigation lights.
- Engine light (steaming light).
- 1 masthead anchor light/navigation light.
- 1 deck light.

Galley

- Rectangular stainless steel double sink.
- Mixer tap with hot and cold pressurised water.
- Stainless steel gimballed 2-burner hob and oven with stainless steel safety rail.
- Top-opening 170 L icebox with 12 V refrigerating unit.
- White laminated worktop.
- Stowage:1 locker with double doors under sink with wastebin.
- 1 cutlery drawer.
- 1 locker with 2 shelves under the drawer.
- 4 high closed stowage shelves.
- 1 shelf with stainless steel fiddle.
- Lighting:2 halogen deckhead lights.
- 1 light over hob.
- Openings:2 hull ports (1 port / 1 starboard) with curtains.
- 1 double panoramic window with pleated blinds.
- 1 large side window to port with 2 opening deck ports (300 x 120) in coaming and blinds.
- 1 large side window to starboard with 1 opening deck port (300 x 120) in coaming and blind.
- 1 opening deck hatch (442 x 442) with blind / mosquito screen.

Engine

- Yanmar 40 HP engine with drive shaft transmission.
- Engine mounting built into hull inner moulding.
- Engine compartment insulated with soundproofing foam.
- Ventilation secured by an air intake and forced air exhaust on transom.
- Engine access through an opening located under companionway steps supported by two

gas struts.

- 2 side access hatches in the aft cabins for maintenance.
- Stainless steel drive shaft with moulded GRP protection in the hull.
- Fixed three-blade propeller.
- 200-litre rotomoulded fuel tank with electronic gauge located under aft port berth.
- Sea water and diesel filter with sediment reservoir.
- Engine control panel with built-in key start located in the cockpit to starboard near the helm seat.

Hull

- The hull is of single-skinned GRP construction.
- Local areas of reinforcement (keel, rudder, chainplates, hull / deck joint) serve to strengthen the structure.
- A single-skinned structural inner moulding is bonded and laminated to the hull. Its structural role is important as it takes and absorbs the stresses at pressure points (chainplate tie rods, keel, rudder, etc.) ensuring their distribution and so guaranteeing reduced strain on the hull.
- The surface of the inner moulding makes cleaning easier and provides a better finish.

Deck

- The deck is of glass fibre and balsa sandwich construction for optimum strength / weight ratio as well as excellent heat and sound insulation.
- All working areas and areas of movement around the deck are provided with a non-slip "diamond point" finish.

Keel

- The keel is fitted to the boat by a system of screws and stainless steel backing plates and by bonding.
- The keel is cast-iron.
- To increase its life, the keel is given an anti-corrosion treatment and improved finish in the factory before assembly, using epoxy-based coatings and paint.

Manufacturer Provided Description

A new generation of cruising yachts. The Océanis 40 is an unequivocal invitation to delight in her design, comfort and performance. The interior architecture and design are by Nauta Design. This great Italian name, a benchmark in the super yacht world, has helped the Oceanis 40 achieve her true personality - one of contemporary lines where luminosity, comfort and wellbeing take

precedence on board.

Exclusions

Owner's personal belongings.

Disclaimer

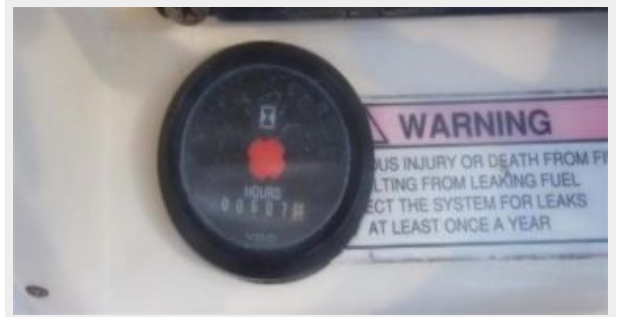
The Company offers the details of this vessel or yacht in good faith but cannot guarantee or warrant the accuracy of this information nor warrant the condition of the vessel. A buyer should instruct his representatives, agents, or his surveyors, to investigate such details as the buyer desires validated. This vessel or yacht is offered subject to prior sale, price change, or withdrawal without notice.

PHOTOS







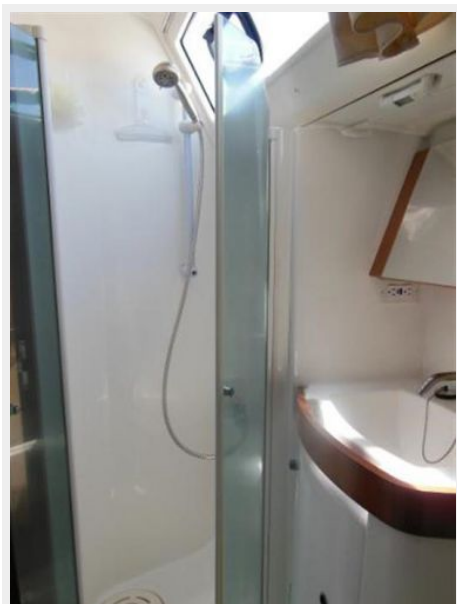


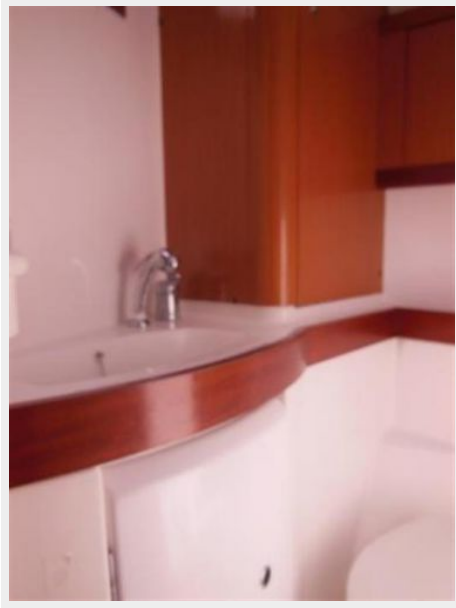


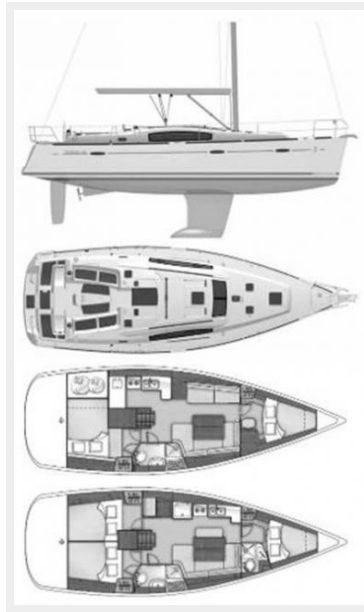












CONTACTS

Andrey Shestakov, leading yacht broker of the sales department of Shestakov Yacht Sales Inc. Shestakov Yacht Sales Inc., the official representative of the Miami/Fort Lauderdale FL headquarters.

Contact details

Email: andrey@shestakovyachtsales.com

Web: shestakovyachtsales.com/en/

Telephones

USA: +1(954)274-4435

Office hours

Monday – Saturday: **9:00 - 21:00** EDT

Sunday: **closed**

Address



Harbour Towne Marina, 850 NE 3rd St,
STE 213, Dania, FL 33004