

VERNA BREEZE — GULFSTAR



Builder: GULFSTAR

Year Built: 1988

Model: Cruising Sailboat

Price: PRICE ON APPLICATION

Location: United States

LOA: 54' 0" (16.46m)

Beam: 15' 9" (4.80m)

Max Draft: 14' 11" (4.55m)

Our experienced yacht broker, Andrey Shestakov, will help you choose and buy a yacht that best suits your needs **Verna Breeze — GULFSTAR** from our catalogue. Presently, at Shestakov Yacht Sales Inc., we have a wide variety of yachts available on our sale's list. We also work in close contact with all the big yacht manufacturers from all over the world.

If you would like to buy a yacht **Verna Breeze — GULFSTAR** or would like help answering any questions concerning purchasing, selling or chartering a yacht, please call **+1(954)274-4435**

TABLE OF CONTENTS

TABLE OF CONTENTS	2
SPECIFICATIONS	3
Overview	3
Basic Information	9
Dimensions	9
Speed, Capacities and Weight	9
Accommodations	9
Hull and Deck Information	9
Engine Information	10
PHOTOS	11
CONTACTS	24
Contact details	24
Telephones	24
Office hours	24
Address	24

SPECIFICATIONS

Overview

This gorgeous Gulfstar 54 Sailcruiser is designed for those interested in a vessel with luxurious interior appointments and spacious accommodations. She can easily and safely be handled by one couple for extended passages or weekend cruising. With two cockpits, the center cockpit and helm is fully enclosable with a fixed, fiberglass hardtop and a full vinyl enclosure. The separate aft cockpit has direct private access to the owner's stateroom, and provides an added area for boarding from the water, whether fishing, swimming or diving. The interior is huge, with accommodations to rival many 60 footers. The hull form provides superb sea handling characteristics under sail or power. Twin turbocharged diesels give optimum motoring or motorsailing performance and greatly improves safety and reliability-a Vetus Bow Thruster enhances docking maneuverability

"Verna Breeze" is an impressive, well maintained example of this popular yacht. High quality construction combined with a luxurious and spacious interior affords an ideal liveaboard cruising yacht. "Verna Breeze" features roller-furling headstay, electric in-mast furling, electric primary winches, electric dinghy davits, bow thruster, twin Yanmar diesels, cockpit hard top, large holding plate refrigerator/freezers, KVH TracVision satellite, etc. She has been priced to sell now by motivated owners.

Reasonable offers are encouraged! Easy viewing in Fort Lauderdale by appointment.

Boat Name "Verna Breeze" **Specs** Builder: Gulfstar Yachts Designer: R.C. Lazzarra Flag of Registry: United States Keel: Fin Hull Shape: Monohull **Dimensions** LOA: 54 ft 0 in Beam: 15 ft 9 in LWL: 43 ft 11 in Maximum Draft: 4 ft 11 in Displacement: 50000 lbs Ballast: 13000 lbs Bridge Clearance: 59 ft 0 in Headroom: 7 ft 0 in **Engines** Engine 1: Engine Brand: Yanmar Engine Model: 4JH HTE Engine Type: Inboard Engine/Fuel Type: Diesel Location: Starboard Propeller: 3 blade propeller Drive Type: Direct Drive Engine Power: 66 HP Engine 2: Engine Brand: Yanmar Engine Model: 4JH HTE Engine Type: Inboard Engine/Fuel Type: Diesel Location: Port Propeller: 3 blade propeller Drive Type: Direct Drive Engine Power: 66 HP **Tanks** Fresh Water Tanks: Fiberglass (267 Gallons) Fuel Tanks: Fiberglass (360 Gallons) Holding Tanks: Plastic (40 Gallons) **Accommodations** Number of heads: 2 **Outside Equipment/Extras** Total Liferaft Capacity: 6 Electric windlass

Vessel Specifications

Interior Description

"Verna Breeze" sleeps 6 persons in three separate cabins excluding the main salon.

Starting forward, there is a large VIP cabin with a centerline queen-size berth, and an ensuite head and separate shower stall. The mid-ship guest cabin is to starboard, with large over/under berths. The main salon, with two overhead hatches and nine large fixed windows w/ custom blinds has wrap-around leather seating and dining table to starboard. The bar and entertainment area are opposite with an icemaker and two barrel chairs w/storage within. The full size navigation station is on the port side of the companionway. The galley is on the starboard side of the walk-through to the master cabin. The master cabin features a centerline queen-size bed and ensuite head and large separate shower stall.

The interior of Verna Breeze is a full 7ft of headroom, and is truly luxurious and in pristine condition. The fit and finish is first class, with varnished teak and holly cabin soles and LED lighting throughout. The master cabin, aft, features a second companionway that leads out onto the aft cockpit. If you are looking for a comfortable, long range cruising vessel and plan to spend extended time aboard, then this beautiful yacht will be your ideal dreamboat.

- **ENTERTAINMENT EQUIPMENT:**

- KVH TracVision G4 digital satellite system
- Hitachi 32" HDTV main salon
- 9" HDTV/VCR combination forward cabin
- Kenwood 200W stereo
- (6) Pioneer stereo speakers main salon, aft cabin, cockpit

Galley

The Ariston Super Quiet washer/dryer has its own designated position beneath the linen closet in the forward walk-through by the main mast. The holding plate large refrigerator and freezer were designed for the serious cruising yachtsman.

- 3 burner Force 10 stove/oven
- Custom spice drawer, dish racks & canister racks
- Technicold holding plate upright refrigerator
- Technicold holding plate deep freezer
- U-Line icemaker
- Stainless steel sink and faucet
- Pressurized hot & cold water system
- Granite countertops

Deck Equipment

**Note: The draft on the 54 Sailcruiser is 4'11", which provides the option to cruise in areas such as the Bahamas where draft can be an issue. With her twin diesels, long fin keel with skegged rudder, "Verna Breeze" balances both the sailing and motoring worlds.

- (1) Bruce anchor w/chain & rode
- (1) CQR anchor w/chain & rode
- Twin bow anchor rollers
- Ideal vertical electric capstan windlass
- Marquipt boarding 6 step dock stairway
- Marquipt boarding vertical ladder
- Deck wash-down system
- Transom shower
- (5) Deck hatches
- (2) Companionway hatches
- Removable cockpit table
- Fiberglass hardtop w/full Isinglass enclosures over cockpit
- Cockpit Sunbrella cushions
- Helmsman seat
- Dickinson propane barbecue
- (4) custom storage boxes
- Switlick 6-man hard canister liferaft
- Custom electric dinghy davits
- Custom aluminum radararch (powder coated white)
- Lifesling overboard rescue system
- Horseshoe life buoy
- Aft deck floodlights
- Arch-mounted spotlight
- Class B EPIRB
- Numerous life jackets
- Numerous spare parts

Navigation Equipment and Electronics

**Note: Equipment also mounted at the Helm Station includes the Vetus 12-volt bow thruster controls and complete engine gauges. The equipment on Verna Breeze is impressive, however upgrading could be considered.

- **NAV STATION ELECTRONICS:**
- ICOM IC-M700 Pro SSB radio/fax modem
- Furuno LCD 24-mile radar
- Uniden VHF radio
- Datamarine Link 5000 multi-display (depth, speed & wind)

- **HELM STATION ELECTRONICS:**
- Robertson Simrad AP-20 autopilot
- Furuno color radar/ GPS plotter
- Standard Horizon VHF radio
- Datamarine depthsounder
- Datamarine speed indicator
- Datamarine wind speed/apparent wind
- Ritchie compass

Electrical Equipment

- 12 volt DC electrical system
- 110 volt AC electrical system
- Heart 3000 W inverter/ battery monitor
- Battery charger
- Kyocera 4180 W Solar panels
- 50 A Solar controller
- Northern Lights 9 kw diesel generator w/sound shield
- (4) 8-D AGM batteries
- (1) 4D AGM battery
- 4 LED underwater Lights
- 50 amp Hubbell 60' shore power cord

Sails and Rigging

- Sloop rig
- Aluminum double-spreader keel stepped mast
- Stainless steel wire standing rigging with suage terminals (5 yrs)
- Hood Seafurl roller reefing on headsail
- Hood in-mast electric reefing on mainsail
- (2) Barient #28 self-tailing electric 2-speed primary winches
- (1) Barient #21 self-tailing main sheet winch

- (1) Barent #17 self-tailing cockpit sheet winch

Mechanical Equipment

The engine room on the Gulfstar 54 Sailcruiser is both spacious and professionally laid out.

- Twin 66 HP Yanmar 4JH HTE diesel engines
- 3 blade Max Props
- Triple Racor 500 fuel filters w/ fuel pumps
- Reverso 12V oil change system
- (2) Rule 2000 Rule Electric bilge pumps w/float switches & override
- (1) Rule 500 Manual bilge pump
- Vetus bow thruster
- (3) Cruisair reverse-cycle 16,000 BTU air conditioning units w/ electronic controls
- (2) Jabsco electric heads
- Halon automatic engine room fire system
- Spectra 200C Watermaker
- 10 Gal water heater

Remarks

“Verna Breeze” is in spectacular condition and fully cruise-equipped. You need bring nothing but your food and clothing as she is ready to go. She has been attractively priced to expedite a swift sale. A serious buyer who appreciates a complete yacht in excellent condition will fully appreciate this Sailcruiser.-Serious offers are encouraged! She is easy to view in Ft. Lauderdale.

Recent Upgrades/Additions

Granite counter tops throughout

Stainless hatches replaced

Interior new varnish

Exterior varnish is perfect

New Ice maker

12V cooler in cockpit

LED Lighting

720 W Solar Power

9KW Gen 6 years old

New standing rigging 6 years ago

Epoxy bottom barrier 8 years ago

New washing machine 2 years ago

New leather Settee 2 years ago

Interior walls laminated with bamboo last year

Digital A/C controls

New main A/C

New mattresses 6 years ago

Bottom paint 1 year ago

New boarding ladder last year

Hydraulic steering rebuilt this year

New Windlass motor

12V Spectra water maker all rebuilt this year

New water pumps

New bilge pumps

New heat exchangers on both engines

Basic Information

Category: Cruising Sailboat

Model Year: 1988

Year Built: 1988

Country: United States

Cockpit: Yes

Dimensions

LOA: 54' 0" (16.46m)

LWL: 43' 11" (13.39m)

Beam: 15' 9" (4.80m)

Max Draft: 14' 11" (4.55m)

Speed, Capacities and Weight

Displacement: 50000 Pounds

Water Capacity: 267 Gallons

Holding Tank: 40 Gallons

Fuel Capacity: 360 Gallons

Accommodations

Total Cabins: 4

Total Heads: 2

Hull and Deck Information

Hull Material: Fiberglass

Hull Configuration: Monohull

Hull Finish: Fiberglass

Engine Information

Engines: 2

Manufacturer: Yanmar

Model: 4JH HTE

Engine Type: Inboard

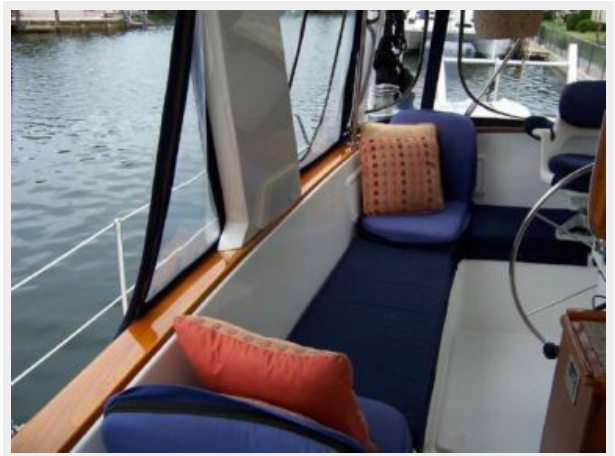
Fuel Type: Diesel

PHOTOS







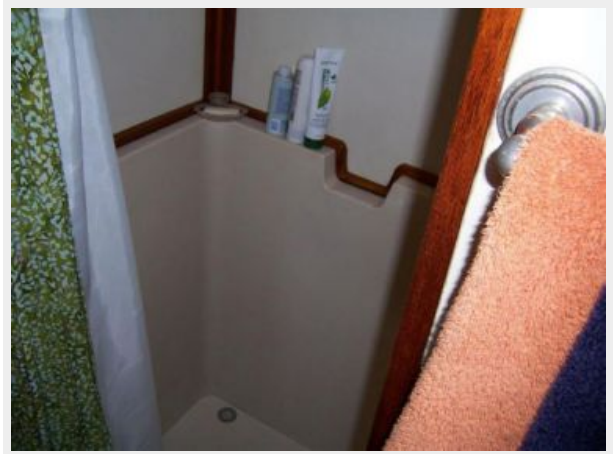


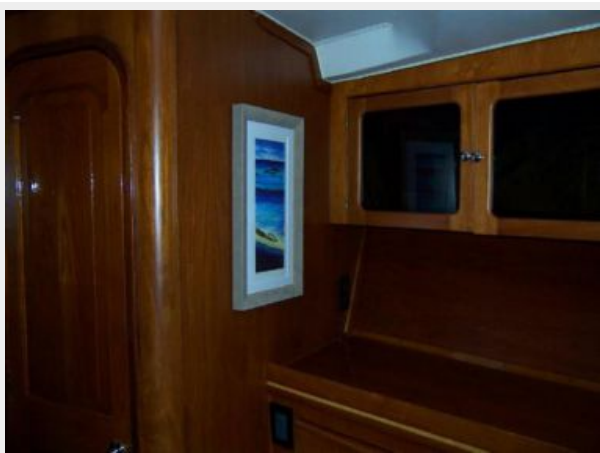


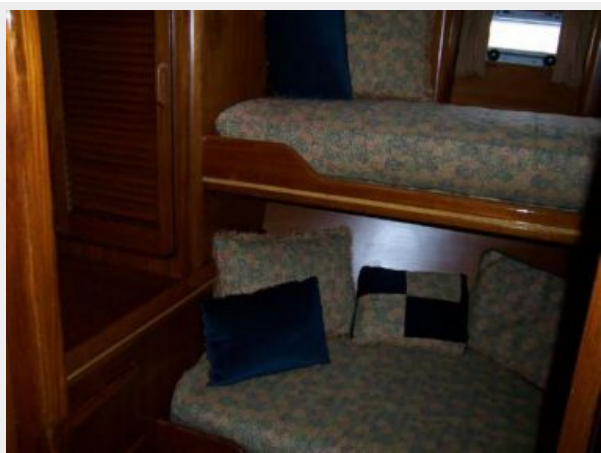
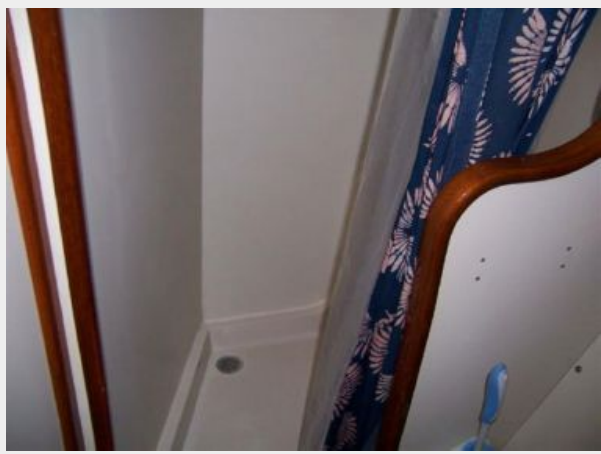


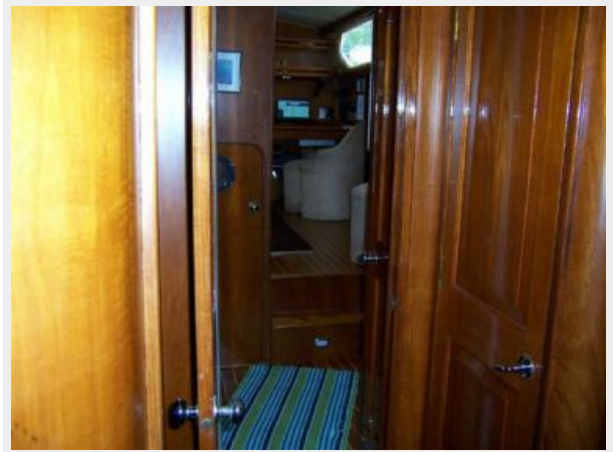


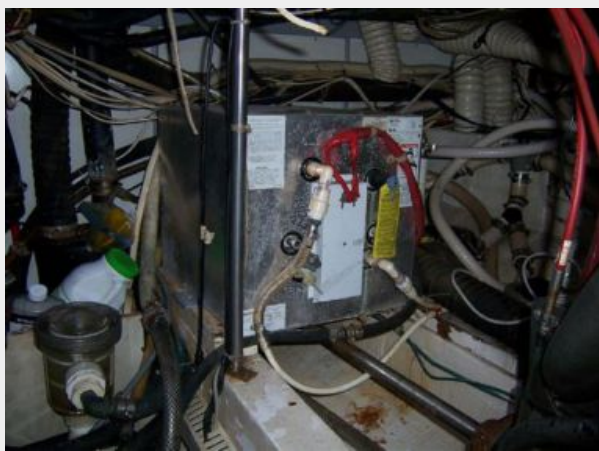












CONTACTS

Andrey Shestakov, leading yacht broker of the sales department of Shestakov Yacht Sales Inc. Shestakov Yacht Sales Inc., the official representative of the Miami/Fort Lauderdale FL headquarters.

Contact details

Email: andrey@shestakovyachtsales.com

Web: shestakovyachtsales.com/en/

Telephones

USA: +1(954)274-4435

Office hours

Monday – Saturday: **9:00 - 21:00** EDT

Sunday: **closed**

Address



Harbour Towne Marina, 850 NE 3rd St,
STE 213, Dania, FL 33004