

SMIDGEON — SOUTHERN CROSS



Builder: SOUTHERN CROSS

Year Built: 1977

Model: Cruising Sailboat

Price: PRICE ON APPLICATION

Location: United States

LOA: 31' 0" (9.45m)

Beam: 9' 6" (2.90m)

Max Draft: 4' 7" (1.40m)

Our experienced yacht broker, Andrey Shestakov, will help you choose and buy a yacht that best suits your needs **SMIDGEON — SOUTHERN CROSS** from our catalogue. Presently, at Shestakov Yacht Sales Inc., we have a wide variety of yachts available on our sale's list. We also work in close contact with all the big yacht manufacturers from all over the world.

If you would like to buy a yacht **SMIDGEON — SOUTHERN CROSS** or would like help answering any questions concerning purchasing, selling or chartering a yacht, please call **+1(954)274-4435**

TABLE OF CONTENTS

TABLE OF CONTENTS	2
SPECIFICATIONS	3
Overview	3
Basic Information	4
Dimensions	4
Speed, Capacities and Weight	4
Accommodations	4
Hull and Deck Information	5
Engine Information	5
PHOTOS	6
CONTACTS	12
Contact details	12
Telephones	12
Office hours	12
Address	12

SPECIFICATIONS

Overview

SMIDGEON is Hull # 34 of Southern Cross 31's. The Southern Cross 31 is an exceptional round the world cruising boat, designed by Thomas Gillmer and built by C. Ryder in Bristol, Rhode Island. The current owner of 18 years has cruised her extensively thru the Caribbean and equipped her to handle such seafaring adventures.

AIRES WIND VANE RAYTHEON ST2000 TILLER PILOT FIBERGLASS DODGER BIMINI w/150W SOLAR KISS WIND GENERATOR BALMAR ALTERNATOR ISOTHERM 12V FRIDGE GARMIN CHARTPLOTTER PROFURL JIB AND STAYSIL CRUISING CHUTE IN SOCK ALUMINUM BOMAR PORTS and HATCHES BOTTOM JOB (Ablative) in Fall 2014 Her hull is cored with Airex PVC foam and has internal lead ballast

Boat Name SMIDGEON Specs Keel: Full Engines Engine 1: Engine Brand: Yanmar Year Built: 1977 Engine Model: 3GM20 Engine Type: Inboard Engine/Fuel Type: Diesel Engine Hours: 2500 Drive Type: Direct Drive Engine Power: 20 HP

Dimensions

LOA: 31 feet LWL: 25 feet BEAM: 9 ft 6 in DRAFT: 4 ft 7 in DISPLACEMENT: 13,600 lbs BALLAST: 4,400 lbs

Tankage

WATER: 50 Gallons Fiberglass FUEL: 35 Gallons Fiberglass Inspection Ports

Galley

Sea Maid Propane Stove Isotherm 12V Fridge Single Stainless Steel Sink Galley Foot Pumps

Sails

Slab Reef Main (new 2008) Profurl Roller Furled Jib Profurl Roller Furled Staysil Cruising Cute in Sock New Rigging in 2000 Stay Locks Top and Bottom Insulated Back Stay (no SSB) Windex on Mast

Electrical

4 Trojan T105 6V Deep Cycle Batteries (2012) 150W Solar Panels Kiss Wind Generator 1000W Invertor Dedicated 12V Starting Battery Stereo w/AM/FM/CD w/Aux Input 110VAC and 12VDC Electrical Panel 110VAC Shore Power LED Running Lights LED Deck Light Three Cabin Fans Portable AC unit Garmin 441s Charplotter with Transducer Raytheon

ST2000 Tiller Pilot

Head

Lavac Head 10 Gallon Holding Tank Y Valve for overboard or holding Pump Out on Deck

Ground Tackle

35 LB CQR w/100 ft 5/16th Chain 100 ft 3/8 Rode Manual Anchor Windlass Dual Anchor Roller

Basic Information

Category: Cruising Sailboat

Model Year: 1977

Year Built: 1977

Country: United States

Dimensions

LOA: 31' 0" (9.45m)

LWL: 25' 0" (7.62m)

Beam: 9' 6" (2.90m)

Max Draft: 4' 7" (1.40m)

Speed, Capacities and Weight

Displacement: 13600 Pounds

Water Capacity: 50 Gallons

Holding Tank: 10 Gallons

Fuel Capacity: 35 Gallons

Accommodations

Total Cabins: 1

Total Heads: 1

Hull and Deck Information

Hull Material: Fiberglass

Hull Finish: Fiberglass

Engine Information

Engines: 1

Manufacturer: Yanmar

Model: 3GM20

Engine Type: Inboard

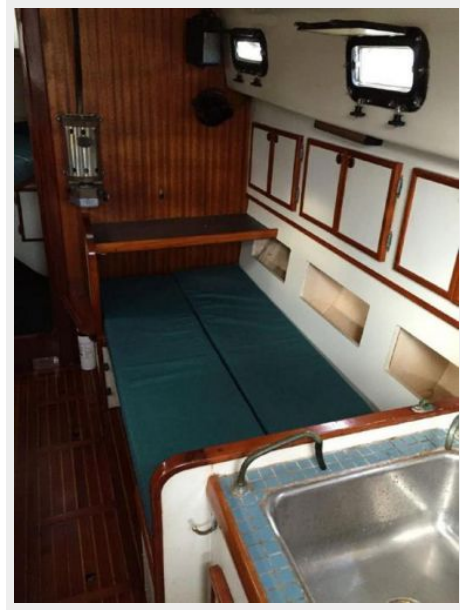
Fuel Type: Diesel

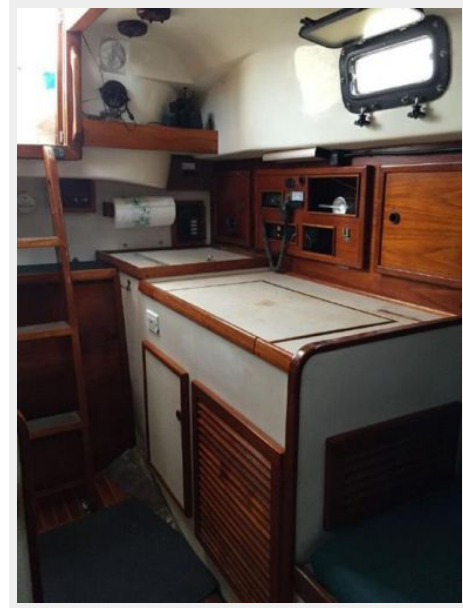
PHOTOS

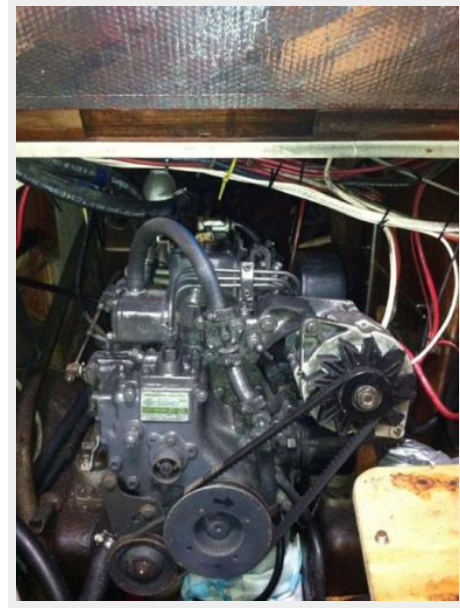












CONTACTS

Andrey Shestakov, leading yacht broker of the sales department of Shestakov Yacht Sales Inc. Shestakov Yacht Sales Inc., the official representative of the Miami/Fort Lauderdale FL headquarters.

Contact details

Email: andrey@shestakovyachtsales.com

Web: shestakovyachtsales.com/en/

Telephones

USA: +1(954)274-4435

Office hours

Monday – Saturday: **9:00 - 21:00** EDT

Sunday: **closed**

Address



Harbour Towne Marina, 850 NE 3rd St,
STE 213, Dania, FL 33004