

VIKING YACHTS — VIKING



Builder: [VIKING](#)

Year Built: 2006

Model: Sport Fisherman

Price: PRICE ON APPLICATION

Location: United States

LOA: 56' 0" (17.07m)

Beam: 18' 2" (5.54m)

Max Draft: 5' 0" (1.52m)

Cruise Speed: 33 Kts. (38 MPH)

Max Speed: 39 Kts. (45 MPH)

Our experienced yacht broker, Andrey Shestakov, will help you choose and buy a yacht that best suits your needs **Viking Yachts — VIKING** from our catalogue. Presently, at Shestakov Yacht Sales Inc., we have a wide variety of yachts available on our sale's list. We also work in close contact with all the big yacht manufacturers from all over the world.

If you would like to buy a yacht **Viking Yachts — VIKING** or would like help answering any questions concerning purchasing, selling or chartering a yacht, please call **+1(954)274-4435**

TABLE OF CONTENTS

TABLE OF CONTENTS	2
SPECIFICATIONS	5
Overview	5
Basic Information	5
Dimensions	5
Speed, Capacities and Weight	5
Accommodations	5
Hull and Deck Information	5
Engine Information	6
DETAILED INFORMATION	7
Accommodations	7
Salon	7
Galley and Dinette	7
Master Stateroom	8
Master Stateroom Head	8
Forward VIP Stateroom	9
Guest Head	9
Companionway	9
Starboard Stateroom	10
Deck, Exterior and Cockpit	10
Flybridge	11
Electronics	11
Engine Room, Mechanical and Electrical	12
Fishing Equipment	13
Highlights	13
Comments	13
Disclaimer	14
Exclusions	14

Disclaimer	14
PHOTOS	15
At the Dock	15
56' Viking Victory Lap	15
Stern Teak Transom	15
Teak Helm Pod	15
Port Radio Box	15
Outboard Electronics Box	15
Stbd Radio Box	16
Bridge Console	16
Teaser Reels	16
Murray Helm Chairs	16
Flybridge Refrigerator	16
Engine Room Aft Port	16
Engine Room Center	17
Engine Room Tool Box	17
Engine Room Aft	17
Engine Room 2	17
Engine Room Forward Port	17
Engine Room Forward Stbd	17
Watermaker Panel	18
Tool Box	18
Onan 21.5 KW Generator	18
Cockpit Livewell	18
Lazarette	18
Cockpit Ice Storage Box	18
Mezzanine	19
Salon	19
Salon Settee	19

Dinette	19
Galley	19
Starboard Stateroom	19
Starboard Stateroom 2	20
Master Stateroom	20
Master Stateroom Hanging Lockers	20
Forward VIP Stateroom	20
Forward Stateroom Lower Berth	20
Forward Stateroom Upper Berth	20
Under Console Storage	21
Master Head	21
Washer and Dryer	21
CONTACTS	22
Contact details	22
Telephones	22
Office hours	22
Address	22

SPECIFICATIONS

Overview

This 2 owner Viking boasts all the accouterments available for the ultimate sport fishing boat. She was built for a multiple Viking owner who knew just what he wanted in a sport fish and has been maintained and improved with an open checkbook by the current owner. This is a must see for anyone looking for a very well maintained and equipped sport fish!

Basic Information

Category: Sport Fisherman

Sub Category: Convertible

Model Year: 2006

Year Built: 2006

Country: United States

Coast Guard #: 1174936

Dimensions

LOA: 56' 0" (17.07m)

Beam: 18' 2" (5.54m)

Max Draft: 5' 0" (1.52m)

Speed, Capacities and Weight

Cruise Speed: 33 Kts. (38 MPH)

Max Speed: 39 Kts. (45 MPH)

Water Capacity: 240 Gallons

Fuel Capacity: 1700 Gallons

Accommodations

Total Cabins: 3

Total Heads: 2

Hull and Deck Information

Hull Material: Fiberglass

Engine Information

Engines: 2

Manufacturer: MAN

Model: 1550CRM

Engine Type: Inboard

Fuel Type: Diesel

DETAILED INFORMATION

Accommodations

Victory Lap features the popular Viking 3 stateroom, 2 head layout and Premier Edition decor with many custom touches and teak accents. The master stateroom boasts an athwart-ship queen berth and en-suite head and shower. The forward VIP stateroom layout offers accommodations for a couple with or without a child or functions as an upper lower for 2 guys on a fishing trip. The starboard stateroom aft features crossover bunks and great storage. The forward and starboard staterooms both have private access to the starboard head which also functions as the day head via a companionway door.

Salon

Entering the salon from the cockpit area, the Amtico teak flooring protects the carpeting from the elements. The electrical panel is at your right hand and eye level for convenient switching from Generator to shore power and vice versa. The salon settee to port is an upgraded style with storage arm, storage under cushions, and ultra leather fabric.

- Electric salon door
- Salon carpet runner with full protective cover
- Custom Amtico flooring at salon entrance - Teak only
- Criuseair A/C with reverse cycle heat and SMX controls
- Overhead low voltage lighting with dimmers
- Electrical panel to starboard of entry
- Sony 42" TV over dinette
- Bose Lifestyle 35 stereo system upgrade
- Bose surround speakers
- Curtain boards to be teak framed with fabric inserts
- Teak curtain board aft by entry door over sofa
- Teak trim on covering boards in front of blinds

- Inside of stereo cabinet to be black
- Aft side of galley island to be teak
- Protective covering for all seating
- Kenmore clear ice ice maker in std cabinet
- Install teak trim where carpet edges meet flooring
- Storage area behind TV to be carpeted
- Teak valances with A/C vents behind

Galley and Dinette

- Granite counter tops
- Single bowl stainless undercounter sink with disposal and Grohe faucet
- Kitchen Aid four burner flush mount stove
- Install teak faces on all upper galley roll out drawers
- Dinette has wrap around seating with storage under
- Teak dinette pedestal with teak base
- Granite dinette table top
- Galley forward back splash to be mirrored with granite bottom border
- Two cabinets and four drawers under sink and stove
- 24V lights in upper galley cabinets with magnetic switches on doors
- Spice rack cabinet on port side

Master Stateroom

- VCR/DVD unit
- Recessed speakers with volume control
- Dedicated Cruisair A/C with reverse cycle heat and SMX controls
- Low voltage overhead lighting with dimmers
- Upgraded queen mattress
- Bed lifts on gas shocks to access storage under
- Teak nightstands with individually switched lights on each side of bed
- Private access to master head
- Hanging lockers have varnished teak doors and cedar lining
- Port wall to have beveled mirrors behind custom headboard
- Full carpeting with protective entry runner

Master Stateroom Head

The master head is private to the master stateroom and features glass shower door, and granite counter.

- Head Hunter head system
- Full shower stall with Grohe fixtures
- Vanity with granite top, undermount sink and Grohe faucet
- A/C vent
- Exhaust fan
- Amtico Teak flooring
- Upper vanity storage cabinet with mirrored doors and mirrored surround
- Linen locker
- Low voltage overhead lighting
- Mirrored ceiling

Forward VIP Stateroom

The forward stateroom is the Viking VIP layout with a double bed down to starboard and a single bunk up to port for maximum flexibility. There is private access to the guest head.

- VIP layout with additional varnished teak cabinets above starboard
- Flat panel Sharp TV
- VCR/DVD combo unit
- Stereo speakers with volume control
- Varnished forward bulkhead ipo mirror
- Varnished shelf above lower bunk
- Install cabinets above lower bunk
- Air conditioning with discharge above valance on port side of stateroom
- Lower bunk widened and lengthened over standard
- Cedar lined hanging lockers

Guest Head

The starboard guest head services the forward and starboard guest staterooms through private access doors from each. Additionally, there is a third door from the companionway for day head use.

- Head Hunter head system
- Frameless glass shower door
- Amtico teak flooring
- A/C vent
- Exhaust fan
- Fiberglass shower stall with Grohe fixtures
- Vanity with teak face, Granite top, and Grohe fixtures
- Upper vanity storage cabinet with mirrored doors and surround
- Mirrored ceiling
- Overhead low voltage lighting
- Washer and dryer in closet in head

Companionway

- Wrapped hatch carpet installation
- Companionway runner and step covers
- Tekwall upholstered panels in companionway
- Teak vertical strips between panels
- Carpeted equipment/storage area behind TV with 3 DirecTV receivers
- Central Vac system

- Brass LED lights in steps
- Overhead low voltage lighting
- Forward bilges are Awlgrip
- Bilge lights with magnetic switches on hatches
- Subpoena on port side has Moritz monitoring system and remote water maker controls

Starboard Stateroom

- Crossover upper lower bunks
- Storage under lower bunk
- Cedar lined hanging locker
- 15" flat panel TV
- Stereo speakers with volume control
- Overhead low voltage lighting
- Teak valances with air-conditioning vent behind
- Lower bunk mattress to be system 1 upgrade
- Upper bunk orthopedic mattress upgrade

Deck, Exterior and Cockpit

- Custom Hull color "Uptick" green
- Custom metallic boot stripe with accent stripe
- Rub rail painted to match hull color

- Teak transom
- Transom door
- Transom coaming solid with no gate
- Release bottles rod holders
- All hull vents are fiberglass
- Faired in side scupper bullets
- Oval exhaust outlets
- Underwater lights
- Recessed trim tab covers
- Bow thruster
- Delete bow pulpit and install bow cleats fore and aft
- Windlass with stainless steel bow chock
- Awl gripped bowdeck anchor locker with fresh water outlet
- Delete port and starboard deck hatches
- Palm Beach Tuna tower
- Pipewelders outriggers and center rigger
- Mezzanine seating
- Teak cockpit, mezzanine sole and steps

- Refrigerated step box
- Cockpit freezer in mezzanine
- Custom starboard tackle drawers in cockpit cabinet
- Livewell in cockpit sole
- In deck fishbox
- In deck box with plumbing for crushed ice
- Awlgrippped lazarette
- Y valve for fresh and salt water wash down on starboard side
- Oil change line runs to starboard dockside box
- 50 amp Glendenning cable master with white cord on port side
- Additional 50 amp connector on starboard side
- (2) 12V outlets under coaming: 1 each on port and starboard
- Starboard side fill for fresh water
- Flangeless track for cockpit covers
- Canvas cockpit shades full and partial
- Full cockpit cover
- Brow cover over windshiel

Flybridge

- Teak Helm pod
- Gauges in helm pod with stainless steel trim ring
- Single lever controls with thruster control in handles
- Trolling valves
- Rexroth controls
- Push knob catches on electronics boxes
- NO exposed fasteners
- Drip dry foam for flybridge cushions
- Reversible backrest on flybridge jump seat
- Fresh water outlet on flybridge
- 4 stereo speakers on flybridge
- Install 2 12V outlets in radio box
- 4 stereo speakers on flybridge awlgrippped white
- Refrigerated (or freezer) box with dividers
- Recessed electric teaser reels US 9
- Inside of console and under brow were awl gripped
- 6 rod rocket launchers

Electronics

Flybridge

- Moritz/Viking alarm system
- Furuno 64 mile radar
- 2 Furuno NavNet Vx2 units and LCD monitors: GPS chart plotter, fish finder, CCTV, radar
- Furuno NavNet 3D unit (2011)
- Furuno FCV1200 video sounder
- Garmin 7215 GPS plotter w/ Garmin wi-fi (2010)
- Furuno RD 30
- Furuno FAP 511 autopilot
- KVH G4 satellite TV system
- XM radio and weather receivers
- 2 ICOM 602 vhf radios
- KVH Sat phone (not activated)
- Backup engine/clutch controls
- Two audio power amps
- 3 Elbex engine room cameras
- Clarion CMV-! marine stereo

Tower

- Garmin 1040XS (2014)
- Furuno RD 30

Engine Room, Mechanical and Electrical

- MAN 1550 CRM diesels with 1300 hours
- Onan 21.5 KW generator with 1670 hours
- Generator gas/water separator
- Storage shelf over generator
- Racor fuel filters for engines and generator
- 24V fuel prime pumps
- Fuel transfer system with back up
- Oil change system
- Dual power steering pumps
- Delta T engine room vents
- 2 stainless steel circulating fans
- Sea Recovery 600 GPD watermaker
- Eskimo ice machine
- Head Hunter fresh water pump
- Domestic water system with water heater
- Water shut off manifolds
- Larger upgraded air-conditioning pump
- Dual 50 Amp shore power cords, one with Glendenning cablemaster
- Voltage stabilizer transformers

- (2) dry out bilge pumps
- Awl grip thru hulls and strainers
- Battery chargers
- Install shelf over generator
- Tool box installed on inboard side of ice machine
- Engine room stereo speakers with volume control

Fishing Equipment

- Palm Beach tower
- Murray Rocket Launcher - cockpit
- Release fighting chair with rocket launcher and drawer
- Pipewelders outriggers
- Release Marine boltless rod holders
- Overhead recessed teaser reels US 9
- Custom starboard tackle drawers
- Cockpit freezer in mezzanine seating
- Livewell in cockpit sole
- 2 12V outlets under gunnels

Highlights

- Custom teak transom
- Teak cockpit
- Mezzanine cockpit
- Custom Hull color - Uptick Green
- Black mask
- Palm Beach Towers full tuna tower
- Extra fuel (200 G) for a total of 1700
- Updated electronics
- Watermaker
- Eskimo Icemaker
- New bow thruster with controls in handles
- Full sized Release Chair with Rocket launcher
- Teak rocket launcher and pedestal
- Cockpit covers and brow (mask) cover
- MAN 1550 CRM engines with recent services

Comments

This is a must see for anyone interested in a top notch Viking Sportfish maintained to perfection!

Do not miss out on this one!

Disclaimer

While we attempt to display current and accurate data, this listing may not reflect the most recent transactions or may contain occasional data entry errors. Selling agent makes no warranties, express or implied, regarding the content or availability of the products described herein. All inventory listed is subject to availability and prior sale. Please consult selling agent for details. Prices are quoted for the USA only and may not include transportation, taxes, or other applicable charges. Photographs may be representative only and may vary somewhat from the actual items offered for sale. We will not be responsible for inaccurate data obtained from our site. Please check with your local dealer to ensure that you have the latest information available. Information on this web site could include technical inaccuracies or typographical errors. Changes may be periodically made to the information or the products herein. Questions or comments regarding these policies may be directed to website hosting agent.

Exclusions

Owner's personal belongings.

Disclaimer

The Company offers the details of this vessel or yacht in good faith but cannot guarantee or warrant the accuracy of this information nor warrant the condition of the vessel. A buyer should instruct his representatives, agents, or his surveyors, to investigate such details as the buyer desires validated. This vessel or yacht is offered subject to prior sale, price change, or withdrawal without notice.

PHOTOS

56' Viking Victory Lap



At the Dock



Stern Teak Transom



Teak Helm Pod



Port Radio Box



Outboard Electronics Box



Stbd Radio Box



Bridge Console



Teaser Reels



Murray Helm Chairs



Flybridge Refrigerator



Engine Room Aft Port



Engine Room Center



Engine Room Tool Box



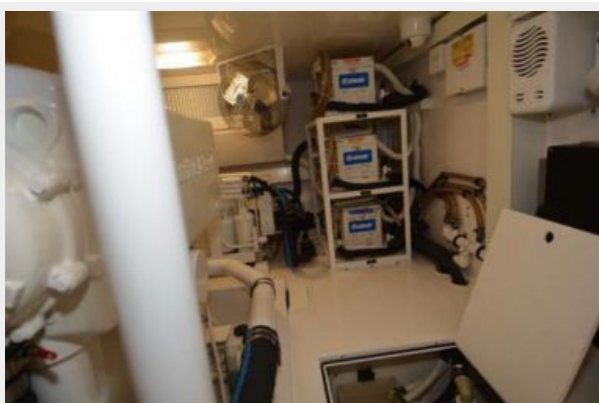
Engine Room Aft



Engine Room 2



Engine Room Forward Port



Engine Room Forward Stbd



Watermaker Panel



Tool Box



Onan 21.5 KW Generator



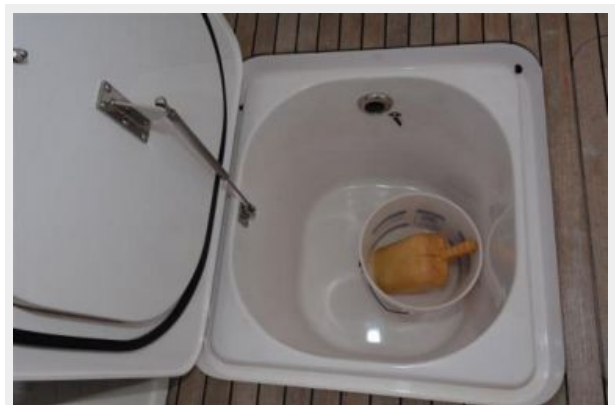
Cockpit Livewell



Lazarette



Cockpit Ice Storage Box



Mezzanine



Salon



Salon Settee



Dinette



Galley



Starboard Stateroom



Starboard Stateroom 2



Master Stateroom



Master Stateroom Hanging Lockers



Forward VIP Stateroom



Forward Stateroom Lower Berth



Forward Stateroom Upper Berth



Under Console Storage



Master Head



Washer and Dryer



CONTACTS

Andrey Shestakov, leading yacht broker of the sales department of Shestakov Yacht Sales Inc. Shestakov Yacht Sales Inc., the official representative of the Miami/Fort Lauderdale FL headquarters.

Contact details

Email: andrey@shestakovyachtsales.com

Web: shestakovyachtsales.com/en/

Telephones

USA: +1(954)274-4435

Office hours

Monday – Saturday: **9:00 - 21:00** EDT

Sunday: **closed**

Address



Harbour Towne Marina, 850 NE 3rd St,
STE 213, Dania, FL 33004