

## AZZURO DUE — SUNSEEKER



**Builder:** SUNSEEKER

**Year Built:** 2009

**Model:** Motor Yacht

**Price:** PRICE ON APPLICATION

**Location:** France

**LOA:** 91' 10" (27.99m)

**Beam:** 20' 8" (6.30m)

**Min Draft:** 6' 7" (2.01m)

**Max Draft:** 6' 7" (2.01m)

**Cruise Speed:** 22 Kts. (25 MPH)

**Max Speed:** 30 Kts. (35 MPH)

Our experienced yacht broker, Andrey Shestakov, will help you choose and buy a yacht that best suits your needs **AZZURO DUE — SUNSEEKER** from our catalogue. Presently, at Shestakov Yacht Sales Inc., we have a wide variety of yachts available on our sale's list. We also work in close contact with all the big yacht manufacturers from all over the world.

If you would like to buy a yacht **AZZURO DUE — SUNSEEKER** or would like help answering any questions concerning purchasing, selling or chartering a yacht, please call **+1(954)274-4435**

# TABLE OF CONTENTS

TABLE OF CONTENTS	2
SPECIFICATIONS	4
Overview	4
Basic Information	4
Dimensions	4
Speed, Capacities and Weight	4
Accommodations	5
Hull and Deck Information	5
Engine Information	5
PHOTOS	6
Starboard Profile	6
Layout	6
Aft Platform	6
Aft Cockpit	6
Aft Cockpit	6
Side Decks	6
Side Decks	7
Flybridge	7
Flybridge	7
Flybridge	7
Flybridge Helm	7
Foredeck	7
Saloon	8
Saloon	8
Saloon	8
Master Stateroom	8
Ensuite	8
VIP Stateroom	8

---

Guest Stateroom	9
Guest Stateroom	9
Galley	9
Galley	9
Utility Area	9
Crew Cabin	9
Engine Room	10
<b>CONTACTS</b>	<b>11</b>
Contact details	11
Telephones	11
Office hours	11
Address	11

---

# SPECIFICATIONS

---

## Overview

---

The very popular 90 Yacht is designed around a high performance hull which has unrivalled sea keeping qualities, and yet offers a large internal volume for accommodation for 8 guests and 5 crew. "AZZURO DUE" is equipped with a very comprehensive specification including TRAC Fin Stabilisers, Seamless (Electrical) Transfer, 2 x 27KW Kohler generators and a 'custom' stainless steel full length bimini top with integrated lights. She has a very sociable deck layout and, between the flybridge and aft hydraulic platform, this yacht can accommodate a large tender and 2 x jetskis (with crane on flybridge). Presented in A1 condition "AZZURO DUE" has been expertly maintained by a full time crew for an uncompromising Swiss owner. A beautiful Yacht, ready to go for the season.

## Basic Information

---

**Category:** Motor Yacht

**Model Year:** 2009

**Year Built:** 2009

**Country:** France

## Dimensions

---

**LOA:** 91' 10" (27.99m)

**Beam:** 20' 8" (6.30m)

**Min Draft:** 6' 7" (2.01m)

**Max Draft:** 6' 7" (2.01m)

## Speed, Capacities and Weight

---

**Cruise Speed:** 22 Kts. (25 MPH)

**Max Speed:** 30 Kts. (35 MPH)

**Displacement:** 156528.20602 Pounds

**Water Capacity:** 396.258078 Gallons

**Fuel Capacity:** 2562.4689044 Gallons

---

## Accommodations

---

**Total Cabins:** 4

**Total Berths:** 8

**Sleeps:** 8

**Crew Cabin:** 5

**Crew Berths:** 5

**Crew Sleeps:** 5

---

## Hull and Deck Information

---

**Hull Material:** Fiberglass

---

## Engine Information

---

**Engines:** 2

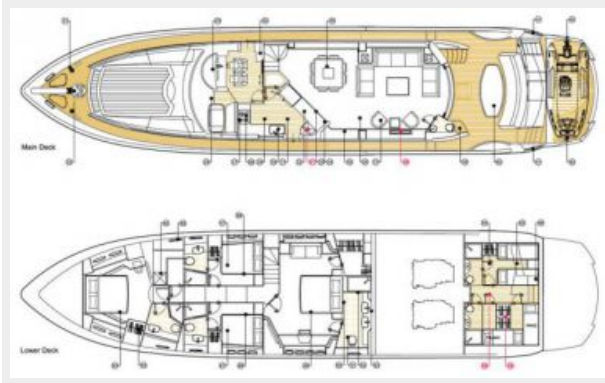
**Manufacturer:** Caterpillar

**Model:** C32 ACERT

**Fuel Type:** Diesel

# PHOTOS

### Layout



### Starboard Profile



### Aft Platform



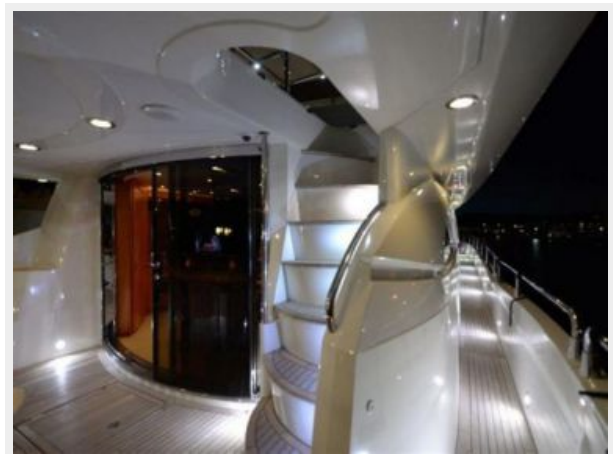
### Aft Cockpit



### Aft Cockpit



### Side Decks



**Side Decks**



**Flybridge**



**Flybridge**



**Flybridge**



**Flybridge Helm**



**Foredeck**



**Saloon**



**Saloon**



**Saloon**



**Master Stateroom**



**Ensuite**



**VIP Stateroom**





**Guest Stateroom**



**Guest Stateroom**



**Galley**



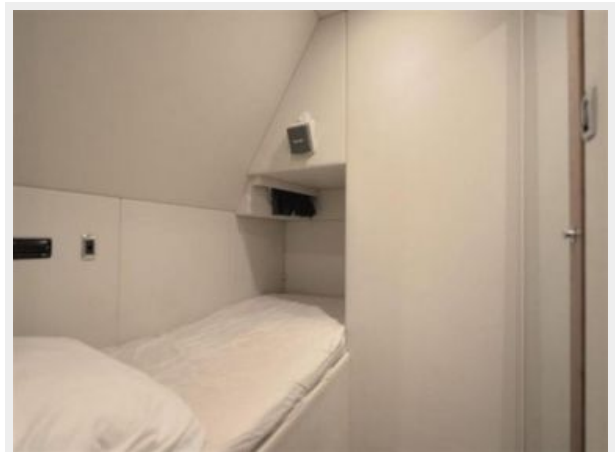
**Galley**



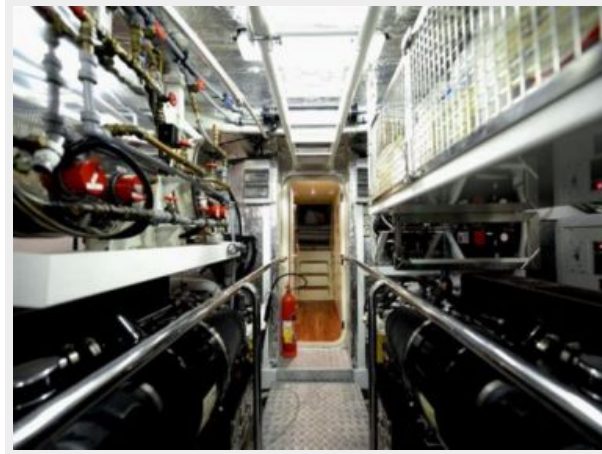
**Utility Area**



**Crew Cabin**



## Engine Room



# CONTACTS

---

Andrey Shestakov, leading yacht broker of the sales department of Shestakov Yacht Sales Inc. Shestakov Yacht Sales Inc., the official representative of the Miami/Fort Lauderdale FL headquarters.

## Contact details

---

Email: [andrey@shestakovyachtsales.com](mailto:andrey@shestakovyachtsales.com)

Web: [shestakovyachtsales.com/en/](http://shestakovyachtsales.com/en/)

## Telephones

---

USA: +1(954)274-4435

## Office hours

---

Monday – Saturday: **9:00 - 21:00** EDT

Sunday: **closed**

## Address

---



Harbour Towne Marina, 850 NE 3rd St,  
STE 213, Dania, FL 33004