

MELLO YELLO — CABO



Builder: CABO

LOA: 35' 0" (10.67m)

Year Built: 2004

Beam: 13' 0" (3.96m)

Model: Sport Fisherman

Price: PRICE ON APPLICATION

Location: United States

Our experienced yacht broker, Andrey Shestakov, will help you choose and buy a yacht that best suits your needs **Mello Yello — CABO** from our catalogue. Presently, at Shestakov Yacht Sales Inc., we have a wide variety of yachts available on our sale's list. We also work in close contact with all the big yacht manufacturers from all over the world.

If you would like to buy a yacht **Mello Yello — CABO** or would like help answering any questions concerning purchasing, selling or chartering a yacht, please call **+1(954)274-4435**

TABLE OF CONTENTS

TABLE OF CONTENTS	2
SPECIFICATIONS	4
Overview	4
Basic Information	4
Dimensions	4
Speed, Capacities and Weight	4
Accommodations	4
Hull and Deck Information	5
Engine Information	5
DETAILED INFORMATION	6
Accommodations	6
Electrical	6
Mechanical	6
Salon	7
Galley	7
Master Stateroom	8
Crews Quarters	8
Head	8
Bridge	8
Electronics	9
Deck	9
Additional	10
Exclusions	10
Disclaimer	10
PHOTOS	11
CONTACTS	24
Contact details	24
Telephones	24

Office hours	24
Address	24

SPECIFICATIONS

Overview

NEW 2014 C-7 CATS W/ WARRANTY

The Cabo 35 is a popular flybridge fisherman with an abundance of built-in quality and amenities that will appeal the the entire crew. Built on a modified-V hullwith a relatively wide beam, the 35 offers a soft dry ride. The interior is spacious and offer a galley up arrnagement, two staterooms and a enclosed head complete wih a seperate enclosed stand-up shower. Additional features include in-deck fish boxes, transom livewell, Tower and more. Call today for complete specs and details.

Basic Information

Category: Sport Fisherman

Sub Category: Convertible

Model Year: 2004

Year Built: 2004

Country: United States

Dimensions

LOA: 35' 0" (10.67m)

Beam: 13' 0" (3.96m)

Speed, Capacities and Weight

Displacement: 21000 Pounds

Water Capacity: 100 Gallons

Holding Tank: 15 Gallons

Fuel Capacity: 400 Gallons

Accommodations

Total Cabins: 2

Hull and Deck Information

Hull Material: Fiberglass

Engine Information

Engines: 2

Manufacturer: Caterpillar

Model: C-7

Engine Type: Inboard

Fuel Type: Diesel

DETAILED INFORMATION

Accommodations

- Port Side L-Shape Seating w/ Storage Underneath in Salon
- Starboard Side Dinette w/ U-Shape Seating
- Galley
- Port Side Crews Quarters w/ Over / Under Bunks
- Starboard Side Enclosed Head
- Forward Master Stateroom w/ Island Queen Bed

Electrical

- 5 KW Westerbeke Generator
- (2) 30 Amp Shore Power
- 30 Amp Shore Power Cord
- (5) Batteries
- Battery Selector Switches
- Battery Parallel Switch
- Phase III 30 amp Battery Charger model # P 70a
- (2) Cockpit Spreader Lights
- (2) Molded In Spreader Lights on Bridge Deck Hard Top
- Engine Block Heaters

Mechanical

- 2014 C-7 460hp Caterpillar Diesel Engines (200 hours)
- Engine Room Fire Extinguishing System
- (3) Bilge Pumps
- Water Tank Monitoring Gauge
- Engine Room Exhaust Fans
- Oil Changing System (engines and generator)
- Reverse Cycle Heating and Air Conditioning
- 11 Gallon Stainless Water Heater
- Marine Head w/ 15 Gallon Holding Tank
- Racor Fuel Filters
- Dripless Shaft Seals
- AC / DC Lighting

- Glendinning Single Lever Engine Controls

- Glendinning engine synchronizers

- Hydraulic Steering
- Nibral propellers, (4-blade)
- Bennett Trim Tabs
- Y-Valve Emergency HD Bilge Pump

Salon

- Teak & Holly Sole
- Custom Blinds Throughout
- Recessed Lighting
- Starboard U Shaped Settee w Storage Underneath
- Custom Teak Dinette Table w/ Protective Cover
- Port L-shaped Seating w/ storage Underneath

ENTERTAINMENT CENTER

- Panasonic CD/DVD Stereo System
- Sole Flat Screen TV
- KVH Satellite TV
- Clarion AM / FM Stereo w/ CD player
- Sirius Satellite Radio

Galley

- Solid Surface Counter Tops
- Under Counter Custom Sink
- Hot and Cold Water at Sink
- Kenyon 2 Burner Electric Stove Top
- Refrigerator
- Panasonic Dimension 4 Microwave
- Storage Drawers below Counter Top
- Storage Cabinets Above and Below Counter Top
- Teak and Holly Flooring

Master Stateroom

- Master Stateroom is Forward
- Teak & Holly Sole
- Island Queen Berth
- Built-in Flat Screen TV
- CD/DVD Entertainment System
- Recessed Lighting
- Hanging Locker (cedar lined)
- (2) Storage Lockers
- Storage Below Bed
- Air-conditioning and Heat

Crews Quarters

- Over / Under Single Bunks
- Storage Under Lower Bunk
- (3 Storage Drawers
- Recessed Lighting

Head

- Solid Surface Counter Tops
- Separate Stall Shower w/ Seat
- Storage Above and Below Counter
- Vacu-Flush Fresh water Toilet w/ 15 Gallon Holding tank
- Exhaust Fan

Bridge

- Tournament Style Bridge
- Four Sided Bridge Enclosure (New in April 2015)

- Large Console
- Custom Instrument Panel
- Electronic Engine Controls
- Stainless Helm Wheel
- Pompanette Helm Chairs
- Bench Seat Forward of Console w/Storage Underneath
- Storage Drawers at Helm
- Ice Maker
- Helm Cover
- (2) Molded in Spreader Lights
- (2) Molded In Teaser Reels in Overhead

Electronics

- (2) Garmin 7612 Touch Screen GPS / Plotter / Sounder / XM Weather **(NEW August 2015)**
- Garmin 4kw 48 Mile Radar **(NEW August 2015)**
- Simrad AP22 Autopilot
- Ritchie Compass
- Icom M-506 VHF Radio **(NEW August 2015)**
- Icom M-502 VHF Radio
- Fusion MSUD650 AM / FM / CD Stereo System w/ 6 Speakers **(NEW August 2015)**
- ACR Remote Spotlight

Deck

- Tower w/ Full Controls
- Bench Seating in Tower
- Fiberglass Hard Top
- Fiberglass Hard Top on Tower
- Electronic engine Controls at Both Stations
- Full Bridge Deck Enclosure
- Double Spreader Outriggers
- Center Rigger
- (4) Spreader Lights
- Anchor Pulpit
- Anchor Windlass
- Anchor Windlass Foot Pedals on Foredeck
- Cockpit Courtest Lighting
- Engine Box Seating w/ Cushions
- Starboard Cockpit Ice / Fish Box w/ Chill Plate
- Port Cockpit 4 Drawer Storage / Tackle Storage
- (2) In-Deck Fish Box w/ Macerator Pumps

- Port In-Deck Fish Box has Chill Plate
- Pompanette Fighting Chair
- Fighting Chair Footrest
- 4 Rod Rocket Launcher on Fighting Chair
- (5) Rod Holders in Gunnel
- Coaming Pads
- Transom Livewell
- Transom Door
- Corner Haise Pipes
- Spring Line Cleats
- Under Gunnel Lockable Rod / Gaff storage Lockers
- Bow Rail
- (2) 3 Rod Rocket Launcher on Tower Legs
- 5 Rod Rocket Launcher on Bridge Belly Band
- (2) Stereo Speakers
- Under Side Hard Top Painted to Match Hull Sides
- Trim Tabs
- Raw Water Wash Down
- Fresh Water System

Additional

- **Engine Warranty purchased in April 2015 (60 Month Caterpillar Platinum)**
- **New Bridge Enclosure April 2015**
- **Bottom Paint April 2015**
- **Oil, Oil Filters & Fuel Filters Changed Both Engines and Generator**
- **New Electronics Package w/ 2 Garmin 7612 Touch Screen August 2015**

Exclusions

Owner's personal belongings.

Disclaimer

The Company offers the details of this vessel or yacht in good faith but cannot guarantee or warrant the accuracy of this information nor warrant the condition of the vessel. A buyer should instruct his representatives, agents, or his surveyors, to investigate such details as the buyer desires validated. This vessel or yacht is offered subject to prior sale, price change, or withdrawal without notice.

PHOTOS





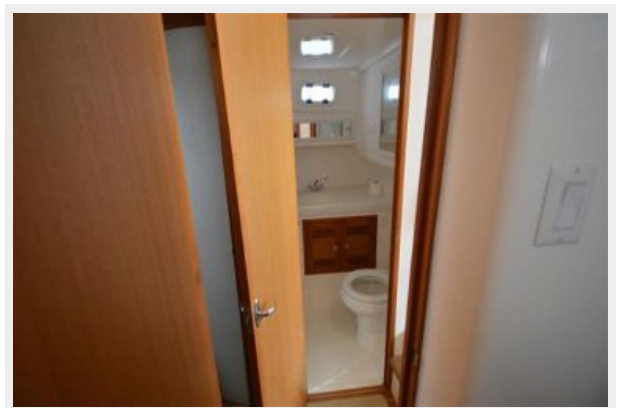
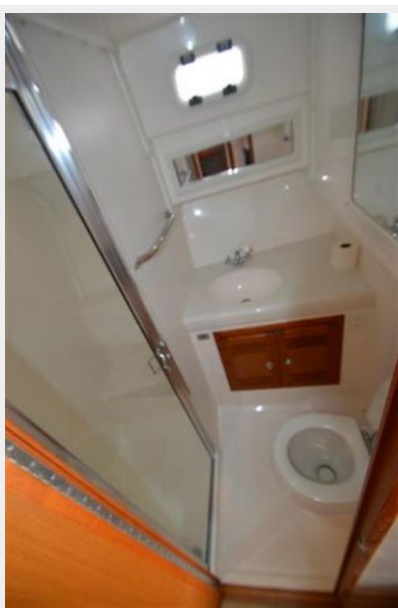




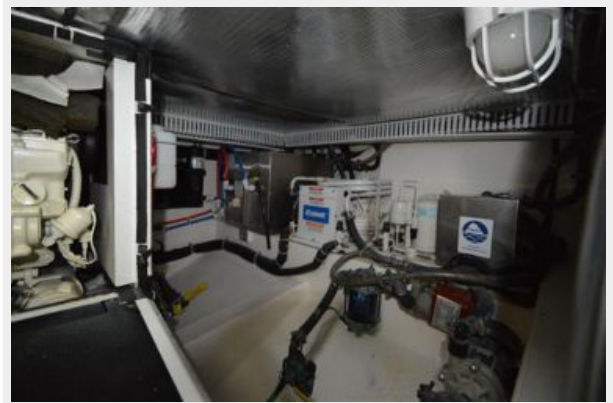


















CONTACTS

Andrey Shestakov, leading yacht broker of the sales department of Shestakov Yacht Sales Inc. Shestakov Yacht Sales Inc., the official representative of the Miami/Fort Lauderdale FL headquarters.

Contact details

Email: andrey@shestakovyachtsales.com

Web: shestakovyachtsales.com/en/

Telephones

USA: +1(954)274-4435

Office hours

Monday – Saturday: **9:00 - 21:00** EDT

Sunday: **closed**

Address



Harbour Towne Marina, 850 NE 3rd St,
STE 213, Dania, FL 33004