

NENE' — CANTIERE NAUTICO



Builder: CANTIERE NAUTICO

Year Built: 2007

Model: Cruiser

Price: PRICE ON APPLICATION

Location: Italy

LOA: 35' 6" (10.80m)

Beam: 14' 6" (4.40m)

Min Draft: 3' 0" (0.90m)

Cruise Speed: 25 Kts. (29 MPH)

Max Speed: 33 Kts. (38 MPH)

Our experienced yacht broker, Andrey Shestakov, will help you choose and buy a yacht that best suits your needs **NENE' — CANTIERE NAUTICO** from our catalogue. Presently, at Shestakov Yacht Sales Inc., we have a wide variety of yachts available on our sale's list. We also work in close contact with all the big yacht manufacturers from all over the world.

If you would like to buy a yacht **NENE' — CANTIERE NAUTICO** or would like help answering any questions concerning purchasing, selling or chartering a yacht, please call **+1(954)274-4435**

TABLE OF CONTENTS

TABLE OF CONTENTS	2
SPECIFICATIONS	3
Overview	3
Basic Information	3
Dimensions	3
Speed, Capacities and Weight	3
Accommodations	3
Hull and Deck Information	4
Engine Information	4
DETAILED INFORMATION	5
Deck Equipment	5
Exclusions	5
Disclaimer	5
PHOTOS	6
CONTACTS	14
Contact details	14
Telephones	14
Office hours	14
Address	14

SPECIFICATIONS

Overview

VERY NICE CONDITION -

Basic Information

Category: Cruiser

Sub Category: Cabin Cruiser

Model Year: 2008

Year Built: 2007

Country: Italy

Vessel Top: Bimini Top

Dimensions

LOA: 35' 6" (10.80m)

Beam: 14' 6" (4.40m)

Min Draft: 3' 0" (0.90m)

Speed, Capacities and Weight

Cruise Speed: 25 Kts. (29 MPH)

Max Speed: 33 Kts. (38 MPH)

Water Capacity: 105.6688208 Gallons

Holding Tank: 15.85032312 Gallons

Fuel Capacity: 158.5032312 Gallons

Accommodations

Total Cabins: 2

Sleeps: 5

Total Heads: 1

Hull and Deck Information

Hull Material: Fiberglass

Deck Material: Teak over Fiberglass

Hull Configuration: Monohull

Hull Color: BLUE

Hull Finish: Inox

Engine Information

Manufacturer: VM

Model: 6L

Engine Type: Inboard

Fuel Type: Diesel

DETAILED INFORMATION

Deck Equipment

• Depthsounder • Log-Speedometer • TV Set • Plotter • Autopilot • Radio • Compass • CD Player • GPS • Cockpit Speakers • VHF • Steering Wheel • Bow Thruster • Electric Bilge Pump • Manual Bilge Pump • Air Conditioning • Electric Head • Heating • Hot Water • Refrigerator • Fresh Water Maker • Deep Freezer • Battery Charger • Shore Power Inlet • Teak Cockpit • Cockpit Shower • Teak Sidedecks • Hydraulic Gangway • Radar Reflector • Cockpit Cushions • Cockpit Table • Swimming Ladder • Cockpit Cover

Exclusions

Owner's personal belongings.

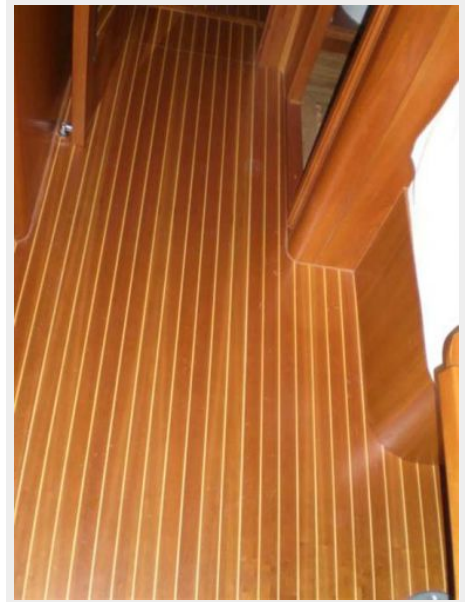
Disclaimer

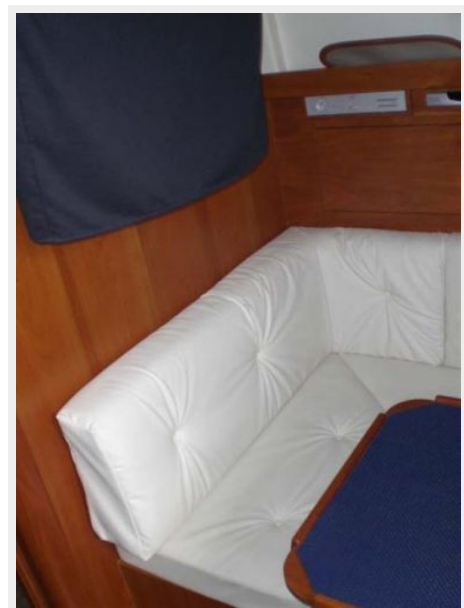
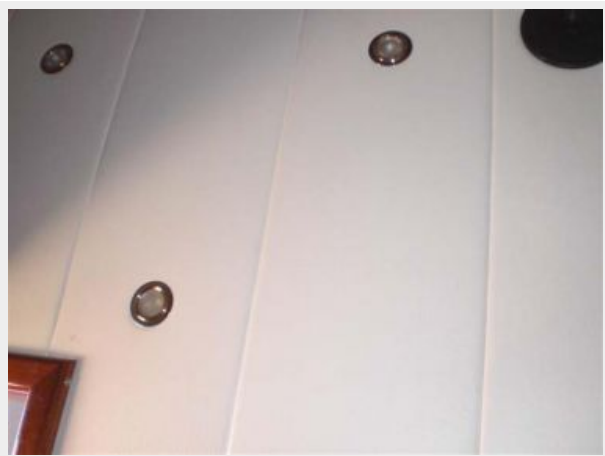
The Company offers the details of this vessel or yacht in good faith but cannot guarantee or warrant the accuracy of this information nor warrant the condition of the vessel. A buyer should instruct his representatives, agents, or his surveyors, to investigate such details as the buyer desires validated. This vessel or yacht is offered subject to prior sale, price change, or withdrawal without notice.

PHOTOS

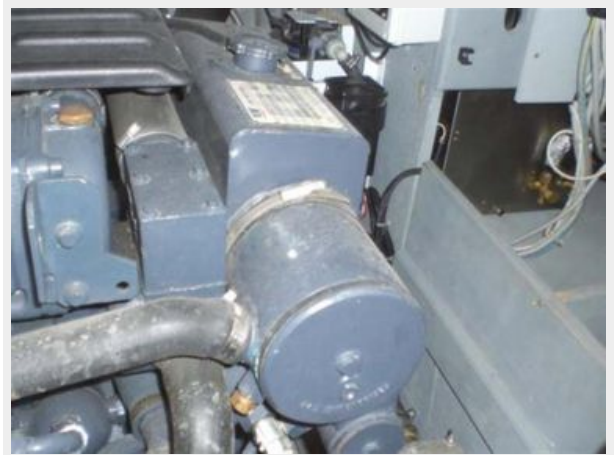


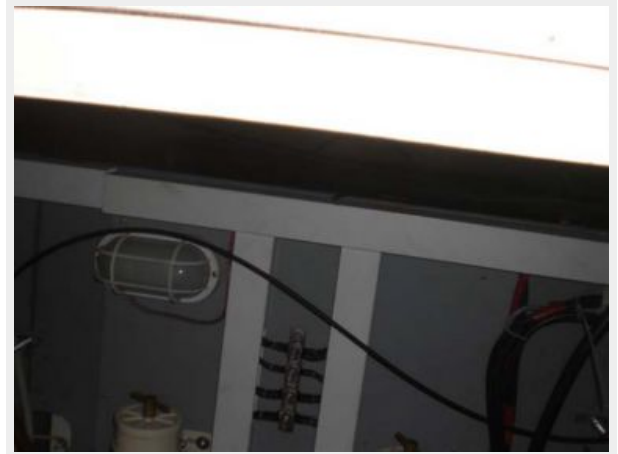














CONTACTS

Andrey Shestakov, leading yacht broker of the sales department of Shestakov Yacht Sales Inc. Shestakov Yacht Sales Inc., the official representative of the Miami/Fort Lauderdale FL headquarters.

Contact details

Email: andrey@shestakovyachtsales.com

Web: shestakovyachtsales.com/en/

Telephones

USA: +1(954)274-4435

Office hours

Monday – Saturday: **9:00 - 21:00** EDT

Sunday: **closed**

Address



Harbour Towne Marina, 850 NE 3rd St,
STE 213, Dania, FL 33004