

MS. T — CARVER



Builder: CARVER

Year Built: 2000

Model: Motor Yacht

Price: PRICE ON APPLICATION

Location: United States

LOA: 45' 0" (13.72m)

Beam: 14' 11" (4.55m)

Min Draft: 3' 7" (1.09m)

Our experienced yacht broker, Andrey Shestakov, will help you choose and buy a yacht that best suits your needs **Ms. T — CARVER** from our catalogue. Presently, at Shestakov Yacht Sales Inc., we have a wide variety of yachts available on our sale's list. We also work in close contact with all the big yacht manufacturers from all over the world.

If you would like to buy a yacht **Ms. T — CARVER** or would like help answering any questions concerning purchasing, selling or chartering a yacht, please call **+1(954)274-4435**

TABLE OF CONTENTS

TABLE OF CONTENTS	2
SPECIFICATIONS	5
Overview	5
Basic Information	5
Dimensions	5
Speed, Capacities and Weight	5
Accommodations	6
Hull and Deck Information	6
Engine Information	6
DETAILED INFORMATION	7
Salon	7
Galley	7
Companionway	7
Lower Helm Station	8
VIP Stateroom Forward	8
Guest Head	9
Master Stateroom Starboard	9
Master Head	9
Electrical	10
Mechanical	10
Deck	10
Aft Deck	11
Fly Bridge	11
Exclusions	12
Exclusions	12
Disclaimer	12
PHOTOS	13
Salon	13

Salon	13
Salon	13
Salon	13
Salon	13
Salon	13
Salon	14
Salon	14
Salon	14
Galley	14
Lower Helm	14
Lower Helm	14
Companionway	15
Lower Helm	15
Master Stateroom	15
Master Stateroom	15
Master Stateroom	16
Master Head	16
VIP Head	16
VIP Stateroom	16
VIP Head	17
Aft Deck	17
Aft Deck	17
Flybridge	17
Flybridge	18
Flybridge	18
Flybridge	18
Flybridge	18
Safety Rails	18
Aft Deck	18

Aft Deck	19
Dinghy	19
Aft Deck	19
Fordeck shore power starboard side	19
Windlass	19
Engine Room	19
Engine Room	20
Engine Room	20
Engine Room	20
Profile	20
Profile	20
CONTACTS	21
Contact details	21
Telephones	21
Office hours	21
Address	21

SPECIFICATIONS

Overview

Walking in from the aft deck you find a L-shaped sofa on the port side and additional seating across on the starboard side. The salon includes a wet bar with liquor storage, entertainment system, huge storage, carpet, custom décor and folding dinette table. Proceeding forward you find the galley and lower helm station. The lower station has full electronics, Captain seating and guest seating. Through the galley is a companionway that leads to the master stateroom to starboard with ensuite head and the VIP stateroom forward with easy access to the guest head.

Ms T has been maintained by a retired Marine Officer and service records are available. It is hard to imagine a boat that has had this much care. You really must preview Ms. T to understand her condition. You will not find a nicer 450 Carver on the market.

Basic Information

Category: Motor Yacht

Sub Category: Sedan Cruiser

Model Year: 2000

Year Built: 2000

Country: United States

Fly Bridge: Yes

Dimensions

LOA: 45' 0" (13.72m)

Beam: 14' 11" (4.55m)

Min Draft: 3' 7" (1.09m)

Speed, Capacities and Weight

Water Capacity: 150 Gallons

Fuel Capacity: 560 Gallons

Accommodations

Total Cabins: 2

Total Berths: 2

Sleeps: 4

Total Heads: 2

Hull and Deck Information

Hull Material: Fiberglass

Engine Information

Engines: 2

Manufacturer: Cummins

Engine Type: Inboard

Fuel Type: Diesel

DETAILED INFORMATION

Salon

- L-shaped seating to port
- Additional seating to starboard
- Folding dinette table
- Carpet
- Wet bar with sink and faucet
- Liquor storage
- Custom throw pillows
- Sliding screen door to aft deck
- Custom wood mini blinds
- Air conditioning
- Large windows
- Large amounts of storage
- Custom lamps
- SAT TV receiver
- Insignia flat screen TV
- Sony Blue Ray DVD (new 2014)
- Harmon Kardon five disc DVD changer
- Harmon Kardon AVR 40 stereo and receiver
- Bose stereo speakers
- Kenwood CD player for aft deck and flybridge

Galley

- Hardwood flooring
- Sharp microwave and convection oven
- Princess Ceran three burner glass cook top
- Deep well sink with gooseneck faucet
- Air conditioning
- Storage cabinets
- GE trash compactor
- Storage drawers
- Refrigerator/ freezer
- Black and Decker coffee maker

Companionway

- Safety hand rails

- Carpet
- Access to staterooms
- Custom décor shelves

Lower Helm Station

- Wireless spotlight with control (new 2013)
- Bow thruster control
- Captain chair
- Carpet
- Air conditioning
- Raymarine E-80
- GPS
- Radar
- Bottom machine
- Sirius weather available but not in service
- Horizon VHF
- Ray Marine digital depth
- Twin disc controls
- Engine gauges
- Horn
- Guest seating
- Custom throw pillows
- Raymarine auto pilot
- Plenty of helm space for additional electronics
- Rear view camera
- Engine room camera
- Side entry door to starboard side

VIP Stateroom Forward

- Queen berth
- Custom bedding
- Custom throw pillows
- Fore deck access hatch
- Hanging locker
- Air conditioning
- Accent lightning
- Carpet
- Vizio flat screen TV

Guest Head

- Corian counter top
- Vinyl flooring
- Head
- Shower
- Mirrored ceilings
- Medicine cabinet
- Sink with faucet
- Soap dish
- Storage cabinet
- Blower

Master Stateroom Starboard

- Custom towel package
- Queen berth
- Carpet
- Air conditioning
- Main electrical panel
- AIWA stereo and CD player
- Accent lighting
- Custom bedding
- Custom throw pillows
- Built in end tables
- Carbon monoxide detector
- Vizio flat screen TV
- Hanging locker
- Mirrored ceilings
- Wood mini blinds
- Drawers
- Large storage areas
- Fan

Master Head

- Corian counter
- Head
- Shower
- Mirrored ceilings
- Sink with faucet
- Built in soap dish

- Medicine cabinet
- Storage
- Vinyl flooring
- Exhaust
- Private access to master stateroom

Electrical

- Navigation lights
- Cable master shore power
- Spreader lights
- Kohler 13.5 kw (1868 hours)
- Accent lighting
- Batteries
- Extra shore power cords
- Electrical panel in master stateroom

Mechanical

- Twin 370 HP Cummins engines (1800 hours)
- Bilge pumps
- Automatic fire system
- Oil change system
- New ZF transmissions (10/14)
- Two air conditioners replaced (5/14)
- Hot water heater
- Fresh water pump
- Miscellaneous spare parts
- Service records

Deck

- Side safety rails
- Delta quick set anchor
- Maxwell windlass (new Dec 2014)
- Window sun screens
- Fore deck sun pad with cover
- 200 feet anchor chain with line
- FW wash down fore deck
- SW wash down fore deck
- Navigation lights

- Fiberglass deck with non skid
- Spare anchor in engine room
- Fender storage
- Fore deck shore power outlets
- Avon hard bottom dinghy with 9 HP Mercury engine with cover
- 600 lb davit
- Bottom Paint (October 2014)

Aft Deck

- Magna propane grill
- Sea Deck imitation teak (2014)
- Sea Deck imitation teak on swim platform
- Sea Deck imitation teak soft and cool on feet
- Access to engine room
- Access to flybridge
- Safety side rails to fore deck
- Access to salon
- 110 volt outlet
- Storage
- Two stereo speakers
- Boat hook

Fly Bridge

- Richie compass
- Auto pilot remote
- Flybridge storage cover
- Full enclosure
- Helm and companion seats
- Canvas new 2013
- E-120 display
- Radar
- Bottom machine
- GPS
- Guest seating with oval table
- Standard VHF
- Bow thruster controls
- Steering wheel
- 12 volt plug in
- Engine gauges
- Trim tab controls

-
- Engine controls
 - Compass
 - Two stereo speakers
 - Kenwood stereo and CD
 - Helm console cover
 - Raritan ice maker
 - Engine sync
 - Wet bar with sink and faucet
 - Drink holders
 - SAT TV KVH 4

Exclusions

Owners personal items

Exclusions

Owner's personal belongings.

Disclaimer

The Company offers the details of this vessel or yacht in good faith but cannot guarantee or warrant the accuracy of this information nor warrant the condition of the vessel. A buyer should instruct his representatives, agents, or his surveyors, to investigate such details as the buyer desires validated. This vessel or yacht is offered subject to prior sale, price change, or withdrawal without notice.

PHOTOS

Salon



Salon



Salon



Salon



Salon



Salon



Salon



Salon



Salon



Galley



Lower Helm



Lower Helm



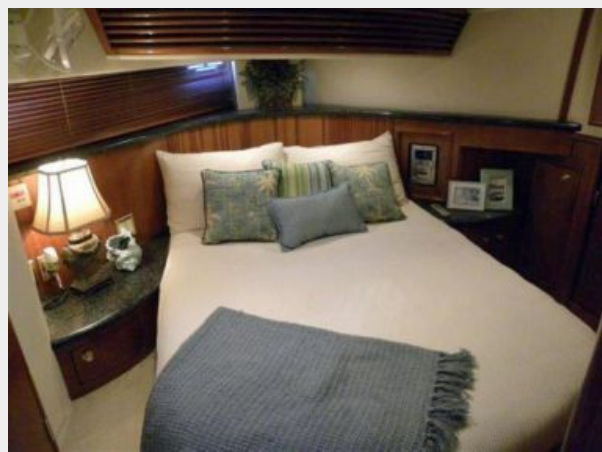
Lower Helm



Companionway



Master Stateroom



Master Stateroom



Master Stateroom



Master Head



VIP Head



VIP Stateroom



VIP Head



Aft Deck



Aft Deck



Flybridge



Flybridge



Flybridge



Flybridge



Flybridge



Safety Rails



Aft Deck



Aft Deck



Dinghy



Aft Deck



Fordeck shore power starboard side



Windlass



Engine Room



Engine Room



Engine Room



Engine Room



Profile



Profile



CONTACTS

Andrey Shestakov, leading yacht broker of the sales department of Shestakov Yacht Sales Inc. Shestakov Yacht Sales Inc., the official representative of the Miami/Fort Lauderdale FL headquarters.

Contact details

Email: andrey@shestakovyachtsales.com

Web: shestakovyachtsales.com/en/

Telephones

USA: +1(954)274-4435

Office hours

Monday – Saturday: **9:00 - 21:00** EDT

Sunday: **closed**

Address



Harbour Towne Marina, 850 NE 3rd St,
STE 213, Dania, FL 33004