

## WINDSCAPE — BRISTOL YACHTS



**Builder:** BRISTOL YACHTS

**Year Built:** 1984

**Model:** Cruising Sailboat

**Price:** PRICE ON APPLICATION

**Location:** Turkey

**LOA:** 41' 0" (12.50m)

**Beam:** 12' 11" (3.94m)

**Min Draft:** 4' 6" (1.37m)

**Max Draft:** 10' 0" (3.05m)

Our experienced yacht broker, Andrey Shestakov, will help you choose and buy a yacht that best suits your needs **Windscape — BRISTOL YACHTS** from our catalogue. Presently, at Shestakov Yacht Sales Inc., we have a wide variety of yachts available on our sale's list. We also work in close contact with all the big yacht manufacturers from all over the world.

If you would like to buy a yacht **Windscape — BRISTOL YACHTS** or would like help answering any questions concerning purchasing, selling or chartering a yacht, please call **+1(954)274-4435**

# TABLE OF CONTENTS

---

TABLE OF CONTENTS	2
SPECIFICATIONS	4
Overview	4
Basic Information	5
Dimensions	5
Speed, Capacities and Weight	5
Accommodations	5
Hull and Deck Information	5
Engine Information	5
DETAILED INFORMATION	6
Description	6
Accommodations	7
Galley	8
Sails & Rigging	8
Deck & Hull	9
Engine Room/Mechanical	10
Electronics & Navigation	10
Electrical System	11
Design and Construction Details	11
Exclusions	12
Disclaimer	12
PHOTOS	13
USCG documented vessel for sale in Marmaris, Turkey	13
At anchor in Greece	13
In the Azores	13
At anchor in Puerto Vallarta	13
Last haulout in Bodrim, Turkey (2013)	13
At anchor in Cape Cod	13

Hull configuration, center cockpit centerboard extended transom	14
Custom hi low table	14
Custom mirrored bulkhead	14
Salon looking aft	14
Navigation station to port of companionway	15
Leaded glass door panels	15
Great working galley and provisioning room	15
Galley in stbd passageway	15
Ensuite master head and shower	16
Generous storage	16
Guest stateroom	16
Guest head and shower	16
Dual access from salon and guest cabin	17
Layout diagram	17
Clean 52 hp Westerbeke engine	17
In mast furling main new 2010	17
Electric windlass and roller furling	18
Liferaft, dorades and handrails	18
New Selden mast and oversized rigging 2010	18
View from stern	18
The Island of Fimi, Greece (favorite anchorage!)	19
<b>CONTACTS</b>	<b>20</b>
Contact details	20
Telephones	20
Office hours	20
Address	20

---

# SPECIFICATIONS

---

## Overview

---

***Make your cruising dreams a reality in a world class yacht!***

***Windscape is an exceptional USCG documented vessel perfectly poised in Marmaris, Turkey to explore the Mediterranean and beyond!***

***Extremely versatile center cockpit centerboard/keel Ted Hood design. Windscape is one of two center cockpit 41.1 XT (extended transom) models built by Bristol and features two generously over sized lazarette lockers not found on other 41.1 models... a real bonus for liveaboard cruisers. She is identical to the 43.3 in exterior design with a vertical transom, this model was renamed a 43.3 in 1985. The only difference between the two models is in the aft master stateroom configuration... all other aspects remain the same. This design offers many unique features seldom found on a yacht of this size, including two private staterooms with ensuite heads and two large lazarette lockers.***

***Bristol is highly regarded as a solid, blue water cruiser/racer...easily single handled or by a couple. Her long fin keel with skeg hung rudder and centerboard down at 10' track well and handle heavy weather with ease. Her 4'6" draft is ideal for shallow anchorages and traversing canals.***

***This proven blue water yacht is well equipped for long term cruising including a 4 man Liferaft, Water maker, SSB, Radar, GPS, Autopilot, In mast main furling system (2010), Roller furler (2010), Oversized Standing rigging (2010) and running rigging (2010) and much more....***

***She will turn heads in every port with her classic sheer line, appealing awlgripped jade mist green hull and highly varnished teak cap rails, toe rail and exterior trim.***

***Her interior appointments and spacious accommodations are hard to beat! She has been lovingly maintained by long time owners and upgraded with many custom features to make her luxurious and practical.***

***As the exclusive US brokerage, you can be assured of a smooth transaction as all funds and documentation will be handled in the US. All resources are in place for showings and surveys.***

***For the past 23 years, "Windscape" has given her current owners a safe, seaworthy and comfortable vessel in which they have cruised extensively. They have enjoyable memories and stories they will be sharing forever. This is your opportunity to do the same....***

***She is worthy of your strong consideration!***

---

## Basic Information

---

**Category:** Cruising Sailboat

**Sub Category:** Sloop

**Model Year:** 1984

**Year Built:** 1984

**Country:** Turkey

---

## Dimensions

---

**LOA:** 41' 0" (12.50m)

**LWL:** 33' 4" (10.16m)

**Beam:** 12' 11" (3.94m)

**Min Draft:** 4' 6" (1.37m)

**Max Draft:** 10' 0" (3.05m)

**Clearance:** 59' 6" (18.14m)

---

## Speed, Capacities and Weight

---

**Displacement:** 26530 Pounds

**Water Capacity:** 100 Gallons

**Holding Tank:** 30 Gallons

**Fuel Capacity:** 100 Gallons

---

## Accommodations

---

**Total Cabins:** 2

**Total Heads:** 2

---

## Hull and Deck Information

---

**Hull Material:** Fiberglass

**Hull Configuration:** Centerboard

---

## Engine Information

---

**Engines:** 1

**Manufacturer:** Westerbeke

**Engine Type:** Inboard

**Fuel Type:** Diesel

---

# DETAILED INFORMATION

---

## Description

---

***Make your cruising dreams a reality in a world class yacht!***

***Windscape is an exceptional USCG documented vessel perfectly poised in Marmaris, Turkey to explore the Mediterranean and beyond!***

***Extremely versatile center cockpit centerboard/keel Ted Hood design. Windscape is one of two center cockpit 41.1 XT (extended transom) models built by Bristol and features two generously oversized lazareete lockers not found on other 41.1 models... a real bonus for liveaboard cruisers. She is identical to the 43.3 in exterior design with a vertical transom, this model was renamed a 43.3 in 1985. The only difference between the two models is in the aft master stateroom configuration... all other aspects remain the same. This design offers many unique features seldom found on a yacht of this size, including two private staterooms with ensuite heads and two large lazarette lockers.***

***Bristol is highly regarded as a solid, blue water cruiser/racer...easily single handled or by a couple. Her long fin keel with skeg hung rudder and centerboard down at 10' track well and handle heavy weather with ease. Her 4'6" draft is ideal for shallow anchorages and traversing canals.***

***This proven blue water yacht is well equipped for long term cruising including a 4 man Liferaft, Water maker, SSB, Radar, GPS, Autopilot, In mast main furling system (2010), Roller furler (2010), Oversized Standing rigging (2010) and running rigging (2010) and much more....***

***She will turn heads in every port with her classic sheer line, appealing awlgripped jade mist green hull and highly varnished teak cap rails, toe rail and exterior trim.***

***Her interior appointments and spacious accommodations are hard to beat! She has been lovingly maintained by long time owners and upgraded with many custom features to make her luxurious and practical.***

***As the exclusive US brokerage, you can be assured of a smooth transaction as all funds and documentation will be handled in the US. All resources are in place for showings and surveys.***

***For the past 23 years, "Windscape" has given her current owners a safe, seaworthy and comfortable vessel in which they have cruised extensively. They have enjoyable memories and stories they will be sharing forever. This is your opportunity to do the same....***

***She is worthy of your strong consideration!***

---

## Accommodations

---

- Bristol Yachts are well known for their excellent joinery work
- Teak and holly sole
- Warm teak joinery throughout
- Solid teak doors and cabinets
- Layout maximizes function, graciously accommodating 6-8 people below deck
- Interior is open and spacious, 6'6" headroom
- Spacious and comfortable yet casually elegant main salon
- L-shaped dinette to port and a long facing settee opposite with an entertainment center above. Each settee can also be an extra bunk
- Above both settees are two large storage cabinets that have been customized with elegant leaded and beveled glass door panels
- Custom teak book shelves with fiddles
- Behind and below every settee cushion (12) there are large lockers for loads of additional storage
- Built into the starboard settee forward is a custom wine and liquor locker & bar area that securely holds bottles, crystal decanters, wine and cocktail glasses
- The starboard bulkhead forward houses a large hanging locker with deep shelved storage behind
- Weems and Plath ship's clock and barometer
- The custom teak centerline floor-mounted dinette table is adjustable and features the unique yet practical ability to use either as a low cocktail table or a dining table. With the addition of one to 4 leaves, the table can easily expand to seat up to eight.
- All seating upholstery is in neutral Beige Chenille (2010) with custom designer accent pillows and curtains (2012)
- The addition of three custom deck prisms in smoked lexan add light and interest
- Custom full-wall mirror covering the port forward salon bulkhead above the settee
- Large galley is conveniently located in the passageway leading to the master stateroom
- Navigation station is to port of the companionway and faces outboard
- Large chart table with storage, a shelf for charts, and a shelf for electronics
- AC and DC electric panels with multiple circuit breakers and electrical distribution controls with easy access
- Additional deep storage is below the leather navigation seat
- Deep bookshelf is beneath the chart table
- Master stateroom is located aft through the galley passageway and features an over-sized athwart-ship double berth with a custom inner-spring mattress
- Decorator duvet and pillows
- Abundance of drawers, both below and at the front sides of the berth, with two Corian bureau tops
- Leather cushioned side seat
- (4) deep caned-front lockers at the foot and head of the berth
- Wide hanging locker with shelves on starboard
- Excellent ventilation and light is provided with 4 opening ports, one large hatch above the

berth, (2) dorade vents and (2) 12v fans

- Private en suite head is to port and features a ceramic sink with Corian vanity top & custom decorator fixtures
- Shower includes custom Grohe fixtures and oversized oval teak- framed mirror
- Abundant storage and provisioning room
- Forward Guest stateroom has a large V-berth configuration with a dressing seat in the middle with a filler to convert into one large bed
- Hanging locker to starboard, bureau and multiple lockers and drawers above and below the berths on each side
- Overhead hatch and opening ports provide good light and ventilation
- Dual access en suite head w/ shower, enter from salon or cabin
- Vanity w/ Corian counters, ceramic sink w/ designer faucets
- Manual head, shower w/ upgraded Grohe fixtures
- Large oval wall mirror
- Dorade vent and opening port provide excellent ventilation

## Galley

---

- The double sided galley features an outstanding working layout running fore and aft thru the passageway to the aft cabin
- Functional at sea as in port w/ copious storage for dishes, pots/pans/dry goods plus excellent working surface
- Double S/S sinks and a counter are inboard
- Stove/oven, refrigeration and separate freezer are outboard
- Above the galley sink is a large opening port for added light and cross ventilation
- Custom Corian countertops
- Double S/S deep sinks w/ custom Grohe fixtures
- Crosby 12 volt DC water cooled refrigeration w/ separate freezer compartment
- Shipmate 3 burner gimballed propane stove w/oven
- Solenoid switch and alarm
- Custom Krups built-in pull out toaster
- Custom built teak cabinet w/ pull-out S/S trash bin
- Custom built dish locker
- Custom hanging wine & drink glass holders
- Pressure water system
- 20 gallon (US) hot water heater w/ heat exchanger

## Sails & Rigging

---

- Selden Stowaway Furling Aluminum Keel Stepped Mast (New 2010)
- Selden Boom & Rodkicker B171 (New 2010)
- Selden Furlex 300S Genoa Roller Furling (New 2010)



- All New Oversized Standing Rigging Selden (New 2010)
- All New Running Rigging (New 2010)
- All Sail Controls Lead to Cockpit
- Mast-mounted Jam Cleats for Jib & Main Halyards (New 2010)
- Quick Release Cutter Stay
- Spinnaker Pole mounted vertically on Mast
- Inboard and outboard S/S genoa tracks
- Removeable Inner Forestay
- Insulated Backstay
- Schaefer Traveller
- Forespar expandable Whisker Pole
- All Lewmar Winches
- #55 CST Primary winches (2)
- #43 CST Main sheet
- #30 CST Reefing Winch
- #43 CST Jib Halyard
- #40 CST Main Halyard
- Centerboard Winch – Merriman
- 1998 Hood Dacron In-mast Furling Main
- 1998 Hood Dacron 130% Genoa
- 1998 Staysail/storm Jib
- 1995 Hood Asymmetrical Cruising Spinnaker w/sock

## Deck & Hull

---

- Awlgrip Hull (New 2011) Jade Mist Green (Dark Green) with clear coat and gold cove stripe. White boot stripe (2011)
- Dark red bottom Interlux Ultra Plus Bio-Lux paint (2013)
- West System epoxy barrier coat - 6 coats applied as a preventative moisture barrier (2011)
- All Teak on Deck stripped and varnished with 8 coats Epifanes (2015)
- Varnished teak rub-rail with S/S strike rail
- Varnished teak toe rail, drip rail, cockpit trim
- Four Varnished teak dorade boxes w/ chrome cowl vents and S/S guards
- Electric Windlass – Simpson Lawrence V2000, foot controls
- Anchor-CQR 45 lb. w/ 200 ft.of 3/8"chain rode
- Anchor- Fortress FX 23 w/ 250 ft. chain & rope rode
- Stainless steel stanchions w/ double lifelines, pulpit and pushpit, boarding gates port and starboard
- Stern gate with fold down custom S/S swim ladder with teak treads
- (11) Bomar anodized aluminum opening port lights with screens (all re-newed 2012)
- (4) Bomar anodized Deck hatches with screens & Sunbrella covers (all re-newed 2012)
- Spray Hood (Dodger) Sunbrella with S/S heavy duty grab rails and roll-up front Strataglass windows

- Bimini Sunbrella with connector to Spray Hood & Side Curtains
- Outboard motor bracket and hoist
- Cockpit cushions...Closed Cell foam...Green Sunbrella (New 2013)
- Custom Sunbrella Covers: All winches, windless, liferaft, pedestal, BBQ grill, dinghy, dinghy engine, Fortress anchor
- Varnished Teak cockpit table and drink holders
- Edson wheel steering w/ leather wrapped wheel
- Emergency Tiller
- 2 Jensen Cockpit Speakers
- 7 Fenders w/ Sunbrella Covers
- 6 Dock lines (New 2012)
- (2) 10-lb propane tanks in separate deck locker
- Magma Propane BBQ Grill
- Fiberglass decks with Off-White molded non-skid.
- Anchor Wash Down Fore Deck
- Fresh Water Shower, Hot & Cold, Aft Deck
- Dinghy: Avon 315 10 ft. Roll-Away
- Dinghy Outboard: Nissan 8hp

---

## Engine Room/Mechanical

---

- Excellent engine access
- Westerbeke 52 hp Diesel Engine (Hours: 4756)
- Max-Prop 3 blade feathering prop
- Racor fuel filter
- Espar (Eberspacher) D3L 12v Diesel Heater
- Water maker – ASC Marine Systems – Engine Driven 20 Gallons/hour
- (2 )Automatic Electric Bilge Pumps (1) Manual Bilge Pump
- Raritan 20 US Gallon Hot Water Heater
- Engine overheat, Bilge & Oil Pressure Alarms
- Engine room, insulated, lead-lined, ventilated
- Diesel Tanks: 2 S/S 100 US Gallons Total
- Fresh Water Tanks: 2 S/S 100 US Gallons Total
- Fresh Water Pump Paragon
- 2 Manual Raritan Heads w/ holding tank & bypass selector
- 30 US Gallon SS Holding Tank w/ Macerator
- All bronze seacocks – Disassembled & serviced 2013
- Salt water anchor & deck wash down and hot & cold fresh water shower aft

---

## Electronics & Navigation

---

- Autohelm ST-7000 interfaces with GPS at Nav Station

- Furuno 1730 Radar
- (2) Garmin GPS 128
- Navtex NASA Marine
- VHF Handheld Radio Standard Horizons HX255S
- Standard Horizon Omni VHF Radio
- Icom Single Side Band Transceiver Radio Model IC-737 w/ insulated backstay antenna & copper ground plate
- NavMan New Zealand Speed & Distance Log 3100 (2010)
- NavMan New Zealand Depth Sounder 3100 (2010)
- NavMan New Zealand Wind Indicator 3100 (2010)
- NavMan New Zealand Repeat 3100 (2010)
- Richie 5" Compass @ Helm Station
- Silva 70UN Hand Held Compass
- Radar Reflector Mast Mount
- JVC am/fm Radio w/DVD/CD player
- JVC Video Cassette Recorder
- Hitachi 14" TV
- Six speakers in salon, master stateroom & cockpit

---

## Electrical System

---

- Batteries House (New 2011) 6 Gel 4D 200 amp hrs each, Total 1200 amp hrs
- Engine Start Battery separate (New 2014) Maintenance Free
- (2) Alternators – House Alternator 190 amps – Engine Alternator 90 amps
- Xantrex Freedom 1800 HF Inverter/Charger (New 2013)
- Sterling 50 amp Battery Charger (New 2013)
- Step down Transformer from 220V to 110V
- 12v DC & 110v AC Breaker Panel w/ voltage & current displays adjacent to Nav Station
- 110v AC electrical system w/ 30 amp shore power cord
- 2 Battery monitoring system
- Lightning Protection
- Hull, rigging & machinery fully grounded w/ heavy duty copper bonding straps
- All Navigation Lights (New 2011)
- (6) 12v Fans throughout interior

---

## Design and Construction Details

---

- Bristols commitment to the highest standards in yacht construction
- Solid hand lay-up with five alternate layers of mat and woven roving and molded with high-impact fiberglass reinforced resin (FRP)with longitudinal stringers and transverse plywood

### bulkheads

- Deck is hand-laminated fiberglass with end-grain balsa/fiberglass-sandwich construction
- The deck, resting on a recessed flange inside the hull, is attached with stainless steel bolts at six-inch intervals
- A higher teak toe-rail completes the hull-to-deck bond and is also through bolted. The result is a bolt every three inches
- The deck house, deck and cockpit are integrally molded
- All structural bulkheads are fiberglassed to the hull and deck
- The boat has a simple sloop rig
- Below the waterline is a relatively long cruising fin keel with a skeg hung rudder
- The keel is internally poured lead (10,500 lbs. Ballast)
- centerboard arrangement, to maximize windward performance (10' board down) while allowing access to shoal draft areas (4' 6" board up).
- The centerboard is fiberglass and is controlled by a stainless steel cable to a Merriman centerboard winch on the cabin house
- The rudder shaft is 1 3/4" O.D. bronze and has a bronze skeleton welded to the shaft which is then encapsulated in fiberglass
- The custom high teak toe rail accents the stainless bow, stern and mid ship chocks which are finished off by a stem head fitting with integral anchor roller at the bow
- A large 'T' shaped cockpit surrounded with a teak cap rail includes a raised helmsman's seat offering optimum visibility
- Teak hand rails and four chrome dorades with teak boxes are appropriately placed on the cabin top
- All combine to beautifully highlight an outstanding deck lay-out that optimizes both efficiency and safety

---

## Exclusions

Owner's personal belongings.

---

## Disclaimer

The Company offers the details of this vessel or yacht in good faith but cannot guarantee or warrant the accuracy of this information nor warrant the condition of the vessel. A buyer should instruct his representatives, agents, or his surveyors, to investigate such details as the buyer desires validated. This vessel or yacht is offered subject to prior sale, price change, or withdrawal without notice.

# PHOTOS

**USCG documented vessel for sale in Marmaris, Turkey**



**At anchor in Greece**



**At anchor in Puerto Vallarta**



**In the Azores**



**At anchor in Cape Cod**



**Last haulout in Bodrim, Turkey (2013)**



**Hull configuration, center cockpit  
centerboard extended transom**



**Custom hi low table**



**Custom mirrored bulkhead**



**Salon looking aft**





**Leaded glass door panels**



**Navigation station to port of companionway**



**Great working galley and provisioning room**

**Galley in stbd passageway**

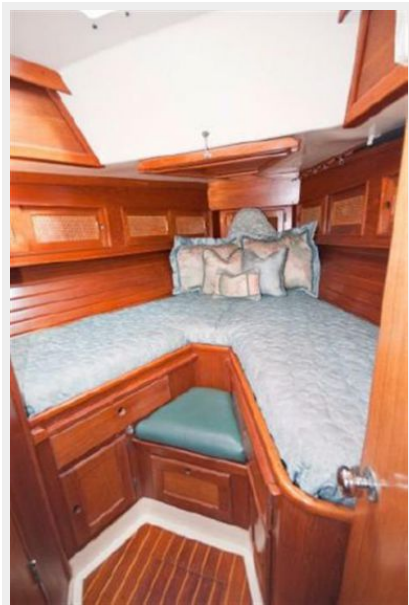


## Ensuite master head and shower

### Generous storage



### Guest stateroom



### Guest head and shower

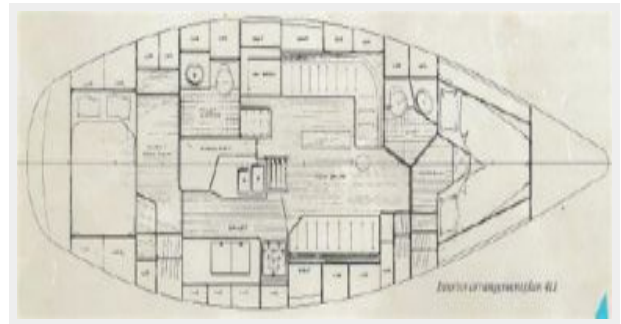




### Dual access from salon and guest cabin



### Layout diagram



### Clean 52 hp Westerbeke engine



### In mast furling main new 2010



### Liferaft, dorades and handrails



### Electric windlass and roller furling



### New Selden mast and oversized rigging 2010



### View from stern



## The Island of Fimi, Greece (favorite anchorage!)



---

# CONTACTS

---

Andrey Shestakov, leading yacht broker of the sales department of Shestakov Yacht Sales Inc. Shestakov Yacht Sales Inc., the official representative of the Miami/Fort Lauderdale FL headquarters.

---

## Contact details

---

Email: [andrey@shestakovyachtsales.com](mailto:andrey@shestakovyachtsales.com)

Web: [shestakovyachtsales.com/en/](http://shestakovyachtsales.com/en/)

---

## Telephones

---

USA: +1(954)274-4435

---

## Office hours

---

Monday – Saturday: **9:00 - 21:00** EDT

Sunday: **closed**

---

## Address

---



Harbour Towne Marina, 850 NE 3rd St,  
STE 213, Dania, FL 33004