

PERSEVERANCE II — OCEANFAST



Builder: OCEANFAST

Year Built: 1996

Model: Motor Yacht

Price: PRICE ON APPLICATION

Location: United States

LOA: 123' 0" (37.49m)

Beam: 27' 0" (8.23m)

Min Draft: 6' 0" (1.83m)

Max Draft: 6' 0" (1.83m)

Cruise Speed: 12 Kts. (14 MPH)

Max Speed: 16 Kts. (18 MPH)

Our experienced yacht broker, Andrey Shestakov, will help you choose and buy a yacht that best suits your needs **PERSEVERANCE II — OCEANFAST** from our catalogue. Presently, at Shestakov Yacht Sales Inc., we have a wide variety of yachts available on our sale's list. We also work in close contact with all the big yacht manufacturers from all over the world.

If you would like to buy a yacht **PERSEVERANCE II — OCEANFAST** or would like help answering any questions concerning purchasing, selling or chartering a yacht, please call **+1(954)274-4435**

TABLE OF CONTENTS

TABLE OF CONTENTS	2
SPECIFICATIONS	5
Overview	5
Basic Information	5
Dimensions	5
Speed, Capacities and Weight	5
Accommodations	6
Hull and Deck Information	6
Engine Information	6
DETAILED INFORMATION	7
Overview	7
Main Salon / Formal Dining	7
Accommodations	7
Crew Quarters	8
Galley and Laundry Equipment	8
Skylounge and Sundeck	8
Communications and Navigational Equipment	9
Audio/Visual Equipment	9
Mechanical Equipment	9
Electrical Equipment	10
Deck Equipment	10
Tenders and Toys	10
Safety and Fire Protection	10
Recent Work (2016)	10
Exclusions	14
Disclaimer	14
PHOTOS	15
Main Aft Deck	15

Main Aft Deck	15
Main Salon	15
Main Salon	15
Formal Dining	15
Formal Dining	15
Galley	16
Pilothouse	16
Pilothouse	16
Forward Sundeck Lounge	16
Forward Sundeck Lounge	16
Master Stateroom	16
Master Stateroom	17
Master Bath	17
Queen Midship Port	17
Forward Queen Starboard	17
Twin Guest Aft Starboard	17
Skylounge	17
Skylounge	18
Staircase	18
Upper Aft Deck	18
Upper Aft Deck	18
Upper Aft Deck Bar	18
Crew Lounge	18
Engine Room	19
Tender in Garage Stowage	19
Forward Waverunner Storage	19
PERSEVERANCE II	19
Layout	19
CONTACTS	20

Contact details	20
Telephones	20
Office hours	20
Address	20

SPECIFICATIONS

Overview

Basic Information

Category: Motor Yacht	Sub Category: Tri-Deck
Model Year: 1996	Year Built: 1996
Refit Year: 2015	Refit Type: Major
Country: United States	Vessel Top: Enclosed P.H. W/Sundeck
Fly Bridge: Yes	

Dimensions

LOA: 123' 0" (37.49m)	LWL: 104' 0" (31.70m)
Beam: 27' 0" (8.23m)	Min Draft: 6' 0" (1.83m)
Max Draft: 6' 0" (1.83m)	

Speed, Capacities and Weight

Cruise Speed: 12 Kts. (14 MPH)	Max Speed: 16 Kts. (18 MPH)
Max Speed Range: 2000 Kts.	Gross Tonnage: 299 Pounds
Water Capacity: 1060 Gallons	Holding Tank: 396 Gallons
Fuel Capacity: 10000 Gallons	

Accommodations

Total Cabins: 4

Sleeps: 10

Total Heads: 6

Crew Cabin: 3

Crew Berths: 6

Crew Sleeps: 6

Crew Heads: 3

Hull and Deck Information

Hull Material: Fiberglass

Hull Configuration: Semi-Displacement

Hull Color: White

Exterior Designer: Jon Bannenberg

Engine Information

Engines: 2

Manufacturer: MTU

Model: 8V396 TE94

Engine Type: Inboard

Fuel Type: Diesel

DETAILED INFORMATION

Overview

PERSEVERANCE II features 4 staterooms with an on-deck master. Having undergone a major refit in 2012, including a complete paint job, she shows in excellent condition and ready to go cruising. Powered by twin MTU 8V396 TE94 with the W5's completed in 2012.

PERSEVERANCE II offers the interior volume and exterior space comparable to much larger yachts. Featuring Naiad stabilizers, KVH V-Sat television, on-deck master, sky-lounge, tender garage and spacious sun-deck. The yacht has spent a considerable amount of time cruising the East Coast, Caribbean and Great Lakes.

Main Salon / Formal Dining

Entering from the aft deck will take you into the formal dining area with seating for eight. The dining arrangement is separate to the main salon looking aft. Included are buffet tables and fine China storage throughout. Walking forward into the main salon are three separate couches, full length windows and complete entertainment center with 55" TV and two adjoining desks. Forward of the main salon on the starboard side is the day head with access to the side decks.

Accommodations

On-Deck Master Stateroom:

The on-deck master stateroom is positioned on the main deck accessible on your starboard side through the main salon. The full width stateroom offers a his and hers en-suite bathroom with Jacuzzi tub and separate shower. Other features include full length windows, U-line refrigerator, entertainment system and large closets with ample storage.

Walking down to the additional three guest stateroom you land in a foyer with Miele washer and dryer to your port side. There are a total of 3 guest staterooms below deck with crew forward.

Forward Starboard Stateroom:

Queen size bed with large en-suite with shower. This guest stateroom can also be blocked off if needed from the other guest allowing for captain quarters with private entrance into the crew mess.

Aft Starboard Stateroom:

Twin bed's with en-suite shower to starboard. Pull down pullman berths can handle two additional guest sleeping a total of four. Large portholes offer plenty of light for spacious

stateroom.

Port Stateroom:

The port stateroom offers a Queen size bed en-suite. Each stateroom offers plenty of space for storage with full-size hanging lockers and pull out drawers under the berths.

Crew Quarters

Forward located crew quarters accommodating six crew provide owner and guest complete privacy. The crew can reach all levels without interrupting the guest with access to the galley, bridge and lower staterooms. Crew accommodations consist of three separate cabins, all en-suite, with 2 over-under bunks in each.

Dining table for crew with wrap-around seating Whirlpool microwave Kenmore dishwasher Refrigerator Large walk-in refrigerator with freezer Whirlpool washer/dryer Samsung 36" flatscreen TV Overhead speakers

Galley and Laundry Equipment

The galley is up on the port side forward of the main salon. With private access to the crew quarters, deck access and sky-lounge, this layout offers complete privacy while servicing below or above deck.

Miele induction ceramic cooktop- KM 5773 Stainless Steel Miele range hood GE electric oven Sharp microwave GE freezer Sub-Zero stainless steel refrigerator Whirlpool dishwasher Side-by-side sink

Laundry Equipment:

Washer and dryers are located in the crew quarters and guest foyer Miele Professional stackable washer and dryer in crew quarters Miele stackable washer dryer in foyer

Skylounge and Sundeck

Walking aft from the bridge you will enter the large skylounge with full length windows, entertainment area and plenty of space for lounging. One of the two couches has a pull out bed offering an additional berth for guest and kids. The skylounge also has a private bath with shower. Outside from the skylounge you will immediately notice what separates this yacht from the others. The enormous outdoor space aft of the skylounge and forward of the bridge is what makes this yacht one-of-a-kind.

Wet bar with granite bar top Ice-maker Refrigerator on starboard side Outdoor seating for 12 Skylight looking down to the aft deck Teak flooring Overhead electric blinds Forward of the bridge is the focal point on this yacht. Whether you're entertaining guests or spending time with your family, this is the perfect outdoor space with shaded sun pads, BBQ, refrigerator and speakers.

The captain also has wing stations to both port and starboard making for easy docking.

Communications and Navigational Equipment

Communication:

SATcom |KVH Mini M SATcom KVH V-SAT KVH Trac Vision V-7 New 2013 Telephone System: Panasonic 1232 Easaphone Hybrid PBX with 20 extensions and 7 incoming lines VHF: (2) Furuno FM - 2610 (2) HX 350 (2) HX 460 - FS-1562-15, HF Radio

Navigation:

Radar(1): Furuno 12 Kw with ARPA Radar(2): Furuno 6 Kw Gyrocompass: Sperry NAVIGAT X Mark II Magnetic Compass: Jupiter overhead compass & Cetrek Poseidon flush mount on flybridge. Automatic Pilot: Sperry NavPilot 4000 Depth Sounder: Furuno FCV - 581(2) B&G Hydra Z speed & depth Furuno AIS FA-150 Standard Horizon Quantum GX23605 ACR RCL 300 Searchlight Gateway Computer with 22" Dynex monitor Nobletec Navigation System Furuno Navtex NX 700 (6) FM walkie-talkies Alden 406 mhz Satfind EPIRB Model S-1015

Audio/Visual Equipment

Main Salon: 55" Pioneer Elite TV, Direct TV, Blu-ray, Yamaha entertainment Master Stateroom: 42" Samsung flatscreen TV, DVD, Direct TV receiver Fwd. Stb. Guest: 22" Insignia TV, DVD Port Guest: 20" Sharp TV, DVD Starboard Guest: 20" Sharp TV, DVD, Sharp stereo Sky Lounge: 22" Sony TV, DVD, Sony Stereo, Denon receiver, Wii player, PSW player Sky Lounge Deck: 42" flatscreen TV with electric cover, Outdoor stereo system Fwd. Sundeck: Outdoor speakers Aft Deck: Outdoor speakers

Mechanical Equipment

(2) MTU 8V396 TE 94 1500 hp MTU W-5 completed 2012 Gearboxes: Reintjes 2.458:1 reduction gears Propellers: (2) Generators: (2) Air Conditioning: Chilled Marine Air - New compressors in 2010 Watermaker Stabilizer: Naiad 404/16 Bow Thruster: Electric Naiad VT-60, 75 hp, 20" diameter Fuel Filtration: Racor Sewage System: Orca IIA-12 Marine Sanitary Device Fresh Water System: (10) Evac floor mounted 90 Aviara silent vac Steering System: International Shipyards

Electrical Equipment

Generators: (Port) 65 KW John Deere - NEW 2012 (Stb) 65 KW John Deere - NEW 2010 Output: 208/120V/3 phase/60 hz Shore Power: Atlas, 75 kva Shore Power Converter AGM 8D batteries new in 2013 (2) Mastervolt 24/25 Battery Charger

Deck Equipment

Muir HR-7000/150 horizontal anchor windlass (2) Muir docking capstans (2) 166kg polished s/s S.H.H.P balanced Jeyco anchors Fortress FX-125 stern anchor (2) 433' 17.5mm galvanized NVK2 Chain International Shipyards Davits 12' Sanguineti Chiavari telescopic gangway Marquipt 10-step boarding ladder

Tenders and Toys

(2) Yamaha WaveRunners with covers. Stowed on foredeck 15' Caribe 90 HP Evinrude outboard. Stowed in garage

Safety and Fire Protection

Fire Equipment: Nomex fire suits Chubb CO2 Unitor spiromatic breathing apparatus mode #217 U3/U4 with 1,400 liters free air capacity including spare cylinder Pair of non-conductive insulated boots Gel type fire blanket Standard fire blanket 30 meters of lifeline, 15mm in diameter Safety Equipment: (2) Viking 16-person USCG/SOLAS 1988 Approved life rafts First Aid Kit Waterproof flare canister (4) Plastic life buoys (2) Comet M.O.B. smoke and light signals (2) 30 meter lifelines (12) Comet parachute signal rockets, red Francis "ALDIS" 24cdc signal lamp Portable signaling lamp Complete set of international signal flags Set of nautical rescue signal tabs Comet Line throwing appliance (2) Black Anchor Balls

Recent Work (2016)

1) fresh water system rebuilt 2) grey water system rebuilt 3) blackwater system rebuilt 4) all heads rebuilt 5) passerelle overhauled 6) steering system completely rebuilt 7) generators serviced 8) oily water separator overhauled 9) orca system serviced 10) A/C inspected one chiller re-built 11) make up air system rebuilt 12) wing stations rebuilt 13) all headliners removed and inspected and all clips replaced 14) swim platform teak all replaced 15) garage crane serviced 16) bow crane serviced 17) side boarding ladders rebuilt and missing pieces manufactured 18) stabilizer system rebuilt 19) stabilizer fins dropped all seals replaced 20) rudder fins dropped new bearings and seals 21) bilge pump system completely redone 22) bilges cleaned, decreased and painted 23) new bottom paint (March 2016) 24) new zincs 25) bow thruster grates rebuilt 26) hull and

house wet sanded, buffed and waxed 27) interior up dated 28) various door and window seals replaced as required Additional work completed 2016:

Port engine:

Oil prelube rebuilt

Transmission piping redone

Lube oil and transmission fluids changed

Fuel filters rebuilt

Starboard engine:

Raw water flushed

Oil prelube rebuilt

Lube oil and transmission, fluids and filters changed

Fuel filters rebuilt

Solenoids on flaps replaced

Port generator:

Raw water system flushed

Raw water pump rebuilt

Oil and filter changed

Fuel filter rebuilt

Electrical fan connected for electrical section

Valves adjusted for exhaust overboard

Air compressor:

Installed box with starting switch

Stabilizers:

Replaced raw water pump

Rebuilt electric and hydraulic motors

Rebuilt system rams

Change filter and oil

Engine room air system:

Automatic louvers and electrical rebuilt

Heads:

All toilets removed and rebuilt

System checked for leaks

Vacuum pump rebuilt

Orca system cleaned

Orca pumps rebuilt

Oily water separator:

System cleaned

Pump rebuilt

Piping repaired

Solenoids replaced

Bilge Pumping System:

All valves rebuilt

Fuel Delivery System:

Alfa Laval cleaned

Gaskets replaced

Fuel manifold labeled

Alfa Laval tested to 30 gallons per minute

Chilled Water System (A/C):

No.2 compressor replaced

Compressors 1,3,4 checked for refrigerant

System flushed

Steering System:

Electric hydraulic motors rebuilt

New solenoids

Rudders disassembled, checked and repacked

System flushed

Auto pilot controls replaced

Wiring checked

Emergency Steering

Oil tank fitting O-ring

Rudder angle indicator and sender replaced

Aft Storage Access Door:

Wiring repaired

Passerelle:

Motor replaced

Switches repaired

Make Up Air:

Replaced forward evaporators

Pressure tested chilled loop

Installed start switch

Davits:

Adjusted boom motor – aft dinghy davit

Test bow davit

Electrical:

Bus bar replaced for owner's area circuit breakers

New 3-way switches – owner's cabin and boxes

Switches replaced – main engine room panel

Exclusions

Owner's personal belongings.

Disclaimer

The Company offers the details of this vessel or yacht in good faith but cannot guarantee or warrant the accuracy of this information nor warrant the condition of the vessel. A buyer should instruct his representatives, agents, or his surveyors, to investigate such details as the buyer desires validated. This vessel or yacht is offered subject to prior sale, price change, or withdrawal without notice.

PHOTOS

Main Aft Deck



Main Aft Deck



Main Salon



Main Salon



Formal Dining



Formal Dining



Galley



Pilothouse



Pilothouse



Forward Sundeck Lounge



Forward Sundeck Lounge



Master Stateroom



Master Stateroom



Master Bath



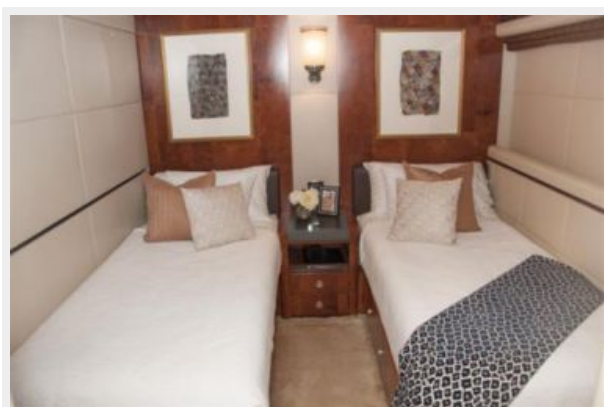
Queen Midship Port



Forward Queen Starboard



Twin Guest Aft Starboard



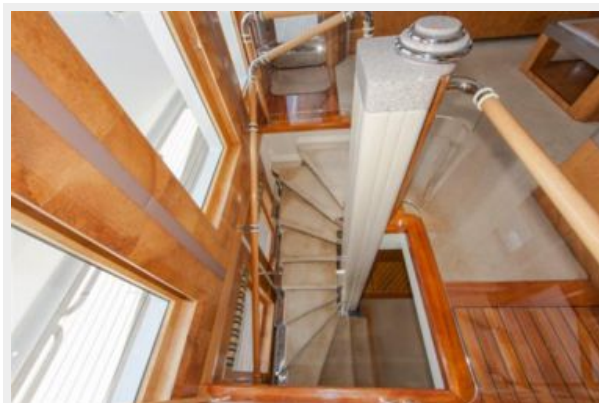
Skylounge



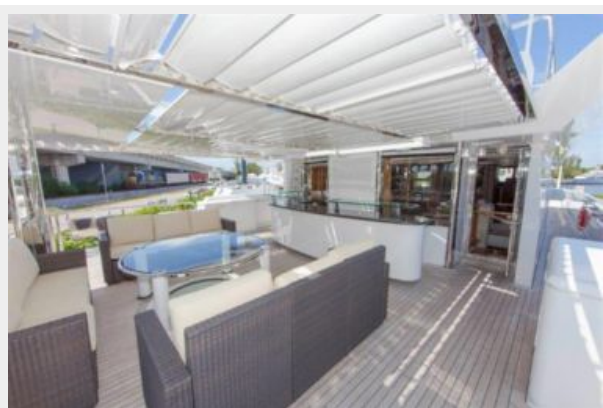
Skylounge



Staircase



Upper Aft Deck



Upper Aft Deck



Upper Aft Deck Bar



Crew Lounge



Engine Room



Tender in Garage Stowage



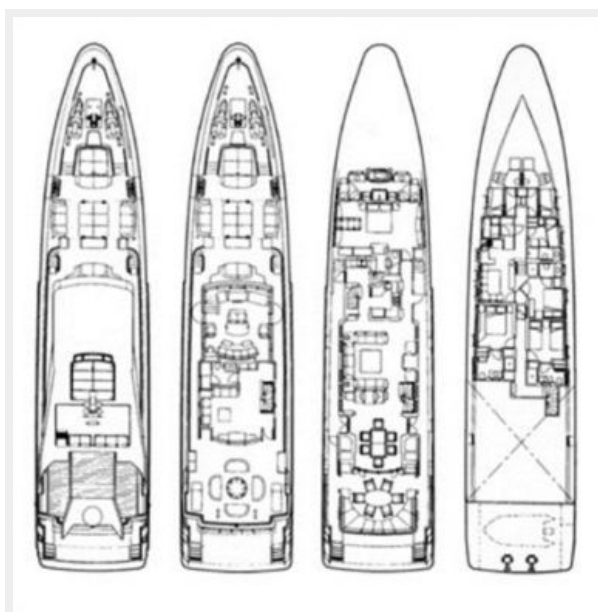
Forward Waverunner Storage



PERSEVERANCE II



Layout



CONTACTS

Andrey Shestakov, leading yacht broker of the sales department of Shestakov Yacht Sales Inc. Shestakov Yacht Sales Inc., the official representative of the Miami/Fort Lauderdale FL headquarters.

Contact details

Email: **andrey@shestakovyachtsales.com**

Web: shestakovyachtsales.com/en/

Telephones

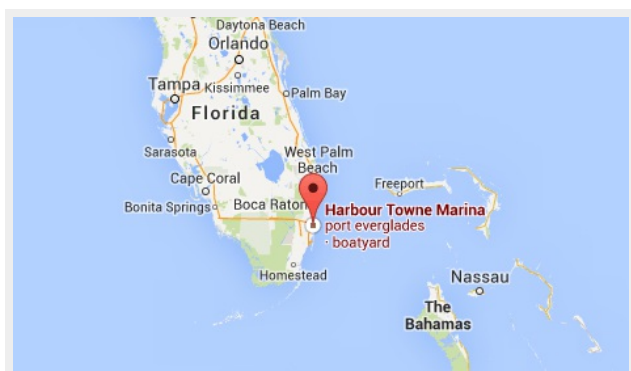
USA: **+1(954)274-4435**

Office hours

Monday – Saturday: **9:00 - 21:00 EDT**

Sunday: **closed**

Address



Harbour Towne Marina, 850 NE 3rd St,
STE 213, Dania, FL 33004