

51FT 2004 BERTRAM 510 CONVERTIBLE — BERTRAM



Builder: BERTRAM

Year Built: 2004

Model: Sport Fisherman

Price: PRICE ON APPLICATION

Location: Puerto Rico

LOA: 51' 0" (15.54m)

Beam: 16' 2" (4.93m)

Max Draft: 5' 0" (1.52m)

Max Speed: 41 Kts. (47 MPH)

Our experienced yacht broker, Andrey Shestakov, will help you choose and buy a yacht that best suits your needs 51ft 2004 Bertram 510 Convertible — BERTRAM from our catalogue. Presently, at Shestakov Yacht Sales Inc., we have a wide variety of yachts available on our sale's list. We also work in close contact with all the big yacht manufacturers from all over the world.

If you would like to buy a yacht 51ft 2004 Bertram 510 Convertible — BERTRAM or would like help answering any questions concerning purchasing, selling or chartering a yacht, please call +1(954)274-4435

TABLE OF CONTENTS

TABLE OF CONTENTS	2
SPECIFICATIONS	6
Overview	6
Basic Information	6
Dimensions	7
Speed, Capacities and Weight	7
Hull and Deck Information	7
Engine Information	7
DETAILED INFORMATION	8
Dimensions	8
Engines	8
Tankage	8
Accommodations	8
Main Salon	8
Galley	9
Guest VIP Stateroom	9
Master Stateroom	9
Guest Stateroom	10
Heads	10
Mechanical Equipment / Engine Room	10
Cockpit	11
FLYBRIDGE	11
Deck	12
Manufacturer Provided Description	12
Exclusions	12
Disclaimer	12
PHOTOS	14
Starboard side	14

Cockpit	14
Port side close up	14
Deck	14
Salon	14
Salon Sofa	15
Salon foward view of galley	15
Salon Starboard view	15
Salon foward view	15
Salon starboard TV cabinet	15
Salon Bose sepakers	15
Salon ice maker	16
Electric Panel	16
Galley countertop	16
Galley	16
Galley	16
Galley	16
Companionway	17
Master Stateroom	17
Master Stateroom	17
Master Stateroom	17
Master Stateroom	17
Master Stateroom	17
Master Head	18
Master Head	18
Guest Stateroom	18
Guest Stateroom	18
Guest Head	18
Guest VIP Stateroom	18
Guest VIP Stateroom	19

Guest VIP Stateroom	19
Washer & Dryer	19
Cockpit	19
Cockpit	19
Cockpit	19
Cockpit	20
Cockpit	20
Cockpit	20
Cockpit	20
Cockpit	20
Flybridge	20
Flybridge	20
Helm	21
Helm	21
Helm	21
Helm	21
Helm	21
Helm	21
Helm	21
Helm	22
Flybridge	22
Helm Enclosure	22
Bow	22
Engine Room	22
Engine Room	22
Engine Room	23
Engine Room	23
Engine Room	23
Engine Room	23
Engine Room	23
Watermaker	23

Engine Room	24
Engine Room	24
Engine Room	24
15.5kw Kohler generators	24
Generator motor	24
Generator motor	24
Manufacturer Provided Image	25
Manufacturer Provided Image	25
CONTACTS	26
Contact details	26
Telephones	26
Office hours	26
Address	26

SPECIFICATIONS

Overview

Bertram 51 Convertible has been the flagship of the new Bertram era! The most dry ride 50' in the market. Owner order this one and spec it with some very nice features that's included MAN 1,300hp, additional 3 bed in 3rd stateroom and (2) 15.5kw generators.

This 51 tops 40 knots and has a very fuel efficient cruising.

Some Options and Upgrades includes:

- *MAN 1,300hp (1,100hrs with MAN 1k hrs maintenance done)*
- *New MAN Engine Helm Monitor Panels*
- *2 Kohler 15.5kw Generators (1 stb & 1 port) Rebuild to 0 hrs in 2015*
- *Eskimo Ice Machine (rebuild in 2015)*
- *Pipewelders Fiberglass Hard Top*
- *Swim Platform*
- *Side mount Helm Electronic Controls*
- *New Garmin 7012 Touchscreen GPS*
- *New 2 Icom VHF IC-M604*
- *New Clarion CMD6 Radio*
- *New 4 JL Speakers*
- *New 3 A/C Units*
- *New Freshwater Pumps*
- *600gal watermaker (New low pressure and high pressure pumps and Membrane)*
- *New Blowers*
- *Custom bunk ned in 3rd stateroom*
- *Some interior wood already painted*

Owner would consider trades!

Please call Luis Ayala for more info. DYSID:3009189

Basic Information

Category: Sport Fisherman

Sub Category: Convertible

Model Year: 2004

Year Built: 2004

Country: Puerto Rico

Dimensions

LOA: 51' 0" (15.54m)

Beam: 16' 2" (4.93m)

Max Draft: 5' 0" (1.52m)

Clearance: 15' 6" (4.72m)

Speed, Capacities and Weight

Max Speed: 41 Kts. (47 MPH)

Displacement: 59535 Pounds

Water Capacity: 185 Gallons

Holding Tank: 82 Gallons

Fuel Capacity: 1057 Gallons

Hull and Deck Information

Hull Material: Fiberglass

Engine Information

Engines: 2

Manufacturer: MAN

Model: D2842LE

Engine Type: Inboard

Fuel Type: Diesel

DETAILED INFORMATION

Dimensions

- LOA: 51 ft 0 in
- Beam: 16 ft 2 in
- Maximum Draft: 5 ft 0 in
- Displacement: 65500 lbs
- Bridge Clearance: 15 ft 7 in
- Builder: Bertram
- Designer: Marty Lowe, Inc.
- Flag of Registry: United States
- Hull Shape: Modified Vee

Engines

- Engine Brand: Twin MAN D2842LE
- Year Built: 2004
- Engine Type: Inboard
- Engine/Fuel Type: Diesel
- Engine Hours: 1,100
- Drive Type: Direct Drive
- Engine Power: 1300 HP

Tankage

- Fresh Water Tanks: 1 (185 Gallons)
- Fuel Tanks: 1 (1040 Gallons)
- Holding Tanks: 1 (82 Gallons)

Accommodations

- Number of cabins: 3
- Number of heads: 2

Main Salon

- Salon Carpet with Teak & Holly floor in Galley and Dinette
- U Shaped Seating

- LCD 27" TV/DVD and Bose 35 Surround System
- Vinyl headliner
- Central vacuum system
- Electrical distribution panels
- Ice maker
- 120v and 12v lighting
- Dry bar with bottle storage

Galley

- Granite Countertops
- AmtikoTeak laminate flooring
- Sub-Zero drawer type refrig/freezers
- KenyonThree burner cooktop
- Microwave oven in cabinet
- Vinyl headliner
- Single lever hot and cold faucet
- 120v lighting
- Designer countertops and sink
- U shaped dinette with granite table
- 120v outlets

Guest VIP Stateroom

- Queen sized berth with storage under
- Air conditioning controls
- 13" LCD flat screen TV
- AM/FM stereo with CD player
- Hull side storage lockers
- Opening hatch with shade
- Carpeting
- Vinyl headliner
- 120v and 24v lighting
- 120v receptacles

Master Stateroom

- Queen sized berth with storage under
- 13" LCD flat screen TV
- AM/FM stereo with CD player
- Air conditioning controls

- Mirrored aft bulkhead
- Hull side storage lockers
- Opening hatch with shade
- Carpeting
- Vinyl headliner

Guest Stateroom

- Custom bunk bed
- Three single berths
- 13" LCD flat screen TV
- Air conditioning controls
- AM/FM stereo with CD player
- Hull side storage shelves
- Cedar hanging locker
- Vinyl headliner
- 120v and 24v lighting
- Carpeting

Heads

- Vanity locker with mirror panels
- Stall shower with door and floor grate
- Electric Tecma elongated heads
- Air conditioning vents
- 120v and 24v lighting
- Exhaust blowers
- Mirrored ceilings
- Vinyl flooring
- GFI receptacles
- Opening hatch with shade

Mechanical Equipment / Engine Room

- Twin MAN D2842LE 1,300hp
- (2) 15.5Kw Kohler generator with sound shield
- (2) Mastervolt 24/40-3 Battery Charger
- Vanner Voltmaster 60 amp battery equalizer mod. 65-60
- Emergency engine shut down system
- 30 gallon 240v water heater
- Acoustic and thermal insulation

- Fixed fire extinguishing system
- Blowers (4) in engine room
- Blowers (2) in lazarette
- Removable engine room access ladder
- Single 1,040 gal fuel tank w/fills
- DC and AC bilge lighting
- Bronze rudders and struts
- Hydraulic steering with power assist
- Air conditioning sea water pump
- Saltwater washdown pump

Cockpit

- Insulated cooler for eskimo ice
- (2) freezer in cockpit locker
- Fiberglass cockpit table
- Custom aluminum extended shade
- 168 sq.foot cockpit with lighting
- Flybridge ladder with plexi steps
- Fresh water washdown
- Glendenning cable master power supply both Port and Starboard
- Lights in aft hardtop overhang
- Cockpit coaming padding
- Access hatches to lazarette, gasketed, scuppered and dogged
- Removable fish box with macerator pump
- (3) Underwater Lights

FLYBRIDGE

- (2) Release marine teak helm chair with 4" pedestals
- New MAN electronic monitors
- Palm Beach electronic controls
- Power actuated electronics console
- Strataglass center console enclosures
- Recessed LED lights
- Rod holders
- Distribution panels in locker
- LED navigation lighting
- Air horn
- Clarion CMD6 Stereo
- (2) Icom IC-M604 VHF with optional Mic (new)
- Garmin 7012 Touchscreen GPS (new)

- Furuno Navnet GPS/ Radar / Sounder
- Furuno RD-30 Depth & temp
- Simrad AP22 Autopilot
- Pipewelders half tower
- Euro style quartz lights
- Triple spreader outriggers
- Remote windlass control
- Full instrumentation and compass
- U shaped seating with cushions
- Helm and companion pedestal seating
- Stainless steel helm steering wheel

Deck

- Bow pulpit
- Windlass
- Bow Rail aluminum
- Retractable Davit for tender
- Aluminum shocks for Tender

Manufacturer Provided Description

The Bertram 510 Convertible has a modified deep-V hull that ensures the most comfortable ride in all sea conditions. Redesigned rudders and struts reduce hydrodynamic drag and increase performance, while redesigned propellers reduce vibration and noise. Engineers from the Ferretti Group, parent company of Bertram Yacht, added their knowledge of the latest construction and lamination techniques honed through years on the international offshore race circuit. The interior of the 510 Convertible has a spacious salon, while the functional galley on the main level leads to three comfortable cabins below. With sophisticated computer-aided design programs, Bertram engineers planned every aspect of the mechanical and interior layout to ensure optimum trim under all conditions for a consistently superior performance. For the sportfisherman, the Bertram 510 Convertible provides a fishing platform that meets and exceeds the demands of the most avid tournament angler.

Exclusions

Owner's personal belongings.

Disclaimer

The Company offers the details of this vessel or yacht in good faith but cannot guarantee or

warrant the accuracy of this information nor warrant the condition of the vessel. A buyer should instruct his representatives, agents, or his surveyors, to investigate such details as the buyer desires validated. This vessel or yacht is offered subject to prior sale, price change, or withdrawal without notice.

PHOTOS

Starboard side



Cockpit



Port side close up



Deck



Salon



Salon Sofa



Salon foward view of galley



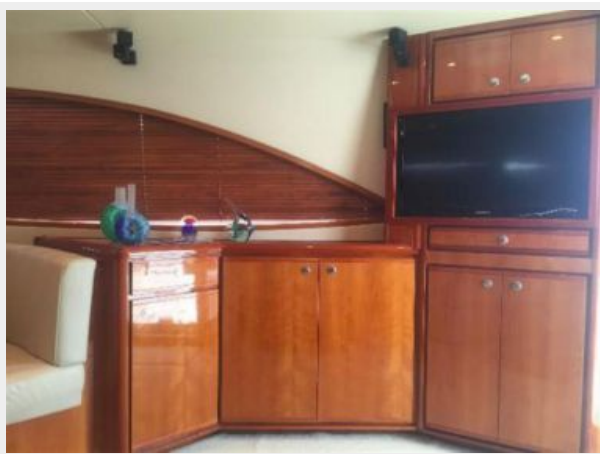
Salon Starboard view



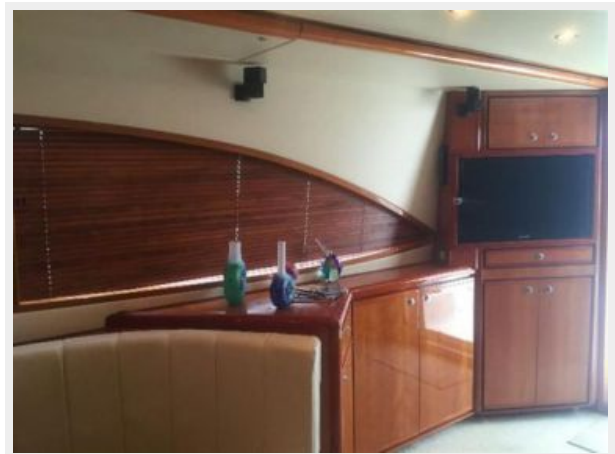
Salon foward view



Salon starboard TV cabinet



Salon Bose sepakers



Salon ice maker



Electric Panel



Galley countertop



Galley



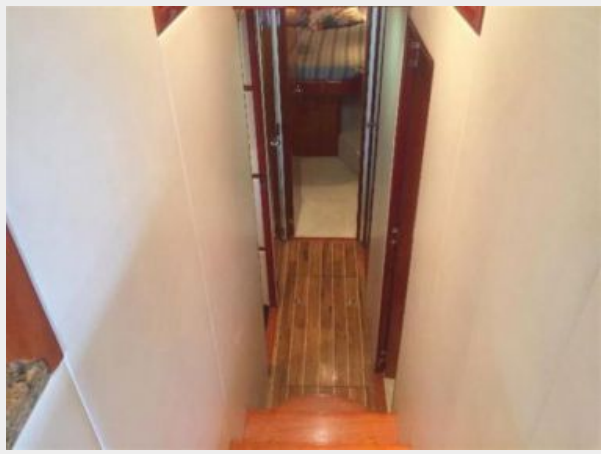
Galley



Galley



Companionway



Master Stateroom



Master Stateroom



Master Stateroom



Master Stateroom



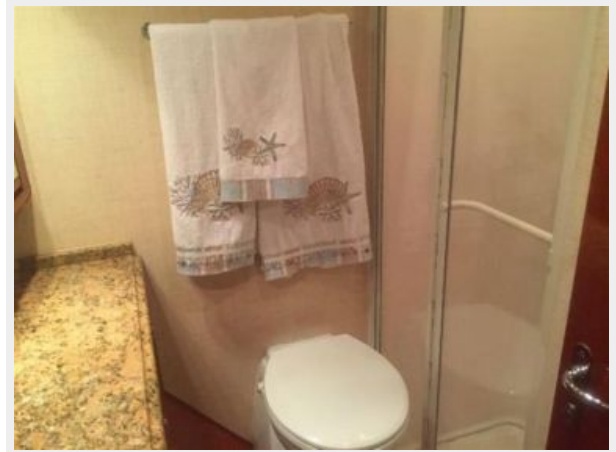
Master Stateroom



Master Head



Master Head



Guest Stateroom



Guest Stateroom



Guest Head



Guest VIP Stateroom



Guest VIP Stateroom



Guest VIP Stateroom



Washer & Dryer



Cockpit



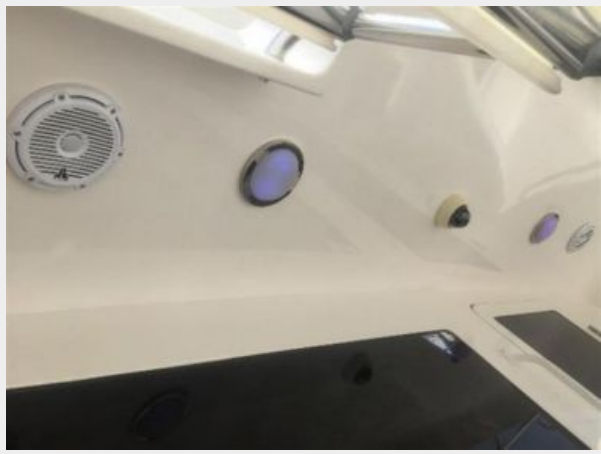
Cockpit



Cockpit



Cockpit



Cockpit



Cockpit



Cockpit



Flybridge



Flybridge



Helm



Helm



Helm



Helm



Helm



Helm



Helm



Flybridge



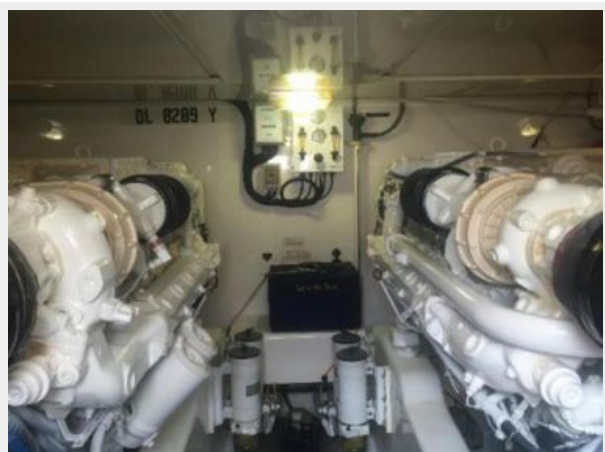
Helm Enclosure



Bow



Engine Room



Engine Room



Engine Room



Engine Room



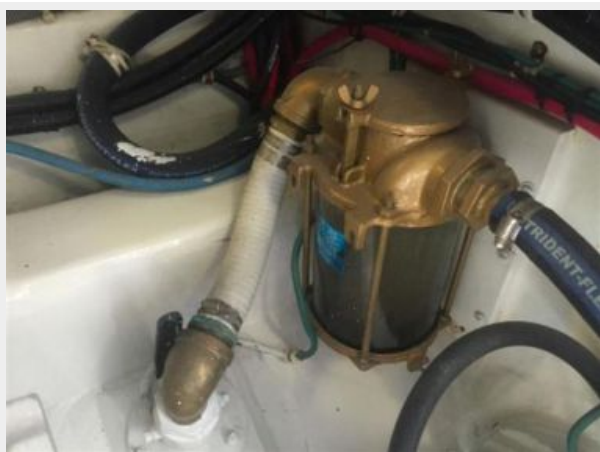
Engine Room



Engine Room



Engine Room



Watermaker



Engine Room



Engine Room



Engine Room



15.5kw Kohler generators



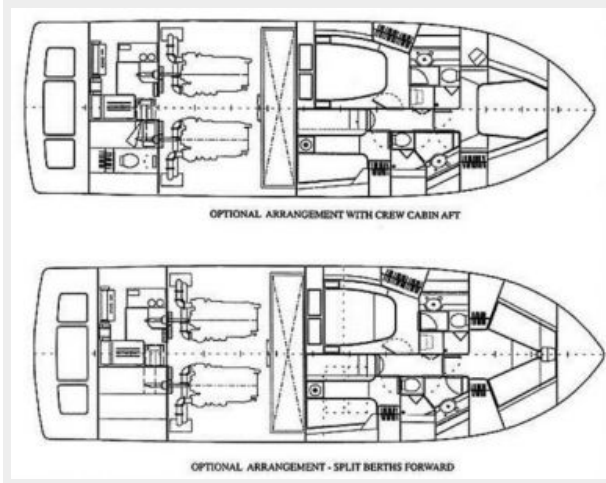
Generator motor



Generator motor



Manufacturer Provided Image



Manufacturer Provided Image



CONTACTS

Andrey Shestakov, leading yacht broker of the sales department of Shestakov Yacht Sales Inc. Shestakov Yacht Sales Inc., the official representative of the Miami/Fort Lauderdale FL headquarters.

Contact details

Email: andrey@shestakovyachtsales.com

Web: shestakovyachtsales.com/en/

Telephones

USA: +1(954)274-4435

Office hours

Monday – Saturday: **9:00 - 21:00** EDT

Sunday: **closed**

Address



Harbour Towne Marina, 850 NE 3rd St,
STE 213, Dania, FL 33004