

# 40FT 2005 CARVER YACHTS 396 ES MOTOF — CARVER



**Builder:** CARVER

**LOA:** 39' 0" (11.89m)

**Year Built:** 2005

**Beam:** 13' 11" (4.24m)

**Model:** Motor Yacht

**Price:** PRICE ON APPLICATION

**Location:** United States

Our experienced yacht broker, Andrey Shestakov, will help you choose and buy a yacht that best suits your needs 40ft 2005 CARVER YACHTS 396 ES Motor Yacht — CARVER from our catalogue. Presently, at Shestakov Yacht Sales Inc., we have a wide variety of yachts available on our sale's list. We also work in close contact with all the big yacht manufacturers from all over the world.

If you would like to buy a yacht 40ft 2005 CARVER YACHTS 396 ES Motor Yacht — CARVER or would like help answering any questions concerning purchasing, selling or chartering a yacht, please call +1(954)274-4435

# TABLE OF CONTENTS

TABLE OF CONTENTS	2
SPECIFICATIONS	3
Overview	3
Basic Information	3
Dimensions	3
Speed, Capacities and Weight	4
Accommodations	4
Hull and Deck Information	4
Engine Information	4
DETAILED INFORMATION	5
FLYBRIDGE	5
Salon	5
Galley	5
Master Stateroom	6
Guest Stateroom	6
ELECTRONICS	6
TENDER & DECK	6
MECHANICAL & ENGINE ROOM	7
Construction	8
Exclusions	8
Disclaimer	8
PHOTOS	9
CONTACTS	20
Contact details	20
Telephones	20
Office hours	20
Address	20

---

# SPECIFICATIONS

---

## Overview

---

**MOTIVATED SELLER !**

**BRING WRITTEN OFFERS !**

**MUST SEE ! SURVEY READY !**

**This Meticulously Maintained Carver 396 Extended Salon is as "NEAT AS A PIN" Ready for Survey.... Only 425 Hrs on Her and TAM63P Volvo Diesels.. The Attention to Detail is displayed throughout this Must See Carver 396 ES .**

**The Impeccable Salon / Staterooms & Galley of this Yacht are stunning displays of interior volume unmatched to a Yacht of this size.**

- **A Fully Enclosed Flybridge with A/C & Heat - Entertaining Area & Wet Bar**
- **Integrated Staircase Leading to a Spacious Aft Deck w/ Transom Door to Large Swim Platform w/ Hot & Cold Shower**
- **Hydraulic Tender Sea Lift ...2012 Tender Included**
- **Service Records Available...The List Goes On !**

**THE PROUD OWNERS ARE CONSIDERING DOWN SIZING AND WILL ENTERTAIN PARTIAL TRADES..(NEWER 28-32 OVERNIGHT CRUISERS )**

---

## Basic Information

---

**Category:** Motor Yacht

**Model Year:** 2005

**Year Built:** 2005

**Country:** United States

---

## Dimensions

---

**LOA:** 39' 0" (11.89m)

**Beam:** 13' 11" (4.24m)

---

## Speed, Capacities and Weight

---

**Displacement:** 29500 Pounds

**Water Capacity:** 90 Gallons

**Holding Tank:** 72 Gallons

**Fuel Capacity:** 330 Gallons

---

## Accommodations

---

**Total Cabins:** 2

**Total Heads:** 2

---

## Hull and Deck Information

---

**Hull Material:** Fiberglass

---

## Engine Information

---

**Engines:** 2

**Manufacturer:** Volvo

**Model:** TAMD63P

**Engine Type:** Inboard

**Fuel Type:** Diesel

---

# DETAILED INFORMATION

---

## FLYBRIDGE

---

- Full Enclosure for Bridge Area W/ AIR CONDITIONING & HEAT
- Electronics Arch
- Captain Chair w/ Adjustable Pedestal
- Large Companion Seat
- Large L- Shaped Lounge Seating
- Carpet (removable for e-z clean up)
- Wet Bar w/ Sink
- Rariton Ice Maker
- Self Draining Deck
- Clarion AM/FM CD Stereo System
- Bow Thruster Control
- Remote Spotlight

## Salon

---

- Grand Salon Area w/ Beautiful Cherry Wood Interior w/ 6'10" headroom
- Ultra Leather L- Shape Couch ( w/ recliners )
- Ultra Leather Sofa ( w/ recliners )
- Entertainment Center - Sole 26' Flat Screen w/full time Direct TV / Satellite Radio / DVD
- Extra Large Windows w/ de'cor Matched Curtains
- Recessed Lighting
- Central Vac
- A/C - D/C Distribution Panel
- EZ Engine Room Access

## Galley

---

- Corian Solid Surface Counter Top
- Cheery Wood Cabinetry & Flooring
- Side by Side Freezer / Fridge ( Under Counter )
- 3 Burner Glass Cook Top
- Sharp Convection / Microwave Oven
- Stainless Steel Double Sink
- Upper & Lower Storage Cabinets
- Dinette w / Bench Seating w/ Storage Beneath
- Cherry Wood Table Top

---

## Master Stateroom

---

- Queen Walkaround Island Bed w/ End Tables
- Recessed Lighting & Overhead Reading Lights
- Sole Flat Screen TV ( full time Direct TV )
- Cherry Wood Interior
- Cedar Lined Storage Lockers
- Co- Detector
- Private Head (vacuflush)
- Full Stand Up Shower w/ bench seat & sky light
- Full Vanity w/ Corian Countertop
- Exhaust Fan / Vent

---

## Guest Stateroom

---

- Double Offset Bed
- Overhead Hatch w/ Shade
- Cherry Wood Design Woodwork
- Separate A/C Controls
- Abundant Storage
- Cedar Lined Hanging Locker (lighted)
- Overhead Recessed Lighting
- Sole Flat Screen TV/DVD Player ( Full Time Direct TV )
- Private Forward Head Entrance & 2nd Passage Way Entrance
- Granite Top Vanity w/ Integral Sink
- Exhaust Fan

---

## ELECTRONICS

---

- Ritchie Compass
- Raymarine ST6002 Smart Pilot
- Raymarine ST60 Depthsounder
- Raymarine RL70C Pathfinder - Chart/Log/Radar
- Raymarine Ray 215 DSC VHF
- Raymarine E95 MFD
- Boat is wired for Raymarine Sea Talk

---

## TENDER & DECK

---

- 2012 Merc 310 '9'9" Tender w/ 2005 8hp Merc 4 Stroke (just serviced)
- Tender Hydraulic Sea Lift Cradle ( stainless steel )
- Freshwater Washdowns at Transom Steps (w/hotwater) and Anchor Locker
- Maxwell 800 Windlass (150' 8mm all chain) w/ foot controls
- Bridge & Aft Deck Carpeting
- Deck Storage Box on Swim Platform
- Remote Control Spotlight
- Acrylic Cockpit Wing Doors Port and Starboard - Open to Side Decks
- Fender Racks
- Stainless Steel Handrails

---

## **MECHANICAL & ENGINE ROOM**

---

- Twin Volvo TAMD63 Diesel Engines
- Propellers ( pulled & tuned 10/2014 )
- Air conditioning - 3-Zone, w/ Reverse Cycle Heat
- Onan 11.5 KW Generator ( 475hrs )
- 6 Interstate Batteries new 2014 - (5)Boat (1) Bowthruster
- Bow thruster
- Engine Oil Change System
- Overboard After Tank w/ Pump
- Bilge Alarm - (high water)
- Engine Alarms - Temperature & Oil Pressure
- Fire Suppression System - Automatic
- Dripless Shafts
- Hydraulic Steering
- Internal Seawater Strainers
- Propeller Shafts - Aquamet

- Trim tabs - stainless steel, hydraulic
- Bilges Coated w/ White, Low-VOC Gelcoat
- Insulation - Acoustical & Thermal Vinyl Vapor Barrier

---

## Construction

---

- Cherry wood bulkheads cabinetry, and trim throughout cabin, with high-gloss finish
- Fabricated aluminum floor frames with stainless steel stanchions
- Hand-laid, molded fiberglass components featuring composite laminate hullsides, decks, and cabintops
- Molded fiberglass stringer system
- Solid fiberglass hull bottoms with Knytex substrates and Vinylester barrier coat
- Structural engine mountings reinforced stringer mountings with gusseted, angle steel plates
- Tinted, tempered safety glass frameless window systems
- Unitized deck & cabintop construction with integral aluminum truss reinforcement in cabintop structure

---

## Exclusions

---

Owner's personal belongings.

---

## Disclaimer

---

The Company offers the details of this vessel or yacht in good faith but cannot guarantee or warrant the accuracy of this information nor warrant the condition of the vessel. A buyer should instruct his representatives, agents, or his surveyors, to investigate such details as the buyer desires validated. This vessel or yacht is offered subject to prior sale, price change, or withdrawal without notice.



# PHOTOS

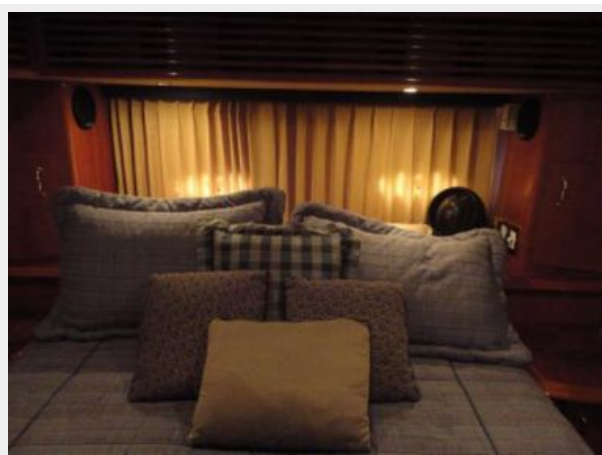


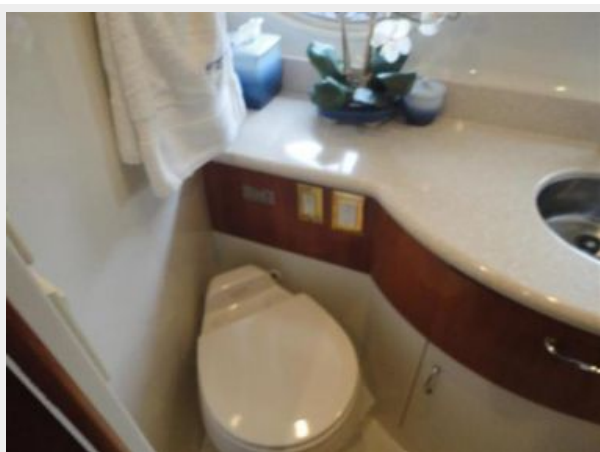
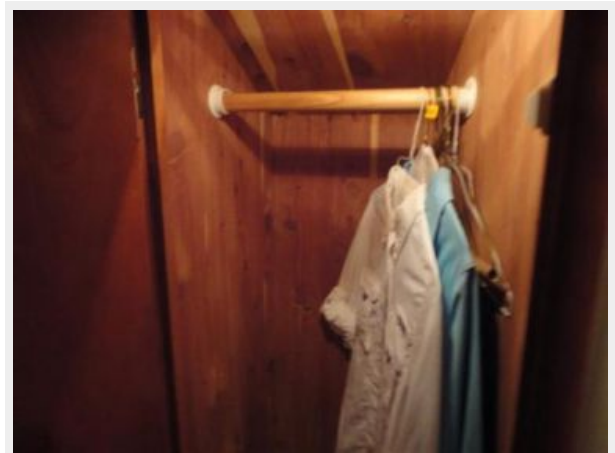
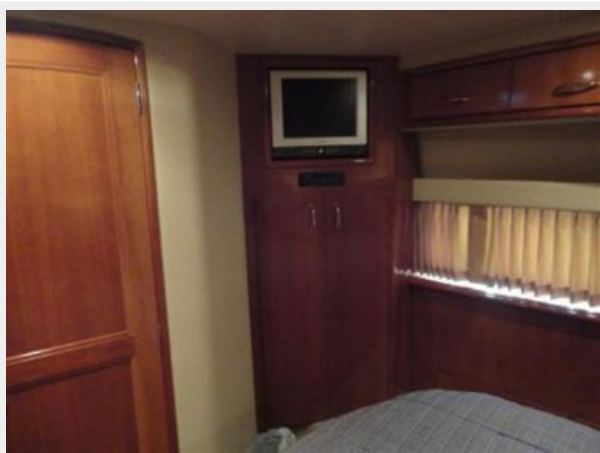
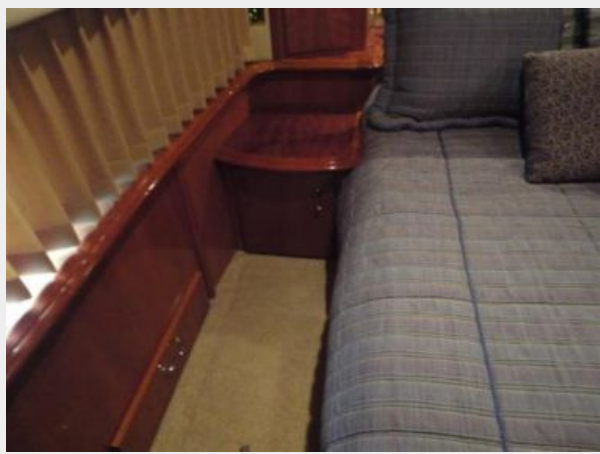










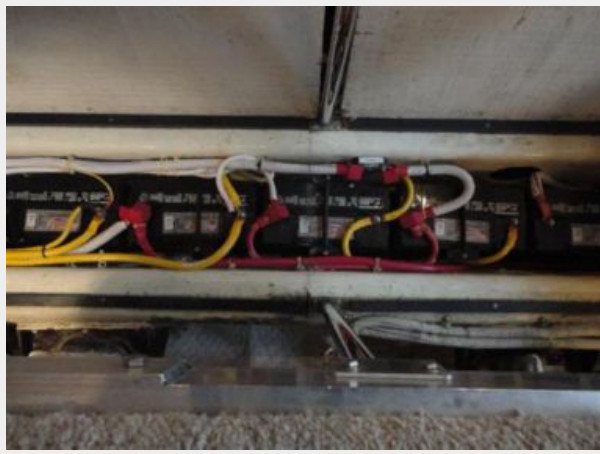












# CONTACTS

---

Andrey Shestakov, leading yacht broker of the sales department of Shestakov Yacht Sales Inc. Shestakov Yacht Sales Inc., the official representative of the Miami/Fort Lauderdale FL headquarters.

## Contact details

---

Email: [andrey@shestakovyachtsales.com](mailto:andrey@shestakovyachtsales.com)

Web: [shestakovyachtsales.com/en/](http://shestakovyachtsales.com/en/)

## Telephones

---

USA: +1(954)274-4435

## Office hours

---

Monday – Saturday: **9:00 - 21:00** EDT

Sunday: **closed**

## Address

---



Harbour Towne Marina, 850 NE 3rd St,  
STE 213, Dania, FL 33004