

DUE RAGAZZI — SEA RAY



Builder: [SEA RAY](#)

Year Built: 2006

Model: Cruiser

Price: PRICE ON APPLICATION

Location: United States

LOA: 37' 5" (11.40m)

Beam: 12' 0" (3.66m)

Min Draft: 2' 3" (0.69m)

Max Draft: 3' 1" (0.94m)

Our experienced yacht broker, Andrey Shestakov, will help you choose and buy a yacht that best suits your needs **Due Ragazzi — SEA RAY** from our catalogue. Presently, at Shestakov Yacht Sales Inc., we have a wide variety of yachts available on our sale's list. We also work in close contact with all the big yacht manufacturers from all over the world.

If you would like to buy a yacht **Due Ragazzi — SEA RAY** or would like help answering any questions concerning purchasing, selling or chartering a yacht, please call **+1(954)274-4435**

TABLE OF CONTENTS

TABLE OF CONTENTS	2
SPECIFICATIONS	5
Basic Information	5
Dimensions	5
Speed, Capacities and Weight	5
Accommodations	5
Hull and Deck Information	5
Engine Information	6
PHOTOS	7
Transom/Swim platform	7
Remote stereo control + swim platform	7
Starboard view	7
Port view	7
Port close-up	8
Starboard broad view	8
Kohler power generator 5.0kw	8
Kohler generator 5.0kw close-up	9
Hydraulic engine room hatch	9
Transom	10
Port close-up	10
Galley	10
Galley	10
Galley view w/storage	10
Flatscreen T.V.	10
Microwave + coffee maker combo	11
Galley + Head	11
Head external view	11
Head internal view	11

Head faucet + shower head combination	12
Head + storage	12
Mid-stateroom conversation area	12
Head sink	12
Mid-stateroom view w/flatscreen t.v.	13
Electrical panel	13
Electrical panel close-up	13
View of aft	13
Mid-stateroom + flatscreen t.v.	13
Mid-stateroom conversation area w/privacy curtain	14
Mid-stateroom conversation area w/privacy curtain interior view	14
Dinette	14
Salon sofa/berth	14
Salon sofa/berth converted to bed	14
Salon storage view	14
V-Berth closet storage	15
V-Berth	15
V-Berth	15
V-Berth with side storage	15
V-Berth + hatch	16
V-Berth w/privacy curtains	16
V-Berth w/privacy curtains interior view	16
Helm seating	16
Helm folded seating	16
Instrument panel	16
Instrumental panel close-up	17
Bow	17
View from bow	17
Windless + remote searchlight	17

View from bow	18
View from bow	18
Raymarine radar/GPS	18
Power windshield vent	18
Cockpit wet-bar	19
Cockpit	19
Cockpit sink	19
Transom storage	19
T-top extender	19
CONTACTS	20
Contact details	20
Telephones	20
Office hours	20
Address	20

SPECIFICATIONS

Basic Information

Category: Cruiser

Sub Category: Express

Model Year: 2006

Year Built: 2006

Country: United States

Dimensions

LOA: 37' 5" (11.40m)

Beam: 12' 0" (3.66m)

Min Draft: 2' 3" (0.69m)

Max Draft: 3' 1" (0.94m)

Speed, Capacities and Weight

Displacement: 14600 Pounds

Water Capacity: 45 Gallons

Holding Tank: 28 Gallons

Fuel Capacity: 225 Gallons

Accommodations

Total Berths: 4

Total Heads: 1

Hull and Deck Information

Hull Material: Fiberglass

Engine Information

Engines: 2

Manufacturer: Mercruiser

Model: T-VD-MX6.2L MPI V-Drives

Engine Type: Inboard

Fuel Type: Gas/Petrol

PHOTOS

Transom/Swim platform



Remote stereo control + swim platform



Starboard view



Port view



Port close-up



Starboard broad view



Kohler power generator 5.0kw





Kohler generator 5.0kw close-up



Hydraulic engine room hatch



Transom



Port close-up



Galley



Galley



Galley view w/storage



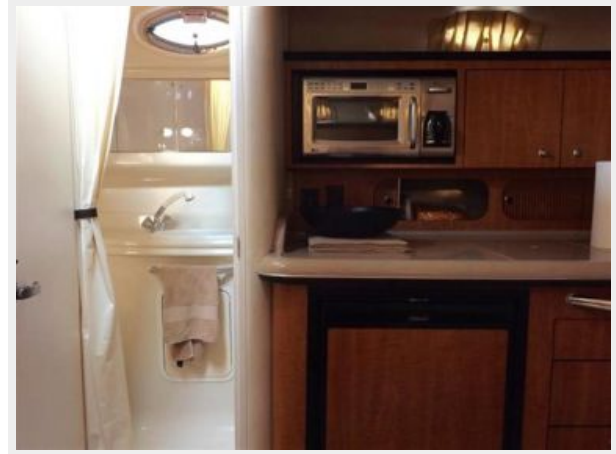
Flatscreen T.V.



Microwave + coffee maker combo



Galley + Head



Head external view



Head internal view



Head + storage

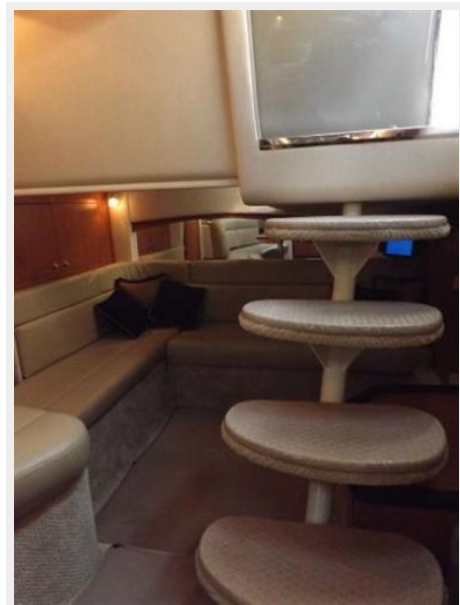
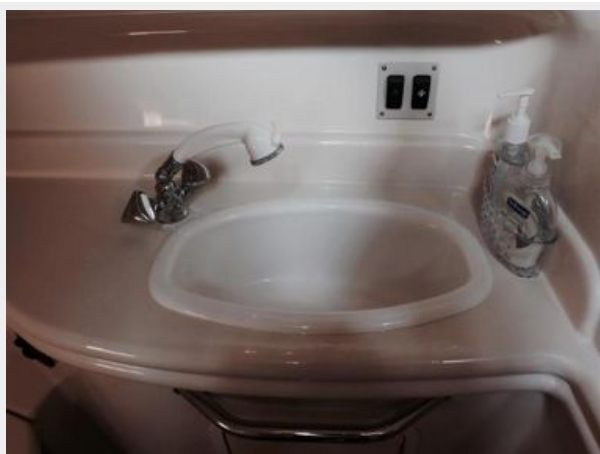


Head faucet + shower head combination



Mid-stateroom conversation area

Head sink



Mid-stateroom view w/flatscreen t.v.



Electrical panel



Electrical panel close-up



View of aft



Mid-stateroom + flatscreen t.v.



Mid-stateroom conversation area w/privacy curtain



Mid-stateroom conversation area w/privacy curtain interior view



Dinette



Salon sofa/berth



Salon sofa/berth converted to bed



Salon storage view



V-Berth



V-Berth closet storage



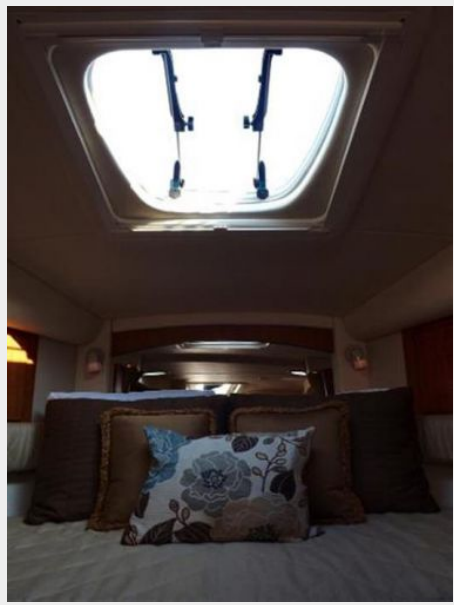
V-Berth



V-Berth with side storage



V-Berth + hatch



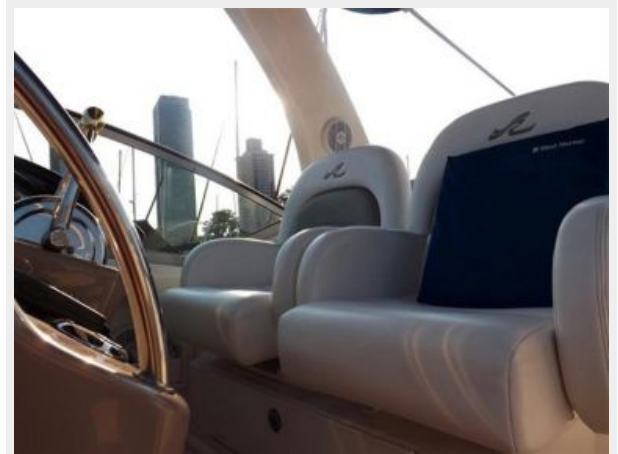
V-Berth w/privacy curtains



V-Berth w/privacy curtains interior view



Helm seating



Helm folded seating



Instrument panel



Instrumental panel close-up



Bow



View from bow



Windless + remote searchlight



View from bow



View from bow



Raymarine radar/GPS



Power windshield vent



Cockpit



Cockpit wet-bar



Cockpit sink



Transom storage



T-top extender



CONTACTS

Andrey Shestakov, leading yacht broker of the sales department of Shestakov Yacht Sales Inc. Shestakov Yacht Sales Inc., the official representative of the Miami/Fort Lauderdale FL headquarters.

Contact details

Email: andrey@shestakovyachtsales.com

Web: shestakovyachtsales.com/en/

Telephones

USA: +1(954)274-4435

Office hours

Monday – Saturday: **9:00 - 21:00** EDT

Sunday: **closed**

Address



Harbour Towne Marina, 850 NE 3rd St,
STE 213, Dania, FL 33004