

HOME JAMES — BROWARD



Судостроитель: BROWARD

Год постройки: 2000

Модель: Моторная яхта

Цена: ЦЕНА ЯХТЫ ПО ЗАПРОСУ

Местонахождение: United States

Длина общая: 100' 0" (30.48m)

Ширина: 20' 6" (6.25m)

Мин. осадка: 6' 0" (1.83m)

Макс. осадка: 6' 0" (1.83m)

Крейс. скорость: 18 Kts. (21 MPH)

Макс. скорость: 22 Kts. (25 MPH)

Купить Home James — BROWARD а также выбрать подходящую вам яхту из нашего каталога яхт вам поможет опытный яхтенный брокер Андрей Шестаков. На сегодняшний день компания Shestakov Yacht Sales Inc. имеет большое количество яхт в собственном списке продаж, а также тесно сотрудничает со всеми крупными яхтенными производителями по всему миру.

Для того чтобы купить яхту Home James — BROWARD а также проконсультироваться по любому вопросу связанному с покупкой, продажей, чартером яхт позвоните по телефону **+7(918)465-66-44**.

ОГЛАВЛЕНИЕ

ОГЛАВЛЕНИЕ	2
ХАРАКТЕРИСТИКИ	4
Обзор	4
Основная информация	4
Размеры	4
Скорость, вместимость и масса	5
Размещение	5
Корпус и палуба	5
Информация о двигателе	5
ПОДРОБНОЕ ОПИСАНИЕ	6
Recent work	6
Highlights	7
Salon	8
Galley	8
VIP Stateroom 1	8
Master Stateroom	9
Accommodations	9
Pilothouse	9
Fly Bridge	9
Aft Deck	10
Foredeck	10
Transom	10
Mechanical	10
Tenders	11
Summary	11
Disclosure note	11
Исключения	11
Отказ от ответственности	12

ФОТОГРАФИИ	13
КОНТАКТЫ	28
Контактная информация	28
Телефоны	28
Время работы	28
Адрес	28

ХАРАКТЕРИСТИКИ

Обзор

Broward Yachts are well known for sturdily built aluminum hulls, spacious areas for entertaining, generous staterooms and comfortable accommodations throughout. "HOME JAMES" is an excellent example of a one-owner, never chartered Broward Raised Pilothouse that has been tastefully designed with understated elegance, exhibiting a sense of comfort and luxury. "Home James" spent time seasonally in the Great Lakes and in Florida. The maintenance and care given to this vessel is evident of knowledgeable owners.

Please make sure to view all photos plus a short video of Home James, including running footage.

Основная информация

Тип судна: Моторная яхта	Модельный год: 2000
Год постройки: 2000	Год обновления: 2016
Вид обновления: Mechanical, Structural	Страна: United States
Верх: Bimini Top	Открытая палуба мостика: Да

Размеры

Длина общая: 100' 0" (30.48m)	Ширина: 20' 6" (6.25m)
Мин. осадка: 6' 0" (1.83m)	Макс. осадка: 6' 0" (1.83m)
Трапы: 20' 0" (6.10m)	

Скорость, вместимость и масса

Крейс. скорость: 18 Kts. (21 MPH)	Крейсерская скорость поворота: 1800 Kts.
Макс. скорость: 22 Kts. (25 MPH)	Макс. скорость поворота: 2350 Kts.
Водоизмещение: 140000 Pounds	Вместимость воды: 750 Gallons
Вместимость сточного бака: 500 Gallons	Объем топливного бака: 7500 Gallons

Размещение

Всего кают: 4	Всего коек: 6
Спальные места: 8	Всего ком. состава: 4
Каюта капитана: Да	Каюты экипажа: 2
Койки экипажа: 3	Спальных мест экипажа: 3
Комм. состав экипажа: 1	

Корпус и палуба

Материал корпуса: Aluminum	Материал палубы: Aluminum
Комплектация корпуса: Semi-Displacement	Цвет корпуса: White
	Отделка корпуса: Aluminum

Информация о двигателе

Двигатели: 2	Производитель: Caterpillar
Модель: 3412	Тип двигателя: Inboard
Тип топлива: Diesel	

ПОДРОБНОЕ ОПИСАНИЕ

Recent work

RECENT WORK

Feb 2016: Just got out of the yard with mechanical and structural capital improvements, including:

- New 8000 Series Garmin Electronics on both helms (GPS, AIS, Auto Pilot, engine data info, dual radars, dual sonars and cameras)
- Total Driveline Alignment (new bearings, new seats, aligned shafts, dyno-balanced props)
- Application to all bilges and voids with an epoxy-polymer anti-corrosive coating with 10 year warranty
- Dripless Shaft Seal installations
- New appliances (Galley side by side and three U-line combo units, plus washer/dryer)
- Cooling water and Sea Chest overhaul (strainers overhauled and rebuilt)
- Hydraulic heat exchanger reconditioning
- HVAC Reconditioning
- Crew quarters interior refit with new flooring, new wall paper
- Steering system Redundancy
- Anchor Windlass Redundancy
- Bow Thruster Redundancy
- Naiad Stabilizers serviced
- Interior lighting updated to LED
- Generators fully serviced
- plus much, much more

The sellers have invested heavily in structural, electrical, electronic and mechanical upgrades, far surpassing the original build specification. M/Y Home James is the best offering on the market and available from the original single-owner family. Vessel has never been chartered.

Recently having done (April 2015) a host of maintenance and services, including:

- Complete bottom job – with dynamic balancing of props, dialing in shafts, replacing all zincs, Prop-Speed on running gear and fresh coats of bottom paint.
- New Headliners throughout
- Both engines and both generators fully serviced – replace hoses, clamps, filters, etc.
- Air Conditioning (Upgraded 3-phase soft start compressors installed 5/2014) serviced

- Full Compound, Buff, Wax and Detail – topsides and hull
- Dinghy serviced, installed new VHF and antenna, new sounder and transducer, outboard serviced,
- ACR Searchlight serviced
- Serviced bow thruster
- Batteries replaced where needed (5 total)

Sparing no expense to have Home James turn-key ready for the new owners, the most experienced yachtsman would be pleased to find in this vessel in above average condition and see the true value it represents.

Highlights

HIGHLIGHTS

Broward Yachts are well known for sturdily built aluminum hulls, spacious areas for entertaining, generous staterooms and comfortable accommodations throughout. HOME JAMES is an excellent example of a one-owner, never chartered Broward Raised Pilothouse that has been tastefully designed with understated elegance, presenting a feeling of being at home. The owner's enjoyed Home James seasonally in the Great Lakes and in Florida alike. The maintenance and care given to this vessel is evident of loving owners.

From the voluminous master suite amidships with his/her heads and walk-thru shower, the VIP forward with seating area and private head, plus 2 more guest staterooms with ensuite heads, to entertaining on the dynamic flybridge with wrap around seating, to the huge expanse of a salon measuring 18' x 35', there is plenty of room to spread out and enjoy. Then hungry owners and guests can refresh and dine in the sizeable country style kitchen with a large island and breakfast table or Al Fresco in the twin table aft deck seating area. Home James is a fine example of open, airy spaces to enjoy the yachting lifestyle.

Running this mighty vessel are equally powerful and reliable Caterpillar 3412s with 1350HP each. Easy access to the engine room is via the transom door where the crew accommodations are also located: 1 private Captain's quarter and 2 berths for crew, plus full head with shower, desk, fridge and laundry.

For those seeking a mega-yacht that could offer the desirable advantages for long range cruising without giving up speed, Home James features a 2,000 mile range at slower speeds but boasts speeds of up to 22 knots at wide open throttle and a comfortable cruise of 18 knots. The versatility of speed and range is no longer something to compromise when considering Home James.

Featuring twin 40kW Northern Lights generators, a 17' Key West Skiff dingy hoisted by a Marquipt davit, large aft deck seating and flybridge access, large screen LED TV in salon and

wood floors throughout main deck, a flybridge wet-bar with fridge, sink and storage, plus excellent storage throughout the vessel for long trips or as the name implies - Home James is a true live-aboard.

Salon

SALON

To really appreciate this vessel, please be sure to view all photo and enjoy a short video of Home James, including running footage.

Either entering via the wing doors or the aft deck entryway – the surprising size of the full beam salon with its ample and open-layout style welcomes all that enter Home James. Beautiful laminate hardwood floors flow throughout accented décor of neutral colors with touches of nautical accents adorn this fabulous area for entertaining, unwinding or watching TV. Twin sectional settees and a dining set provide plentiful seating. The large screen LED HDTV is hung above the granite countertop wet-bar with sink. Under-counter of the bar is bottle storage and an under-counter fridge with ice-maker. More cabinet storage is available under the salon windows.

Galley

Continuing forward to starboard is the guest/day head next to the starboard wing doors. This corridor leads to the impressive galley with large center island and country style kitchen dinette with seating for up to 8. The counter tops are a durable solid surface in a pleasing soft tone. This galley is meant for long trips featuring ample storage under counter in the island as well with drawers and lockers throughout. Four additional large storage lockers are accessible behind the dinette. Appliances include:

- Double-door full size refrigerator/freezer (25")
- Ceramic-top range
- Overhead microwave with vent
- Trash compactor
- Under-counter Sub Zero additional freezer

VIP Stateroom 1

Forward of the galley and entry to starboard are steps down to an impressive, private and comfortable VIP stateroom. Here the owner's guests will enjoy a private ensuite head with tub and shower. The adjoining dressing/sitting area offers a slim-line dresser with an upholstered settee, cedar-lined hanging closet. The VIP queen centerline berth has dual reading lights and

an overhead hatch and additional storage under the berth. This stateroom is a quiet oasis for the owner's VIP guest aboard Home James.

From the portside of the wet-bar in the salon, leads down to steps to the Master stateroom and 2 additional guest staterooms.

In the landing lobby below deck is a stacked Washer and Dryer with pantry for storage.

Master Stateroom

An amazing amidships full beam Master with King-sized berth which offers generous storage underneath. Nightstands with reading lights and slim-line dressers adorning port and starboard to make his and her cedar-lined walk in closets. A TV cabinet with entertainment center is centered forward of the berth for comfortable viewing.

Spacious, luxurious and opulent is the Master Head on Home James. With his and her entries, head and vanities adjoined by a central walk-thru marble shower with glass doors, owners will experience spa-like comforts.

Accommodations

STARBOARD GUEST STATEROOM AND HEAD

Spacious, luxurious and opulent is the Master Head on Home James. With his and her entries, head and vanities adjoined by a central walk-thru marble shower with glass doors, owners will experience spa-like comforts.

PORTSIDE GUEST STATEROOM AND HEAD

Oversized twin berths, an ensuite head and with a large stand-up shower, hanging locker (closet) and dresser, provide generous accommodations for guests.

Pilothouse

Home James can be piloted from the flybridge or if there is foul weather, taking a few steps down from the flybridge or from the salon a few steps up is the raised pilothouse that features a captains table with settee and a full compliment of controls and electronics at the helm. Visibility is enhanced with large forward windows and side windows.

Fly Bridge

Center-console helm platforms the navigation and electronic controls with a 3-person bench that doubles with a bar back/wet-bar with sink, icemaker/fridge and storage. Entertaining is the highlight of this voluminous flybridge. Port and Starboard seating with sun lounges offer guests plenty of places to relax and sun bathe. Aft flybridge is spiral staircase access to the aft deck, the 17' Key West Skiff (dinghy) w/ Yamaha OB hoisted by the heavy-duty Marquipt davit.

Aft Deck

Is accessed by either the companionway doors either port or starboard side, or via the locker stairs to transom/swim platform that leads to engine room and crew quarters. Dual oversized tables accent a bench style large wrap-around settee. The wet-bar with sink and mini-fridge is located to port-side. Entry into the salon is via a sliding door.

Foredeck

Port and starboard wing doors are located amid-ship – and lead to the foredeck. The bow anchor is hydraulically powered by a 3500 lb. warping anchor windlass. Dual eight-foot deck boxes with shore power connection and walk in bosun locker round out the well thought-out foredeck.

Transom

- Port and Starboard storage lockers
- Glendenning-powered retractable shore power cable
- Access to Engine room and Crew quarters
- Stainless steel hoop rails
- Oversized swim ladder

Mechanical

- Twin Diesel Caterpillar 3412 direct drive 1350HP each, 4900 hours
- ZF transmissions with 2.5:1 reduction gears, Hynautic controls
- Twin 40kW Northern Lights Generators
- Racor Fuel Filters for main engines/generators
- American Hydraulics – Bow thruster and Anchor Windlass
- Village Watermaker
- Air Compressor
- Fuel Management Manifold with transfer pump for four fuel tanks

- Fresh water system w/filters and UV purification chamber
- Holding Tank with macerating pump-out
- Twin chilled water air-conditioning compressors – raw/chilled water circulating pumps
- Twin AC Main electrical distribution panels
- Engine room exhaust fans
- Engine room induction towers
- Oil change manifold system (mains and generator)
- Main Engines and Generator Start/Stop panels with gauges
- Sound Proofing
- Fire proof engine room door with safety port glass
- Fire suppression system and Fire alarm
- GFIC Outlets

Tenders

- 2003 Key West 17' Skiff with 90hp Yamaha outboard
 - 90 HP Yamaha outboard fully serviced, new battery (April 2015)
- Newly installed (April 2015)
 - Norcross Hawkeye Sounder,
 - Standard Horizon Eclipse VHF with new Shakespeare VHF antenna
 - Igloo 94 qt. marine cooler with cooler cushion
- Hoisted on flybridge aft deck by Marquipt davit

Summary

Having recently come out of the shipyard with a host of items repaired, replaced, serviced and dialed in for the next owners, Home James exemplifies an opportunity for a quality yacht with abundant accommodations, it offers a canvas upon which new owners can make it their own. Very easy to show in Aventura, Florida, Home James is ready for the next adventure in yachting!

Disclosure note

Electronics and entertainment systems on Home James are considerably outdated and some equipment may not be operational. Current owners focus was preparing Home James to be sea-worthy and ready for sale. Mostly addressing the critical matters of the mechanical, hull and ships systems. All interested parties should be made aware that navigational and entertainment equipment will most likely need to be replaced.

Исключения

При продаже яхты исключаются личные вещи владельца.

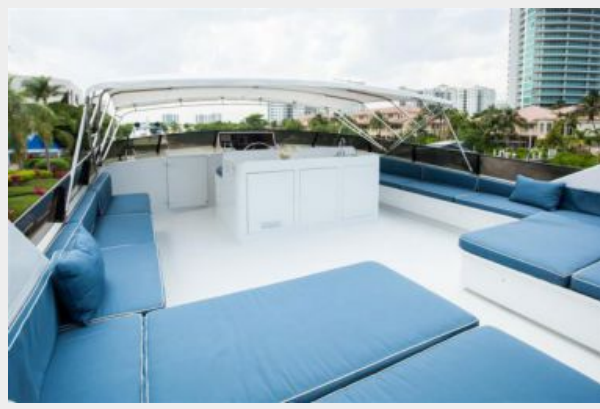
Отказ от ответственности

Компания предоставляет описание судна или яхты добросовестно, но не может гарантировать точность этой информации, а также не ручается за техническое состояние. Покупатель должен проинструктировать своих агентов или оценщиков исследовать представленную информацию более подробно, по собственному желанию. Продажа судна или яхты, изменение цены или снятие с продажи будет происходить без предварительного уведомления.

ФОТОГРАФИИ

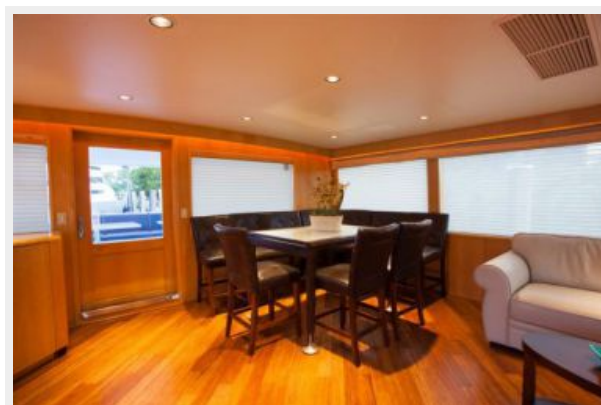


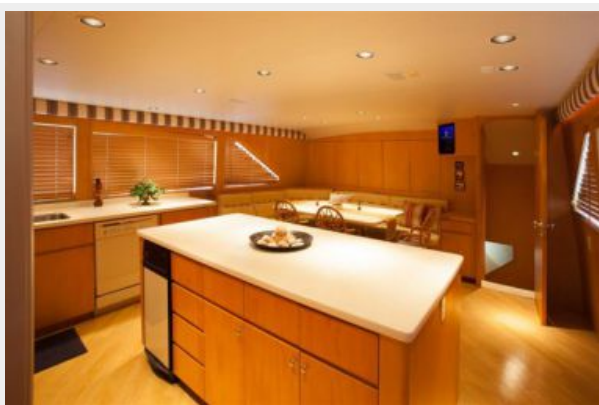


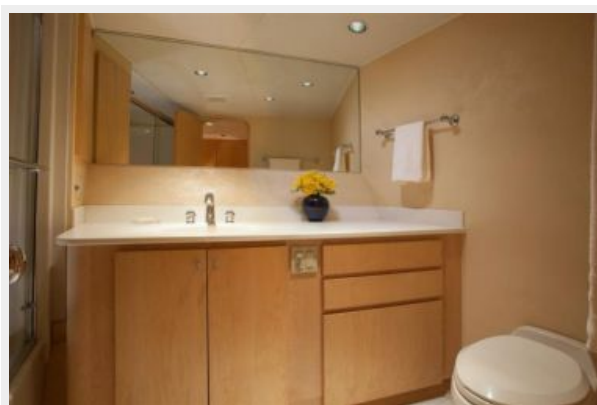
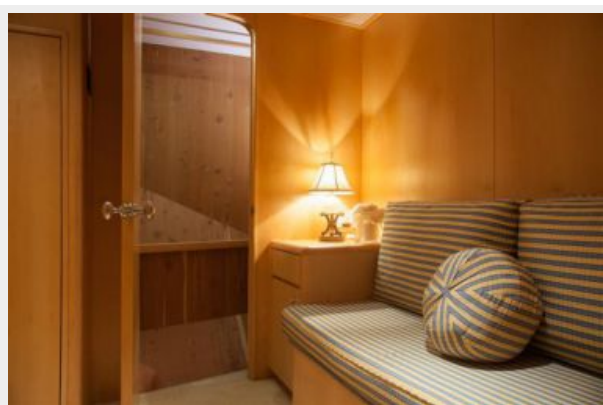
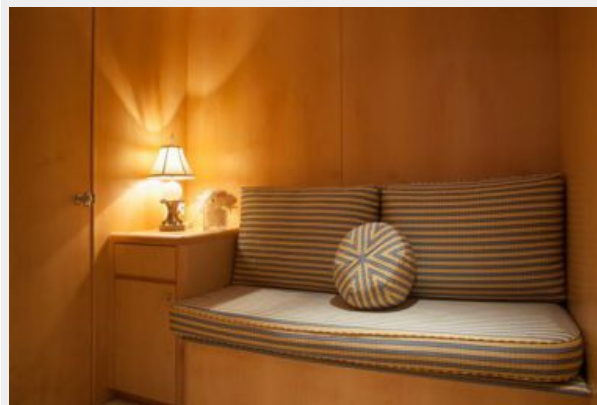
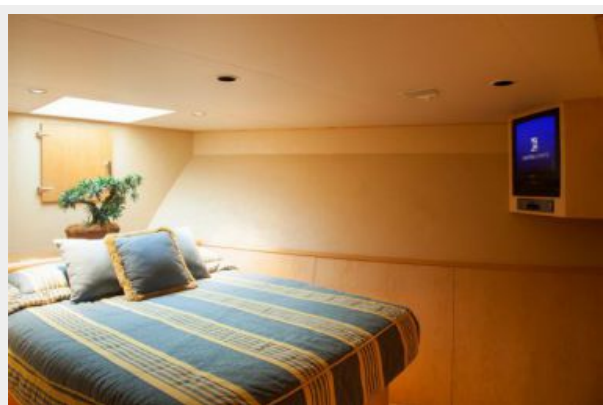
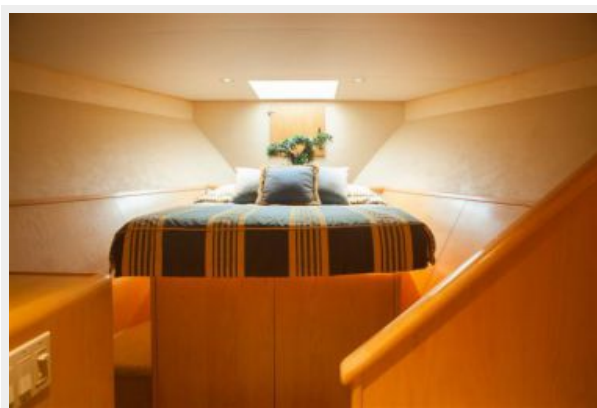


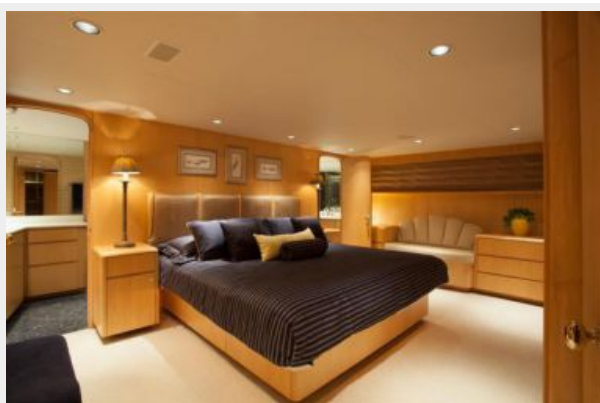


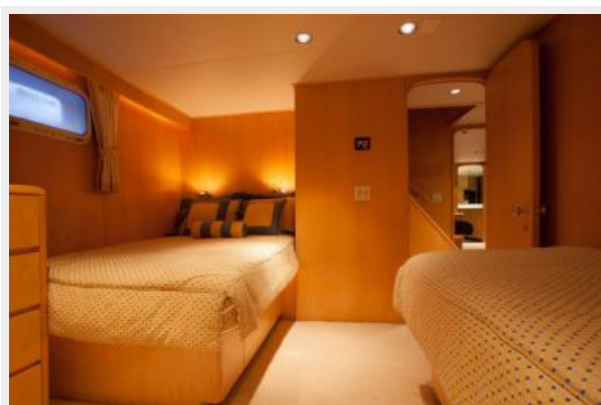
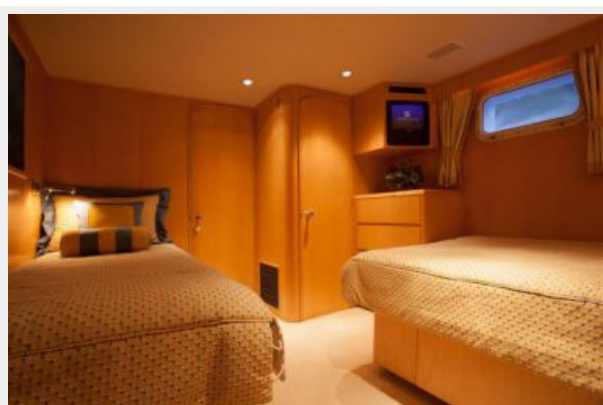
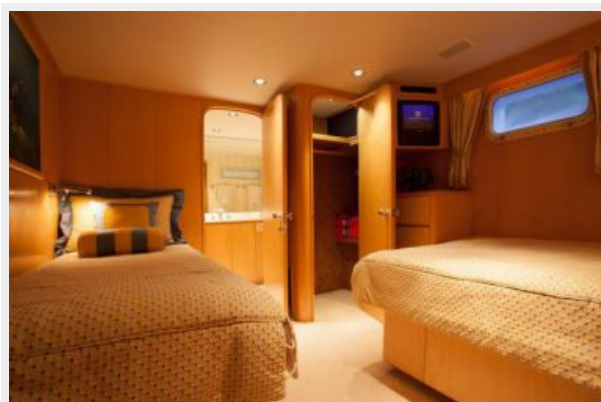






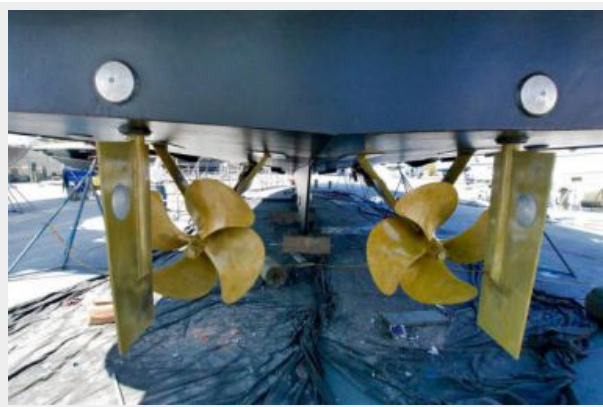


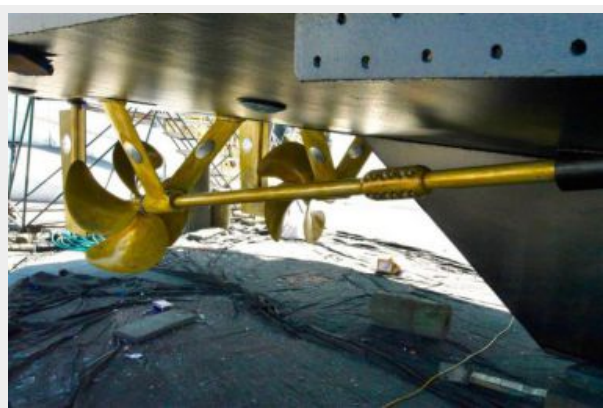


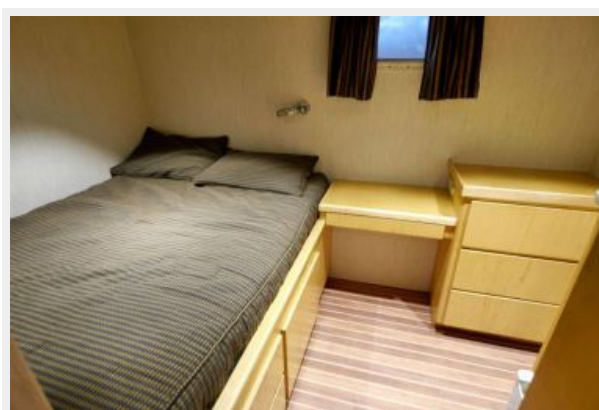












КОНТАКТЫ

Андрей Шестаков (Andrey Shestakov) – ведущий яхтенный брокер отдела продаж яхт и судов компании Shestakov Yacht Sales Inc. Официальный представитель Shestakov Yacht Sales Inc. для русскоговорящих клиентов в центральном офисе компании в Майами/Форт Лодердейл/Флорида/США.

Контактная информация

Email: andrey@shestakovyachtsales.com

Web: shestakovyachtsales.com

Телефоны

Краснодарский край: **+7(918)465-66-44**

США, Майами, Флорида: **+1(954)274-4435**

Время работы

Понедельник – Суббота: **9:00 - 21:00**
EDT

Воскресенье: **Закрито**

Адрес



Harbour Towne Marina, 850 NE 3rd St,
STE 213, Dania, FL 33004