

PANACEA — PERSHING



Судостроитель: PERSHING

Год постройки: 2015

Модель: Моторная яхта

Цена: **ЦЕНА ЯХТЫ ПО ЗАПРОСУ**

Местонахождение: United States

Длина общая: 82' 0" (24.99m)

Ширина: 18' 0" (5.49m)

Макс. осадка: 4' 7" (1.40m)

Крейс. скорость: 40 Kts. (46 MPH)

Макс. скорость: 45 Kts. (52 MPH)

Купить Panacea — PERSHING а также выбрать подходящую вам яхту из нашего каталога яхт вам поможет опытный яхтенный брокер Андрей Шестаков. На сегодняшний день компания Shestakov Yacht Sales Inc. имеет большое количество яхт в собственном списке продаж, а также тесно сотрудничает со всеми крупными яхтенными производителями по всему миру.

Для того чтобы купить яхту Panacea — PERSHING а также проконсультироваться по любому вопросу связанному с покупкой, продажей, чартером яхт позвоните по телефону **+7(918)465-66-44**.

ОГЛАВЛЕНИЕ

ОГЛАВЛЕНИЕ	2
ХАРАКТЕРИСТИКИ	3
Основная информация	3
Размеры	3
Скорость, вместимость и масса	3
Размещение	3
Корпус и палуба	4
Информация о двигателе	4
ПОДРОБНОЕ ОПИСАНИЕ	5
Features	5
Исключения	10
Отказ от ответственности	10
ФОТОГРАФИИ	11
КОНТАКТЫ	21
Контактная информация	21
Телефоны	21
Время работы	21
Адрес	21

ХАРАКТЕРИСТИКИ

Основная информация

Тип судна: Моторная яхта

Модельный год: 2015

Год постройки: 2015

Страна: United States

Открытая палуба мостика: Да

Размеры

Длина общая: 82' 0" (24.99m)

Ширина: 18' 0" (5.49m)

Макс. осадка: 4' 7" (1.40m)

Скорость, вместимость и масса

Крейс. скорость: 40 Kts. (46 MPH)

Дальность на крейсерской скорости:
310

Макс. скорость: 45 Kts. (52 MPH)

Водоизмещение: 120042 Pounds

Вместимость воды: 343 Gallons

Объем топливного бака: 1572 Gallons

Размещение

Всего кают: 3

Всего коек: 3

Спальные места: 6

Всего ком. состава: 3

Каюта капитана: Да

Каюты экипажа: 2

Койки экипажа: 3

Спальных мест экипажа: 3

Комм. состав экипажа: 1

Корпус и палуба

Материал корпуса: Fiberglass Sandwich **Цвет корпуса:** Champagne Pearl

Информация о двигателе

Двигатели: 2

Производитель: MTU

Модель: TMTU 16V 2000 M93

Тип двигателя: Inboard

Тип топлива: Diesel

ПОДРОБНОЕ ОПИСАНИЕ

Features

Pershing 82 Description

NEW Pershing 82, a contemporary reinterpretation of its successful predecessor the Pershing 80, has a sleeker more aggressive design with new wider lateral windows which open up, making the interior cabin even brighter. Following the success of the Pershing 74, the Pershing 82 features a sun-deck with a retractable platform giving the yacht a slender look and allowing the Owner and guests to enjoy unparalleled heights.

The NEW Pershing 82' is 24.97 meters long and has a maximum width of 5.50m with 3 comfortable guest cabins and two crew cabins with three beds.

A large retractable door divides the cockpit from the large salon with maximum space flexibility and refined elegance.

Below deck, space is typically divided for a mega yacht, for example the galley is separate from the salon and it combines with the crew area to allow greater privacy for the guests and the ship owner. The crew area, which is made of two cabins (one for the captain and one for crew) as well as a laundry and a bathroom, can also be accessed from the kitchen.

Besides the innovative solutions designed for the external structure and for the design below deck, the new Pershing 82' was developed to ensure maximum performance at sea: two powerful coupled MTU 16 V M93 of 2435 mhp (1792 kW) with Searex SR140S surface propellers of ZF that guarantee a maximum speed of 45 knots and a cruising speed of 40 knots and high levels of comfort, besides the autonomy of more than 300 nautical miles. The Autotrim of ZF contributes to the high technological level of this vessel. It is a system that is capable of optimizing performance at any speed automatically.

The new Pershing is an icon of modern design and outstanding performance! **EXTRA ACCESSORIES** Standard America 12/13 Pershing 82 Mooring cleats, side, retractable (couple) on the bathing platform Hydraulic stern thruster Separate washer & dryer Safety equipment for 16 people (2 life rafts, 16 life jackets) Electric blackout curtains in guest cabins (not crew cabins) Salon TV SAT KVHM7 USA antenna with 2 decoder USA Pulpit: side opening for stbd & port handrail Aft deck camera at center underside of fly overhang Second helm station & furniture / seat on the sun deck (Upper driving station) Sliding door in master head Chart box cover Decodes for US Sat TV in all the cabins & in the crew dinette Outside Painting: Champagne Pearl with superstructure in contrast D749&D760, without stripes. Domes & antennas in mat black Dimmer for internal lighting (each room) Ipod docking station in all guest cabins (crew cabins excluded) Extra UE documents Cradle & lifting system for tender Electrically controlled big rectangular double light searchlight Electric roll fabric curtains in the VIP cabin, lower dinette & guest cabins port & starboard Three cabin layout with dinette in I.deck Sycamore furniture (not Standard) Galley & crew furniture lacquered white Ral 9001 shiny 100 gloss Galley Top:

TARABELLI MARMI DIAMANTE New salon furniture in front of black glass door with double TV lift Installed no. 2 ice maker (producing small ice cubes instead of STD) Carpet for cabins Floor to heaven 356 artsilk [VIP and Guest cabins carpet: Floor To Heaven 356 Artsilk + Master carpet Floor To Heaven 356 Artsilk]

Lisage curtains in cabins diff C&C Ciondolino 161818 sabbia [master Lisage Curtains C&C Ciondolino 161818 Sabbia + Vip and Guest cabins: Lisage Curtains C&C Ciondolino 161818 Sabbia]

Doors in wood, not saddle upholstery

Mosaic in vip, guest and crew shower diff. I frammenti mix white/sand/grey [Crew shower wall: MOSAIC I frammenti mix white /sand/ grey + Vip Guest and showers mosaic: I Frammenti mix White/sand/grey]

Mosaic in master shower diff from std: Bisazza Decori, andromeda oro. seduta doccia in Kerlite Sand [Master shower mosaic: Bisazza Decori, Andromeda Oro. Seat and floor in laminam avorio]

Full Raymarine equipment "GS series" diff from std.

Non sliding painting for garage floor [antiskid on garage and platform floor]

Storage under lobby [created storages on bilges where possible]

Wine cellar in salon [wine cellar next to ice-maker instead of TV std]

Bottle rack in salon, leather basket under the main salon sofa to storage bottles

Changed insulation cover of the hangar with aluminium one

Extra hanging cabinet above crew galley sofa

Protea Air cleaner in the galley

Lower dinette sofa with wood structure covered with Frau leather SC53

Installed second set of trim and trim tabs controls, side thrusters controls, on the left support

Removed cutlery rack and made storage

Removed sliding part of main salon sofa

Galley Back Splash and galley base in HOMAPAL 461

Freezer in captain's cabin (under the captain's bed)

Rubber rug inside the furniture [all storages waded with rubber]

Crew sink Top: marble Tardelli Marmi Diamante

Ottoman for lower dinette

Increased the thickness (+1,5 cm) of the beauty line

Installed the lifebuoy on the hatch under the aft sunpad

Hangar lighting: Cool white and powerful lights

Rubber/plastic rug for outside furniture

Shelves in crew wardrobe

Installed barometric station on galley stair wall higher

Shampoo holder in crew shower

Wardrobe in lower dinette without door, with shelves plus printer predisposition

Cover for side storages on helm station

Shampoo holder in master shower

Salon rug

Rug for Lower dinette

Lock for galley fridge

Main salon chairs: chrome supports with leather or tissue cover. Two of them have armrests

Additional internal sockets 110V

Master bathroom sink - diff. from std

Sink in vip and guest cabins - diff from std

Faucets

Storage tray in bathrooms [partitioning all bathrooms cabinets]

Aft external shower with hose reel

Converter 120-230V and shuko sockets in all rooms [Schuko sockets + converter]

Grating in teak in locker [Teak floor in the bathing platform storage]

EXTERNAL UPHOLSTERY FIXING DIFF FROM STD

Glass holder in dashboard in main helm

Fumè cover for electric panel [cover for electric panel in fumé glass]

Helmseat pilot back rest diff than std

CCTV: thermic camera/dual professional Flir Pan/Tilt Zoom M626 [Flir, thermal camera / dual professional - Pan/Tilt/Zoom M626]

SUNSHADE AWNING WITH POLES FOR UPPER SUN DECK

Painted fiberglass table in dinette at bow [Bow table painted to match boat]

Pinlights on exterior sidewalks

Helm controls electrically slide forward

Hi-fi upgrade in the cockpit -diff. [Audio/video System for outside diff. from STD: 6 cockpit Sonance speakers with four lower and two in overhead on a single zone with separate amp for each pair of speakers Aft deck camera at centre underside of fly overhang Four speakers with separate zone]

HANDLES UPHOLSTERED WITH LEATHER

Floor in Master bathroom, Vip and Guest diff from std [Master, Vip and Guest bathroom floors: Kerlite Sand]

Galley and Crew floor in Kerlite Steel wit geometric pattern (SQUARED)

Galley/crew sofa: Giunone Sandrift 6045

Dashboard panel and wheel in carbon fibre

Removed std crew door (bow) [Changed door layout in the crew cabins moving the twin bed cabin door to the galley]

External upholstery cushions Alcantara outdoor

Audio/video B&O diff than std [All TVs B&O]

LED lights in warm white (3000k)

Upper salon table diff from std

Interface device for engine data control [Engine data interface device on sundeck plotter (and lpad as well)]

Waterproof covers for sun pads, outside sofas and tables [cover for outside cushions (same colour of alcantara)]

Galley table diff. from std [Galley openable Table with Kerlite steel top (visible in open position with teak border)]

Boat name in stainless steel letters

Holder for glasses and plates different from standard

Free standing sofa (next to sunpad) table and chairs

Change of owner ceiling for B & O TV

Ipad mini as per customer request

Custom fitting in guest cabin

Modification of port side cabinets in aft salon 2 shelves inside crew wardrobe in laminate

Upper salon fridge

Shelf over Captain's bed

Cockpit chairs – diff. std. 4

Harbour name in stainless steel letters (each letter) 1 11

Harbour name in stainless steel letters (each letter) 2 7

Xeno lights under bathing platform

Beach canopy (cabana)

Printer/scanner

Additional glasses

Weather station sensor

Installation of sky sat receiver - customer's supply

Cockpit table – diff.std

Leather upholstery for pilot seats

Water cable glendinning

Air cable glendinning

Carbon steering wheel in sundeck

Storage of beach cabana carabin poles

Propspeed to all metal parts and pass cocks

Assorted decorative cushions

Missoni bed covers - diff.

Second smaller TV furniture in salon

Air outlet in garage

Transport from Fano to Port of Departure

Transport from Port of Departure to Fort Lauderdale

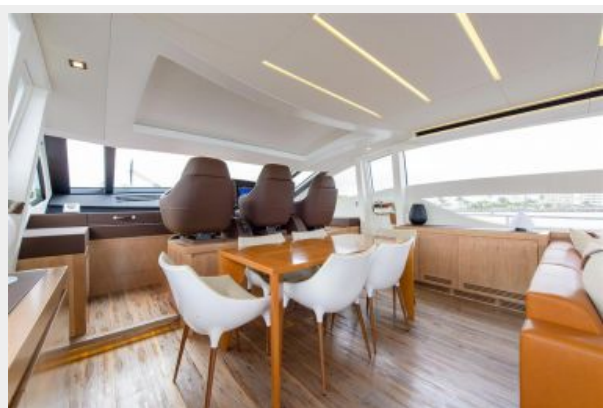
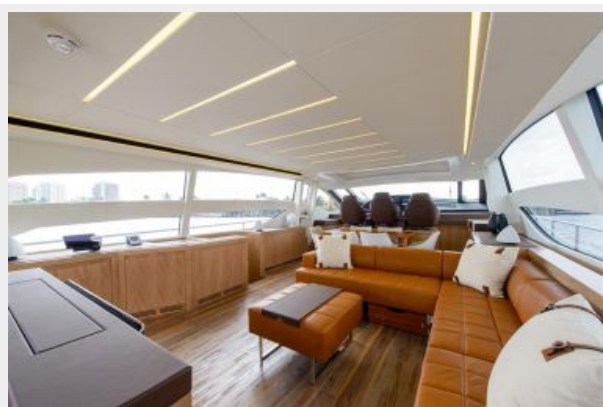
Исключения

При продаже яхты исключаются личные вещи владельца.

Отказ от ответственности

Компания предоставляет описание судна или яхты добросовестно, но не может гарантировать точность этой информации, а также не ручается за техническое состояние. Покупатель должен проинструктировать своих агентов или оценщиков исследовать представленную информацию более подробно, по собственному желанию. Продажа судна или яхты, изменение цены или снятие с продажи будет происходить без предварительного уведомления.

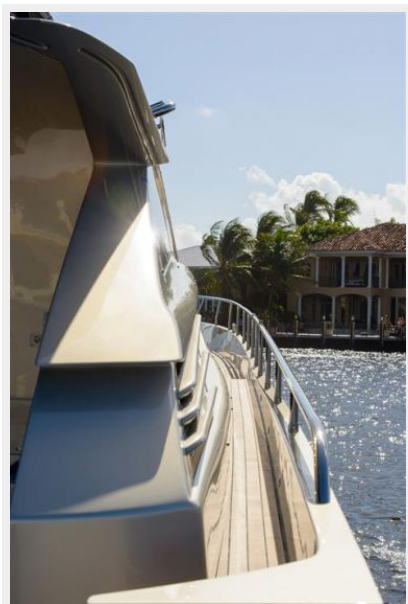
ФОТОГРАФИИ

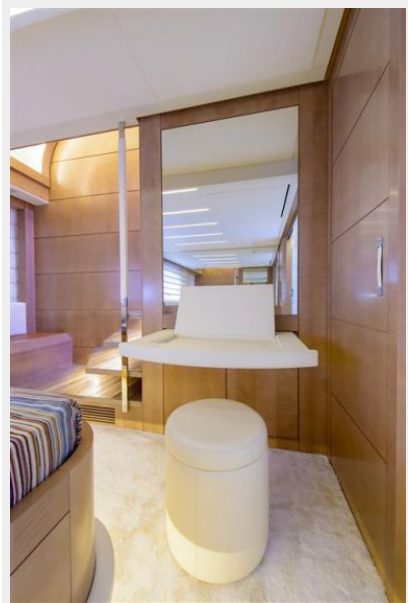




















КОНТАКТЫ

Андрей Шестаков (Andrey Shestakov) – ведущий яхтенный брокер отдела продаж яхт и судов компании Shestakov Yacht Sales Inc. Официальный представитель Shestakov Yacht Sales Inc. для русскоговорящих клиентов в центральном офисе компании в Майами/Форт Лодердейл/Флорида/США.

Контактная информация

Email: andrey@shestakovyachtsales.com

Web: shestakovyachtsales.com

Телефоны

Краснодарский край: **+7(918)465-66-44**

США, Майами, Флорида: **+1(954)274-4435**

Время работы

Понедельник – Суббота: **9:00 - 21:00**
EDT

Воскресенье: **Закрито**

Адрес



Harbour Towne Marina, 850 NE 3rd St,
STE 213, Dania, FL 33004