

WENDY LEAH — SEA RAY



Builder: SEA RAY

Year Built: 2003

Model: Cruiser

Price: PRICE ON APPLICATION

Location: United States

LOA: 48' 0" (14.63m)

Beam: 15' 3" (4.65m)

Min Draft: 3' 9" (1.14m)

Cruise Speed: 21 Kts. (24 MPH)

Max Speed: 29 Kts. (33 MPH)

Our experienced yacht broker, Andrey Shestakov, will help you choose and buy a yacht that best suits your needs **Wendy Leah — SEA RAY** from our catalogue. Presently, at Shestakov Yacht Sales Inc., we have a wide variety of yachts available on our sale's list. We also work in close contact with all the big yacht manufacturers from all over the world.

If you would like to buy a yacht **Wendy Leah — SEA RAY** or would like help answering any questions concerning purchasing, selling or chartering a yacht, please call **+1(954)274-4435**

TABLE OF CONTENTS

TABLE OF CONTENTS	2
SPECIFICATIONS	5
Overview	5
Basic Information	5
Dimensions	5
Speed, Capacities and Weight	5
Accommodations	5
Hull and Deck Information	6
Engine Information	6
DETAILED INFORMATION	7
Remarks	7
Overview	7
Salon	8
Galley and Dinette	8
Master Stateroom	9
Master Head	9
Port Guest Stateroom	9
Starboard Guest Stateroom	10
Guest Head	10
Flybridge	10
Electronics and Technical Equipment	11
Cockpit	11
Engine Room and Mechanical Equipment	12
Electrical Equipment	12
Deck and Hull	13
Exclusions	13
Exclusions	13
Disclaimer	13

PHOTOS	14
Salon	14
Salon Seating	14
Salon Seating	14
Salon TV	14
Galley	14
Dinette	14
Master Stateroom	15
Master Stateroom	15
Master Stateroom	15
Master TV	15
Master Head	15
Port Guest Stateroom	15
Port Guest Stateroom TV	16
Starboard Guest Stateroom	16
Guest Head	16
Laundry	16
Helm	16
Helm and Controls	16
Helm Seating	17
GPS	17
Radar	17
Flybridge Seating	17
Cockpit	17
Cockpit	17
Bow	18
Logo	18
Starboard Profile	18
Starboard Profile	18

Transom Profile	18
Transom	18
CONTACTS	19
Contact details	19
Telephones	19
Office hours	19
Address	19

SPECIFICATIONS

Overview

Galati Yacht Sales has been committed to exceeding the expectations of its customers for more than 42 years, and we understand that purchasing a boat is a big decision. Our professional staff is here to assist you in every way – before, during and after the sale. Please feel free to contact us with any questions that you may have.

Basic Information

Category: Cruiser

Sub Category: Sedan Cruiser

Model Year: 2003

Year Built: 2003

Country: United States

Vessel Top: Hardtop

Fly Bridge: Yes

Cockpit: Yes

Dimensions

LOA: 48' 0" (14.63m)

Beam: 15' 3" (4.65m)

Min Draft: 3' 9" (1.14m)

Speed, Capacities and Weight

Cruise Speed: 21 Kts. (24 MPH)

Max Speed: 29 Kts. (33 MPH)

Displacement: 40400 Pounds

Water Capacity: 140 Gallons

Holding Tank: 68 Gallons

Fuel Capacity: 500 Gallons

Accommodations

Total Cabins: 3

Total Heads: 2

Hull and Deck Information

Hull Material: Fiberglass

Hull Configuration: Modified Deep Vee

Engine Information

Engines: 2

Manufacturer: Cummins

Model: QSM11

Engine Type: Inboard

Fuel Type: Diesel

DETAILED INFORMATION

Remarks

Wendy Leah just may be the finest 2003 480 Sedan Bridge to hit the market in a while. Impressive in every area from the flybridge to the engine room, she is the quintessential example of a fine, well-maintained yacht that has to be seen to be truly appreciated. Her current owners are experienced boaters and the vessel is also maintained by the most reputable management company in the area.

Overview

The 480 Sea Ray Sedan Bridge offers plenty of luxurious living space indoors in the well-appointed cabin, and outside on the spacious command bridge, easily accessed via a molded stairway. Wendy Leah will surely be your home away from home with 3 staterooms and 2 heads. Cabinetry has the cherry gloss finish with a neutral color scheme for the seating, wall, window coverings and carpeting. Carpet covers protect the cabin carpet. With a fiberglass hardtop, full enclosure and dedicated bridge air conditioning, the command bridge is the perfect place to entertain. Curved bench seating forwards of the helm gives guests a spectacular view while enjoying refreshments and entertainment using the stereo remote control.

The console is large enough to house a tremendous amount of instrumentation, including a digital LCD systems monitor, while two fully adjustable captain's chairs provide absolute comfort. The captain can pilot in total confidence, too. Technical features on the Sea Ray 480 Sedan Bridge are complete with a bow thruster, engine synchronizer, crossover fuel and charging system, 13.5 kW generator with sound box, Glendenning self-winding power cable with wireless remote, plus a complete Raymarine electronics package. There is exceptional visibility from the helm to see the bow, stern and all corners of the boat, affording easier docking.

The cockpit affords travelers easy movement throughout with molded steps to the bridge and foredeck, sliding door access to the cabin plus convenient transom door access to the swim platform.

The salon is extremely livable with an electric convertible sofa and an entertainment center equipped with a TV hooked to SAT TV receiver, Bose Lifestyle Stereo System and six-disc CD changer. The galley to starboard is also fully equipped with appliances and ample storage plus a dinette for four opposite the galley.

Going down the steps to the stateroom companionway, immediately to the portside is the VIP stateroom with queen berth and entry door to the guest head just forward. To the starboard side of the companionway is the guest stateroom which has L-shaped twin berths that also function as a couch with their backrest cushions. The starboard side stateroom also features a washer/dryer. All the way forward on the companionway is the master stateroom with centerline oversized berth

and ensuite head with enclosed shower.

Wendy Leah has been maintained by a dedicated owner who addresses maintenance and repair items on an ongoing basis in order to assure the comfort and safe passage of his family and friends.

Salon

A tinted glass lockable sliding door allows access from the cockpit to the salon. The salon features a comfortable sofa which converts to a bed with a touch of a button. The concealed entertainment system to starboard includes TV with SAT TV receiver, Bose Lifestyle and a six disc CD player.

- Tinted Lockable Sliding Door with Curtain
- Portside Seating, L-Shaped Sofa w/Electrically Operated Slide-Out Bed
- Barrel Chairs (2)
- TV, Sony 24 Inch
- KVH SAT TV and Receiver
- Bose Lifestyle System (LS35) with DVD/CD Player
- DVD/CD/VCR Player
- 6-Disc CD Changer
- Storage Cabinets
- Table, Dining/Cocktail (Movable, Hi-Lo, Folding Leaf) w/Cherry Wood Top
- Windows, Port and Starboard with Pleated Shades
- Carpet and Carpet Runner

Galley and Dinette

The galley is forward of the salon and to starboard. Opposite is the dinette.

- Countertop, Molded Fiberglass w/Granite-Colored Gel-Coat
- Sink, & Corian® Sink Cover
- Refrigerator, Under-Counter with Cherry Finish Cabinet Door
- Freezer, Under-Counter with Cherry Finish Cabinet Door
- Stove, Flush-Mount Three-Burner w/Stainless Steel Safety Rail
- Microwave/Convection Oven, Built-in and within Cabinet
- Coffeemaker, Built-in and within Cabinet
- Storage, Drawers w/Cutlery Insert
- Upper and Lower Cabinets w/Designated Plate, Glass & Bottle Storage
- Trash Receptacle w/Chute & Corian® Cover
- Dockside and Pressure Water System
- Carpet and Carpet Runner
- Seating for 4, Opposing Dinette w/Storage Below

- Table, Dinette w/Corian® Surface and Wood Trim

Master Stateroom

The master stateroom is fully forward with oversized island berth and ensuite head.

- Oversized Bed w/Innerspring Mattress and Storage Below
- Decorator Spread, Shams and Pillows
- Hanging Lockers (2), Cedar w/Lights and Mirrored Doors
- Mirrored Rope Locker Bulkhead
- Stereo TV and DVD Combo, 13" w/Remote
- Overhead Hatch with Shade and Screen
- Portlights (4), Fixed with Curtains
- Carpet and Carpet Runner

Master Head

This head had private access from the master stateroom and has a separate stall shower.

- Shower w/Seat, Adjustable Shower Wand and Circular Acrylic Door
- Head w/Fiberglass Settee Lid (VacuFlush®)
- Vanity w/Corian® Countertop, Sink, Grohe® Faucet and Storage Below
- Medicine Cabinets, Mirrored
- Upper Storage Cabinet
- Portlight, Opening with Privacy Cover
- Power Vent and AC
- Waste Tank Monitor
- Handrails, Stainless Steel

Port Guest Stateroom

- The port stateroom has private access to the guest head.
- Queen Bed w/Innerspring Mattress and Storage Below
- Decorator Spread, Shams and Pillows
- Hanging Locker, Cedar-Lined w/Light and Mirrored Door
- Storage Drawers
- Stereo TV and DVD Combo, 13" w/Remote
- Mirrors, Wall Accent
- Circular Skylight
- Reading Lights
- Portlights (2), Opening with Curtains

Starboard Guest Stateroom

Twin L-shaped berths also function as a couch with the backrest cushion. There is also a washer/dryer combo concealed in one of the cabinets.

- Berths, Twin L-shaped which also function as a Day Bed
- Drawer Storage Below
- Cabinets
- Mirrors, Wall Accent
- Circular Skylight
- Portlights (2), Opening with Curtains
- Washer/Dryer Combo

Guest Head

This head had private access from the port stateroom and access from the companionway.

- Shower w/Seat, Adju
- stable Shower Wand and Bi-fold Door
- Head w/Fiberglass Settee Lid (VacuFlush®)
- Vanity w/Corian® Countertop, Sink, and Storage Below
- Medicine Cabinet, Mirrored
- Upper Storage Cabinet, Mirrored
- Portlight, Opening with Privacy Cover
- Power Vent and AC
- Handrails, Stainless Steel

Flybridge

The bridge layout is Plan A with the control station located center bridge with dual helm chairs and guest seating forward. There is exceptional visibility from the helm to see the bow, stern and all corners of the boat, affording easier docking.

- Molded Bridge Access Steps w/Storage Compartment
- Hatch, Bridge Access
- Hardtop, Fiberglass
- Overhead Lighting with Dimmer
- Overhead Hatch with Shade
- Enclosure, Four Sided with U-Zips and Side Drop Curtains
- Dedicated Bridge Air, Reverse Cycle, 24K BTU
- Burl Panels, Backlit, with Instruments, Gauges, Electronics
- Custom Sea Ray Backlit Instrumentation w/Low Glare Blue Night Lighting
- Wheel, Wood-Accent, Tilt

- Seating, Helm (2) - Custom Euro-Style w/Flip-Up Thigh-Rise Bolsters, Armrests and
- Heavy-Duty Adjustable Pedestal with Covers
- Forward U-Shaped Seating w/Storage Below and Sun Pad Filler Cushion
- Table, Fiberglass with Beverage Holders
- Wet Bar with Trash Receptacle and Storage
- Refrigerator
- Stereo, AM/FM/CD with Bridge & Cockpit Remote Controls
- Carpet
- Grab Rails and Safety Rails, Stainless Steel
- Beverage Holders
- Courtesy Lights

Electronics and Technical Equipment

Control Station

- Engine Alarms - Oil, Water & Transmission Oil
- High-Water Alarms - Bilge & Cabin
- Compass, with Digital Readout
- Engines Synchronizer
- Emergency Engine Stop
- Emergency Start System for Engines
- Horns, Air (Concealed), Dual Trumpet
- Shift & Throttle Controls, Hynautic
- Bow Thruster Control
- Spotlight, Trim Tab and Windlass Remote Controls
- Rudder Angle Indicator
- Switches, Illuminated Weatherproof Rockers and Dimmer Control
- Systems Monitor, Digital LCD for Engine Diagnostics and Pump Monitoring
- Cummins Engine Monitors

Electronics

- GPS/Plotter, Raymarine RL 80 C
- Raymarine Pathfinder, RL80CRC
- Autopilot, Ray ST7001+
- Radar, Ray Open Array
- VHF Radio
- KVH 4 SAT TV

Cockpit

- Cabin Entry Door (Sliding & Lockable) w/Curtain

- Molded Deck Access Steps
- Self-Bailing Fiberglass Floor Liner
- Engine Service via Gas-Assisted Hatch
- Aft Bench Seating with Storage Under
- Aft Curtain
- Transom Live Baitwell System
- Transom Door
- Carpet
- Overhead and Courtesy Lighting
- Stereo Speakers and Remote Control
- Hot & Cold Cockpit Shower
- Rod Holders
- Storage, Side Panels

Engine Room and Mechanical Equipment

The engine room is accessed through a hatch in the cockpit.

- Gel-Coated Engine Room, Gray
- Insulation, 2" w/Loaded Vinyl Barrier
- Fire Suppression System, Automatic
- Bilge Pumps, Automatic
- Bilge Blowers, (2)
- Engines Synchronizer
- Racor Fuel Filters
- Crossover Fuel System
- Hydraulic Trim Tabs
- Engine Gauges
- Oil Changer System - Engines, Transmissions & Generator
- AC/Heat Zone-Controlled Reverse-Cycle System (New System for Forward Stateroom)
- Freshwater in Engine Room
- Pressure Water System w/Dual 12V Pumps
- Water Heater
- Holding Tank w/Dockside Pump-Out

Electrical Equipment

- AC and DC Distribution/Breaker Panels
- Generator, 13.5 kW Onan Diesel w/Sound Box – 555 hours
- Batteries, 8-D w/Boxes and for Genset (1)
- Battery Charger/Converter
- Transformer, Shore Power Isolation

- Inlet, TV Coax & Telephone w/Cords
- Isolators (2), Galvanic
- Shore Power, Cablemaster (Glendenning), 50 Amp w/75' Cord and Wireless Remote
- Central Vacuum System

Deck and Hull

- Windlass, Electric w/Foot Switches
- Anchor with Rope and Chain Rode and Storage Hatch
- Anchor Washdown
- Foredeck Sun Lounge
- Windshield, Tempered/Tinted Curved Glass
- Windshield Screen
- Windows, Deck Side w/Opening Vent Windows
- Bow, Deck, and Grab Rails, Stainless Steel
- Cleats and Deck Fill Plates, Stainless Steel
- Portlights, Stainless Steel (4 Fixed, 6 Opening)
- Storage, Transom Wall, for Fenders and Gear
- Fiberglass Swim Platform
- Swim Ladder, Concealed 3 Step Stainless Steel

Exclusions

Owner's personal property.

Exclusions

Owner's personal belongings.

Disclaimer

The Company offers the details of this vessel or yacht in good faith but cannot guarantee or warrant the accuracy of this information nor warrant the condition of the vessel. A buyer should instruct his representatives, agents, or his surveyors, to investigate such details as the buyer desires validated. This vessel or yacht is offered subject to prior sale, price change, or withdrawal without notice.

PHOTOS

Salon



Salon Seating



Salon Seating



Salon TV



Galley



Dinette



Master Stateroom



Master Stateroom



Master Stateroom



Master TV



Master Head



Port Guest Stateroom



Port Guest Stateroom TV



Starboard Guest Stateroom



Guest Head



Laundry



Helm



Helm and Controls



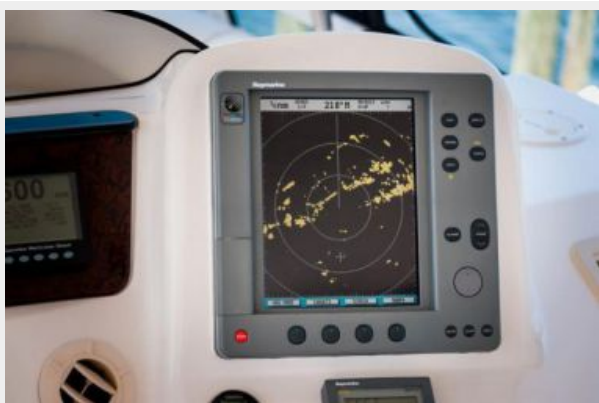
Helm Seating



GPS



Radar



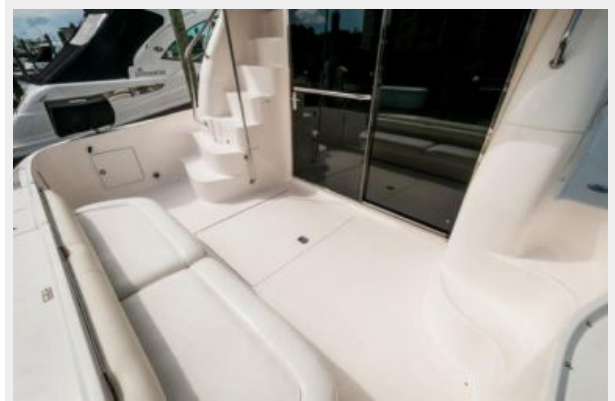
Flybridge Seating



Cockpit



Cockpit



Logo



Bow



Starboard Profile



Starboard Profile



Transom Profile



Transom



CONTACTS

Andrey Shestakov, leading yacht broker of the sales department of Shestakov Yacht Sales Inc. Shestakov Yacht Sales Inc., the official representative of the Miami/Fort Lauderdale FL headquarters.

Contact details

Email: andrey@shestakovyachtsales.com

Web: shestakovyachtsales.com/en/

Telephones

USA: +1(954)274-4435

Office hours

Monday – Saturday: **9:00 - 21:00** EDT

Sunday: **closed**

Address



Harbour Towne Marina, 850 NE 3rd St,
STE 213, Dania, FL 33004