

## GRATEFUL TWO — HATTERAS



**Судостроитель:** HATTERAS

**Год постройки:** 2006

**Модель:** Моторная яхта

**Цена:** **ЦЕНА ЯХТЫ ПО ЗАПРОСУ**

**Местонахождение:** United States

**Длина общая:** 80' 0" (24.38m)

**Ширина:** 21' 3" (6.48m)

**Макс. осадка:** 6' 0" (1.83m)

**Крейс. скорость:** 19 Kts. (22 MPH)

**Макс. скорость:** 23 Kts. (26 MPH)

Купить **GRATEFUL TWO — HATTERAS** а также выбрать подходящую вам яхту из нашего каталога яхт вам поможет опытный яхтенный брокер Андрей Шестаков. На сегодняшний день компания **Shestakov Yacht Sales Inc.** имеет большое количество яхт в собственном списке продаж, а также тесно сотрудничает со всеми крупными яхтенными производителями по всему миру.

Для того чтобы купить яхту **GRATEFUL TWO — HATTERAS** а также проконсультироваться по любому вопросу связанному с покупкой, продажей, чартером яхт позвоните по телефону **+7(918)465-66-44**.

# ОГЛАВЛЕНИЕ

ОГЛАВЛЕНИЕ	2
ХАРАКТЕРИСТИКИ	4
Основная информация	4
Размеры	4
Скорость, вместимость и масса	4
Размещение	4
Корпус и палуба	4
Информация о двигателе	5
ПОДРОБНОЕ ОПИСАНИЕ	6
Overview	6
Salon	6
Country Galley	7
Lower Forward Companionway	8
Master Stateroom	8
Master Head	9
Bow VIP Stateroom	10
Port Stateroom	11
Starboard Stateroom	11
Crew Quarters	12
Flybridge	13
Electronics	14
Exterior Finish and Construction	14
Hardware and Miscellaneous	15
Engine Compartment and Bilge	16
Electrical Equipment	17
Aft Deck/Sport Deck	18
Custom Additions	19
Upgrade/Service	20

Spares	21
Исключения	21
Отказ от ответственности	21
<b>ФОТОГРАФИИ</b>	<b>23</b>
Salon	23
Salon	23
Salon	23
Galley	23
Master Stateroom	23
Office	23
Master Bath	24
VIP Stateroom	24
Port Stateroom	24
Starboard Stateroom	24
Pilothouse	24
Pilothouse	24
Captain's Quarters	25
Engine Room	25
Flybridge	25
Flybridge	25
Flybridge Helm	25
Aft Deck	25
<b>КОНТАКТЫ</b>	<b>27</b>
Контактная информация	27
Телефоны	27
Время работы	27
Адрес	27

# ХАРАКТЕРИСТИКИ

## Основная информация

Тип судна: Моторная яхта

Модельный год: 2007

Год постройки: 2006

Страна: United States

Открытая палуба мостика: Да

## Размеры

Длина общая: 80' 0" (24.38m)

Ширина: 21' 3" (6.48m)

Макс. осадка: 6' 0" (1.83m)

## Скорость, вместимость и масса

Крейс. скорость: 19 Kts. (22 MPH)

Макс. скорость: 23 Kts. (26 MPH)

Водоизмещение: 190000 Pounds

Вместимость воды: 326 Gallons

Вместимость сточного бака: 388 Gallons Объем топливного бака: 2858 Gallons

## Размещение

Всего кают: 4

## Корпус и палуба

Материал корпуса: Fiberglass

## Информация о двигателе

---

**Двигатели:** 2

**Производитель:** Caterpillar

**Модель:** C32A

**Тип двигателя:** Inboard

**Тип топлива:** Diesel

# ПОДРОБНОЕ ОПИСАНИЕ

## Overview

Grateful Two is a 2007 model 80' Hatteras Motor Yacht with a 21'3" beam powered by twin Caterpillar C32A's @ 1800 HP. The vessel is in pristine condition and features a white hull color and custom welded stainless steel handrails. Cat ESC warranties are transferable. The interior cabinetry is African mahogany and features curved entry, sketch face doors throughout; just inside the salon, a sunken bar sits to starboard with a Samsung flat screen 50" TV for full viewing anywhere within the salon. Forward, a day head and fully equipped country galley with dining area. Unique to this vessel is a pop up lower helm, which easily hides away when not in use. Port and starboard entry doors provide easy access for line handling. Below decks, a full beam master stateroom with private head as well as a fully equipped office. Forward, the bow stateroom features a queen walk around berth and its own private head. The port stateroom features twin side by side berths providing maximum cruising accommodations, and a pullman is neatly hidden away on the inside bulkhead. A third stateroom provides criss/cross berths. Each stateroom has their own private head. Aft, the crew quarters provides a VIP stateroom, accommodating a queen walk around berth, as well as a second stateroom with over/unders with a single head.

## Salon

Curved sliding doors, framed in polished stainless steel, give way to a vast salon that benefits from a 21'3" beam. A sunken wet bar, with three barrel chairs reside just inside the salon door and for maximum entertaining a Samsung 50" Plasma TV is easily viewable from all areas. Custom furnishings include sectional sofa with storage underneath, three club chairs and a circular dining table with chairs.

- Circular dining table with six chairs
- Cabinet, forward bulkhead
- Custom decorative headliner treatment extending length of salon
- Finished wood bulkheads with high-gloss polyester finish in African mahogany
- Carpeting
- Whisperwall headliner
- Custom designed decorative wood valance with silhouettes in recessed pockets
- Welded and polished curved stainless-steel sliding door to aft deck
- Boston Acoustics 5.1 surround-sound speakers
- Sunken wet bar with bottle and glass storage, with three barrel chairs
- Entertainment center including 50" Samsung plasma TV with omni-directional antenna, AM/FM "surround sound" stereo receiver with DVD/CD player and one touch RF remote control system
- Carbon Monoxide detector
- Scotsman icemaker

- Fixed frameless windows with tinted safety glass
- Telephone outlet
- AC and CD light fixtures
- AC dimmable lights
- AC duplex outlets
- Custom sofa with storage
- Throw pillows
- Air conditioning dispersed through decorative valances, port and starboard
- Three chairs
- Coffee table
- End tables
- Buffet

## Country Galley

---

The country galley is fully functional and includes granite countertops and backsplashes for easy cleanup. For ease of maintenance, the flooring is Amtico. Appliances include a subzero full height refrigerator/freezer, full size oven, microwave convection oven, dishwasher, trash compactor, and four burner ceramic cooktop. To starboard, an electronic pop up lower helm station allows navigation in inclement weather. To port and starboard, there are panoramic doors leading to the outside for ease of line handling.

- Finished wood bulkheads with high-gloss polyester finish in genuine African mahogany
- Whisperwall headliner
- Fixed frameless windows with tinted safety glass
- Amtico floor
- Stone countertops and backsplash with stainless sinks and storage cabinets made of finished wood
- Sub-Zero model 685 upright AC refrigerator with freezer and icemaker
- AC four-burner ceramic cooktop with oven under counter
- Microwave/convection oven
- One-half hp continuous feed garbage disposal
- Telephone outlet
- AC and DC light fixtures
- AC dimmable lights
- AC duplex outlets
- Dishwasher
- Audio system control, LCD keypad and a pair of Boston Acoustics loudspeakers
- Genuine wood inserts on appliance fascia (except refrigerator) to match interior wood finish
- Trash compactor
- SMX HVAC compartment controlled
- Pop up lower helm station with electronics and helm chair
- Port and Starboard Panoramic doors

- Storage stools (5) 3 blue 2 brown

---

## Lower Forward Companionway

---

A single stairwell from the salon flows to the master and three guest quarters forward, while a separate accessible stairway is conveniently located off of the aft deck for crew and engine room access, for safety while underway. Forward, you'll enjoy a full size washer/dryer hidden behind arched sketch face doors. In lieu of carpet in the lower forward foyer, you'll find Amtico flooring.

- Amtico flooring
- Whisperwall headliner
- Padded panel wallcovering
- Portable fire extinguisher
- Washer/dryer
- DC light fixtures
- Lighted stairway to upper deck
- Arched sketch-faced passage doors with door stops to master and guest staterooms
- Cedar-lined linen storage locker

---

## Master Stateroom

---

The crown jewel of the 80 Motor Yacht is the full-width master stateroom with six oversized portlights, which allow natural light into the area. The combination of spaciousness, natural light and water-level view will stun anyone who enters the room. The master stateroom features a king-size berth with coil-spring mattress and cedar-lined storage beneath. Arched sketch face doorways and beautiful curved cabinetry dress the area. His and her cedar lined lockers as well as dressers and nightstands provide an abundance of storage and for entertaining a 32' LCD TV with surround sound finishes the area nicely. Unique to this vessel, is a customized fully equipped office located aft of the master stateroom, with a customized door that provides access to the engine room. Included is a 15" computer monitor built into the office.

- Whisperwall padded panel bulkheads
- Finished wood bulkheads with high-gloss polyester finish in genuine African mahogany
- Carpeting
- Whisperwall headliner
- Upholstered berth base
- Decorative wood valance with fixed Roman shade and duettes
- King-sized berth with upholstered headboard and cedar-lined storage underneath, accessed via pneumatic cylinders
- HMC coil spring mattress, spread, throw pillows, pillows, pillow shams, mattress pad and sheets
- Ventilating portlight with screen and five additional fixed portlights; each hatch is 16" x 28" open port 8" starboard



- Bowed-front nightstands with drawers
- Bowed-front built-in dressers, port and starboard
- AM/FM audio access with local DVD/CD changer and a one-touch master universal remote with RF control
- Boston Acoustics lounspeakers
- AC and DC light fixtures
- AC dimmable lights
- AC duplex outlets
- Telephone outlet
- 32" LCD TV and MATV inlet
- Arched sketch-faced interior passageway door to head
- Arched sketch-faced doors, with door stop, to companionway
- Full-length mirror
- Smoke detector
- DC low-level lights
- Safe
- Whisperwall padded panels behind berth
- Twin cedar-lined wardrobes with arched passage doors and automatic lights
- SMX HVAC compartment controlled
- Carbon monoxide detector
- Fully equipped office with door to engine room

## Master Head

---

The Master Head features Onyx countertops, backsplashes, floors with an oversized tiled shower with frameless shower door. A unique feature to this boat is that the vessel has a Head Hunter full waste treatment system, so you don't have to worry about pump outs, as the system treats the waste, turns it back into water then legally discharges, providing a self sufficient system with no heads directly to the outside with a fresh air induction system.

- Granite countertops, backsplashes and flooring
- Vinyl wallcovering
- Plexi mirror overhead
- Integral sink and storage cabinet
- Mirror
- Granite shower with frameless door
- Towel bar
- Headhunter freashwater toilet
- Recirculating fan
- AC and DC light fixtures
- AC duplex outlet
- Air conditioning vent
- Holding tank 3/4 full indicator light

- Headhunter treatment system
- Air induction fresh system

## Bow VIP Stateroom

---

The Bow is one of three guest staterooms forward each with their own private head. The VIP stateroom provides for a walk-around queen berth with cedar lined storage accessed by gas assisted bylinders. Comfort abounds with a custom built coil spring mattress. You'll find plenty of storage in the cedar lined lockers, port and starboard as well as hullside blanket lockers.

- Carpeting
- Whisperwall padded panels on hullside
- Whisperwall headliner
- Whisperwall padded bulkheads
- Queen-sized tapered berth with upholstered headboard and cedar-lined storage with drawer underneath accessed via pneumatic cylinders
- Upholstered berth base
- HMC coil spring mattress, spread, throw pillows, pillows, pillow shams, mattress pad and sheets
- Full-length mirror
- Nightstands, port and starboard
- Mirrored forward bulkhead
- Carbon monoxide detector
- Cedar-lined hanging locker with arched door and automatic light, port and starboard
- Screened overhead hatch with privacy cover
- AM/FM audio access with local DVD/CD changer and a one-touch master universal remote with rf control
- AC and DC light fixtures
- AC dimmable lights
- AC duplex outlets
- Access to port head
- 20" LCD TV with MATV outlet
- Overhead storage cabinets, port and starboard
- Smoke detector
- DC low-level lights under berth
- Steps to bow stateroom with DC low-level lights
- Telephone outlet
- Arched sketch-faced passage door
- Polk stereo speakers
- Fluted wood valance with air conditioning dispersed through soffits, port and starboard
- SMX HVAC compartment controlled
- Private head with granite countertops and floors with ventilating head and fresh air system

---

## Port Stateroom

---

The port stateroom features twin side by side berths, with a pullman berth hidden on the inboard bulkhead, for additional guest accommodations. Storage is provided by a cedar line hanging locker, and there is an access to it's own private head with large shower stall. All heads are ventilated with a fresh air system.

- Padded bulkheads
- Carpeting
- Whisperwall headliner
- Fluted wood valance with fixed Roman shade and duette with air conditioning dispersed through soffits
- Twin-sized berths with upholstered headboard and storage underneath
- Upholstered berth base
- HMC coil spring mattress, spread, throw pillows, pillow shams, pillows, mattress pad and sheets
- Ventilating portlight with screen
- Cedar-lined hanging locker with arched doors and automatic light
- Nightstand with drawers
- Full-length mirror AC and DC light fixtures
- AC dimmable lights
- AC duplex outlets
- AM/FM audio access with local DVD/CD changer and a one-touch master universal remote with RF control
- Telephone outlet
- Private access to head by arched door
- 20" LCD TV with MATV outlet
- Smoke detector
- Mirrored aft bulkhead
- Boston Acoustics loudspeakers
- SMX HVAC compartment controlled
- Carbon monoxide detector
- Pullman Berth, inboard bulkhead
- Private access to head with is ventilated with fresh air system

---

## Starboard Stateroom

---

The starboard stateroom features criss/cross berths with storage underneath. The berth is fitted with a coil-spring mattress and plush linen treatments. Inboard you'll find a dresser with flat screen TV and it's own private head, which is ventilated with a fresh air system.

- Whisperwall padded bulkheads
- Carpeting
- Whisperwall headliner

- Twin criss/cross berths
- Polyfoam mattresses, spreads, throw pillows, pillows, pillow shams, mattress pads and sheets
- Upholstered berth base
- Cedar-lined hanging locker with automatic light
- Full-length mirror
- Audio system control, LCD keypad and a pair of Boston Acoustics loudspeakers
- AC and DC light fixtures
- AC dimmable lights
- AC duplex outlets
- Private access to head
- Smoke detector
- Carbon monoxide detector
- Sketch-faced door to stateroom
- DC low-level lights under berth
- Telephone outlet
- Dresser
- SMX HVAC compartment controlled
- Private access to head which is ventilated and has a fresh air system

## Crew Quarters

---

The crew area is accessed via a transom door, or through a stairwell off the aft deck. Below is a stateroom with a queen walk around berth, a second stateroom providing upper/lower berths and a private head. Currently utilized as storage room.

- Carpeting
- Padded vinyl covering on hullside
- Vinyl headliner
- Queen walk around berth
- Padded berth base
- Polyfoam mattress, spread, pillow, pillow shams, mattress pads and sheets
- Cedar-lined hanging locker with doors and automatic light
- Full-length mirror
- Telephone outlets, port and starboard
- 20" LCD TV
- AM/FM audio access with local DVD/CD changer and a one-touch master universal remote with RF control
- Boston Acoustics loudspeakers
- AC and DC light fixtures
- AC duplex outlets
- Curved stairwell from aft deck
- Watertight door from swim platform

- SMX HVAC compartment controlled
- Carbon monoxide detector
- Large stand-up refrigerator/freezer

## Flybridge

The open flybridge has a large console featuring a full array of electronics installed by HST and three Pompanette helm chairs. Aft you'll find a key bar, which houses two refrigerators with three bar stools. A Twin lounges provide ample seating and aft of the starboard lounge is a sunpad. Just aft of the port lounge and out from under the Pipewelders Hardtop is a cabinet which houses an electric grill. In addition is aft looking seating. At the helm Hatteras' computer monitoring system monitors the ship's systems to include engine measurements, alarms and diagnostic tools, pump bilges and holding tanks with the push of a button. All functions for the integrated electronics including cameras are available on a unit in the office as well as the television in the master suite and the controls are built into the owners night table. Cell phone/blue tooth integration will take over a cell phone and send it through the onboard phone system as if it were a land line. On the boat deck a 2000 lb fully hydraulic telescoping unit with a 20" boom allows easy access for any toys. In addition, this boat has customized removable chocks for the tender, allowing the entire aft portion of the boat deck to be used as a sun deck, when the toys are not on top.

- 104 square foot boat deck
- Computer controlled ethernet Marine Nav (Mil spec) monitoring system with LCD touch screen display providing visual and audible signals for engines, gears, generators, high bilge water, fire warning in engine compartment, fire extinguisher discharge in engine compartment, AC power loss, smoke detectors, all tank level indication, low battery voltage, alternator failure, battery charger failure, bilge pump control and run indication, holding tank pump control and run indication, and carbon monoxide detectors. A history log is maintained for critical alarms and trends may be set up to view various parameters with respect to time. Additional monitoring points may be added to the system economically and easily.
- Molded fiberglass bridge
- Garmin (2) touch screen GPS/plotter, Icom VHF, Simrad AP25 autopilot, Furuno RD 33 depth and temp and full electronics package to include:
  - 4-sided enclosure EZ2CY
  - Welded and polished 316L stainless-steel rails and stanchions
  - L-shaped lounge with storage, port and starboard
  - Stone table with stainless-steel pedestals
  - Three helm chairs
  - Sun lounge with storage
- Forward control station with all necessary switches, single-lever electric clutch and throttle controls, synchronizer, back-up controls, power assisted steering, compass and electronic console

- Key bar with sink, two refrigerators, and bottle and glass storage
- AM/FM stereo with radio access with local DVD/CD changer and a one-touch master universal remote with RF control
- Boston Acoustics loudspeakers
- 2000 lb fully hydraulic telescoping davit
- Remote control for docking with bow thruster controls, outlets on bow, stern and bridge

## Electronics

---

- (2) Raymarine E-120 15" monitors on F/B, 1 in office, and main helm
- XM weather system
- Raymarine radar 12kw 6 antenna
- Raymarine sounder
- (2) Garmin GPS
- Platinum software
- (3) Security cameras, aft deck, aft facing, engine room, fwd over bow
- All operational from master TV
- Night vision flir
- (2) VHF radios ICOM 602's with remote mikes in salon and office
- Simrad auto pilot F/B and main
- Furuno RD 33 sounder
- Simrad IS 15 monitor (at galley helm)
- (2) ACR spot lights
- Panasonic phone system
- Cell booster
- Sat TV
- Internet
- Blue tooth
- Trim tab indicator
- Wi-fi receiver and antenna

## Exterior Finish and Construction

---

This boat is a perfect blend of comfort and style. It is also one of the few boats today that provides a rich coat of protective polyurethane paint producing a hard outer surface that provides protection from those gel-coated porous surfaces found within other brands. It also is easier to repair and match than a gelcoat vessel.

- Isophthalic gelcoat, exterior layer, white
- Blister-resistant vinylester resin in hull bottom skin coat
- Hull and superstructure, polyurethane coating
- Polymer/copper-based anti-fouling bottom paint
- Boot stripe, polyurethane coating

- Decks, non-skid surface, polyurethane paint with polymeric beads
- Solid fiberglass hull bottom
- Hull sides and superstructure laminated with PVC foam core
- Fiberglass stringers
- Steel laminated in stringers at key locations to bolt engine mounts
- Engine room bulkheads and decks of resin-infused composite construction using PVC foam core with layers of fiberglass laminate on each side

## Hardware and Miscellaneous

---

This boat is designed with longevity in mind as all stanchions and cleats are through bolted to aluminum backing plates that are encapsulated into solid fiberglass sections of the superstructure. Molded fiberglass UL approved tanks are placed between the stringers and glassed in place. All fuel tanks are constructed with a fire-retardant resin, and exposed surfaces are coated with a fire-retardant intumescent paint. Bulkheads and stringers are fully tabbed into the hull itself and the stringer system is built of a closed cell polyurethane foam to provide for stiff longitudinal support with no fear of water intrusion.

- Finished wood bulkheads with high-gloss polyester finish in genuine cherry
- All hardware chrome on brass or welded and polished stainless-steel
- Swim platform with welded and polished stainless-steel reboarding ladder
- Welded and polished stainless-steel anchor chute and roller
- 110-pound plow anchor, anchor line and deck hawse pipe
- Windlass, 4000-pound hydraulic with 300 feet of stainless steel chain with deck-mounted control switches
- Integrated hydraulic digital 35 hp thruster/stabilizer system with 7.5 square foot fins
- Stern thruster
- Six polished stainless-steel springline cleats with chafing strips, through-bolted in aluminum backing plates
- Custom aft flybridge deck table (over life rafts)
- Bow and stern polished stainless-steel cleats, through-bolted in aluminum backing plates
- Polished 1 1/4 stainless-steel rails on bow, side-deck and flybridge, drilled and tapped in aluminum backing plates
- Boarding gates, port and starboard side decks
- Remote controlled searchlights (2)
- Fog bell
- Dual air horns
- Zincs on rudders and shafts
- Bow and stern staffs with pennant and ensign
- Blue braided mooring lines (6)
- Alloy 22 high-strength propeller shafts, 4"
- Manganese bronze dripless shaft and rudder seals
- Life jackets (12)

- Life ring
- Portable "drychem" and fire extinguishers (13), U. L. approved type in compliance with United States Coast Guard and ABYC standards
- Stainless-steel trim tabs
- Manganese bronze struts and Alloy 22 high-strength shaft with zincs
- Stainless-steel rudders
- 6 blade propellers, high performance
- MarQuipt Tide Ride custom eight-step/four step sea stairs with storage brackets
- Prop removal/installation tool
- Central vacuum with five outlets
- 2000-pound, fully hydraulic, 126" boom
- Holding tank with sewage pump and overboard discharge
- Freshwater washdown, bow, with Hatteras patented quick disconnect
- Black fenders (4) with blue covers
- Pop-up cleats on swim platform (2)
- Fender tracks
- Deck plates for fuel and water fills and waste pump-out
- Heavy-duty bronze engine couplings
- Engine and generator exhaust exits through hull side near transom
- Generator exhaust, water separator
- Rope locker storage hatch, bow deck
- 1400 gpd Sea Recovery watermaker
- Deep storage port and starboard, bow trunk
- Pacific Coast door to crew's quarters from sport deck
- Wireless remote control for cablemaster

## Engine Compartment and Bilge

---

The engine room provides for easy access to equipment and the bilges are painted with a high gloss urethane paint for ease of cleaning. A forced air induction system draws cooling air for the engine room from underneath the flygridge, reducing saltwater intrusion into the engine room.

- Water manifold blocks with centralized shut-of valve for sinks and showers
- Pultruded fiberglass rudder shelf with stainless-steel rudder tie bar
- AC fluorescent lights
- DC lights
- DC exhaust blower
- Twin diesel, freshwater-cooled main engines with electrically controlled marine gears, neutral interlocks, exhaust silencers, engine hour meters, alternators, fuel filters and seawater strainers
- FM200 fixed fire extinguishing system for engine/generator compartment with automatic and remote manual controls plus audible and visual discharge signals
- Two AC ventilation fans w/reset switches



- Two 27.5 kW freshwater-cooled Electronic Quiet Diesel Onan generators with shock mounts, sound enclosure, remote start, seawater strainer, fuel/water separator, hour meter, "flow" meters and water lift muffler
- Variable speed air induction fans with duct to flybridge for engine combustion air, two 21" vaneaxial fan pressure and temperature controlled
- Polyethylene water lines
- Electric fuel transfer system with filtration and dry tank protection for pump (2)
- Freshwater fill hose for engines and generator
- AC compressed air system air line and regulator
- Dockside water inlets with pressure regulating valve, automatic dockside tank fill and Hatteras patented quick disconnect
- 24-volt DC bilge and sump pumps, six at 3700 gph, one at 2200 gph with heavy duty float switches and protective guards
- Bronze/chrome ball valves through-bolted in solid fiberglass on all underwater through-hull fittings with electrical bonding throughout
- 230-volt AC freshwater pump, with pressure tanks located in strategic areas and central charcoal filter with backflush capabilities
- U.L. Marine-listed fiberglass fuel tanks constructed with fire-retardant resin and bronze fittings, and coated with fire-retardant paint
- Fiberglass water tanks, constructed with bronze fittings and materials which comply with the requirements of Title 21 for food and drugs.
- Sewage holding tank with 230-volt AC sewage pump, plumbed for dockside pump-out with 3/4 full display and alarm as part of systems monitor
- 110-volt AC oil changing system for engines, generators and gears with Hatteras patented quick disconnect
- U.L. Marine-listed fuel filter/water separator, generators
- Sealed shower sump, two each
- U.L. Marine-listed duplex fuel filters/water separators with bypass manifold, engines
- Electric fuel priming pumps, 24-volt DC, engines
- Welded and polished 316L stainless-steel overhead grab rails
- AC distribution panels
- DC distribution panels
- Painted polyurethane engine room and bilges
- United States Coast Guard type A1 U.L. Marine-listed fuel lines
- Discharge sea chests, stainless-steel steering tie bar with pivoting self-aligning ball joint connection at all cylinder and tie bar connections
- Insulation in deck
- Gray water tanks, (2) plumbed, 126-gallons each, with 230-volt AC sewage pump, plumbed for dockside pump-out with 3/4 full display and alarm as part of systems monitor
- Air conditioning compressors, chilled water, (2) four-ton
- Pick-up sea chests

## Electrical Equipment

Hatteras is known for their attention to detail, and wiring is one of their strongest points. All wiring is tin-coated and sealed in an insulation jacket. Wiring harnesses are tie-wrapped every 6 inches and secured every 18 inches with easy access. Wiring is color-coded and numbered at both terminal ends, and is well documented in the owner's manual. Go one step further to find their attention to detail in placement of dual light switches on both ends of the salon and companionway for convenience. In addition, this boat has a chilled water air conditioning system that saves on electric.

- Water heaters, one 30-gallon (new 2/15) and one 20-gallon midship, and one 6-gallon aft for crew
- Two 24-volt banks of heavy-duty, 12-volt marine batteries (4) mounted in fire-retardant fiberglass boxes
- U.L. 1426 listed boat cable, tin-coated with insulation
- Gel/lead acid compatible 240-volt automatic programmable battery charger, 50/60Hz
- Automatic battery paralleling system with switch at control console
- Two 100-amp transformer connected retractable shore cords covered by hatch, forward, with wireless remote control for cablemaster
- AC and DC light fixtures
- Battery control panels with fuses and isolation switches
- DC electronics panels with magnetic circuit breakers
- AC distribution panels with magnetic circuit breakers
- AC switching panel with source selector switches, digital volt meter, ammeter, frequency meter, generator start/stop controls, voltage boost tap switch and interlock selector breakers
- Computer controlled ethernet monitoring system with LCD touch screen display providing visual and audible signals for engines, gears, generators, high bilge water, fire warning in engine compartment, fire extinguisher discharge in engine compartment, AC power loss, smoke detectors, all tank level indication, low battery voltage, alternator failure, battery charger failure, bilge pump control and run indication, holding tank pump control and run indication, and carbon monoxide detectors. A history log is maintained for critical alarms and trends may be set up to view various parameters with respect to time. Additional monitoring points may be added to the system economically and easily.
- Navigation lights, U.L. certified to United States Coast Guard and ABYC specifications
- Ground fault protection on AC receptacles and lighting circuits
- Chilled water air conditioning with reverse-cycle heating, with soft starting AC compressors, automatically staged and individually controlled with SMX controls in each compartment
- SSB radio ground screen laminated in cabin top
- Telephone/CATV inlet, one each, forward
- Telephone and CATV shoreline cord, one each
- TV antenna, omni-directional

---

## Aft Deck/Sport Deck

---

Molded in steps lead up from the sport deck and down from the flybridge. The aft deck provides

for built in seating with sunbrella cushions and a teak table for dining. Additional seating is provided around the teak table with folding chairs. For safety, stainless steel gates provide protection to the lower twin stairwells. To starboard you'll find a door from the aft deck provides easy access to the crew staterooms and a second access is found through the transom. The sport deck provides access to a hot/cold shower as well as quick disconnects for salt and freshwater washdown. This boat provides for dual 100 amp and 50 amp shorepower connections on the stern as well as the bow deck.

- SPORT DECK:
  - Molded fiberglass with non-skid sole
  - Freshwater wash down outlet with hose connection and Hatteras patented quick disconnect
  - Welded and polished 316L removable stainless-steel hoop rails
  - Hand-held hot/cold cockpit shower with cover
  - Molded-in fiberglass steps with DC lights to aft deck
  - Pop-up cleats (2)
  - Reboarding ladder, centerline
  - Weather-tight Pacific Coast door to crew's quarters and engine room
- AFT DECK:
  - AC duplex outlet
  - AC lighting in hardtop
  - Dual molded fiberglass steps, port and starboard, to swim platform with lights
  - Molded fiberglass steps to flybridge
  - Welded and polished 316L stainless-steel gates
  - Molded fiberglass with non-skid sole, decks and steps to flybridge and swim platform
  - Curved polished stainless-steel sliding door to salon
  - Audio system control, LCD keypad and a pair of Pioneer Marine waterproof loudspeakers
  - Hardtop
  - Molded lounge with vinyl-covered Polyfoam cushions and storage underneath, with cover
  - Door with stairwell to crew's quarters/engine room
  - Aft deck teak table with cover
  - Steps to side decks, port and starboard
  - Folding chairs

## Custom Additions

---

Grateful Two has many unique systems that make this boat easy to manage. For example:

- The owner installed a back up hydraulic cooling system, for the bow thruster, windlass and stabilizers.
- Fuel polishing system, providing a pre-filter for all fuel before it gets to the standard pre-filters.
- Fully automatic water maker with a remote control in the pilot house.

- Winter heating system, when the sea water temperature is below 50 degrees F, an inline electric heat system works on land or in water.
- Chain counter
- Stainless steel anchor chain (tangle free)
- Backup fuel transfer system
- Ultrasonic sending units which read all liquid tanks to include, fuel, water and waste.
- Underwater lights
- Air compressor outlets for fenders and toys
- Dockside power; port & starboard, bow & stern
- Engine room access master stateroom & engine room
- Underwater lights
- Aft Quartz lights on hardtop
- Head hunter waste management system
- Stabilizers integrated ABT
- ABT bow thruster
- ABT stern thruster
- Satellite internet/data receiver and antenna
- A/C compressors upgrades from 4 ton to 5 ton
- Backup A/C saltwater circulation pump. Plumbed w/remote switch
- Backup Mach 5 freshwater pump. Plumbed w/remote switch
- Piratecom communication headsets (4)
- Spot Zero water filtration system w/spare filters
- Hubbell "Hot Box" dock side "y"
- Genset raw water intake "flow" meters
- Crews Quarters freezer/refrig unit
- Exhaust fan reset switches
- Trim tab indicator at helm
- F/B refrigerator
- Crews quarters fishing rod bracket w/holders
- Cockpit aft curtain
- Cockpit carpets
- Cockpit boarding assist
- Cockpit rod holders
- Galley storage stools (5)
- Tinted salon/galley windows
- Additional F/B aft facing seating
- Salon dining table w/chairs and leaf
- Engine room clothes line
- Salon ozone filter

## Upgrade/Service

---

- Complete port side Cat main engine rebuild (Nov. 2103)

- Complete genset insulation upgrade (Jan 2014)
- Bottom paint/cutlass bearing/zinc's/prop speed (Feb 2015)
- Stabilizer 1,000 hour service w/complete hydraulic system service (Feb 2015)
- PTO/Transmission screen service (Aug 2014)
- Marquipt davit service (Sept 2013)
- Main engine and genset service (June 2015) Complete all zincs, filters and impellers
- Salon Samsung TV monitor (Jan 2014)
- Upgraded Marquipt boarding ladder
- F/B aft Eisenglass enclosure
- Liferaft cover/table upgrade

## Spares

---

- Raymarine system monitor
- Head hunter Mako 1 diaphragm pump, ozone/air pump, chlorine pump
- Dinghy chocks
- Complete 10,000 lb tow system for tender
- Galley helm seat
- Ice maker (F/B)
- Main, genset and transmission fuel/oil filters
- Spot zero filters/sterilizer bulbs
- Shaft zinc's
- Jabsco genset raw water circulation pump
- Overhead light fixtures
- Electrical switches
- F/B Eisenglass enclosures
- Cockpit rugs
- Crew's quarters microwave oven
- Two 25" shore power cables

## Исключения

---

При продаже яхты исключаются личные вещи владельца.

## Отказ от ответственности

---

Компания предоставляет описание судна или яхты добросовестно, но не может гарантировать точность этой информации, а также не ручается за техническое состояние. Покупатель должен проинструктировать своих агентов или оценщиков исследовать представленную информацию более подробно, по собственному желанию. Продажа судна или яхты, изменение цены или снятие с продажи будет происходить без

предварительного уведомления.

# ФОТОГРАФИИ

Salon



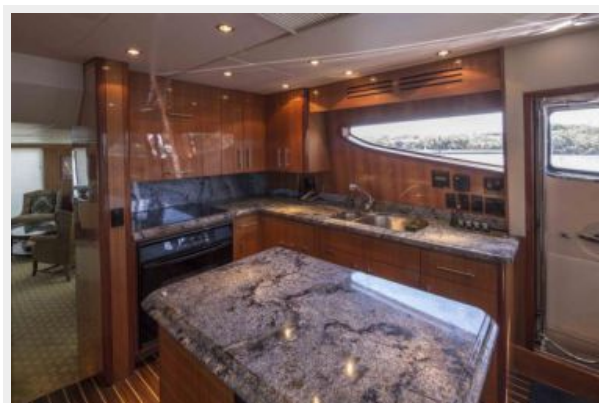
Salon



Salon



Galley



Master Stateroom



Office





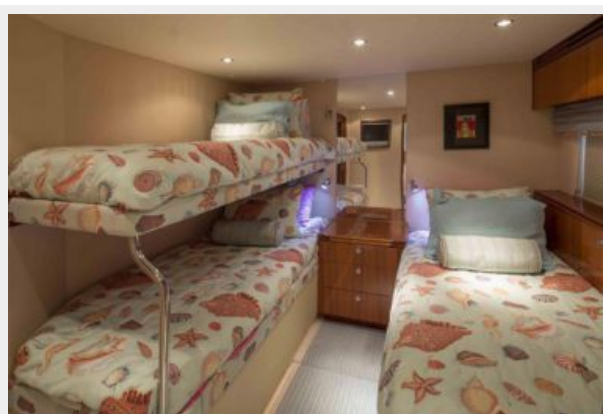
**Master Bath**



**VIP Stateroom**



**Port Stateroom**



**Starboard Stateroom**



**Pilothouse**

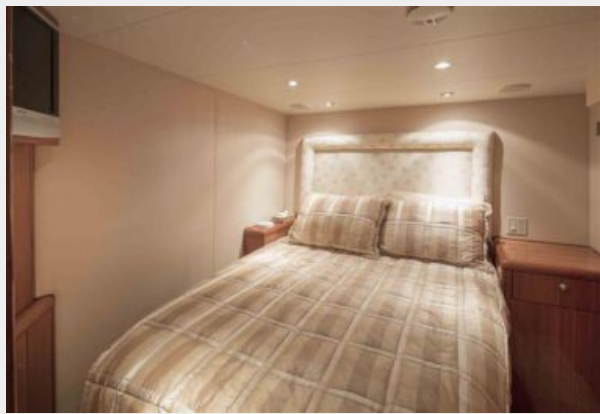


**Pilothouse**





**Captain's Quarters**



**Engine Room**



**Flybridge**



**Flybridge**



**Flybridge Helm**



**Aft Deck**





# КОНТАКТЫ

---

Андрей Шестаков (Andrey Shestakov) – ведущий яхтенный брокер отдела продаж яхт и судов компании Shestakov Yacht Sales Inc. Официальный представитель Shestakov Yacht Sales Inc. для русскоговорящих клиентов в центральном офисе компании в Майами/Форт Лодердейл/Флорида/США.

## Контактная информация

---

Email: [andrey@shestakovyachtsales.com](mailto:andrey@shestakovyachtsales.com)

Web: [shestakovyachtsales.com](http://shestakovyachtsales.com)

## Телефоны

---

Краснодарский край: **+7(918)465-66-44**

США, Майами, Флорида: **+1(954)274-4435**

## Время работы

---

Понедельник – Суббота: **9:00 - 21:00**  
EDT

Воскресенье: **Закрето**

## Адрес

---



Harbour Towne Marina, 850 NE 3rd St,  
STE 213, Dania, FL 33004